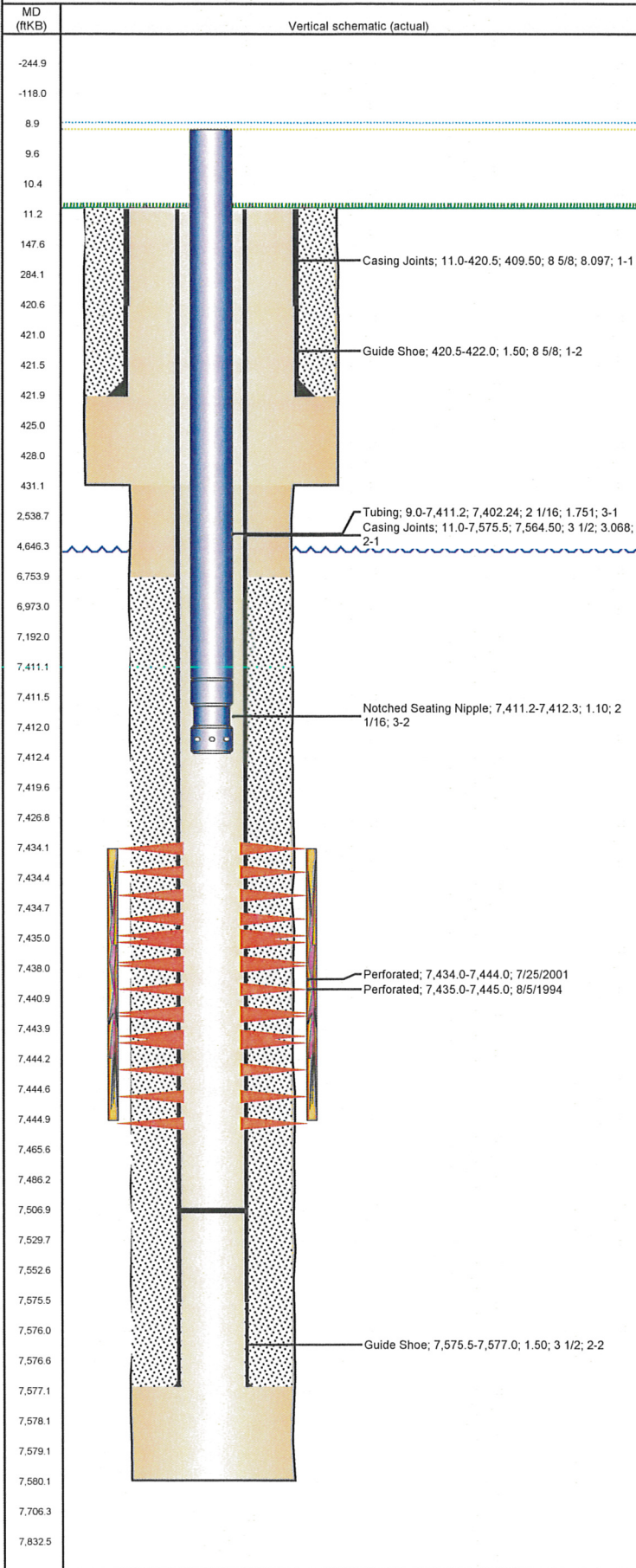


# Frac Wellbore Schematic Report

Well Name: DL PHILLIPS 24-22

VERTICAL - ORIGINAL HOLE, 6/21/2012 2:42:45 PM



## Well Header

API 05-123-18369	Business Unit WATTENBERG	District 15	Well Config VERTICAL
Original KB Elevation (ft) 4,955.00	KB - GL / MSL (ftKB) 11.00	Spud Date 7/14/1994	P & A Date

Comment

Directions To Well

95TH AVE & CR 54 WEST 1 1/10 NORTH 1 INTO

Current PBTD (ftKB)

ORIGINAL HOLE - 7,507.0

## Surface Location (Congressional)

Quarter 1	Quarter 2	Quarter 3	Quarter 4	Section	Township	Twnshp N...	Range	Rng E/W Dir
		NW	NW	24	5	N	67	W

## Bottom Hole Location

North-South Distance (ft)	From N or S Line	East-West Distance (ft)	From E or W Line

## Plug Back Total Depths

Date	Depth (ftKB)	Method	Com
7/25/1994	7,417.0	CASED HOLE LOG	DEPTH LOGGER ON CBL
12/8/1995	7,526.0	TAG	CLEAN OUT

## Wellbore Sections

Section Des	Size (in)	Act Top (ftKB)	Act Btm (ftKB)
SURFACE	12 1/4	11.0	431.0
PRODUCTION	7 7/8	431.0	7,580.0

## Zone Statuses

Zone Name	Status Date	Status	Job
CODELL	8/23/1994	PR	DRILLING/COMPLETION - ORIGINAL, 7/14/1994 00:00
CODELL	8/9/2001	PR	RE-FRAC, 7/24/2001 00:00
CODELL	12/15/2011	PR	TRI-FRAC, 10/1/2011 05:00

## Casing Strings

Csg Des	Run Date	OD (in)	Wt/Len (lb/ft)	Grade	Top (ftKB)	Set Depth (ftKB)
Surface Casing	7/14/1994	8 5/8	24.00	?	11.0	422.0
Production	7/19/1994	3 1/2	9.30	N-80	11.0	7,577.0

## Cement

Des	Top (ftKB)	Btm (ftKB)
SURFACE CASING CEMENT	11.0	422.0
PRODUCTION CASING CEMENT	6,754.0	7,577.0

## Tubing Components

Item Des	OD (in)	Wt (lb/ft)	Grade	Jts	Len (ft)
Tubing	2 1/16	3.25	J-55	228	7,402.24
Notched Seating Nipple	2 1/16		J-55	1	1.10

## Perforation Data

Zone	Bnch/St g	Entered Shot Total	Top (ftKB)	Btm (ftKB)	Date
CODELL, ORIGINAL HOLE		40	7,434.0	7,444.0	7/25/2001
CODELL, ORIGINAL HOLE		40	7,435.0	7,445.0	8/5/1994

## Stimulations & Treatments

Bnch/Stg	Date	Zone	Primary Job Type
	8/16/1994	CODELL, ORIGINAL HOLE	DRILLING/COMPLETION - ORIGINAL

Comment

Total Add Amount Proppant 100 MESH 22000 lb; Proppant AcFrac Black 513000 lb	Total Clean Volume...	Vol Slurry Tot (gal) 167034.00	Vol Gas Tot (MCF)
Avg Treat Pressure (psi) 4,220.0	Max Treat Pressure (psi)	Avg Treat Rate (bbl/min)	Max Treat Rate (bbl/min)

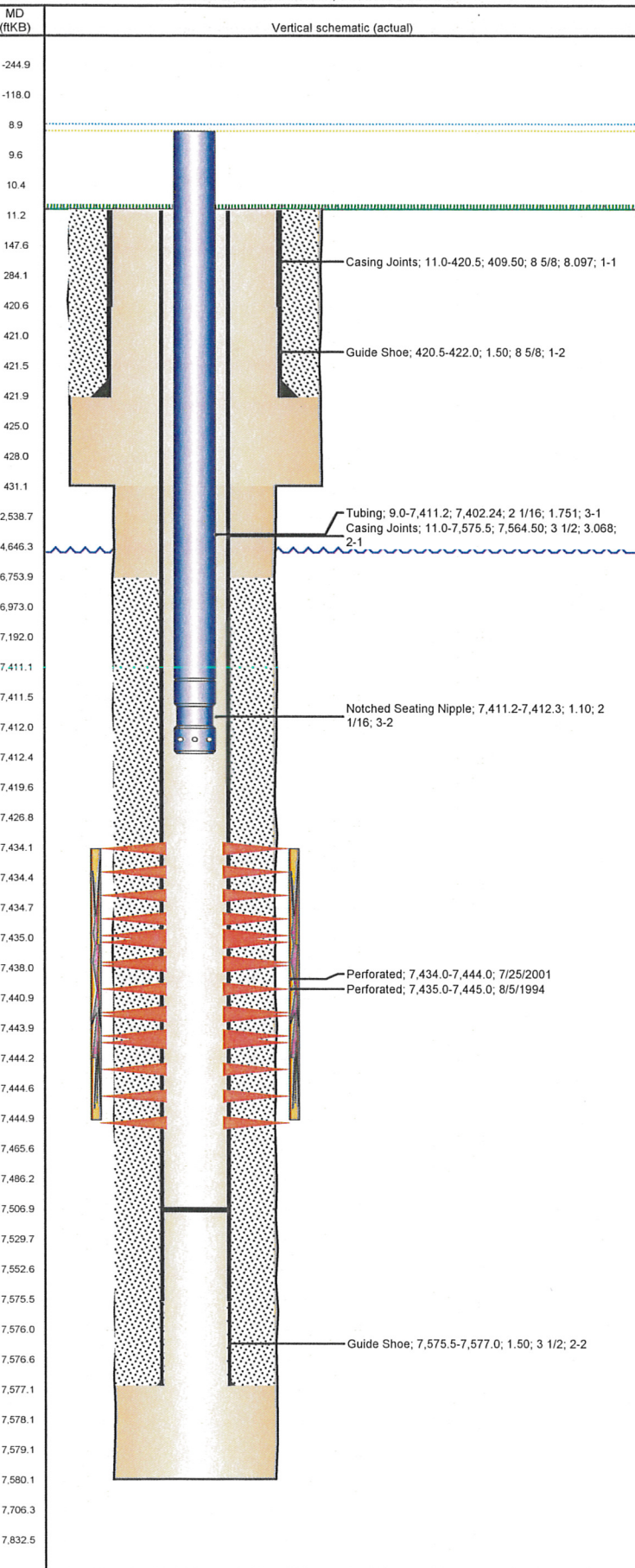
Bnch/Stg	Date	Zone	Primary Job Type
	8/1/2001	CODELL, ORIGINAL HOLE	RE-FRAC

Comment

Total Add Amount Proppant 262900 lb	Total Clean Volume...	Vol Slurry Tot (gal) 118062.00	Vol Gas Tot (MCF)
Avg Treat Pressure (psi) 3,224.0	Max Treat Pressure (psi)	Avg Treat Rate (bbl/min) 14.00	Max Treat Rate (bbl/min)

**Well Name: DL PHILLIPS 24-22**

VERTICAL - ORIGINAL HOLE, 6/21/2012 2:42:46 PM



## Stimulations & Treatments

Bnch/Stg	Date	Zone	Primary Job Type	
	11/3/2011	CODELL, ORIGINAL HOLE	TRI-FRAC	
Comment				
(CODELL TRI) JOB WAS SUCCESSFUL WITHOUT INCIDENT. PH 7.57, TEMP 83.7, FINAL 5 MIN SI 2601 PSI.				
Total Add Amount		Total Clean Volume...	Vol Slurry Tot (gal)	Vol Gas Tot (MCF)
Proppant Ottawa 224253.6 lb		131157.60	141363.60	
Avg Treat Pressure (psi)	Max Treat Pressure (psi)	Avg Treat Rate (bbl/min)	Max Treat Rate (bbl/min)	
7,926.0		17.82	18.48	

## Other In Hole

Run Date	Des	OD (in)	Top (ftKB)	Btm (ftKB)

## Logs

Date	Type	Top (ftKB)	Btm (ftKB)
7/19/1994	COMPENSATED DENSITY	4,200.0	7,552.0
7/19/1994	INDUCTION	425.0	7,576.0
7/25/1994	SONIC	6,640.0	7,413.0