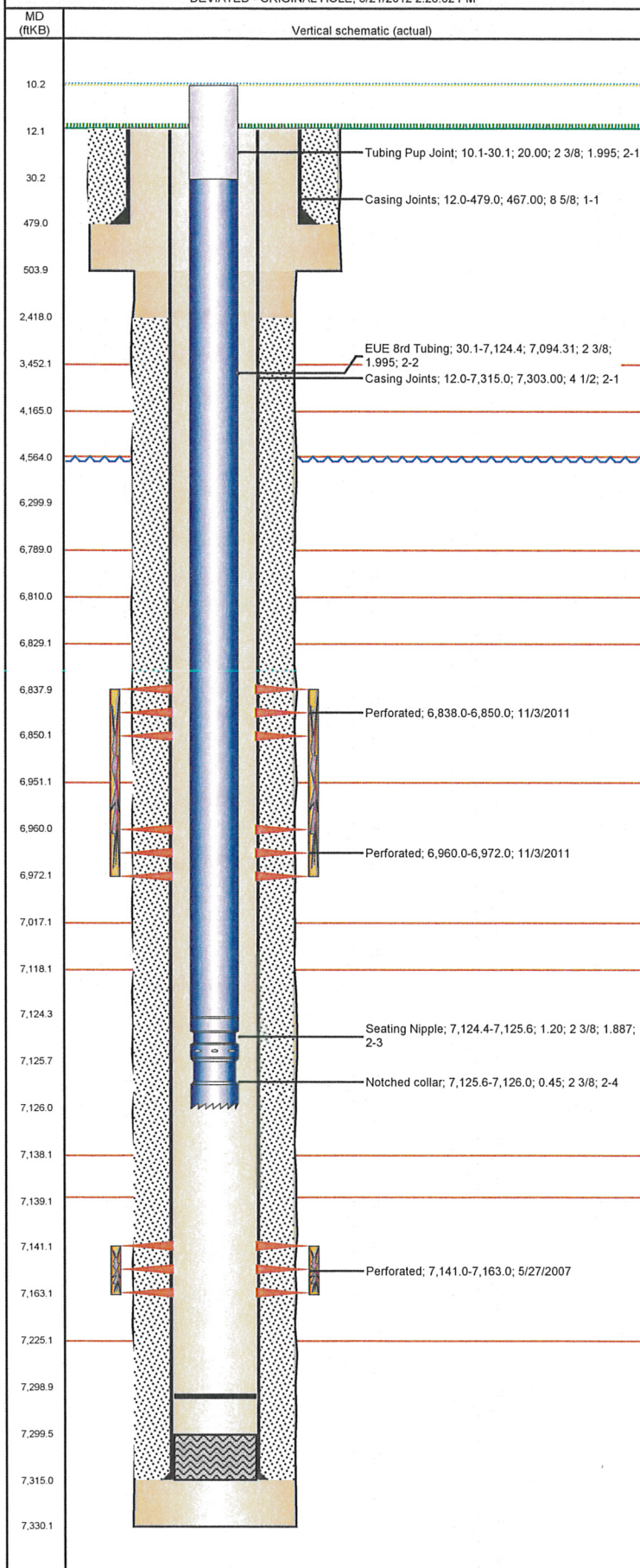


Well Name: KODAK 34-44

DEVIATED - ORIGINAL HOLE, 6/21/2012 2:26:32 PM



Well Header

API 05-123-24906	Business Unit WATTENBERG	District 15	Well Config DEVIATED
Original KB Elevation (ft) 4,753.00	KB - GL / MSL (ftKB) 12.00	Spud Date 3/27/2007	P & A Date

Comment

Directions To Well

HWY 257 & POUDRE RIVER TRAIL ROAD EAST 9/10 SOUTH 3/10 EAST INTO

Current PBTD (ftKB)

ORIGINAL HOLE - 7,299.0

Surface Location (Congressional)

Quarter 1	Quarter 2	Quarter 3	Quarter 4	Section	Township	Twnshp N...	Range	Rng E/W Dir
		NE	SE	34	6	N	67	W

Bottom Hole Location

North-South Distance (ft)	From N or S Line	East-West Distance (ft)	From E or W Line

Plug Back Total Depths

Date	Depth (ftKB)	Method	Com
5/18/2005	7,270.0	CASED HOLE LOG	DEPTH LOGGER
3/31/2007	7,299.6	CASING TALLY	PBTD

Wellbore Sections

Section Des	Size (in)	Act Top (ftKB)	Act Btm (ftKB)
SURFACE	12 1/4	12.0	504.0
PRODUCTION	7 7/8	504.0	7,330.0

Zone Statuses

Zone Name	Status Date	Status	Job
CODELL	11/29/2007	PR	DRILLING/COMPLETION - ORIGINAL, 3/27/2007 00:00
NIOBRARA	1/16/2012	PR	RECOMPLETION, 10/14/2011 09:00

Casing Strings

Csg Des	Run Date	OD (in)	W/Len (lb/ft)	Grade	Top (ftKB)	Set Depth (ftKB)
Surface	3/27/2007	8 5/8	24.00		12.0	479.0
Production	3/31/2007	4 1/2	11.60	M-80	12.0	7,315.0

Cement

Des	Top (ftKB)	Btm (ftKB)
Surface Casing Cement	12.0	479.0
Production Casing Cement	2,418.0	7,315.0
Production Casing Cement	6,300.0	7,315.0

Tubing Components

Item Des	OD (in)	Wt (lb/ft)	Grade	Jts	Len (ft)
Tubing Pup Joint	2 3/8	4.70	J-55	2	20.00
EUE 8rd Tubing	2 3/8	4.70	J-55	230	7,094.31
Seating Nipple	2 3/8	5.40	J-55	1	1.20
Notched collar	2 3/8		J-55	1	0.45

Perforation Data

Zone	Bnch/St g	Entered Shot Total	Top (ftKB)	Btm (ftKB)	Date
NIOBRARA, ORIGINAL HOLE	B	12	6,838.0	6,850.0	11/3/2011
NIOBRARA, ORIGINAL HOLE	C	12	6,960.0	6,972.0	11/3/2011
CODELL, ORIGINAL HOLE		88	7,141.0	7,163.0	5/27/2007

Stimulations & Treatments

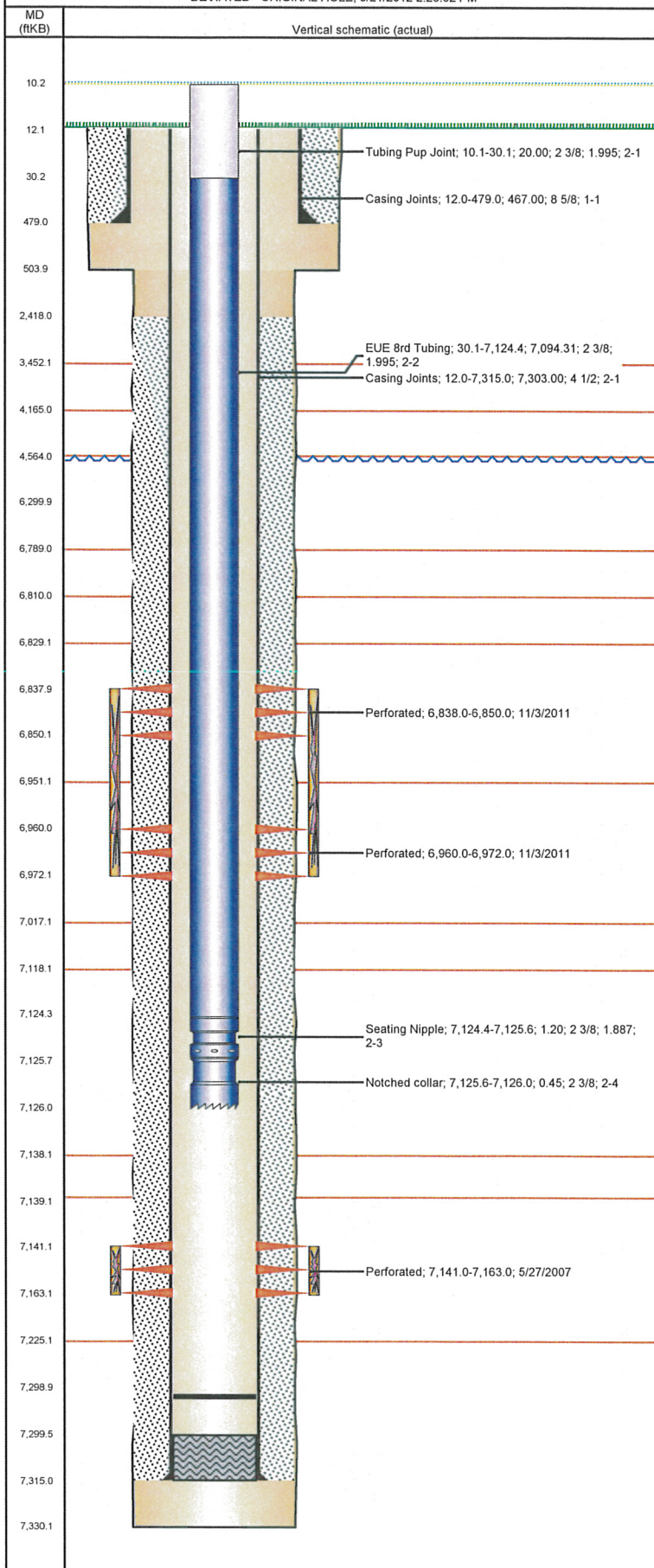
Bnch/Stg Date	Zone	Primary Job Type
5/23/2007	CODELL, ORIGINAL HOLE	DRILLING/COMPLETION - ORIGINAL

Comment

Total Add Amount	Total Clean Volume...	Vol Slurry Tot (gal)	Vol Gas Tot (MCF)
Proppant 246412 lb; Proppant SB Excel 5000 lb		80413.21	
Avg Treat Pressure (psi)	Max Treat Pressure (psi)	Avg Treat Rate (bbl/min)	Max Treat Rate (bbl/min)
3,330.0	3,592.0	25.80	

Well Name: KODAK 34-44

DEVIATED - ORIGINAL HOLE, 6/21/2012 2:26:32 PM



Stimulations & Treatments

Bnch/Stg	Date	Zone	Primary Job Type	
	11/3/2011	CODELL, ORIGINAL HOLE	RECOMPLETION	
Comment				
(CODELL): HAD TO SHUT DOWN 77 BBL IN PAD RAN OUT OF FUEL ON THE CHEMICAL TRUCK WENT TO 22 BPM ON THE RATE.5 MIN SHUT IN PSI 3399. JOB WENT GOOD AFTER WE GOT STARTED.				
Total Add Amount		Total Clean Volume...	Vol Slurry Tot (gal)	Vol Gas Tot (MCF)
Proppant Ottawa 230445.4 lb		131112.24	141665.16	
Avg Treat Pressure (psi)	Max Treat Pressure (psi)	Avg Treat Rate (bbl/min)	Max Treat Rate (bbl/min)	
3,542.0	3,991.0	21.60	30.30	
Bnch/Stg	Date	Zone	Primary Job Type	
	11/3/2011	NIOBRARA, ORIGINAL HOLE	RECOMPLETION	
Comment				
(NIOBRARA): 5 MIN SHUT IN PSI 3199.ABOUT 10,000 SHORT ON SAND STUCK IN SAND BIN.				
Total Add Amount		Total Clean Volume...	Vol Slurry Tot (gal)	Vol Gas Tot (MCF)
Proppant Ottawa 235504.201 lb		155036.70	165742.08	
Avg Treat Pressure (psi)	Max Treat Pressure (psi)	Avg Treat Rate (bbl/min)	Max Treat Rate (bbl/min)	
4,069.0	4,539.0	50.50	40.40	

Other In Hole

Run Date	Des	OD (in)	Top (ftKB)	Btm (ftKB)

Logs

Date	Type	Top (ftKB)	Btm (ftKB)
4/1/2007	COMPENSATED DENSITY	3,400.0	7,301.0
4/1/2007	DIFL/DENS/GR/GRD/CAL	491.0	7,321.0
5/21/2007	CBL/CCL/GR	2,300.0	7,268.0