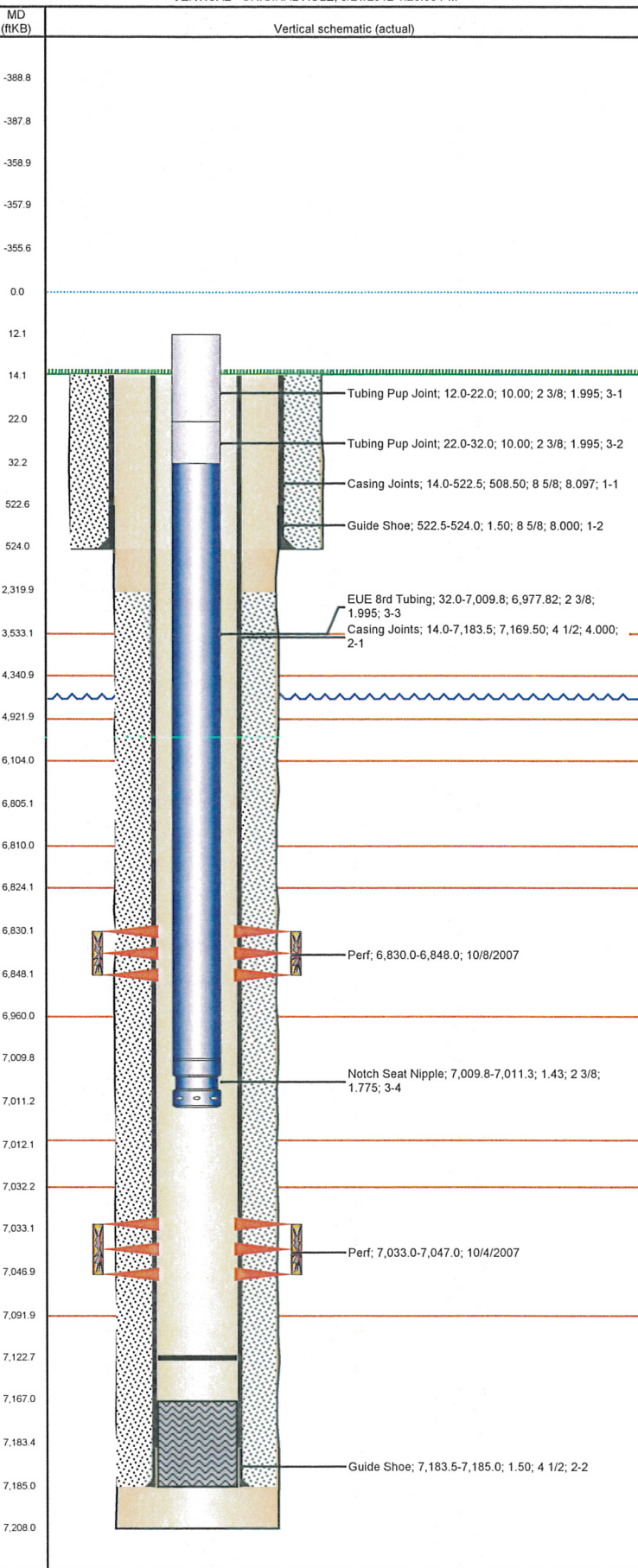


Well Name: GIBBS F28-18

VERTICAL - ORIGINAL HOLE, 6/21/2012 1:25:03 PM



Well Header

API 05-123-24762	Business Unit WATTENBERG	District 15	Well Config VERTICAL
Original KB Elevation (ft) 4,661.00	KB - GL / MSL (ftKB) 14.00	Spud Date 9/15/2007	P & A Date
Comment			

Directions To Well

WCR 43 & 54, WEST .3, SOUTH .2, WEST INTO. NOTE : USE EAST ROAD.

Current PBTD (ftKB)

ORIGINAL HOLE - 7,122.8

Surface Location (Congressional)

Quarter 1	Quarter 2	Quarter 3	Quarter 4	Section	Township	Twnshp N...	Range	Rng E/W Dir
		NE	NW	28	5	N	65	W

Bottom Hole Location

North-South Distance (ft)	From N or S Line	East-West Distance (ft)	From E or W Line

Plug Back Total Depths

Date	Depth (ftKB)	Method	Com
9/18/2007	7,167.0	TAG	FLOAT COLLAR
10/3/2007	7,146.0	CASED HOLE LOG	DEPTH LOGGER ON CBL

Wellbore Sections

Section Des	Size (in)	Act Top (ftKB)	Act Btm (ftKB)
SURFACE	12 1/4	14.0	524.0
PRODUCTION	7 7/8	524.0	7,208.0

Zone Statuses

Zone Name	Status Date	Status	Job
CODELL	10/19/2007	PR	DRILLING/COMPLETION - ORIGINAL, 9/16/2007 00:00
CODELL	1/18/2012	PR	RE-FRAC, 11/1/2011 14:00
NIOBRARA	10/19/2007	PR	DRILLING/COMPLETION - ORIGINAL, 9/16/2007 00:00

Casing Strings

Csg Des	Run Date	OD (in)	Wt/Len (lb/ft)	Grade	Top (ftKB)	Set Depth (ftKB)
Surface	9/16/2007	8 5/8	24.00	J-55	14.0	524.0
Production	9/18/2007	4 1/2	11.60	M-80	14.0	7,185.0

Cement

Des	Top (ftKB)	Btm (ftKB)
SURFACE CASING CEMENT	14.0	524.0
PRODUCTION CASING CEMENT	2,320.0	7,185.0

Tubing Components

Item Des	OD (in)	Wt (lb/ft)	Grade	Jts	Len (ft)
Tubing Pup Joint	2 3/8	4.70	J-55	1	10.00
Tubing Pup Joint	2 3/8	4.70	J-55	1	10.00
EUE 8rd Tubing	2 3/8	4.70	J-55	226	6,977.82
Notch Seat Nipple	2 3/8	4.70	N-80	1	1.43

Perforation Data

Zone	Bnch/St g	Entered Shot Total	Top (ftKB)	Btm (ftKB)	Date
NIOBRARA, ORIGINAL HOLE	A	72	6,830.0	6,848.0	10/8/2007
CODELL, ORIGINAL HOLE		56	7,033.0	7,047.0	10/4/2007

Stimulations & Treatments

Bnch/Stg	Date	Zone	Primary Job Type
	10/8/2007	CODELL, ORIGINAL HOLE	DRILLING/COMPLETION - ORIGINAL
Comment			

Total Add Amount Proppant Ottawa 270480 lb	Total Clean Volume...	Vol Slurry Tot (gal) 129360.00	Vol Gas Tot (MCF)
Avg Treat Pressure (psi) 4,309.0	Max Treat Pressure (psi) 4,959.0	Avg Treat Rate (bbl/min) 18.40	Max Treat Rate (bbl/min) 18.80

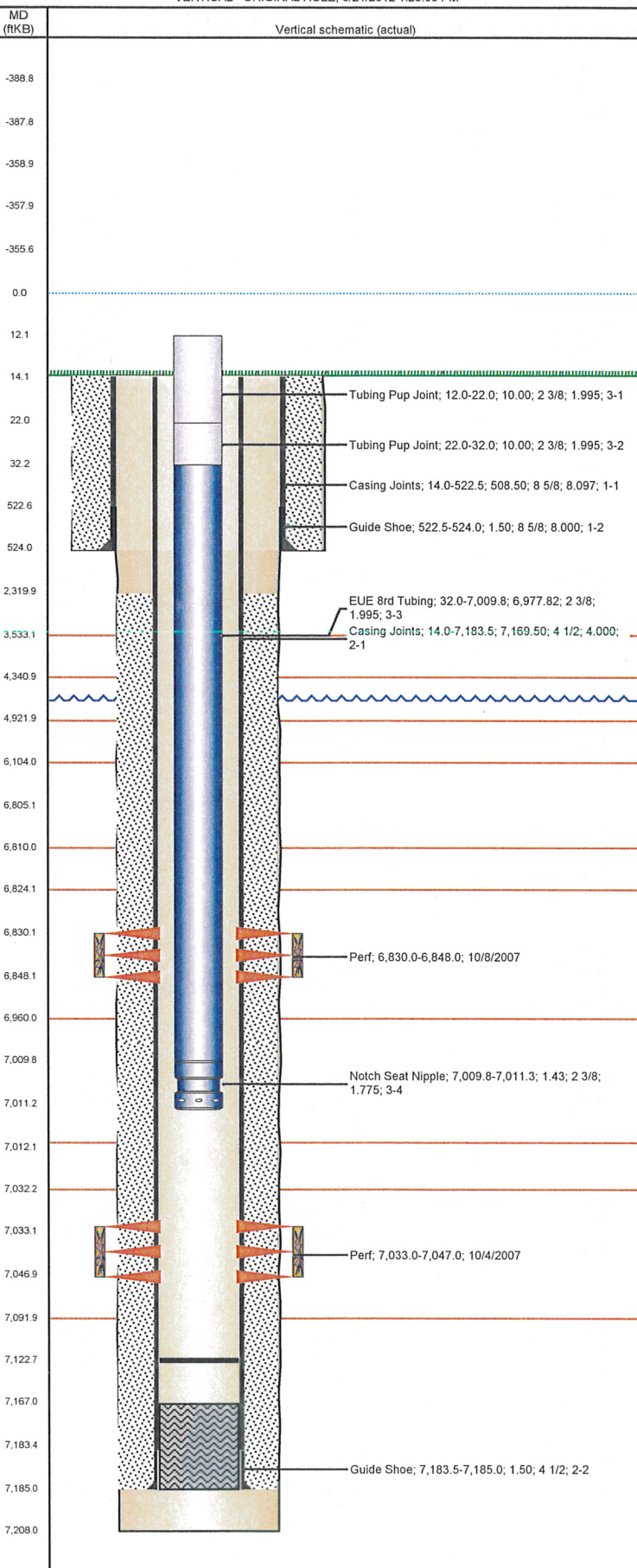
Bnch/Stg	Date	Zone	Primary Job Type
	10/8/2007	NIOBRARA, ORIGINAL HOLE	DRILLING/COMPLETION - ORIGINAL
Comment			

Total Add Amount Proppant 250000 lb	Total Clean Volume...	Vol Slurry Tot (gal) 169470.01	Vol Gas Tot (MCF)
Avg Treat Pressure (psi) 4,882.0	Max Treat Pressure (psi) 4,997.0	Avg Treat Rate (bbl/min) 37.20	Max Treat Rate (bbl/min) 45.30

Frac Wellbore Schematic Report

Well Name: GIBBS F28-18

VERTICAL - ORIGINAL HOLE, 6/21/2012 1:25:03 PM



Stimulations & Treatments

Bnch/Stg	Date	Zone	Primary Job Type
	11/17/2011	CODELL, ORIGINAL HOLE	RE-FRAC
Comment (CODELL RF): JOB WENT WELL WITH NO ISSUES TO REPORT.			
Total Add Amount Proppant Ottawa 244146.293 lb		Total Clean Volume... 129351.18	Vol Slurry Tot (gal) 140420.71
Avg Treat Pressure (psi) 5,342.0		Max Treat Pressure (psi) 5,586.0	Avg Treat Rate (bbl/min) 14.84
			Max Treat Rate (bbl/min) 15.12

Other In Hole

Run Date	Des	OD (in)	Top (ftKB)	Btm (ftKB)

Logs

Date	Type	Top (ftKB)	Btm (ftKB)
9/19/2007	Compensated Density	2,800.0	7,188.0
9/19/2007	Induction	524.0	7,208.0
10/3/2007	CBL/CCL/GR	2,210.0	7,139.0