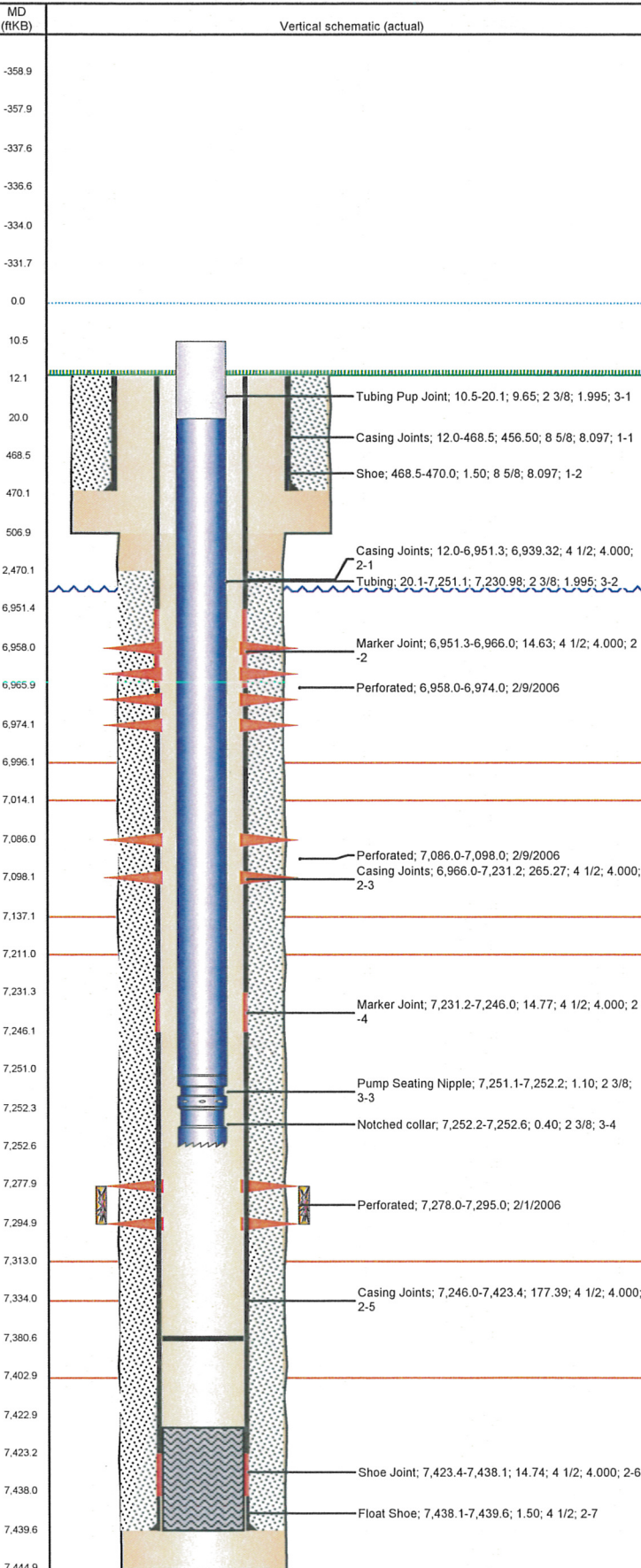


Well Name: STEPHENS J31-09

VERTICAL - ORIGINAL HOLE, 6/21/2012 11:26:58 AM



Well Header

API 05-123-23297	Business Unit WATTENBERG	District 15	Well Config VERTICAL
Original KB Elevation (ft) 4,812.00	KB - GL / MSL (ftKB) 12.00	Spud Date 1/30/2006	P & A Date

Comment
NIO PERF'D, FM WOULD NOT BREAK - FRAC TERMINATED AFTER 3 HRS & 61 ATTEMPTS.

Directions To Well
TWO RIVERS PWY & CR 378, WEST 2/10, N 6/10 TO LOC

Current PBTD (ftKB)
ORIGINAL HOLE - 7,380.6

Surface Location (Congressional)

Quarter 1	Quarter 2	Quarter 3	Quarter 4	Section	Township	Twnshp N...	Range	Rng E/W Dir
		NE	SE	31	5	N	66	W

Bottom Hole Location

North-South Distance (ft)	From N or S Line	East-West Distance (ft)	From E or W Line

Plug Back Total Depths

Date	Depth (ftKB)	Method	Com
1/15/2006	7,423.0	CASING TALLY	SHOE JOINT
2/1/2006	7,383.0	CASED HOLE LOG	DEPTH-LOGGER/CBL

Wellbore Sections

Section Des	Size (in)	Act Top (ftKB)	Act Btm (ftKB)
SURFACE	12 1/4	12.0	507.0
PRODUCTION	7 7/8	507.0	7,445.0

Zone Statuses

Zone Name	Status Date	Status	Job
CODELL	2/10/2006	PR	DRILLING/COMPLETION - ORIGINAL, 1/11/2006 00:00
CODELL	1/12/2012	PR	RE-FRAC, 1/5/2012 06:00
NIOBRARA	2/10/2006	OPEN	DRILLING/COMPLETION - ORIGINAL, 1/11/2006 00:00

Casing Strings

Csg Des	Run Date	OD (in)	Wt/Len (lb/ft)	Grade	Top (ftKB)	Set Depth (ftKB)
SURFACE	1/31/2006	8 5/8	24.00	J-55	12.0	470.0
PRODUCTION	2/4/2006	4 1/2	11.60	M-80	12.0	7,439.6

Cement

Des	Top (ftKB)	Btm (ftKB)
SURFACE CASING CEMENT	12.0	470.0
PRODUCTION CASING CEMENT	2,470.0	7,439.6

Tubing Components

Item Des	OD (in)	Wt (lb/ft)	Grade	Jts	Len (ft)
Tubing Pup Joint	2 3/8	4.70	J-55	1	9.65
Tubing	2 3/8	4.70	J-55	233	7,230.98
Pump Seating Nipple	2 3/8			1	1.10
Notched collar	2 3/8			1	0.40

Perforation Data

Zone	Bnch/St g	Entered Shot Total	Top (ftKB)	Btm (ftKB)	Date
NIOBRARA, ORIGINAL HOLE	A	96	6,958.0	6,974.0	2/9/2006
NIOBRARA, ORIGINAL HOLE	B	72	7,086.0	7,098.0	2/9/2006
CODELL, ORIGINAL HOLE		68	7,278.0	7,295.0	2/1/2006

Stimulations & Treatments

Bnch/Stg	Date	Zone	Primary Job Type
	2/9/2006	CODELL, ORIGINAL HOLE	DRILLING/COMPLETION - ORIGINAL

Total Add Amount Proppant Ottawa 270440 lb	Total Clean Volume... 127302.00	Vol Slurry Tot (gal) 127302.00	Vol Gas Tot (MCF)
Avg Treat Pressure (psi) 3,475.0	Max Treat Pressure (psi) 3,968.0	Avg Treat Rate (bbl/min) 14.10	Max Treat Rate (bbl/min) 15.20

Bnch/Stg	Date	Zone	Primary Job Type
	2/9/2006	NIOBRARA, ORIGINAL HOLE	DRILLING/COMPLETION - ORIGINAL

Comment
NIO WOULD NOT BREAK - FRAC TERMINATED AFTER 3 HRS & 61 ATTEMPTS

Total Add Amount Proppant Ottawa 270740 lb	Total Clean Volume... 0.34	Vol Slurry Tot (gal)	Vol Gas Tot (MCF)
Avg Treat Pressure (psi)	Max Treat Pressure (psi)	Avg Treat Rate (bbl/min)	Max Treat Rate (bbl/min)

Well Name: STEPHENS J31-09

VERTICAL - ORIGINAL HOLE, 6/21/2012 11:26:58 AM

Stimulations & Treatments

Bnch/Stg	Date	Zone	Primary Job Type
	1/11/2012	CODELL, ORIGINAL HOLE	RE-FRAC
<p>Comment (CODELL RF) OPEN WELL WITH 28 PSI, FORMATION BREAK 2565 PSI @ 4.3 BPM.</p> <p>PRE-TREATMENT ISIP= 2097 PSI, 5 MIN= 1334 PSI, FRAC GRAD= .72 PSI/FT, INCREASE RATE TO 18 BPM DUE TO 5 MIN BELOW 1500 PSI.</p> <p>POST-TREATMENT ISIP= 3657 PSI, 5 MIN= 3388 PSI.</p> <p>TREATMENT AVGS: VISC= 22.8 CP, PH= 10.24, TEMP= 70.18 F, RATE= 18.83 BPM, PRESS= 5439 PSI, MAX: PRESS= 6087 PSI, RATE= 18.99 BPM.</p> <p>NOLTE= + 24</p> <p>JOB WENT WELL WITH NO ISSUES TO REPORT.</p>			
Total Add Amount		Total Clean Volume...	Vol Slurry Tot (gal)
Ottawa 240498.193 lb		126788.76	137654.59
Avg Treat Pressure (psi)	5,439.0	Max Treat Pressure (psi)	6,087.0
		Avg Treat Rate (bbl/min)	18.83
		Max Treat Rate (bbl/min)	18.99
Other In Hole			
Run Date	Des	OD (in)	Top (ftKB)
Logs			
Date	Type	Top (ftKB)	Btm (ftKB)
1/15/2006	COMPENSATED DENSITY	2,850.0	7,425.0
1/15/2006	INDUCTION	470.0	7,445.0
2/1/2006	CBL/CCL/GR	1,960.0	7,378.0

