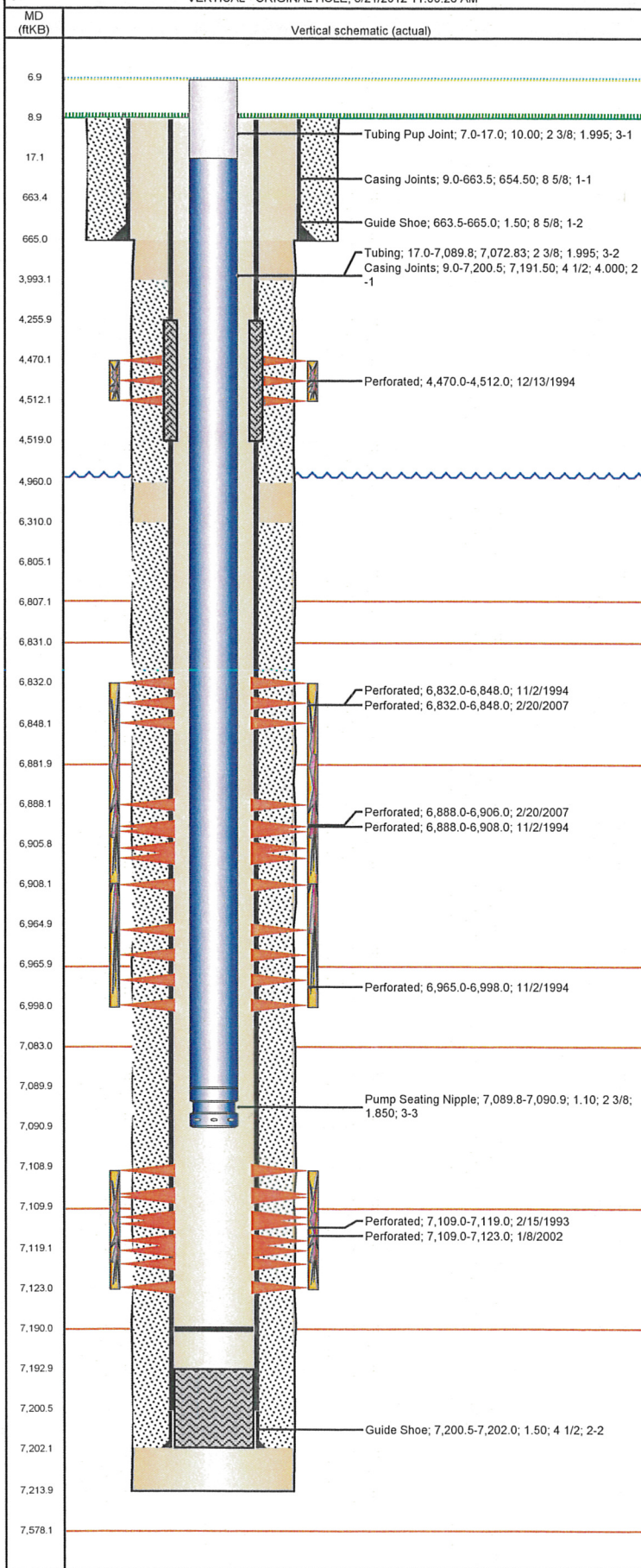


Well Name: UPRC 01-10J

VERTICAL - ORIGINAL HOLE, 6/21/2012 11:00:28 AM



## Well Header

API 05-123-16355	Business Unit WATTENBERG	District 15	Well Config VERTICAL
Original KB Elevation (ft) 4,897.00	KB - GL / MSL (ftKB) 9.00	Spud Date 2/3/1993	P & A Date

## Comment

## Directions To Well

WCR 38 & WCR 47, SOUTH 0.5, EAST 0.5 INTO

## Current PBTD (ftKB)

ORIGINAL HOLE - 7,190.0

## Surface Location (Congressional)

Quarter 1	Quarter 2	Quarter 3	Quarter 4	Section	Township	Twnshp N...	Range	Rng E/W Dir
		NW	SE	1	3	N	65	W

## Bottom Hole Location

North-South Distance (ft)	From N or S Line	East-West Distance (ft)	From E or W Line

## Plug Back Total Depths

Date	Depth (ftKB)	Method	Com
2/15/1993	7,193.0	CASED HOLE LOG	DEPTH-LOGGER ON CBL
12/7/2007	7,193.0	TAG	C/O LAND TBG

## Wellbore Sections

Section Des	Size (in)	Act Top (ftKB)	Act Btm (ftKB)
SURFACE	12 1/4	9.0	665.0
PRODUCTION	7 7/8	665.0	7,214.0

## Zone Statuses

Zone Name	Status Date	Status	Job
CODELL	2/24/1993	PR	DRILLING/COMPLETION - ORIGINAL, 2/3/1993 00:00
CODELL	11/3/1994	SI	RECOMPLETION, 11/2/1994 00:00
CODELL	3/23/1995	PR	RECOMPLETION, 11/2/1994 00:00
CODELL	1/16/2002	PR	RE-FRAC, 12/31/2001 00:00
CODELL	2/15/2007	SI	RE-FRAC, 2/7/2007 00:00
CODELL	12/13/2007	PR	RE-FRAC, 2/7/2007 00:00
CODELL	2/6/2012	PR	TRI-FRAC, 12/2/2011 10:30
NIOBRARA	12/13/1994	SI	RECOMPLETION, 11/2/1994 00:00
NIOBRARA	3/23/1995	PR	RECOMPLETION, 11/2/1994 00:00
NIOBRARA	4/14/2007	PR	RE-FRAC, 2/7/2007 00:00
NIOBRARA	12/13/2007	PR	RE-FRAC, 2/7/2007 00:00
SUSSEX	1/7/1995	PR	RECOMPLETION, 11/2/1994 00:00
SUSSEX	3/23/1995	PR	RECOMPLETION, 11/2/1994 00:00
SUSSEX	2/13/2007	PR	RE-FRAC, 2/7/2007 00:00

## Casing Strings

Csg Des	Run Date	OD (in)	Wt/Len (lb/ft)	Grade	Top (ftKB)	Set Depth (ftKB)
Surface Casing	2/3/1993	8 5/8	23.00	WC-50	9.0	665.0
Production	2/7/1993	4 1/2	11.60	M-75	9.0	7,202.0

## Cement

Des	Top (ftKB)	Btm (ftKB)
SURFACE CASING CEMENT	9.0	665.0
PRODUCTION CASING CEMENT	3,993.0	4,960.0
PRODUCTION CASING CEMENT	6,310.0	7,202.0
CEMENT SQZ'D SUSSEX PERFS	4,256.0	4,519.0

## Tubing Components

Item Des	OD (in)	Wt (lb/ft)	Grade	Jts	Len (ft)
Tubing Pup Joint	2 3/8	4.70	J-55	1	10.00
Tubing	2 3/8	4.70	J-55	230	7,072.83
Pump Seating Nipple	2 3/8	4.70	J-55	1	1.10

## Perforation Data

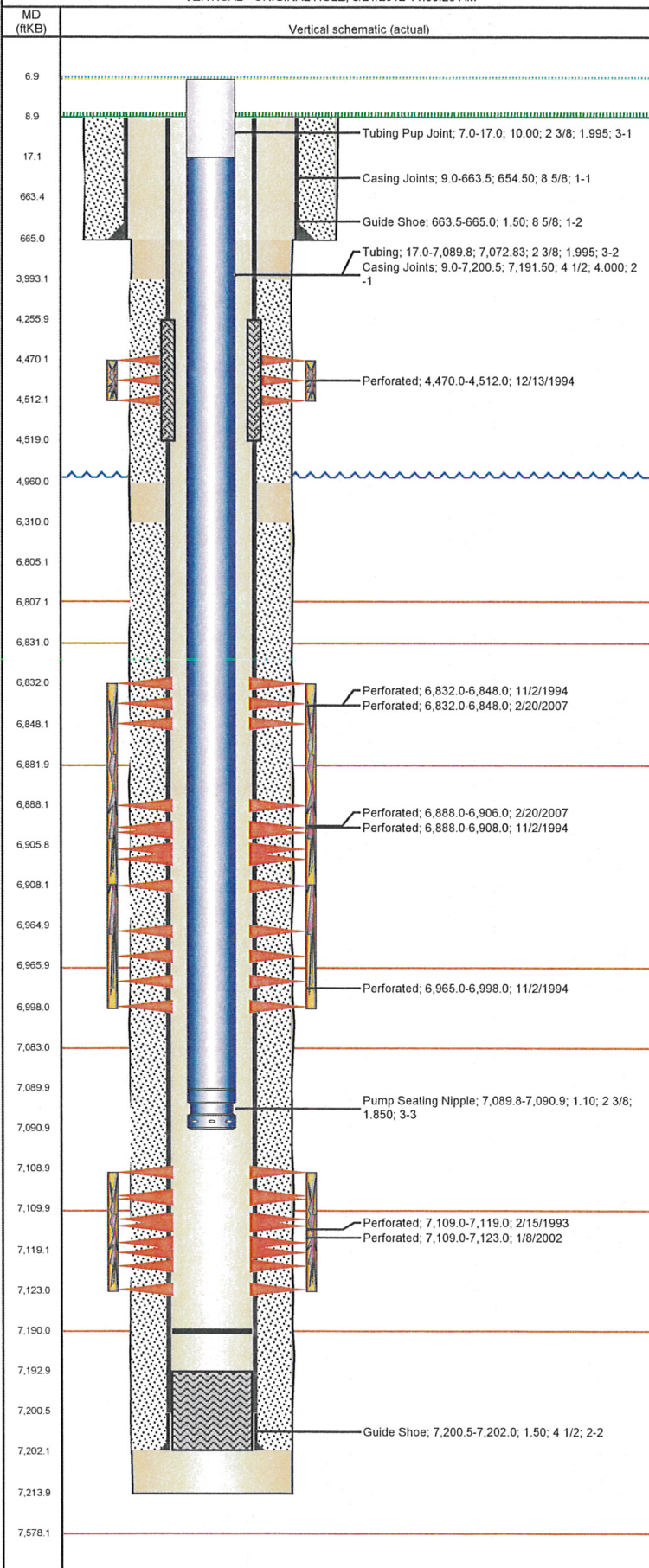
Zone	Bnch/St g	Entered Shot Total	Top (ftKB)	Btm (ftKB)	Date
SUSSEX, ORIGINAL HOLE		84	4,470.0	4,512.0	12/13/1994
NIOBRARA, ORIGINAL HOLE	A	64	6,832.0	6,848.0	2/20/2007
NIOBRARA, ORIGINAL HOLE	A	32	6,832.0	6,848.0	11/2/1994
NIOBRARA, ORIGINAL HOLE	B	72	6,888.0	6,906.0	2/20/2007
NIOBRARA, ORIGINAL HOLE	B	40	6,888.0	6,908.0	11/2/1994



# Frac Wellbore Schematic Report

Well Name: UPRC 01-10J

VERTICAL - ORIGINAL HOLE, 6/21/2012 11:00:29 AM



## Perforation Data

Zone	Bnch/Stg	Entered Shot Total	Top (ftKB)	Btm (ftKB)	Date
NIOBRARA, ORIGINAL HOLE	C	66	6,965.0	6,998.0	11/2/1994
CODELL, ORIGINAL HOLE		20	7,109.0	7,119.0	2/15/1993
CODELL, ORIGINAL HOLE		56	7,109.0	7,123.0	1/8/2002

## Stimulations & Treatments

Bnch/Stg	Date	Zone	Primary Job Type
	2/16/1993	CODELL, ORIGINAL HOLE	DRILLING/COMPLETION - ORIGINAL

Comment

Total Add Amount	Total Clean Volume...	Vol Slurry Tot (gal)	Vol Gas Tot (MCF)
Proppant 190000 lb		64008.00	
Avg Treat Pressure (psi)	Max Treat Pressure (psi)	Avg Treat Rate (bbl/min)	Max Treat Rate (bbl/min)
4,000.0	4,400.0	10.80	12.00

Bnch/Stg	Date	Zone	Primary Job Type
	11/8/1994	NIOBRARA, ORIGINAL HOLE	RECOMPLETION

Comment

Total Add Amount	Total Clean Volume...	Vol Slurry Tot (gal)	Vol Gas Tot (MCF)
Proppant 500440 lb		172662.00	
Avg Treat Pressure (psi)	Max Treat Pressure (psi)	Avg Treat Rate (bbl/min)	Max Treat Rate (bbl/min)
4,000.0		33.00	33.00

Bnch/Stg	Date	Zone	Primary Job Type
	12/27/1994	SUSSEX, ORIGINAL HOLE	RECOMPLETION

Comment

## FORCED CLOSURE

Total Add Amount	Total Clean Volume...	Vol Slurry Tot (gal)	Vol Gas Tot (MCF)
Proppant 300000 lb		90342.00	
Avg Treat Pressure (psi)	Max Treat Pressure (psi)	Avg Treat Rate (bbl/min)	Max Treat Rate (bbl/min)
1,750.0	2,506.0	30.00	30.30

Bnch/Stg	Date	Zone	Primary Job Type
	1/9/2002	CODELL, ORIGINAL HOLE	RE-FRAC

Comment

Total Add Amount	Total Clean Volume...	Vol Slurry Tot (gal)	Vol Gas Tot (MCF)
Proppant Ottawa 246620 lb	5687136.19	135408.01	
Avg Treat Pressure (psi)	Max Treat Pressure (psi)	Avg Treat Rate (bbl/min)	Max Treat Rate (bbl/min)
4,232.0	5,183.0	8.50	8.80

Bnch/Stg	Date	Zone	Primary Job Type
	3/27/2007	NIOBRARA, ORIGINAL HOLE	RE-FRAC

Comment

## PACKER FAILURE 144BBLs INTO SLKWTR PAD; SHUT DWN

Total Add Amount	Total Clean Volume...	Vol Slurry Tot (gal)	Vol Gas Tot (MCF)
		6552.00	
Avg Treat Pressure (psi)	Max Treat Pressure (psi)	Avg Treat Rate (bbl/min)	Max Treat Rate (bbl/min)
6,830.0	7,476.0	0.42	0.48

Bnch/Stg	Date	Zone	Primary Job Type
	4/12/2007	NIOBRARA, ORIGINAL HOLE	RE-FRAC

Comment

Total Add Amount	Total Clean Volume...	Vol Slurry Tot (gal)	Vol Gas Tot (MCF)
Proppant Ottawa 253000 lb		169008.00	
Avg Treat Pressure (psi)	Max Treat Pressure (psi)	Avg Treat Rate (bbl/min)	Max Treat Rate (bbl/min)
6,999.0	7,646.0	24.03	25.92

Bnch/Stg	Date	Zone	Primary Job Type
	12/16/2011	CODELL, ORIGINAL HOLE	TRI-FRAC

Comment

(CODELL):5 MIN SHUT IN PSI 3621 EVERYTHING WENT GOOD.

Total Add Amount	Total Clean Volume...	Vol Slurry Tot (gal)	Vol Gas Tot (MCF)
Proppant Ottawa 247571.307 lb	130312.98	141538.33	
Avg Treat Pressure (psi)	Max Treat Pressure (psi)	Avg Treat Rate (bbl/min)	Max Treat Rate (bbl/min)
5,386.7	6,262.0	18.53	18.53

## Other In Hole

Run Date	Des	OD (in)	Top (ftKB)	Btm (ftKB)

## Logs

Date	Type	Top (ftKB)	Btm (ftKB)
2/7/1993	COMPENSATED DENSI	4,350.0	7,211.0
2/7/1993	INDUCTION	665.0	7,211.0
2/16/1993	SONIC CEMENT	4,350.0	7,211.0