

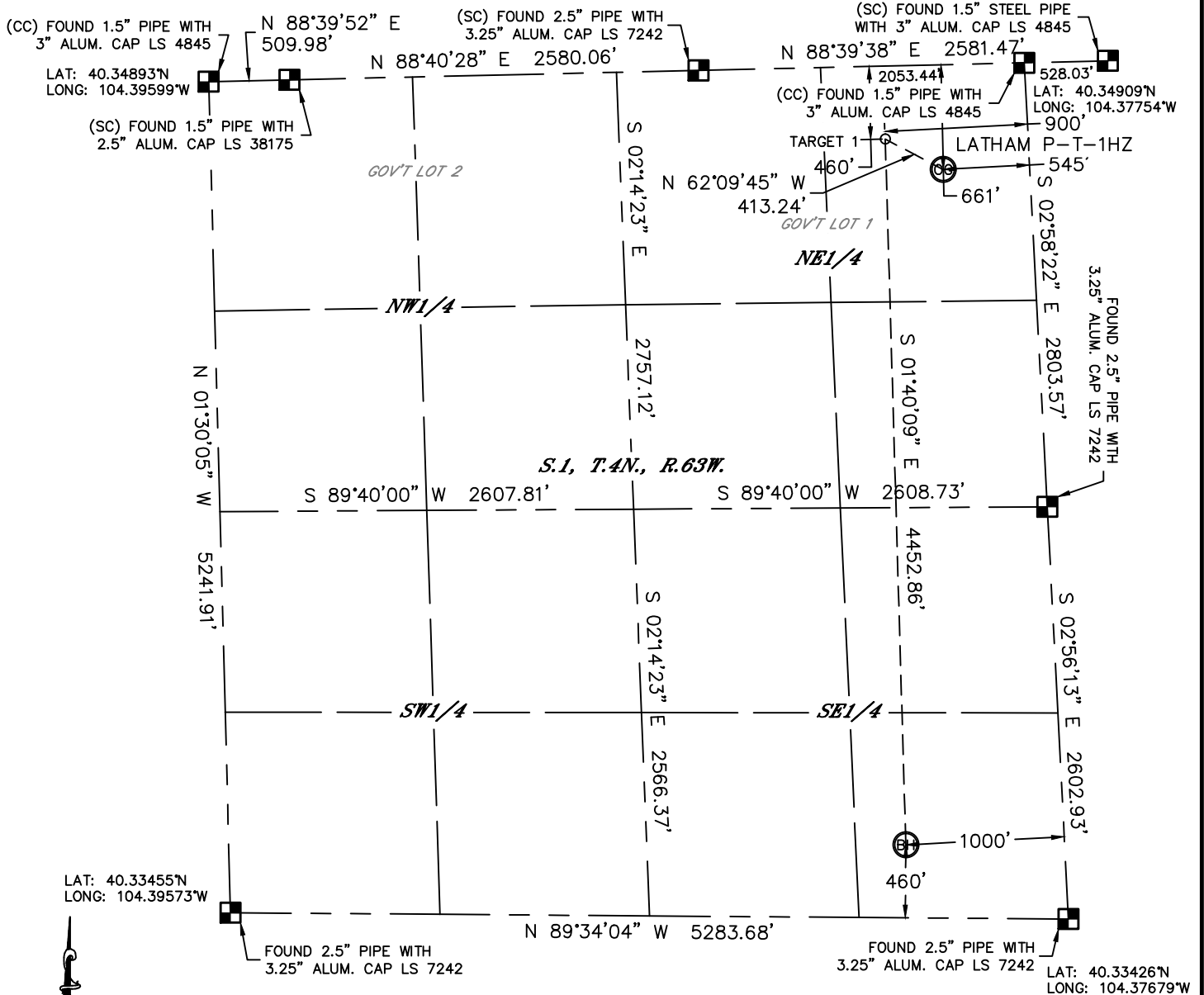


Lat40°, Inc. 1635 Foxtrail Drive, Suite 325 Loveland, CO 970-776-3321

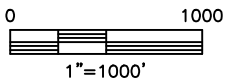
WELL LOCATION CERTIFICATE

THIS MAP DOES NOT REPRESENT A BOUNDARY SURVEY

SECTION: 1
TOWNSHIP: 4N
RANGE: 63W



LAT: 40.33455°N
LONG: 104.39573°W



In accordance with a request from Keith Caplan with BONANZA CREEK ENERGY, INC. Lat40°, Inc. has determined the surface location of the LATHAM P-T-1HZ to be 661' from the NORTH line and 545' from the EAST line and the bottom hole to be 460' from the SOUTH line and 1000' from the EAST line as measured at right angles from the section lines of Section 1, Township 4 North, Range 63 West of the Sixth Principal Meridian, County of Weld, State of Colorado.

I hereby state that this Well Location Certificate was prepared by me, or under my direct supervision, that the fieldwork was completed on 5/24/2012, for and on behalf of BONANZA CREEK ENERGY, INC. That this is not a Land Survey Plat or an Improvement Survey Plat, and that it is not to be relied upon for establishment of fence, building, or other future improvement lines.

NOTE:

- 1) Bearings shown are Grid Bearings of the Colorado State Plane Coordinate System, North Zone, North American Datum 1983/2007. The lineal dimensions as contained herein are based upon the "U.S. Survey Foot."
- 2) Ground elevations are based on an observed GPS elevation (NAVD 1988 DATUM).
- 3) IMPROVEMENTS: See LOCATION DRAWING for all visible improvements within 400' of disturbed area.
- 4) SURFACE USE: RANGE LAND
- 5) INSTRUMENT OPERATOR: WYATT HALL

SURFACE LOCATION

LATITUDE: 40.34725°N
LONGITUDE: 104.37940°W
PDOP: 1.5
ELEV: 4545'
1/4, 1/4: NE1/4NE1/4
NEAREST PROPERTY LINE: 545' E

TARGET 1

LATITUDE: 40.34780°N
LONGITUDE: 104.38070°W
1/4, 1/4: NE1/4NE1/4

BOTTOM HOLE

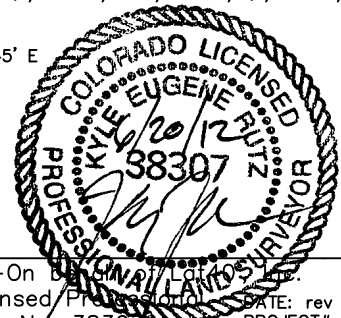
LATITUDE: 40.33558°N
LONGITUDE: 104.38044°W
1/4, 1/4: SE1/4SE1/4

NOTE

According to Colorado law, you must commence any legal action based upon any defect in this W.L.C. within three years after you discover such defect. In no event, may any action based upon any defect in this survey be commenced more than ten years after the date of the certificate shown hereon. (13-80-105 C.R.S.)

LEGEND

- = ALIQUOT MONUMENT AS DESCRIBED
- = CALCULATED POSITION



Kyle E. Rutz—On 6/20/2012
Colorado Licensed Professional Land Surveyor No. 38307
DATE: rev 6/20/2012
PROJECT#: 2011338