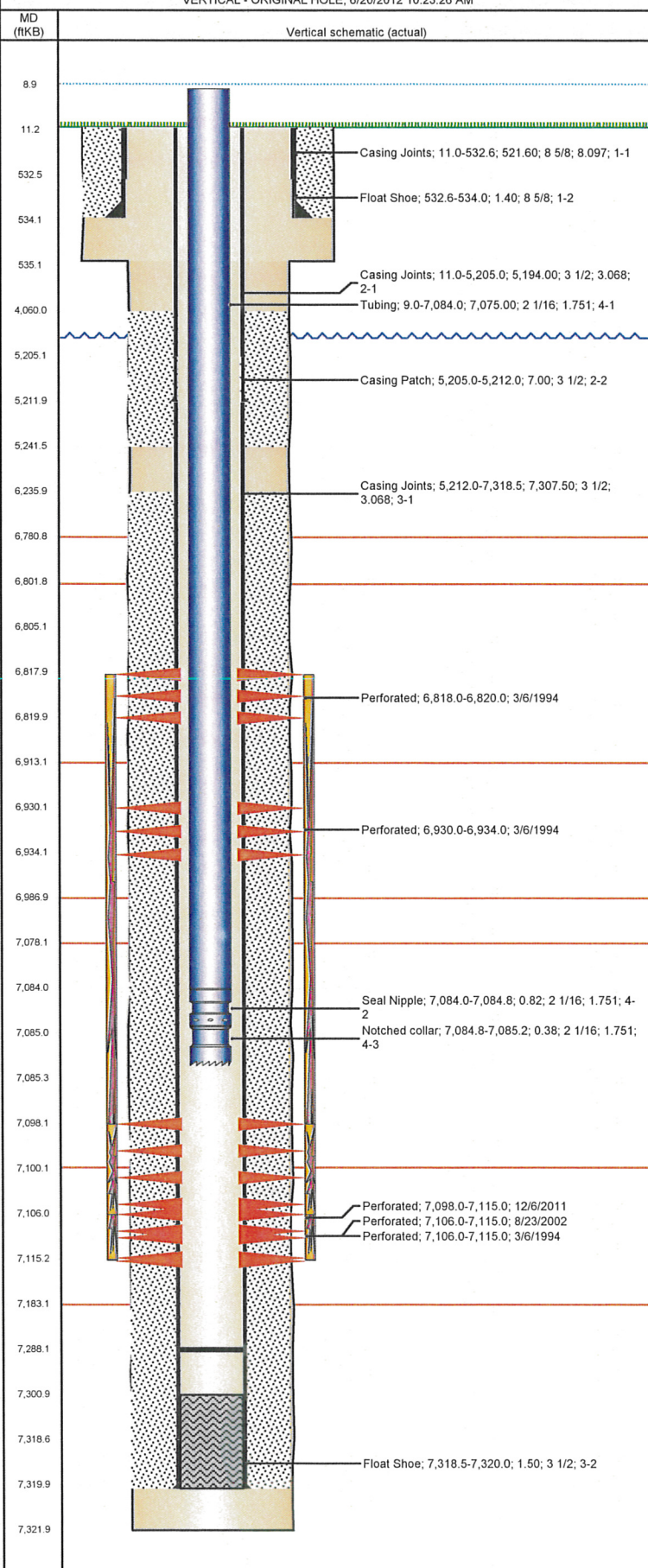


Well Name: KNAUS 28-08G6

VERTICAL - ORIGINAL HOLE, 6/20/2012 10:23:26 AM



Well Header

API 05-123-17596	Business Unit WATTENBERG	District 15	Well Config VERTICAL
Original KB Elevation (ft) 4,724.00	KB - GL / MSL (ftKB) 11.00	Spud Date 2/26/1994	P & A Date

Comment
CONFLICTING DATA ON PATCH & CEMENT, Frac'd into Doering 2-28

Directions To Well
ROAD 66 AND ROAD 31, SOUTH .4, WEST INTO.

Surface Location (Congressional)

Quarter 1	Quarter 2	Quarter 3	Quarter 4	Section	Township	Twntshp...	Range	Rng E/W...
		SE	NE	28	6	N	66	W

Bottom Hole Location

North-South Distance (ft)	From N or S Line	East-West Distance (ft)	From E or W Line

Plug Back Total Depths

Date	Depth (ftKB)	Method	Com
3/2/1994	7,301.0	CASING TALLY	LATCH DOWN BAFFLE
4/2/2007	6,930.0	CASED HOLE LOG	DEPTH LOGGER
12/5/2011	7,296.5	TUBING TALLY	
12/22/2011	7,288.0	TAG	TUBING TALLY

Wellbore Sections

Section Des	Size (in)	Act Top (ftKB)	Act Btm (ftKB)
SURFACE	12 1/4	11.0	535.0
PRODUCTION	7 7/8	535.0	7,322.0

Zone Statuses

Zone Name	Status Date	Status	Job
CODELL	3/16/1994	PR	DRILLING/COMPLETION - ORIGINAL, 2/26/1994 00:00
CODELL	10/28/2002	PR	RE-FRAC, 8/21/2002 00:00
CODELL	1/30/2012	PR	TRI-FRAC, 12/1/2011 06:00
NIOBRARA	3/16/1994	PR	DRILLING/COMPLETION - ORIGINAL, 2/26/1994 00:00

Casing Strings

Surface, 534.0ftKB

Casing Description	Run Date	OD (in)	Wt/Len (lb/ft)	Grade	Top (ftKB)	Set Depth...
Surface	2/26/1994	8 5/8	24.00	J-55	11.0	534.0

Production, 5,212.0ftKB

Casing Description	Run Date	OD (in)	Wt/Len (lb/ft)	Grade	Top (ftKB)	Set Depth...
Production	4/5/2007	3 1/2	7.70	N-80	11.0	5,212.0

Production, 7,320.0ftKB

Casing Description	Run Date	OD (in)	Wt/Len (lb/ft)	Grade	Top (ftKB)	Set Depth...
Production	3/2/1994	3 1/2	7.70	B70	11.0	7,320.0

Cement

Description	Top Depth (ftKB)	Bottom Depth (ftKB)
SURFACE CASING CEMENT	11.0	534.0
Description	Top Depth (ftKB)	Bottom Depth (ftKB)
PRODUCTION CASING CEMENT	6,236.0	7,320.0
Description	Top Depth (ftKB)	Bottom Depth (ftKB)
CASING REPAIR ANNULAR CEMENT	4,060.0	5,241.3

Tubing Components

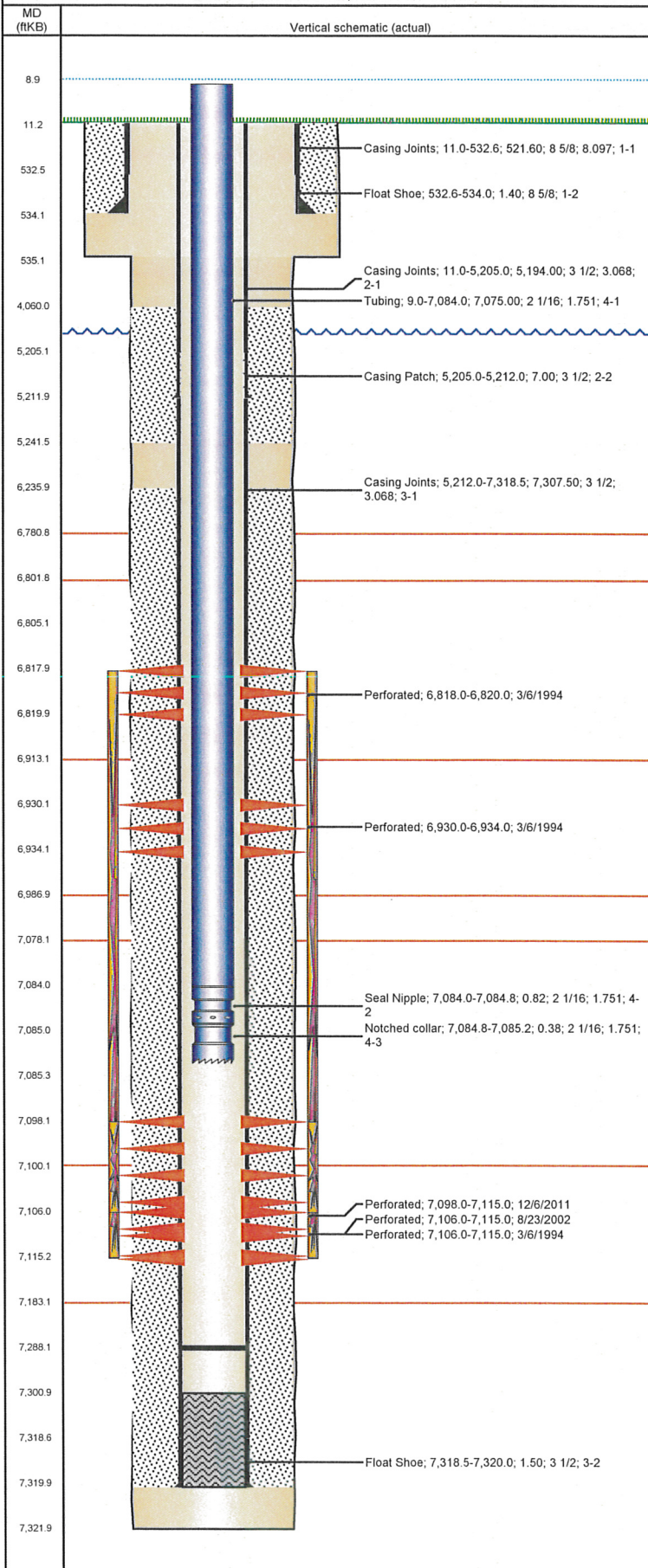
Item Des	OD (in)	Wt (lb/ft)	Grade	Jts	Len (ft)	Btm (ftKB)	Btm (TVD) (ftKB)
Tubing	2 1/16	3.25	J-55	215	7,075.00	7,084.0	
Seal Nipple	2 1/16	3.25	J-55	1	0.82	7,084.8	
Notched collar	2 1/16	3.25	J-55	1	0.38	7,085.2	

Perforation Data

Zone	Bnch/St g	Entered Shot Total	Top (ftKB)	Btm (ftKB)	Date
NIOBRARA, ORIGINAL HOLE		3	6,818.0	6,820.0	3/6/1994
NIOBRARA, ORIGINAL HOLE		4	6,930.0	6,934.0	3/6/1994
CODELL, ORIGINAL HOLE		34	7,098.0	7,115.0	12/6/2011
CODELL, ORIGINAL HOLE		48	7,106.0	7,115.0	8/23/2002
CODELL, ORIGINAL HOLE		9	7,106.0	7,115.0	3/6/1994

Well Name: KNAUS 28-08G6

VERTICAL - ORIGINAL HOLE, 6/20/2012 10:23:27 AM



Stimulations & Treatments

Date	Zone	Primary Job Type
3/7/1994	NIOBRARA-CODELL, ORIGINAL HOLE	DRILLING/COMPLETION - ORIGINAL
Technical Result	Tech Result Details	Tech Result Note

Comment
CDL/NIO LIMITED ENTRY

Date	Zone	Primary Job Type
10/28/2002	CODELL, ORIGINAL HOLE	RE-FRAC
Technical Result	Tech Result Details	Tech Result Note

Comment

Date	Zone	Primary Job Type
12/15/2011	CODELL, ORIGINAL HOLE	TRI-FRAC
Technical Result	Tech Result Details	Tech Result Note

Failure
Comment
(COD TF): PACKER FAILURE

Date	Zone	Primary Job Type
12/19/2011	CODELL, ORIGINAL HOLE	TRI-FRAC
Technical Result	Tech Result Details	Tech Result Note

Success
According to Plan
Comment
(CODELL TRIFRAC): 5 MIN SHUT IN PSI 2707 , JOB WENT GOOD NO ISSUES.DID NOT SEE A BREAK DOWN PSI.

Other In Hole

Run Date	Des	OD (in)	Top (ftKB)	Btm (ftKB)

Logs

Date	Type	Top (ftKB)	Btm (ftKB)
3/2/1994	INDUCTION	536.0	7,320.0
3/7/1994	GAMMA RAY	6,550.0	7,268.0
4/2/2007	CBL/CCL/GR	6,094.0	6,928.0