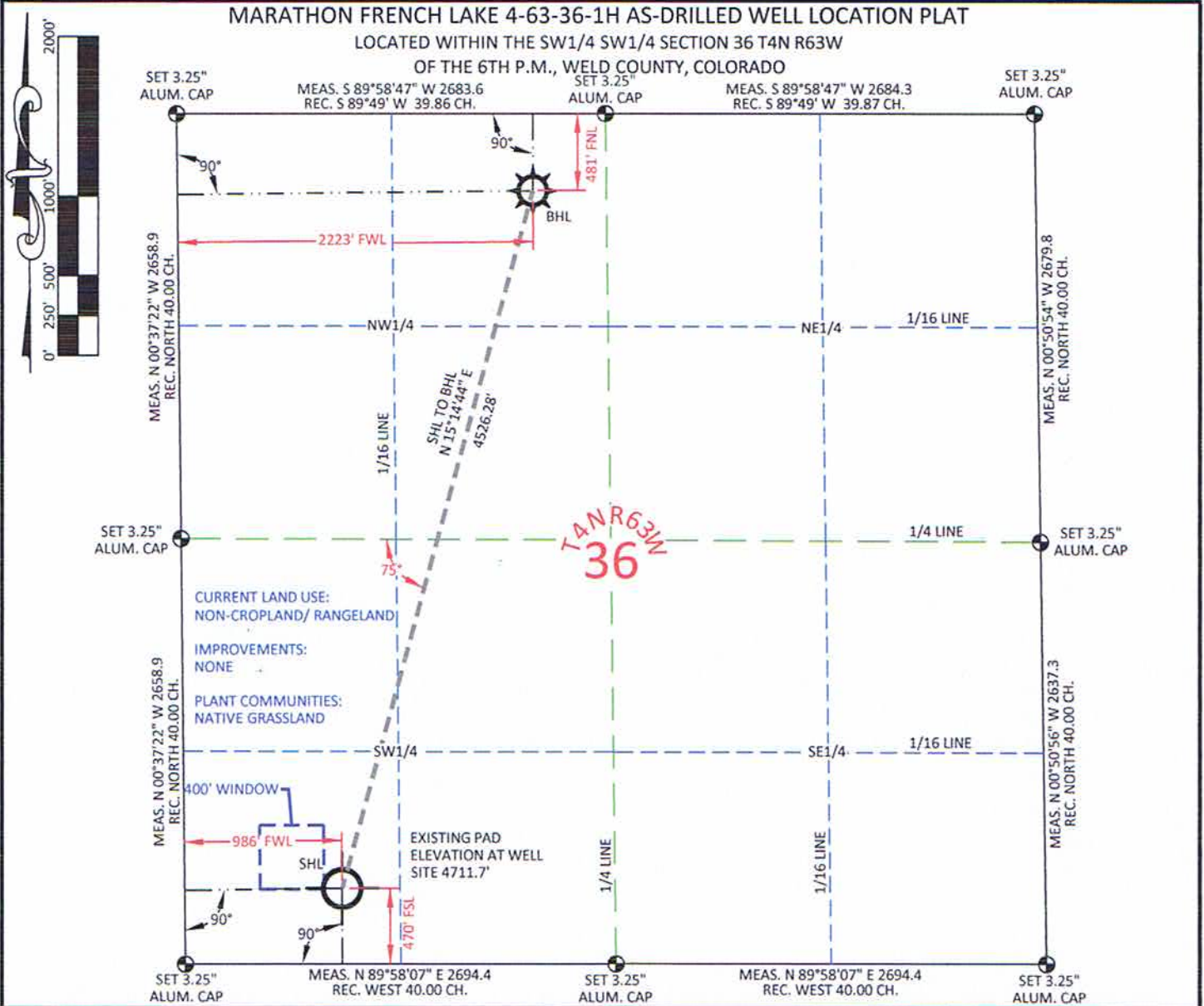


MARATHON FRENCH LAKE 4-63-36-1H AS-DRILLED WELL LOCATION PLAT

LOCATED WITHIN THE SW1/4 SW1/4 SECTION 36 T4N R63W

OF THE 6TH P.M., WELD COUNTY, COLORADO



SURFACE HOLE (AS-DRILLED)

GEOGRAPHIC COORDINATES	LAT.	40.262505°
STATE PLANE COORDINATES	LONG.	104.392058°
STATE PLANE COORDINATES	LAT.	40.262524°
STATE PLANE COORDINATES	LONG.	104.391548°
STATE PLANE COORDINATES	LAT.	40°15'45.02"
STATE PLANE COORDINATES	LONG.	104°23'31.41"
STATE PLANE COORDINATES	LAT.	40°15'45.09"
STATE PLANE COORDINATES	LONG.	104°23'29.57"
STATE PLANE COORDINATES	NORTH	1340403.74
STATE PLANE COORDINATES	EAST	3309191.16
STATE PLANE COORDINATES	NORTH	340406.43
STATE PLANE COORDINATES	EAST	2309341.55

BOTTOM HOLE (AS-DRILLED)

GEOGRAPHIC COORDINATES	LAT.	40.274451°
STATE PLANE COORDINATES	LONG.	104.387597°
STATE PLANE COORDINATES	LAT.	40.274470°
STATE PLANE COORDINATES	LONG.	104.387087°
STATE PLANE COORDINATES	LAT.	40°16'28.02"
STATE PLANE COORDINATES	LONG.	104°23'15.35"
STATE PLANE COORDINATES	LAT.	40°16'28.09"
STATE PLANE COORDINATES	LONG.	104°23'13.51"
STATE PLANE COORDINATES	NORTH	1344770.73
STATE PLANE COORDINATES	EAST	3310381.37
STATE PLANE COORDINATES	NORTH	344773.33
STATE PLANE COORDINATES	EAST	2310531.71

I, Rodney A. Walters, Professional Land Surveyor, CO. RLS # 16847 hereby certify that (in accordance with a request from Erin Bibeau with Marathon Oil Co, 5555 San Felipe, Houston, TX 77056) I and or personnel under my direction made a survey on the 11th day of October 2011, for the Surface Hole Location and Elevation of Marathon Oil Co. FRENCH LAKE 4-63-36-1H being located within the SW1/4 SW1/4 Section 36, T4N R63W, and the Bottom Hole Location being located in the NE1/4 NW1/4 of Section 36, T4N, R63W, both being of the 6th P.M., Weld County, State of Colorado.

- All bearings and distances are GRID, based on the Colorado State Plane Coordinate System, North Zone, North American Datum 1983 from GPS observations occupying a WHS control point (5/8" rebar) and having the Location and Elevation derived from an Opus Solution.
- Vertical Datum used is of NAVD 88.
- Record Bearings and Distances as shown are based on the General Land Office Survey plat approved on the 24th day of November 1868.
- Geographic coordinates for the bottom hole location were taken from the wellpath report prepared by Baker Hughes for Antelope Draw 17-61-19-1H and dated 10/27/2011.



CONFIDENTIALITY NOTES:

The information contained in this plat is legally privileged and confidential information intended only for the use of the recipients. If you are not the intended recipients, you are hereby notified that any use, dissemination, distribution or copying of this information is strictly prohibited.



WILLIAM H. SMITH & ASSOCIATES P.C.
SURVEYING CONSULTANTS
550 EAST SECOND NORTH GREEN RIVER, WY
PHONE: 307-875-3638
307-875-3639
www.wsmithpc.com

DRAWN BY: LAL	CHECKED BY: RAW
PROJECT NO: 463361H	JOB NO: 2011001
REVISIONS:	

- ### LEGEND
- FOUND CORNER
 - CALCULATED CORNER
 - NOTHING FOUND

LOCATION:
FRENCH LAKE 4-63-36-1H
WITHIN THE SW/4
SW/4 SECTION 36,
T 4 N, R 63 W,
6TH P.M.
WELD COUNTY,
COLORADO

MARATHON OIL COMPANY
PO BOX 3128, HOUSTON TX, 77253
5555 SAN FELIPE, HOUSTON TX, 77056

**AS-DRILLED
WELL LOCATION PLAT**

SCALE: 1"=1000'	EXHIBIT "A"
DATE: 06/19/2012	SHEET 1 OF 1