

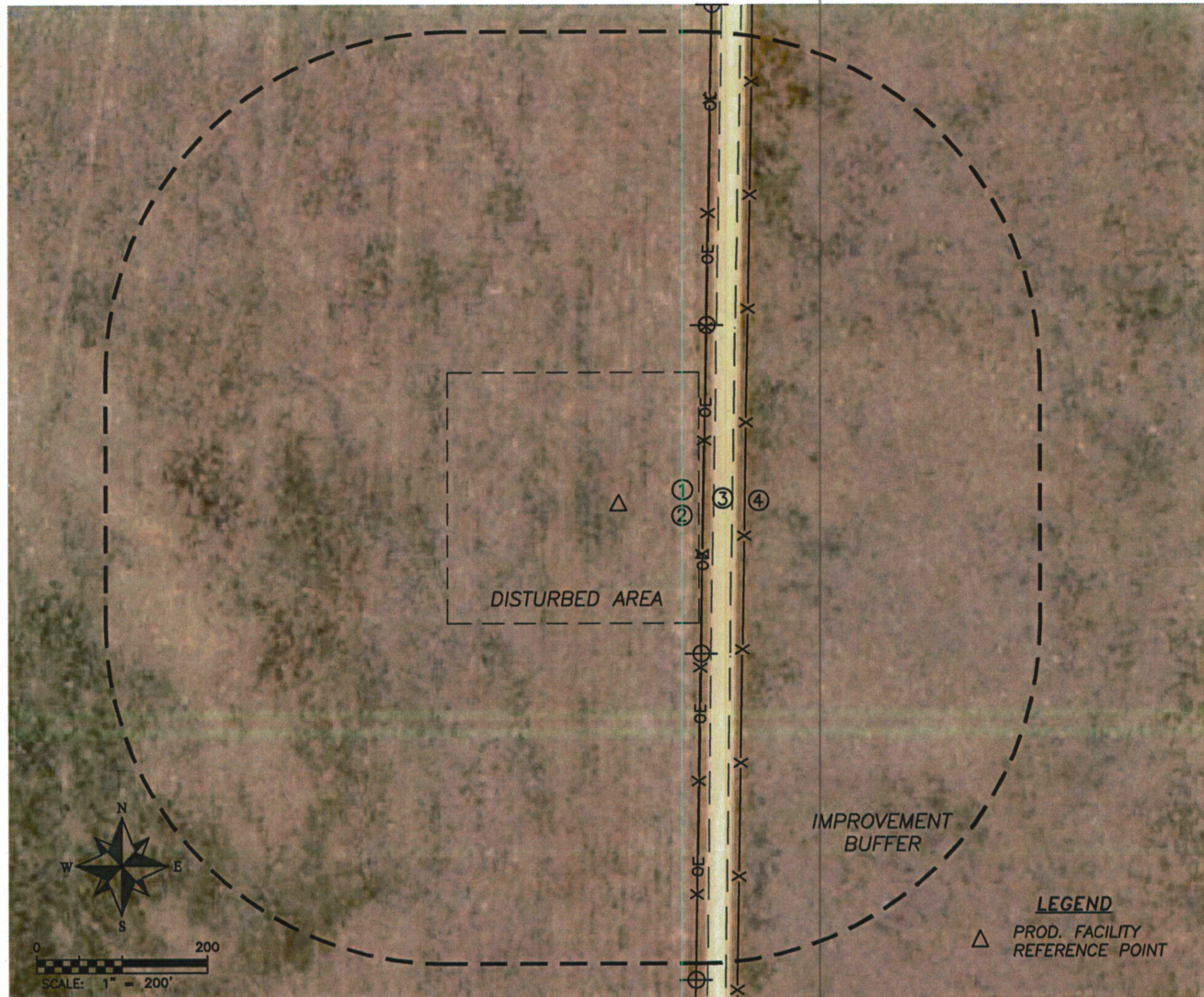
DALEY LAND SURVEYING, INC.

PARKER, CO. 80134

303 953 9841

## PRODUCTION FACILITY LOCATION DRAWING BETHYL GW30-16

SECTION 30, TOWNSHIP 8 NORTH, RANGE 63 WEST OF THE 6TH PRINCIPAL MERIDIAN



### REFERENCE POINT LOCATION:

LATITUDE: N40.62883°  
LONGITUDE: W104.46877°  
ELEV.: 4941'  
PDOP.: 1.3  
FOOTAGE: 1618' FSL, 123' FEL  
QTR/QTR: NE4/SE4  
DATE: 4/05/2012

### ASSOCIATED EXISTING WELLS:

ASSOCIATED NEW WELLS:  
BETHYL GW30-16

### DISTANCE TO NEAREST:

BUILDING: 1410'± SW  
PUBLIC ROAD: 111'± E  
OVERHEAD UTILITY: 100'± E  
RAILROAD: 5280'+  
PROP. LINE: 123'± E

### EXISTING FACILITIES:

TANKS: 0  
SEPARATORS: 0  
EMF: 0  
VOC: 0

### IMPROVEMENTS

1. WIRE FENCE:	99'± E
2. O.H. UTILITY:	100'± E
3. E EDGE WCR 63:	111'± E
2. WIRE FENCE:	148'± E