

LOCATION DRAWING

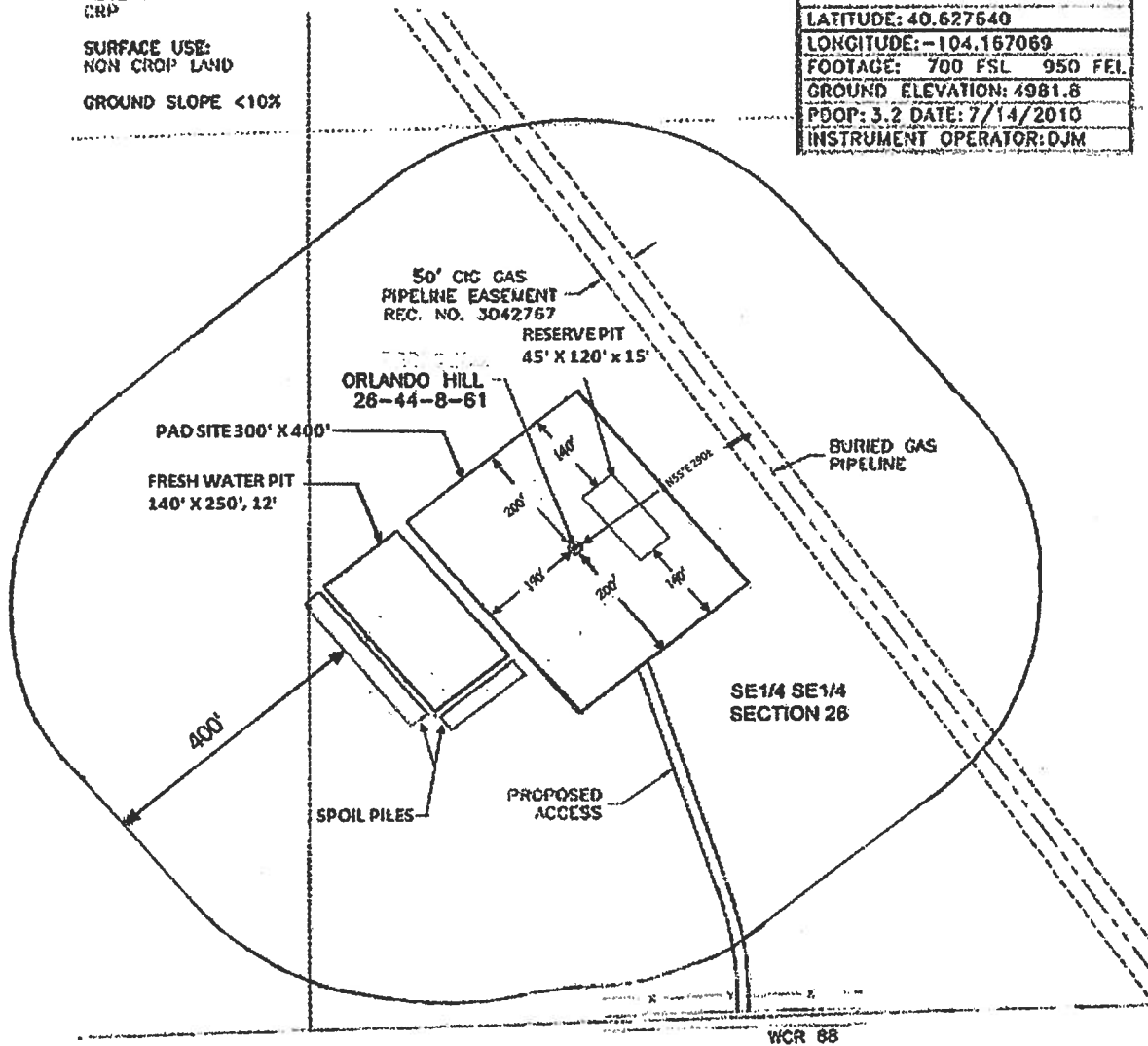
"AS BUILT"

VEGETATION:
CRP

SURFACE USE:
NON CROP LAND

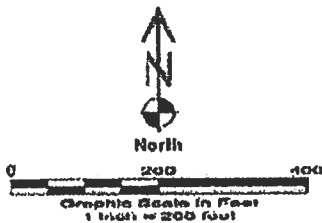
GROUND SLOPE <10%

ORLANDO HILL 26-44-8-61
LATITUDE: 40.627640
LONGITUDE: -104.167069
FOOTAGE: 700 FSL 950 FEL
GROUND ELEVATION: 4981.8
PDOP: 3.2 DATE: 7/14/2010
INSTRUMENT OPERATOR: DJM



DISTURBANCE ACREAGE:
3.9± DRILLING OPERATIONS
1.5± INTERIM RECLAIM

7/14/10



CARRIZO OIL & GAS, INC
ORLANDO HILL 26-44-8-61

SE1/4 SE1/4 SEC. 26 T8N R61W
8th PM WELD COUNTY COLORADO