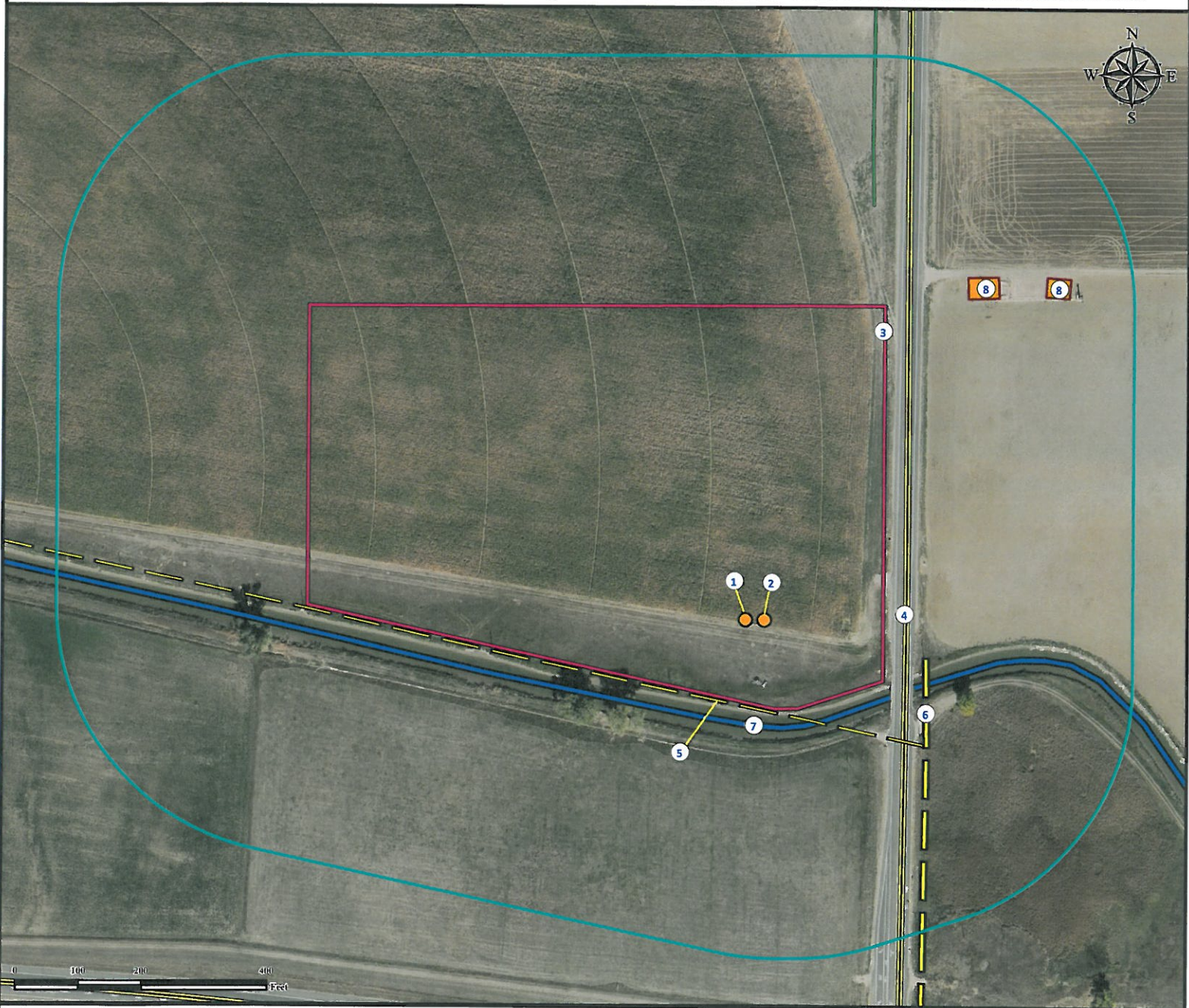


Location Drawing

MIRACLE 33N-12HZ

Horizontal Multi Well Pad

SE¼ SE¼ SECTION 12, TOWNSHIP 5 NORTH, RANGE 68 WEST OF THE 6TH PRINCIPAL MERIDIAN



- | | | |
|------------------------------------|--------------------------------|---|
| 1. Proposed well MIRACLE 33N-12HZ. | 4. County Road 13 is ±258' E. | 7. Canal is ±165' SW. |
| 2. Proposed well MIRACLE 13C-12HZ. | 5. Minor Power Line is ±139' S | 8. Existing facilities are ±626' NE and ±707' NE. |
| 3. Operational Disturbance Area. | 6. Power Line is ±296' SE. | |

Legend

- | | | |
|--|--|---|
| <ul style="list-style-type: none"> ● Proposed Well Disturbance Area | <ul style="list-style-type: none"> 400' Radius Facilities Enclosure Canal | <ul style="list-style-type: none"> Powerline Public Road Underground Pipeline |
|--|--|---|

Reference Location

** All Measurements are Made from Reference Well MIRACLE 33N-12HZ **
 Lat: 40.408929° Long:-104.945458° (NAD83)
 Elevation: 4951 Feet

Surface Use: Dry Land Crop



Use our resources to find yours!
www.petro-fs.com
 (303) 928-7128

Field Date: 03/13/2012
 Drafting Date: 05/01/2012
 Drafter: KLM
 Checked By: BHF

Data Sources:
 - Aerial courtesy of Anadarko Petroleum Corporation (2010)

Prepared for:



KERR-MCGEE OIL & GAS ONSHORE LP