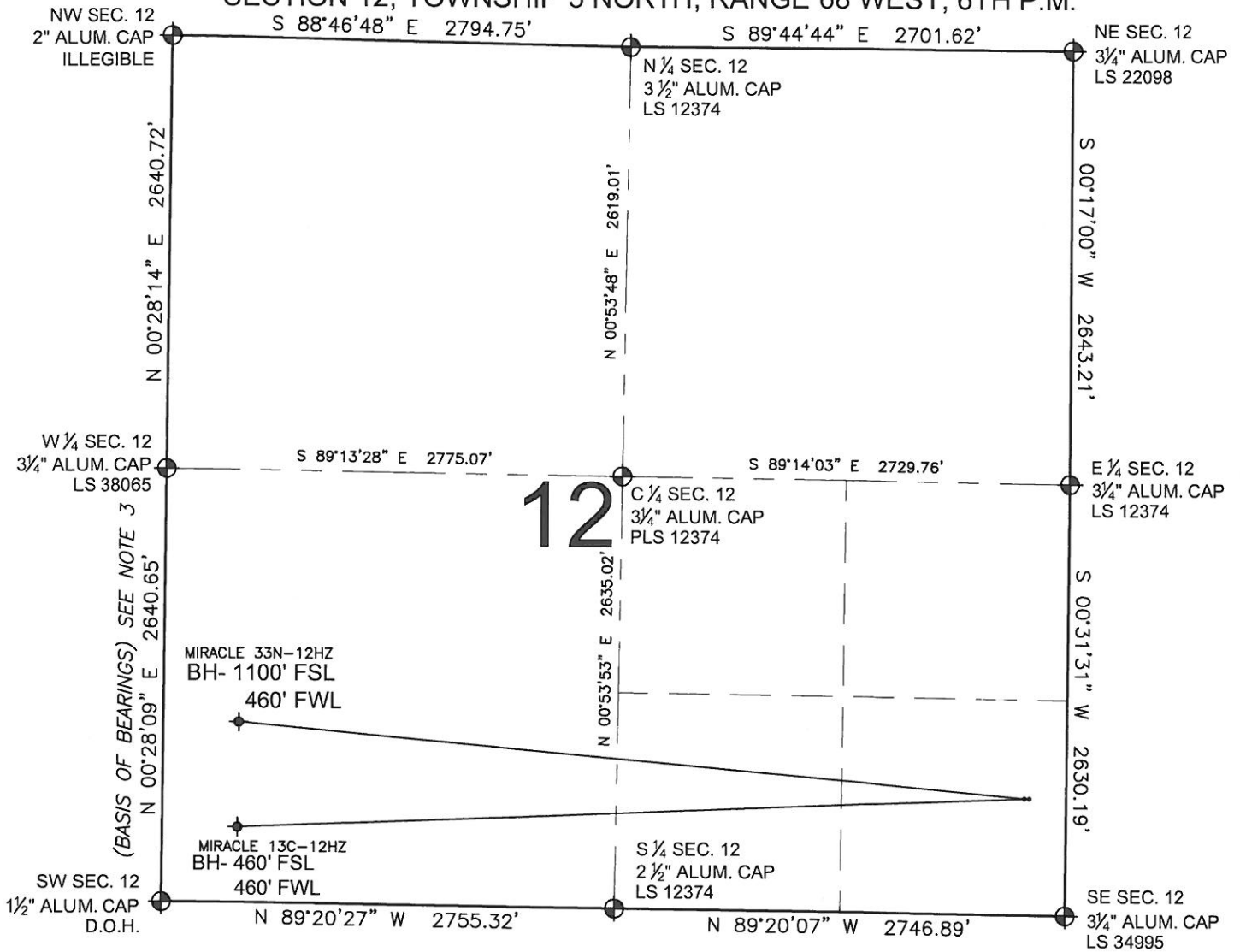


PAD DRAWING: MIRACLE 2 PAD

SECTION 12, TOWNSHIP 5 NORTH, RANGE 68 WEST, 6TH P.M.



LEGEND

- ⊕ = EXISTING MONUMENT
- = PROPOSED WELL
- ◆ = BOTTOM HOLE
- ◆ = EXISTING WELL
- BH= BOTTOM HOLE

NOTES:

- THIS FIELD SURVEY CONFORMS TO THE MINIMUM STANDARDS SET BY THE C.O.G.C.C., RULE NO. 215
- HORIZONTAL POSITIONS AND ORTHOMETRIC ELEVATIONS SHOWN AT THE WELL HEAD, ARE BASED ON GPS-RTK POSITIONS DERIVED FROM MINIMUM 2-HOUR STATIC OBSERVATIONS CORRECTED BY THE NATIONAL GEODETIC SURVEY ONLINE POSITIONING USER SERVICE, O.P.U.S. DATUM: HORIZONTAL = NAD83/2007, VERTICAL = NAVD88
- THE BASIS OF BEARINGS ARE STATE PLANE COORDINATE SYSTEM GRID BEARINGS SHOWN HEREON BETWEEN THE DESCRIBED THE MONUMENTS SHOWN HEREON.
- GRID DISTANCES ARE SHOWN, AS MEASURED IN THE FIELD, WITH TIES TO WELLS MEASURED PERPENDICULAR TO SECTION LINES.

NOTES:

- MIRACLE 33N-12HZ TO BE AT 712' FSL, 255' FEL.
 BOTTOM HOLE AT 1100' FSL & 460' FWL.
 MIRACLE 13C-12HZ TO BE AT 712' FSL, 225' FEL.
 BOTTOM HOLE AT 460' FSL & 460' FWL.

PREPARED BY:

PFS 
 Petroleum Field Services, LLC
 1801 W. 13th Ave.
 Denver, CO 80204

KERR-MCGEE OIL & GAS ONSHORE LP

FIELD DATE: 03-13-12	PAD NAME: MIRACLE 2 PAD
DRAWING DATE: 05-01-12	SURFACE LOCATION: LARIMER COUNTY, COLORADO
BY: KAG	CHECKED: TJN
SE 1/4 SE 1/4, SEC. 12, T5N, R68W, 6TH P.M.	

