

2011 ANNUAL PROJECT SUMMARY TABLE

Incident Date	Remediation No.	Well Name	API	Status	NFA Proposed	NFA Approved Date	2011 Site Summary (monitoring/remediation/ Wells installed or destroyed)	Wells Sampled (Last Quarter) 2011	Wells Exceeding 5 ug/L Benzene (Last Quarter Sampled 2011)	Benzene Range (Last Quarter Sampled 2011)	POC Reached	2012 Recommendations	Well Reduction Request
6/26/2008	4369	Wass #5	05-123-13781	Monitoring	NO	N/A	Quarterly groundwater monitoring since April-2010.	MW01-MW14	MW02, MW05, MW06, MW07, MW10	ND - 1,500	YES	Quarterly groundwater monitoring will continue.	N/A

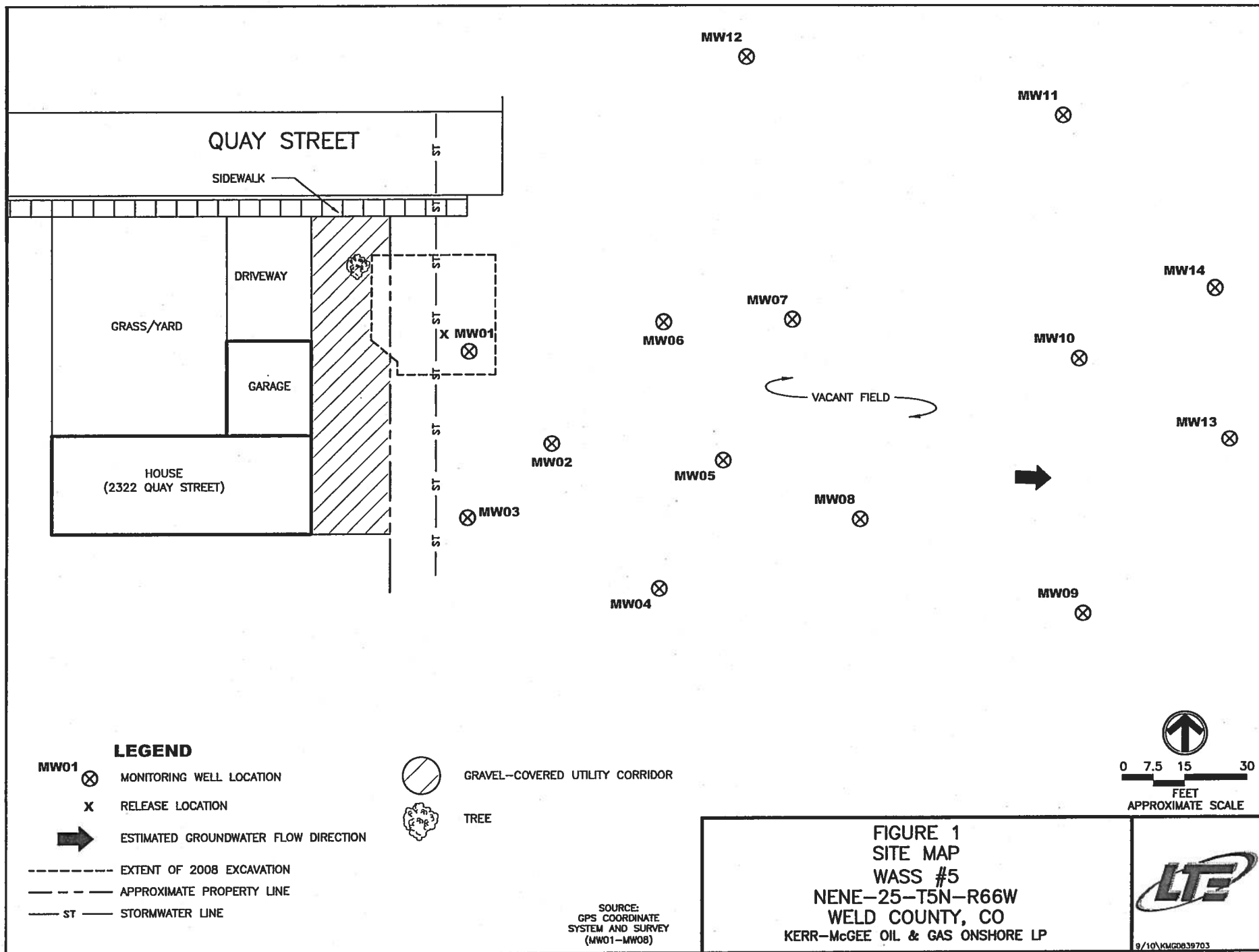


TABLE 1
GROUNDWATER ANALYTICAL AND FIELD RESULTS
WASS #5

WELD COUNTY, COLORADO
KERR-McGEE OIL & GAS ONSHORE LP

Well Name	Date	Benzene (ug/L)	Toluene (ug/L)	Ethylbenzene (ug/L)	Xylenes (ug/L)	Depth Water/ (Depth Product) (ft bgs)
MW01	04/21/2010	21	1.0	83	440	13.37
	07/02/2010	110	<1.0	<1.0	2.6	7.41
	10/08/2010	180	<1.0	130	110	8.69
	01/24/2011	420	<1.0	130	290	9.42
	04/25/2011	230	<1.0	190	370	9.89
	07/26/2011	75	<1.0	74	160	8.08
	10/20/2011	4.1	<1.0	3.6	3.4	7.57
MW02	04/21/2010	54	1.0	140	480	8.90
	07/02/2010	6.6	<1.0	5.6	23	7.43
	10/08/2010	11	<1.0	5.3	8.7	8.45
	01/24/2011	4.2	<1.0	9.4	<1.0	9.32
	04/25/2011	1.1	<1.0	<1.0	<1.0	9.80
	07/26/2011	8.0	<1.0	3.3	<1.0	8.06
	10/20/2011	16	<1.0	18	3.9	7.94
MW03	04/21/2010	<1.0	<1.0	<1.0	4.0	14.16
	07/02/2010	<1.0	<1.0	<1.0	<1.0	7.38
	10/08/2010	<1.0	<1.0	<1.0	<1.0	8.17
	01/24/2011	<1.0	<1.0	<1.0	<1.0	9.39
	04/25/2011	<1.0	<1.0	<1.0	<1.0	10.00
	07/26/2011	<1.0	<1.0	<1.0	<1.0	7.93
	10/20/2011	<1.0	<1.0	<1.0	<1.0	7.75
MW04	06/15/2010	<1.0	<1.0	<1.0	<1.0	NM
	07/02/2010	<1.0	<1.0	<1.0	<1.0	7.79
	10/08/2010	<1.0	<1.0	<1.0	<1.0	8.77
	01/24/2011	<1.0	<1.0	<1.0	<1.0	9.47
	04/25/2011	<1.0	<1.0	<1.0	<1.0	10.04
	07/26/2011	<1.0	<1.0	<1.0	<1.0	8.58
	10/20/2011	<1.0	<1.0	<1.0	<1.0	8.54
MW05	06/15/2010	110	<1.0	10	29	NM
	07/02/2010	11	<1.0	1.6	3.6	8.28
	10/08/2010	47	<1.0	3.4	9.2	9.19
	01/24/2011	1800	<1.0	61	98	9.79
	04/25/2011	19	<1.0	1.1	2.7	10.29
	07/26/2011	230	<1.0	18	60	8.93
	10/20/2011	81	<1.0	5.3	7.6	9.13



TABLE 1 (Continued)
GROUNDWATER ANALYTICAL AND FIELD RESULTS
WASS #5
WELD COUNTY, COLORADO
KERR-McGEE OIL & GAS ONSHORE LP

Well Name	Date	Benzene (ug/L)	Toluene (ug/L)	Ethylbenzene (ug/L)	Xylenes (ug/L)	Depth Water/ (Depth Product) (ft bgs)
MW06	07/02/2010	2500	<1.0	250	670	8.38
	10/08/2010	3600	<1.0	300	1800	9.52
	01/24/2011	1600	<1.0	140	630	10.00
	04/25/2011	6.3	<1.0	1.5	6.6	10.32
	07/26/2011	1100	<1.0	69	250	8.93
	10/20/2011	1500	<1.0	51	3.3	9.01
MW07	07/02/2010	2900	<1.0	17	560	8.80
	10/08/2010	1800	<1.0	120	130	9.81
	01/24/2011	830	<1.0	120	78	10.17
	04/25/2011	240	<1.0	110	24	10.54
	07/26/2011	120	<1.0	120	4.8	9.35
	10/20/2011	110	<1.0	89	<1.0	9.62
MW08	07/02/2010	950	<1.0	240	700	8.22
	10/08/2010	290	<1.0	130	100	9.32
	01/24/2011	50	<1.0	56	<1.0	9.73
	04/25/2011	2.2	<1.0	8.0	<1.0	10.14
	07/26/2011	9.8	<1.0	62	<1.0	9.00
	10/20/2011	1.1	<1.0	3.9	<1.0	9.40
MW09	08/23/2010	<1.0	<1.0	<1.0	<1.0	8.96
	10/08/2010	<1.0	<1.0	<1.0	<1.0	9.67
	01/24/2011	<1.0	<1.0	<1.0	<1.0	9.87
	04/25/2011	<1.0	<1.0	<1.0	<1.0	10.19
	07/26/2011	<1.0	<1.0	<1.0	<1.0	9.25
	10/20/2011	<1.0	<1.0	<1.0	<1.0	9.75
MW10	08/23/2010	2.5	<1.0	3.2	12	9.59
	10/08/2010	110	<1.0	18	130	10.20
	01/24/2011	69	<1.0	6.8	43	10.39
	04/25/2011	28	<1.0	2.1	13	10.57
	07/26/2011	140	<1.0	66	260	9.64
	10/20/2011	31	<1.0	37	170	10.02
MW11	08/23/2010	<1.0	<1.0	<1.0	<1.0	9.86
	10/08/2010	<1.0	<1.0	<1.0	<1.0	10.45
	01/24/2011	11	<1.0	<1.0	<1.0	10.56
	04/25/2011	6.9	<1.0	<1.0	<1.0	10.72
	07/26/2011	<1.0	<1.0	<1.0	<1.0	9.83
	10/20/2011	<1.0	<1.0	<1.0	<1.0	10.12



TABLE 1 (Continued)
GROUNDWATER ANALYTICAL AND FIELD RESULTS
WASS #5
WELD COUNTY, COLORADO
KERR-McGEE OIL & GAS ONSHORE LP

Well Name	Date	Benzene (ug/L)	Toluene (ug/L)	Ethylbenzene (ug/L)	Xylenes (ug/L)	Depth Water/ (Depth Product) (ft bgs)
MW12	08/23/2010	<1.0	<1.0	<1.0	<1.0	13.78
	10/08/2010	<1.0	<1.0	<1.0	<1.0	10.34
	01/24/2011	<1.0	<1.0	<1.0	<1.0	10.88
	04/25/2011	<1.0	<1.0	<1.0	<1.0	11.13
	07/26/2011	<1.0	<1.0	<1.0	<1.0	9.76
	10/20/2011	<1.0	<1.0	<1.0	<1.0	9.72
MW13	11/09/2010	49	<1.0	160	370	10.43
	01/24/2011	2.2	<1.0	19	9.9	10.63
	04/25/2011	<1.0	<1.0	10	<1.0	10.78
	07/26/2011	<1.0	<1.0	19	<1.0	9.94
	10/20/2011	<1.0	<1.0	7.1	<1.0	10.39
MW14	11/09/2010	<1.0	<1.0	<1.0	<1.0	11.12
	01/24/2011	<1.0	<1.0	<1.0	<1.0	10.79
	04/25/2011	<1.0	<1.0	<1.0	<1.0	10.87
	07/26/2011	<1.0	<1.0	<1.0	<1.0	10.08
	10/20/2011	<1.0	<1.0	<1.0	<1.0	10.43
Colo GW Quality Standards		5	1000	700	1400	

Notes: NM - Not Measured
ug/L - micrograms per Liter
NA - Not Analyzed/Not Available

GW - Groundwater ft bgs - feet below ground surface
< - less than laboratory reporting limit
Bold numbers indicate result equaled or exceeded standard.

