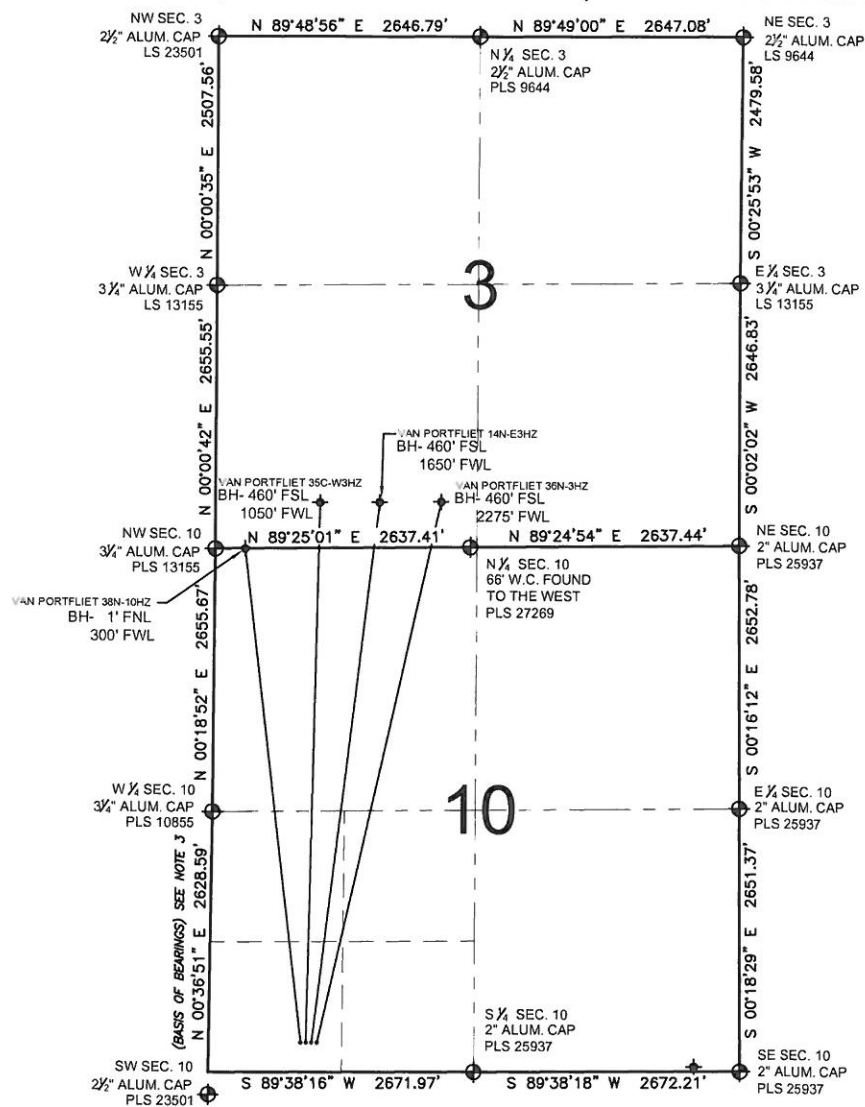


PAD DRAWING: VAN PORTFLIET 4 PAD

SECTION 10, TOWNSHIP 2 NORTH, RANGE 65 WEST, 6TH P.M.



LEGEND

- = EXISTING MONUMENT
 = BOTTOM HOLE
 BH= BOTTOM HOLE
 = PROPOSED WELL
 = EXISTING WELL

NOTES:

- THIS FIELD SURVEY CONFORMS TO THE MINIMUM STANDARDS SET BY THE C.O.G.C.C., RULE NO. 215
- HORIZONTAL POSITIONS AND ORTHOMETRIC ELEVATIONS SHOWN AT THE WELL HEAD, ARE BASED ON GPS-RTK POSITIONS DERIVED FROM MINIMUM 2-HOUR STATIC OBSERVATIONS CORRECTED BY THE NATIONAL GEODETIC SURVEY ONLINE POSITIONING USER SERVICE, O.P.U.S.
DATUM: HORIZONTAL = NAD83/2007, VERTICAL = NAVD88
- THE BASIS OF BEARINGS ARE STATE PLANE COORDINATE SYSTEM GRID BEARINGS SHOWN HEREON BETWEEN THE DESCRIBED THE MONUMENTS SHOWN HEREON.
- GRID DISTANCES ARE SHOWN, AS MEASURED IN THE FIELD, WITH TIES TO WELLS MEASURED PERPENDICULAR TO SECTION LINES.

NOTES:

- VAN PORTFLIET 38N-10HZ TO BE AT 300' FSL, 1000' FWL.
 BOTTOM HOLE AT 1' FNL & 300' FWL.
 VAN PORTFLIET 35C-W3HZ TO BE AT 300' FSL, 1030' FWL.
 BOTTOM HOLE AT 460' FSL & 1050' FWL.
 VAN PORTFLIET 14N-E3HZ TO BE AT 300' FSL, 1060' FWL.
 BOTTOM HOLE AT 460' FSL & 1650' FWL.
 VAN PORTFLIET 36N-3HZ TO BE AT 300' FSL, 1090' FWL.
 BOTTOM HOLE AT 460' FSL & 2275' FWL.

PREPARED BY:



KERR-MCGEE OIL & GAS ONSHORE LP

FIELD DATE:
11-29-11

DRAWING DATE:
05-24-12

BY:
KAG

PAD NAME:
VAN PORTFLIET 4 PAD

SURFACE LOCATION:
WELD COUNTY, COLORADO
SW 1/4 SW 1/4, SEC. 10, T2N, R65W, 6TH P.M.

