
CHEVRON - MID-CONTINENT EBIZ

Wilson Creek 57
WILLOW CREEK
Rio Blanco County , Colorado

Squeeze Perfs
10-May-2012

Job Site Documents

The Road to Excellence Starts with Safety

Sold To #: 338668	Ship To #: 338668	Quote #:	Sales Order #: 9505155
Customer: CHEVRON - MID-CONTINENT EBIZ		Customer Rep: Coward, Kevin	
Well Name: Wilson Creek	Well #: 57	API/UWI #: 05-103-0585500	
Field: WILLOW CREEK	City (SAP): HOUSTON	County/Parish: Rio Blanco	State: Colorado
Contractor: WORKOVER		Rig/Platform Name/Num: workover	
Job Purpose: Squeeze Perfs			
Well Type: Producing Well		Job Type: Squeeze Perfs	
Sales Person: SPENCER, WESTON		Srvc Supervisor: MCKEE, RALPH	MBU ID Emp #: 259268

Job Personnel

HES Emp Name	Exp Hrs	Emp #	HES Emp Name	Exp Hrs	Emp #	HES Emp Name	Exp Hrs	Emp #
FUCHS, ANDREW Peter	6.0	489821	B. THOMAS	6.0	123456	LAWTON, CURTIS Keith	6.0	492181
MCKEE, RALPH R	6.0	259268	SMITH, KC Hyrum	6.0	462378			

Equipment

HES Unit #	Distance-1 way	HES Unit #	Distance-1 way	HES Unit #	Distance-1 way	HES Unit #	Distance-1 way
10574660C	90 mile	10897817	90 mile	11127544	90 mile	11259879	90 mile
11307428	90 mile						

Job Hours

Date	On Location Hours	Operating Hours	Date	On Location Hours	Operating Hours	Date	On Location Hours	Operating Hours
5-10-2012	6	2						

TOTAL Total is the sum of each column separately

Job

Job Times

Formation Name	Formation Depth (MD)	Top	Bottom	Called Out	Date	Time	Time Zone
Form Type			BHST	On Location	10 - May - 2012	08:00	MST
Job depth MD	5250. ft		Job Depth TVD	Job Started	10 - May - 2012	10:14	MST
Water Depth			Wk Ht Above Floor	Job Completed	09 - May - 2012	12:14	MST
Perforation Depth (MD)	From 515400 ft	To 5,206.00 ft	Departed Loc	10 - May - 2012	14:00		MST

Well Data

Description	New / Used	Max pressure psig	Size in	ID in	Weight lbm/ft	Thread	Grade	Top MD ft	Bottom MD ft	Top TVD ft	Bottom TVD ft
Perforation Interval								5200.	5233.		
Bridge Plug	Unknown		5.5	5.012	14.		J-55	5250.	5254.		
Production Casing	Unknown		5.5	5.012	14.		J-55		6704.		
Retainer	Unknown		5.5	5.012	14.		J-55	5140.	5144.		
Surface Casing	Used		8.625	8.097	24.	8 RD	J-55		500.		
Tubing	Unknown		2.875	2.441	6.4		J-55		5140.		

Tools and Accessories

Type	Size	Qty	Make	Depth	Type	Size	Qty	Make	Depth	Type	Size	Qty	Make
Guide Shoe					Packer					Top Plug			
Float Shoe					Bridge Plug					Bottom Plug			
Float Collar					Retainer					SSR plug set			
Insert Float										Plug Container			
Stage Tool										Centralizers			

Miscellaneous Materials

Gelling Agt	Conc	Surfactant	Conc	Acid Type	Qty	Conc	%
Treatment Fld	Conc	Inhibitor	Conc	Sand Type	Size	Qty	

Fluid Data									
Stage/Plug #: 1									
Fluid #	Stage Type	Fluid Name	Qty	Qty uom	Mixing Density lbm/gal	Yield ft ³ /sk	Mix Fluid Gal/sk	Rate bbl/min	Total Mix Fluid Gal/sk
1	Establish Injection Rate		15.00	bbl	8.33	.0	.0	2.0	
2	Calcium Chloride Spacer		10.00	bbl	8.33	.0	.0	2.0	
42 gal/bbl		FRESH WATER							
38.92 lbm/bbl		CALCIUM CHLORIDE, PELLET, 50 LB (101509387)							
3	Fresh Water Spacer		5.00	bbl	8.33	.0	.0	2.0	
4	Super Flush 100	SUPER FLUSH 100 - SBM (12191)	10.00	bbl	11.7	.0	.0	2.0	
5	Fresh Water Spacer		5.00	bbl	8.33	.0	.0	2.0	
6	SqueezeCem Lead	SQUEEZECEM (TM) SYSTEM (452971)	150.0	sacks	12.	2.53	14.86	2.0	14.86
14.863 Gal		FRESH WATER							
7	SqueezeCem Tail	SQUEEZECEM (TM) SYSTEM (452971)	50.0	sacks	15.8	1.15	4.97	2.0	4.97
4.968 Gal		FRESH WATER							
8	Fresh Water Displacement		25.00	bbl	8.33			2.0	
Calculated Values		Pressures		Volumes					
Displacement	29.7	Shut In: Instant	265	Lost Returns		Cement Slurry		Pad	
Top Of Cement		5 Min		Cement Returns		Actual Displacement	25	Treatment	
Frac Gradient		15 Min		Spacers	25	Load and Breakdown		Total Job	
Rates									
Circulating		Mixing		Displacement		Avg. Job			
Cement Left In Pipe	Amount	0 ft	Reason	Shoe Joint					
Frac Ring # 1 @	ID	Frac ring # 2 @	ID	Frac Ring # 3 @	ID	Frac Ring # 4 @	ID		
The Information Stated Herein Is Correct				Customer Representative Signature					

The Road to Excellence Starts with Safety

Sold To #: 338668		Ship To #: 338668		Quote #:		Sales Order #: 9505155	
Customer: CHEVRON - MID-CONTINENT EBIZ				Customer Rep: Coward, Kevin			
Well Name: Wilson Creek			Well #: 57		API/UWI #: 05-103-0585500		
Field: WILLOW CREEK		City (SAP): HOUSTON		County/Parish: Rio Blanco		State: Colorado	
Legal Description:							
Lat: N 0 deg. OR N 0 deg. 0 min. 0 secs.				Long: E 0 deg. OR E 0 deg. 0 min. 0 secs.			
Contractor: WORKOVER			Rig/Platform Name/Num: workover				
Job Purpose: Squeeze Perfs					Ticket Amount:		
Well Type: Producing Well			Job Type: Squeeze Perfs				
Sales Person: SPENCER, WESTON			Srvc Supervisor: MCKEE, RALPH			MBU ID Emp #: 259268	

Activity Description	Date/Time	Cht #	Rate bbl/ min	Volume bbl		Pressure psig		Comments
				Stage	Total	Tubing	Casing	
Call Out	05/10/2012 02:00							Crew called out for job.
Pre-Convoy Safety Meeting	05/10/2012 04:30							Met with crew to discuss the hazards of travel, convoy order, and route to destination.
Depart from Service Center or Other Site	05/10/2012 04:35							Entered into Journey Management.
Arrive at Location from Service Center	05/10/2012 08:00							Ended Journey Management.
Other	05/10/2012 08:05							Met with company man to get numbers and verify information.
Other	05/10/2012 08:06							RIG READY AND WAITING
Assessment Of Location Safety Meeting	05/10/2012 08:10							Walked around location with crew to identify material locations (water, mud, etc), potential hazards for spotting equipment, and discussed equipment placement.
Other	05/10/2012 08:20							Spot Equipment
Pre-Rig Up Safety Meeting	05/10/2012 08:30							Discuss Safety and hazards.
Rig-Up Equipment	05/10/2012 08:40							Rig iron on the ground.
Pre-Job Safety Meeting	05/10/2012 09:30							DISCUSS SAFETY CONCERNS, JOB CONTINGENCIES,& PUMPING SCHEDULE
Pump Water	05/10/2012 10:11							FILL LINES

Sold To #: 338668

Ship To #: 338668

Quote # :

Sales Order # :

9505155

Activity Description	Date/Time	Cht #	Rate bbl/min	Volume bbl		Pressure psig		Comments
				Stage	Total	Tubing	Casing	
Pressure Test	05/10/2012 10:14						3620.0	
Other	05/10/2012 10:19						3588.0	END PRESSURE TEST
Establish Rate	05/10/2012 10:20		4			1240.0		
Pump Spacer	05/10/2012 10:28		3		10	741.0		CALCIUM CHLORIDE WATER
Pump Water	05/10/2012 10:31		3		5	930.0		
Pump Spacer	05/10/2012 10:34		3		10	152.0		SUPERFLUSH
Pump Water	05/10/2012 10:46		3		5	596.0		
Pump Lead Cement	05/10/2012 10:47		3		67.5	700.0		150 SKS. SQUEEZECER @ 12.0#, 2.53 Y, 14.86 GPS.
Pump Tail Cement	05/10/2012 11:09		3		10.2	210.0		50 SKS. SQUEEZECER @15.8 #, 1.15 Y, 4.97 GPS.
Pump Displacement - Start	05/10/2012 11:14		3	15		103.0		
Shutdown	05/10/2012 11:19			15				LET WELL SUCK / SUCK 1 BBL @1 BBL./MIN
Other	05/10/2012 11:21		1		24	260.0		RESUME DISPLACEMENT
Shutdown	05/10/2012 11:27				25	265.0		WELL HAD STOPPED SUCKING /SHUT IN /WASH RCM
Other	05/10/2012 11:27							STING OUT /RIG PULLS PIPE
Reverse Circ Well	05/10/2012 11:55					70.0	50.0	2 BBL. CMT RETURNS TO SURFACE
Shutdown	05/10/2012 12:09							
End Job	05/10/2012 12:13							
Post-Job Safety Meeting (Pre Rig-Down)	05/10/2012 12:20							
Rig-Down Equipment	05/10/2012 12:35							
Safety Meeting - Departing Location	05/10/2012 13:45							
Crew Leave Location	05/10/2012 14:00							

Sold To # : 338668

Ship To # :338668

Quote # :

Sales Order # :

9505155

HALLIBURTON

Cementing Job Log

Activity Description	Date/Time	Cht #	Rate bbl/ min	Volume bbl		Pressure psig		Comments
				Stage	Total	Tubing	Casing	
Other	05/10/2012 14:00							Thanks for using Halliburton!!!

Sold To # : 338668

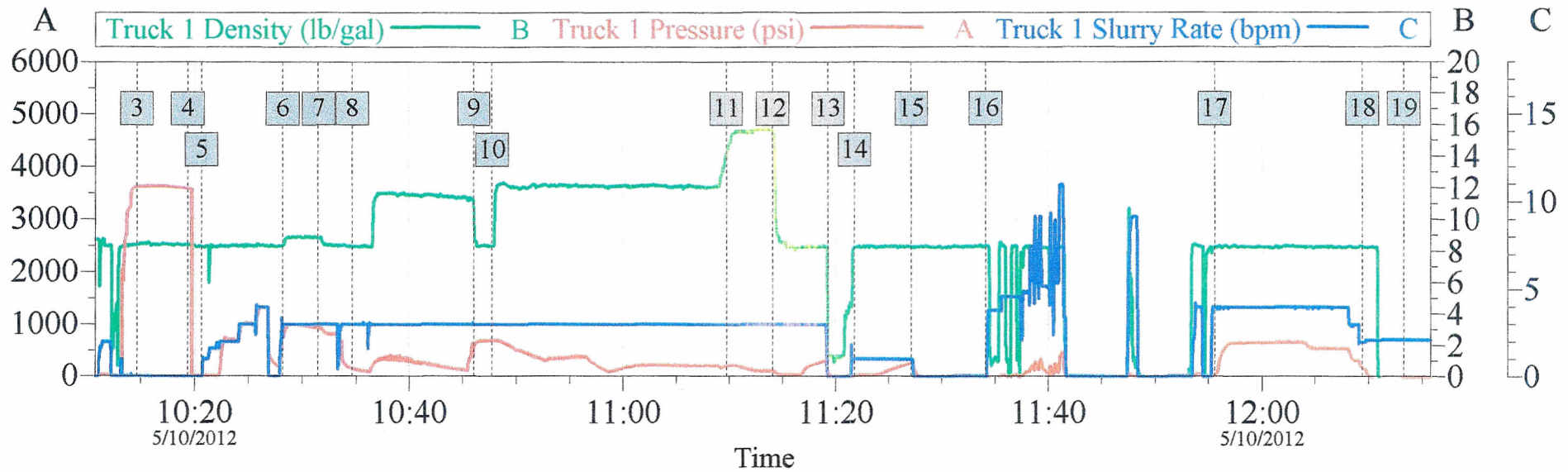
Ship To # :338668

Quote # :

Sales Order # :

9505155

CHEVRON SQUEEZE WILSON CREEK # 57 5-10-2012



Global Event Log

Intersection	TIP	Intersection	TIP
3 PRESSURE TEST	10:14:38 3620	4 END RESSURE TEST	10:19:22 3588
5 ESTABBLISH INJECTION	10:20:39 17.00	6 PUMP CC SPACER	10:28:12 741.7
7 PUMP WATER SPACER	10:31:31 930.6	8 SUPERFLUSH SPACER	10:34:39 152.1
9 PUMP WATER SPACER	10:46:02 596.7	10 Pump Lead Cement	10:47:44 700.0
11 Pump Tail Cement	11:09:45 210.0	12 Pump Displacement	11:14:04 103.0
13 SHUT DOWN / LET SUCK	11:19:18 90.65	14 RESUME DISPLACEMENT	11:21:48 14.54
15 SHUT DOWN / STING OUT	11:27:08 265.0	16 WASH RCM / PULL PIPE	11:34:06 3.000
17 Reverse Circ Well	11:55:35 50.00	18 SHUT DOWN	12:09:22 174.9
19 END JOB	12:13:16 0.000		

Customer: CHEVRON
 Well Description: W.C. # 57
 ELITE 10574660

Job Date: 10-May-2012
 UWI:
 SUPERVISOR R. MCKEE

Sales Order #: 9505155
 OPERATOR K.C. SMITH

OptiCem v6.4.10
 10-May-12 12:40

The Road to Excellence Starts with Safety

The Road to Excellence Starts With Safety			
Sold To #: 338668	Ship To #: 338668	Quote #:	Sales Order #: 9496708
Customer: CHEVRON - MID-CONTINENT EBIZ		Customer Rep: Coward, Kevin	
Well Name: Wilson Creek		Well #: 57	API/UWI #: 05-103-0585500
Field: WILLOW CREEK	City (SAP): HOUSTON	County/Parish: Rio Blanco	State: Colorado
Contractor: WORKOVER		Rig/Platform Name/Num: Workover	
Job Purpose: Squeeze Perfs			
Well Type: Producing Well		Job Type: Squeeze Perfs	
Sales Person: SPENCER, WESTON		Srvc Supervisor: CARPENTER, LANCE	MBU ID Emp #: 461737

Job Personnel

HES Emp Name	Exp Hrs	Emp #	HES Emp Name	Exp Hrs	Emp #	HES Emp Name	Exp Hrs	Emp #
CARPENTER, LANCE S	9	461737	ESTEP, KENNETH	5	121420	ESTEP, KENNETH	9	214387
GAMBLES, BRAYDEN Kade	9	469413						

Equipment

HES Unit #	Distance-1 way	HES Unit #	Distance-1 way	HES Unit #	Distance-1 way	HES Unit #	Distance-1 way

Job Hours

Date	On Location Hours	Operating Hours	Date	On Location Hours	Operating Hours	Date	On Location Hours	Operating Hours
TOTAL			Total is the sum of each column separately					

Job

Job Times

Formation Name				Date	Time	Time Zone
Formation Depth (MD)	Top	Bottom		Called Out	29 - May - 2012	03:00 MST
Form Type	BHST			On Location	29 - May - 2012	08:45 MST
Job depth MD	5916. ft	Job Depth TVD	5916. ft	Job Started	29 - May - 2012	11:00 MST
Water Depth	Wk Ht Above Floor			Job Completed	30 - May - 2012	10:00 GMT
Perforation Depth (MD)	From	5,287.00 ft	To	5,288.00 ft	Departed Loc	30 - May - 2012 11:00 MST

Well Data

Description	New / Used	Max pressure psig	Size in	ID in	Weight lbm/ft	Thread	Grade	Top MD ft	Bottom MD ft	Top TVD ft	Bottom TVD ft
Production Casing	Unknown		7.	6.366	23.		J-55		6704.		
Retrievable Casing Packer	Unknown		7.	6.366	23.		J-55	5971.	5972.		
Surface Casing	Used		8.625	8.097	24.	8 RD	J-55		500.		
2.875 Tubing	Unknown		2.875	2.441	6.4		J-55		5300.		
Perforation Interval								5287.	5288.		

Sales/Rental/3rd Party (HES)

Description	Qty	Qty uom	Depth	Supplier
SUGAR - GRANULATED	20	LB		

Tools and Accessories

Type	Size	Qty	Make	Depth	Type	Size	Qty	Make	Depth	Type	Size	Qty	Make
Guide Shoe					Packer					Top Plug			
Float Shoe					Bridge Plug					Bottom Plug			
Float Collar					Retainer					SSR plug set			
Insert Float										Plug Container			
Stage Tool										Centralizers			

HALLIBURTON

Cementing Job Summary

Miscellaneous Materials													
Gelling Agt		Conc		Surfactant		Conc		Acid Type		Qty		Conc	%
Treatment Fld		Conc		Inhibitor		Conc		Sand Type		Size		Qty	
Fluid Data													
Stage/Plug #: 1													
Fluid #	Stage Type	Fluid Name			Qty	Qty uom	Mixing Density lbm/gal	Yield ft3/sk	Mix Fluid Gal/sk	Rate bbl/min	Total Mix Fluid Gal/sk		
1	Establish Injection Rate				10.00	bbl	8.33	.0	.0	2.0			
2	SqueezeCem	SQUEEZECEM (TM) SYSTEM (452971)			80.0	sacks	12.5	.9	4.76	2.0	4.76		
4.761 Gal		FRESH WATER											
3	Fresh Water Displacement				32.00	bbl	8.33			2.0			
Calculated Values		Pressures			Volumes								
Displacement		Shut In: Instant			Lost Returns			Cement Slurry			Pad		
Top Of Cement		5 Min			Cement Returns			Actual Displacement			Treatment		
Frac Gradient		15 Min			Spacers			Load and Breakdown			Total Job		
Rates													
Circulating	2.5	Mixing		2.5	Displacement		3	Avg. Job		2.5			
Cement Left In Pipe	Amount	0 ft	Reason	Shoe Joint									
Frac Ring # 1 @	ID	Frac ring # 2 @	ID	Frac Ring # 3 @	ID	Frac Ring # 4 @	ID						
The Information Stated Herein Is Correct				Customer Representative Signature									

The Road to Excellence Starts with Safety

The Road to Excellence Starts With Safety

Sold To #: 338668	Ship To #: 338668	Quote #:	Sales Order #: 9496708
Customer: CHEVRON - MID-CONTINENT EBIZ		Customer Rep: Coward, Kevin	
Well Name: Wilson Creek		Well #: 57	API/UWI #: 05-103-0585500
Field: WILLOW CREEK	City (SAP): HOUSTON	County/Parish: Rio Blanco	State: Colorado
Legal Description:			
Lat: N 0 deg. OR N 0 deg. 0 min. 0 secs.		Long: E 0 deg. OR E 0 deg. 0 min. 0 secs.	
Contractor: WORKOVER		Rig/Platform Name/Num: Workover	
Job Purpose: Squeeze Perfs			Ticket Amount:
Well Type: Producing Well		Job Type: Squeeze Perfs	
Sales Person: SPENCER, WESTON		Srvc Supervisor: CARPENTER, LANCE	MBU ID Emp #: 461737

Activity Description	Date/Time	Cht #	Rate bbl/min	Volume bbl		Pressure psig		Comments
				Stage	Total	Tubing	Casing	
Call Out	05/29/2012 03:00							CREW CALLED OUT
Pre-Convoy Safety Meeting	05/29/2012 04:30							CREW HAS JOURNEY MANAGEMENT SAFETY MEETING
Depart from Service Center or Other Site	05/29/2012 04:40							CREW DEPARTS FOR LOCATION
Arrive At Loc	05/29/2012 08:45							CREW ARRIVES AT LOCATION
Assessment Of Location Safety Meeting	05/29/2012 08:50							CREW ASSESSES LOCATION FOR HAZARDS AND EQUIPMENT LAYOUT
Pre-Rig Up Safety Meeting	05/29/2012 08:55							CREW, RIG CREW AND COMPANY REP HAVE PRE RIG UP SAFETY MEETING
Rig-Up Equipment	05/29/2012 09:00							CREW BEGINS RIGGING UP EQUIPMENT
Rig-Up Completed	05/29/2012 10:45							CREW IS RIGGED UP AND READY TO BEGIN
Circulate Well	05/29/2012 11:18		3	10	10	500.0		PUMP WATER AHEAD WHILE ESTABLISHING CIRCULATION
Test Lines	05/29/2012 11:28							PRESSURE TEST LINES TO 3500 PSI
Comment	05/29/2012 11:30							HAD A VERY DIFFICULT TIME GETTING CEMENT TO COME OUT OF THE BULK TRUCK. ONLY HAD 50 SKS ON LOCATION.

Sold To #: 338668

Ship To #: 338668

Quote #:

Sales Order #:

9496708

Activity Description	Date/Time	Cht #	Rate bbl/min	Volume bbl		Pressure psig		Comments
				Stage	Total	Tubing	Casing	
Pump Cement	05/29/2012 12:15		2.5	8	18	300.0		PUMP 50 SKS FINECEM 12.5# 0.9 YIELD 4.76 GAL
Pump Displacement	05/29/2012 12:18		3	32.1	50	350.0		PUMP DISPLACEMENT
Shutdown	05/29/2012 12:28							SHUTDOWN. RIG CREW PULLS UP TO 5216'
Reverse Circ Well	05/29/2012 12:58		4	45			550.0	REVERSE CIRCULATE WELL. SEEN ABOUT A HALF BARREL OF DIRTY WATER
Shutdown	05/29/2012 13:09							SHUTDOWN
Pressure Up Well	05/29/2012 13:11			1.75		500.0		TRY TO SQUEEZE ON WELL BUT PRESSURE BLEED OFF DUE TO OPEN HOLES ABOVE.
Post-Job Safety Meeting (Pre Rig-Down)	05/29/2012 14:00							CREW HAS POST JOB SAFETY MEETING. DISCUSS WITH COMPANY REP PLANS FOR TOMORROW
Pre-Convoy Safety Meeting	05/29/2012 14:20							CREW HAS JOURNEY MANAGEMENT SAFETY MEETING
Depart Location for Service Center or Other Site	05/29/2012 14:30							CREW DEPARTS FROM LOCATION
Call Out	05/30/2012 03:30							CREW CALLED OUT
Pre-Convoy Safety Meeting	05/30/2012 04:15							CREW HAS JOURNEY MANAGEMENT SAFETY MEETING
Depart from Service Center or Other Site	05/30/2012 04:25							CREW DEPARTS FOR LOCATION
Arrive At Loc	05/30/2012 07:00							CREW ARRIVES AT LOCATION
Assessment Of Location Safety Meeting	05/30/2012 07:10							CREW ASSESSES LOCATION FOR HAZARDS
Pre-Job Safety Meeting	05/30/2012 07:20							CREW, RIG CREW AND COMPANY REP HAVE PRE JOB SAFETY MEETING
Pressure Up Well	05/30/2012 07:38		2			500.0		PRESSURE UP WELL TO TEST BLEED OFF RATE

Sold To # : 338668

Ship To # : 338668

Quote # :

Sales Order # :

9496708

Activity Description	Date/Time	Cht #	Rate bbl/min	Volume bbl		Pressure psig		Comments
				Stage	Total	Tubing	Casing	
Pump Water	05/30/2012 08:51		2.5	10	10	250.0		PUMP WATER AHEAD
Pump Cement	05/30/2012 08:55		2.5	4	14	200.0		PUMP 30 SKS FINECEM 12.5# 0.9 YIELD 4.76 GAL
Pump Water	05/30/2012 08:57		2.5	29.1	43	150.0		PUMP WATER DISPLACEMENT
Shutdown	05/30/2012 09:07							SHUTDOWN. RIG CREW PULLS UP TO 4900 '
Reverse Circ Well	05/30/2012 09:26		3.5	40				REVERSE CIRCULATE WELL
Shutdown	05/30/2012 09:39							SHUTDOWN
Pressure Up Well	05/30/2012 09:43			1		550.0		PRESSURE UP WELL. LOST ABOUT 40 PSI IN 25 MINUTES
Shut In Well	05/30/2012 10:05							SHUT IN WELL
Post-Job Safety Meeting (Pre Rig-Down)	05/30/2012 10:15							CREW HAS PRE RIG DOWN SAFETY MEETING
Rig-Down Equipment	05/30/2012 10:20							CREW BEGINS RIGGING DOWN
Rig-Down Completed	05/30/2012 10:40							CREW IS RIGGED DOWN
Pre-Convoy Safety Meeting	05/30/2012 10:50							CREW HAS JOURNEY MANAGEMENT SAFETY MEETING
Depart Location for Service Center or Other Site	05/30/2012 11:00							CREW DEPARTS FROM LOCATION

Sold To # : 338668

Ship To # : 338668

Quote # :

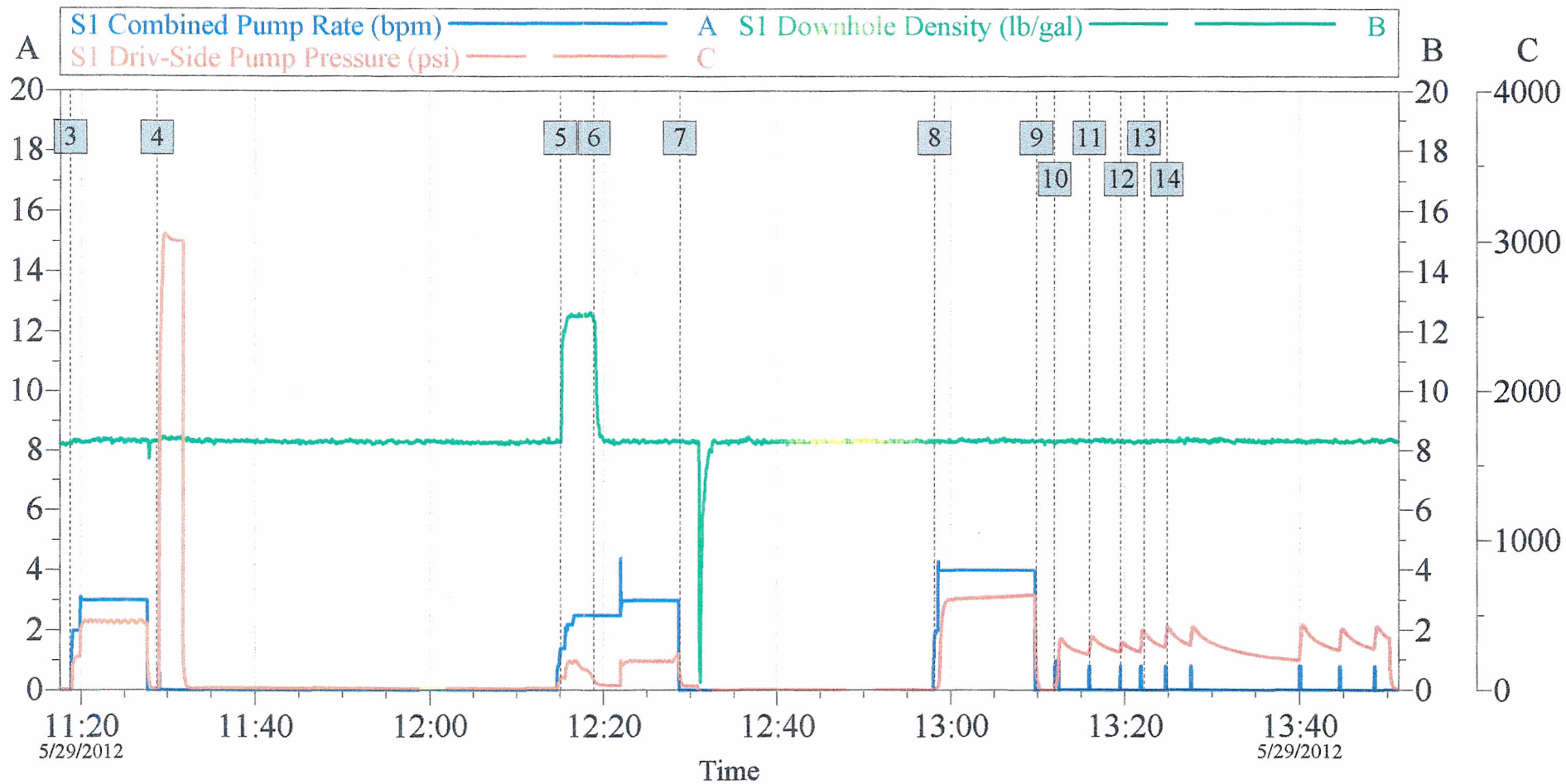
Sales Order # :

9496708

QUANTITY: 7.0000

UNIT PRICE: \$11.0000 \$77.0000

CHEVRON SQUEEZE DAY 1
WILSON CREEK 57
HOLES 5814' - 5909'



Global Event Log

3	Circulate Well	11:18:45	4	Pressure Test	11:28:46	5	Pump Cement	12:15:03
6	Pump Displacement	12:18:55	7	Shutdown	12:28:49	8	Reverse Circ Well	12:58:07
9	Shutdown	13:09:54	10	Pressure Up Well	13:11:58	11	Pressure Up Well	13:15:58
12	Pressure Up Well	13:19:33	13	Pressure Up Well	13:22:12	14	Pressure Up Well	13:24:50

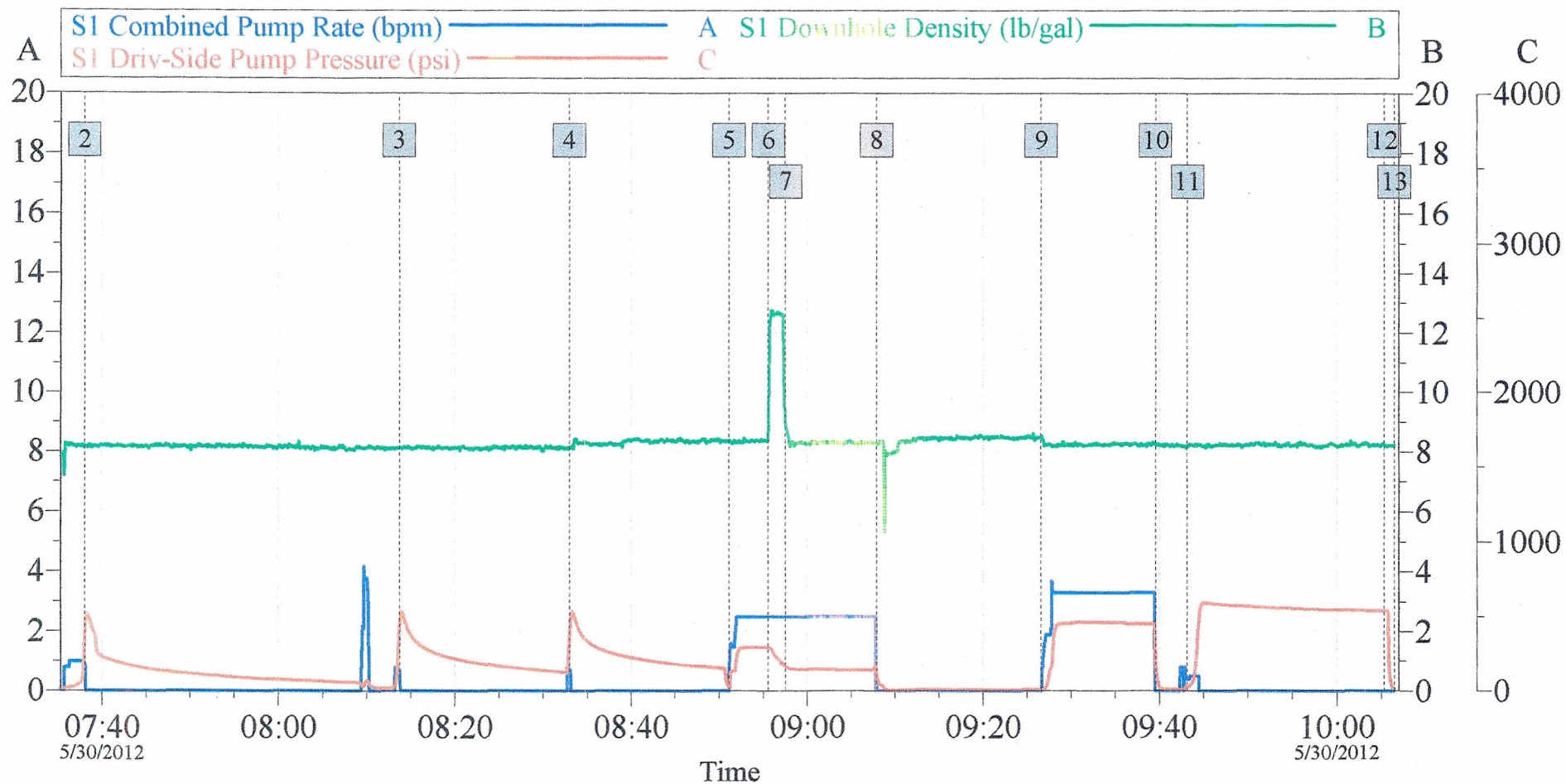
Customer: CHEVRON
Well Description: WILSON CREEK 57

Job Date: 29-May-2012
DAY 1

Sales Order #: 9496708

OptiCem v6.4.9
30-May-12 10:25

CHEVRON SQUEEZE DAY 2
WILSON CREEK 57
HOLES 5195' - 5206'



Global Event Log

2	Test Bleed Off on Formation	07:38:02	3	Test Bleed Off on Formation	08:13:44	4	Test Bleed Off on Formation	08:32:59
5	Pump Water	08:51:07	6	Pump Cement	08:55:35	7	Pump Water	08:57:32
8	Shutdown	09:07:56	9	Reverse Circ Well	09:26:38	10	Shutdown	09:39:34
11	Pressure Up Well	09:43:11	12	Shut In Well	10:05:18	13	Ending Job	10:06:27

Customer: CHEVRON
Well Description: WILSON CREEK 57

Job Date: 30-May-2012
DAY # 2

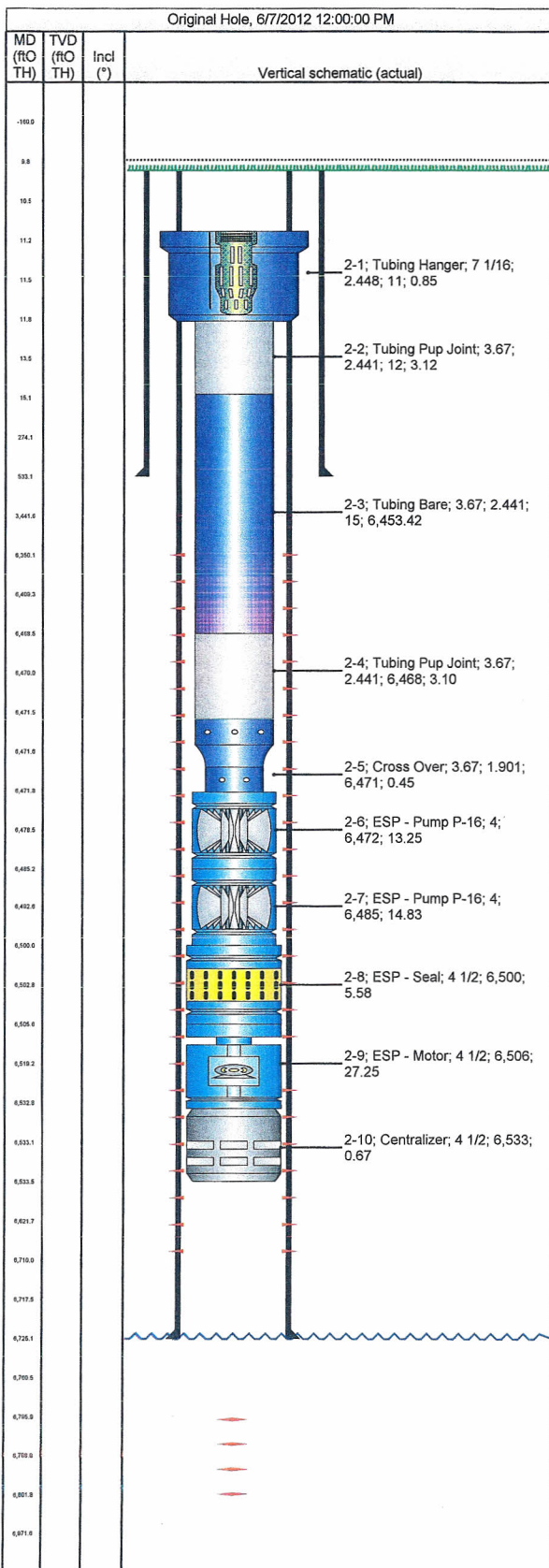
Sales Order #: 9496708

OptiCem v6.4.9
30-May-12 10:17



Tubing Summary

Well Name Wilson Creek Unit 57 DHC	Lease Wilson Creek Unit	Field Name Wilson Creek	Business Unit Mid-Continent/Alaska
Ground Elevation (ft) 6,715.00	Original RKB Elevation (ft) 6,725.00	Current RKB Elevation 6,725.00, <elvdttmstart>	Mud Line Elevation (ft) Water Depth (ft)
Current KB to Ground (ft) 10.00	Current KB to Mud Line (ft)	Current KB to Csg Flange (ft)	Current KB to Tubing Head (ft)



Tubing Strings									
Tubing Description Tubing - Production		Planned Run? N		Set Depth (ftOTH) 6,533.5		Set Depth (TVD) (ftOTH)			
Run Date 6/7/2012		Run Job Casing Repair, 5/2/2012 13:00		Pull Date		Pull Job			
Jts	Item Des	OD (in)	ID (in)	Wt (lb/ft)	Grade	Top Thread	Len (ft)	Top (ftOTH)	Btm (ftOTH)
	Tubing Hanger	7 1/16	2.448	6.50			0.85	11.0	11.8
	Tubing Pup Joint	3.668	2.441	6.50	J-55		3.12	11.8	15.0
208	Tubing Bare	3.668	2.441	6.50	J-55		6,453.42	15.0	6,468.4
	Tubing Pup Joint	3.668	2.441	6.50	J-55		3.10	6,468.4	6,471.5
	Cross Over	3.668	1.901				0.45	6,471.5	6,471.9
	ESP - Pump P-16	4					13.25	6,471.9	6,485.2
	ESP - Pump P-16	4					14.83	6,485.2	6,500.0
	ESP - Seal	4 1/2					5.58	6,500.0	6,505.6
	ESP - Motor	4 1/2					27.25	6,505.6	6,532.9
	Centralizer	4 1/2					0.67	6,532.9	6,533.5
	EOT							6,533.5	6,533.5

Rod Strings			
Rod Description	Planned Run?	Set Depth (ftOTH)	Set Depth (TVD) (ftOTH)
Run Date	Run Job	Pull Date	Pull Job

Rod Components							
Jts	Item Des	OD (in)	Grade	Model	Len (ft)	Top (ftOTH)	Btm (ftOTH)

EWLF
6/12/12
DLP