



BOND CEMENT AND - OR SONIC SEISMOGRAM LOG

GAMMA RAY

FILING NO.

IBC-GR-SS-66077

COMPANY CHEVRON OIL COMPANY

WELL S.W. McLAUGHLIN #7-X

FIELD RANGELY

COUNTY RIO BLANCO

STATE COLORADO

LOCATION:

2560' FSL & 1252' FWL

OTHER SERVICES:

SEC. 33 TWP. 2N RGE. 102W

PERMANENT DATUM G.L. ELEV. 5215'

ELEVATIONS:

K.B. 5227'

LOG MEASURED FROM K.B.

D.F. 5215'

DRILLING MEASURED FROM K.B.

DATE 8-20-72

RUN NO. ONE

TYPE LOG BOND CEMENT-GR-SONIC SEISMOGRAM

DEPTH-DRILLER 6227'

DEPTH-LOGGER 6225'

BOTTOM LOGGED INTERVAL 6220' - 3850'

TOP LOGGED INTERVAL 5400' - 2700'

TYPE FLUID IN HOLE OIL

SALINITY PPM CL.

DENSITY LB./GAL.

LEVEL 480'

MAX. REC. TEMP. DEG. F.

OPR. RIG TIME

RECORDED BY ROBISON

WITNESSED BY MR. CROCKETT

RUN

BORE HOLE RECORD

CASING RECORD

NO.

BIT

FROM

TO

SIZE 7"

WGT. 23#

FROM -0-

TO T.D.

SCANNED INTO EML

FOLD HERE

THIS HEADING AND LOG CONFORMS TO API RECOMMENDED STANDARD PRACTICE RP-33 (P)

LOGGING AND EQUIPMENT DATA (BOND CEMENT LOG)

DATE RECORDED	8-20-72	TOOL MODEL NO.	GBCS-3.5-G
TIME STARTED	4:00 PM	DIAMETER	3.5"
TIME FINISHED	8:00 PM	LENGTH	17' (4' SPACING)
LOGGED INTERVAL	6220' - 5400', 3850' - 2700'		
LOGGED CEMENT TOP			

CEMENTING DATA

	1	2	SQUEEZE NO. 1	SQUEEZE NO. 2	SQUEEZE NO. 3
DATE AND HOUR SET					
SETTING TIME (HRS)					
TYPE CEMENT					
PACKS USED					
PRECEDING FLUID					
% ADDITIVE					
% RETARDER					
SLURRY WT.					
BREAKDOWN PRESS.					
SURFACE MAX. PRESS.					
BOTTOM MAX. PRESS.					

GAMMA RAY

NEUTRON

RUN NO.	ONE	RUN NO.	
TOOL MODEL NO.	GBCS-3.5-G	LOG TYPE	
DIAM.	3.5"	TOOL MODEL NO.	
DETECT. MODEL NO.	132	DIAM.	
TYPE	SCINT	DETECT. MODEL NO.	
LENGTH	3"	TYPE	
DIST. TO N. SOURCE		LENGTH	
		SOURCE MODEL NO.	
		SERIAL NO.	
		SPACING	
		TYPE	
		STRENGTH	

GENERAL

HOIST TRUCK NO.	1931
INST. TRUCK NO.	1931
TOOL SERIAL NO.	
LOG TICKET NO.	16959

LOGGING DATA

GENERAL			GAMMA RAY				NEUTRON			
RUN NO.	DEPTHS		SPEED FT./MIN.	T.C. SEC.	SENS. SETTINGS	ZERO DIV. L OR R.	API G.R. UNITS PER LOG DIV.	T.C. SEC.	SENS. SETTINGS	ZERO DIV. L OR R.
	FROM	TO								
1	6215'	5400'	35	3.6	G-320 D-400	3L	14			
	AND				R-6A					
	3850'	2700'								

REMARKS:

DATE RECORDED	8-20-72	TOOL MODEL NO.	GBCS-3.5-G
TIME STARTED	4:00 PM	DIAMETER	3.5"
TIME FINISHED	8:00 PM	LENGTH	17' (4' SPACING)
LOGGED INTERVAL	6220'-5400', 3850"-2700'		
LOGGED CEMENT TOP			

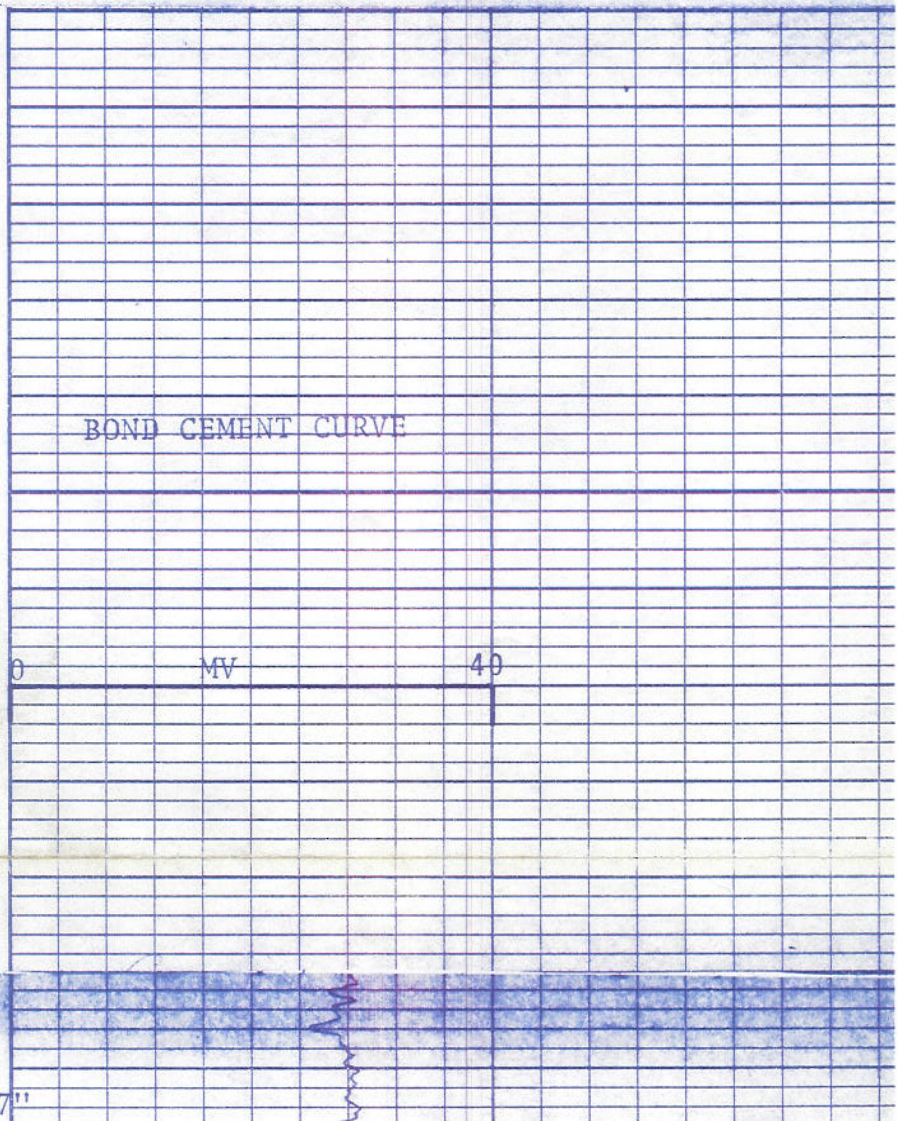
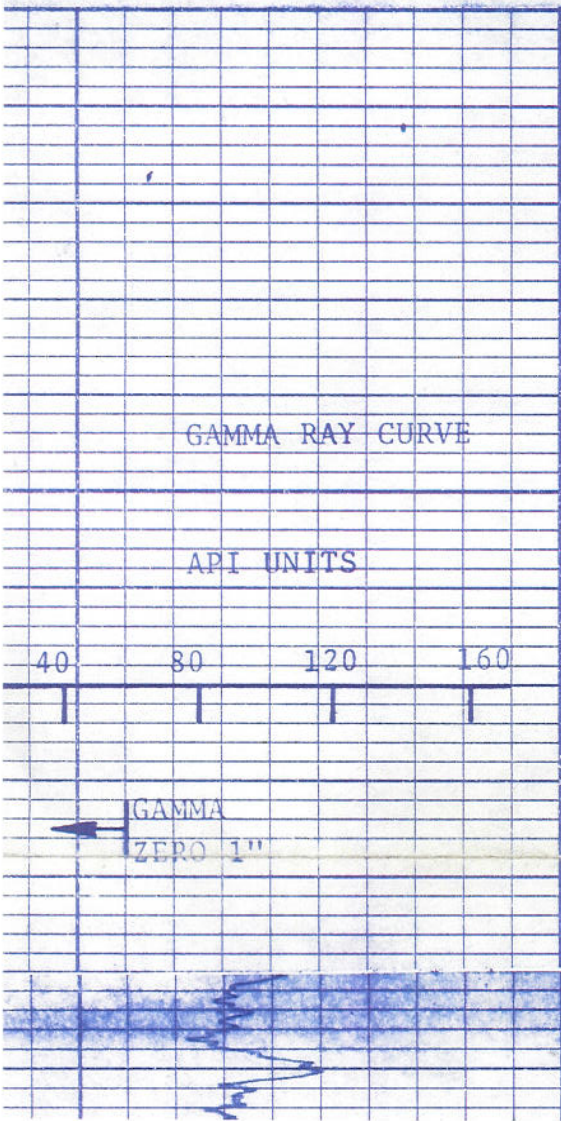
CEMENTING DATA					
	1	2	SQUEEZE NO. 1	SQUEEZE NO. 2	SQUEEZE NO. 3
DATE AND HOUR SET					
SETTING TIME (HRS)					
TYPE CEMENT					
JACKS USED					
PRECEDING FLUID					
% ADDITIVE					
% RETARDER					
SLURRY WT.					
BREAKDOWN PRESS.					
SURFACE MAX. PRESS.					
BOTTOM MAX. PRESS.					

GAMMA RAY				NEUTRON			
RUN NO.	ONE			RUN NO.			
TOOL MODEL NO.	GBCS-3.5-G			LOG TYPE			
DIAM.	3.5"			TOOL MODEL NO.			
DETECT. MODEL NO.	132			DIAM.			
TYPE	SCINT			DETECT. MODEL NO.			
LENGTH	3"			TYPE			
DIST. TO N. SOURCE				LENGTH			
				SOURCE MODEL NO.			

GENERAL							
HOIST TRUCK NO.	1931			SERIAL NO.			
INST. TRUCK NO.	1931			SPACING			
TOOL SERIAL NO.				TYPE			
LOG TICKET NO.	16959			STRENGTH			

LOGGING DATA											
GENERAL			GAMMA RAY					NEUTRON			
RUN NO.	DEPTHS		SPEED	T.C.	SENS.	ZERO	API G.R. UNITS	T.C.	SENS.	ZERO	API
	FROM	TO	FT./MIN.	SEC.	SETTINGS	DIV. L. OR R.	PER LOG DIV.	SEC.	SETTINGS	DIV. L. OR R.	PI
1	6215'	5400'	35	3.6	G-320 D-400	3L	14				
	AND				R-6A						
	3850'	2700'									

REMARKS:



2700

7"

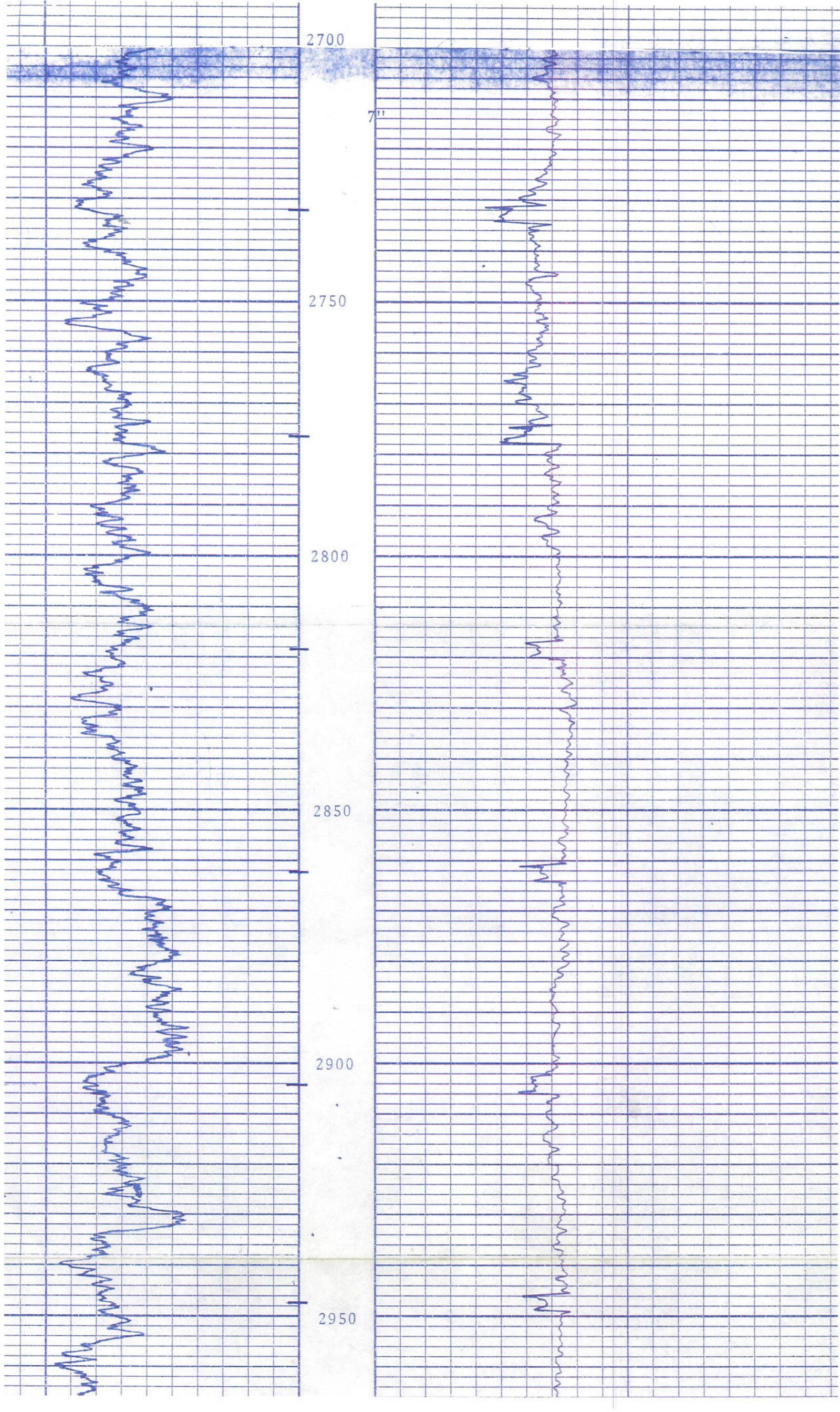
2750

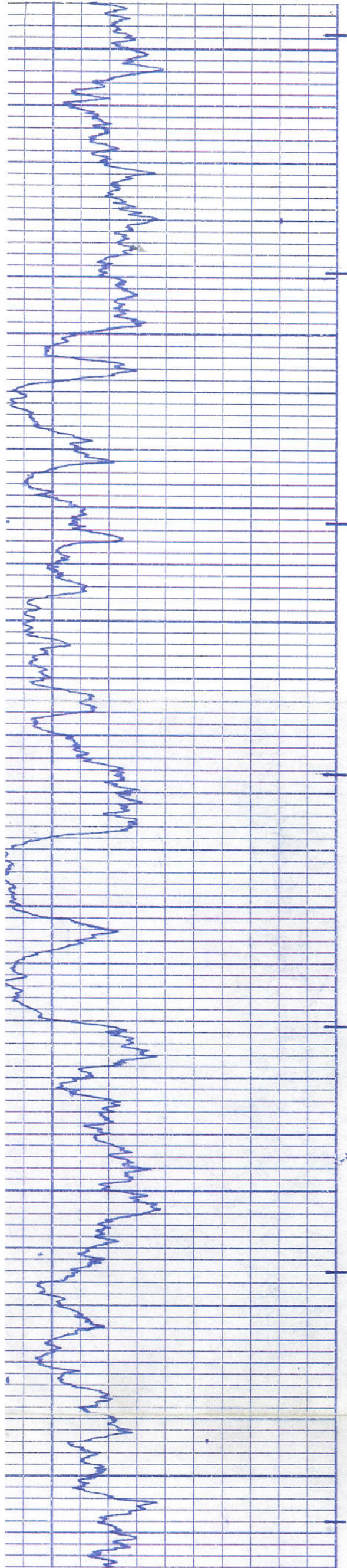
2800

2850

2900

2950





2950

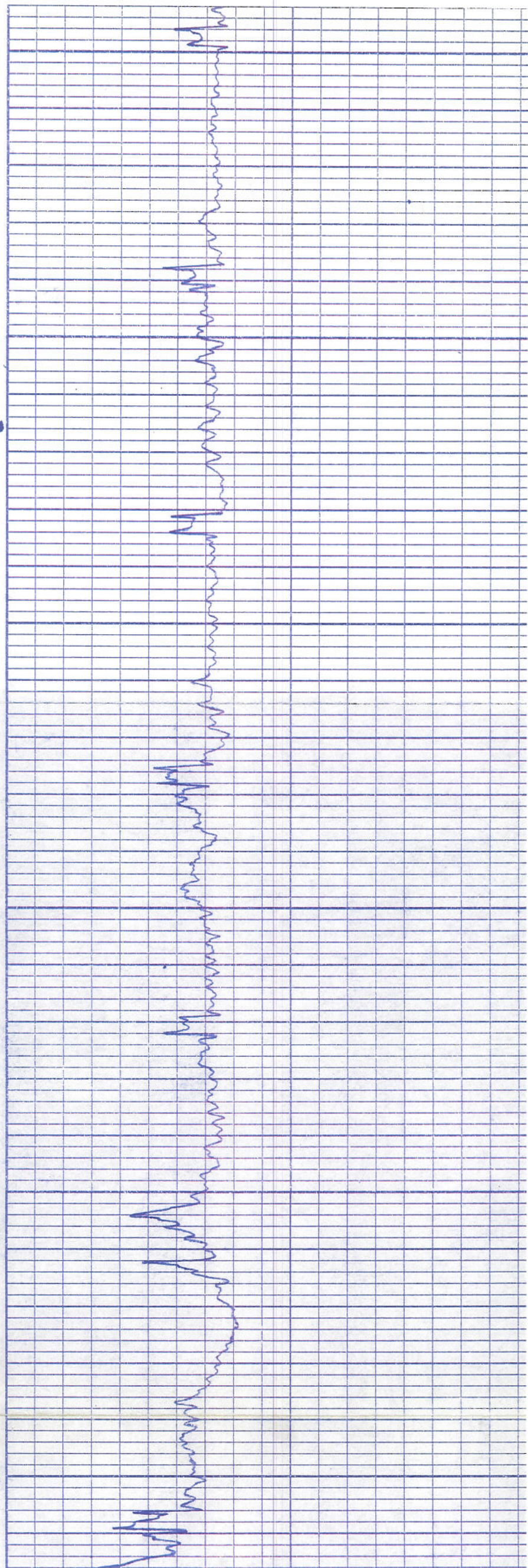
3000

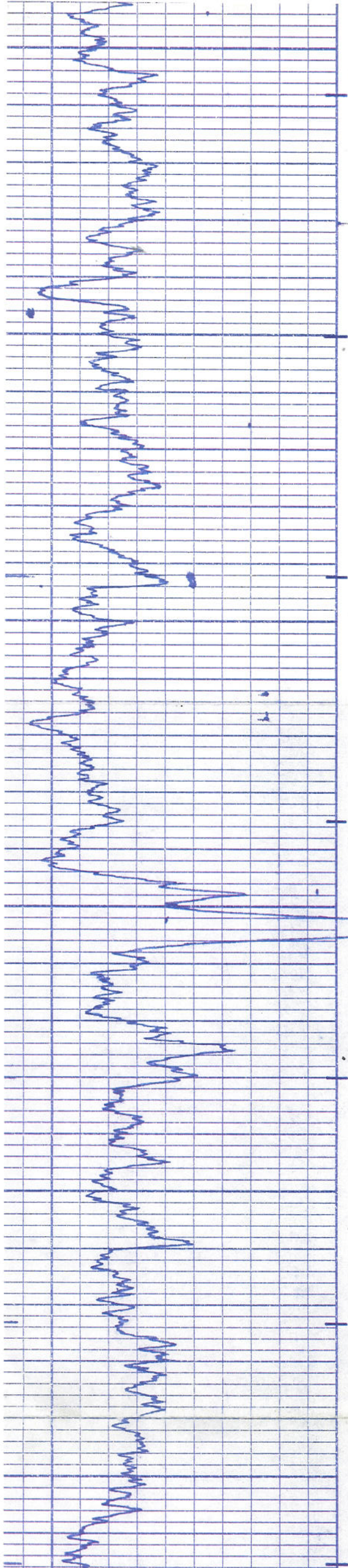
3050

3100

3150

3200





3200

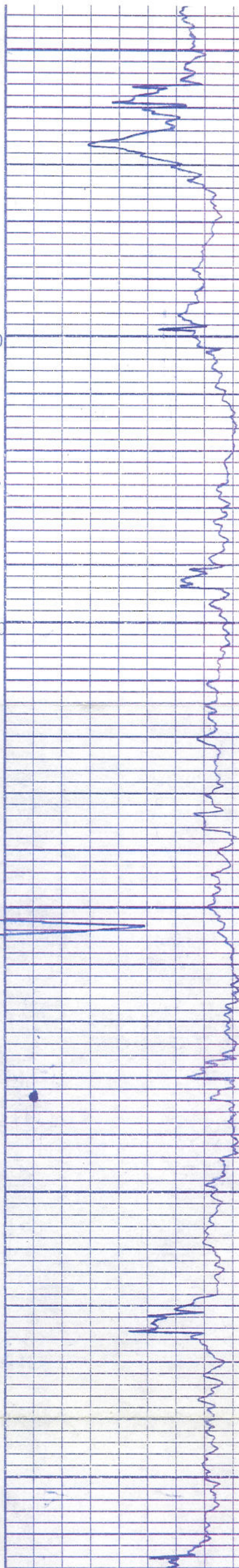
3250

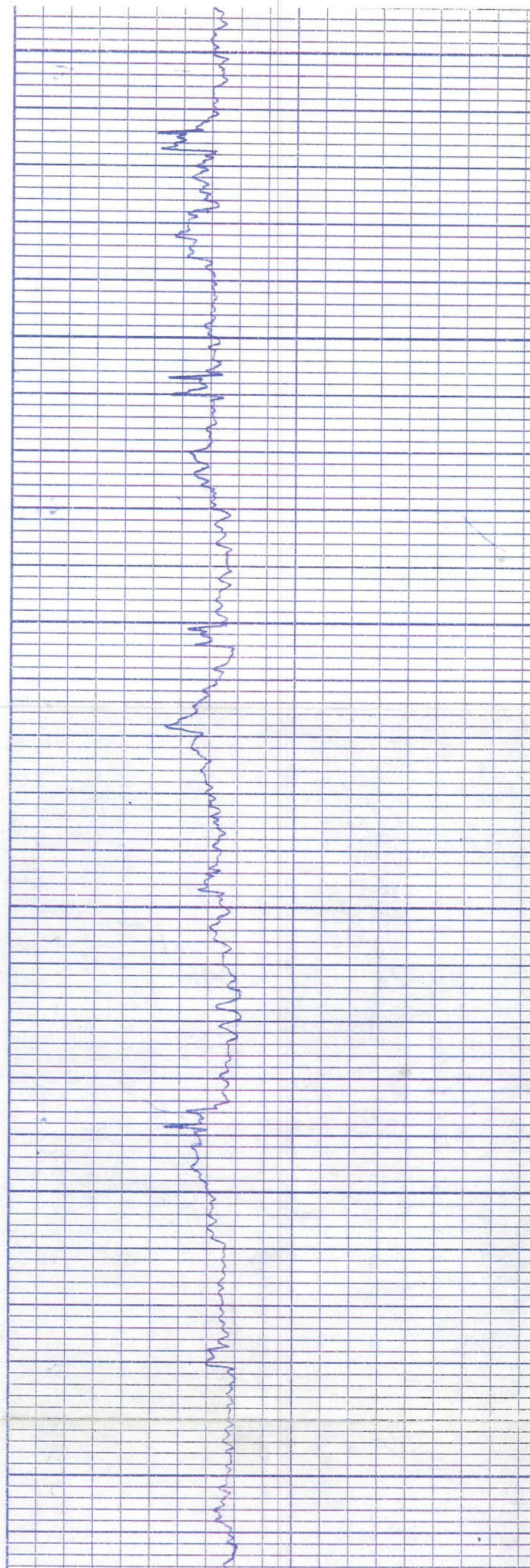
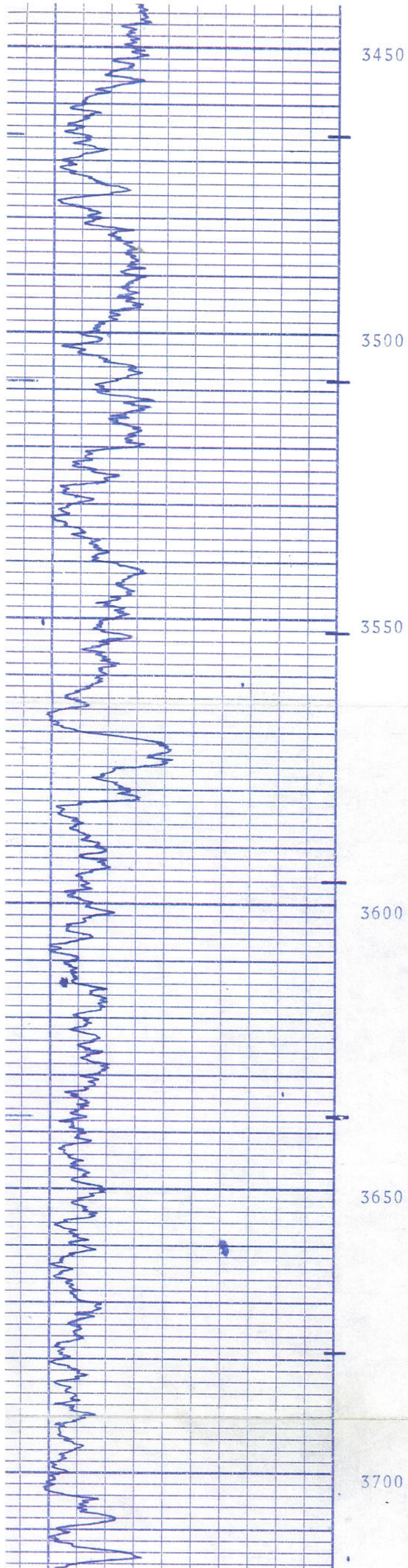
3300

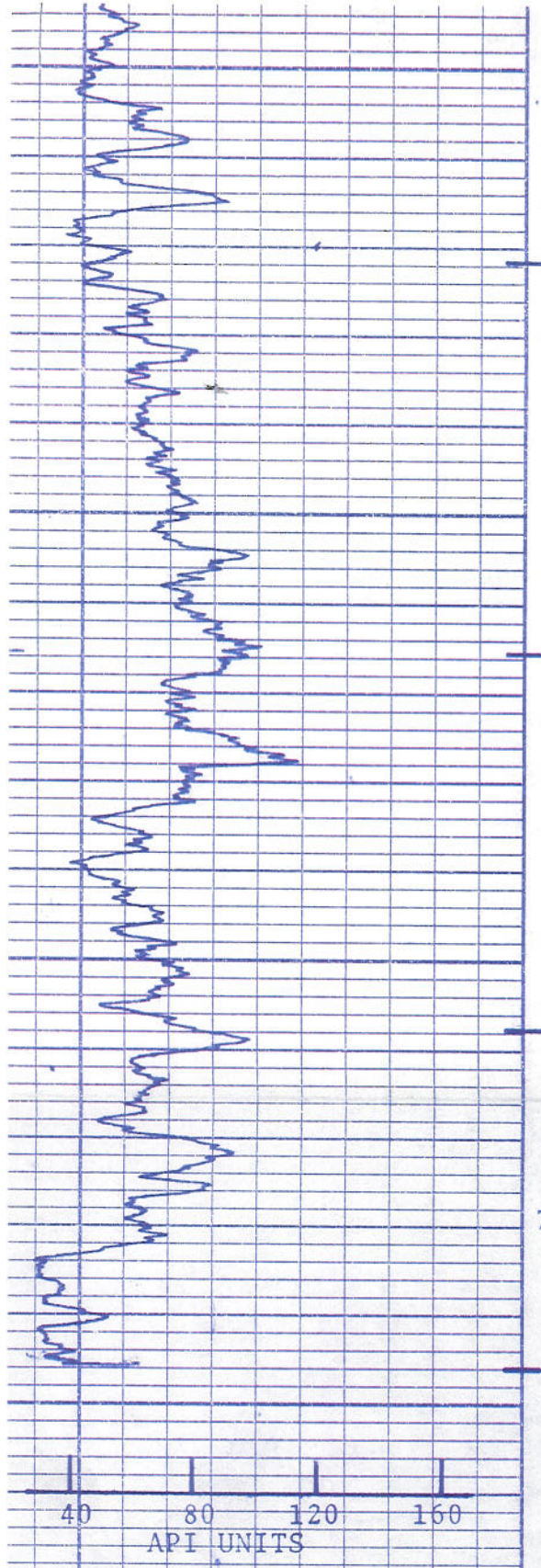
3350

3400

3450



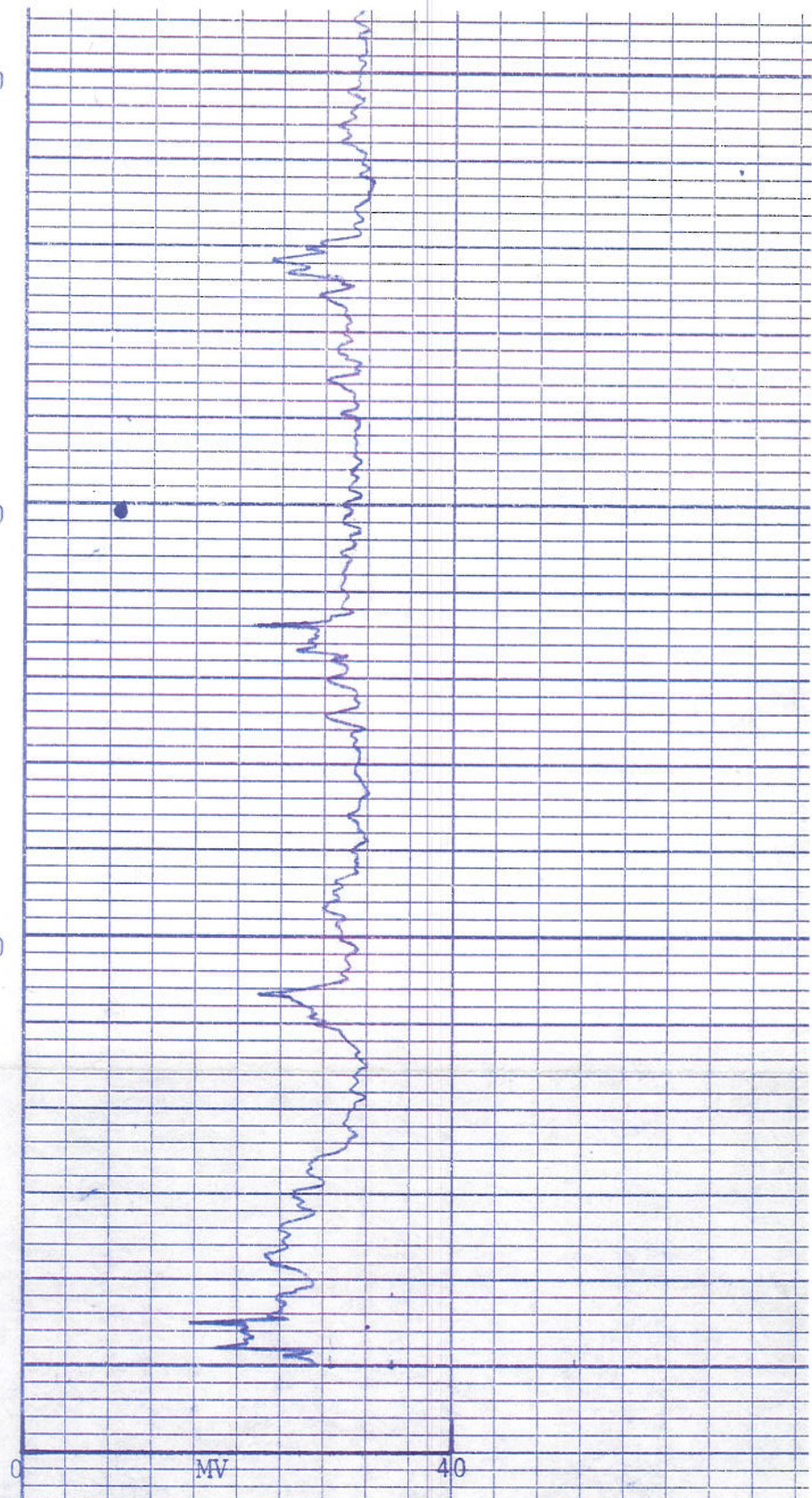




DID NOT LOG THIS INTERVAL

GAMMA RAY CURVE

API UNITS



BOND CEMENT CURVE

SONIC SEISMOGRAM

GAMMA RAY CURVE

API UNITS

40 80 120 160

GAMMA
ZERO-1"

BOND CEMENT CURVE

MV

40

200 MICRO-SECONDS

SONIC SEISMOGRAM

5400

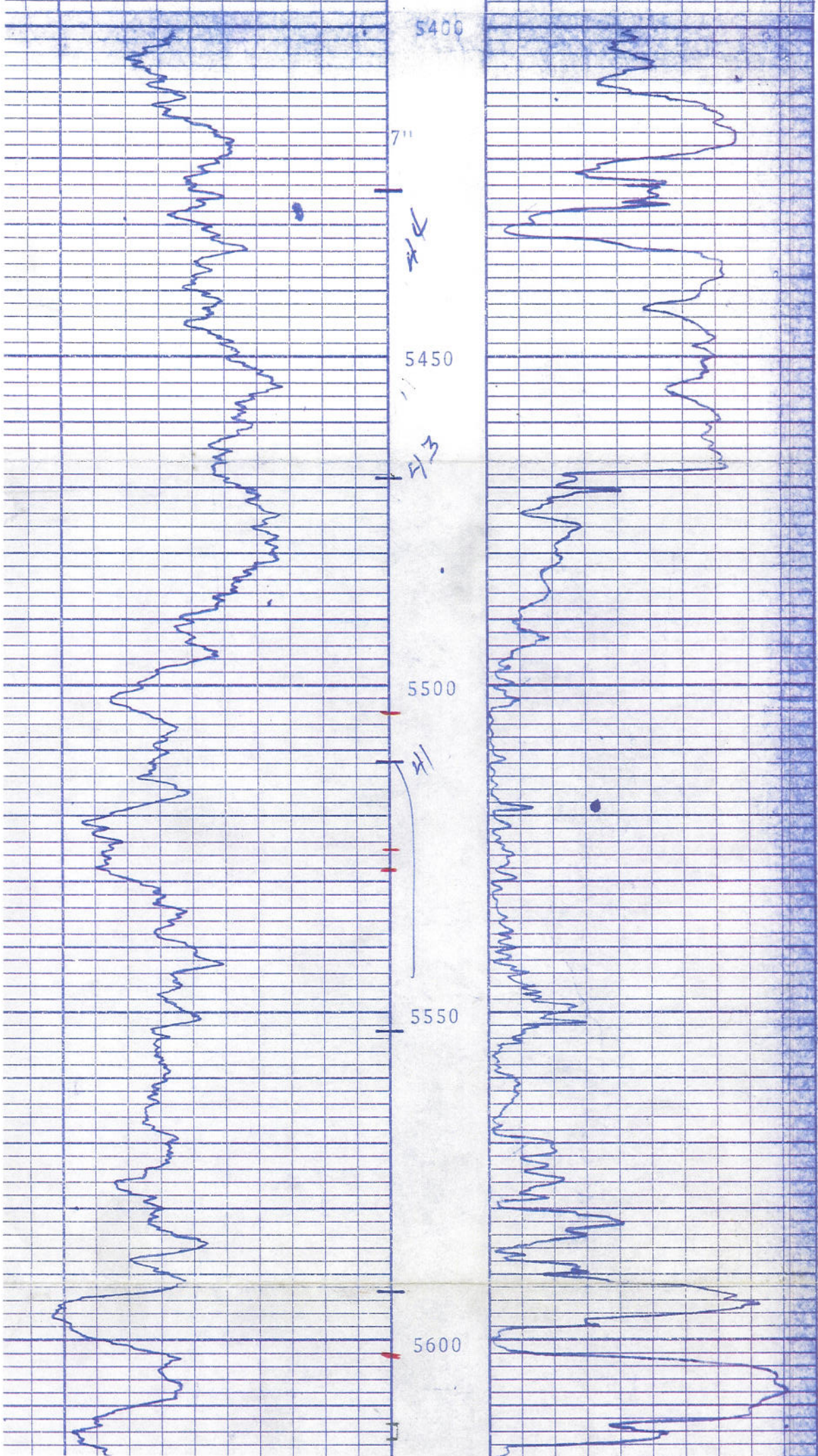
7"

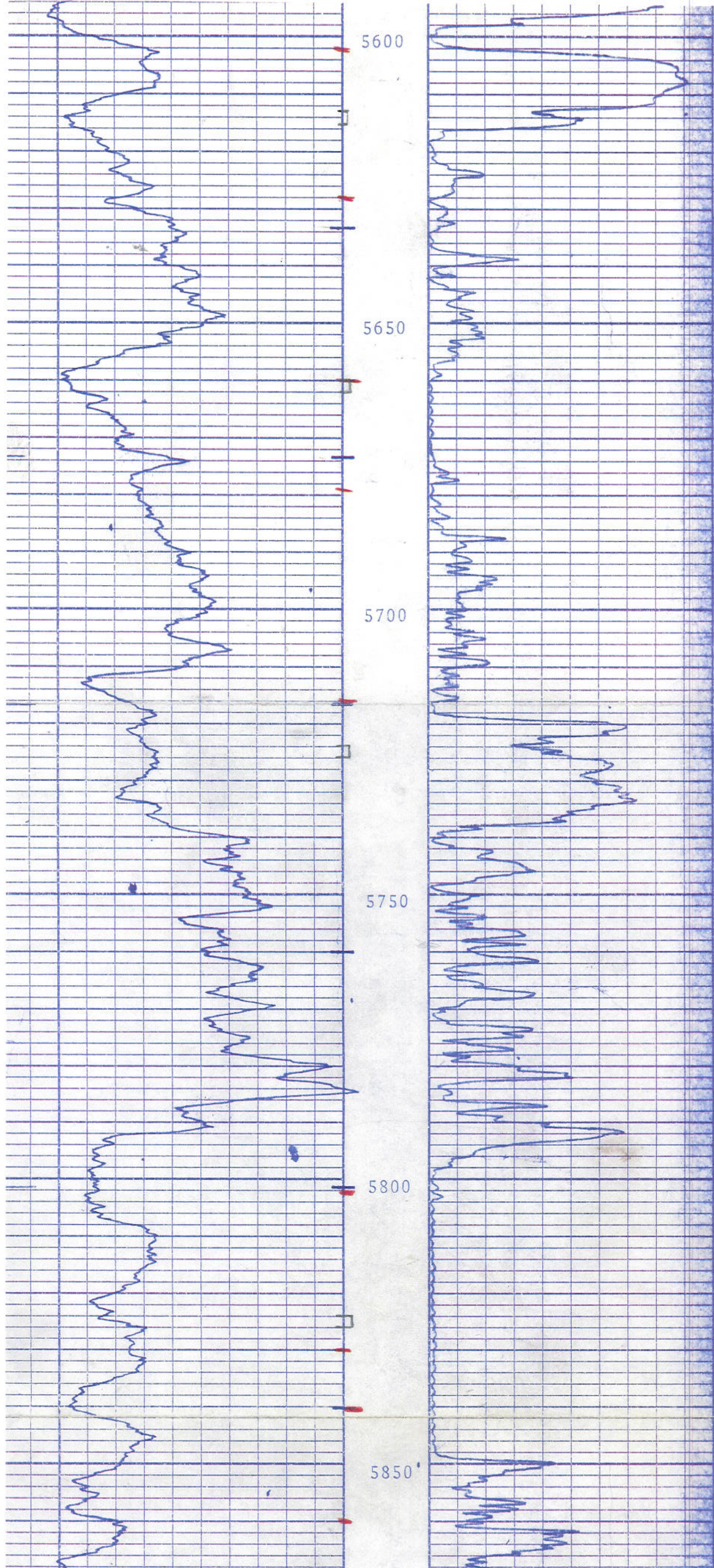
5450

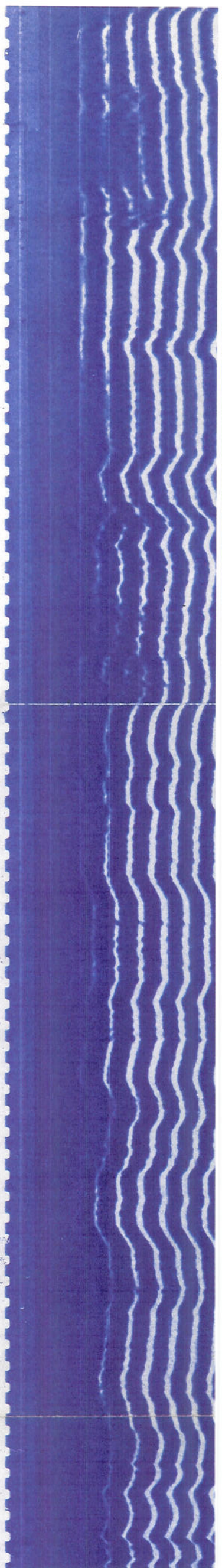
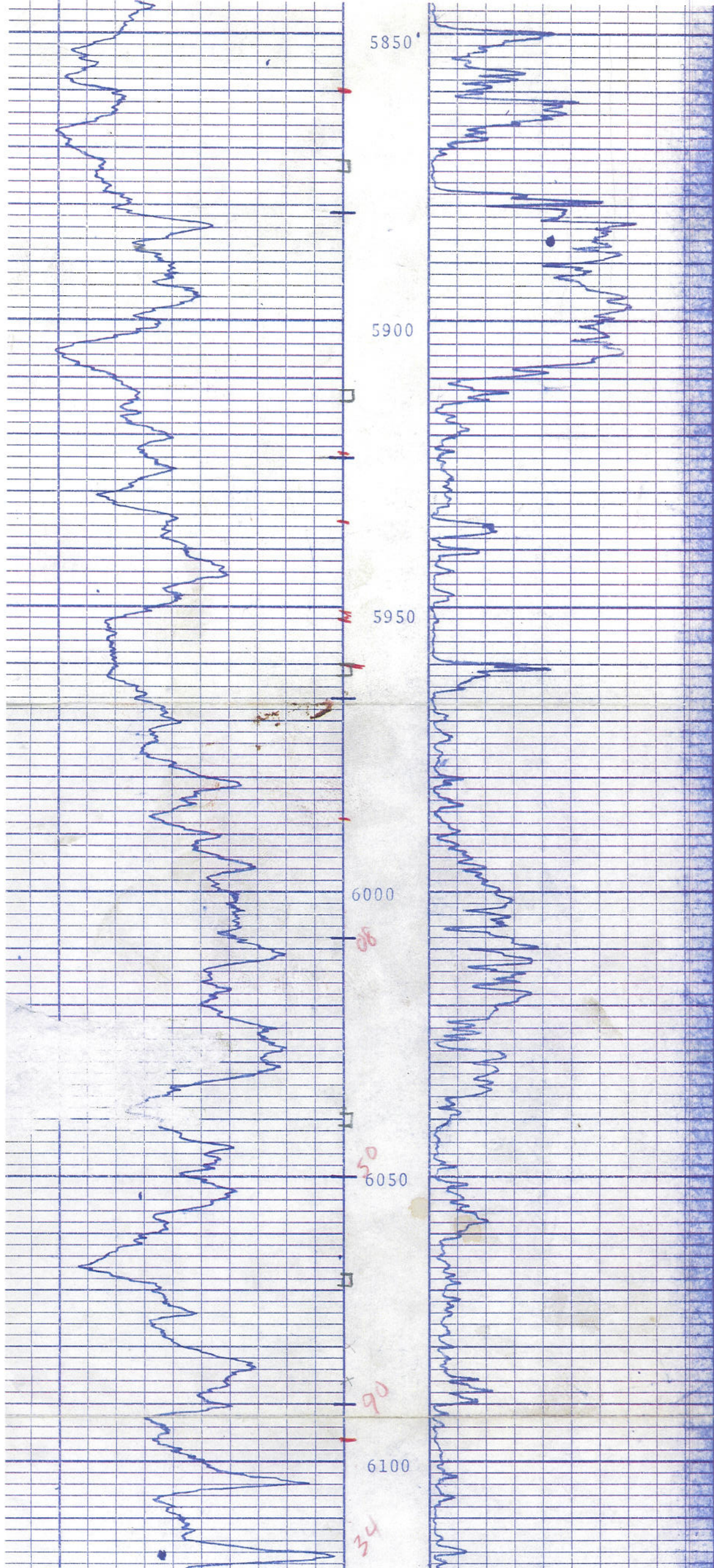
5500

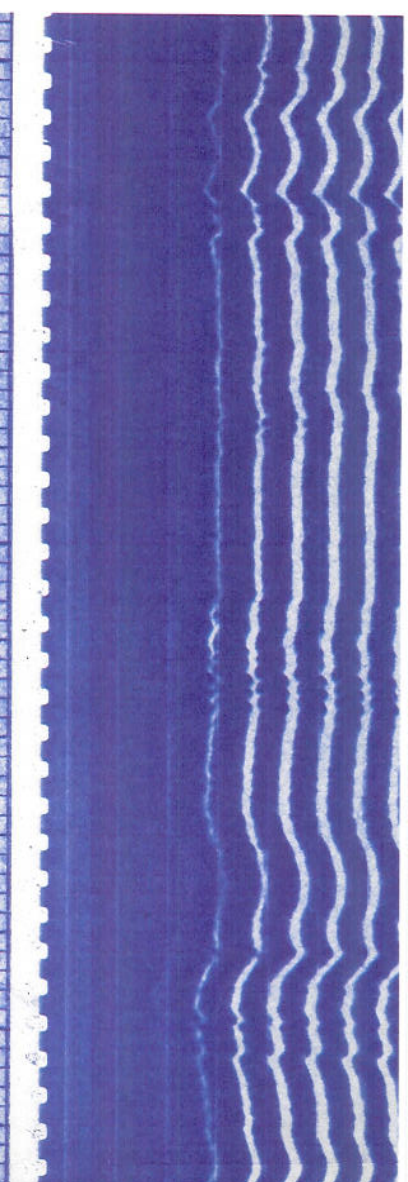
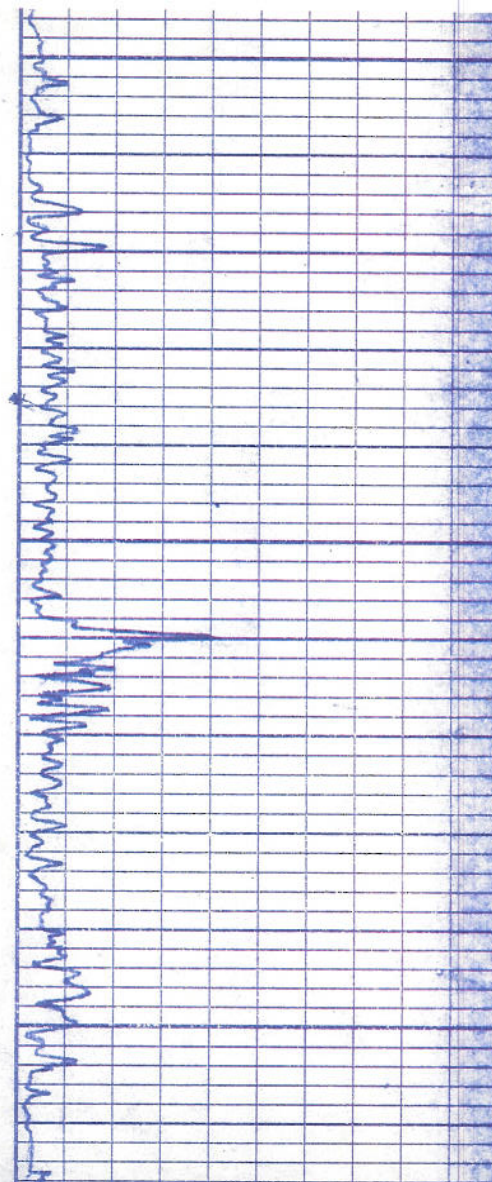
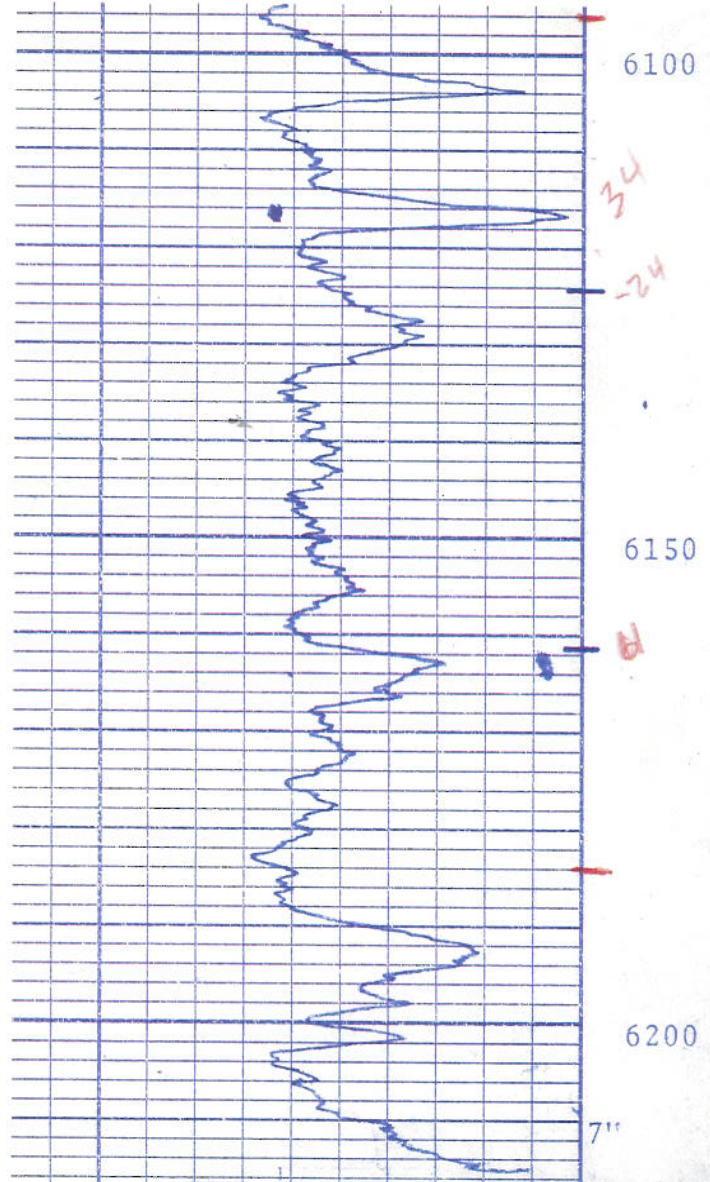
5550

5600









LOG BOTTOM 6220'

40 80 120 160

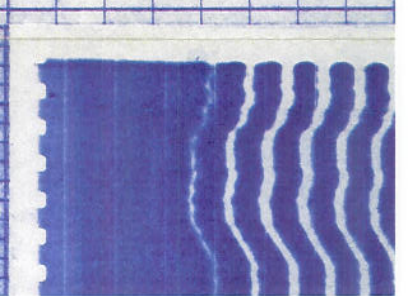
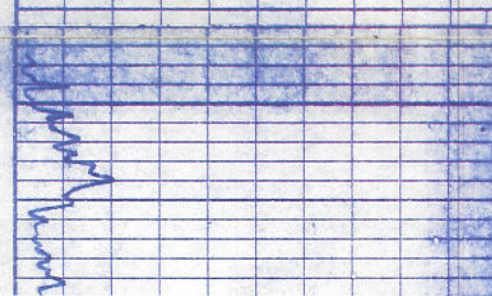
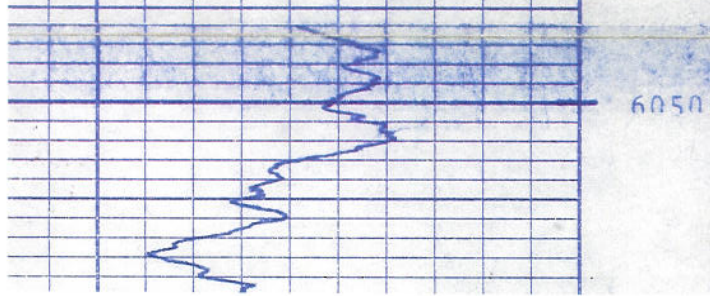
API UNITS

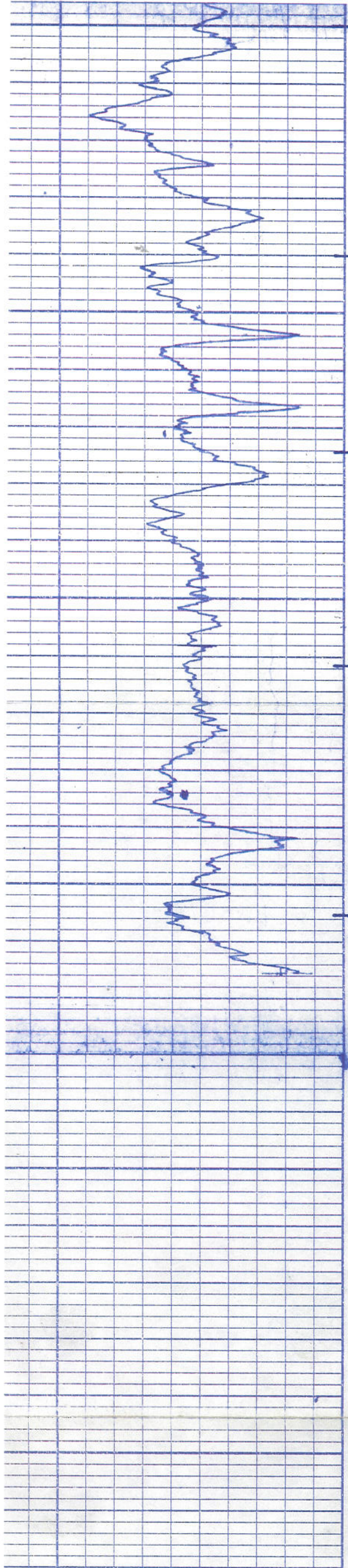
200 MICRO-SECONDS

MV

40

REPEAT SECTION



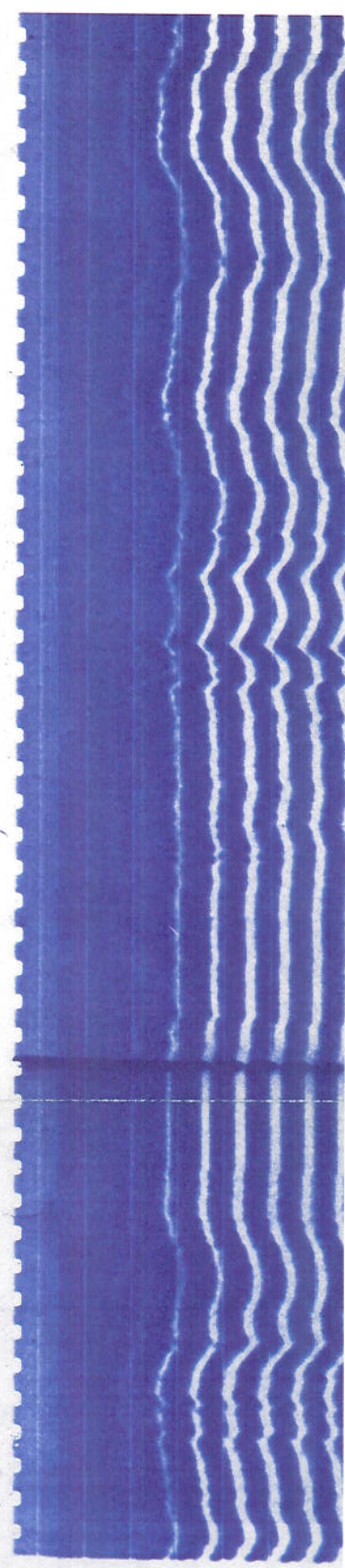
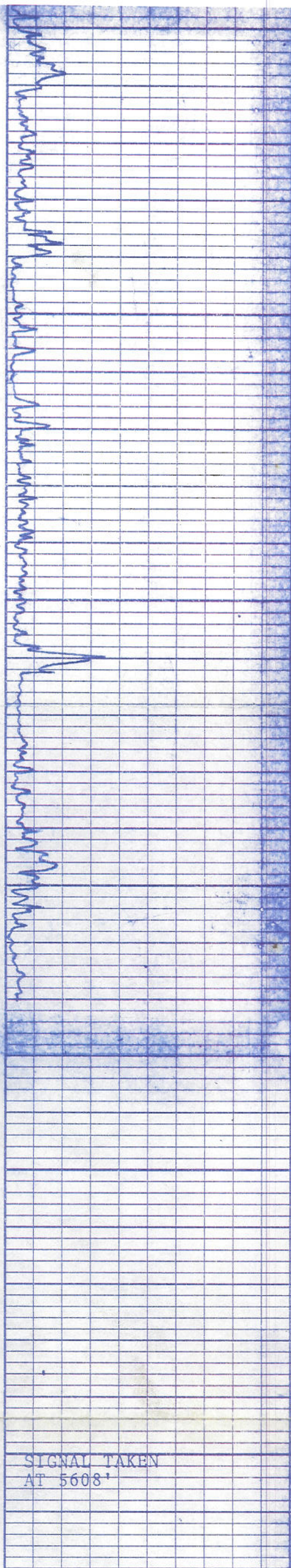


6050

6100

6150

6200

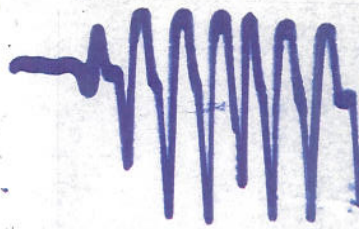


SCOPE PICTURES

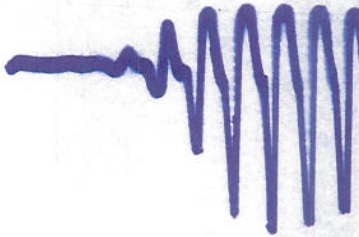
SIGNAL TAKEN
AT 5608'



SIGNAL TAKEN
AT 5608'



SIGNAL TAKEN
AT 6220'



CHEVRON OIL COMPANY
S.W. McLAUGHLIN #7-X
RANGELY FIELD
RIO BLANCO COUNTY, COLORADO



McCullough[®]

BOND CEMENT AND-OR SONIC SEISMOGRAM LOG

GAMMA RAY

FILING NO.

HBC-GR-SS-66077

COMPANY CHEVRON OIL COMPANY

WELL S.W. McLAUGHLIN #7-X

FIELD RANGELY

COUNTY RIO BLANCO STATE COLORADO

LOCATION:

2560' FSL & 1252' FWL

OTHER SERVICES:

SEC. 33 TWP. 2N RGE. 102W

G.L. ELEV. 5215'

K.B.

K.B.

ELEVATIONS:
KB. 5227'

DF. 5215'

DATE 8-20-72

RUN NO. ONE

TYPE LOG BOND CEMENT-GR-SONIC SEISMOGRAM

DEPTH-DRILLER 6227'

DEPTH-LOGGER 6225'

BOTTOM LOGGED INTERVAL 6220' - 3850'

TOP LOGGED INTERVAL 5400' - 2700'

TYPE FLUID IN HOLE OIL

SALINITY PPM CL.

DENSITY LB./GAL.

LEVEL 480'

MAX. REC. TEMP. DEG. F.

OPR. RIG TIME

RECORDED BY ROBISON

WITNESSED BY MR. CROCKETT

SCANNED
INTO EWE

RUN

NO.

BIT

FROM

TO

SIZE

WGT.

FROM

TO

T.D.