



**WIRELINE**  
SERVICES

**CEMENT BOND  
GAMMA RAY  
CCL LOG**

Company	ENCANA OIL & GAS	Location:	API # : 05-045-20388-00	Other Services			
Well	TWIN CREEK 12-5D1			NONE			
Field	MAMM CREEK						
County	GARFIELD						
State	COLORADO						
Permanent Datum	SEC 12 TWP 7S RGE 92W						
Log Measured From	G.L. KELLY BUSHING						
Drilling Measured From	K.B. 22						
Elevation	6144.8						
K.B. 6166.8							
D.F. 6165.8							
G.L. 6144.8							
Date	30 JAN 2012						
Run Number	ONE						
Depth Driller	1100						
Depth Logger	1052						
Bottom Logged Interval	1052						
Top Log Interval	SURFACE						
Open Hole Size	N/A						
Type Fluid	WATER						
Density / Viscosity	8.3						
Max. Recorded Temp.	80 DEG F						
Estimated Cement Top	SURFACE						
Time Well Ready	20:00						
Time Logger on Bottom	20:30						
Equipment Number	P-75						
Location	GRAND JUNCTION						
Recorded By	MATT BROWN						
Witnessed By	ROBERT TATE						
Run Number	Bit	From	To	Size	Weight	From	To
Casing Record	Size		Wgt/Ft		Top		Bottom
Surface String	9.625		36		SURFACE		1100
Prot. String							
Production String							
Liner							

<<< Fold Here >>>

All interpretations are opinions based on inferences from electrical or other measurements and we cannot and do not guarantee the accuracy or correctness of any interpretation, and we shall not, except in the case of gross or willful negligence on our part, be liable or responsible for any loss, costs, damages, or expenses incurred or sustained by anyone resulting from any interpretation made by any of our officers, agents or employees. These interpretations are also subject to our general terms and conditions set out in our current Price Schedule.

Comments

THANK YOU FOR USING E & P WIRELINE SERVICES  
GRAND JUNCTION COLORADO  
970 245 5563

MAIN PASS

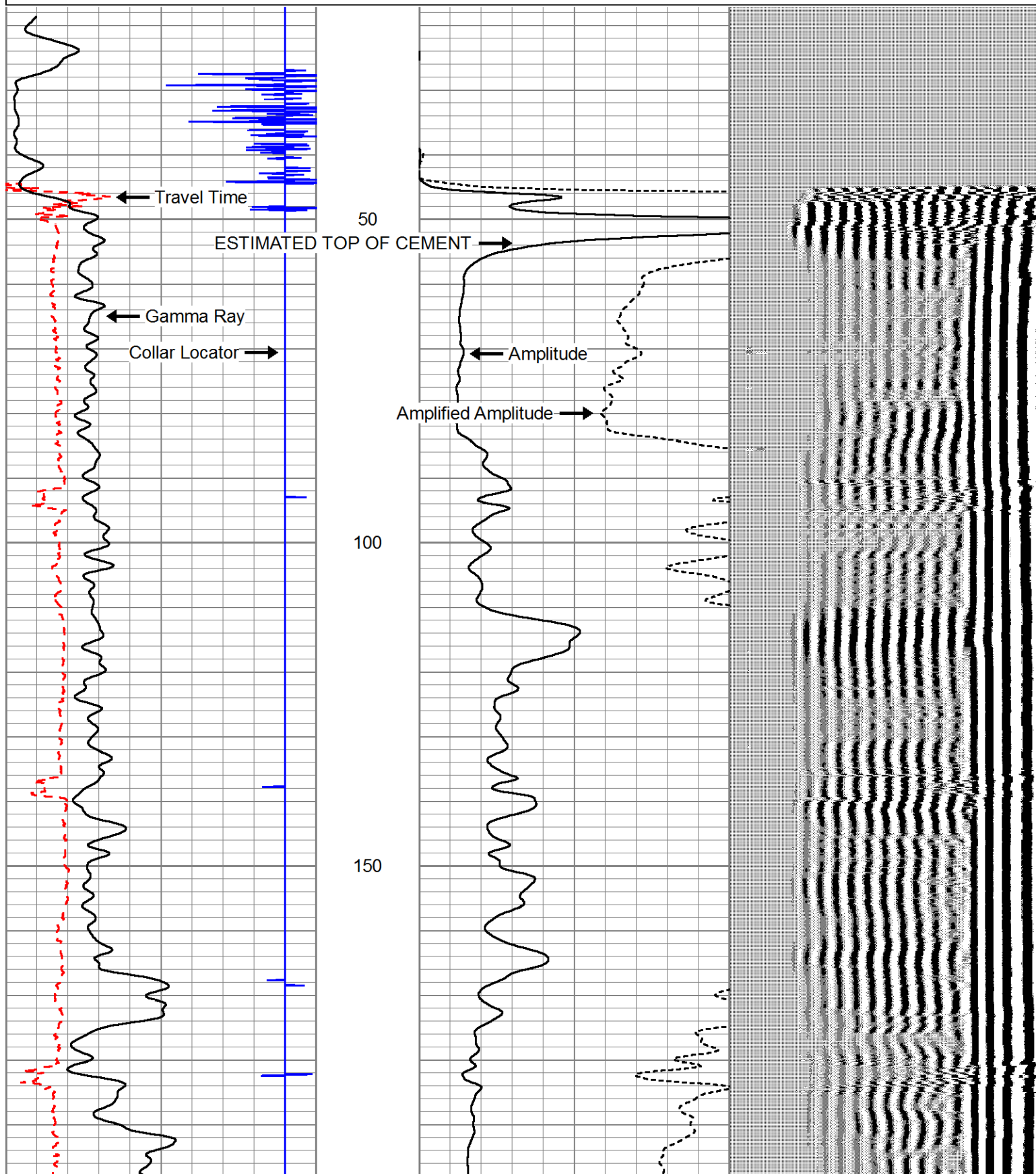


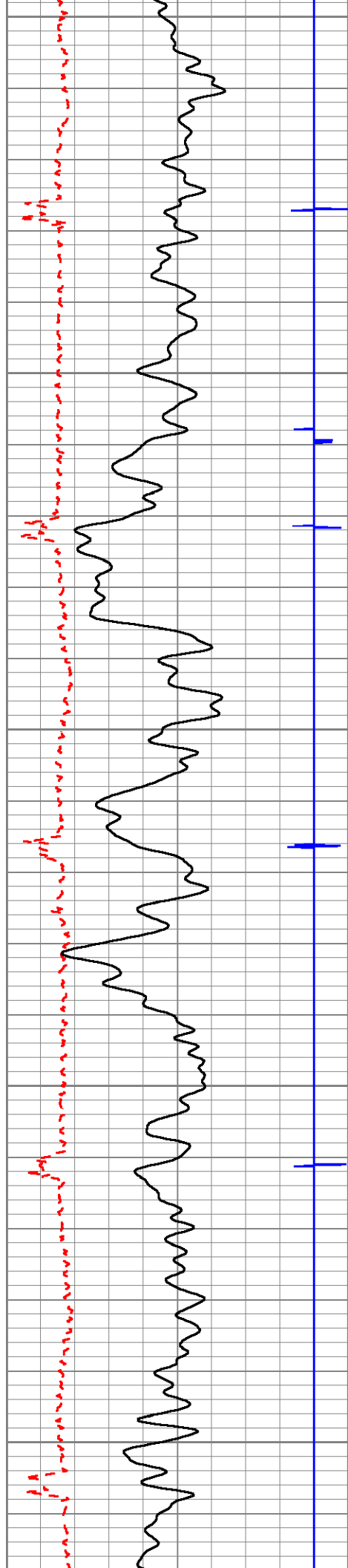
Database File: twincreek\_12\_5d1.db  
Dataset Pathname: pass11.6  
Presentation Format: cbltemp  
Dataset Creation: Mon Jan 30 21:41:17 2012 by Calc SCH 110722  
Charted by: Depth in Feet scaled 1:240

300	Travel Time (usec)	200
-9	Collar Locator	1
0	Gamma Ray (cps)	150

0	Amplified Amplitude (mV)	20
0	Amplitude (mV)	100

200 Variable Density 1200





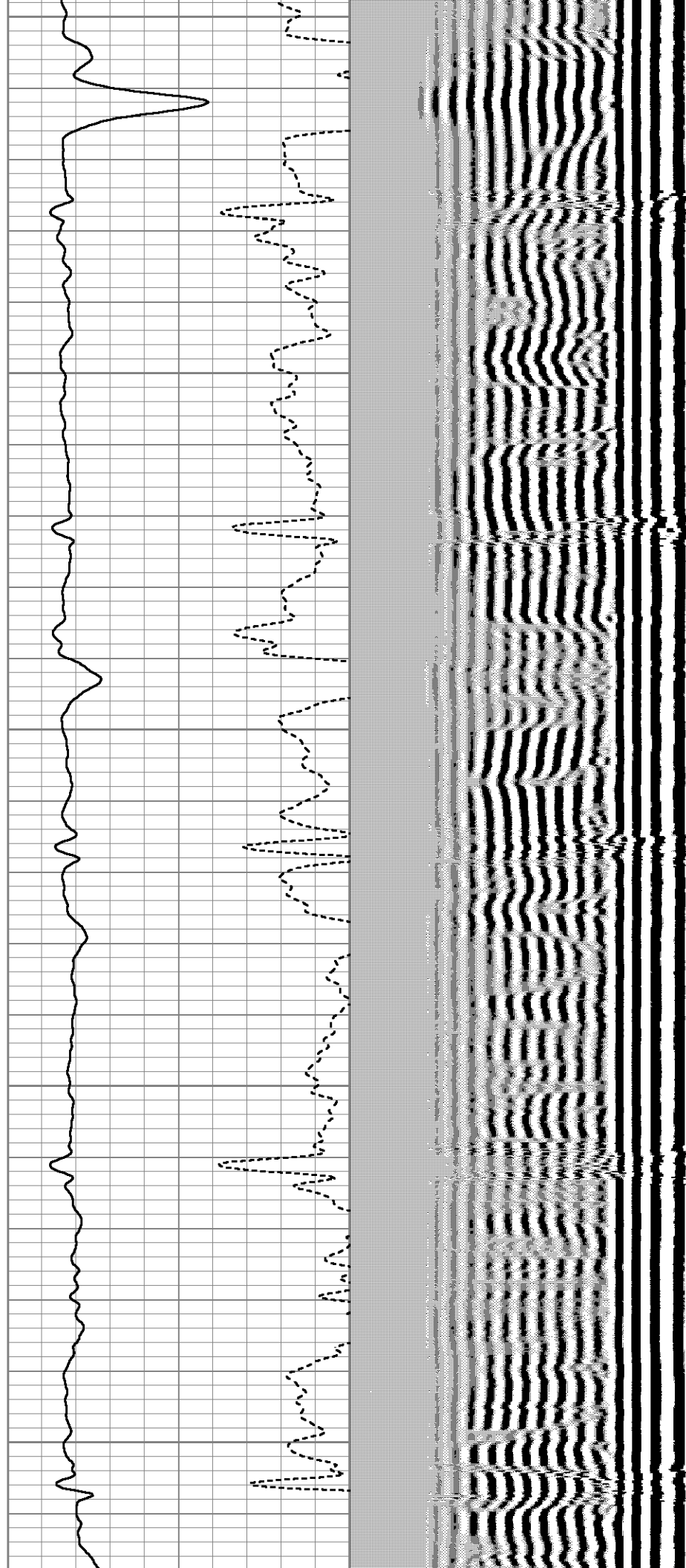
200

250

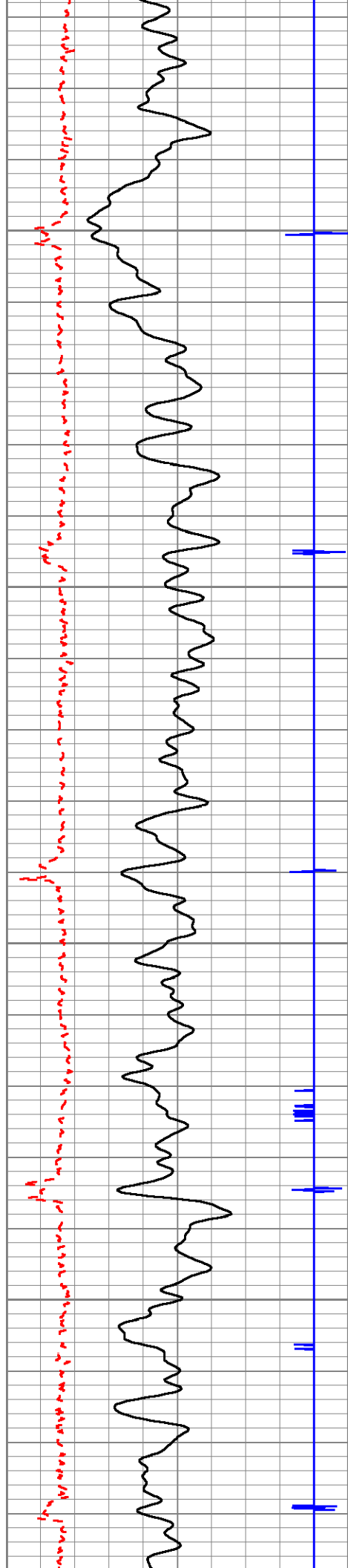
300

350

400





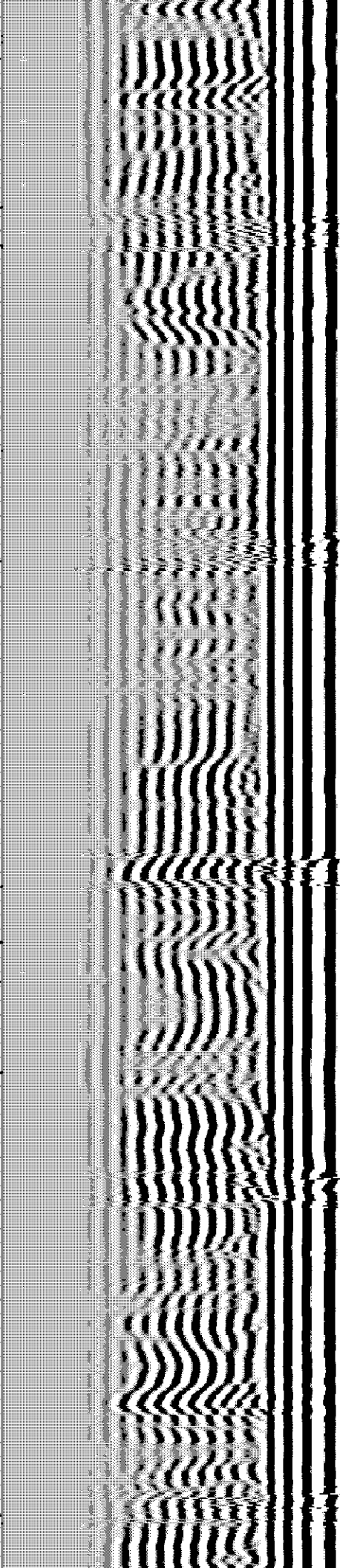
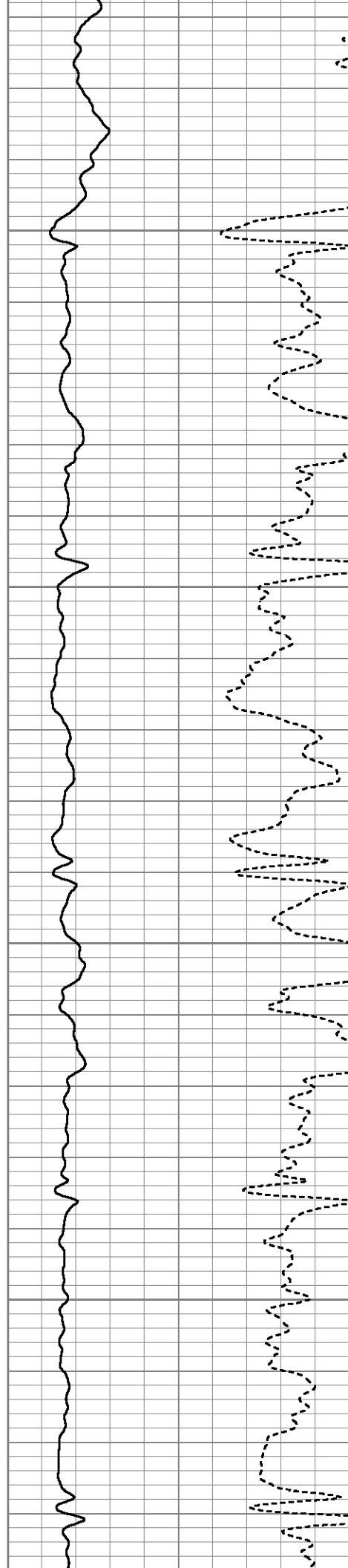


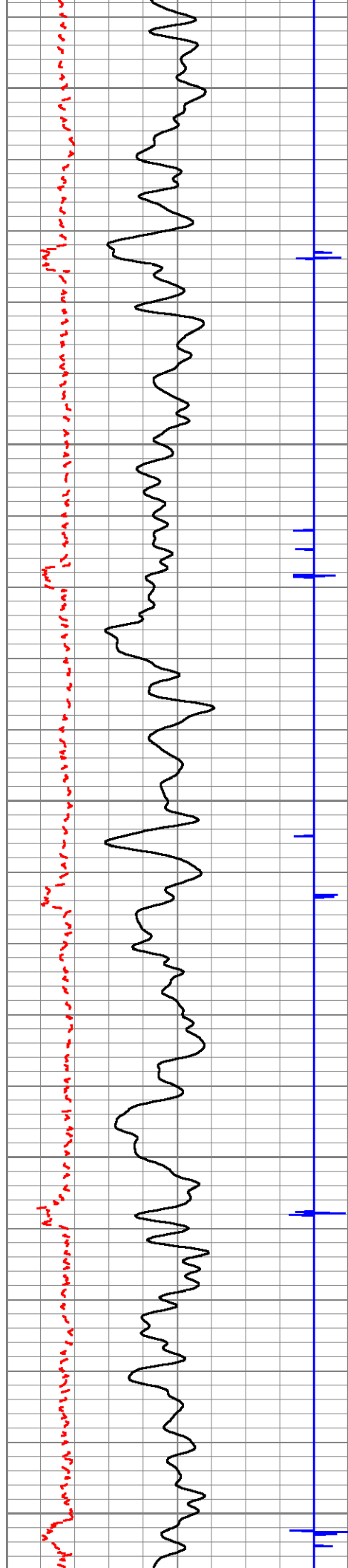
450

500

550

600





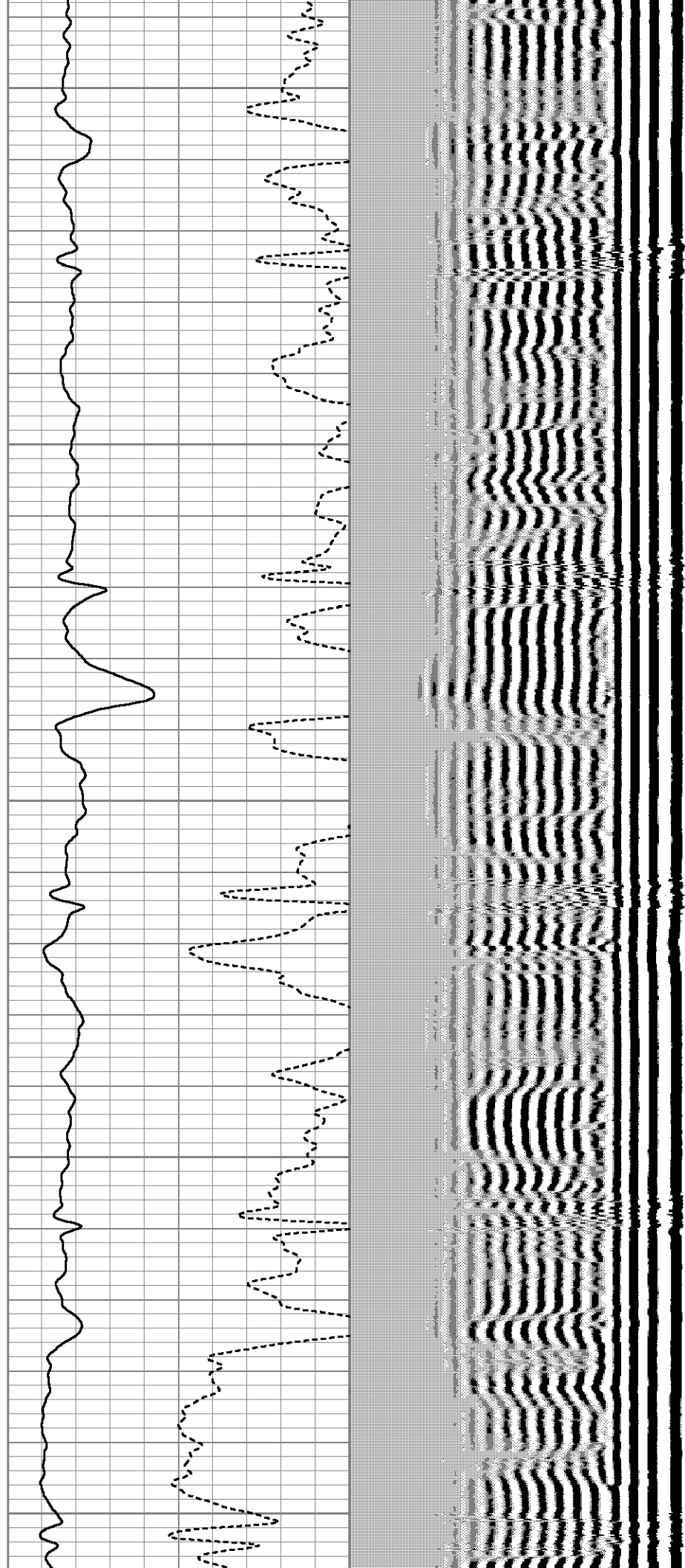
650

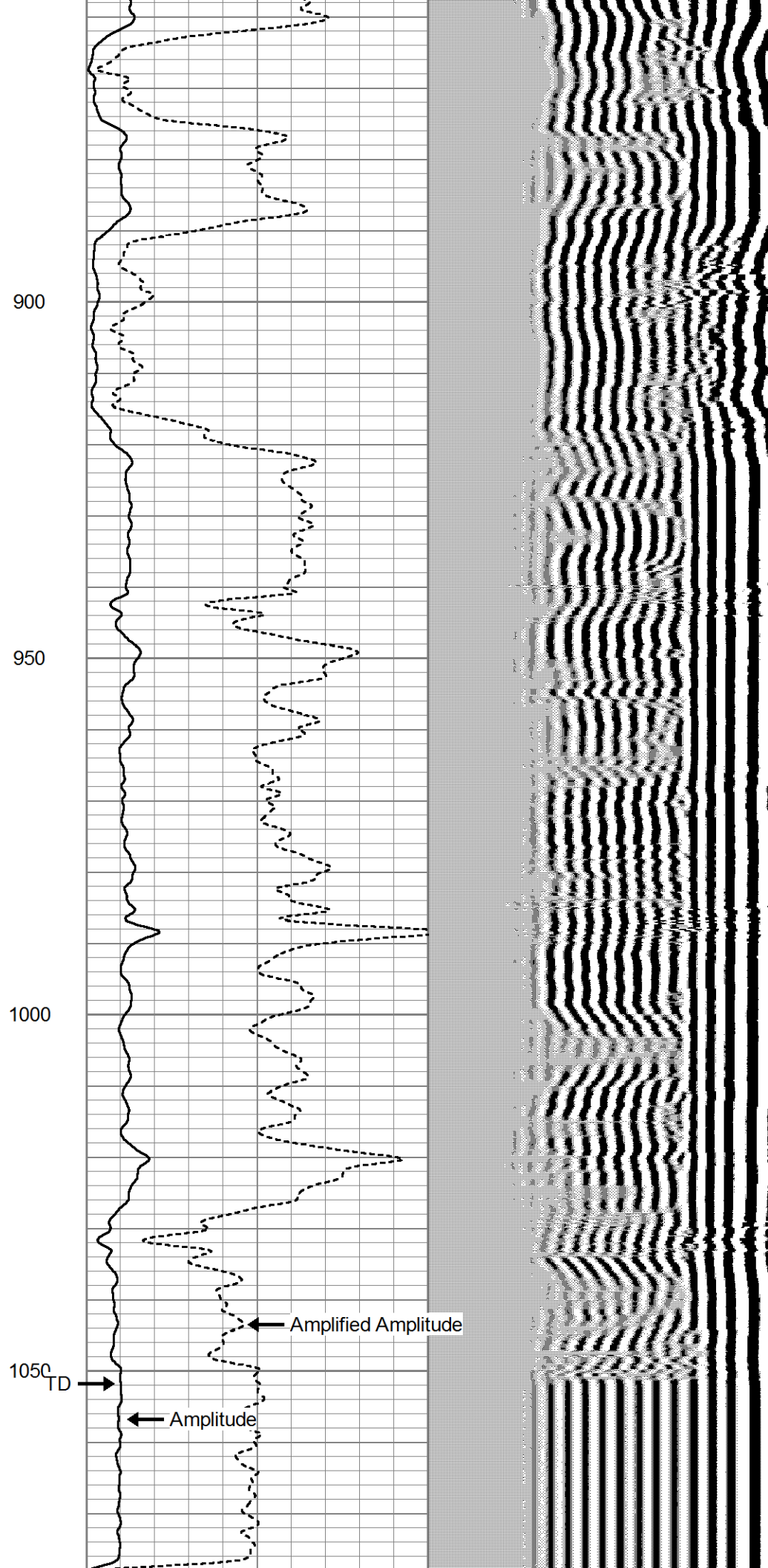
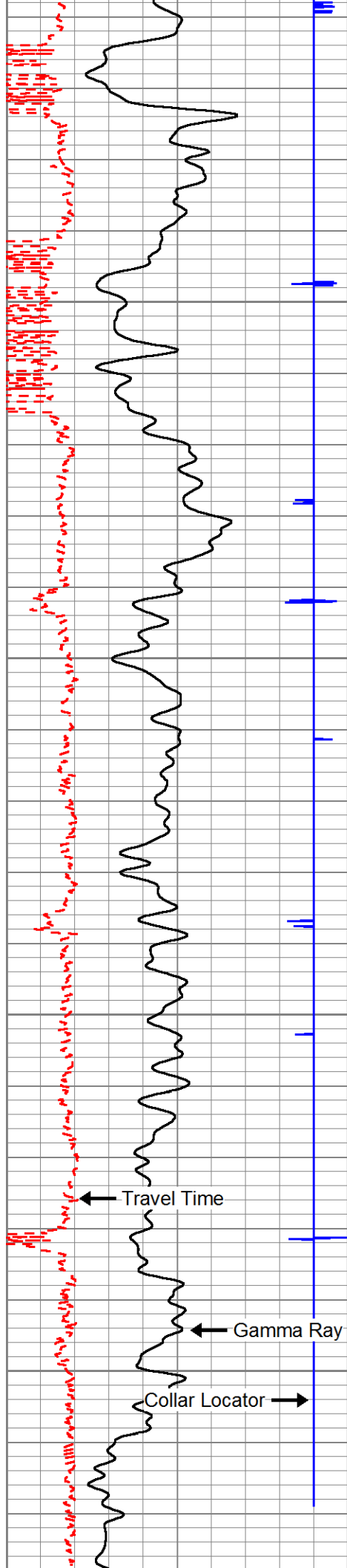
700

750

800

850







300	Travel Time (usec)	200
-9	Collar Locator	1
0	Gamma Ray (cps)	150

0	Amplified Amplitude (mV)	20
0	Amplitude (mV)	100

200 Variable Density 1200



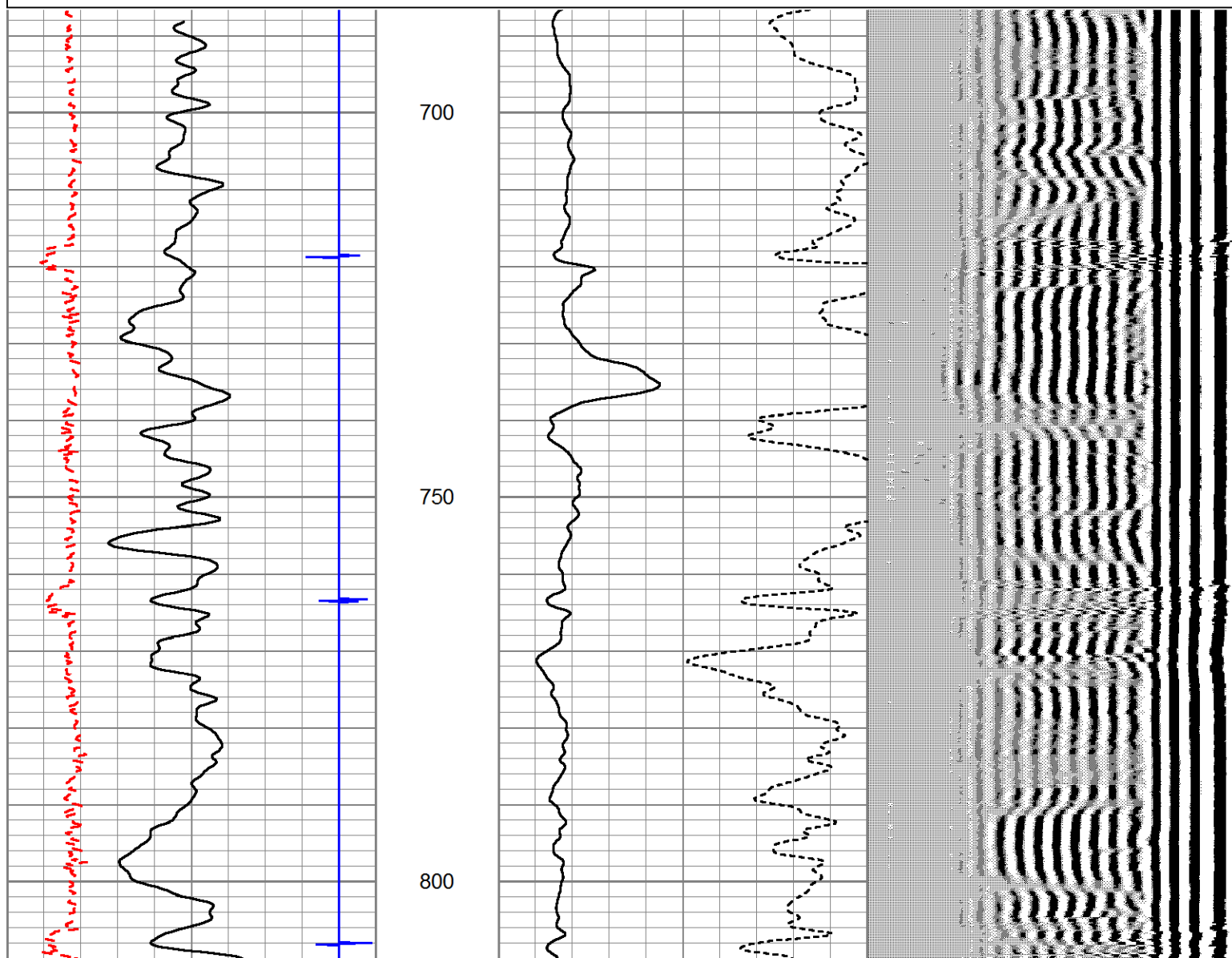
## REPEAT PASS

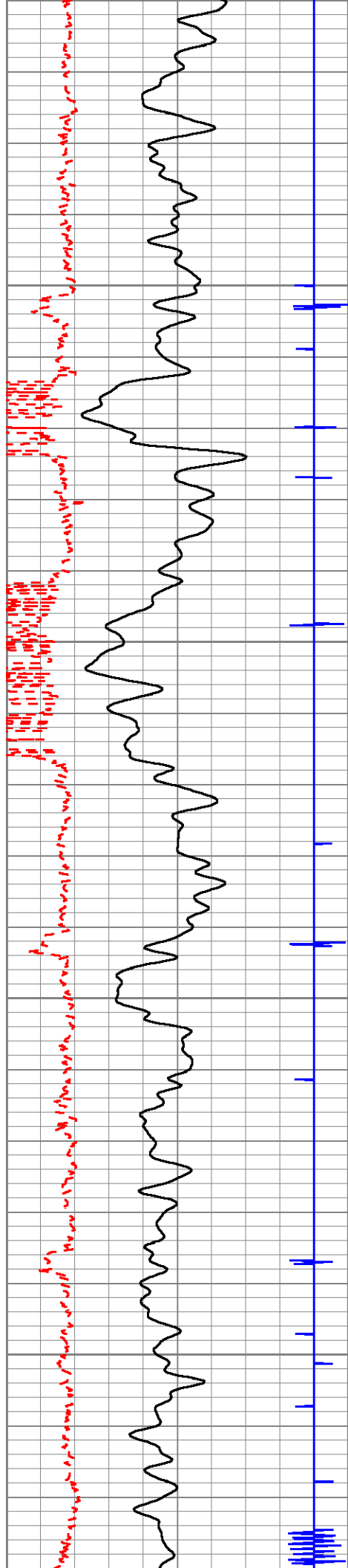
Database File: twincreek\_12\_5d1.db  
 Dataset Pathname: pass9.1  
 Presentation Format: cbltemp  
 Dataset Creation: Mon Jan 30 21:56:47 2012 by Calc SCH 110722  
 Charted by: Depth in Feet scaled 1:240

300	Travel Time (usec)	200
-9	Collar Locator	1
0	Gamma Ray (cps)	150

0	Amplified Amplitude (mV)	20
0	Amplitude (mV)	100

200 Variable Density 1200



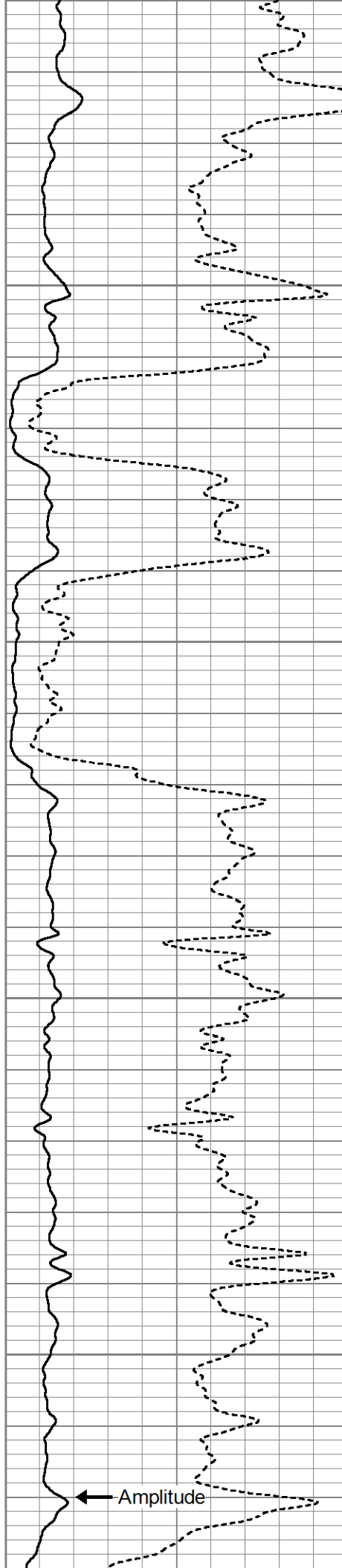


850

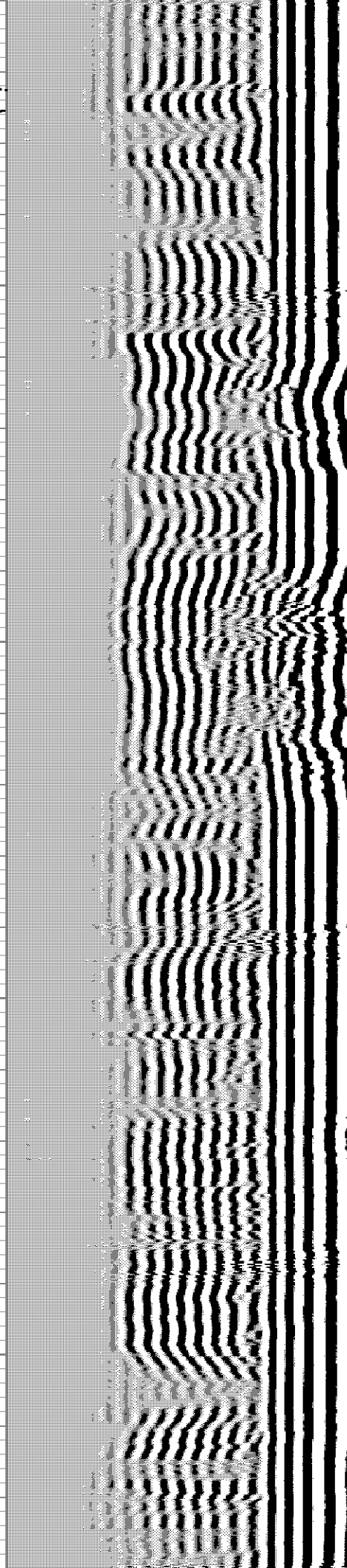
900

950

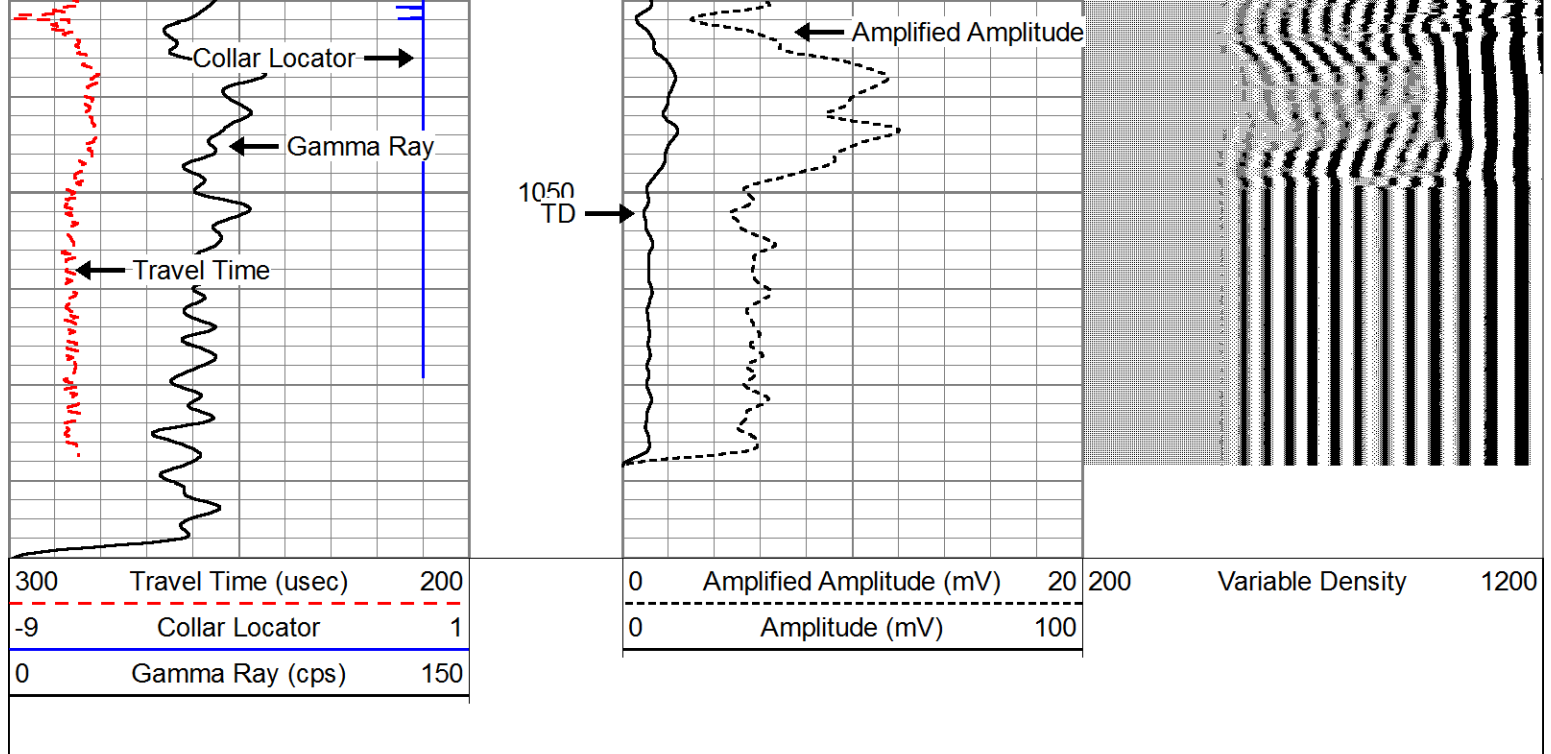
1000



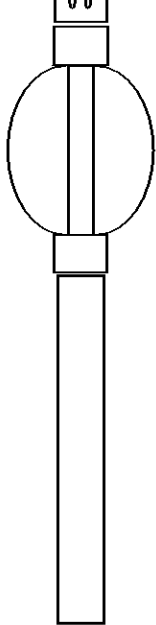
Amplitude







Sensor	Offset (ft)	Schematic	Description	Len (ft)	OD (in)	Wt (lb)
CCL	18.71		CCL-MTEKCO (14) 2 3/4" TEKCO CCL	1.83	2.75	10.00
			comp 2 3/4" COMPUTALOG BOW SPRING	2.64	2.75	10.00
TEMP	12.78					
WVF3FT	10.62		CBL-2.75TEKCONEW (CBLTEMP) 2 3/4" TEKCO 400 DEG. (DUAL REC.) CBL TEMP TOOL	9.08	2.75	90.00
WVF5FT	9.62					

WVFTEMP	6.33		comp 2 3/4" COMPUTALOG BOW SPRING	2.64	2.75	10.00
GR	1.08		GR-MTEKCO (14) 2 3/4" TEKCO GR	3.69	2.75	20.00
Dataset: twincreek_12_5d1.db: field/well/run1/pass9.1 Total Length: 19.88 ft Total Weight: 140.00 lb O.D. 2.75 in						