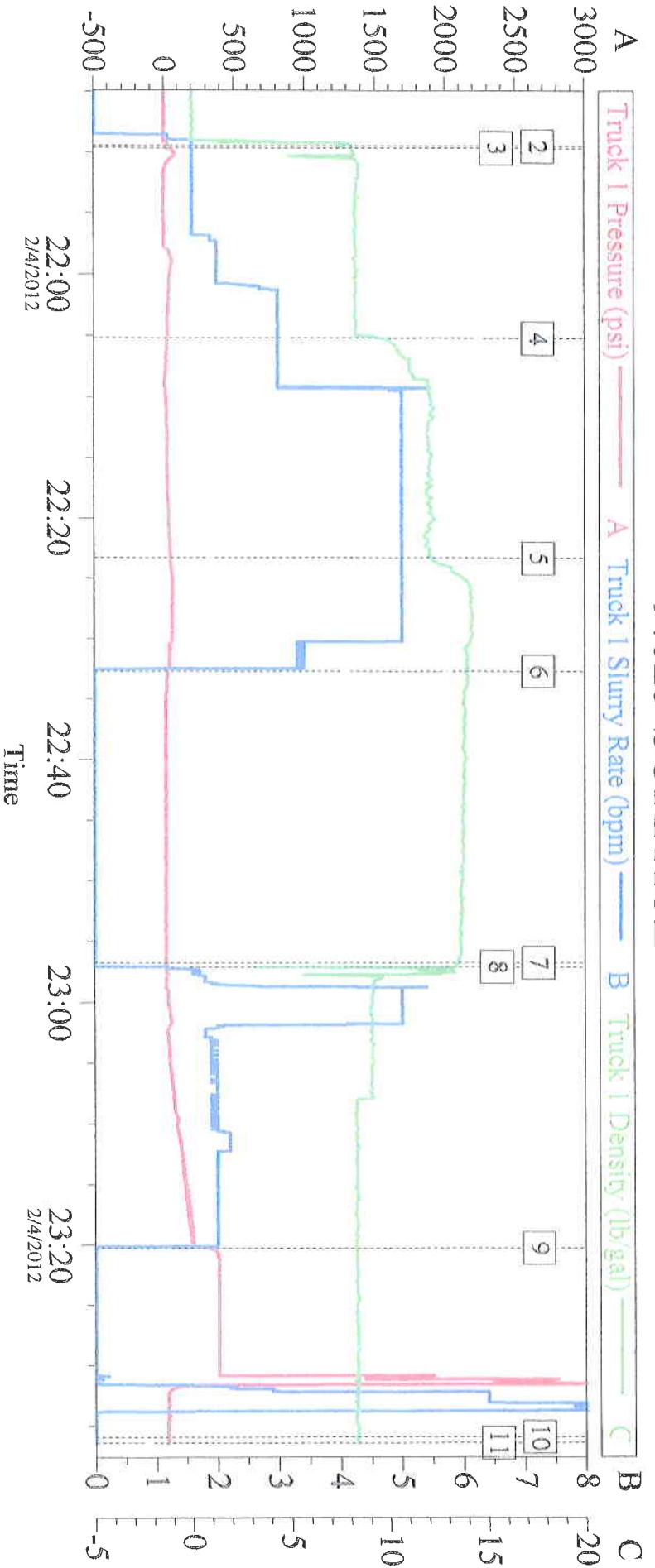


# STRATA X 9.625 SURFACE



## Global Event Log

Intersection	TIP	TISR	TID	Intersection	TIP	TISR	TID
1 Starting Job	0.000	0.000	-0.010	2 Start Job	24.00	1.600	7.933
3 Pump Spacer 1	51.88	1.600	8.110	4 Pump Lead Cement	22:05:12	3.000	9.606
5 Pump Tail Cement	45.00	5.000	12.24	6 Shutdown	22:32:41	0.000	13.91
7 Drop Top Plug	11.00	0.000	13.43	8 Pump Displacement	22:57:04	11.00	3.138
9 Bump Plug	329.1	0.000	8.331	10 End Job	23:35:53	18.00	0.000
11 Ending Job	17.00	0.000	8.350				

Customer: STRATA X  
Well Description: 9.625 SURFACE

Job Date: THANKS LARRY LAVALLEY AND CREW

04-Feb-2012

Sales Order #: 9262302

OptiCem v6.4.10  
04-Feb-12 23:37

Tools and Accessories													
Type	Size	Qty	Make	Depth	Type	Size	Qty	Make	Depth	Type	Size	Qty	Make
Guide Shoe					Packer					Top Plug			
Float Shoe					Bridge Plug					Bottom Plug			
Float Collar					Retainer					SSR plug set			
Insert Float										Plug Container			
Stage Tool										Centralizers			

Miscellaneous Materials															
Gelling Agt	Conc	Surfactant	Conc	Acid Type	Qty	Conc	%	Treatment Fld	Conc	Inhibitor	Conc	Sand Type	Qty	Conc	%

Fluid Data										
Stage/Plug #: 1										
Fluid #	Stage Type	Fluid Name	Qty	Qty uom	Mixing Density lbm/gal	Yield ft3/sk	Mix Fluid Gal/sk	Rate bbl/min	Total Mix Fluid Gal/sk	
1	Water Spacer		30.00	bbl	8.34	.0	42.0	5.0		
2	Trinidad Surface Blend 12#	TRINIDAD SURFACE BLEND - SBM (137081)	160.0	sacks	12.	2.58	14.77	5.0	14.77	
	2 %	CAL-SEAL 60, 50 LB BAG (101217146)								
	2 %	ECONOLITE (100001580)								
	0.2 %	VERSASET, 55 LB SK (101376573)								
	6 %	SALT, 100 LB BAG (100003652)								
	0.1 %	SUPER CBL, 50 LB PAIL (100003668)								
	5 lbm	KOL-SEAL, 50 LB BAG (100064232)								
	14.77 Gal	FRESH WATER								
3	Trinidad Surface Blend 14#	TRINIDAD SURFACE BLEND - SBM (137081)	50.0	sacks	14.	1.67	7.93	5.0	7.93	
	2 %	CAL-SEAL 60, 50 LB BAG (101217146)								
	2 %	ECONOLITE (100001580)								
	0.2 %	VERSASET, 55 LB SK (101376573)								
	6 %	SALT, 100 LB BAG (100003652)								
	0.1 %	SUPER CBL, 50 LB PAIL (100003668)								
	5 lbm	KOL-SEAL, 50 LB BAG (100064232)								
	7.93 Gal	FRESH WATER								

Calculated Values		Pressures		Volumes					
Displacement	57	Shut In: Instant		Lost Returns	0	Cement Slurry	88	Pad	
Top Of Cement		5 Min		Cement Returns	15	Actual Displacement	57	Treatment	
Frac Gradient		15 Min		Spacers	30	Load and Breakdown		Total Job	175

Rates									
Circulating		Mixing	5	Displacement	5	Avg. Job	5		
Cement Left In Pipe	Amount	0 ft	Reason	Shoe Joint					
Frac Ring # 1 @	ID	Frac ring # 2 @	ID	Frac Ring # 3 @	ID	Frac Ring # 4 @	ID		

<b>The Information Stated Herein Is Correct</b>	Customer Representative Signature
---	-----------------------------------