

Project: Wattenberg Field
Site: K (Sec. 1-T04-R66W) Weld County, CO
Well: Loeffler K1-67-1HN
Wellbore: Original Drilling
Design: APD - Rev 0

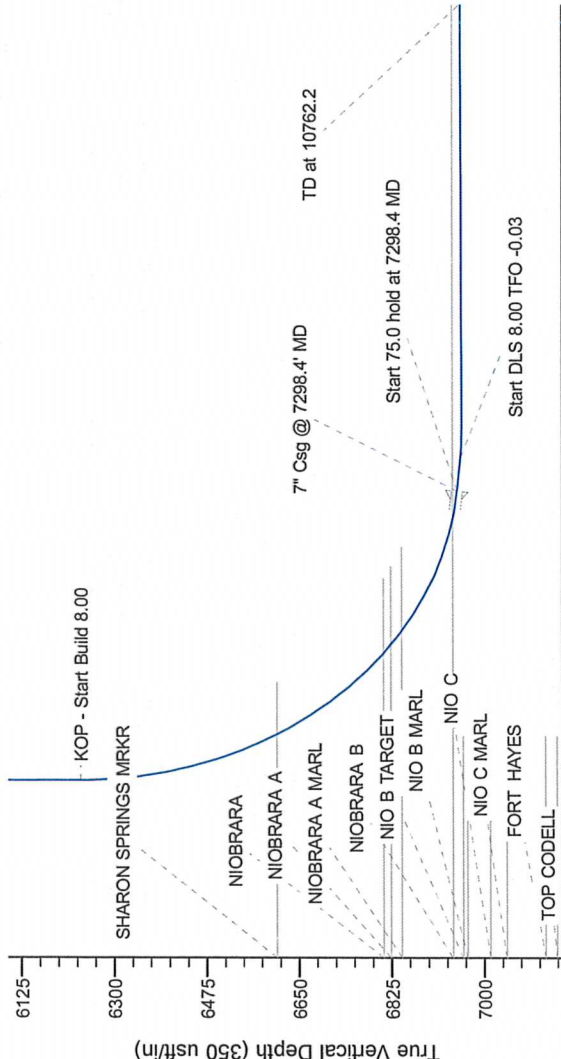
Northern Region Drilling

Geodetic System: US State Plane 1983
Datum: North American Datum 1983
Ellipsoid: GRS 1980
Zone: Colorado Northern Zone
System Datum: Mean Sea Level

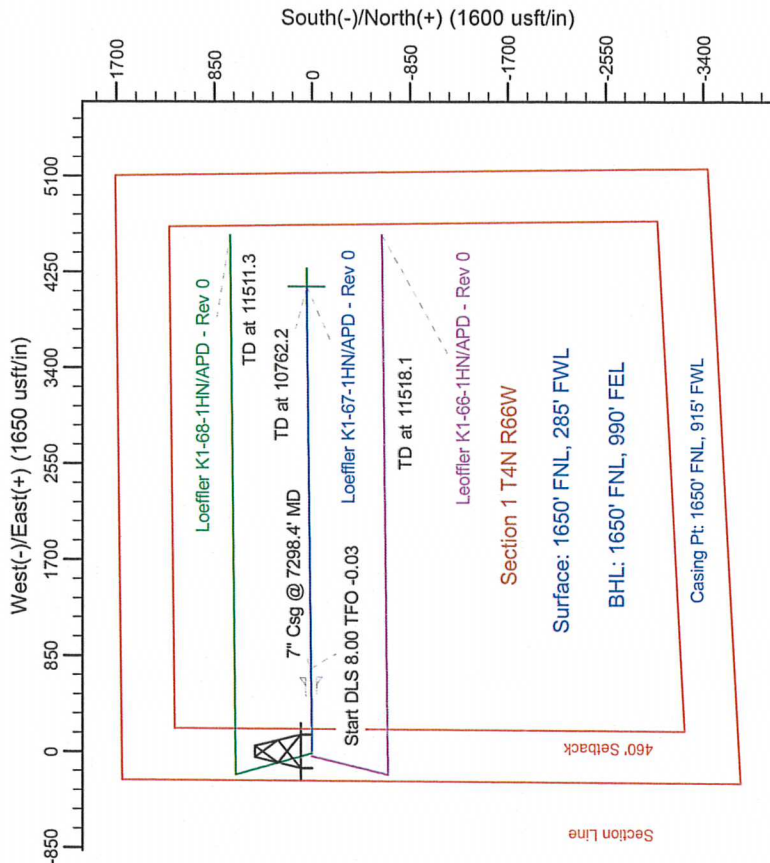
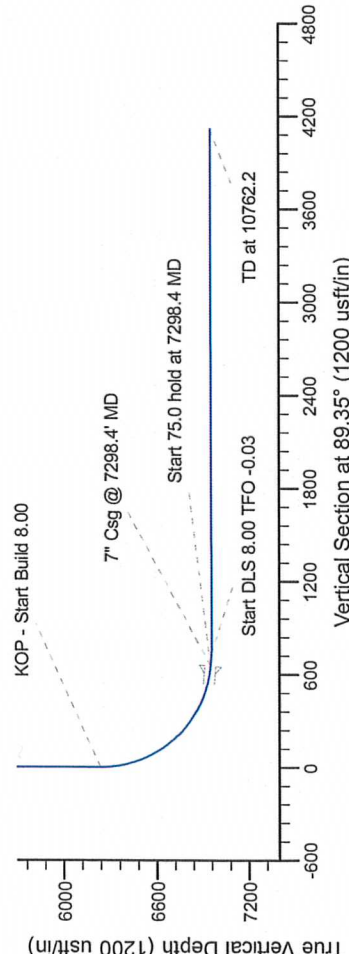
SECTION DETAILS

Sec	MD	Inc	Azi	TVD	+N/-S	+E/-W	Dleg	TFace	VSecl	Target
1	0.0	0.00	0.00	0.0	0.0	0.0	0.00	0.00	0.0	0.0
2	6235.9	0.00	0.00	6235.9	0.0	0.0	0.00	0.00	0.0	0.0
3	7298.4	85.00	89.35	6949.4	7.4	653.7	8.00	89.35	653.8	653.8
4	7373.4	85.00	89.35	6955.9	8.3	728.4	0.00	0.00	728.5	728.5
5	7437.2	90.10	89.35	6958.6	9.0	792.1	8.00	-0.03	792.2	792.2
6	10762.2	90.10	89.35	6952.8	46.8	4116.9	0.00	0.00	4117.2	4117.2

Loeffler K1-67-1HN BHL 1650'FNL, 990'FEL



Vertical Section at 89.35° (420 usft/in)



T G M

Azimuths to Grid North
True North: -0.49°
Magnetic North: 8.20°

Magnetic Field
Strength: 53051.4snT
Dip Angle: 66.99°
Date: 3/15/2012
Model: IGRF200510

WELL DETAILS: Loeffler K1-67-1HN

Ground Level: 4666.0
Northing: 1369045.91
Easting: 3213543.48
Latitude: 40.343900
Longitude: -104.733890

Plan: APD - Rev 0 (Loeffler K1-67-1HN/Original Drilling)

Created By: Carrie Willers Date: 11:57, March 16 2012

Checked: Date: _____

Reviewed: Date: _____

Approved: Date: _____