

DALEY LAND SURVEYING, INC.

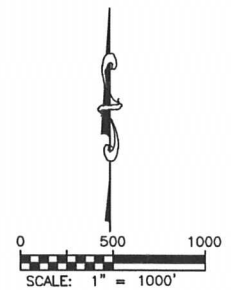
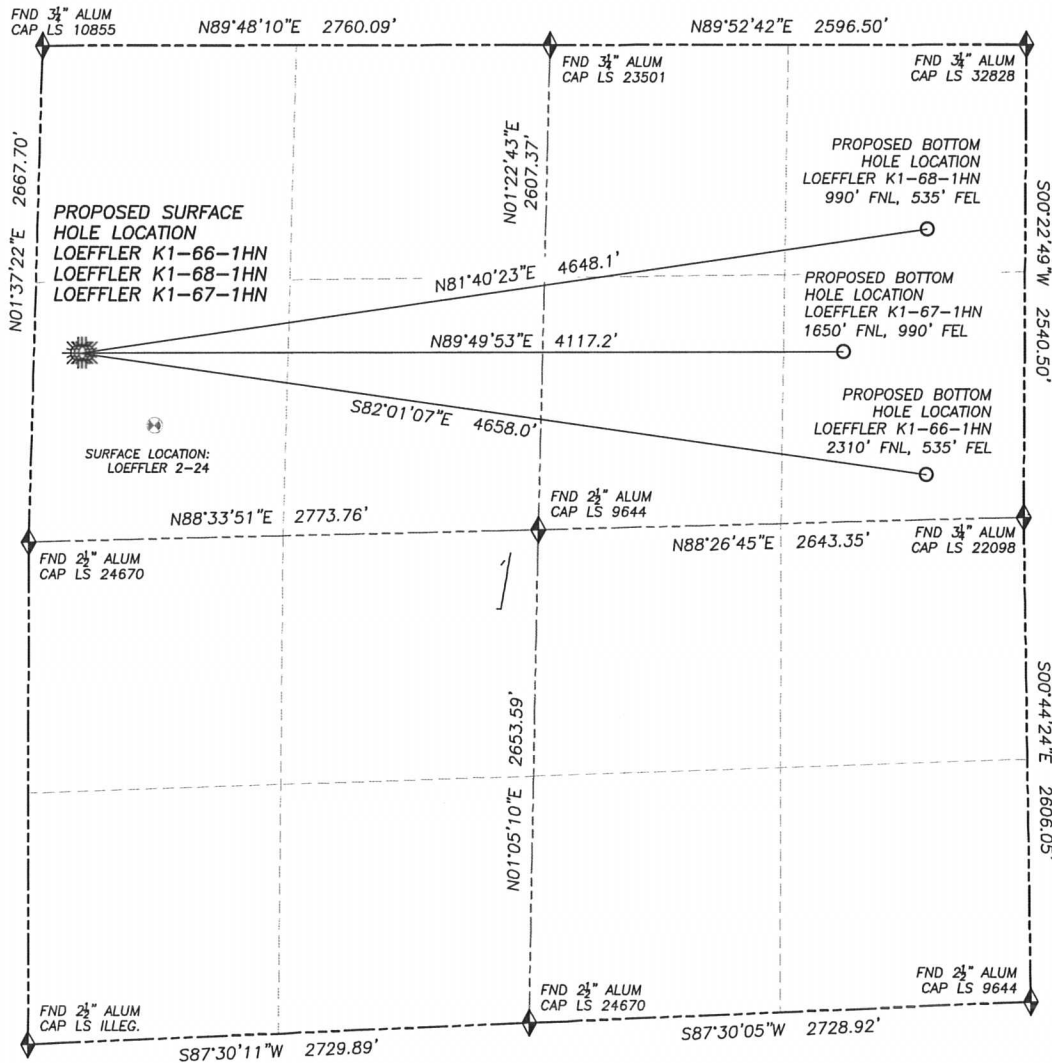
PARKER, CO. 80134

303 953 9841

MULTI-WELL PAD DIRECTIONAL LAYOUT

LOEFFLER K1-66-1HN, LOEFFLER K1-68-1HN & LOEFFLER K1-67-1HN

SECTION 1, TOWNSHIP 4 NORTH, RANGE 66 WEST OF THE 6TH PRINCIPAL MERIDIAN

**LEGEND**

- ◆ FOUND MONUMENT AS DESCRIBED
- ☀ PROPOSED WELL
- EXISTING WELL
- BOTTOM HOLE
- ⊗ ABANDONED WELL

	Well Name	Qtr-Qtr	Footage		Latitude	Longitude	Elevation	PDOP
SHL	LOEFFLER K1-66-1HN	SW NW 1	1650' FNL	240' FWL	40.34390	-104.73405	4667	1.8
BHL	LOEFFLER K1-66-1HN	SE NE 1	2310' FNL	535' FEL	40.34212	-104.71750		
SHL	LOEFFLER K1-68-1HN	SW NW 1	1650' FNL	263' FWL	40.34390	-104.73397	4667	1.7
BHL	LOEFFLER K1-68-1HN	NE NE 1	990' FNL	535' FEL	40.34574	-104.71747		
SHL	LOEFFLER K1-67-1HN	SW NW 1	1650' FNL	285' FWL	40.34390	-104.73389	4666	1.7
BHL	LOEFFLER K1-67-1HN	SE NE 1	1650' FNL	990' FEL	40.34393	-104.71912		

DALEY LAND SURVEYING, INC. PARKER, CO. 80134 303 953 9841

MULTI-WELL PAD LOCATION DRAWING
LOEFFLER K1-66-HN, LOEFFLER K1-68-1HN
& LOEFFLER K1-67-1HN

SECTION 1, TOWNSHIP 4 NORTH, RANGE 66 WEST OF THE 6TH PRINCIPAL MERIDIAN

