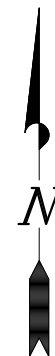
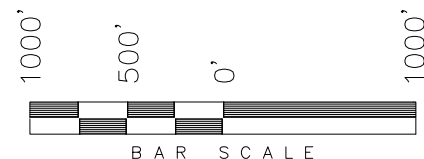


**T3N, R97W, 6th P.M.**

**ENDEAVOUR OPERATING CORPORATION**

WELL LOCATION, WILEY 32-3-97-1,  
LOCATED AS SHOWN IN THE NE 1/4 NW  
1/4 OF SECTION 32, T3N, R97W, 6TH  
P.M. RIO BLANCO COUNTY, COLORADO.



**NOTES:**

1. Well footages are measured at right angles to the Section Lines.
2. Bearings are based on Global Positioning Satellite observations.
3. G.P.S. Operator: S. Young, (PDOP) = 1.9

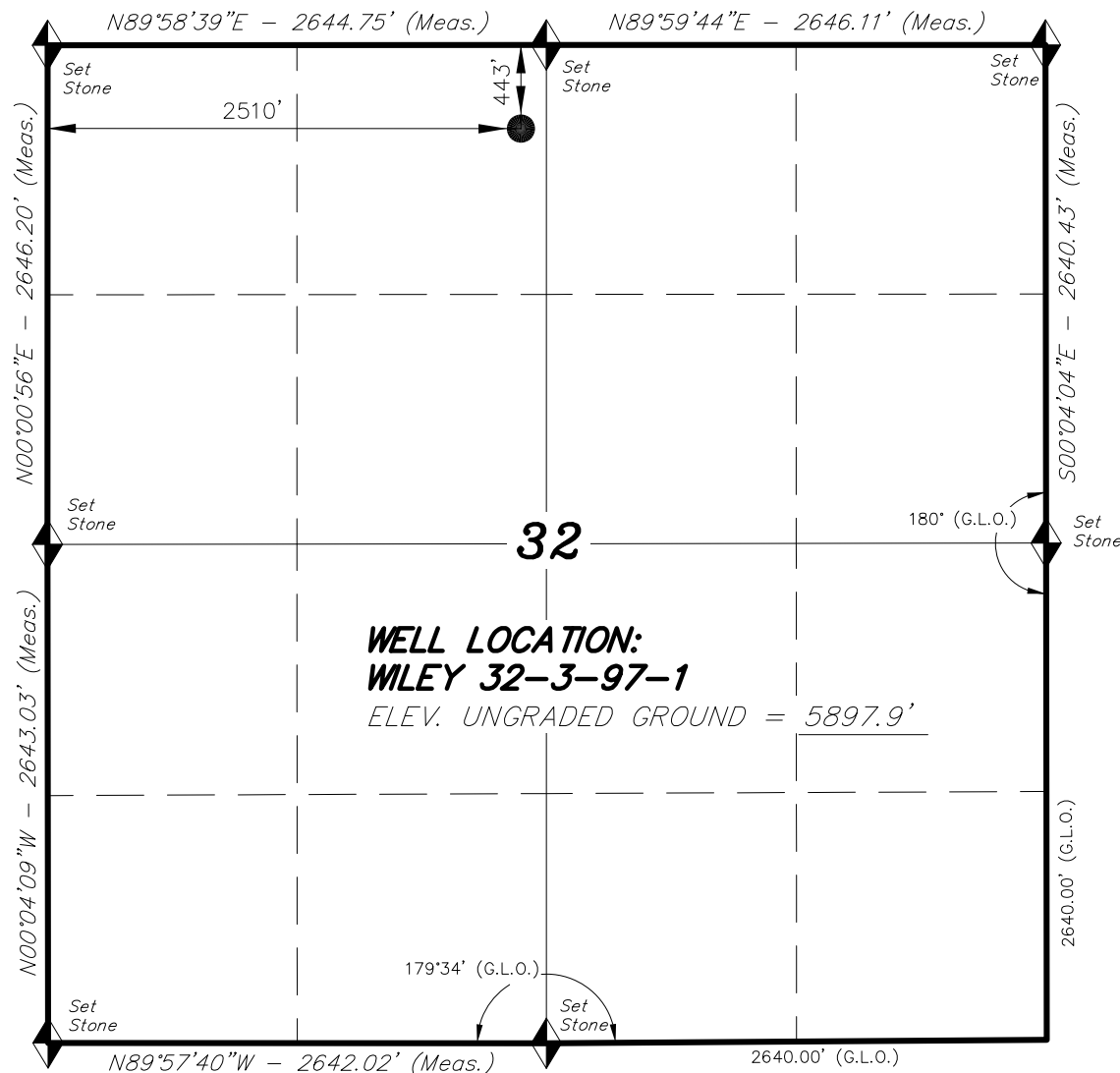
THIS IS TO CERTIFY THAT THE ABOVE PLAT WAS  
PREPARED FROM FIELD NOTES OF ACTUAL SURVEYS  
MADE BY ME OR UNDER MY SUPERVISION AND THAT  
THE SAME ARE TRUE AND CORRECT TO THE BEST  
OF MY KNOWLEDGE AND BELIEF.



**TRI STATE LAND SURVEYING & CONSULTING**

180 NORTH VERNAL AVE. - VERNAL, UTAH 84078  
(435) 781-2501

DATE SURVEYED: 05-11-12	SURVEYED BY: S.Y.	<b>SHEET 1a</b>
DATE DRAWN: 03-27-12	DRAWN BY: M.W.	
REVISED: 06-06-12 - M.W.	SCALE: 1" = 1000'	



◆ = SECTION CORNERS LOCATED

BASIS OF ELEV; U.S.G.S. 7-1/2 min QUAD  
(Smizer Gulch)

NAD 83 (SURFACE LOCATION)	
LATITUDE	= 40°11'28.00" (40.191511°)
LONGITUDE	= 108°18'09.94" (108.302761°)