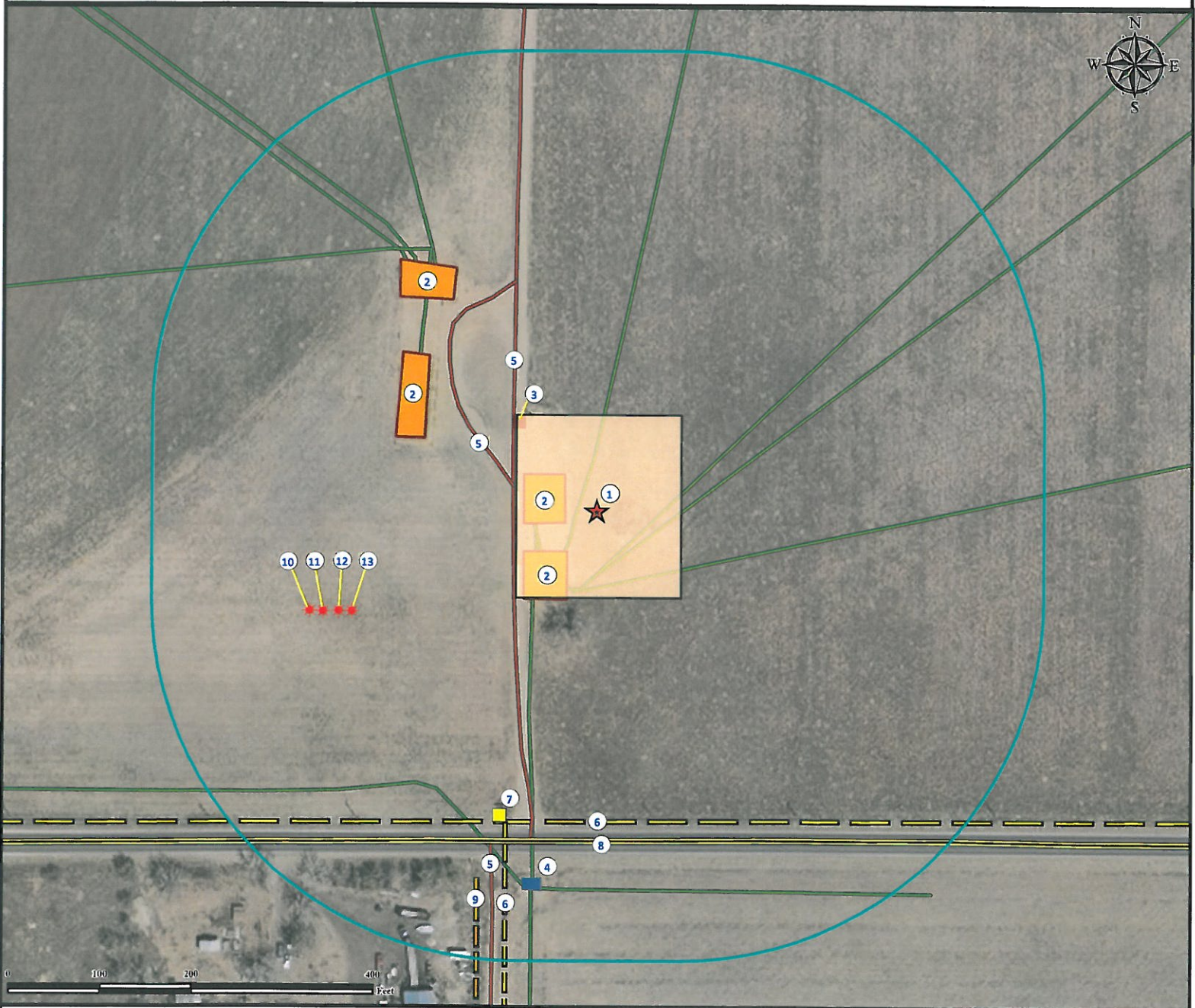


Location Drawing

VAN PORTFLIET 35C-W3HZ FACILITY

SW¼ SW¼ SECTION 10, TOWNSHIP 2 NORTH, RANGE 65 WEST OF THE 6TH PRINCIPAL MERIDIAN



- | | | |
|---|--|--|
| 1. Proposed VAN PORTFLIET 35C-W3HZ FACILITY. | 7. Power Box is ±351' SW. | 13. Existing Well THOMASON 38-9 is ±288' SW. |
| 2. Existing Facilities are ±35' W, ±55' SW, ±204' NW, and ±280' NW. | 8. County Road 22 is ±364' S. | |
| 3. Emission Control Device is ±129' NW. | 9. Fence is ±424' SW. | |
| 4. Oil & Gas Equipment is ±408' SW. | 10. Existing Well THOMASON 37-9 is ±331' SW. | |
| 5. Private Roads are ±91' W, ±120' NW, and ±400' SW. | 11. Existing Well THOMASON 16-9 is ±319' SW. | |
| 6. Power Lines are ±342' S and ±370' SW. | 12. Existing Well THOMASON 39-9 is ±302' SW. | |

Legend			
★ Reference Point	■ Power Box	□ 400' Radius	— Fence
★ Existing Well	■ Oil & Gas Equipment	— Private Road	— Power Line
■ ECD	■ Proposed Facility	— Underground Pipeline	— Public Road

Reference Location

** All Measurements are Made from
★ Reference Point **

Lat: 40.146978° Long: -104.659259° (NAD83)
Elevation: 4875 Feet
104' FWL, 365' FSL

PFS Petroleum Field Services *Use our resources to find yours!*
www.petro-fs.com
 (303) 928-7128

Field Date: 11/29/2011
 Drafting Date: 12/19/2011
 Drafter: KLM
 Checked By: BHF

Surface Use: Rangeland
 Data Sources:
 - Aerial courtesy of NAIP (2009)

Prepared for: **Anadarko** Petroleum Corporation
KERR-MCGEE OIL & GAS ONSHORE LP