

State of Colorado
Oil and Gas Conservation Commission
MECHANICAL INTEGRITY TEST



FOR OGC USE ONLY

1720 Lincoln Street, Suite 801, Denver, Colorado 80203 (303) 894-2100 Fax: (303) 894-2109

Fill out Part II of this form if well tested is a permitted or pending injection well. Send original plus one copy.
 1. Duration of the pressure test must be a minimum of 15 minutes.
 2. A pressure chart must accompany that report if the test was not witnessed by a OGC representative.
 3. For production wells, test pressure must be at a minimum of 300 psig.
 4. For injection wells, test pressure must be at 300 psig or minimum injection pressure, whichever is greater.
 5. A minimum 800 gal differential pressure must be maintained between the tubing and tubing/casing annulus pressure.
 6. Do not use this form if submitting under provisions of Rule 308.5 (1) B, or C.
 7. OGC representative must be present prior to the test.
 8. Pressure or bridge plug, etc., must be set within 250 feet of the perforated interval to be conducted a well test.

Complete the Attachment Checklist

Pressure Chart	Yes	0882
Pressure Report Log		
Test Report		
Temperature Survey		

OGCC Operator Number: 10084
 Name of Operator: Pioneer Natural Resources
 Address: 1401 17th Street, Suite 1200
 City: Denver State: CO Zip: 80202
 Contact Name and Telephone
 Judy Gillinsky
 No: (303) 878-2858
 Fax: (303) 294-1251
 APT Number: 05-071-08380 Field Name: Purgatoire River Field Number: 70832
 Well Name: PENAIL Number: 32-70
 Location (Dirct. Sec. Twp. Rng. Meridian): SW/4NE Sec 20-33S-R 66W

SHUT-IN PRODUCTION WELL INJECTION WELL Facility No.: _____
 Part I Pressure Test

5-Year UIC Test Test to Maintain SITA Status Reset Packer
 Verification of Repairs Tubing/Packer Leak Casing Leak Other (Specify) _____
 Describe Repairs: SB Cased Below Plug

NA - Not Applicable Wellbore Data at Time Test
 Injection/Producing Zone(s) Perforated Interval: NA Open Hole Interval: NA
VRHT-VERNESTO Perforated Interval: 1448 - 1690' NA Open Hole Interval: NA
 Casing Test NA
 Uses when perforations or open hole is isolated by bridge plug or cement plug
 Bridge Plug or Cement Plug Depth @ 1409'

Tubing Casing/Annulus Test NA
 Tubing Size: None Tubing Depth: None Top Packer Depth: None Multiple Packers? YES NO

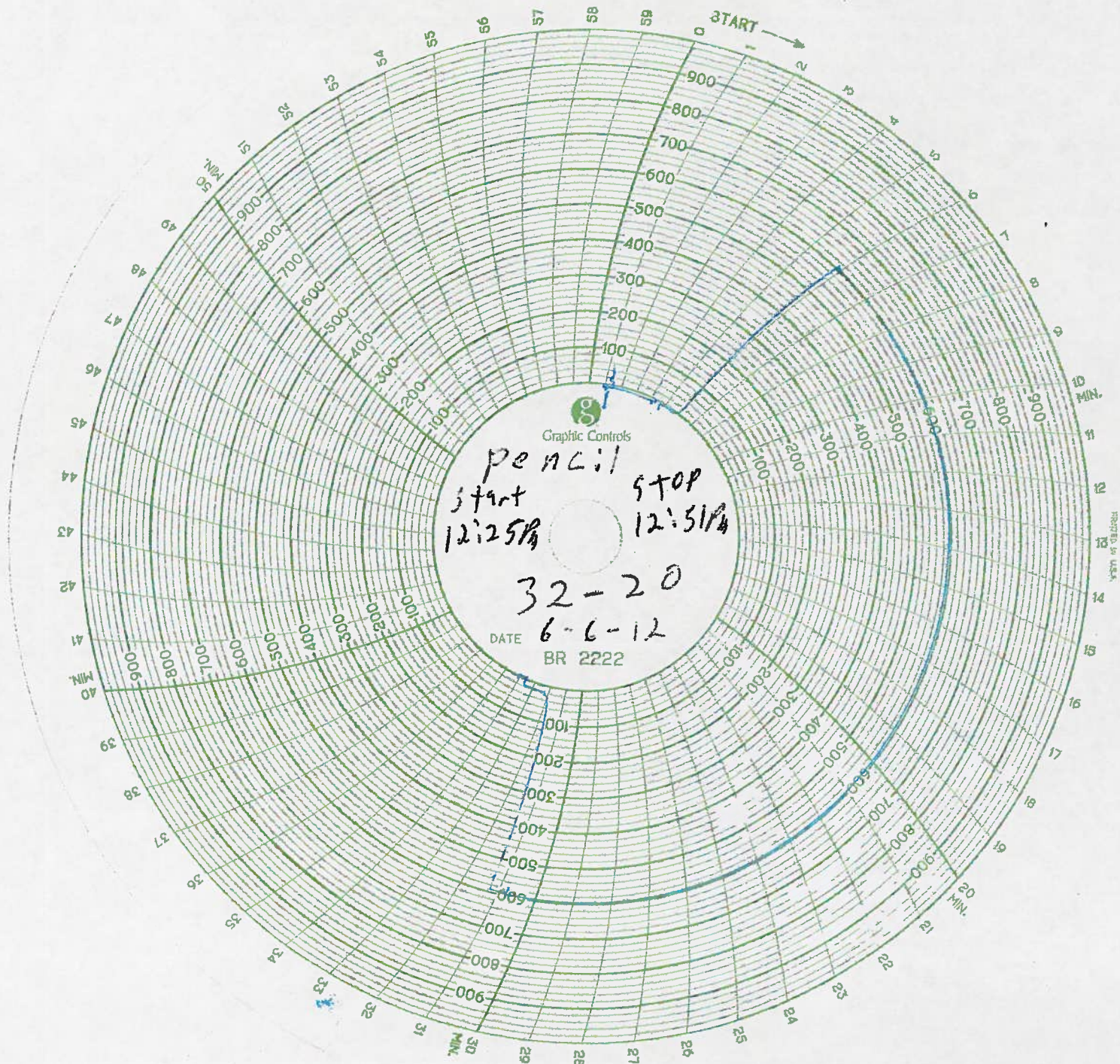
Test Data

Test Date	Well Status During Test	Date of Last Approved MIT	Casing Pressure Before Test	Initial Tubing Pressure	Final Tubing Pressure
<u>6/6/12</u>	<u>SI</u>				
Starting Casing Test Pressure	Casing Pressure - 5 Min.	Casing Pressure - 10 Min.	Final Casing Test Pressure	Pressure Loss or Gain During Test	
<u>600 psi</u>	<u>600 psi</u>	<u>600 psi</u>	<u>600 psi</u>	<u>0 psi</u>	

Test Witnessed by State Representative? YES NO
 OGCC Field Representative: _____

Part II Wellbore Channel Test Complete only if well is or will be an injection well.
 Indicate method used for cement integrity test, attach appropriate records, charts, or logs unless previously submitted.
 Tracer Survey CBL or Equivalent Temperature Survey
 Run Date: _____

I hereby certify that the statements made in this form are, to the best of my knowledge, true, correct, and complete.
 Print Name: Bryan Bradley
 Signature: [Signature] Title: Sr Production Technician Date: 6/17/12
 OGCC Approval: _____ Date: _____
 Conditions of Approval, if any: _____



Graphic Controls
pencil start 12:25 1/4 stop 12:51 1/4
32-20
DATE 6-6-12
BR 2222

MADE IN U.S.A.