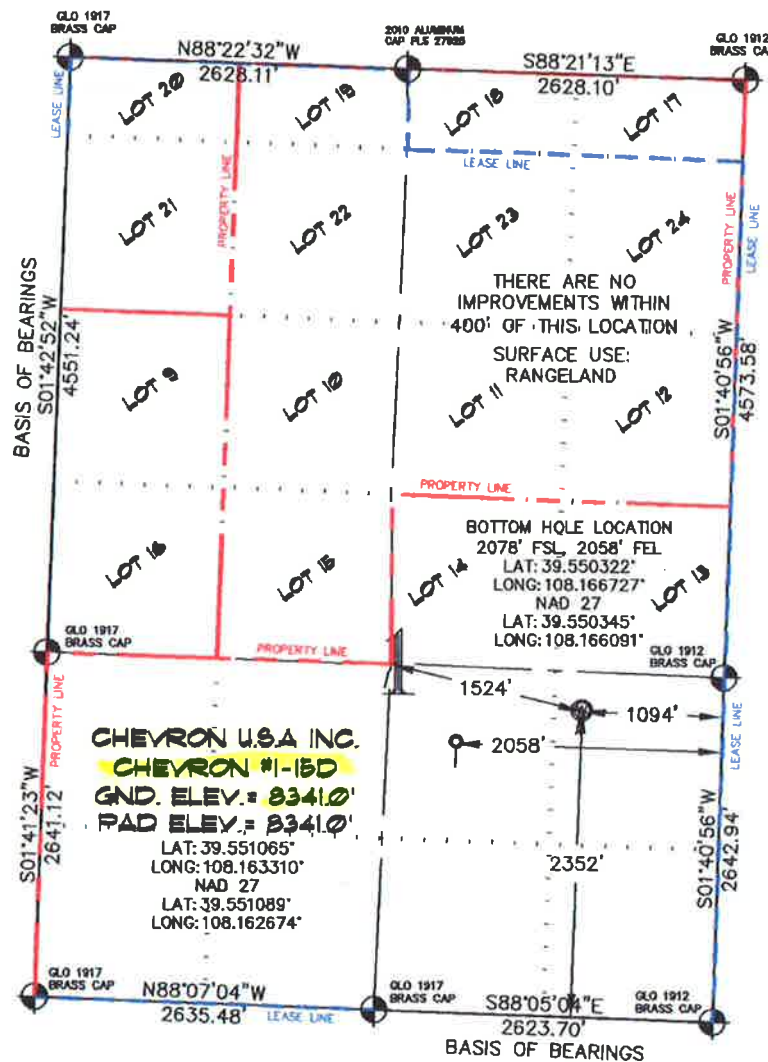


SEC. 1, T. 6 S., R. 97 W. OF THE 6TH P.M.

Chevron I-01-697  
Pad Location



**-LEGEND-**

- SECTION CORNER LOCATION  
BASED ON GLO RECORD  
INFORMATION
- ⊕ FIELD SURVEYED SECTION  
CORNER LOCATIONS
- ⊙ FIELD SURVEYED PAD  
LOCATION
- CALCULATED BOTTOM  
HOLE LOCATION

THIS WELL LOCATION PLAT WAS PREPARED FOR BERRY PETROLEUM COMPANY, TO LOCATE THE CHEVRON #1-15D WELL, 2352 FEET FROM THE SOUTH LINE AND 1094 FEET FROM THE EAST LINE IN THE NE 1/4 SE 1/4 OF SECTION 1, T. 6 S., R. 97 W. OF THE 6TH P.M. GARFIELD COUNTY, COLORADO.

**REFERENCE NOTES**

- 1) T. 6 S., R. 97 W., 6TH P.M. GLO PLAT.
- 2) U.S.G.S. QUAD: CIRLCE DOT GULCH, CO
- 3) ELEVATIONS BASED ON N.A.V.D. 1988
- 4) LATITUDES AND LONGITUDES ARE BASED ON NAD 83, COLORADO CENTRAL ZONE.
- 5) GPS OPERATOR ROBERT WOOD, OBSERVED A PDOP OF 2.5.
- 6) ALL GPS OBSERVATIONS ARE IN COMPLIANCE WITH COGCC RULE NO. 215.
- 7) SURFACE AND BOTTOM HOLE LOCATIONS ARE MEASURED 90° FROM SECTION LINES.

**SURVEYOR'S CERTIFICATE**

I, George R. Bauer, a Professional Land Surveyor in the State of Colorado do hereby certify that this Survey was made under my direct supervision, and that this Plat represents said Survey.



COLORADO P.L.S. 27925

VIEW: 1B



**CONSTRUCTION SURVEYS, INC.**  
0012 SUNRISE BLVD.  
SILT, CO 81652  
(970)876-5753

SURVEYED: 04/09/07	SCALE: 1" = 1400'
DRAFTED: 02/16/10	DWG: CHEVRON I-01-697
CHECKED: 02/19/10	SHEET: 1 of 11