

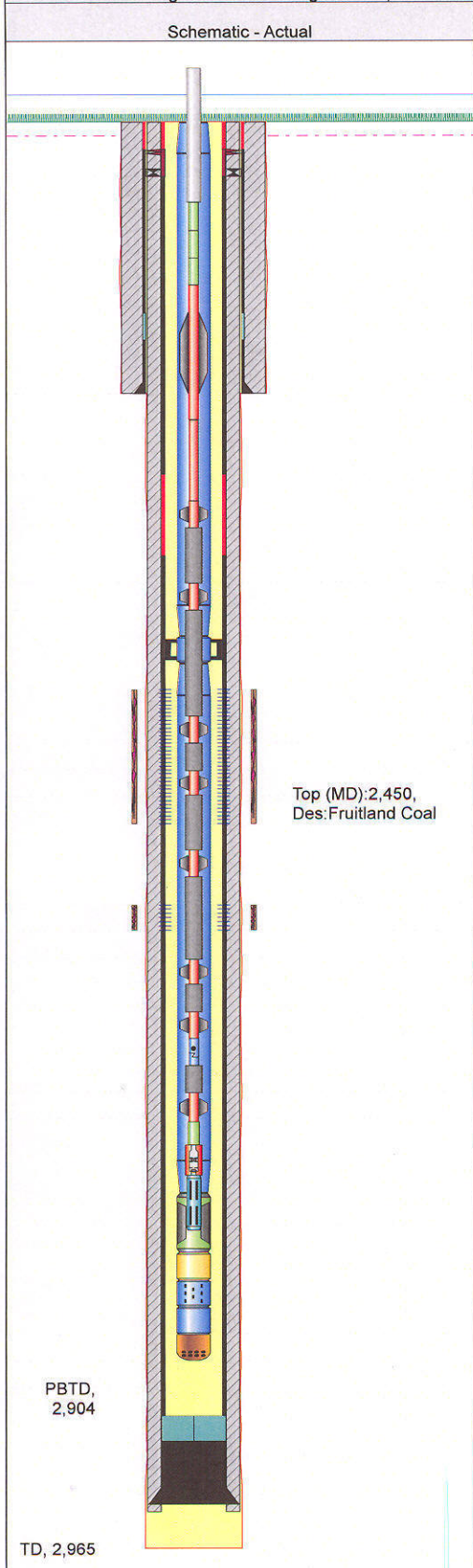


XTO - Wellbore Diagram

Well Name: Hocker 04-35

API/UWI 05067098530000	E/W Dist (ft) 1,210.0	E/W Ref FEL	N/S Dist (ft) 945.0	N/S Ref FNL	Location T33N-R07W-S35	Field Name Ignacio Blanco	County La Plata	State Colorado
Well Configuration Type Directional	XTO ID B 67742	Orig KB Elev (ft) 6,353.00	Gr Elev (ft) 6,342.00	KB-Grd (ft) 11.00	Spud Date 11/10/2011	PBTD (All) (ftKB) Original Hole - 2904.0	Total Depth (ftKB) 2,965.0	Method Of Production Beam

Well Config: Directional - Original Hole, 5/24/2012 3:59:23 PM



Zones		
Zone	Top (ftKB)	Btm (ftKB)
Fruitland Coal	2,450.0	2,596.0

Casing Strings					
Casing Description	OD (in)	Wt (lbs/ft)	String Grade	Top Connection	Set Depth (ftKB)
Surface	8 5/8	24.00	J-55	ST&C	290.1
Production	5 1/2	17.00	J-55	LT&C	2,950.9

Cement		
Description	Type	String
Surface Casing Cement	casing	Surface, 290.1ftKB
Comment Cmtd w/245 sks of Type G Reg @ 15.8 ppg, Yld 1.17, 5.0 gps, 49 bbls pumped total, w/25 bbls of good Cmt to Surface,		
Production Casing Cement	casing	Production, 2,950.9ftKB
Comment Ppd Lead w/275 sks PRB 2 cmt (mixed @ 12.5 ppg & 2.26 cu ft/sx yield), Tailed w/100 sks PRB 2 cmt (mixed @ 13.5 ppg & 1.82 cu ft/sx yield). Bumped plg @ 800 psig. Psig to 1,350 psig. Floats held. Circ 37 bbls cmt to surf.		

Perforations							
Date	Top (ftKB)	Btm (ftKB)	Shot Dens (shots/ft)	Hole Diameter (in)	Phasing (*)	Curr... Status	Zone
5/1/2012	2,450.0	2,550.0	3.0	0.540	60		Fruitland Coal
4/30/2012	2,592.0	2,596.0	4.0	0.540	90		Fruitland Coal

Tubing Strings		
Tubing Description	Run Date	Set Depth (ftKB)
Tubing - Production	5/11/2012	2,814.3

Tubing Components									
Item Description	Jts	Model	OD (in)	Wt (lbs/ft)	Gra...	Top Thread	Len (ft)	Top (ftKB)	Btm (ftKB)
Tubing	73	T&C Upset	2 7/8	6.50	J-55		2,415.54	11.0	2,426.5
Anchor/catcher	1		2 7/8				2.90	2,426.5	2,429.4
Tubing	8	T&C Upset	2 7/8	6.50	J-55		264.00	2,429.4	2,693.4
Pump Seating Nipple	1		2 7/8				1.10	2,693.4	2,694.5
Tubing Sub	1	T&C Upset	2 7/8	6.50	J-55		4.00	2,694.5	2,698.5
Desander	1		2 7/8				19.75	2,698.5	2,718.3
Tubing	2	T&C Upset	2 7/8	6.50	J-55		65.98	2,718.3	2,784.3
OPMA	1		2 7/8	6.50	J-55		30.00	2,784.3	2,814.3

Rods			
Rod Description	Run Date	String Length (ft)	Set Depth (ftKB)
Rod String	5/14/2012	2,701.70	2,694.0

Rod Components							
Item Description	Jts	Model	OD (in)	Grade	Len (ft)	Top (ftKB)	Btm (ftKB)
Polished Rod	1		1 1/4		26.00	-7.7	18.3
Rod Sub	1		7/8	D	4.00	18.3	22.3
Rod Sub	1		7/8	D	6.00	22.3	28.3
Rod Sub	1		7/8	D	8.00	28.3	36.3
Sucker Rod w/Molded Guides	11		7/8	D	275.00	36.3	311.3
Continuous Sucker Rod			13/...	620C	2,040.00	311.3	2,351.3
Stabilizer Rod	1		7/8	D	3.00	2,351.3	2,354.3
Sinker Bar	2		1 1/2	K	50.00	2,354.3	2,404.3
Stabilizer Rod	1		7/8	D	3.00	2,404.3	2,407.3
Sinker Bar	2		1 1/2	K	50.00	2,407.3	2,457.3
Stabilizer Rod	1		7/8	D	3.00	2,457.3	2,460.3
Sinker Bar	2		1 1/2	K	50.00	2,460.3	2,510.3

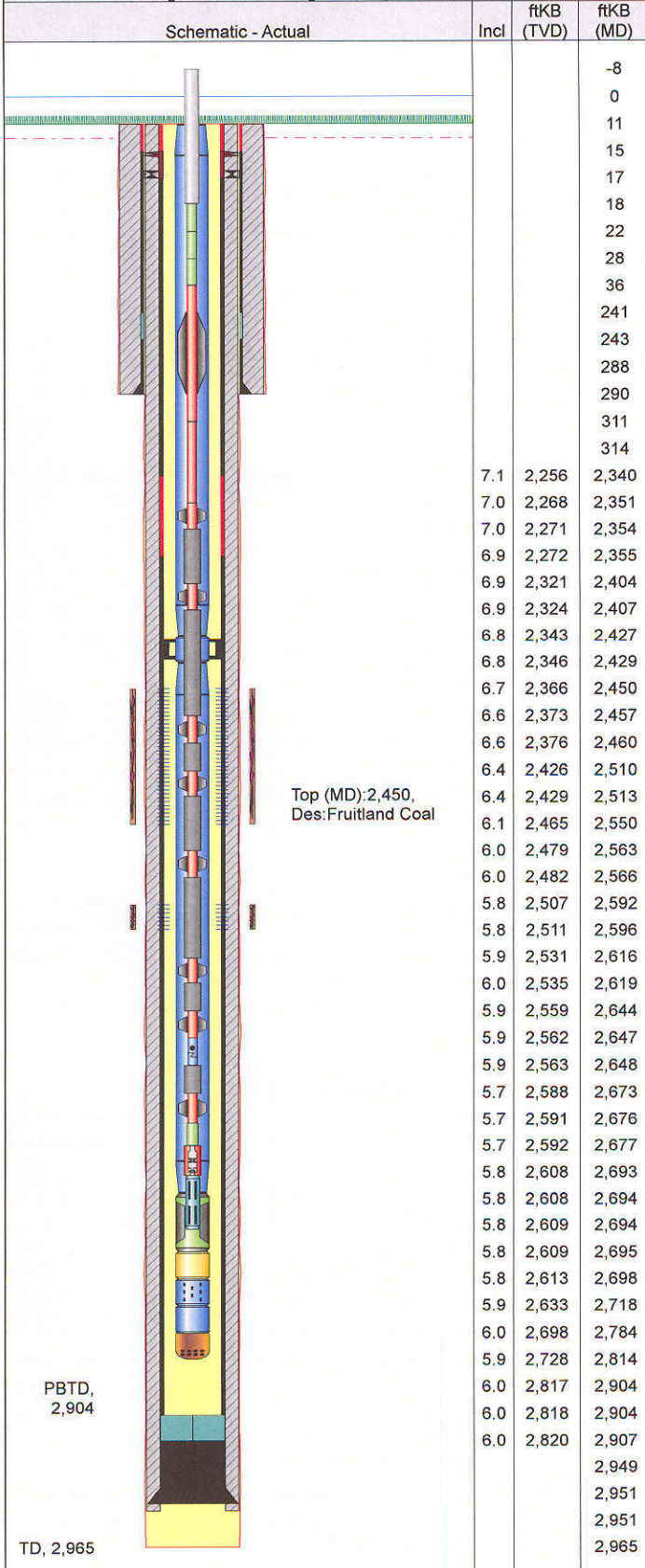


XTO - Wellbore Diagram

Well Name: Hocker 04-35

API/UWI 05067098530000	E/W Dist (ft) 1,210.0	E/W Ref FEL	N/S Dist (ft) 945.0	N/S Ref FNL	Location T33N-R07W-S35	Field Name Ignacio Blanco	County La Plata	State Colorado
Well Configuration Type Directional	XTO ID B 67742	Orig KB Elev (ft) 6,353.00	Gr Elev (ft) 6,342.00	KB-Grd (ft) 11.00	Spud Date 11/10/2011	PBTD (All) (ftKB) Original Hole - 2904.0	Total Depth (ftKB) 2,965.0	Method Of Production Beam

Well Config: Directional - Original Hole, 5/24/2012 3:59:23 PM



Rod Components									
Item Description	Jts	Model	OD (in)	Grade	Len (ft)	Top (ftKB)	Bottom (ftKB)		
Stabilizer Rod	1		7/8	D	3.00	2,510.3	2,513.3		
Sinker Bar	2		1 1/2	K	50.00	2,513.3	2,563.3		
Stabilizer Rod	1		7/8	D	3.00	2,563.3	2,566.3		
Sinker Bar	2		1 1/2	K	50.00	2,566.3	2,616.3		
Stabilizer Rod	1		7/8	D	3.00	2,616.3	2,619.3		
Sinker Bar	1		1 1/2	K	25.00	2,619.3	2,644.3		
Stabilizer Rod	1		7/8	D	3.00	2,644.3	2,647.3		
Shear Tool - 21K	1		7/8		0.70	2,647.3	2,648.0		
Sinker Bar	1		1 1/2	K	25.00	2,648.0	2,673.0		
Stabilizer Rod	1		7/8	D	3.00	2,673.0	2,676.0		
Lift Sub	1		1		1.00	2,676.0	2,677.0		
Rod Insert Pump	1	RWBC	1 1/2		16.00	2,677.0	2,693.0		
Strainer Nipple	1		1 1/4		1.00	2,693.0	2,694.0		

Stimulations & Treatments									
Frac Start Date	Top Perf (ft...)	Bottom Pe...	V (slurry) (...)	Total Prop...	AIR (b...	ATP (psi)	MTP (psi)	ISIP (psi)	
5/1/2012	2,592	2,596		43,270.0	22	2,936.0	4,60...		

Screened out on 4# sd stage									
Frac Start Date	Top Perf (ft...)	Bottom Pe...	V (slurry) (...)	Total Prop...	AIR (b...	ATP (psi)	MTP (psi)	ISIP (psi)	
5/1/2012	2,450	2,550		182,42...	59	2,936.0	4,20...		

Screened out on 5# sd stage									
Frac Start Date	Top Perf (ft...)	Bottom Pe...	V (slurry) (...)	Total Prop...	AIR (b...	ATP (psi)	MTP (psi)	ISIP (psi)	