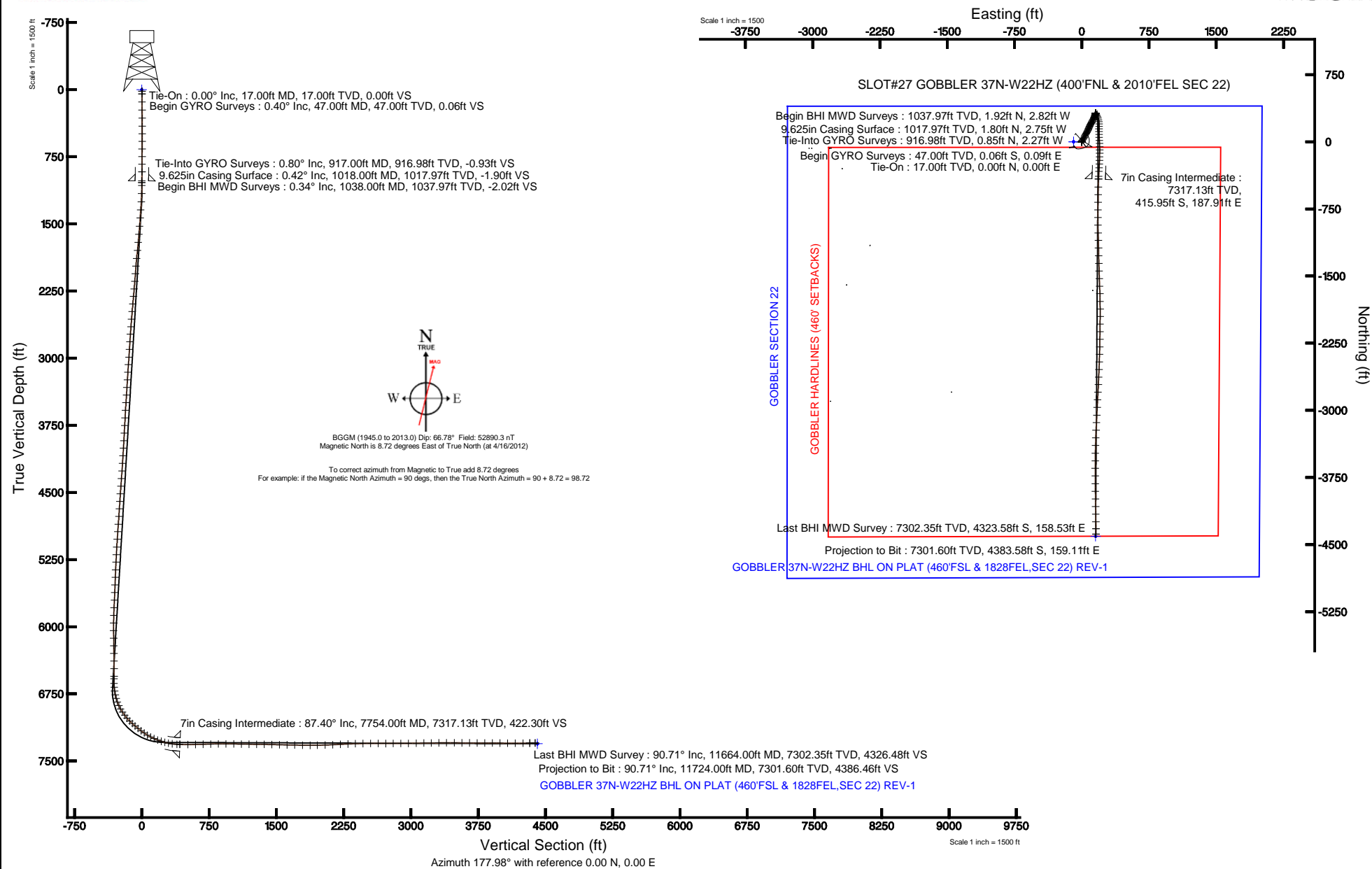


# KERR-MCGEE OIL & GAS ONSHORE LP

Location: COLORADO Slot: SLOT#27 GOBBLER 37N-W22HZ (400'FNL & 2010'FEL SEC 22)  
 Field: WELD COUNTY (KERR MCGEE) Well: GOBBLER 37N-W22HZ  
 Facility: SEC.22-T2N-R66W Wellbore: GOBBLER 37N-W22HZ PWB

Plot reference wellpath is GOBBLER 37N-W22HZ (REV-B.1) PWP	
True vertical depths are referenced to XTREME 6 (RKB)	Grid System: NAD83 / Lambert Colorado SP, Northern Zone (601), US feet
Measured depths are referenced to XTREME 6 (RKB)	North Reference: True north
XTREME 6 (RKB) to Mean Sea Level: 5070 feet	Scale: True distance
Mean Sea Level to Mud line (At Slot: SLOT#27 GOBBLER 37N-W22HZ (400'FNL & 2010'FEL SEC 22)): 0 feet	Depths are in feet
Coordinates are in feet referenced to Slot	Created by: wilsje02 on 5/22/2012





# Actual Wellpath Report

GOBBLER 37N-W22HZ AWP

Page 1 of 7



## REFERENCE WELLPATH IDENTIFICATION

Operator	KERR-MCGEE OIL & GAS ONSHORE LP	Slot	SLOT#27 GOBBLER 37N-W22HZ (400'FNL & 2010'FEL SEC 22)
Area	COLORADO	Well	GOBBLER 37N-W22HZ
Field	WELD COUNTY (KERR MCGEE)	Wellbore	GOBBLER 37N-W22HZ AWB
Facility	SEC.22-T2N-R66W		

## REPORT SETUP INFORMATION

Projection System	NAD83 / Lambert Colorado SP, Northern Zone (501), US feet	Software System	WellArchitect® 3.0.2
North Reference	True	User	Wilsjef02
Scale	0.999959	Report Generated	5/22/2012 at 09:56:41
Convergence at slot	0.48° East	Database/Source file	WellArchitectDB/GOBBLER_37N-W22HZ_AWB.xml

## WELLPATH LOCATION

	Local coordinates		Grid coordinates		Geographic coordinates	
	North[ft]	East[ft]	Easting[US ft]	Northing[US ft]	Latitude	Longitude
Slot Location	71.50	2813.10	3206613.28	1290993.29	40°07'47.305"N	104°45'39.906"W
Facility Reference Pt			3203800.98	1290898.68	40°07'46.600"N	104°46'16.122"W
Field Reference Pt			3197771.84	1268891.29	40°04'09.600"N	104°47'36.000"W

## WELLPATH DATUM

Calculation method	Minimum curvature	XTREME 6 (RKB) to Facility Vertical Datum	5070.00ft
Horizontal Reference Pt	Slot	XTREME 6 (RKB) to Mean Sea Level	5070.00ft
Vertical Reference Pt	XTREME 6 (RKB)	XTREME 6 (RKB) to Mud Line at Slot (SLOT#27 GOBBLER 37N-W22HZ (400'FNL & 2010'FEL SEC 22))	5070.00ft
MD Reference Pt	XTREME 6 (RKB)	Section Origin	N 0.00, E 0.00 ft
Field Vertical Reference	Mean Sea Level	Section Azimuth	177.98°



# Actual Wellpath Report

GOBBLER 37N-W22HZ AWP

Page 2 of 7



## REFERENCE WELLPATH IDENTIFICATION

Operator	KERR-MCGEE OIL & GAS ONSHORE LP	Slot	SLOT#27 GOBBLER 37N-W22HZ (400'FNL & 2010'FEL SEC 22)
Area	COLORADO	Well	GOBBLER 37N-W22HZ
Field	WELD COUNTY (KERR MCGEE)	Wellbore	GOBBLER 37N-W22HZ AWB
Facility	SEC.22-T2N-R66W		

## WELLPATH DATA (154 stations) † = interpolated/extrapolated station

MD [ft]	Inclination [°]	Azimuth [°]	TVD [ft]	Vert Sect [ft]	North [ft]	East [ft]	Latitude	Longitude	DLS [°/100ft]	Comments
0.00†	0.000	125.720	0.00	0.00	0.00	0.00	40°07'47.305"N	104°45'39.906"W	0.00	
17.00	0.000	125.720	17.00	0.00	0.00	0.00	40°07'47.305"N	104°45'39.906"W	0.00	Tie-On
47.00	0.400	125.720	47.00	0.06	-0.06	0.09	40°07'47.304"N	104°45'39.905"W	1.33	Begin GYRO Surveys
137.00	0.300	154.020	137.00	0.47	-0.46	0.44	40°07'47.300"N	104°45'39.900"W	0.22	
227.00	0.300	173.020	227.00	0.92	-0.90	0.58	40°07'47.296"N	104°45'39.899"W	0.11	
317.00	0.300	180.820	317.00	1.39	-1.37	0.60	40°07'47.291"N	104°45'39.898"W	0.05	
407.00	0.200	218.720	406.99	1.75	-1.73	0.50	40°07'47.288"N	104°45'39.900"W	0.21	
492.00	0.200	301.720	491.99	1.78	-1.77	0.28	40°07'47.288"N	104°45'39.900"W	0.31	
577.00	0.300	309.920	576.99	1.55	-1.55	-0.02	40°07'47.290"N	104°45'39.906"W	0.12	
662.00	0.400	306.020	661.99	1.21	-1.23	-0.43	40°07'47.293"N	104°45'39.912"W	0.12	
747.00	0.600	308.320	746.99	0.74	-0.78	-1.02	40°07'47.297"N	104°45'39.919"W	0.24	
832.00	0.700	321.820	831.98	0.04	-0.09	-1.69	40°07'47.304"N	104°45'39.928"W	0.21	
917.00	0.800	333.820	916.98	-0.93	0.85	-2.27	40°07'47.313"N	104°45'39.935"W	0.22	Tie-Into GYRO Surveys
1038.00	0.340	330.860	1037.97	-2.02	1.92	-2.82	40°07'47.324"N	104°45'39.942"W	0.38	Begin BHI MWD Surveys
1069.00	0.340	327.170	1068.97	-2.18	2.08	-2.91	40°07'47.326"N	104°45'39.943"W	0.07	
1160.00	2.680	28.190	1159.93	-4.25	4.18	-2.05	40°07'47.346"N	104°45'39.932"W	2.78	
1252.00	3.790	33.050	1251.79	-8.59	8.62	0.62	40°07'47.390"N	104°45'39.898"W	1.24	
1344.00	5.330	35.890	1343.49	-14.46	14.63	4.78	40°07'47.450"N	104°45'39.844"W	1.69	
1434.00	4.850	37.010	1433.14	-20.71	21.06	9.53	40°07'47.513"N	104°45'39.783"W	0.54	
1526.00	5.590	32.340	1524.75	-27.43	27.95	14.26	40°07'47.581"N	104°45'39.722"W	0.93	
1617.00	5.350	32.510	1615.34	-34.58	35.27	18.91	40°07'47.654"N	104°45'39.662"W	0.26	
1708.00	6.350	30.880	1705.87	-42.30	43.17	23.78	40°07'47.732"N	104°45'39.600"W	1.11	
1799.00	6.550	29.140	1796.29	-50.97	52.02	28.89	40°07'47.819"N	104°45'39.534"W	0.31	
1890.00	5.870	15.030	1886.76	-59.86	61.05	32.62	40°07'47.908"N	104°45'39.486"W	1.83	
1975.00	5.080	20.580	1971.37	-67.49	68.77	35.07	40°07'47.985"N	104°45'39.454"W	1.12	
2060.00	5.130	36.410	2056.04	-73.94	75.35	38.65	40°07'48.050"N	104°45'39.408"W	1.65	
2145.00	5.710	27.700	2140.66	-80.59	82.15	42.87	40°07'48.117"N	104°45'39.354"W	1.18	
2230.00	5.170	30.550	2225.28	-87.49	89.20	46.78	40°07'48.186"N	104°45'39.304"W	0.71	
2314.00	6.090	27.110	2308.87	-94.58	96.42	50.74	40°07'48.258"N	104°45'39.253"W	1.17	
2400.00	6.000	30.160	2394.39	-102.37	104.37	55.08	40°07'48.336"N	104°45'39.197"W	0.39	
2485.00	5.480	28.590	2478.97	-109.62	111.77	59.25	40°07'48.410"N	104°45'39.143"W	0.64	
2570.00	5.300	28.360	2563.59	-116.50	118.79	63.06	40°07'48.479"N	104°45'39.094"W	0.21	
2655.00	4.950	29.630	2648.25	-123.01	125.43	66.73	40°07'48.545"N	104°45'39.047"W	0.43	
2740.00	4.460	27.690	2732.96	-129.00	131.55	70.08	40°07'48.605"N	104°45'39.004"W	0.61	
2825.00	4.120	23.400	2817.73	-134.63	137.28	72.83	40°07'48.662"N	104°45'38.968"W	0.55	
2910.00	3.820	17.840	2902.52	-140.05	142.77	74.91	40°07'48.716"N	104°45'38.942"W	0.57	
2996.00	4.080	18.020	2988.32	-145.62	148.41	76.74	40°07'48.772"N	104°45'38.918"W	0.30	
3081.00	4.640	25.840	3073.07	-151.50	154.38	79.17	40°07'48.831"N	104°45'38.887"W	0.96	
3166.00	4.480	24.060	3157.80	-157.52	160.51	82.02	40°07'48.891"N	104°45'38.850"W	0.25	
3251.00	4.190	20.440	3242.56	-163.37	166.45	84.46	40°07'48.950"N	104°45'38.819"W	0.47	
3337.00	3.420	20.720	3328.37	-168.64	171.79	86.46	40°07'49.003"N	104°45'38.793"W	0.90	
3422.00	3.740	30.660	3413.21	-173.31	176.55	88.78	40°07'49.050"N	104°45'38.763"W	0.82	
3507.00	4.470	27.050	3497.99	-178.54	181.88	91.70	40°07'49.102"N	104°45'38.725"W	0.91	
3592.00	3.860	23.500	3582.76	-184.02	187.46	94.34	40°07'49.157"N	104°45'38.691"W	0.78	
3678.00	3.210	23.160	3668.60	-188.81	192.32	96.44	40°07'49.206"N	104°45'38.664"W	0.76	



# Actual Wellpath Report

GOBBLER 37N-W22HZ AWP

Page 3 of 7



## REFERENCE WELLPATH IDENTIFICATION

Operator	KERR-MCGEE OIL & GAS ONSHORE LP	Slot	SLOT#27 GOBBLER 37N-W22HZ (400'FNL & 2010'FEL SEC 22)
Area	COLORADO	Well	GOBBLER 37N-W22HZ
Field	WELD COUNTY (KERR MCGEE)	Wellbore	GOBBLER 37N-W22HZ AWB
Facility	SEC.22-T2N-R66W		

## WELLPATH DATA (154 stations)

MD [ft]	Inclination [°]	Azimuth [°]	TVD [ft]	Vert Sect [ft]	North [ft]	East [ft]	Latitude	Longitude	DLS [°/100ft]	Comments
3763.00	4.000	30.160	3753.43	-193.47	197.08	98.87	40°07'49.253"N	104°45'38.633"W	1.06	
3848.00	3.080	30.600	3838.27	-197.91	201.60	101.52	40°07'49.297"N	104°45'38.599"W	1.08	
3933.00	3.960	32.970	3923.11	-202.24	206.03	104.28	40°07'49.341"N	104°45'38.563"W	1.05	
4016.00	4.380	28.210	4005.89	-207.32	211.23	107.34	40°07'49.392"N	104°45'38.524"W	0.66	
4101.00	3.970	24.850	4090.66	-212.75	216.76	110.11	40°07'49.447"N	104°45'38.488"W	0.56	
4186.00	3.470	22.100	4175.48	-217.72	221.81	112.31	40°07'49.497"N	104°45'38.460"W	0.62	
4271.00	4.590	26.070	4260.27	-223.07	227.25	114.78	40°07'49.551"N	104°45'38.428"W	1.36	
4357.00	4.740	24.050	4345.98	-229.30	233.59	117.74	40°07'49.613"N	104°45'38.390"W	0.26	
4442.00	4.790	27.130	4430.69	-235.55	239.95	120.79	40°07'49.676"N	104°45'38.351"W	0.31	
4527.00	4.590	32.390	4515.41	-241.46	245.98	124.23	40°07'49.736"N	104°45'38.307"W	0.56	
4612.00	4.930	36.720	4600.11	-247.12	251.78	128.23	40°07'49.793"N	104°45'38.255"W	0.58	
4697.00	4.090	26.100	4684.85	-252.64	257.43	131.75	40°07'49.849"N	104°45'38.210"W	1.39	
4782.00	4.150	20.570	4769.63	-258.15	263.03	134.16	40°07'49.904"N	104°45'38.179"W	0.47	
4868.00	4.600	19.810	4855.38	-264.23	269.19	136.43	40°07'49.965"N	104°45'38.150"W	0.53	
4953.00	4.400	24.440	4940.12	-270.31	275.37	138.93	40°07'50.026"N	104°45'38.117"W	0.49	
5038.00	4.290	23.210	5024.88	-276.10	281.26	141.53	40°07'50.084"N	104°45'38.084"W	0.17	
5124.00	3.670	23.940	5110.67	-281.49	286.73	143.92	40°07'50.138"N	104°45'38.053"W	0.72	
5209.00	3.300	23.790	5195.51	-286.14	291.46	146.01	40°07'50.185"N	104°45'38.026"W	0.44	
5294.00	2.960	21.910	5280.38	-290.35	295.73	147.81	40°07'50.227"N	104°45'38.003"W	0.42	
5380.00	2.790	17.020	5366.28	-294.35	299.79	149.26	40°07'50.268"N	104°45'37.984"W	0.35	
5463.00	2.480	15.180	5449.19	-297.98	303.46	150.32	40°07'50.304"N	104°45'37.971"W	0.39	
5548.00	1.970	18.430	5534.12	-301.10	306.62	151.26	40°07'50.335"N	104°45'37.959"W	0.62	
5633.00	2.230	13.090	5619.07	-304.07	309.61	152.10	40°07'50.365"N	104°45'37.948"W	0.38	
5719.00	3.260	16.450	5704.97	-308.01	313.59	153.17	40°07'50.404"N	104°45'37.934"W	1.21	
5804.00	2.750	8.040	5789.85	-312.31	317.93	154.14	40°07'50.447"N	104°45'37.922"W	0.79	
5889.00	1.170	341.900	5874.80	-315.15	320.77	154.15	40°07'50.475"N	104°45'37.921"W	2.09	
5974.00	0.850	334.270	5959.78	-316.56	322.16	153.61	40°07'50.489"N	104°45'37.928"W	0.41	
6059.00	0.550	147.320	6044.78	-316.78	322.39	153.56	40°07'50.491"N	104°45'37.929"W	1.64	
6144.00	0.680	162.970	6129.78	-315.95	321.56	153.92	40°07'50.483"N	104°45'37.924"W	0.25	
6229.00	0.700	173.430	6214.77	-314.94	320.56	154.13	40°07'50.473"N	104°45'37.922"W	0.15	
6315.00	1.050	161.630	6300.76	-313.66	319.29	154.44	40°07'50.460"N	104°45'37.918"W	0.46	
6400.00	0.660	165.620	6385.75	-312.44	318.08	154.81	40°07'50.448"N	104°45'37.913"W	0.46	
6485.00	0.620	158.860	6470.75	-311.52	317.18	155.09	40°07'50.439"N	104°45'37.909"W	0.10	
6571.00	0.430	5.780	6556.75	-311.40	317.06	155.29	40°07'50.438"N	104°45'37.907"W	1.19	
6597.00	0.560	12.080	6582.74	-311.62	317.29	155.33	40°07'50.440"N	104°45'37.906"W	0.54	
6651.00	0.600	98.350	6636.74	-311.83	317.50	155.67	40°07'50.443"N	104°45'37.902"W	1.47	
6693.00	3.770	154.090	6678.71	-310.53	316.23	156.49	40°07'50.430"N	104°45'37.891"W	8.26	
6736.00	9.210	153.720	6721.42	-306.09	311.87	158.63	40°07'50.387"N	104°45'37.864"W	12.65	
6778.00	14.310	148.760	6762.52	-298.49	304.41	162.81	40°07'50.313"N	104°45'37.810"W	12.37	
6821.00	18.620	152.830	6803.75	-287.64	293.76	168.71	40°07'50.208"N	104°45'37.734"W	10.37	
6863.00	21.530	154.020	6843.20	-274.52	280.86	175.15	40°07'50.080"N	104°45'37.651"W	7.00	
6906.00	25.190	160.870	6882.67	-258.56	265.11	181.60	40°07'49.925"N	104°45'37.568"W	10.59	
6949.00	29.380	166.510	6920.88	-239.46	246.20	187.07	40°07'49.738"N	104°45'37.498"W	11.44	
6991.00	33.040	172.290	6956.81	-217.96	224.82	191.01	40°07'49.527"N	104°45'37.447"W	11.25	
7034.00	37.150	176.840	6991.99	-193.30	200.23	193.30	40°07'49.284"N	104°45'37.417"W	11.32	



# Actual Wellpath Report

GOBBLER 37N-W22HZ AWP

Page 4 of 7



## REFERENCE WELLPATH IDENTIFICATION

Operator	KERR-MCGEE OIL & GAS ONSHORE LP	Slot	SLOT#27 GOBBLER 37N-W22HZ (400'FNL & 2010'FEL SEC 22)
Area	COLORADO	Well	GOBBLER 37N-W22HZ
Field	WELD COUNTY (KERR MCGEE)	Wellbore	GOBBLER 37N-W22HZ AWB
Facility	SEC.22-T2N-R66W		

## WELLPATH DATA (154 stations) † = interpolated/extrapolated station

MD [ft]	Inclination [°]	Azimuth [°]	TVD [ft]	Vert Sect [ft]	North [ft]	East [ft]	Latitude	Longitude	DLS [°/100ft]	Comments
7076.00	41.200	181.480	7024.55	-166.80	173.72	193.64	40°07'49.022"N	104°45'37.413"W	11.90	
7118.00	44.110	181.180	7055.43	-138.39	145.27	192.98	40°07'48.741"N	104°45'37.422"W	6.95	
7159.00	47.820	178.900	7083.93	-108.94	115.80	192.98	40°07'48.449"N	104°45'37.422"W	9.89	
7202.00	49.800	178.250	7112.25	-76.59	83.46	193.79	40°07'48.130"N	104°45'37.411"W	4.74	
7244.00	51.520	177.860	7138.87	-44.11	51.00	194.89	40°07'47.809"N	104°45'37.397"W	4.16	
7287.00	53.680	176.550	7164.99	-9.95	16.88	196.56	40°07'47.472"N	104°45'37.375"W	5.58	
7329.00	55.360	176.760	7189.36	24.24	-17.26	198.56	40°07'47.134"N	104°45'37.350"W	4.02	
7372.00	58.150	178.630	7212.94	60.19	-53.19	199.99	40°07'46.779"N	104°45'37.331"W	7.44	
7414.00	62.240	179.490	7233.81	96.62	-89.62	200.59	40°07'46.419"N	104°45'37.324"W	9.90	
7456.00	66.280	181.590	7252.05	134.41	-127.44	200.22	40°07'46.046"N	104°45'37.328"W	10.62	
7499.00	69.270	181.250	7268.31	174.14	-167.23	199.23	40°07'45.652"N	104°45'37.341"W	6.99	
7541.00	72.270	182.440	7282.14	213.70	-206.86	197.95	40°07'45.261"N	104°45'37.358"W	7.63	
7583.00	74.520	182.810	7294.14	253.81	-247.06	196.11	40°07'44.863"N	104°45'37.381"W	5.42	
7626.00	79.550	182.620	7303.79	295.56	-288.91	194.13	40°07'44.450"N	104°45'37.407"W	11.71	
7668.00	82.780	182.730	7310.24	336.92	-330.36	192.19	40°07'44.040"N	104°45'37.432"W	7.69	
7722.00	86.310	183.090	7315.37	390.46	-384.04	189.46	40°07'43.510"N	104°45'37.467"W	6.57	
7754.00†	87.398	182.478	7317.13	422.30	-415.95	187.91	40°07'43.195"N	104°45'37.487"W	3.90	7" Casing Point
7844.00	90.460	180.760	7318.81	512.09	-505.88	185.37	40°07'42.306"N	104°45'37.520"W	3.90	
7929.00	91.570	180.890	7317.30	596.97	-590.86	184.14	40°07'41.466"N	104°45'37.535"W	1.31	
8014.00	91.170	180.650	7315.27	681.85	-675.83	183.00	40°07'40.626"N	104°45'37.550"W	0.55	
8099.00	92.090	180.560	7312.85	766.72	-760.79	182.10	40°07'39.787"N	104°45'37.562"W	1.09	
8184.00	90.670	180.720	7310.81	851.61	-845.76	181.15	40°07'38.947"N	104°45'37.574"W	1.68	
8269.00	89.630	179.040	7310.58	936.55	-930.75	181.33	40°07'38.107"N	104°45'37.572"W	2.32	
8355.00	88.740	178.460	7311.81	1022.54	-1016.72	183.21	40°07'37.258"N	104°45'37.547"W	1.24	
8440.00	88.810	178.130	7313.62	1107.52	-1101.66	185.74	40°07'36.418"N	104°45'37.515"W	0.40	
8525.00	89.390	178.980	7314.96	1192.50	-1186.62	187.88	40°07'35.579"N	104°45'37.487"W	1.21	
8611.00	89.790	178.810	7315.57	1278.49	-1272.61	189.54	40°07'34.729"N	104°45'37.466"W	0.51	
8696.00	88.520	178.370	7316.83	1363.47	-1357.57	191.63	40°07'33.889"N	104°45'37.439"W	1.58	
8781.00	88.680	178.330	7318.90	1448.44	-1442.51	194.08	40°07'33.050"N	104°45'37.408"W	0.19	
8866.00	88.770	177.950	7320.80	1533.42	-1527.44	196.83	40°07'32.211"N	104°45'37.372"W	0.46	
8951.00	88.830	177.960	7322.58	1618.40	-1612.37	199.87	40°07'31.371"N	104°45'37.333"W	0.07	
9036.00	88.580	178.000	7324.50	1703.38	-1697.30	202.86	40°07'30.532"N	104°45'37.295"W	0.30	
9122.00	89.230	179.490	7326.14	1789.36	-1783.26	204.75	40°07'29.683"N	104°45'37.270"W	1.89	
9207.00	89.260	179.410	7327.26	1874.32	-1868.24	205.56	40°07'28.843"N	104°45'37.260"W	0.10	
9289.00	91.290	180.500	7326.87	1956.27	-1950.24	205.63	40°07'28.033"N	104°45'37.259"W	2.81	
9375.00	92.150	180.870	7324.29	2042.13	-2036.19	204.60	40°07'27.183"N	104°45'37.272"W	1.09	
9460.00	92.740	180.720	7320.66	2126.95	-2121.11	203.42	40°07'26.344"N	104°45'37.287"W	0.72	
9545.00	93.190	180.440	7316.26	2211.75	-2205.99	202.56	40°07'25.505"N	104°45'37.298"W	0.62	
9630.00	92.250	181.300	7312.23	2296.54	-2290.88	201.27	40°07'24.666"N	104°45'37.315"W	1.50	
9714.00	91.480	181.780	7309.49	2380.34	-2374.80	199.01	40°07'23.837"N	104°45'37.344"W	1.08	
9799.00	91.260	182.050	7307.46	2465.11	-2459.73	196.18	40°07'22.998"N	104°45'37.381"W	0.41	
9884.00	89.850	182.250	7306.64	2549.88	-2544.67	192.99	40°07'22.158"N	104°45'37.422"W	1.68	
9968.00	89.480	182.370	7307.13	2633.64	-2628.60	189.60	40°07'21.329"N	104°45'37.465"W	0.46	
10053.00	90.340	182.860	7307.26	2718.36	-2713.51	185.72	40°07'20.490"N	104°45'37.515"W	1.16	
10138.00	90.250	183.070	7306.83	2803.04	-2798.39	181.33	40°07'19.651"N	104°45'37.572"W	0.27	



# Actual Wellpath Report

GOBBLER 37N-W22HZ AWP

Page 5 of 7



## REFERENCE WELLPATH IDENTIFICATION

Operator	KERR-MCGEE OIL & GAS ONSHORE LP	Slot	SLOT#27 GOBBLER 37N-W22HZ (400'FNL & 2010'FEL SEC 22)
Area	COLORADO	Well	GOBBLER 37N-W22HZ
Field	WELD COUNTY (KERR MCGEE)	Wellbore	GOBBLER 37N-W22HZ AWB
Facility	SEC.22-T2N-R66W		

## WELLPATH DATA (154 stations)

MD [ft]	Inclination [°]	Azimuth [°]	TVD [ft]	Vert Sect [ft]	North [ft]	East [ft]	Latitude	Longitude	DLS [°/100ft]	Comments
10223.00	90.400	182.720	7306.34	2887.73	-2883.28	177.03	40°07'18.812"N	104°45'37.627"W	0.45	
10308.00	90.740	182.920	7305.50	2972.42	-2968.18	172.85	40°07'17.973"N	104°45'37.681"W	0.46	
10394.00	91.070	182.830	7304.14	3058.10	-3054.06	168.54	40°07'17.124"N	104°45'37.736"W	0.40	
10479.00	91.690	183.140	7302.09	3142.75	-3138.92	164.11	40°07'16.286"N	104°45'37.793"W	0.82	
10564.00	90.430	182.050	7300.52	3227.45	-3223.81	160.27	40°07'15.447"N	104°45'37.843"W	1.96	
10649.00	90.370	181.790	7299.93	3312.25	-3308.76	157.42	40°07'14.607"N	104°45'37.880"W	0.31	
10734.00	90.400	182.080	7299.36	3397.05	-3393.71	154.55	40°07'13.768"N	104°45'37.917"W	0.34	
10820.00	89.410	181.140	7299.50	3482.87	-3479.67	152.13	40°07'12.918"N	104°45'37.948"W	1.59	
10905.00	89.780	180.470	7300.10	3567.77	-3564.66	150.94	40°07'12.079"N	104°45'37.963"W	0.90	
10990.00	89.970	180.180	7300.28	3652.70	-3649.66	150.46	40°07'11.239"N	104°45'37.969"W	0.41	
11075.00	89.320	179.380	7300.81	3737.65	-3734.66	150.78	40°07'10.399"N	104°45'37.965"W	1.21	
11161.00	89.780	179.600	7301.49	3823.62	-3820.65	151.55	40°07'09.549"N	104°45'37.955"W	0.59	
11246.00	90.150	179.180	7301.54	3908.59	-3905.65	152.45	40°07'08.709"N	104°45'37.944"W	0.66	
11331.00	88.770	178.960	7302.34	3993.57	-3990.63	153.83	40°07'07.869"N	104°45'37.926"W	1.64	
11416.00	90.000	179.250	7303.25	4078.55	-4075.61	155.16	40°07'07.029"N	104°45'37.909"W	1.49	
11501.00	89.820	179.010	7303.39	4163.53	-4160.60	156.45	40°07'06.189"N	104°45'37.892"W	0.35	
11587.00	90.490	179.320	7303.15	4249.51	-4246.59	157.70	40°07'05.340"N	104°45'37.876"W	0.86	
11664.00	90.710	179.450	7302.35	4326.48	-4323.58	158.53	40°07'04.579"N	104°45'37.865"W	0.33	Last BHI MWD Survey
11724.00	90.710	179.450	7301.60	4386.46	-4383.58	159.11	40°07'03.986"N	104°45'37.858"W	0.00	Projection to Bit

## HOLE & CASING SECTIONS - Ref Wellbore: GOBBLER 37N-W22HZ AWB Ref Wellpath: GOBBLER 37N-W22HZ AWP

String/Diameter	Start MD [ft]	End MD [ft]	Interval [ft]	Start TVD [ft]	End TVD [ft]	Start N/S [ft]	Start E/W [ft]	End N/S [ft]	End E/W [ft]
13.5in Open Hole	17.00	1018.00	1001.00	17.00	1017.97	0.00	0.00	1.80	-2.75
9.625in Casing Surface	17.00	1018.00	1001.00	17.00	1017.97	0.00	0.00	1.80	-2.75
8.75in Open Hole	1018.00	7764.00	6746.00	1017.97	7317.55	1.80	-2.75	-425.93	187.49
7in Casing Intermediate	17.00	7754.00	7737.00	17.00	7317.13	0.00	0.00	-415.95	187.91
6.125in Open Hole	7754.00	11724.00	3970.00	7317.13	7301.60	-415.95	187.91	-4383.58	159.11



# Actual Wellpath Report

GOBBLER 37N-W22HZ AWP

Page 6 of 7



## REFERENCE WELLPATH IDENTIFICATION

Operator	KERR-MCGEE OIL & GAS ONSHORE LP	Slot	SLOT#27 GOBBLER 37N-W22HZ (400'FNL & 2010'FEL SEC 22)
Area	COLORADO	Well	GOBBLER 37N-W22HZ
Field	WELD COUNTY (KERR MCGEE)	Wellbore	GOBBLER 37N-W22HZ AWB
Facility	SEC.22-T2N-R66W		

## TARGETS

Name	MD [ft]	TVD [ft]	North [ft]	East [ft]	Grid East [US ft]	Grid North [US ft]	Latitude	Longitude	Shape
GOBBLER SECTION 22		0.00	0.02	-90.04	3206523.24	1290992.56	40°07'47.305"N	104°45'41.065"W	polygon
GOBBLER 37N-W22HZ BHL ON PLAT (460'FSL & 1828FEL,SEC 22) REV-1		7310.00	-4408.67	155.22	3206805.22	1286586.25	40°07'03.738"N	104°45'37.908"W	point
GOBBLER HARDLINES (460' SETBACKS)		7400.00	0.02	-90.04	3206523.24	1290992.56	40°07'47.305"N	104°45'41.065"W	polygon

## WELLPATH COMPOSITION - Ref Wellbore: GOBBLER 37N-W22HZ AWB Ref Wellpath: GOBBLER 37N-W22HZ AWP

Start MD [ft]	End MD [ft]	Positional Uncertainty Model	Log Name/Comment	Wellbore
17.00	917.00	Gyrodata standard - Continuous gyro	GYRODATA SURVEYS <47-917>	GOBBLER 37N-W22HZ AWB
917.00	7722.00	NaviTrak (Standard)	BHI MWD SURVEYS 8 3/4" HOLE <1038-7722>	GOBBLER 37N-W22HZ AWB
7722.00	11664.00	OnTrak (Standard)	BHI MWD SURVEYS 6 1/8" HOLE <7844-11664>	GOBBLER 37N-W22HZ AWB
11664.00	11724.00	Blind Drilling (std)	Projection to bit	GOBBLER 37N-W22HZ AWB



# Actual Wellpath Report

GOBBLER 37N-W22HZ AWP

Page 7 of 7



## REFERENCE WELLPATH IDENTIFICATION

Operator	KERR-MCGEE OIL & GAS ONSHORE LP	Slot	SLOT#27 GOBBLER 37N-W22HZ (400'FNL & 2010'FEL SEC 22)
Area	COLORADO	Well	GOBBLER 37N-W22HZ
Field	WELD COUNTY (KERR MCGEE)	Wellbore	GOBBLER 37N-W22HZ AWB
Facility	SEC.22-T2N-R66W		

## WELLPATH COMMENTS

MD [ft]	Inclination [°]	Azimuth [°]	TVD [ft]	Comment
17.00	0.000	125.720	17.00	Tie-On
47.00	0.400	125.720	47.00	Begin GYRO Surveys
917.00	0.800	333.820	916.98	Tie-Into GYRO Surveys
1038.00	0.340	330.860	1037.97	Begin BHI MWD Surveys
7754.00	87.398	182.478	7317.13	7" Casing Point
11664.00	90.710	179.450	7302.35	Last BHI MWD Survey
11724.00	90.710	179.450	7301.60	Projection to Bit