

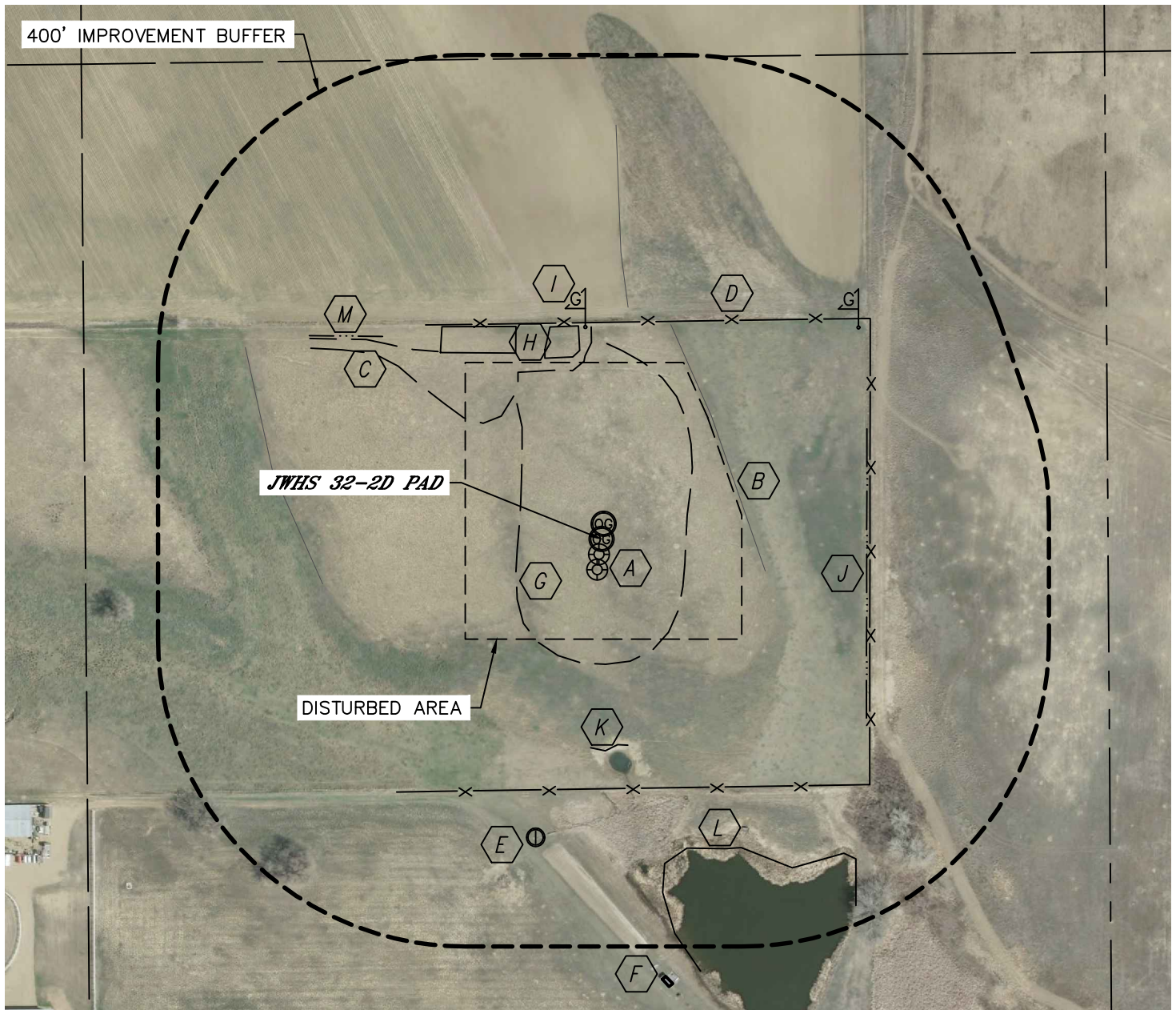


Lat40°, Inc. 1635 Foxtrail Drive, Suite 325 Loveland, CO 970-776-3321

## LOCATION DRAWING

JWHS 32-2D PAD

SECTION: 2  
TOWNSHIP: 3N  
RANGE: 68W



IMPROVEMENTS:  
(MEASURED FROM PROPOSED JWHS 32-2D WELL LOCATION)

- |  |  |
|--|--|
| <b>A</b> EX. O&G WELL 20' & 40' S                      | <b>G</b> EDGE OF PAD 110' E, 163' S, 108' W              |
| <b>B</b> EDGE OF FIELD/DRAW 188' NE,<br>304' N, 368' W | <b>H</b> PRODUCTION EQUIPMENT (APOLLO)<br>240' & 266' NW |
| <b>C</b> ACCESS ROAD 206' NW                           | <b>I</b> GAS LINE MARKER 277' N, 433' NE                 |
| <b>D</b> FENCE 282' N, 325' S & 350' E                 | <b>J</b> DITCH 346' E                                    |
| <b>E</b> IRRIGATION PUMP HOUSE 398' SW                 | <b>K</b> LOW AREA 269' S                                 |
| <b>F</b> SHED 575' SE                                  | <b>L</b> POND 417' SE                                    |
|  | <b>M</b> BARROW DITCH 389' NW                            |

NEAREST: BUILDING 795' SW, PUBLIC ROAD 1990' W (INTERSTATE I-25 FRONTAGE ROAD),  
ABOVE GROUND UTILITY 1954' W, RAILROAD 3950' SE, PROPERTY LINE 282' N

DATE: 5/31/2012  
PROJECT#: 2011113

