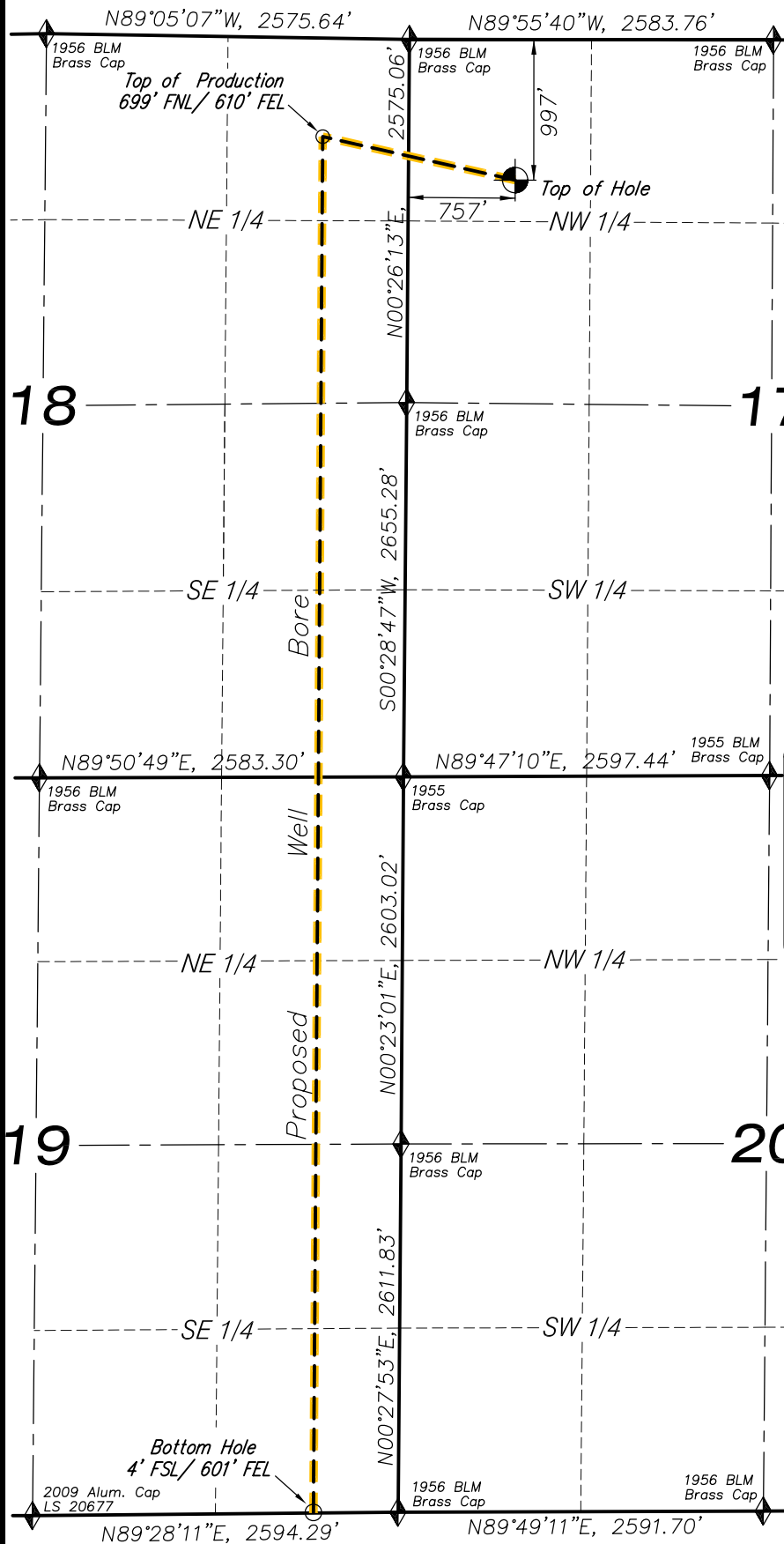


T9S, R98W, 6TH P.M.



LEGEND

- ◆ SECTION CORNER LOCATED
- SURFACE LOCATION
- BOTTOM HOLE LOCATION
- RECORD LOCATION OF CORNER

CERTIFICATE OF SURVEYOR

I, TED TAGGART OF FRUITA, COLORADO HEREBY CERTIFY THAT THIS MAP WAS MADE FROM NOTES TAKEN DURING AN ACTUAL SURVEY MADE BY ME OR UNDER MY DIRECTION FOR ENCANA OIL & GAS (USA) INC. AND THAT THIS LOCATION HAS BEEN STAKED ON THE GROUND AS SHOWN HEREON.



DHS1C-19 (D17 998) WELL

(WELLHEAD LOCATION) NAD 83
 LATITUDE = 39.277433° N (39°16'38.76000")
 LONGITUDE = 108.359089° W (108°21'32.72000")
 (BOTTOM HOLE LOCATION) NAD 83
 LATITUDE = 39.251500° N (39°15'05.400000")
 LONGITUDE = 108.364144° W (108°21'50.92000")
 ELEV. UNGRADED GROUND= 5774'

NOTES

1. WELL FOOTAGES ARE MEASURED AT RIGHT ANGLES TO SECTION LINES.
2. BASIS OF BEARING: GEODETIC- BASED ON GPS OBSERVATIONS.
3. ELEVATIONS BASED ON GPS OBSERVATIONS, NAVD 88 (GEOID 03), POST PROCESSED USING NGS OPUS.
4. SEE ADDENDUM TO LEGAL PLAT (SHEET 1g) FOR VISIBLE IMPROVEMENTS WITHIN 400 FEET OF THE PROPOSED OIL & GAS LOCATION.
5. GPS PROCEDURES COMPLY WITH COGCC RULE NO. 215. PDOP READING: 1.9 GPS OPERATOR: JAY TAGGART

MAP to ACCOMPANY
 APPLICATION for PERMIT to DRILL
 Encana Oil & Gas (USA) Inc.
DHS1C-19 (D17 998) Well

NW1/4 NW1/4, SECTION 17
 T9S, R98W, 6th P.M.
 MESA COUNTY, COLORADO

Location Plat

Scale: 1" = 1200'

SHEET

Project No. 12-04-17
 Date Drawn: 5/18/12

Date Surveyed: 3/22/12
 Latest Revision Date: 5/23/12

1a
 OF 10



906 Main Street
 Evanston, Wyoming 82930
 Phone No. (307) 789-4545