
OXY GRAND JUNCTION EBUSINESS

**TEXACO-STRANER 26-32
BRUSH CREEK
Mesa County , Colorado**

Plug to Abandon Service

02-Jun-2012

Job Site Documents

The Road to Excellence Starts with Safety

Sold To #: 344034	Ship To #: 2928940	Quote #:	Sales Order #: 9560822
Customer: OXY GRAND JUNCTION EBUSINESS		Customer Rep: VINCENT, ROBERT	
Well Name: TEXACO-STRANER	Well #: 26-32	API/UWI #: 05-077-08444	
Field: BRUSH CREEK	City (SAP): COLLBRAN	County/Parish: Mesa	State: Colorado
Lat: N 39.251 deg. OR N 39 deg. 15 min. 3.996 secs.		Long: E 107.846 deg. OR E 107 deg. 50 min. 44.16 secs.	
Contractor: WORKOVER	Rig/Platform Name/Num: WORKOVER		
Job Purpose: Plug to Abandon Service			
Well Type: Development Well	Job Type: Plug to Abandon Service		
Sales Person: PRUETT, BRADLEY	Srvc Supervisor: KUKUS, CHRISTOPHER	MBU ID Emp #: 413952	

Job Personnel

HES Emp Name	Exp Hrs	Emp #	HES Emp Name	Exp Hrs	Emp #	HES Emp Name	Exp Hrs	Emp #
HYDE, DUSTIN C	24	453940	KUKUS, CHRISTOPHER A	24	413952	MILLER II, MATTHEW Reginald	24	425164
SMITH, DUSTIN Michael	24	418015	JAMES BLANCHETTE	24	371360			

Equipment

HES Unit #	Distance-1 way	HES Unit #	Distance-1 way	HES Unit #	Distance-1 way	HES Unit #	Distance-1 way
10025118	70 mile	10565341	70 mile	10872429	70 mile	10973571	70 mile
11259883	70 mile	11360881	70 mile	11808847	70 mile		

Job Hours

Date	On Location Hours	Operating Hours	Date	On Location Hours	Operating Hours	Date	On Location Hours	Operating Hours
06/01/2012	16	5	06/02/2012	8	4			
TOTAL		<i>Total is the sum of each column separately</i>						

Job

Job Times

Formation Name	Date	Time	Time Zone
Formation Depth (MD) Top	Bottom	Called Out	31 - May - 2012 23:00 MST
Form Type	BHST	On Location	01 - Jun - 2012 03:00 MST
Job depth MD	4590. ft	Job Depth TVD	4590. ft
Water Depth		Job Started	01 - Jun - 2012 13:19 MST
Perforation Depth (MD) From	To	Job Completed	02 - Jun - 2012 13:00 MST
		Departed Loc	02 - Jun - 2012 15:00 MST

Well Data

Description	New / Used	Max pressure psig	Size in	ID in	Weight lbm/ft	Thread	Grade	Top MD ft	Bottom MD ft	Top TVD ft	Bottom TVD ft
Sales/Rental/3rd Party (HES)											

Sales/Rental/3rd Party (HES)

Description	Qty	Qty uom	Depth	Supplier
R/A DENSOMETER W/CHART RECORDER, /JOB, ZI	1	JOB		
ADC (AUTO DENSITY CTRL) SYS, /JOB, ZI	1	JOB		
PORT. DATA ACQUIS. W/OPTICEM RT W/HES	1	EA		

Tools and Accessories

Type	Size	Qty	Make	Depth	Type	Size	Qty	Make	Depth	Type	Size	Qty	Make
Guide Shoe					Packer					Top Plug			
Float Shoe					Bridge Plug	4.5	1		470	Bottom Plug			
Float Collar					Retainer	4.5	2		1470	SSR plug set			
Insert Float									660	Plug Container			
Stage Tool										Centralizers			

Miscellaneous Materials

Gelling Agt	Conc	Surfactant	Conc	Acid Type	Qty	Conc %
Treatment Fld	Conc	Inhibitor	Conc	Sand Type	Size	Qty

Fluid Data

Stage/Plug #: 1

Fluid #	Stage Type	Fluid Name	Qty	Qty uom	Mixing Density lbm/gal	Yield ft ³ /sk	Mix Fluid Gal/sk	Rate bbl/min	Total Mix Fluid Gal/sk
1	Water Spacer		3.00	bbl	8.33	.0	.0	1	
2	PlugCem	PLUGCEM (TM) SYSTEM (452969)	376	sacks	15.8	1.15	5.0	1.5	5.0
	5 Gal	FRESH WATER							
3	Displacement		16.3	bbl	8.33	.0	.0	1.5	
Calculated Values		Pressures			Volumes				
Displacement	16.3	Shut In: Instant		Lost Returns		Cement Slurry	77	Pad	
Top Of Cement	SURFACE	5 Min		Cement Returns	10	Actual Displacement	16.3	Treatment	
Frac Gradient		15 Min		Spacers	3	Load and Breakdown		Total Job	
Rates									
Circulating		Mixing	1.5	Displacement	1.5	Avg. Job		1.5	
Cement Left In Pipe	Amount 0 ft	Reason	Shoe Joint						
Frac Ring # 1 @	ID	Frac ring # 2 @	ID	Frac Ring # 3 @	ID	Frac Ring # 4 @	ID		
The Information Stated Herein Is Correct				Customer Representative Signature					

The Road to Excellence Starts with Safety

Sold To #: 344034	Ship To #: 2928940	Quote #:	Sales Order #: 9560822
Customer: OXY GRAND JUNCTION EBUSINESS		Customer Rep: VINCENT, ROBERT	
Well Name: TEXACO-STRANER	Well #: 26-32	API/UWI #: 05-077-08444	
Field: BRUSH CREEK	City (SAP): COLBRAN	County/Parish: Mesa	State: Colorado
Legal Description:			
Lat: N 39.251 deg. OR N 39 deg. 15 min. 3.996 secs.		Long: E 107.846 deg. OR E 107 deg. 50 min. 44.16 secs.	
Contractor: WORKOVER		Rig/Platform Name/Num: WORKOVER	
Job Purpose: Plug to Abandon Service			Ticket Amount:
Well Type: Development Well		Job Type: Plug to Abandon Service	
Sales Person: PRUETT, BRADLEY		Srvc Supervisor: KUKUS, CHRISTOPHER	MBU ID Emp #: 413952

Activity Description	Date/Time	Cht #	Rate bbl/min	Volume bbl		Pressure psig		Comments
				Stage	Total	Tubing	Casing	
Call Out	05/31/2012 23:00							ELITE # 7
Depart Yard Safety Meeting	06/01/2012 01:30							SAFETY MEETING WITH ALL HES
Arrive At Loc	06/01/2012 03:00							ARRIVED ON LOCATION 2 HOURS EARLY DIDNT START CHARGING TIME UNTIL REQUESTED ON LOCATION TIME
Assessment Of Location Safety Meeting	06/01/2012 03:30							RIG RIH WITH TUBING
Pre-Rig Up Safety Meeting	06/01/2012 05:30							ALL HES EMPLOYEES
Rig-Up Equipment	06/01/2012 06:00							1 F-550 PICKUP 1 HT-400 PUMP TRUCK 1 660 BULK TRUCK
Pre-Job Safety Meeting	06/01/2012 13:00							ALL PERSONNEL ON LOCATION
Start Job	06/01/2012 13:19							TUBING SET @ 4590 PERFS @ 4592 2 3/8 4.7 # TUBING 4 1/2 11.6 # K-55 CSG
Pressure Test	06/01/2012 13:23					5000.0		PRESSURE TEST OK
Pump Spacer	06/01/2012 13:29		0.8	3	3	5.0		FRESH WATER SPACER
Pump Tail Cement	06/01/2012 13:31		1.2	5.1	5.1	18.0		25 SKS 15.8 PPG 1.15 YEILD 5.01 GAL / SK TAIL CEMENT WEIGHT VERIFIED VIA MUD SCALES
Pump Displacement	06/01/2012 13:35		1.2	16	16	7.0		FRESH H2O

Sold To #: 344034

Ship To #: 2928940

Quote #:

Sales Order #: 9560822

SUMMIT Version: 7.3.0030

Saturday, June 02, 2012 01:14:00

Activity Description	Date/Time	Cht #	Rate bbl/min	Volume bbl		Pressure psig		Comments
				Stage	Total	Tubing	Casing	
Shutdown	06/01/2012 13:47							
Other	06/01/2012 13:50							RIG PULLED 16 STICKS OF TUBING
Reverse Circ Well	06/01/2012 14:02		2	34.5	34.5	113.0		HES REVERSE OUT REVERSED 2 BBL OF DIRTY WATER
End Job	06/01/2012 14:22							HES CREW WAIT FOR NEXT PLUG
Other	06/01/2012 15:05							RIG TAG A 132 FOOT PLUG @ 4459
Start Job	06/01/2012 17:28							TUBING SET @ 4398 PERFS @ 4400 2 3/8 4.7 # TUBING 4 1/2 11.6 # K-55 CSG
Pressure Test	06/01/2012 17:31					5716.0		PRESSURE TEST OK
Pump Tail Cement	06/01/2012 17:40		1	6.2	6.2	5.0		30.3 SKS 15.8 PPG 1.15 YEILD 5.01 GAL / SK TAIL CEMENT WEIGHT VERIFIED VIA MUD SCALES
Pump Displacement	06/01/2012 17:46		1	14.8	14.8	.0		FRESH WATER DISPLACEMENT
Shutdown	06/01/2012 17:58							
Other	06/01/2012 17:59							RIG PULLED 21 STICKS OF TUBING
Reverse Circ Well	06/01/2012 18:14		2	40	40	116.0		HES REVERSE OUT REVERSED 2 BBL OF DIRTY WATER
End Job	06/01/2012 18:34							RIG PULLED REMAINDER OF TUBING UP TO 1470 HES CREW RELEASED FROM LOCATION @ 1900 AND REQUESTED ON LOCATION AT 0700 ON 06/02/12
Start Job	06/02/2012 07:54							RETAINER SET @ 1470 PERFS @ 1520 2 3/8 4.7 # TUBING 4 1/2 11.6 # K-55 CSG
Pressure Test	06/02/2012 07:57					5038.0		PRESSURE TEST OK
Injection Test	06/02/2012 08:01		0.8	10	10	285.0		FRESH WATER

Sold To # : 344034

Ship To # : 2928940

Quote # :

Sales Order # : 9560822

SUMMIT Version: 7.3.0030

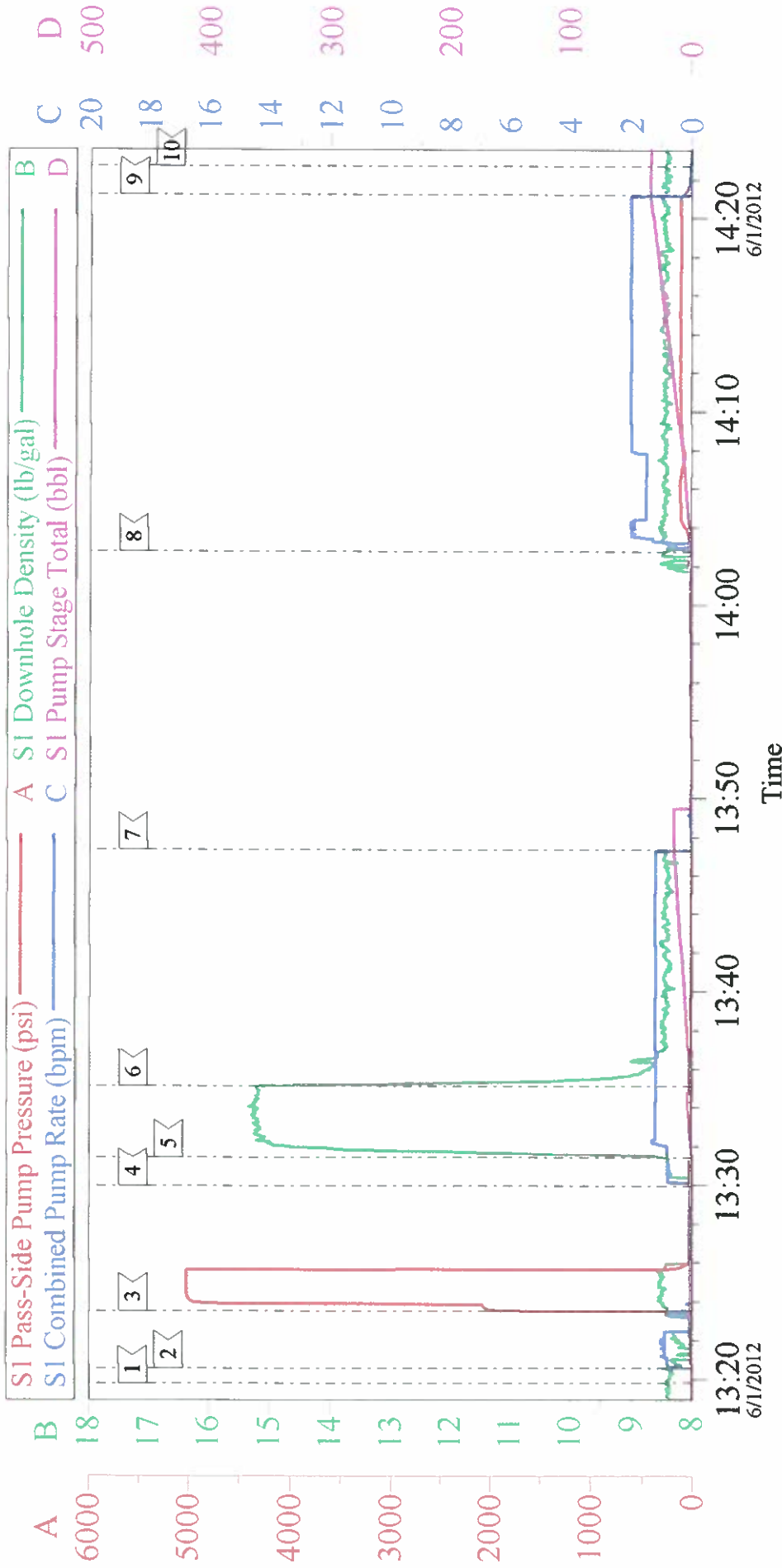
Saturday, June 02, 2012 01:14:00

Activity Description	Date/Time	Cht #	Rate bbl/min	Volume bbl		Pressure psig		Comments
				Stage	Total	Tubing	Casing	
Pump Tail Cement	06/02/2012 08:13		1.5	6.1	6.1	185.0		30 SKS 15.8 PPG 1.15 YEILD 5.01 GAL / SK TAIL CEMENT WEIGHT VERIFIED VIA MUD SCALES
Pump Displacement	06/02/2012 08:19		1.5	4.7	4.7	90.0		FRESH WATER DISPLACEMENT
Shutdown	06/02/2012 08:21							RIG PULL UP OUT OF RETAINER AND PULLED 3 STICKS OF TUBING
Reverse Circ Well	06/02/2012 08:31							HES REVERSE OUT REVERSED 2BBL OF DIRTY WATER
End Job	06/02/2012 08:38							HES CREW WAIT FOE NEXT PLUG
Start Job	06/02/2012 09:52							RETAINER SET @ 1470 PERFS @ 1520 2 3/8 4.7 # TUBING 4 1/2 11.6 # K-55 CSG
Pressure Test	06/02/2012 09:55					4536.0		PRESSURE TEST OK
Injection Test	06/02/2012 09:59		1.8	15	15	280.0		FRESH WATER
Pump Tail Cement	06/02/2012 10:09		2	51.6	51.6	285.0		252 SKS 15.8 PPG 1.15 YEILD 5.01 GAL / SK TAIL CEMENT WEIGHT VERIFIED VIA MUD SCALES
Pump Displacement	06/02/2012 10:48		1	1.6	1.6	136.0		FRESH WATER DISPLACEMENT
Shutdown	06/02/2012 10:49							RIG PULL UP OUT OF RETAINER AND HES REVERSED OUT
Reverse Circ Well	06/02/2012 10:53		1	8	8	185.0		HES REVERSE OUT REVERSED 2BBL OF CEMENT BACK
End Job	06/02/2012 11:03							HES CREW WAIT FOR TOP OUT WELL
Start Job	06/02/2012 12:24							TUBING @ 30' TOP WELL TO SURFACE
Pressure Test	06/02/2012 12:27					4850.0		
Pump Tail Cement	06/02/2012 12:30		1	7	7	17.0		39 SKS 15.8 PPG 1.15 YEILD 5.01 GAL / SK TAIL CEMENT WEIGHT VERIFIED VIA MUD SCALES

Activity Description	Date/Time	Cht #	Rate bbl/min	Volume bbl		Pressure psig		Comments
				Stage	Total	Tubing	Casing	
Shutdown	06/02/2012 12:43							1BBL CEMENT RETURN TO SURFACE
End Job	06/02/2012 12:44							
Pre-Rig Down Safety Meeting	06/02/2012 13:00							ALL HES EMPLOYEES
Rig-Down Equipment	06/02/2012 13:30							
Pre-Convoy Safety Meeting	06/02/2012 14:30							ALL HES EMPLOYEES
Crew Leave Location	06/02/2012 15:00							THANK YOU FOR USING HALLIBURTON CEMENT CHRIS KUKUS AND CREW

OXY - TEXACO-STRANER 26-32

PTA PLUG #1



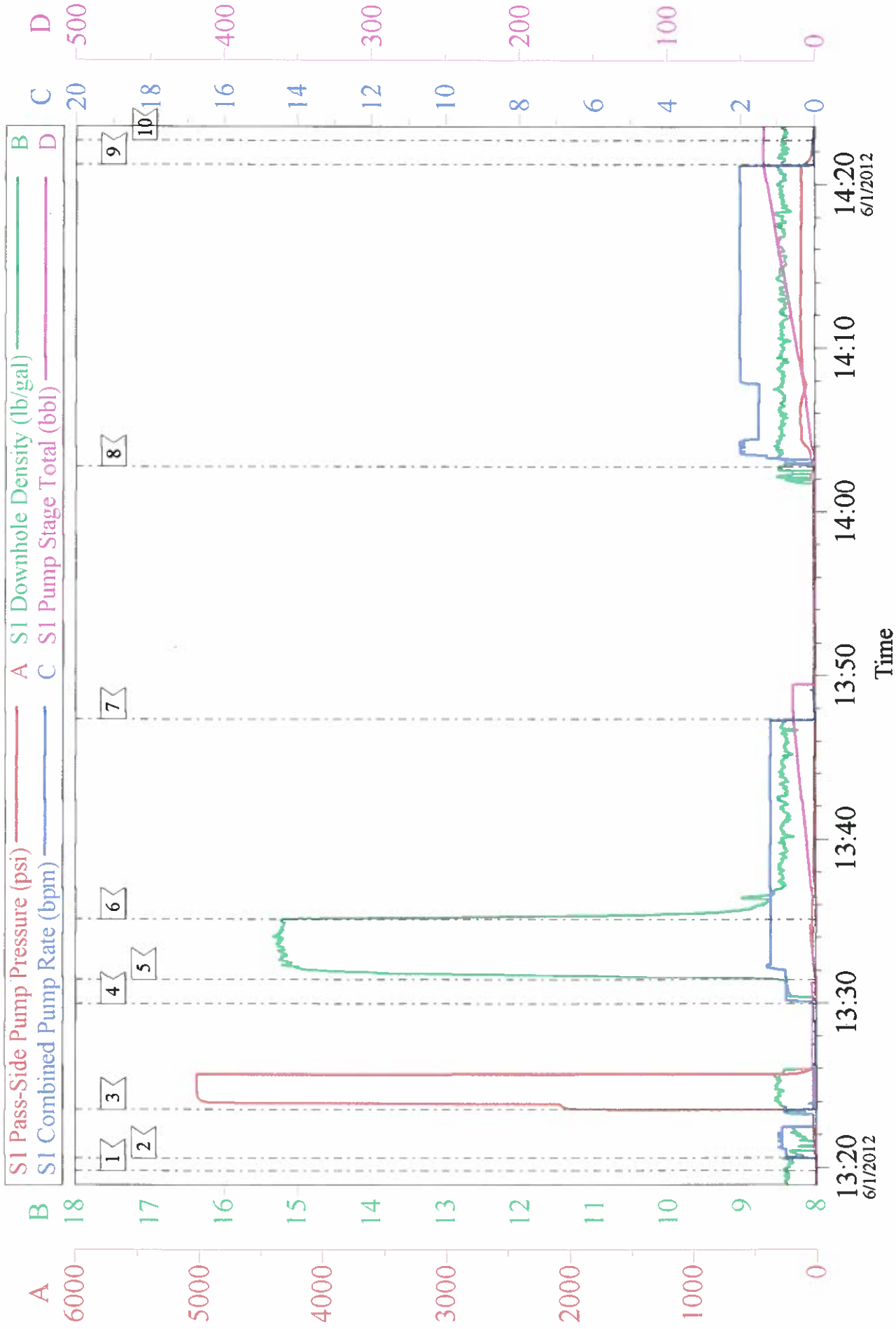
Customer: OXY
 Well Description: TEXACO-STRANER 26-32
 Company Rep: RICK STEVENS

Job Date: 01-Jun-2012
 Job Type: PTA
 Cement Supervisor: CHRIS KUKUS

Sales Order #: 9560822
 ADC Used: YES
 Elite # 7: REGGIE MILLER

OXY - TEXACO-STRANER 26-32

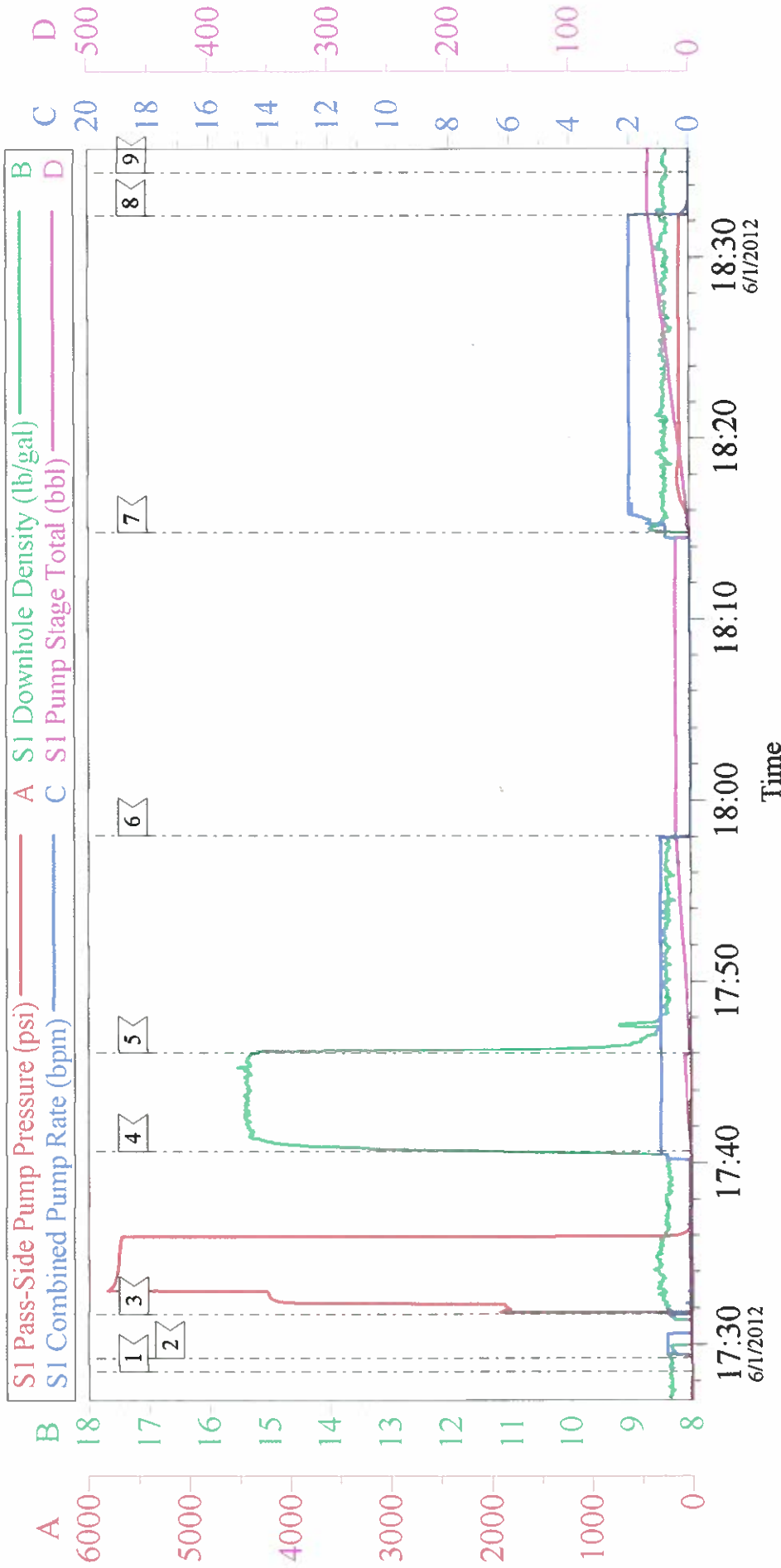
PTA PLUG #1



Customer: OXY	Job Date: 01-Jun-2012	Sales Order #: 9560822
Well Description: TEXACO-STRANER 26-32	Job Type: PTA	ADC Used: YES
Company Rep: RICK STEVENS	Cement Supervisor: CHRIS KUKUS	Elite # 7: REGGIE MILLER

OXY - TEXACO - STRANER 26-32

PTA PLUG #2



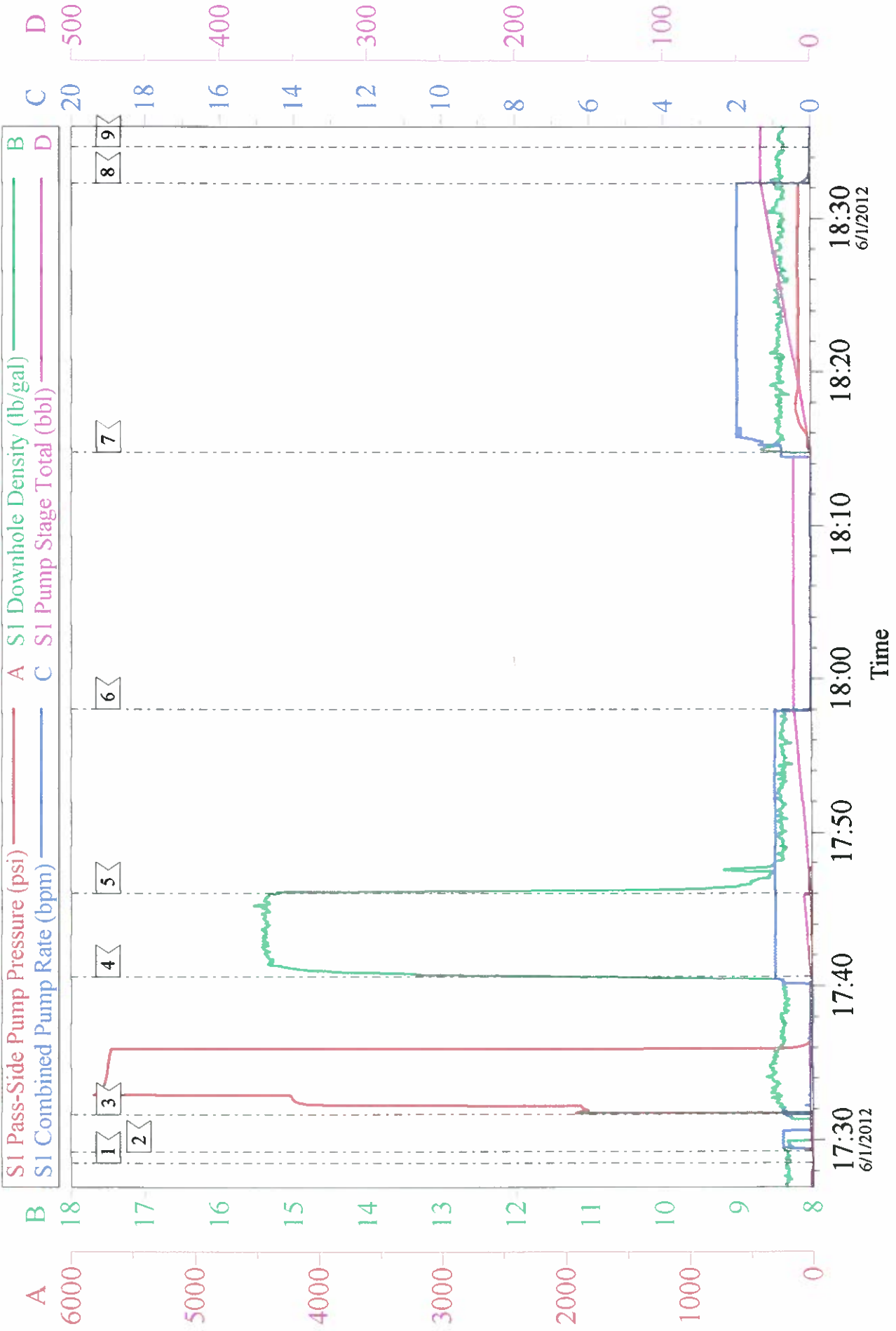
Local Event Log

1	START JOB	17:28:34	2	FILL LINES	17:29:17
3	PRESSURE TEST	17:31:42	4	PUMP TAIL CEMENT	17:40:39
5	PUMP H2O DISPLACEMENT	17:46:03	6	SHUT DOWN / RIG PULL PIPE	17:58:04
7	REVERSE OUT	18:14:45	8	SHUT DOWN	18:32:15
9	END JOB	18:34:39			

Customer:	OXY	Job Date:	01-Jun-2012	Sales Order #:	9560822
Well Description:	TEXACO- STRANER 26-32	Job Type:	PTA	ADC Used:	YES
Company Rep:	RICK STEVENS	Cement Supervisor:	CHRIS KUKUS	Elite # 7:	REGGIE MILLER

OXY - TEXACO - STRANER 26-32

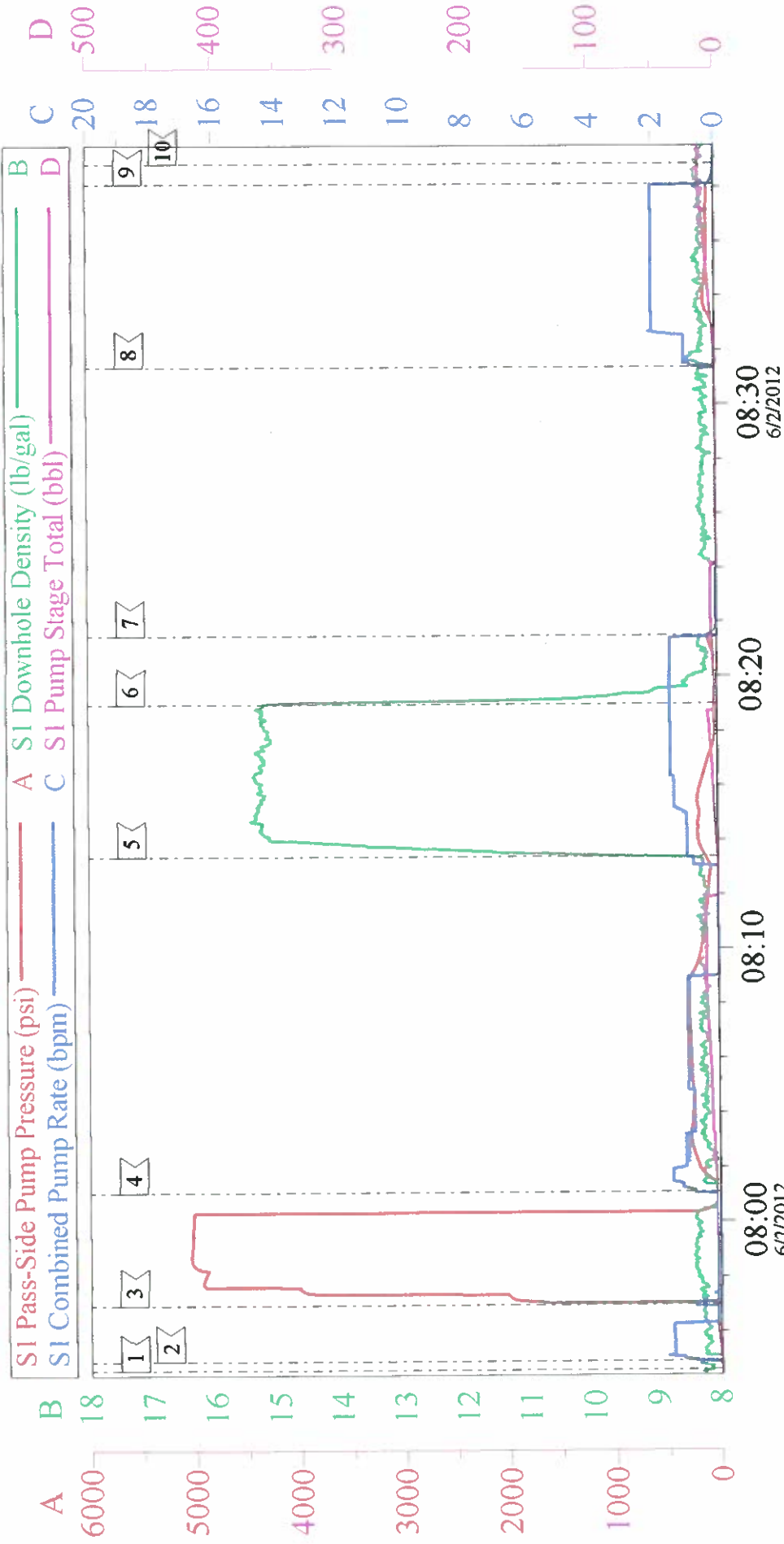
PTA PLUG #2



Customer: OXY	Job Date: 01-Jun-2012	Sales Order #: 9560822
Well Description: TEXACO- STRANER 26-32	Job Type: PTA	ADC Used: YES
Company Rep: RICK STEVENS	Cement Supervisor: CHRIS KUKUS	Elite # 7: REGGIE MILLER

OXY - TEXACO STRANER 26-32

PTA PLUG #3



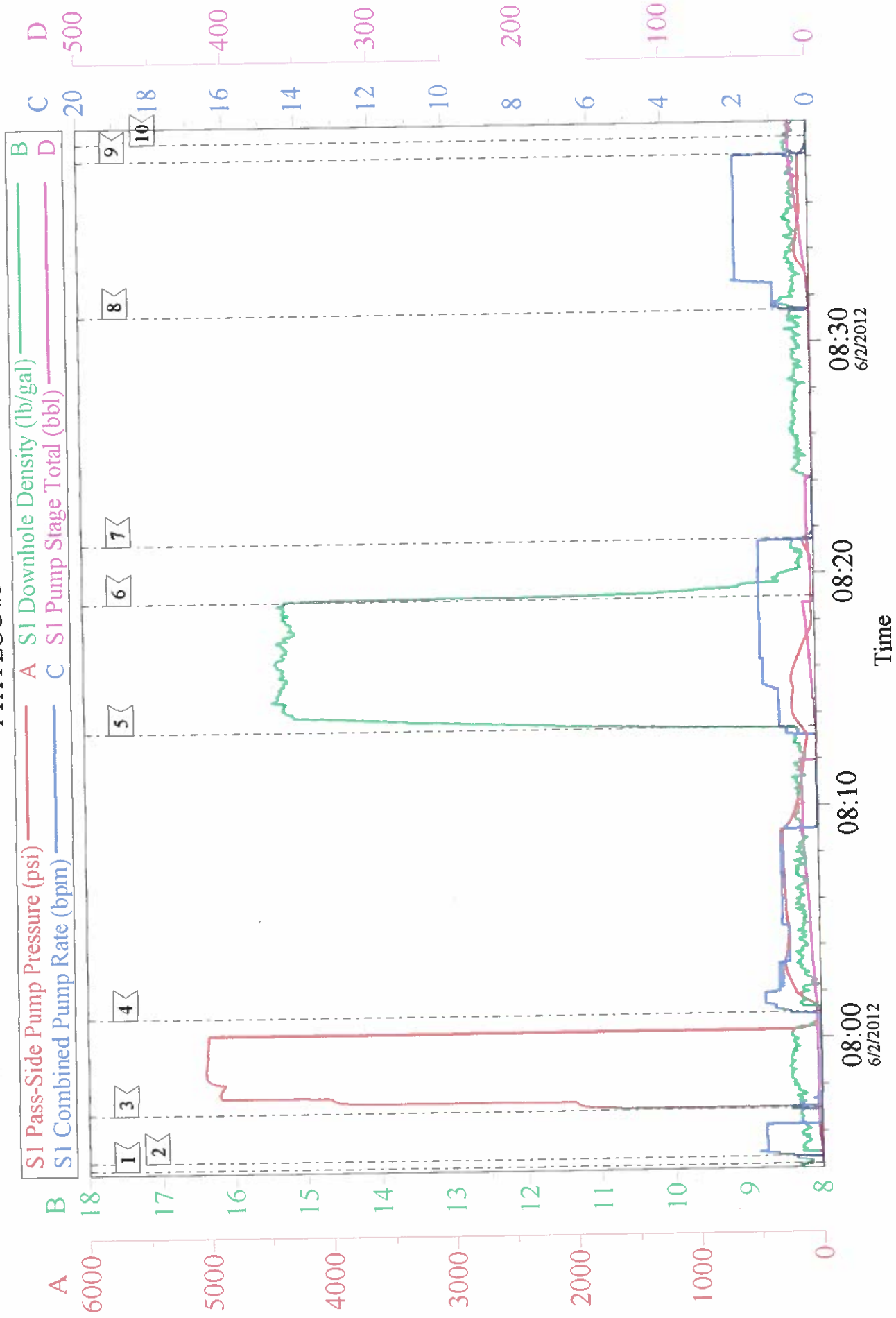
Local Event Log

1	START JOB	07:54:37	2	FILL LINES	07:54:57	3	PRESSURE TEST	07:57:00
4	INJECTION TEST	08:01:06	5	PUMP TAIL CEMENT	08:13:25	6	PUMP H2O DISPLACEMENT	08:19:00
7	SHUT DOWN	08:21:30	8	REVERSE OUT	08:31:22	9	SHUT DOWN	08:38:06
10	END JOB	08:38:50						

Customer: OXY	Job Date: 02-Jun-2012	Sales Order #: 9560822
Well Description: TEXACO STRANER 26-32	Job Type: PTA	ADC Used: YES
Company Rep: RICK STEVENS	Cement Supervisor: CHRIS KUKUS	Elite # 7: REGGIE MILLER

OXY - TEXACO STRANER 26-32

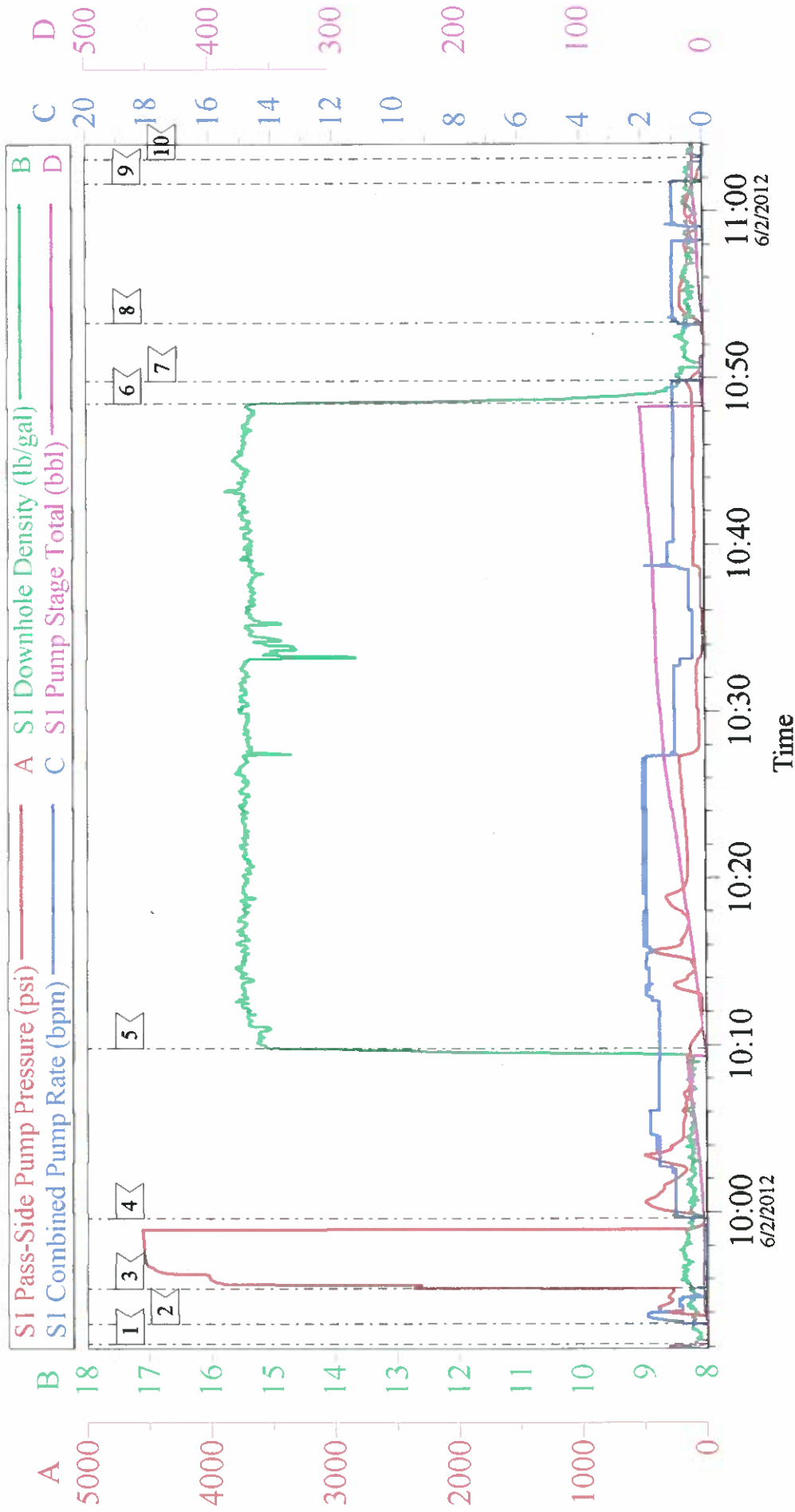
PTA PLUG #3



Customer: OXY	Job Date: 02-Jun-2012	Sales Order #: 9560822
Well Description: TEXACO STRANER 26-32	Job Type: PTA	ADC Used: YES
Company Rep: RICK STEVENS	Cement Supervisor: CHRIS KUKUS	Elite # 7: REGGIE MILLER

OXY - TEXACO STRANER 26-32

PTA PLUG #4



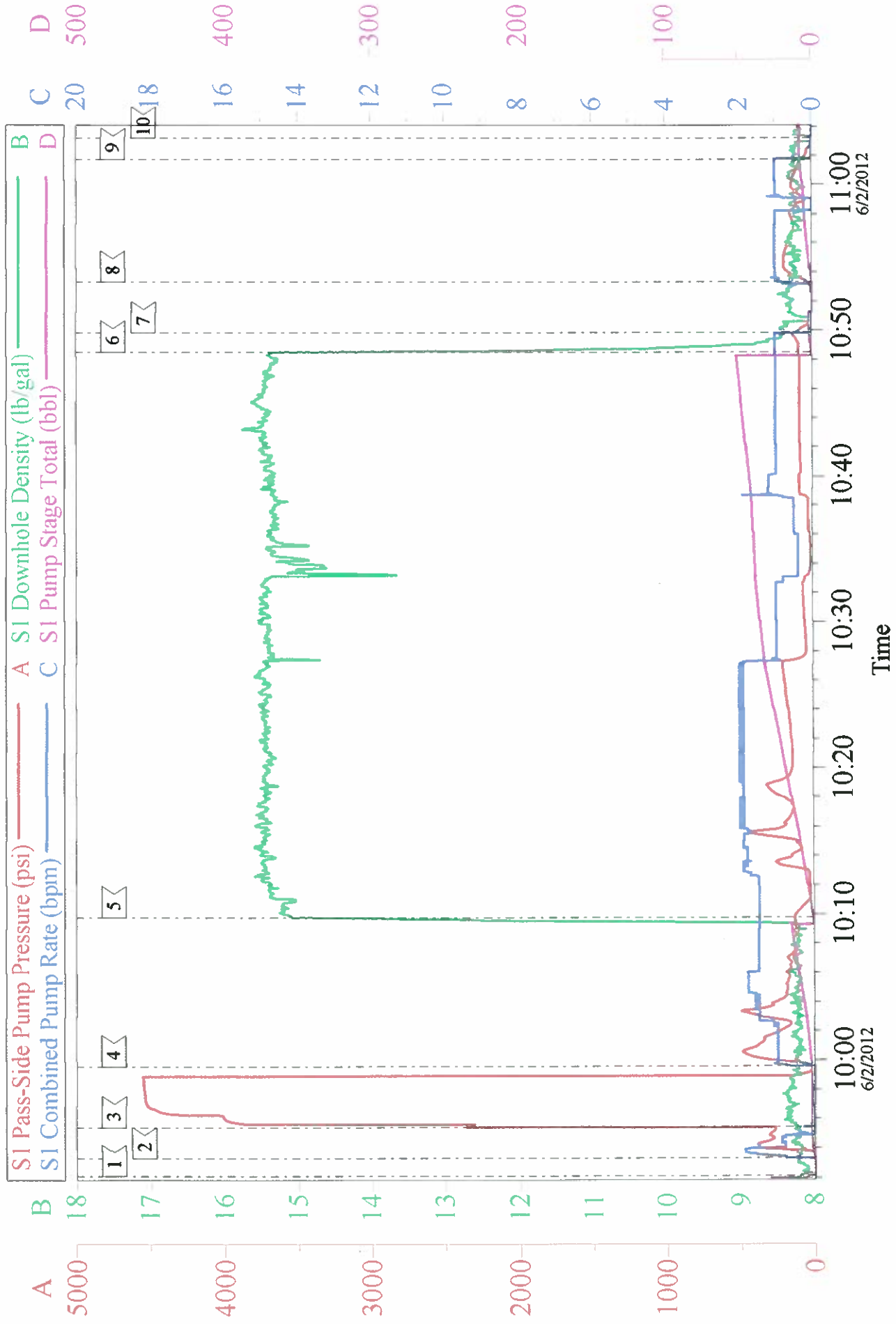
Local Event Log

1	START JOB	09:52:11	2	FILL LINES	09:53:23	3	PRESSURE TEST	09:55:29
4	INJECTION TEST	09:59:38	5	PUMP TAIL CEMENT	10:09:49	6	PUMP DISPLACEMENT	10:48:32
7	SHUT DOWN	10:49:51	8	REVERSE OUT	10:53:20	9	SHUT DOWN	11:01:45
10	END JOB	11:03:12						

Customer:	OXY	Job Date:	02-Jun-2012	Sales Order #:	9560822
Well Description:	TEXACO STRANER 26-32	Job Type:	PTA	ADC Used:	YES
Company Rep:	RICK STEVENS	Cement Supervisor:	CHRIS KUKUS	Elite # 7:	REGGIE MILLER

OXY - TEXACO STRANER 26-32

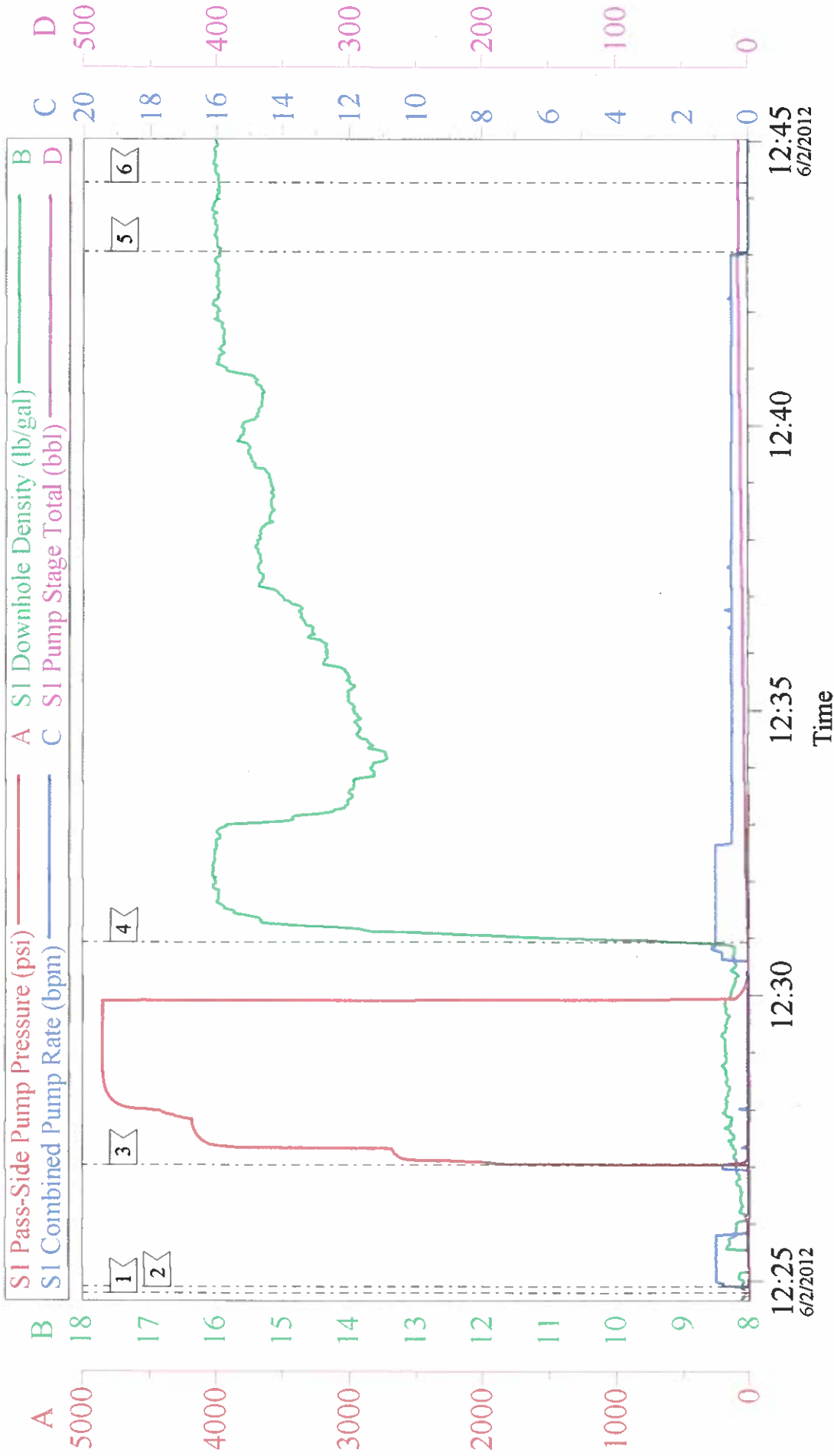
PTA PLUG #4



Customer: OXY	Job Date: 02-Jun-2012	Sales Order #: 9560822
Well Description: TEXACO STRANER 26-32	Job Type: PTA	ADC Used: YES
Company Rep: RICK STEVENS	Cement Supervisor: CHRIS KUKUS	Elite # 7: REGGIE MILLER

OXY - TEXACO STRANER 26-32

PTA PLUG #5



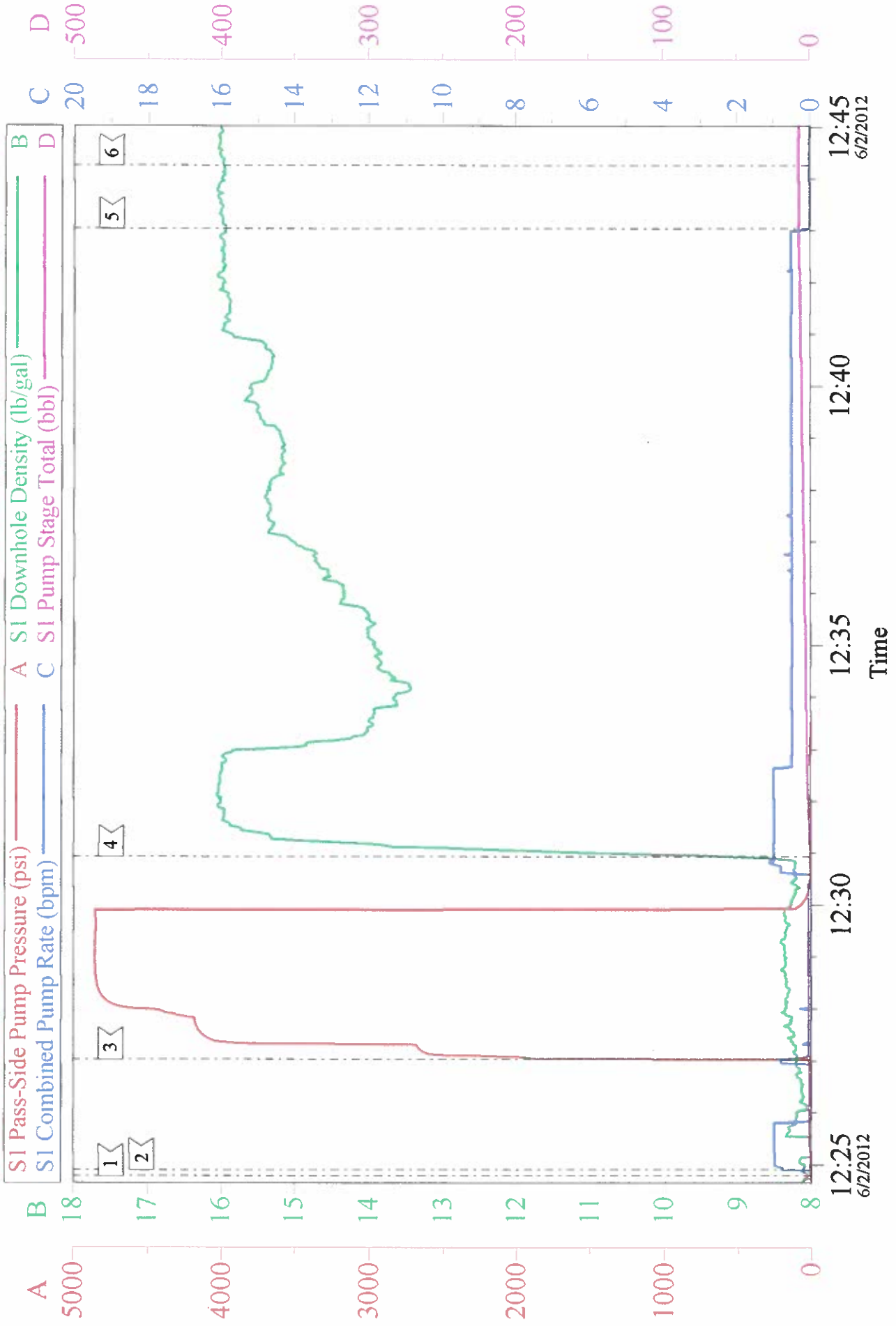
Local Event Log

1	START JOB	12:24:48	2	FILL LINES	12:24:55	3	PRESSURE TEST	12:27:02
4	PUMP TAIL CEMENT	12:30:56	5	SHUT DOWN	12:43:02	6	END JOB	12:44:15

Customer:	OXY	Job Date:	02-Jun-2012	Sales Order #:	9560822
Well Description:	TEXACO STRANER	Job Type:	PTA	ADC Used:	YES
Company Rep:	RICK STEVENS	Cement Supervisor:	CHRIS KUKUS	Elite 7:	REGGIE MILLER

OXY - TEXACO STRANER 26-32

PTA PLUG #5



Customer: OXY	Job Date: 02-Jun-2012	Sales Order #: 9560822	OptiCem v6.4.10
Well Description: TEXACO STRANER	Job Type: PTA	ADC Used: YES	02-Jun-12 12:57
Company Rep: RICK STEVENS	Cement Supervisor: CHRIS KUKUS	Elite 7: REGGIE MILLER	