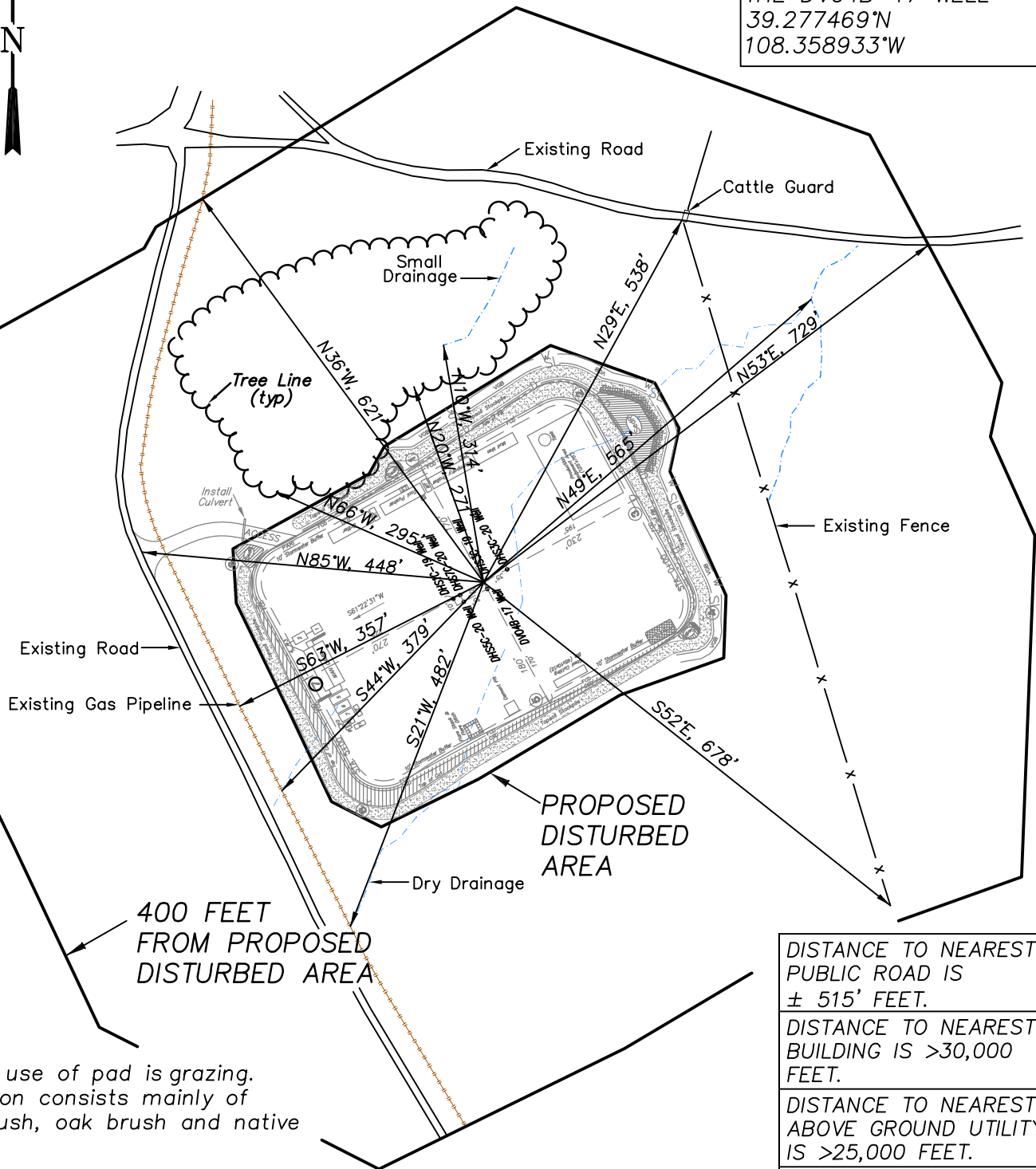


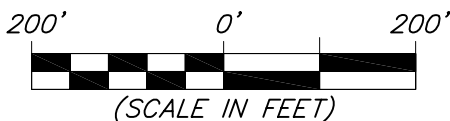
Encana Oil & Gas (USA) Inc.
ADDENDUM TO LEGAL PLATS FOR
D17 998 Well Pad

SECTION 17, T9S, R98W, 6th P.M.

SURVEY TIES ARE FROM
 THE DV04B-17 WELL
 39.277469°N
 108.358933°W



Surface use of pad is grazing.
 Vegetation consists mainly of
 sage brush, oak brush and native
 grasses.



DISTANCE TO NEAREST
 PUBLIC ROAD IS
 ± 515' FEET.

DISTANCE TO NEAREST
 BUILDING IS >30,000
 FEET.

DISTANCE TO NEAREST
 ABOVE GROUND UTILITY
 IS >25,000 FEET.

DISTANCE TO NEAREST
 RAILROAD IS ±28,000
 FEET.



906 Main Street
 Evanston, Wyoming 82930
 Phone No. (307) 789-4545

Survey Addendum		Scale: 1" = 200'	SHEET 1g OF 10
Project No.	12-04-17	Date Surveyed: 3/22/12	
Date Drawn:	5/18/12	Latest Revision Date:	