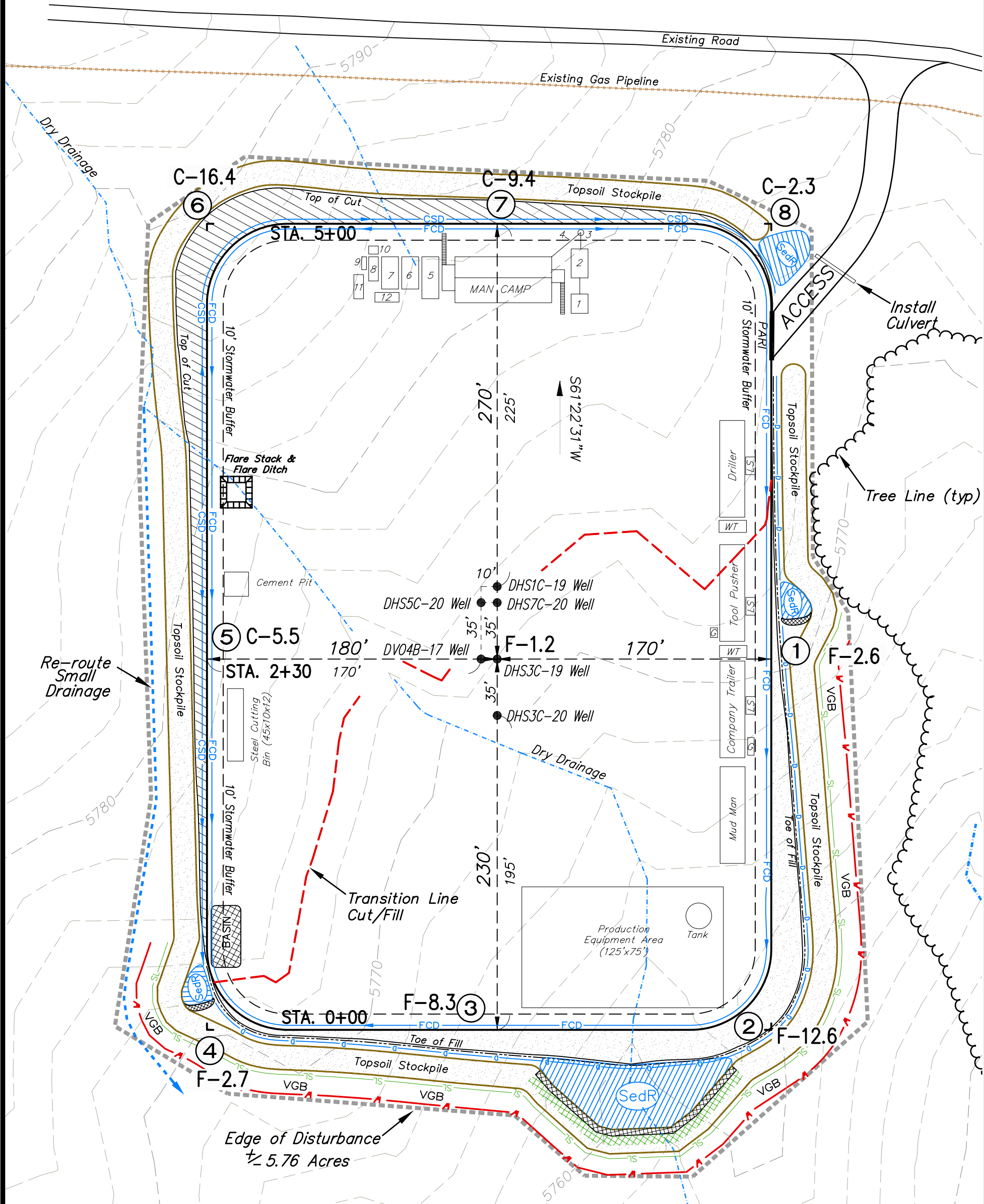


Encana Oil & Gas (USA) Inc.  
D17 998 Well Pad

NW1/4 NW1/4, SECTION 17, T9S, R98W, 6th P.M.  
WELL PAD LAYOUT

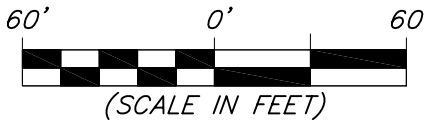


Total Surface Disturbance = 5.76 Acres  
(See Sheet 4 for Details)

- NOTES:
- (1) Slope Track and/or Terrace all Slopes and Piles
  - (2) Erosion Control & Seed Topsoil
  - (3) Erosion Control & Seed Outside
  - (4) Slope away from Substructure Areas 1% to 3% to Flow Control

- LEGEND
- SL = SLASH
  - ST = SEDIMENT TRAP
  - SedR = SEDIMENT RESERVOIR
  - R.O.D. = RUN-ON DIVERSION
  - W = PERIMETER CONTROL (WATTLES)
  - CSD = CUT SLOPE DIVERSION (BERM TOE OF CUT SLOPE)
  - D = FILL DIVERSION TO SEDIMENT TRAP
  - VGB = VEGETATION BUFFER (UNDISTURBED LAND INSIDE PC)
  - FCD = FLOW CONTROL DITCH
  - PARI = PAD/ACCESS ROAD INTERFACE
  - LEVEL SPREADER
  - TOE BERM (PLACED AT TOE OF ALL FILL SLOPES/STOCKPILES)
  - TOPSOIL BERM
  - SEED, ECB & FLEX

Elev. Ungraded Ground At DHS3C-19 Well Loc. Stake = 5771.9'  
FINISHED GRADE ELEV. AT DHS3C-19 WELL LOC. STAKE = 5773.1'

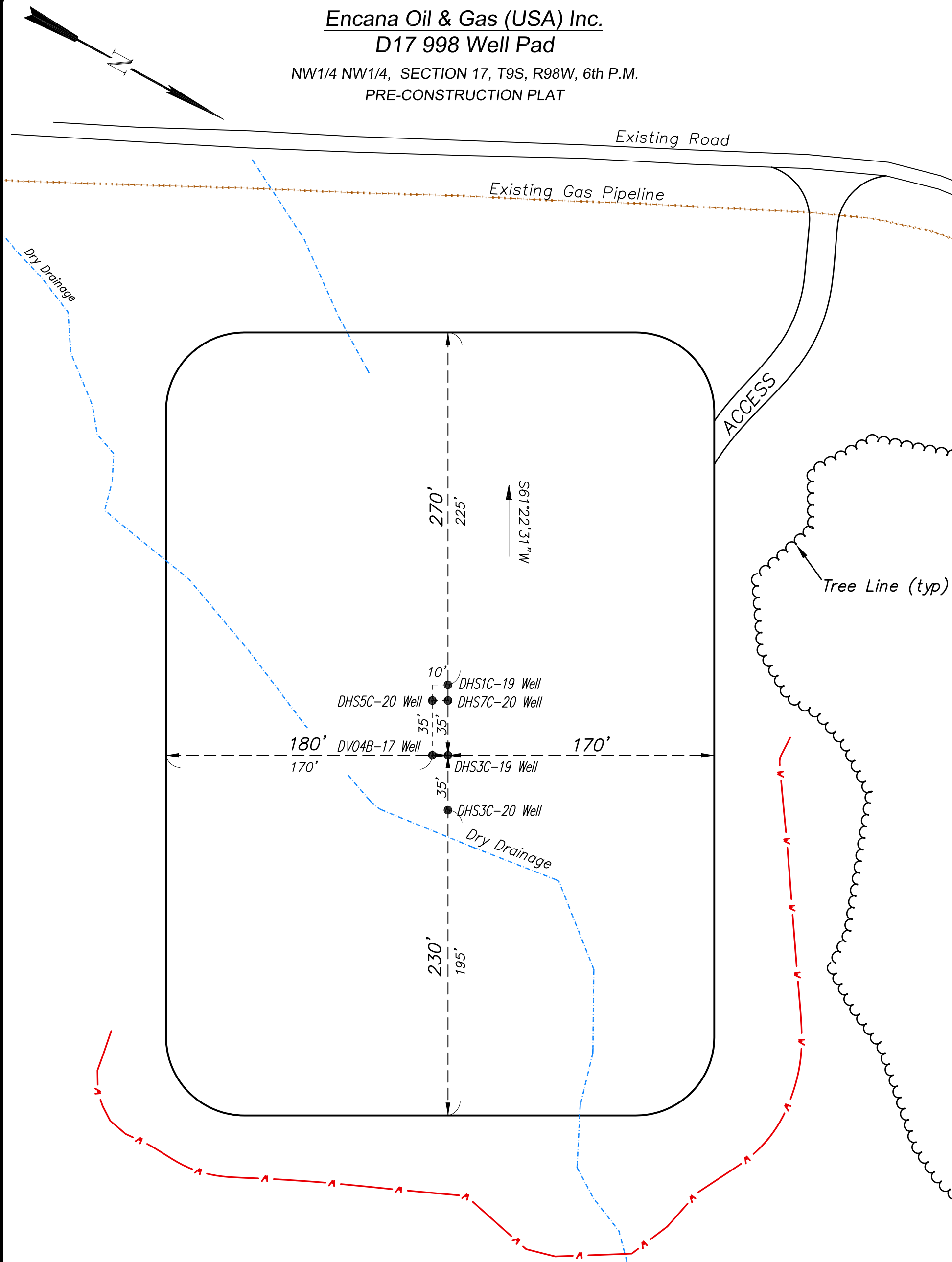


906 Main Street  
Evanston, Wyoming 82930  
Phone No. (307) 789-4545

Well Pad Layout		Scale: 1" = 60'	SHEET 3 OF 10
Project No.	12-04-17	Date Surveyed: 3/22/12	
Date Drawn: 5/18/12		Latest Revision	
		Date:	

Encana Oil & Gas (USA) Inc.  
D17 998 Well Pad

NW1/4 NW1/4, SECTION 17, T9S, R98W, 6th P.M.  
PRE-CONSTRUCTION PLAT



Total Surface Disturbance = 5.76 Acres  
(See Sheet 4 for Details)

- NOTES:
- (1) Slope Track and/or Terrace all Slopes and Piles
  - (2) Erosion Control & Seed Topsoil
  - (3) Erosion Control & Seed Outside
  - (4) Slope away from Substructure Areas 1% to 3% to Flow Control

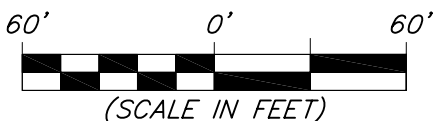
- LEGEND
- SL = SLASH
  - ST = SEDIMENT TRAP
  - SedR = SEDIMENT RESERVOIR
  - R.O.D. = RUN-ON DIVERSION
  - W = PERIMETER CONTROL (WATTLES)
  - CSD = CUT SLOPE DIVERSION (BERM TOE OF CUT SLOPE)
  - D = FILL DIVERSION TO SEDIMENT TRAP
  - VCB = VEGETATION BUFFER (UNDISTURBED LAND INSIDE PC)
  - FCD = FLOW CONTROL DITCH
  - PARI = PAD/ACCESS ROAD INTERFACE
  - LEVEL SPREADER
  - TOE BERM (PLACED AT TOE OF ALL FILL SLOPES/STOCKPILES)
  - TOPSOIL BERM
  - SEED, ECB & FLEX

PRE-CONSTRUCTION PHASE COMPLETE,  
AUTHORIZATION TO CONTINUE  
CONSTRUCTION.

SIGNATURE: \_\_\_\_\_



906 Main Street  
Evanston, Wyoming 82930  
Phone No. (307) 789-4545

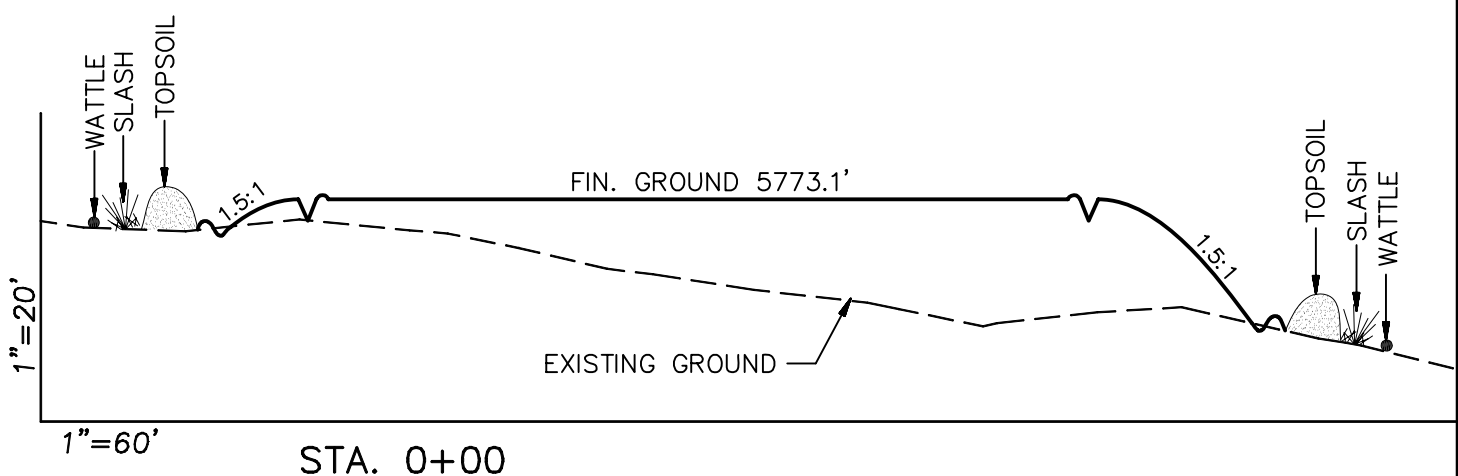
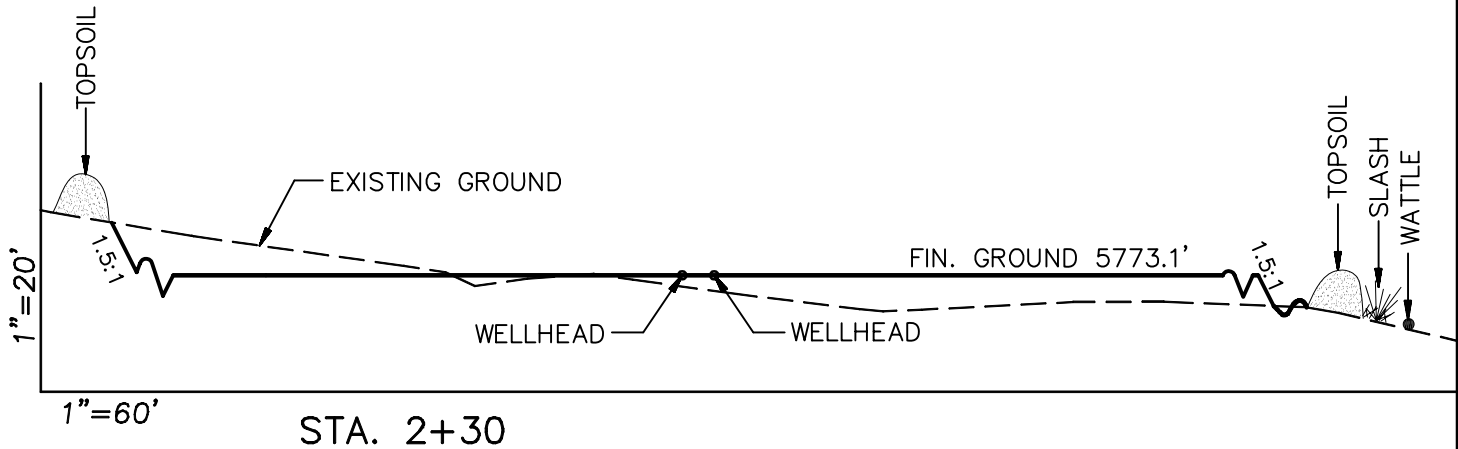
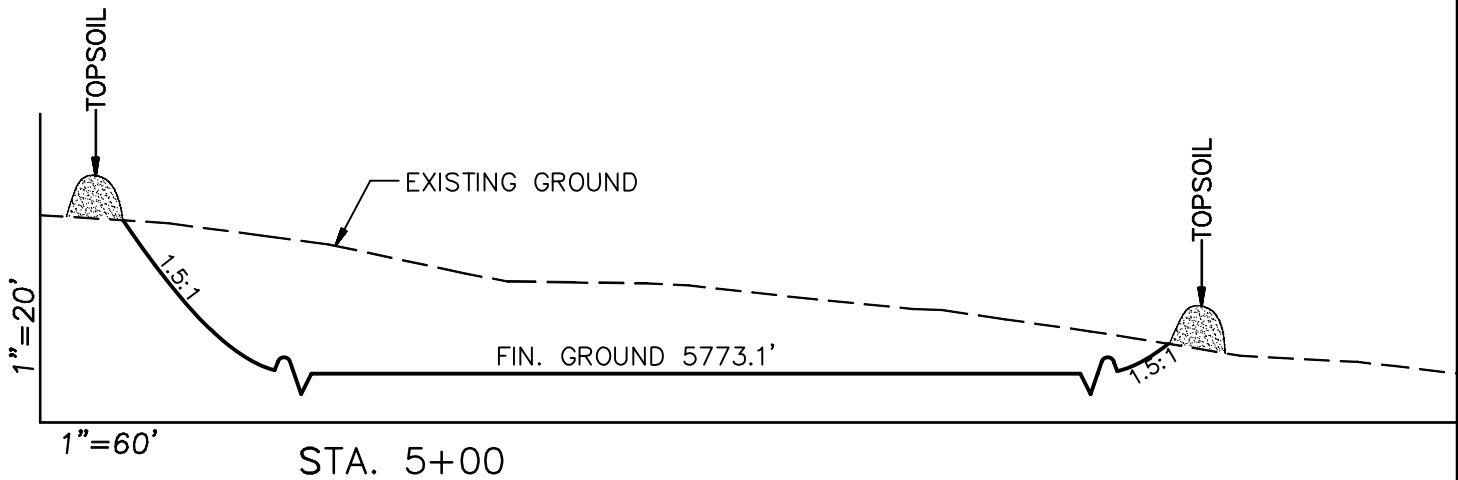


Pre-Construction		Scale: 1" = 60'	SHEET <b>3a</b> OF 10
Project No.	12-04-17	Date Surveyed: 3/22/12	
Date Drawn: 5/18/12		Latest Revision	
		Date:	

# Encana Oil & Gas (USA) Inc.

## D17 998 Well Pad

### CROSS SECTIONS



#### SURFACE DISTURBANCE (IN ACRES)

Well Pad	3.97
Side Slopes	0.40
Stockpiles & Stormwater	1.39
TOTAL	5.76

#### NOTE:

ALL CUT AND FILL  
SLOPES ARE AT 1.5:1  
UNLESS OTHERWISE  
NOTED.

#### EARTHWORK QUANTITIES

\*(in Cubic Yards w/ 5% shrink/swell)

ITEM	CUT	FILL	6" TOPSOIL	EXCESS
PAD	17292	16341	Topsoil not included in Excavation	*951
PIT	0	0		0
TOTALS	17292	16341	3524	0

#### Cross Sections

Project No. 12-04-17  
Date Drawn: 5/18/12

#### Scale: As Shown

Date Surveyed: 3/22/12  
Latest Revision Date:

#### SHEET

**4**

OF 10

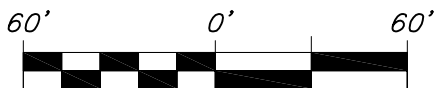
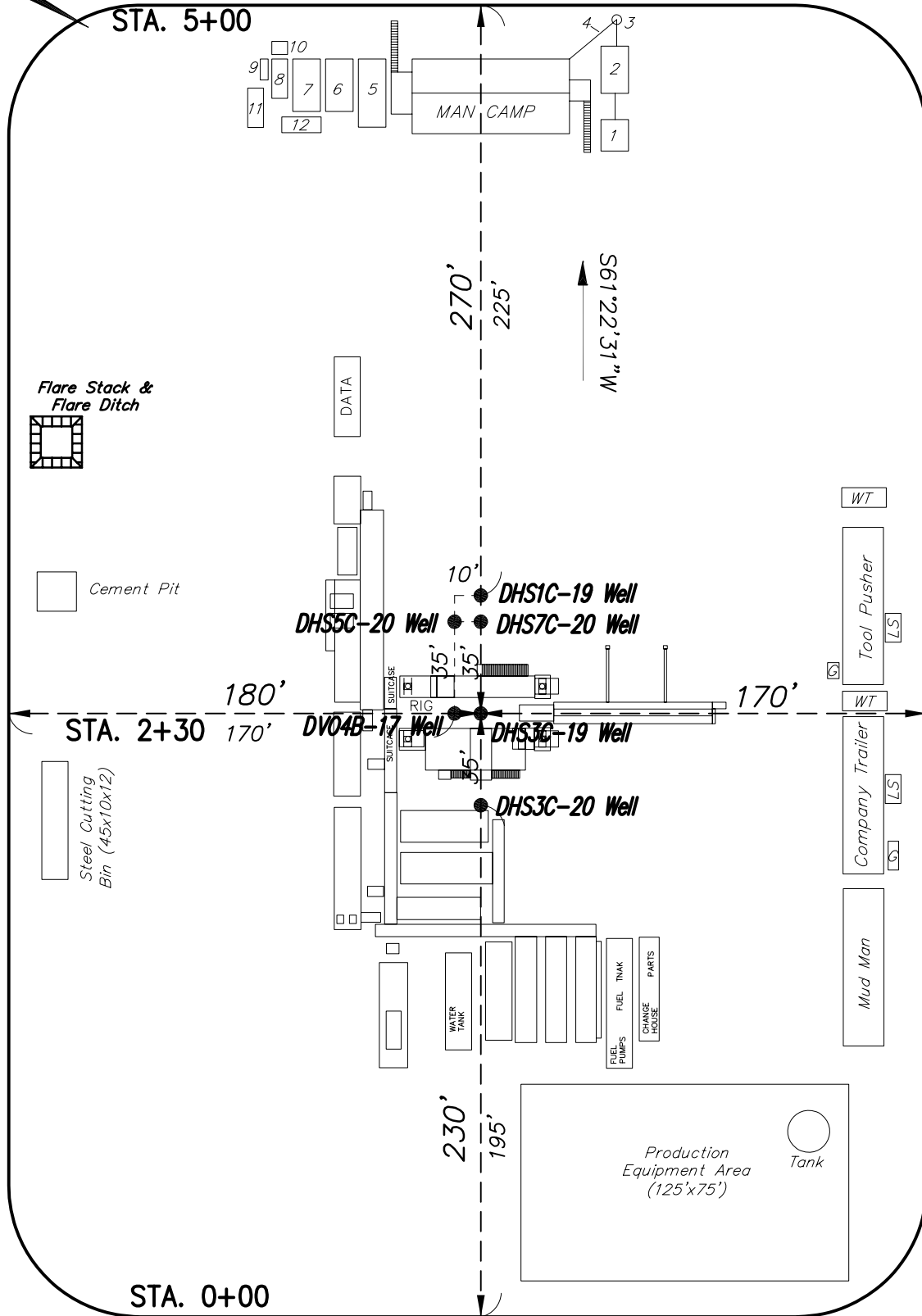


906 Main Street  
Evanston, Wyoming 82930  
Phone No. (307) 789-4545

# Encana Oil & Gas (USA) Inc.

## D17 998 Well Pad

### TYPICAL RIG LAYOUT

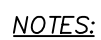


(SCALE IN FEET)



906 Main Street  
Evanston, Wyoming 82930  
Phone No. (307) 789-4545

Rig Layout		Scale: 1" = 60'	SHEET <b>5</b> OF 10
Project No.	12-04-17	Date Surveyed: 3/22/12	
Date Drawn:	5/18/12	Latest Revision Date:	

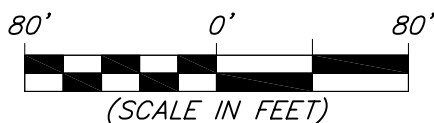
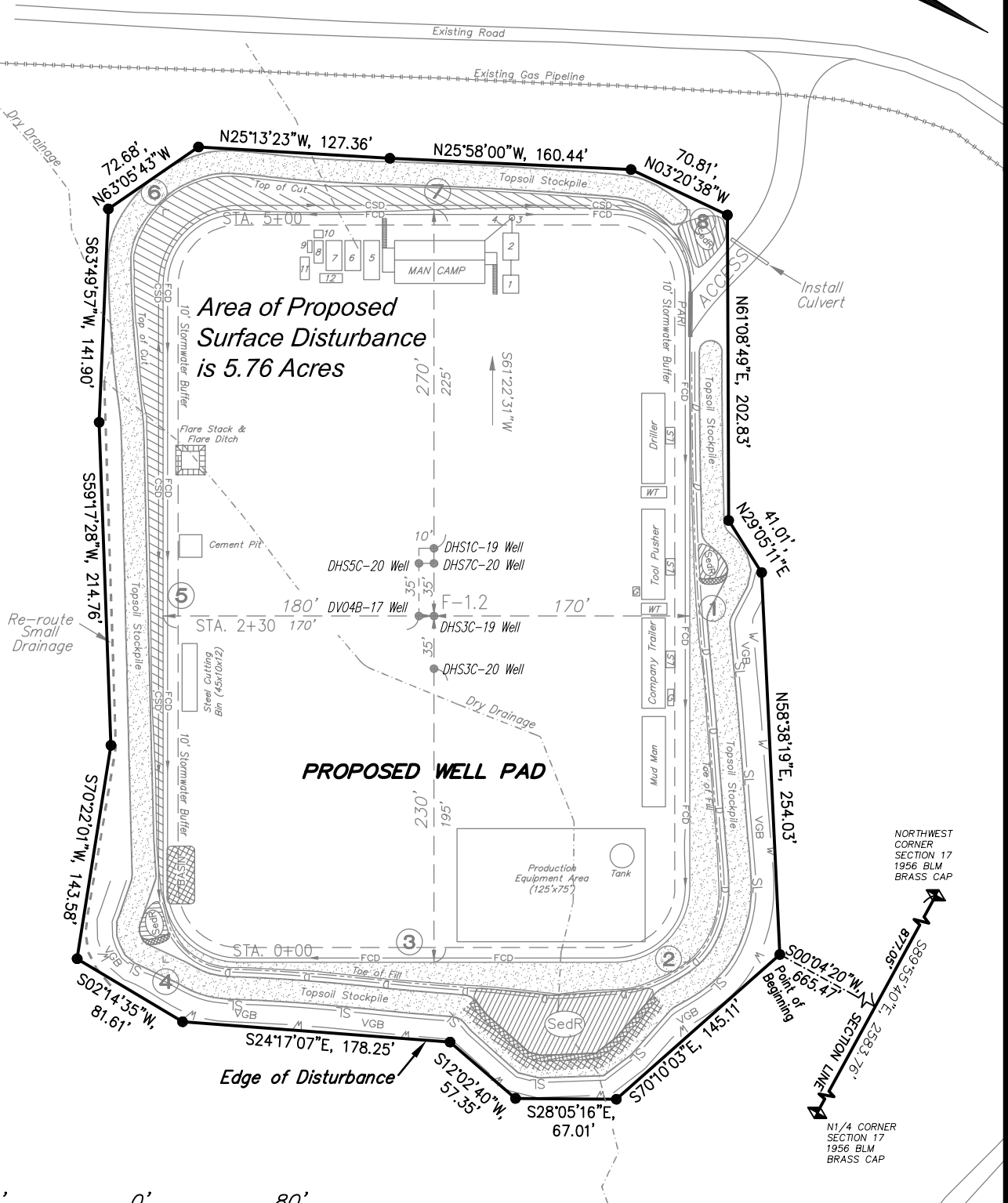


- NOTE:**  
Actual Equipment Layout and  
Reclaimed Pad Surface Area May  
Change due to Production  
Requirements or Site Conditions.

LEGEND

<i>Production Schematic</i>		Scale: 1" = 50'	SHEET <b>6</b> OF 10	
Project No.	12-04-17	Date Surveyed:		3/22/12
Date Drawn:	5/18/12	Latest Revision Date:		

**Encana Oil & Gas (USA) Inc.**  
**D17 998 Well Pad**  
**Section 17, T9S, R98W, 6th P.M.**  
**SURFACE DISTURBANCE AREA**



906 Main Street  
 Evanston, Wyoming 82930  
 Phone No. (307) 789-4545

Surface Disturbance		Scale: 1" = 80'	SHEET <b>7</b> OF 10
Project No.	12-04-17	Date Surveyed: 3/22/12	
Date Drawn:	5/18/12	Latest Revision Date:	