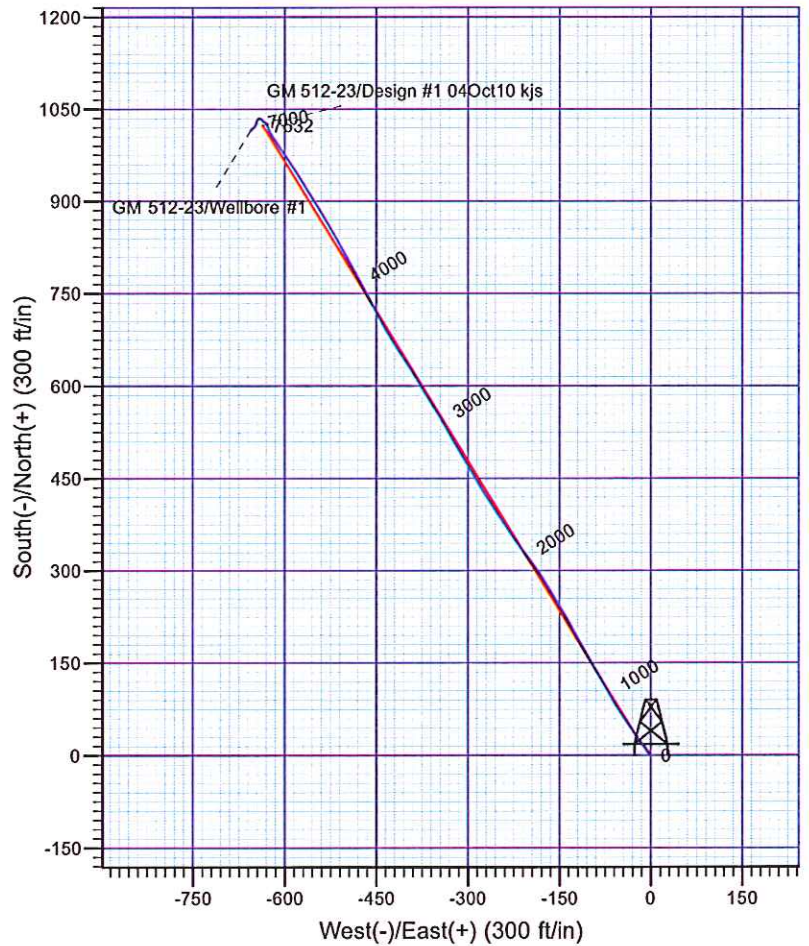
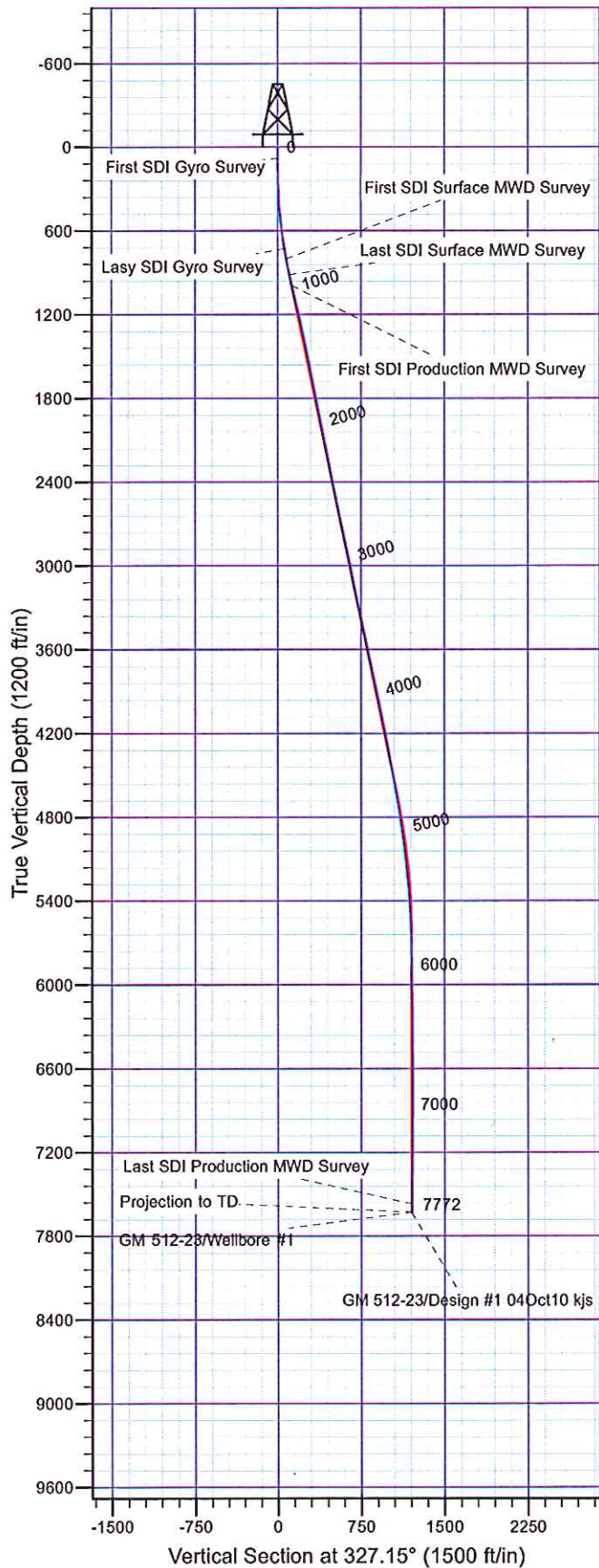




Scientific Drilling
Rocky Mountain Operations

Company: Williams Production Co.
Project: Garfield County, CO NAD83
Site: MV 10-23 Pad
Well: GM 512-23
Wellbore: Wellbore #1
Design: Wellbore #1



Well Details: GM 512-23

TVD Reference: KELLY BUSHING @ 6002.01ft (Nabors 576 (26' RKB) kjs) level: 5976.01
 +N/-S +E/-W Northing Easting Latitude Longitude Slot
 0.00 0.00 1619645.26 2271227.09 39° 30' 22.530 N 108° 4' 59.483 W A5

REFERENCE INFORMATION

Co-ordinate (N/E) Reference: Well GM 512-23 - Slot A5, True North
 Vertical (TVD) Reference: KELLY BUSHING @ 6002.01ft (Nabors 576 (26' RKB) kjs)
 Section (VS) Reference: Slot - A5(0.00N, 0.00E)
 Measured Depth Reference: KELLY BUSHING @ 6002.01ft (Nabors 576 (26' RKB) kjs)
 Calculation Method: Minimum Curvature

PROJECT DETAILS: Garfield County, CO NAD83

Geodetic System: US State Plane 1983
 Datum: North American Datum 1983
 Ellipsoid: GRS 1980
 Zone: Colorado Central Zone

System Datum: Mean Sea Level

Plan: Wellbore #1

11:53, August 01 2011
 Created By: Janie Cooke