

LEGEND:

PROPOSED LOCATION

SWEPI LP

DRY SAGE UNIT #1-23
SECTION 23, T12N, R90W, 6th P.M.
LOT 17



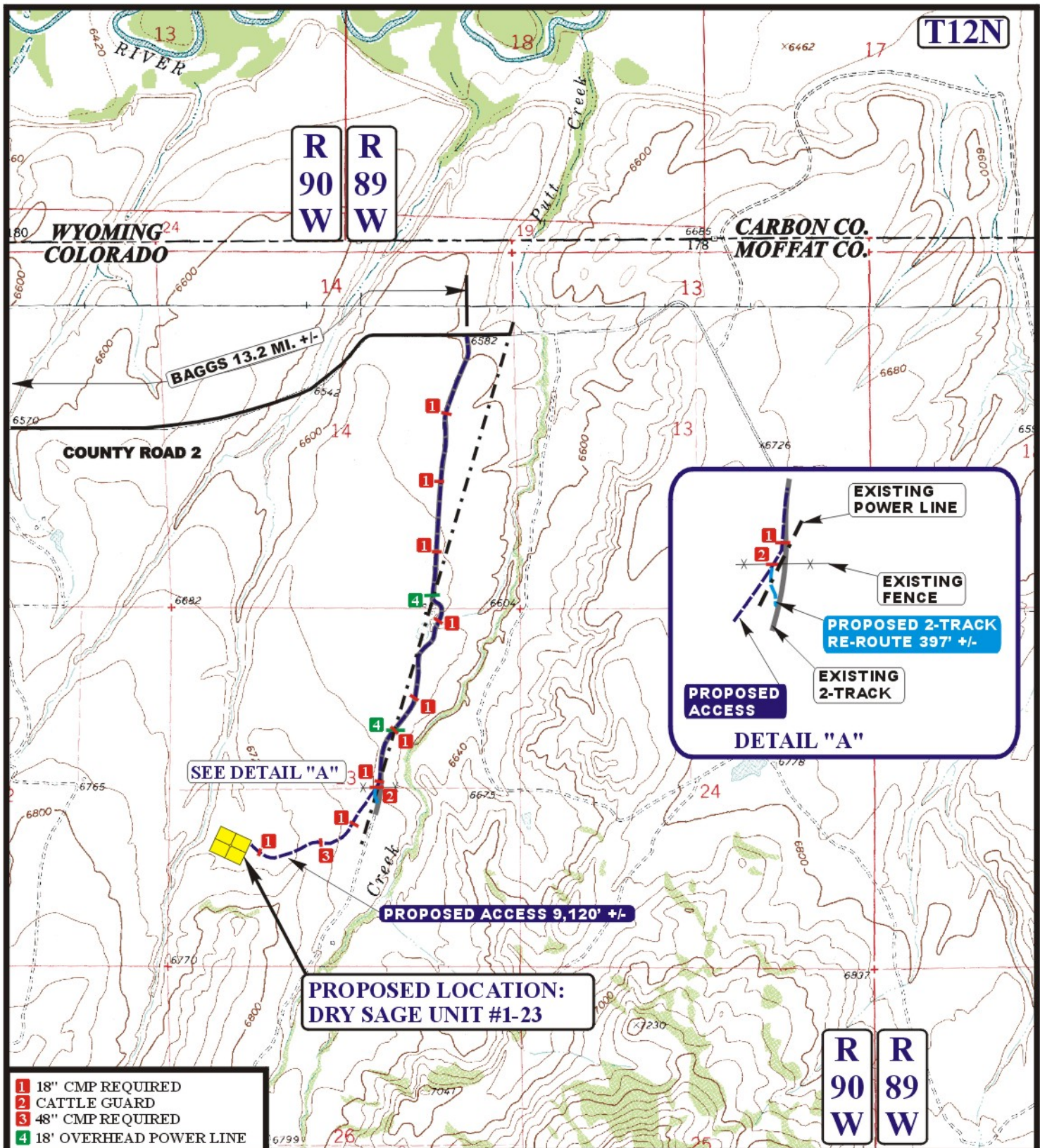
Uintah Engineering & Land Surveying
85 South 200 East Vernal, Utah 84078
(435) 789-1017 * FAX (435) 789-1813

ACCESS ROAD
MAP

07 19 11
MONTH DAY YEAR



SCALE: 1:100,000 **DRAWN BY: B.D.H.** **REVISED: 05-16-12**



LEGEND:

	EXISTING ROAD
	PROPOSED ACCESS ROAD
	EXISTING FENCE
	EXISTING 2-TRACK
	EXISTING OVER HEAD POWER LINE
	PROPOSED 2-TRACK RE-ROUTE



Utah Engineering & Land Surveying
85 South 200 East Vernal, Utah 84078
(435) 789-1017 * FAX (435) 789-1813



SWEPI LP

DRY SAGE UNIT #1-23
SECTION 23, T12N, R90W, 6th P.M.
LOT 17

ACCESS ROAD
MAP

07 19 11
MONTH DAY YEAR

B
TOPO

SCALE: 1" = 2000' DRAWN BY: B.D.H. REVISED: 05-16-12