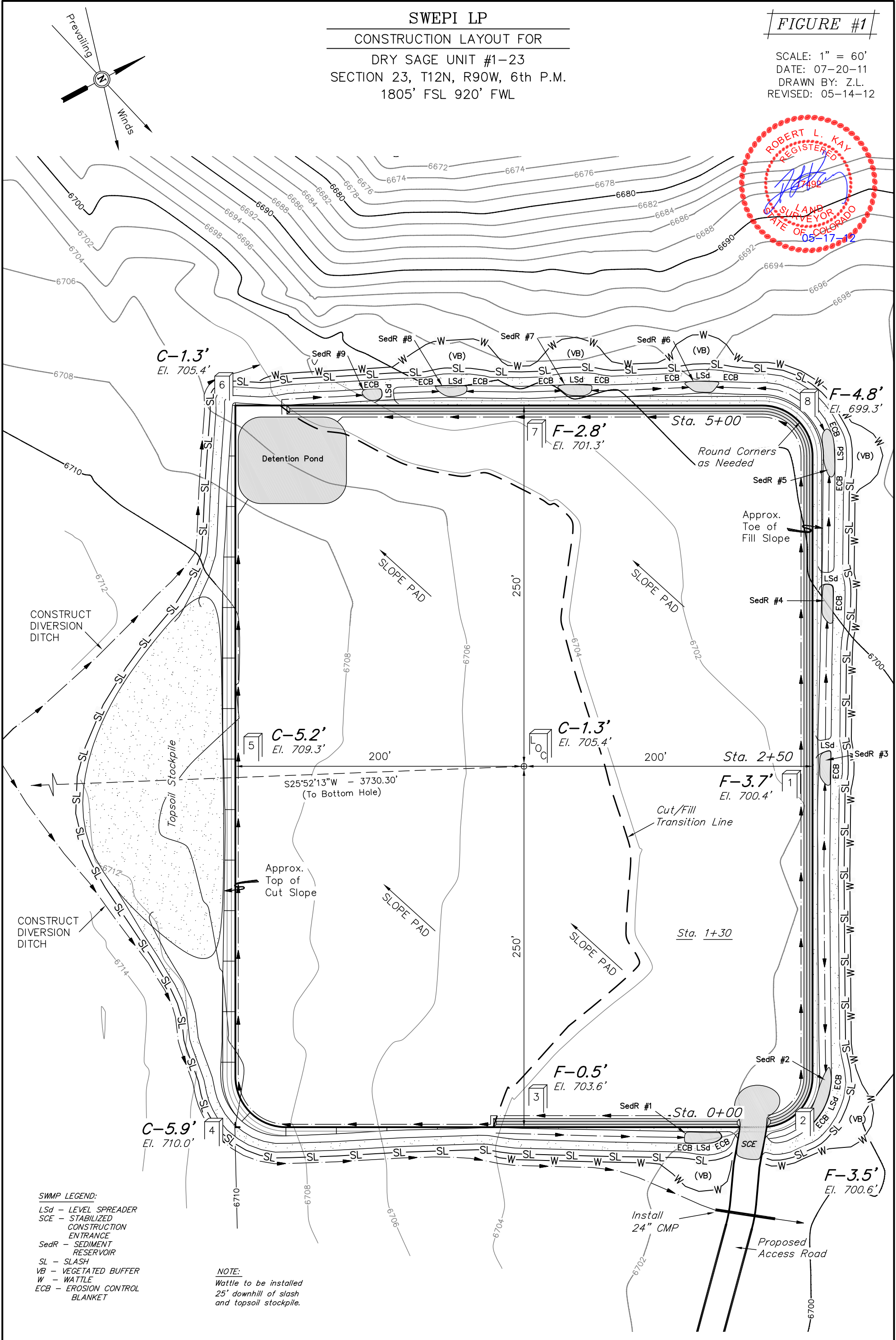


SWEPI LP
CONSTRUCTION LAYOUT FOR
DRY SAGE UNIT #1-23
SECTION 23, T12N, R90W, 6th P.M.
1805' FSL 920' FWL

FIGURE #1

SCALE: 1" = 60'
DATE: 07-20-11
DRAWN BY: Z.L.
REVISED: 05-14-12



- SWMP LEGEND:
- LSd - LEVEL SPREADER
 - SCE - STABILIZED CONSTRUCTION ENTRANCE
 - SedR - SEDIMENT RESERVOIR
 - SL - SLASH
 - VB - VEGETATED BUFFER
 - W - WATTLE
 - ECB - EROSION CONTROL BLANKET

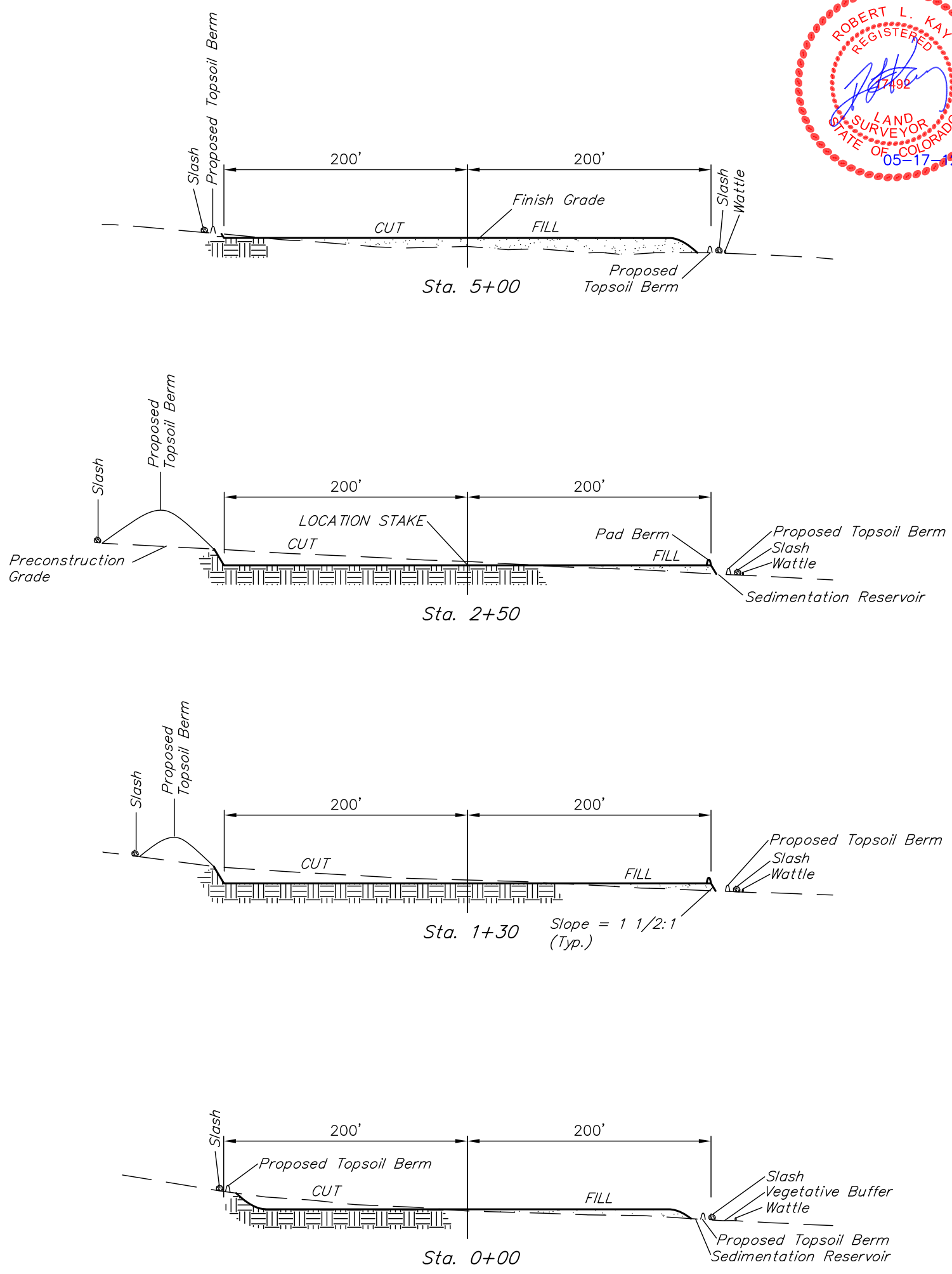
NOTE:
Wattle to be installed
25' downhill of slash
and topsoil stockpile.

Elev. Ungraded Ground At Loc. Stake = 6705.4'
FINISHED GRADE ELEV. AT LOC. STAKE = 6704.1'

1" = 40'
X-Section
Scale
1" = 100'
DATE: 07-20-11
DRAWN BY: Z.L.
REVISED: 05-14-12

SWEPI LP
CONSTRUCTION LAYOUT CROSS SECTIONS FOR
DRY SAGE UNIT #1-23
SECTION 23, T12N, R90W, 6th P.M.
1805' FSL 920' FWL

FIGURE #2



NOTE:
Topsoil should not be
Stripped Below Finished
Grade on Substructure Area.

APPROXIMATE ACREAGES
WELL SITE DISTURBANCE = ± 5.195 ACRES
ACCESS ROAD DISTURBANCE = ± 6.281 ACRES
TOTAL = ± 11.476 ACRES

* NOTE:
FILL QUANTITY INCLUDES
5% FOR COMPACTION

APPROXIMATE YARDAGES

(6") Topsoil Stripping = 3,870 Cu. Yds.
Remaining Location = 8,370 Cu. Yds.
TOTAL CUT = 12,240 CU. YDS.
FILL = 8,370 CU. YDS.

EXCESS MATERIAL = 3,870 Cu. Yds.
Topsoil = 3,870 Cu. Yds.
EXCESS UNBALANCE = 0 Cu. Yds.
(After Interim Rehabilitation)

UINTAH ENGINEERING & LAND SURVEYING
85 So. 200 East * Vernal, Utah 84078 * (435) 789-1017