

Set Marked Stone, Pile  
of Stones, Steel Post  
Lat: 40.935039  
Long: 108.296525

T11N, R97W, 6th P.M.

589°41'58"W - 5282.44' (Meas.)

Set Marked Stone, Pile  
of Stones, Steel Post  
Lat: 40.935142  
Long: 108.267911

ACE UNIT #15  
Elev. Ungraded Ground = 6676'

NOTE:  
SEE ADDENDUM TO LEGAL PLAT FOR  
EXISTING IMPROVEMENTS WITHIN 400'  
OF THE PROPOSED WELL DISTURBANCE.

Set Marked Stone,  
Steel Post 3" NW  
of Stone  
Lat: 40.927889  
Long: 108.287014

N00'02'W - 2640.00' (G.L.O.)

WEST - 5281.32' (G.L.O.)

# BASIS OF BEARINGS

# BASIS OF BEARINGS IS A G.P.S. OBSERVATION.

### LEGEND:

$$L = 90^\circ \text{ SYMBOL}$$

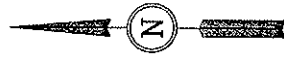
● = PROPOSED WELL HEAD.

▲ = SECTION CORNERS LOCATED.

PDOP = 2.3

NAD 83 (SURFACE LOCATION)  
LATITUDE = 40°55'57.49" (40.932636)  
LONGITUDE = 108°17'04.68" (108.284633)  
NAD 27 (SURFACE LOCATION)  
LATITUDE = 40°55'57.62" (40.932672)  
LONGITUDE = 108°17'02.34" (108.283033)

N00.02'W - 5280.00' (G.L.O.)



SCAC

CERTIFICATE

THIS IS TO CERTIFY THAT THE ABOVE ~~DATA~~ <sup>REPORT</sup> WAS PREPARED FROM FIELD NOTES OF ACTUAL SURVEYS MADE BY ME OR UNDER MY SUPERVISION AND THAT THE SAME ARE TRUE AND CORRECT TO THE BEST OF MY KNOWLEDGE AND BELIEF. CLARENCE G. LEE

REVISED: 04-14-10 S.L.  
REVISED: 11-04-08 C.H.

UNTAH ENGINEERING & LAND SURVEYING  
85 SOUTH 200 EAST - VERNAL, UTAH 84078  
(435) 789-1017

SCALE 1" = 1000'

DATE SURVEYED: 08-05-08	DATE DRAWN: 08-28-
----------------------------	-----------------------

## REFERENCES

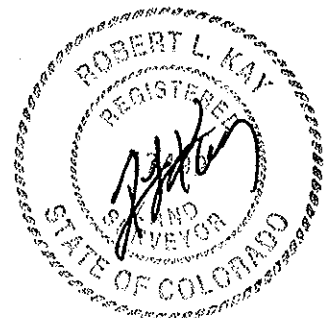
G.L.O. PLAT

WEATHER HOT

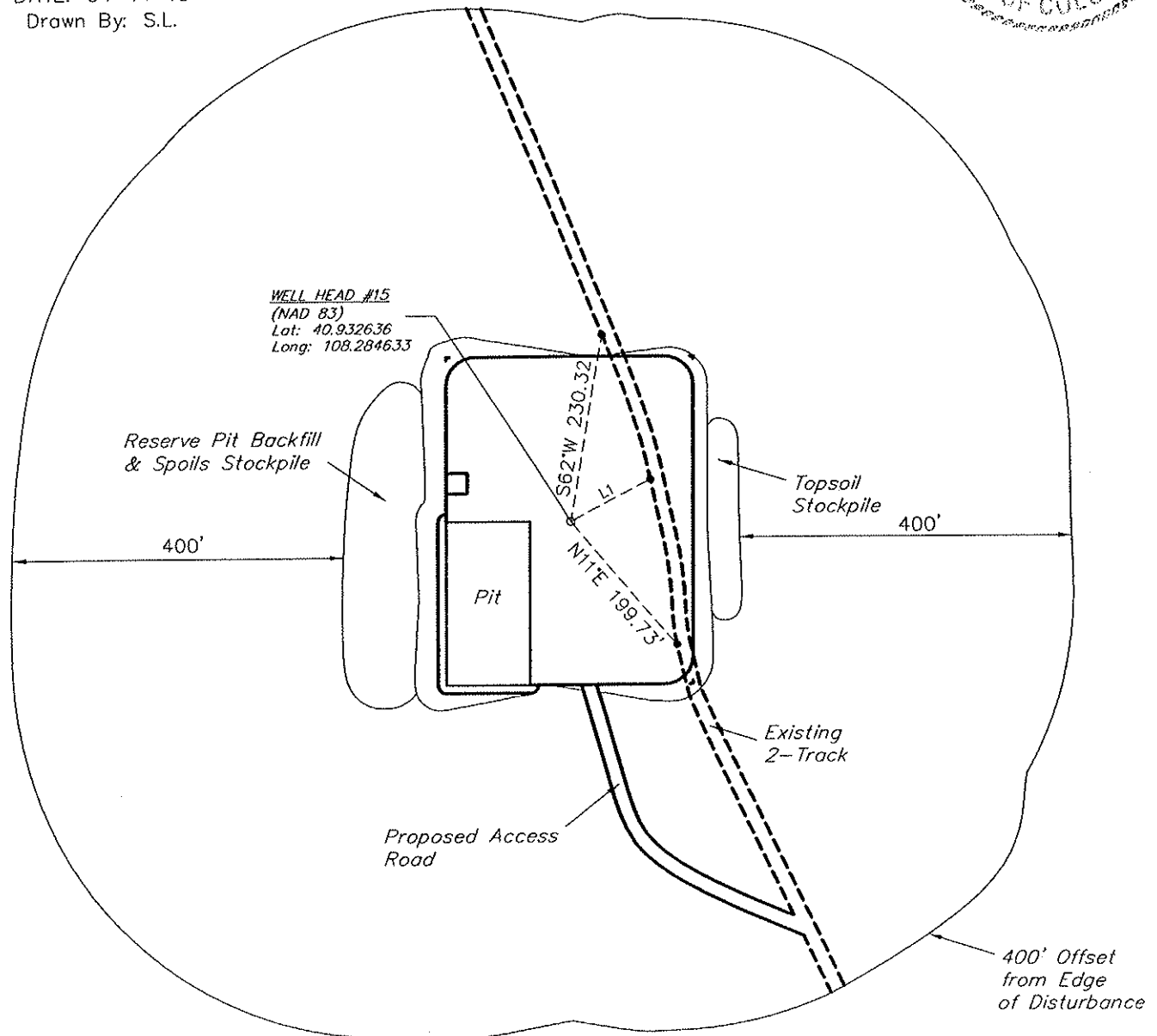
WEXPRO COMPANY

**WEXPRO COMPANY**  
**ADDENDUM TO LEGAL PLAT FOR**

ACE UNIT #15  
 SECTION 10, T11N, R97W, 6th P.M.  
 890' FNL 659' FWL



SCALE: 1" = 200'  
 DATE: 04-14-10  
 Drawn By: S.L.



LINE TABLE		
LINE	DIRECTION	LENGTH
L1	N65°10'32"W	110.73'