

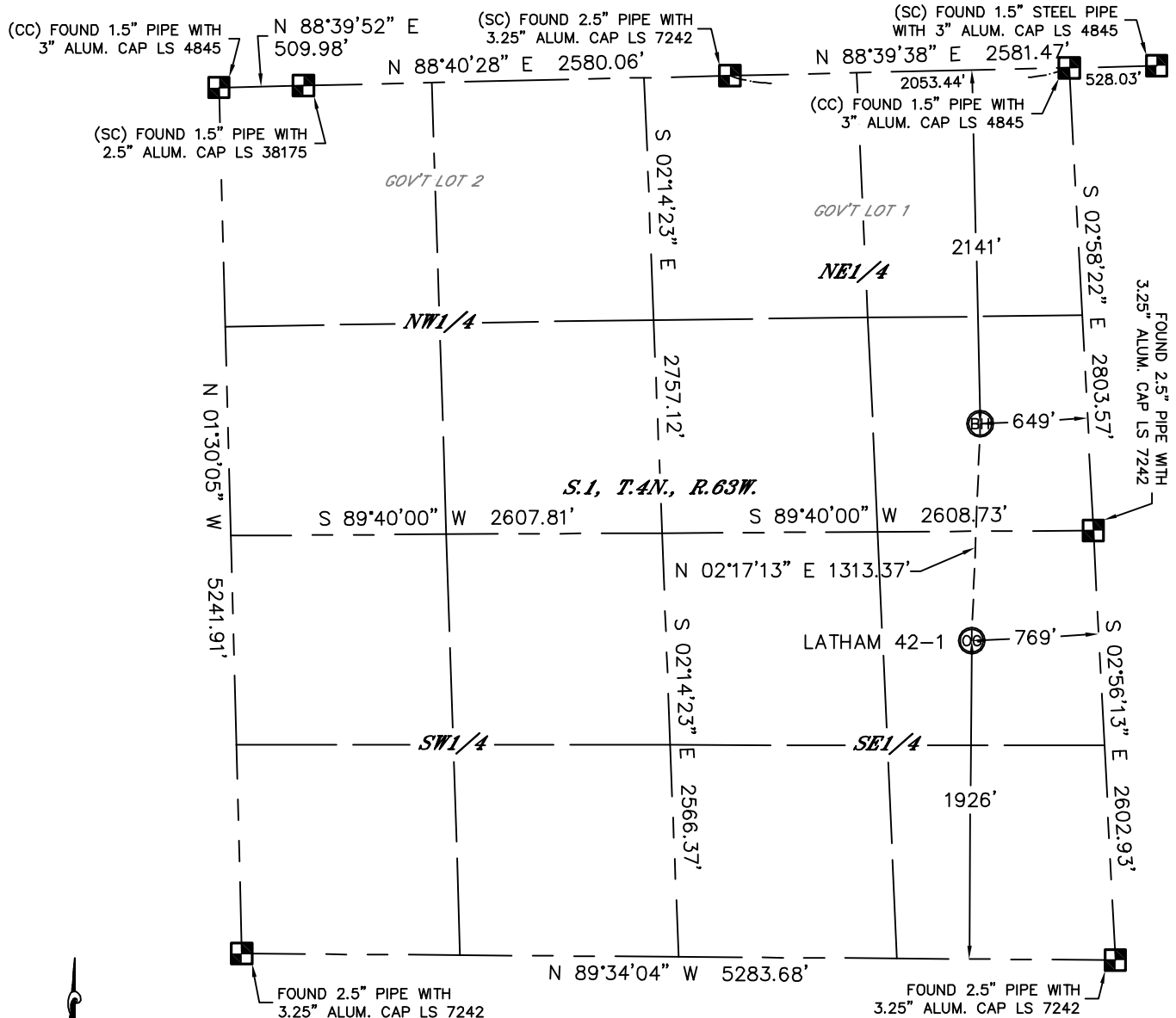


Lat40°, Inc. 1635 Foxtrail Drive, Suite 325 Loveland, CO 970-776-3321

WELL LOCATION CERTIFICATE

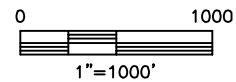
SECTION: 1
TOWNSHIP: 4N
RANGE: 63W

THIS MAP DOES NOT REPRESENT A BOUNDARY SURVEY



In accordance with a request from Keith Caplan with BONANZA CREEK ENERGY, INC. Lat40°, Inc. has determined the surface location of the LATHAM 42-1 to be 1926' from the SOUTH line and 769' from the EAST line and the bottom hole to be 2141' from the NORTH line and 649' from the EAST line as measured at right angles from the section lines of Section 1, Township 4 North, Range 63 West of the Sixth Principal Meridian, County of Weld, State of Colorado.

I hereby state that this Well Location Certificate was prepared by me, or under my direct supervision, that the fieldwork was completed on 5/9/2012, for and on behalf of BONANZA CREEK ENERGY, INC. That this is not a Land Survey Plat or an Improvement Survey Plat, and that it is not to be relied upon for establishment of fence, building, or other future improvement lines.



NOTE:

- 1) Bearings shown are Grid Bearings of the Colorado State Plane Coordinate System, North Zone, North American Datum 1983/2007. The lineal dimensions as contained herein are based upon the "U.S. Survey Foot."
- 2) Ground elevations are based on an observed GPS elevation (NAVD 1988 DATUM).
- 3) IMPROVEMENTS: See LOCATION DRAWING for all visible improvements within 400' of disturbed area.
- 4) SURFACE USE: RANGE LAND
- 5) INSTRUMENT OPERATOR: WYATT HALL

SURFACE LOCATION
 LATITUDE: 40.33959°N
 LONGITUDE: 104.37982°W
 PDOP: 1.2
 ELEV: 4545'
 1/4,1/4: NE1/4SE1/4
 NEAREST PROPERTY LINE: 462'± SW

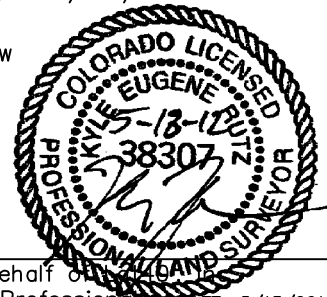
BOTTOM HOLE
 LATITUDE: 40.34319°N
 LONGITUDE: 104.37957°W
 1/4,1/4: SE1/4NE1/4

NOTE

According to Colorado law, you must commence any legal action based upon any defect in this W.L.C. within three years after you discover such defect. In no event, may any action based upon any defect in this survey be commenced more than ten years after the date of the certificate shown hereon. (13-80-105 C.R.S.)

LEGEND

- = ALIQUOT MONUMENT AS DESCRIBED
- = CALCULATED POSITION



Kyle E. Rutz—On behalf of
 Colorado Licensed Professional
 Land Surveyor No. 38307

DATE: 5/15/2012
 PROJECT#: 2011338