



410 17th Street, Suite 1500
Denver, CO 80202
(720) 440-6100 phone
(720) 305-0804 fax

Bonanzacr.com

06 June 2012

Colorado Oil and Gas Conservation
Commission
The Chancery Building
1120 Lincoln Street, Suite 801
Denver, CO 80203

Attn: Thom Kerr, Director

Re: Notice of 318A(I).a(4).C Well Proposal
Latham R-1
SHL: NESE (1924' FSL, 784' FEL) Sec 01-4N-63W, 6TH PM
Producing Interval: S/2 NE/4 & N/2 SE/4 Sec 01-4N-63W, 6TH PM
Weld County, Colorado

Mr. Director:

Bonanza Creek Energy, Inc. (Bonanza) intends to permit, drill and operate the referenced Niobrara-Codell Well. As defined by Colorado Oil and Gas Conservation Commission (COGCC) Rule 318A(I).a.(4)C., Bonanza proposes the following wellbore spacing unit:

S/2 NE/4 & N/2 SE/4 Sec 01-4N-63W, 6TH PM, Weld County, CO – 160 Acres

Bonanza is the sole mineral lease holder in the proposed spacing unit, and no mineral owner notifications were required.

Bonanza respectfully requests that you review the enclosed wellbore spacing unit documentation and approve the referenced APD.

Please do not hesitate to call or email me, directly, at (720) 440-6112 or KCaplan@BonanzaCRK.com, should you have any questions pertaining to this matter.

Thank you for your cooperation.

Sincerely,

A handwritten signature in blue ink that reads 'Keith S. Caplan'.

Keith S. Caplan
Sr. Operations Technician
Bonanza Creek Energy, Inc.

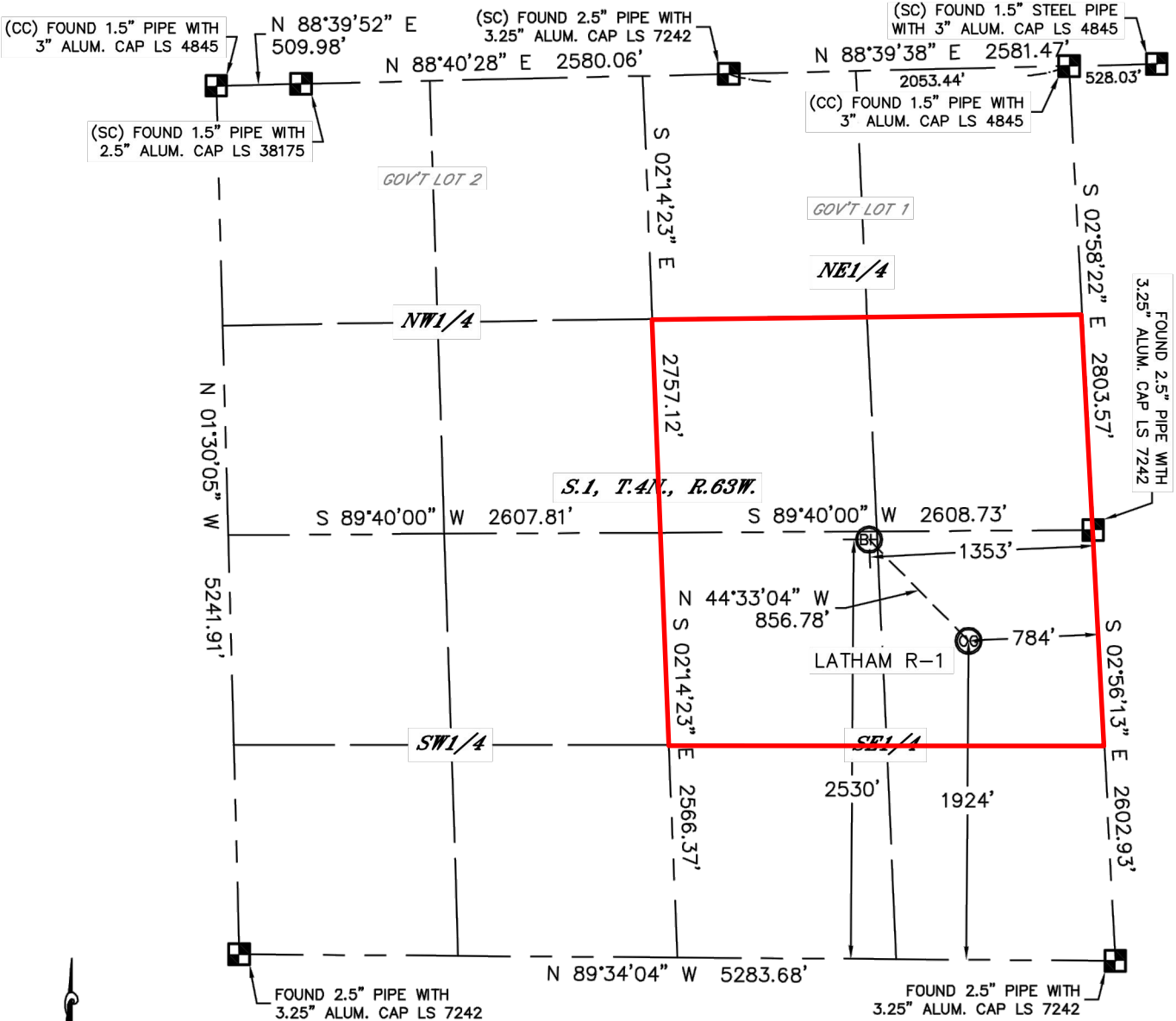


Lat40°, Inc. 1635 Foxtrail Drive, Suite 325 Loveland, CO 970-776-3321

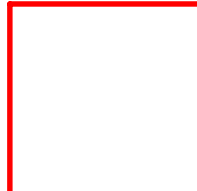
WELL LOCATION CERTIFICATE

SECTION: 1
TOWNSHIP: 4N
RANGE: 63W

THIS MAP DOES NOT REPRESENT A BOUNDARY SURVEY



In accordance with a request from Keith Caplan with BONANZA CREEK ENERGY, INC. Lat40°, Inc. has determined the surface location of the LATHAM R-1 to be 1924' from the SOUTH line and 784' from the EAST line and the bottom hole to be 2530' from the SOUTH line and 1353' from the EAST line as measured at right angles from the section lines of Section 1, Township 4 North, Range 63 West of



Wellbore Spacing Unit Outline



Wellbore Spacing Unit Map

06 June 2012 ksc

Latham R-1
S/2 NE/4 & N/2 SE/4 Sec 1 T4N R63W 6th PM
Weld County, Colorado