

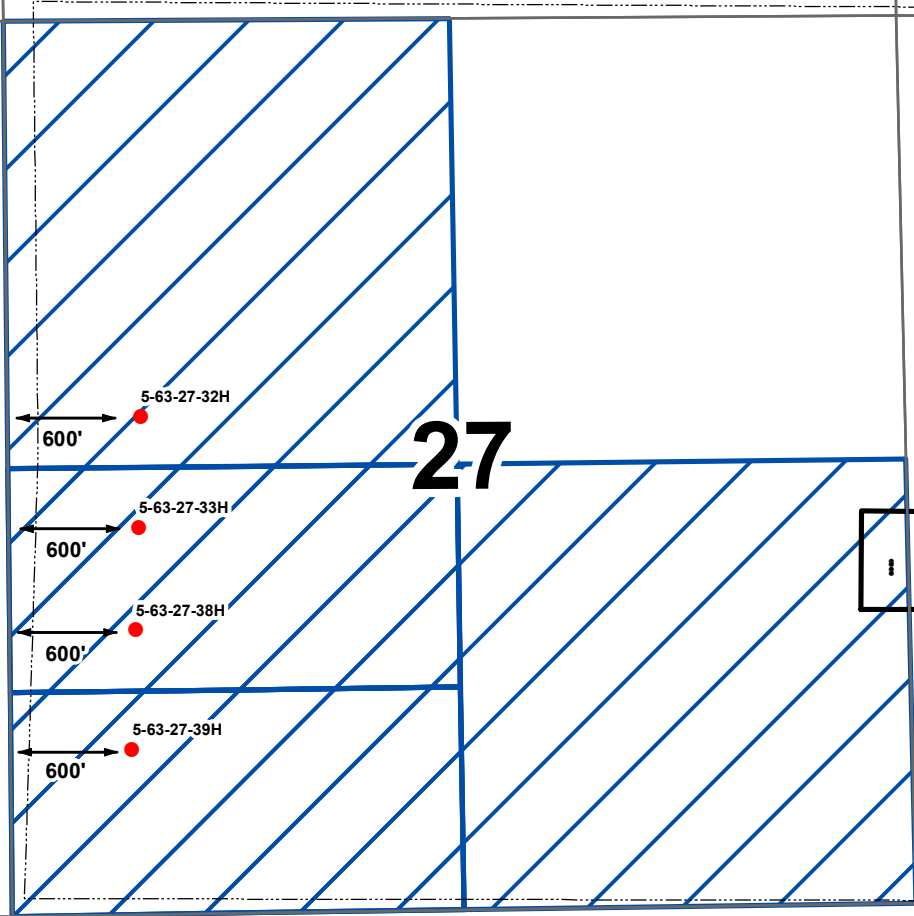
**70 Ranch 5-63-27**  
**Lease Boundary Map**  
 CHAMPLIN PETROLEUM CO  
 T.5N., R.63W. 6th P.M  
 Sec 27; NW, SE, SW, N2SW, S2SW  
 Sec 23; NW, SE  
 800 Acres

**5N/63W**

**28**

**27**

**26**



- 70 RANCH 5-63-27 BHLs
- Survey Section Lines
- 70 RANCH 5-63-27 PAD
- CHAMPLIN PETROLEUM CO Lease



**Lease Bondary Map**

70 Ranch 5-63-27  
 NESE, Section 27, T5N R63W  
 Weld County, Colorado