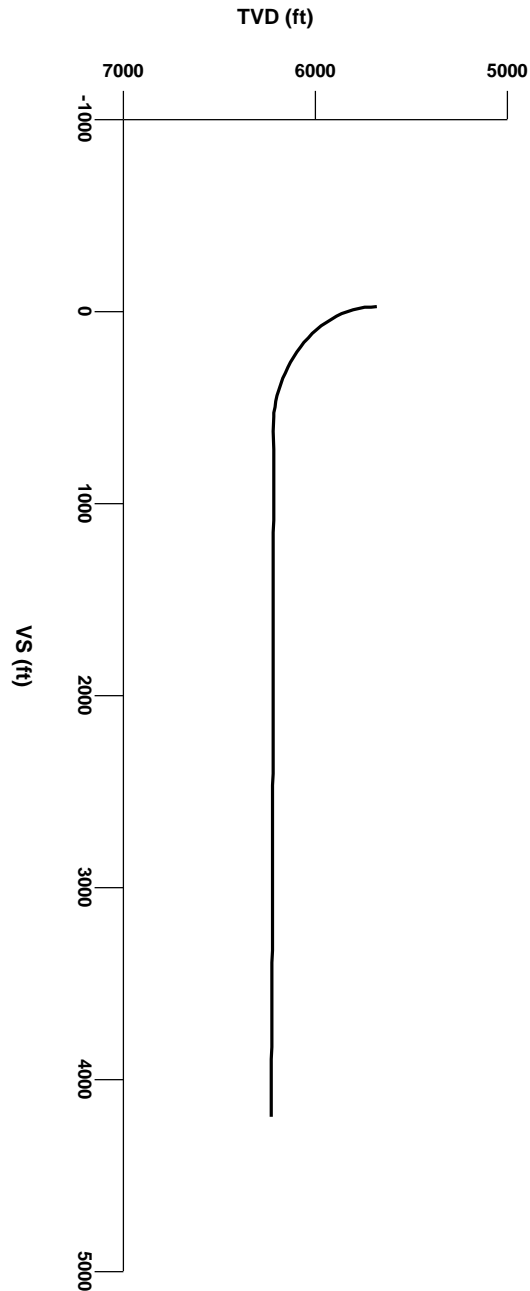




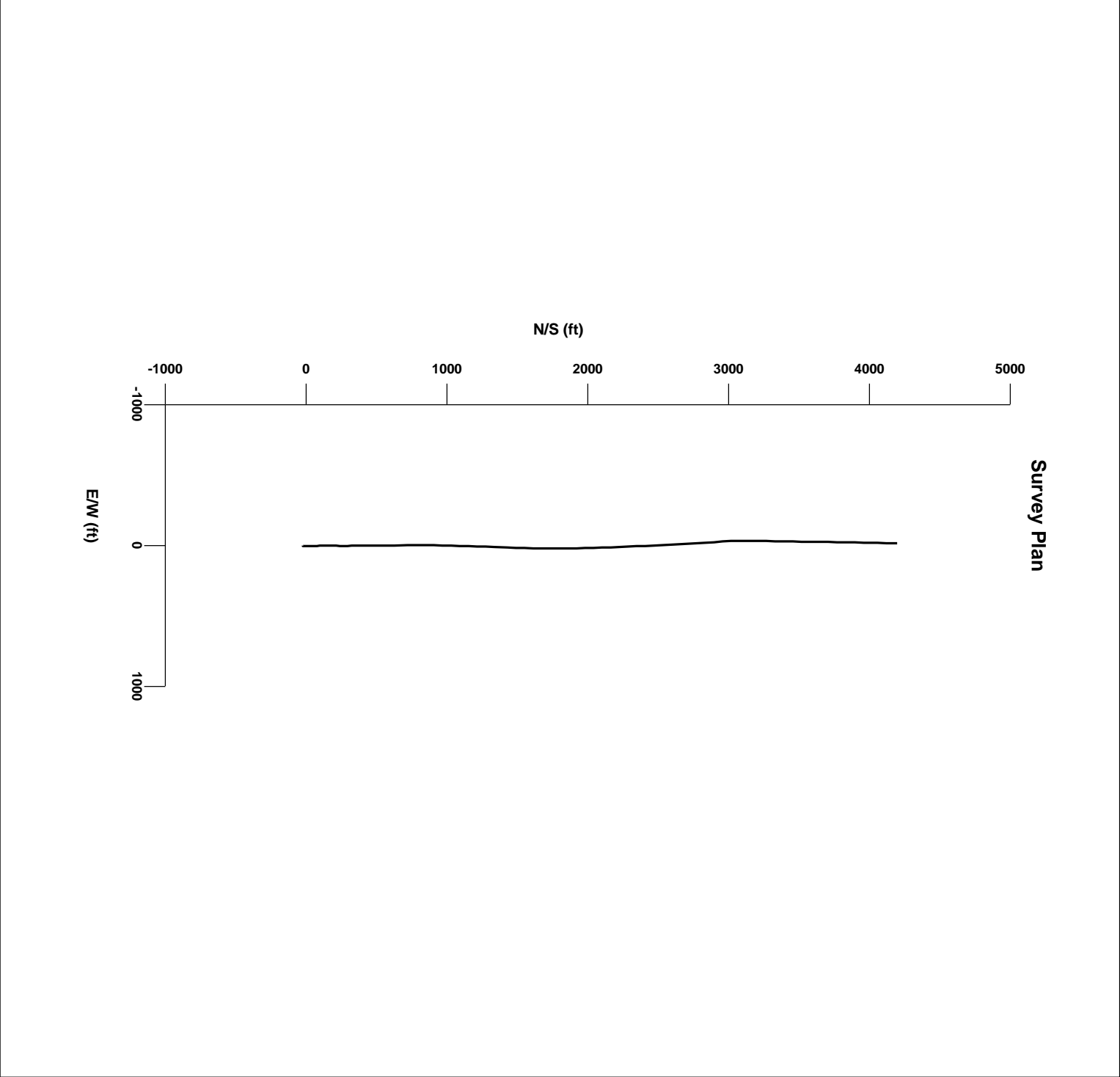
LOG created using Lplot VH Version 3.0, March 27, 2012, Copyright (C) 1999-2009 Pason Systems Corp.

**OPERATOR:** CONTINENTAL RESOURCES  
**WELL:** REINES 1-1H  
**PRINT DATE:** 3/27/2012 10:44:24 AM

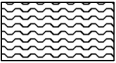
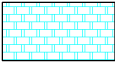

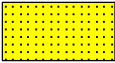
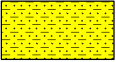
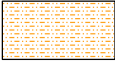
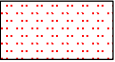
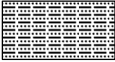
**LOCATION:** SECTION 1 T7N R60W  
**COUNTY:** WELD  
**STATE:** COLORADO







Survey Elevation





**LITHOLOGIES**

	Bentonite		Chalk		Marl		Sandstone
	Shaly Sandstone		Shaly Siltstone		Siltstone		Silty Shale

**ENGINEERING SYMBOLS**

	Casing		Casing		Connection Gas		Midnight Depth
---	--------	---	--------	---	----------------	---	----------------

**BAR SYMBOLS**

	Rotating		Sliding
---	----------	---	---------

GAS			ROP	
0	UNITS	5000	0	MIN/FT
C1			8.75"	
0	ppm	500000	HDBS	
C2			FXD55M	
0	ppm	500000	in @ 5700	
C3				
0	ppm	500000		
C4				
0	ppm	500000		
C5				
0	ppm	500000		

Bit #3  
8.75"  
HDBS  
FXD55M  
in @ 5700

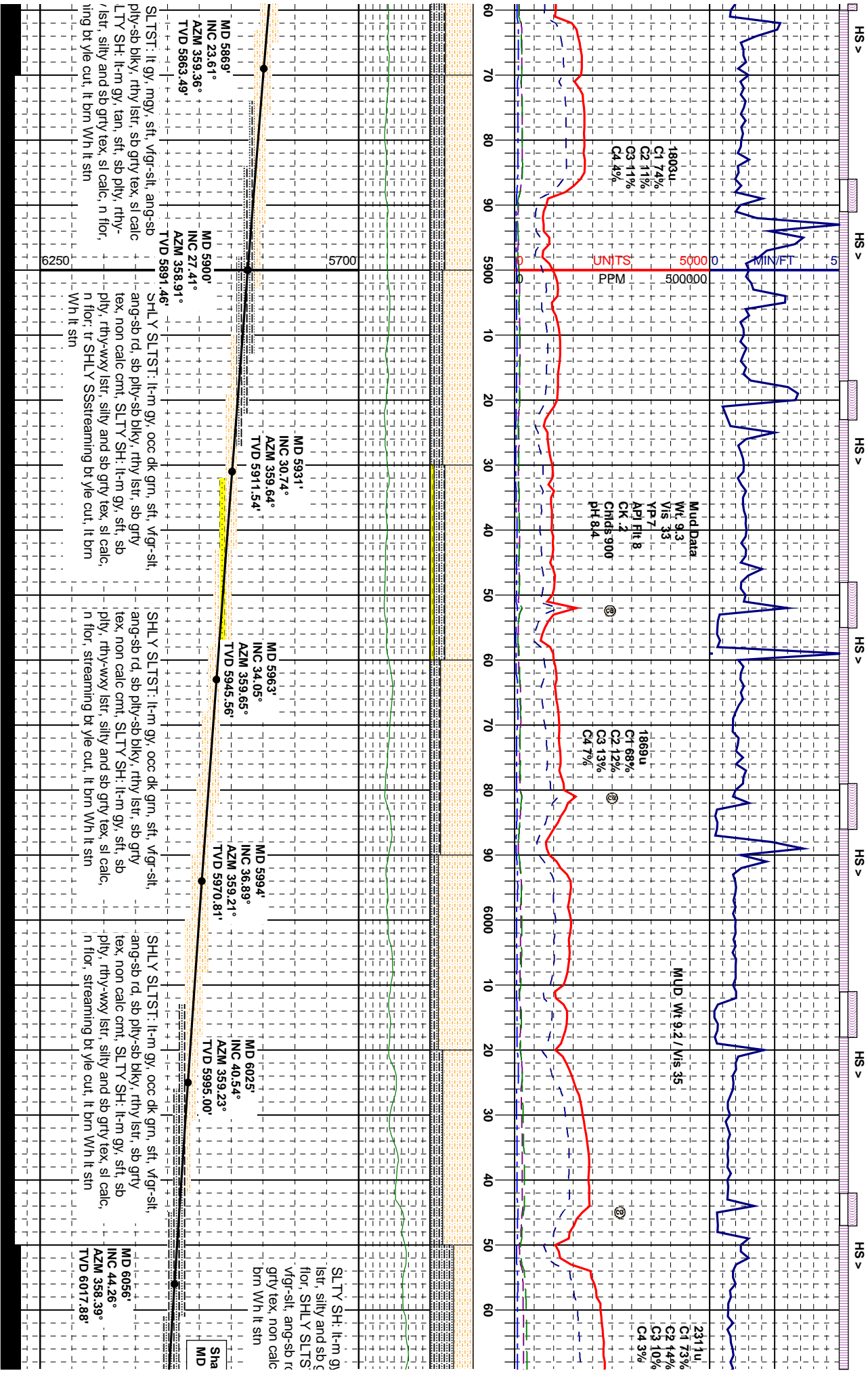
Trip Gas= 3204u

1517u  
C1 7.4%  
C2 8%  
C3 10%  
C4 8%

MUD Wt 9.5 / Vis 33

MUD Wt 9.3 / Vis 33

1869u  
C1 73%  
C2 11%  
C3 10%  
C4 5%



SLTST: lt gy, mgy, sft, vgr-slt, ang-sb  
ply-sb blkly, rthy lstr, sb grty tex, sl calc  
LTY SH: lt-m gy, tan, sft, sb ply, rthy-  
ply, rthy-wxy lstr, silty and sb grty tex, sl calc,  
n flor, tr SHLY SSsteaming bt yle cut, lt brn  
Wh lt sin

MD 5869'  
INC 23.61°  
AZM 359.36°  
TVD 5863.49'

MD 5900'  
INC 27.41°  
AZM 358.91°  
TVD 5891.46'

MD 5931'  
INC 30.74°  
AZM 359.64°  
TVD 5911.54'

MD 5963'  
INC 34.05°  
AZM 359.65°  
TVD 5945.56'

MD 5994'  
INC 36.89°  
AZM 359.21°  
TVD 5970.81'

MD 6025'  
INC 40.54°  
AZM 359.23°  
TVD 5995.00'

MD 6056'  
INC 44.26°  
AZM 358.39°  
TVD 6017.88'

SLTST: lt-m gy, occ dk grn, sft, vgr-slt,  
ang-sb rd, sb ply-sb blkly, rthy lstr, sb grty  
tex, non calc cnt, SLTY SH: lt-m gy, sft, sb  
ply, rthy-wxy lstr, silty and sb grty tex, sl calc,  
n flor, streaming bt yle cut, lt brn Wh lt sin

SLTY SH: lt-m gy  
lstr, silty and sb c  
flor, SHLY SLTS  
vgr-slt, ang-sb rc  
grty tex, non calc  
brn Wh lt sin

Sh  
MD

HS >

HS >

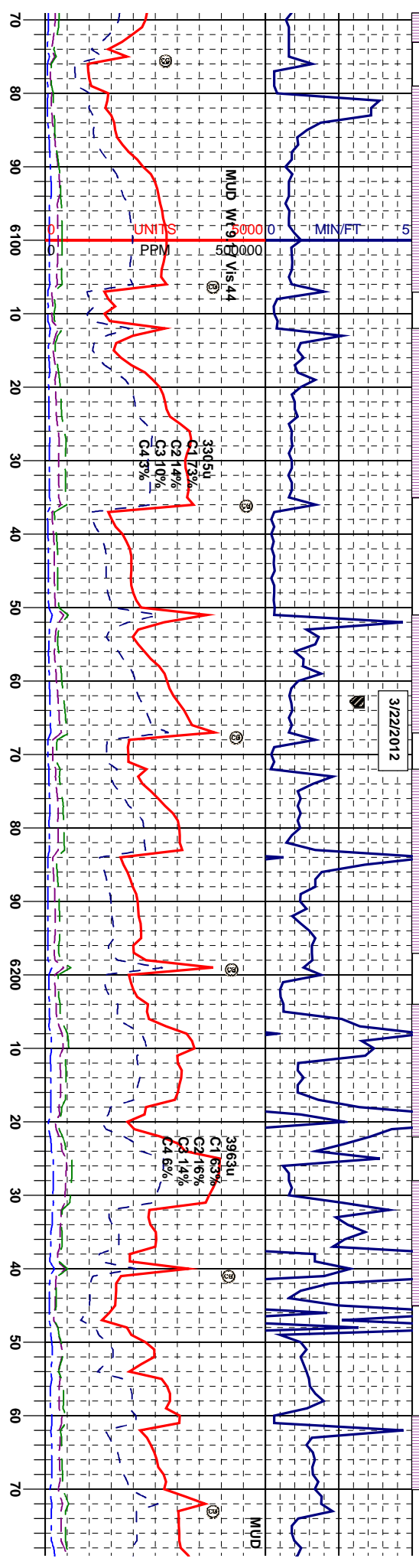
HS >

HS >

HS >

HS >

-10G



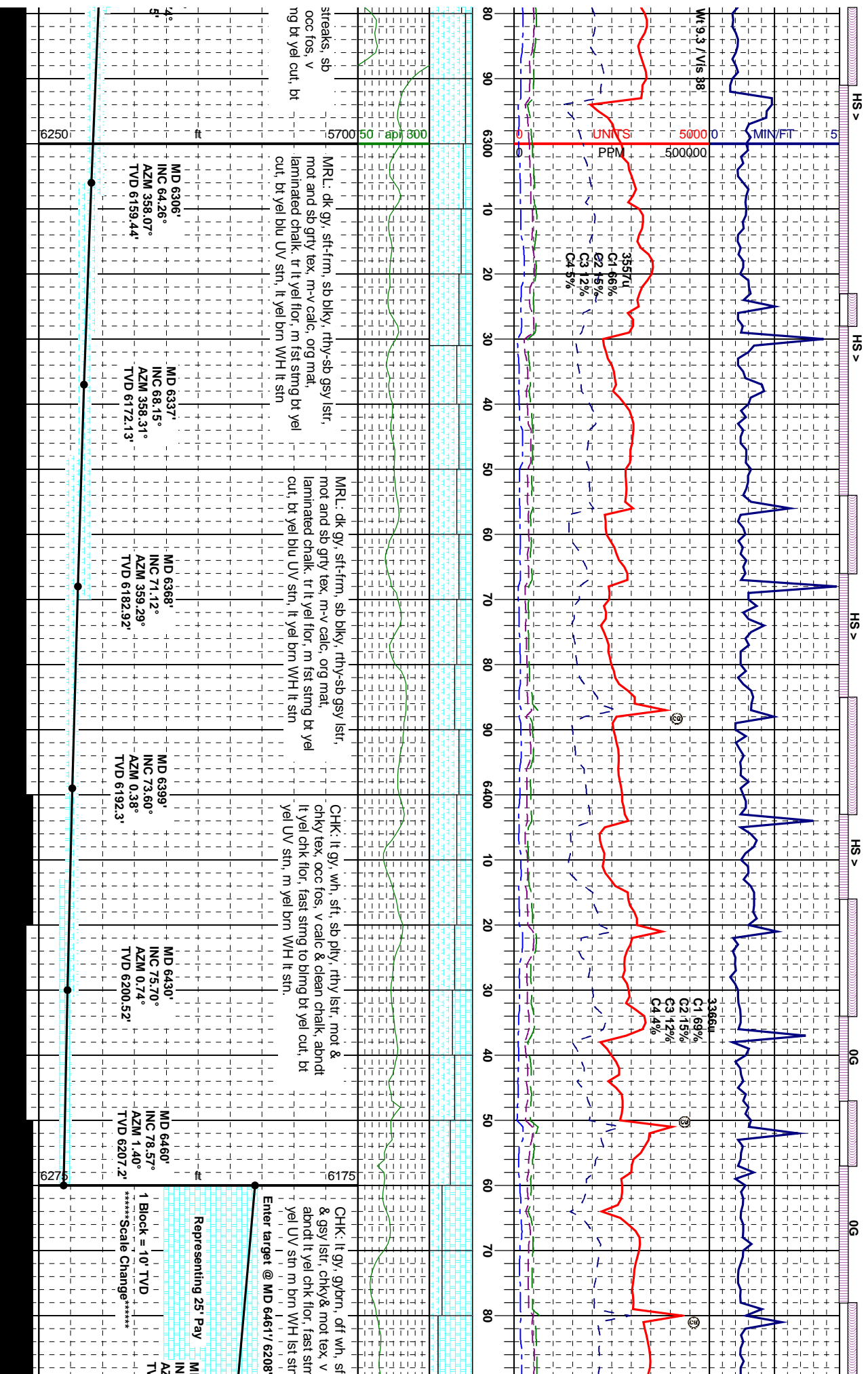
SLTY SH: lt-m gy, sft-frn, sb ply, rthy-wxy  
lstr, silty and sb grty tex, occ aren, sl calc, n  
fior, SHLY SLTST: lt-m gy, occ dk stri, sft,  
vigr-slt, ang-sb rd, sb ply-sb biky, rthy lstr, sb  
grty tex, non calc cmt, streaming bt yle cut, lt  
brn wh lt stn

SLTY SH: lt-m gy, sft-frn, sb ply, rthy-wxy  
lstr, silty and sb grty tex, occ aren, sl calc,  
CHK: lt gy, off wh, sft & brt, sb ply, rthy lstr,  
spty tex, v calc, w/ scat lt yel chk fior, MRL:  
m-dk gy, frn, brt, sb biky, rthy-sb gsy lstr,  
mot & spty tex: abnt bent w/ dsm pyr, fast  
sting bt yel UV sin, lt brn wh lt stn.

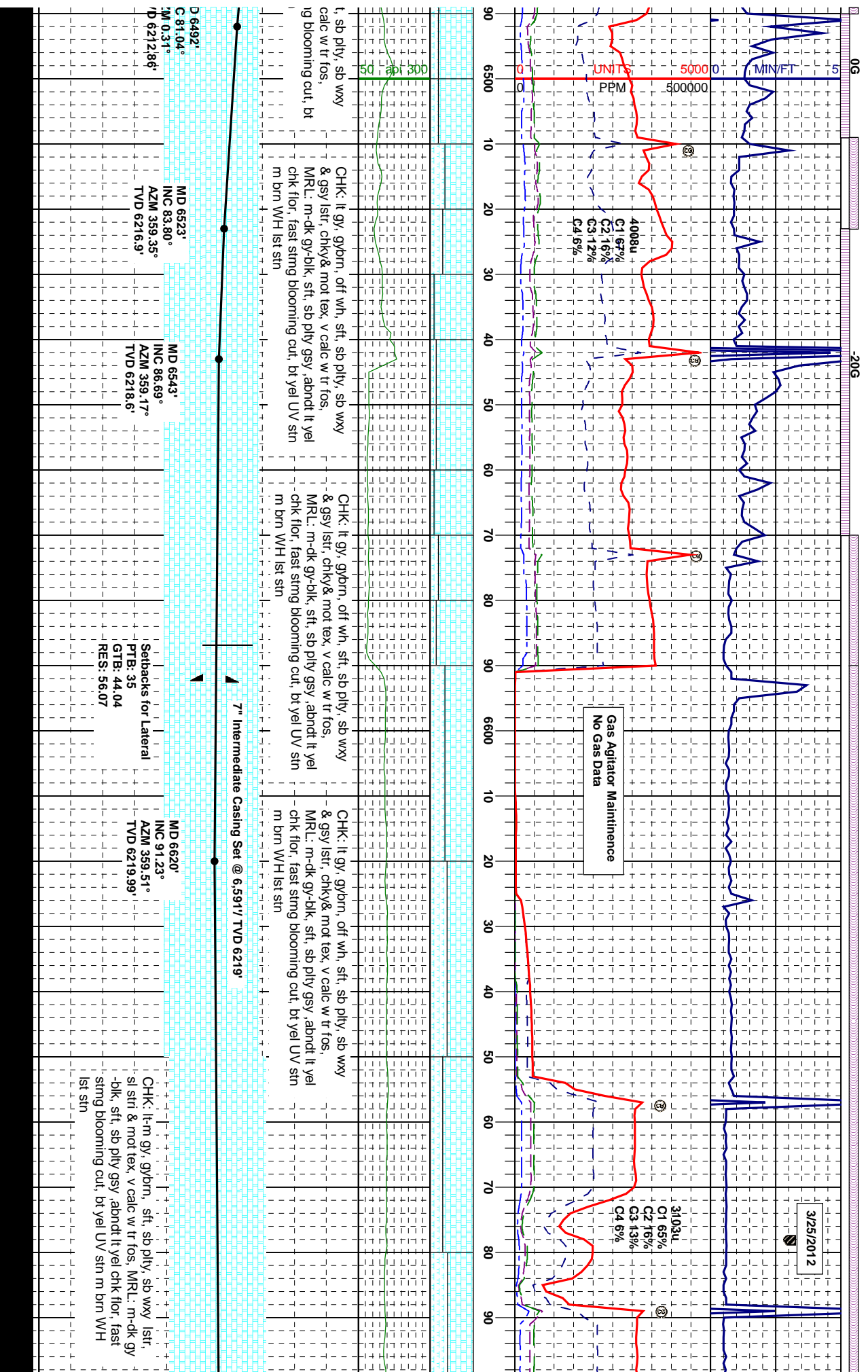
CHK: lt gy, off wh, sft & brt, sb ply, rthy lstr,  
spty tex, v calc, w/ scat lt yel chk fior, MRL:  
m-dk gy, frn, brt, sb biky, rthy-sb gsy lstr,  
mot & spty tex: abnt bent w/ dsm pyr, fast  
sting bt yel UV sin, lt brn wh lt stn.

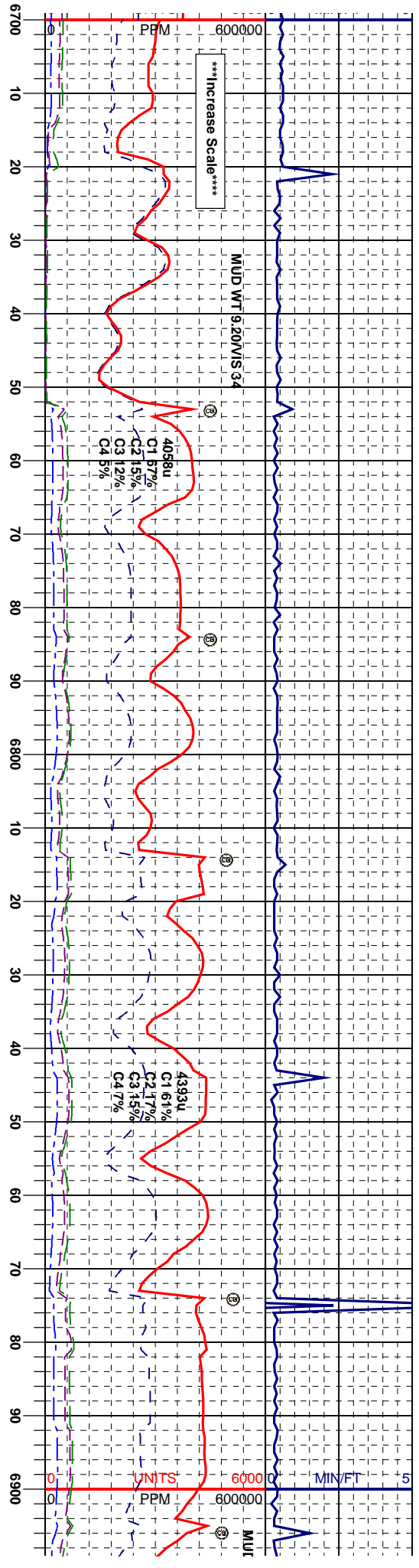
CHK: lt gy, off wh, w/ m-dk gy,  
biky, rthy lustr, mot & chky tex,  
calc, scat lt yel chk fior, fast str  
yel VU sin, lt yelbrn wh stn

Iron Springs Top 6079/TVD 6030'	MD 6087' INC 47.26° AZM 359.40° TVD 6039.51'	MD 6119' INC 50.68° AZM 0.25° TVD 6060.51'	MD 6149' INC 53.36° AZM 0.97° TVD 6078.97'	MD 6180' INC 56.05° AZM 1.83° TVD 6096.88'	MD 6212' INC 58.50° AZM 1.58° TVD 6114.2'	MD 6243' INC 60.19° AZM 359.72° TVD 6130.0'	MD 6275' INC 61.63° AZM 357.7° TVD 6145.
------------------------------------	---	---	---	---	--	--	---

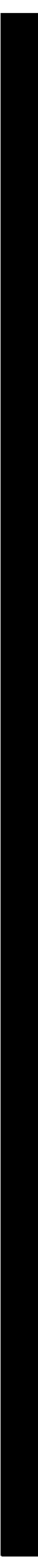




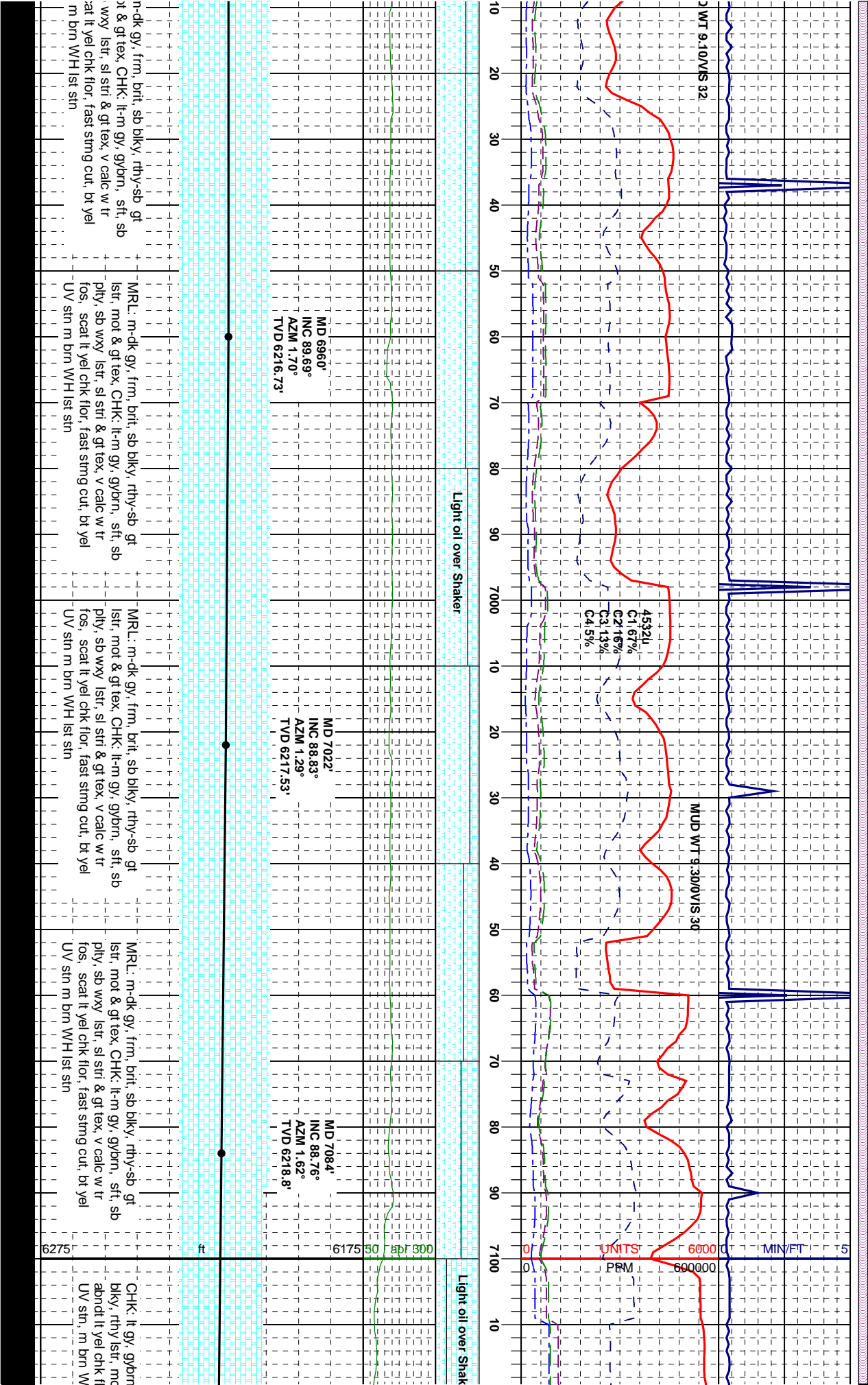


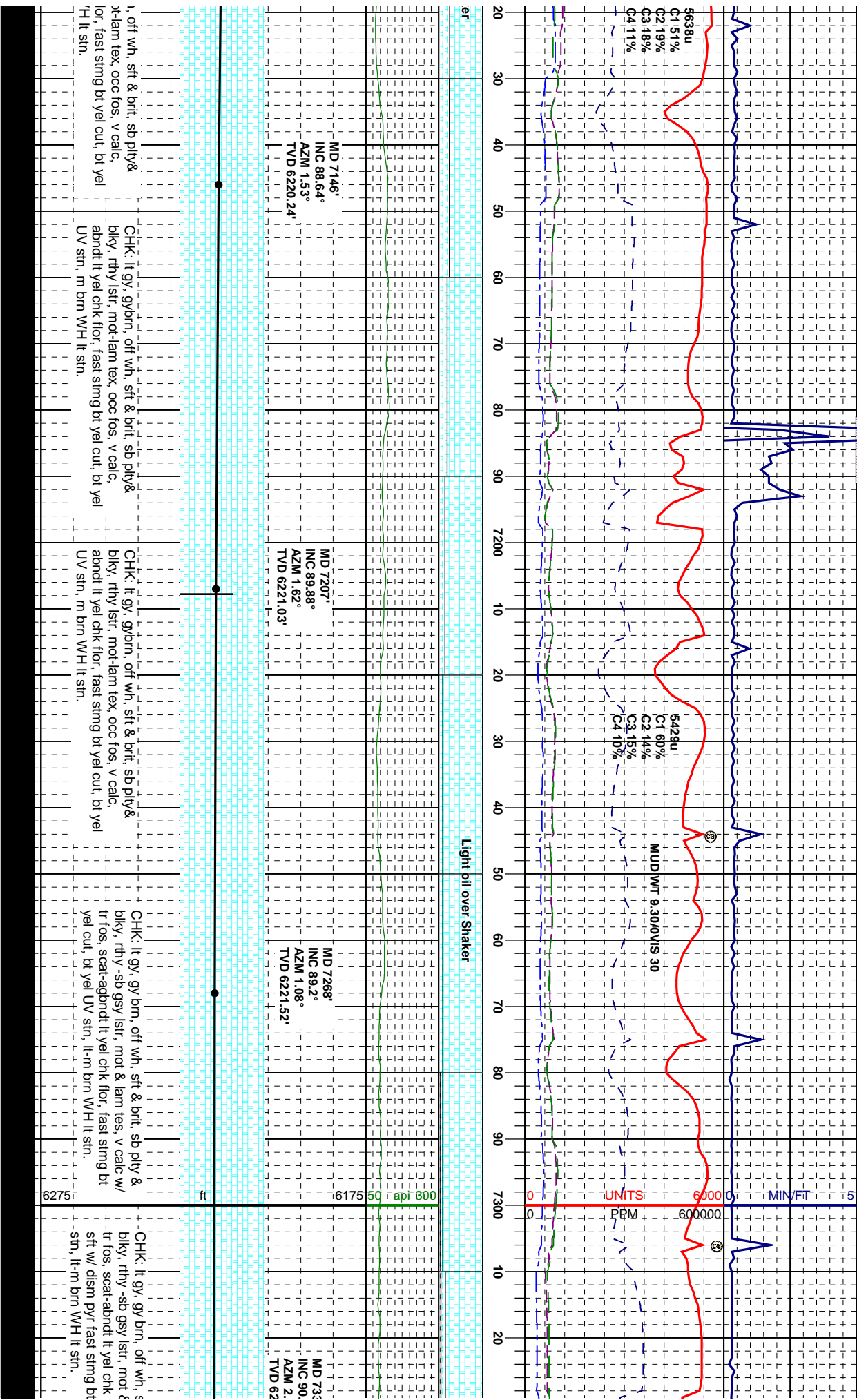


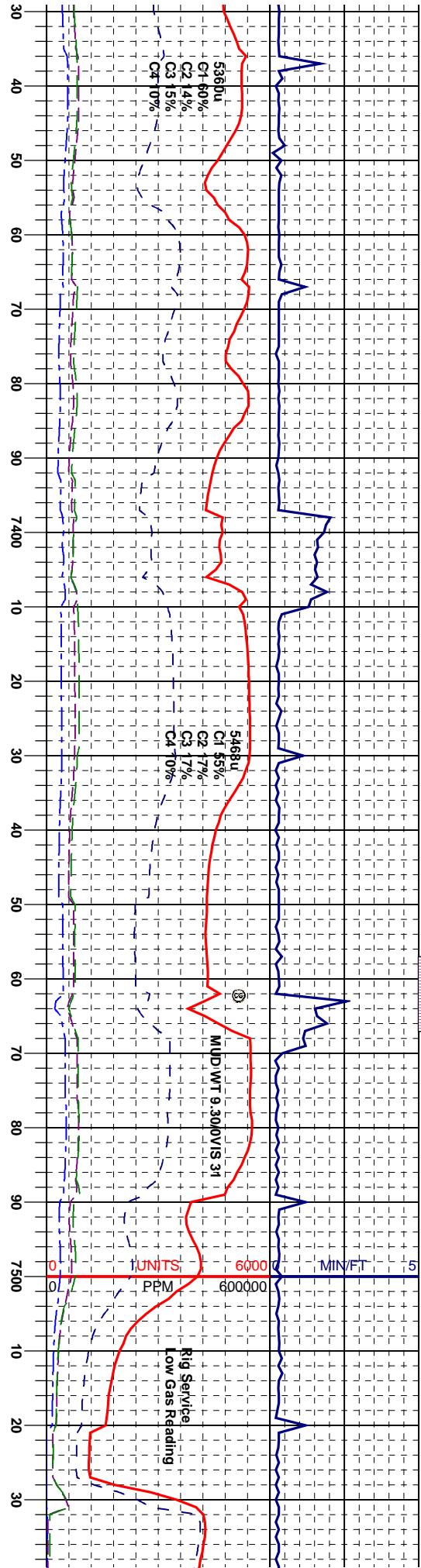
CHK: lt-m gy, gybrn, sft, sb ply, sb wxy lstr, sl str & mot tex, v calc w tr fos, MRL: m-dk gy -blk, sft, sb ply gsy, abndt lt yel chk flor, fast string blooming cut, bt yel UV sin m brn WH lstr sin			
MRL: m-dk gy, frm, brit, sb blk, rthy-sb gt lstr, mot & gt tex, CHK: lt-m gy, gybrn, sft, sb ply, sb wxy lstr, sl str & gt tex, v calc w tr fos, scat lt yel chk flor, fast string cut, bt yel UV sin m brn WH lstr sin			
MRL: m-dk gy, frm, brit, sb blk, rthy-sb gt lstr, mot & gt tex, CHK: lt-m gy, gybrn, sft, sb ply, sb wxy lstr, sl str & gt tex, v calc w tr fos, scat lt yel chk flor, fast string cut, bt yel UV sin m brn WH lstr sin			
MRL: m-dk gy, frm, brit, sb blk, rthy-sb gt lstr, mot & gt tex, CHK: lt-m gy, gybrn, sft, sb ply, sb wxy lstr, sl str & gt tex, v calc w tr fos, scat lt yel chk flor, fast string cut, bt yel UV sin m brn WH lstr sin			
MRL: m-dk gy, frm, brit, sb blk, rthy-sb gt lstr, mot & gt tex, CHK: lt-m gy, gybrn, sft, sb ply, sb wxy lstr, sl str & gt tex, v calc w tr fos, scat lt yel chk flor, fast string cut, bt yel UV sin m brn WH lstr sin			











30'	MD 7422'	INC 90.00°	AZM 1.75°	TVD 6221.2'
56'	MD 7483'	INC 90.06°	AZM 1.31°	TVD 6221.17'
54'				
21.65'				

sft & brlt, sb ply & & lam tes, v calc w/

flor, occ bent lt gn

yel cut, bt yel UV

CHK: lt gy, gy brn, off wh, sft & brlt, sb ply & blkly, rthy-sb gsy lstr, mot & lam tes, v calc w/ tr fos, scat-abndt lt yel chk flor, occ bent lt gn sft w/ dism pyr fast sting bt yel cut, bt yel UV stn, lt-m brn WH lt stn.

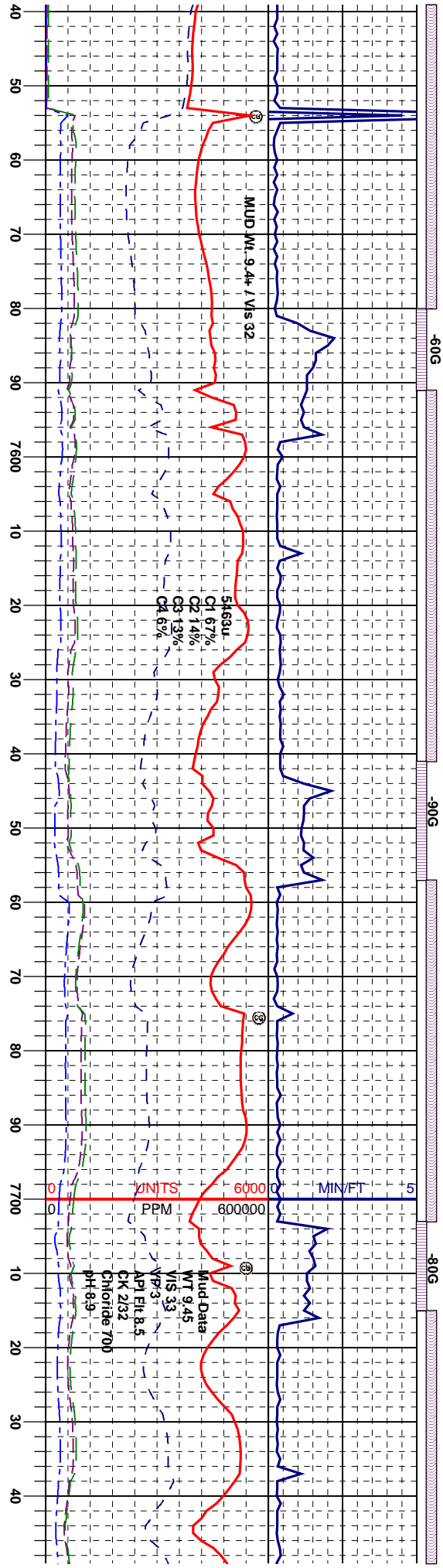
CHK: lt gy, gy brn, off wh, sft & brlt, sb ply & blkly, rthy-sb gsy lstr, mot & lam tes, v calc w/ tr fos, scat-abndt lt yel chk flor, occ bent lt gn sft w/ dism pyr fast sting bt yel cut, bt yel UV stn, lt-m brn WH lt stn.

CHK: lt gy, gy brn, off wh, sft & brlt, sb ply & blkly, rthy-sb gsy lstr, mot & lam tes, v calc w/ tr fos, scat-abndt lt yel chk flor, occ bent lt gn sft w/ dism pyr fast sting bt yel cut, bt yel UV stn, lt-m brn WH lt stn.

6275

ft

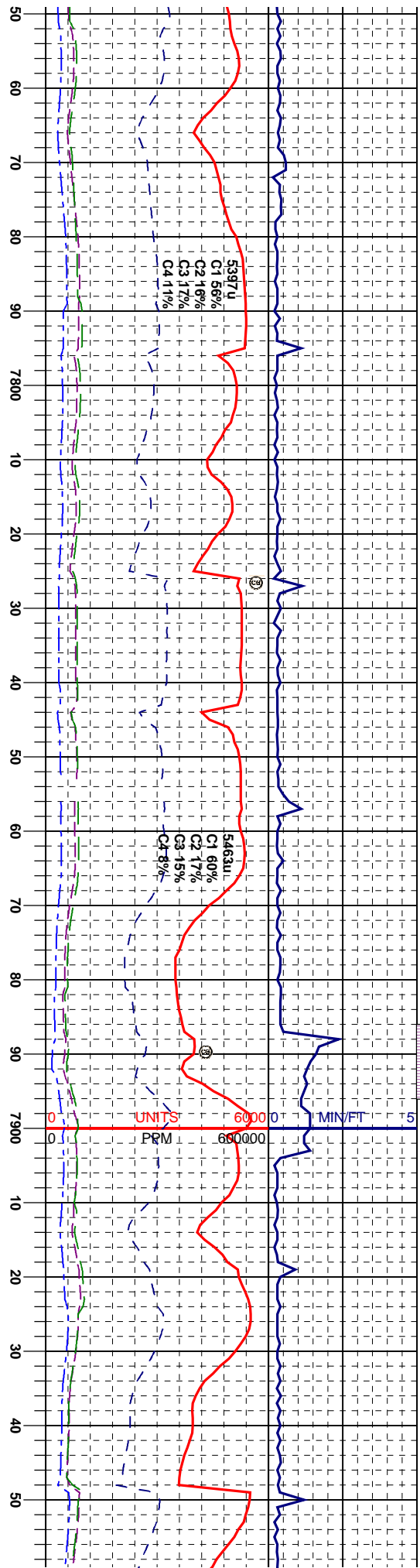
6175 50 apt 300



MD 7545° INC 90.12° AZM 2.19° TVD 6221.1°	MD 7606° INC 90.12° AZM 1.62° TVD 6220.94°	MD 7667° INC 90.06° AZM 0.38° TVD 6220.84°	MD 7729° INC 89.94° AZM 358.78° TVD 6220.84°
--	---	---	---

CHK: It gy, gy brn, off wh, sft & brit, sb ply & blkly, rthy, -sb gsy lsir, mot & lam tes, v calc w/ tr fos, scat-abndt It yel chk flor, occ bent It gn sft w/ dism pyr fast sting bt yel cut, bt yel UV strn, lt-m brn WH It strn.	CHK: It gy, gy brn, off wh, sft & brit, sb ply & blkly, rthy, -sb gsy lsir, mot & lam tes, v calc w/ tr fos, scat-abndt It yel chk flor, occ bent It gn sft w/ dism pyr fast sting bt yel cut, bt yel UV strn, lt-m brn WH It strn.	CHK: It gy, gy brn, off wh, sft & brit, sb ply & blkly, rthy, -sb gsy lsir, mot & lam tes, v calc w/ tr fos, scat-abndt It yel chk flor, occ bent It gn sft w/ dism pyr fast sting bt yel cut, bt yel UV strn, lt-m brn WH It strn.	CHK: It gy, gy brn, off wh, sft & brit, sb ply & blkly, rthy, -sb gsy lsir, mot & lam tes, v calc w/ tr fos, scat-abndt It yel chk flor, occ bent It gn sft w/ dism pyr fast sting bt yel cut, bt yel UV strn, lt-m brn WH It strn.
---	---	---	---

ply & calc w/ It gn rel UV	ply & calc w/ It gn rel UV	ply & calc w/ It gn rel UV	ply & calc w/ It gn rel UV
----------------------------	----------------------------	----------------------------	----------------------------



MD 7790'  
INC 90.31°  
AZM 359.75°  
TVD 6220.71'

MD 7851'  
INC 89.94°  
AZM 0.69°  
TVD 6220.58'

MD 7912'  
INC 89.94°  
AZM 358.83°  
TVD 6220.65'

CHK: It gy, gy brn, oft wh, sft & brit, sb ply & biky, rthy-sb gsy lsst, mot & lam tes, v calc w/ tr fos, abndt It yel chk flor, occ bent It gn sft w/ dsm pyr fast stmg bt yel cut, bt yel UV sn, lt- m brn WH It sn.

CHK: It gy, gy brn, oft wh, sft & brit, sb ply & biky, rthy-sb gsy lsst, mot & lam tes, v calc w/ tr fos, abndt It yel chk flor, occ bent It gn sft w/ dsm pyr fast stmg bt yel cut, bt yel UV sn, lt- m brn WH It sn.

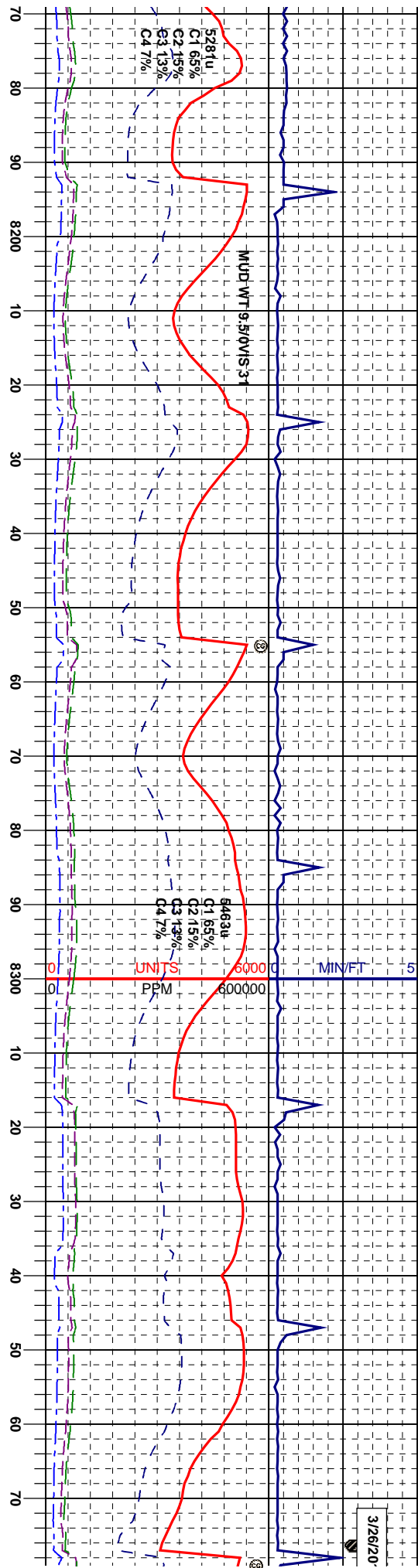
CHK: It gy, gy brn, oft wh, sft & brit, sb ply & biky, rthy-sb gsy lsst, mot & lam tes, v calc w/ tr fos, abndt It yel chk flor, occ bent It gn sft w/ dsm pyr fast stmg bt yel cut, bt yel UV sn, lt- m brn WH It sn.

CHK: It gy, gy brn, oft wh, sft & brit, sb ply & biky, rthy-sb gsy lsst, mot & lam tes, v calc w/ tr fos, abndt It yel chk flor, occ bent It gn sft w/ dsm pyr fast stmg bt yel cut, bt yel UV sn, lt- m brn WH It sn.

CHK: It gy, gy brn, oft wh, sft & brit, sb ply & biky, rthy-sb gsy lsst, mot & lam tes, v calc w/ tr fos, abndt It yel chk flor, occ bent It gn sft w/ dsm pyr fast stmg bt yel cut, bt yel UV sn, lt- m brn WH It sn.

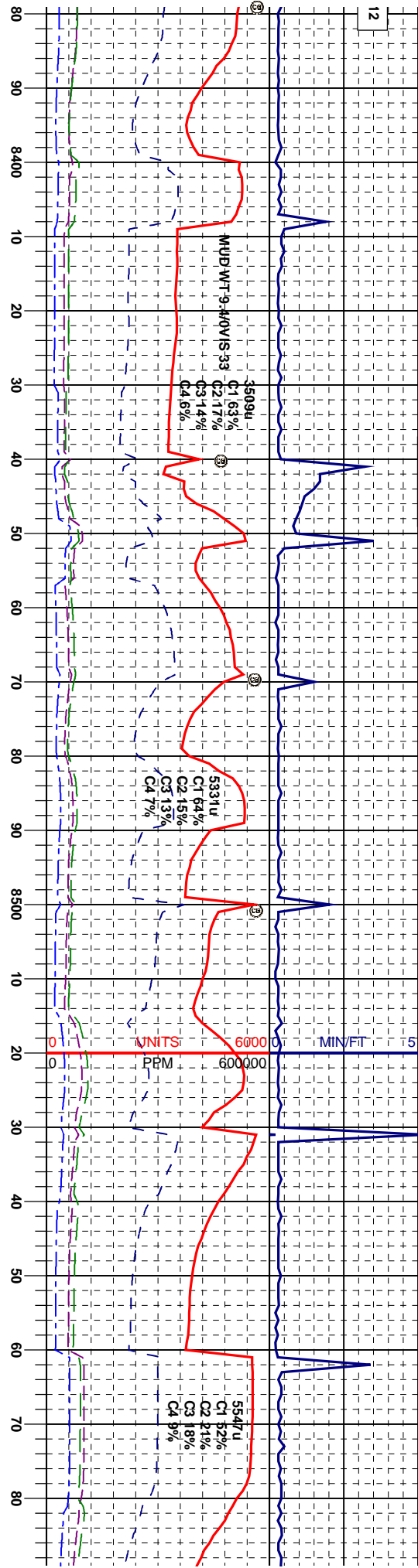






Station	MD	INC	AZM	TVD
MD 8218'	82.18'	89.51°	356.05°	6221.34'
MD 8280'	82.80'	88.57°	357.53°	6221.84'
MD 8340'	83.40'	89.75°	358.67°	6222.20'

n, w/ myg bands, sft & brit,	-	-	-
y-sd gsy istr , mot & sl lam	-	-	-
s, MRI : dgy - blk, brt, frm,	-	-	-
gt istr , v calc: abnt it yel chk	-	-	-
f stf w/dism pry fast sting bt	-	-	-
ttn, lt-m brr WH It sin.	-	-	-
CHK: It gy - off wh, w/ myg bands, sft & brit,	-	-	-
sb ply & bkly, rthy -sb gsy istr , mot & sl lam	-	-	-
tex, v calc w/ tr fos, MRI : dgy - blk, brt, frm,	-	-	-
sbbkly, wxxy & sb gt istr , v calc: abnt it yel chk	-	-	-
flor, occ bent f gn sft w/dism pry fast sting bt	-	-	-
yt cut, bt yel UV sn, lt-m brn WH It sin.	-	-	-
CHK: It gy - off wh, w/ myg bands, sft & brit,	-	-	-
sb ply & bkly, rthy -sb gsy istr , mot & sl lam	-	-	-
tex, v calc w/ tr fos, MRI : dgy - blk, brt, frm,	-	-	-
sbbkly, wxxy & sb gt istr , v calc: abnt it yel chk	-	-	-
flor, occ bent f gn sft w/dism pry fast sting bt	-	-	-
yt cut, bt yel UV sn, lt-m brn WH It sin.	-	-	-
CHK: It gy - off wh, w/ myg bands, sft & brit,	-	-	-
sb ply & bkly, rthy -sb gsy istr , mot & sl lam	-	-	-
tex, v calc w/ tr fos, abnt it yel chk flor, occ	-	-	-
bent f gn sft w/dism pry fast sting bt yel cut,	-	-	-
bt yel UV sn, lt-m brn WH It sin.	-	-	-



MD 8402'	INC 89.51°	AZM 359.42°	TVD 6222.60'
MD 8463'	INC 88.89°	AZM 356.80°	TVD 6223.46'
MD 8525'	INC 89.26°	AZM 356.87°	TVD 6224.46'
MD 8586'	INC 89.75°	AZM 357.41°	TVD 6224.5

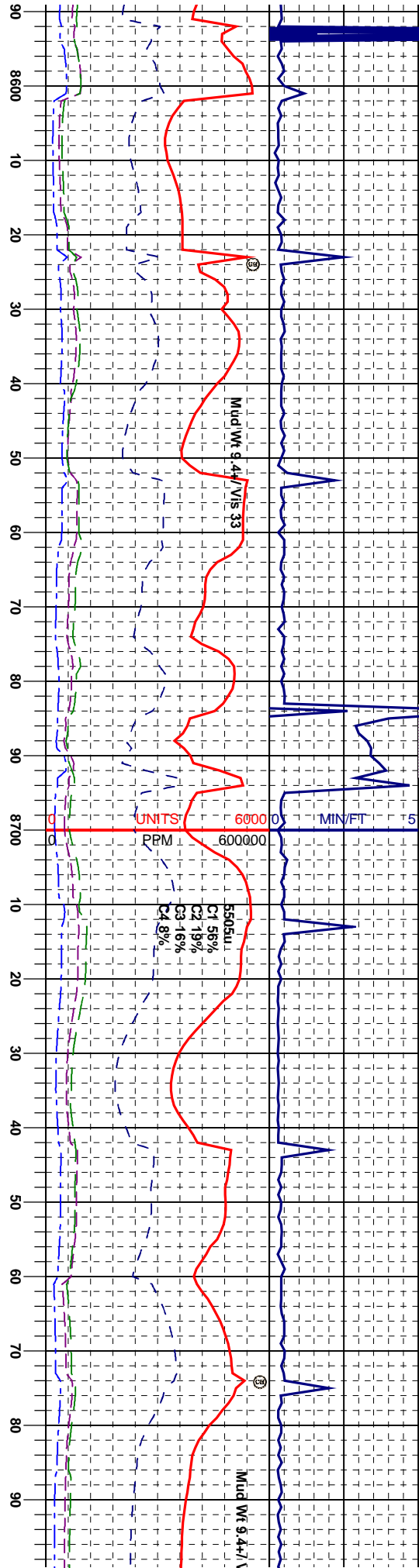
bands, sft & brt, str, mot & sl lam  
 el chk flor, occ  
 st stimg bt yel cut, t stn.

CHK: It gy - off wh, w/ mgy bands, sft & brt, sb ply & bily, rthy -sb gsy lstr, mot & sl lam tex, v calic w/ tr fos, abnt it yel chk flor, occ bent it gn sft w/ dism pyr fast stimg bt yel cut, bt yel UV stn, lt-m brn WH it stn.

CHK: It gy - off wh, w/ mgy bands, sft & brt, sb ply & bily, rthy -sb gsy lstr, mot & sl lam tex, v calic w/ tr fos, abnt it yel chk flor, occ bent it gn sft w/ dism pyr fast stimg bt yel cut, bt yel UV stn, lt-m brn WH it stn.

CHK: It gy - off wh, w/ mgy bands, sft & brt, sb ply & bily, rthy -sb gsy lstr, mot & sl lam tex, v calic w/ tr fos, abnt it yel chk flor, occ bent it gn sft w/ dism pyr fast stimg bt yel cut, bt yel UV stn, lt-m brn WH it stn.

CHK: It gy gy brn off wh, sft & brt, ply & rthy-sb gsy lstr, mot& lam tex, v calic, oc abnt it yel chk flor, fast stimg bt yel cut, UV stn, lt-m brn WH it stn.



MD 8646'	INC 89.26°	AZM 386.63°	TVD 6225.50'
MD 8707'	INC 90.19°	AZM 357.03°	TVD 6225.82'
MD 8768'	INC 89.51°	AZM 356.35°	TVD 6225.99'

CHK: It gy gy brn off wh, sft & brt, ply & blk, rthy-sb gsy lstr, mot& lam tex, v calc, occ fos, abndt it yel chk flr, fast sting bt yel cut, bt yel UV sin, it-m brn WH it stn.

CHK: It gy gy brn off wh, sft & brt, ply & blk, rthy-sb gsy lstr, mot& lam tex, v calc, occ fos, abndt it yel chk flr, fast sting bt yel cut, bt yel UV sin, it-m brn WH it stn.

CHK: It gy gy brn off wh, sft & brt, ply & blk, rthy-sb gsy lstr, mot& lam tex, v calc, occ fos, ~5% Bent : it blugn, sft ply dism pyr, abndt it yel chk flr, fast sting bt yel cut, bt yel UV sin, it-m brn WH it stn.



[illegible]

CHK: It gy gy brn off wh, sft & brit, pily & bky, rthy-sb gsy lstr, mo& lam tex, v calc, occ fos, ~ 5% Bent : It blugn, sft pily dism pyr, abndt It yel chk flor, fast smng bt yel cut, bt yel UV str, lltm brn WH It sm.

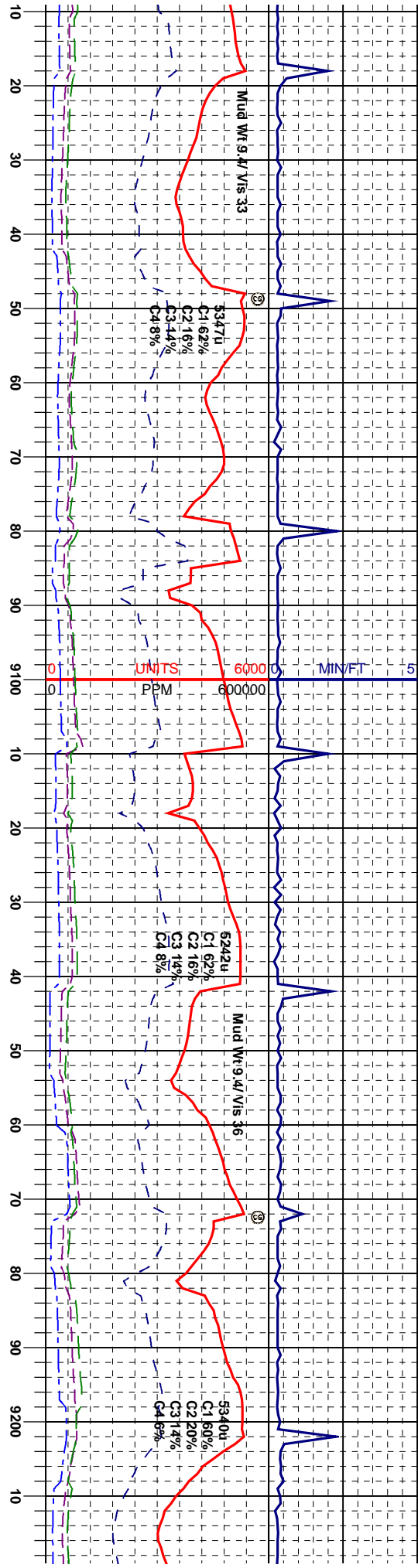
CHK: It'm gy gy brn dirtier chnk, stt& brt, sb  
biky -biky, rthy -sb gsy lstr, mot & chky tex,  
occ fos, scat-abndt it yel chk flwr, ~10% Bent:  
it blu gn, sft, dism pyr, occ MRL, Fast string bt  
yel cut, bt yel UV stn, it brn W/H it stn.

CHK: It'm gy gy brn dirtier chak, sft& brit, sb  
bly-biky, rthy-sb gsy lstr, mot & chky tex,  
occ fos, scat-abndt It yel chk flor, ~10% Bent:  
It blu gn, sft, dism pyr, occ MRL, Fast stmg b  
yel cut, bt yel UV sin, It brn WH It stn.

CHK, gY-ou wH & n gY, sH & bH, sD uNkY &  
pHly, rthY lSt, mOt and lAm tEx, v cAlc w/ t'  
fOs, BEnt: It blU gN, sft, dIsM pYr, abNdY yel  
chK fIor, fAs stmg to blmg bY yel cUt, bY yel UV  
stn, It bW WH It sIn.

CHK  
- plty,  
- Bent  
- flor,  
- It br





Mud Wt 9.4/ V/S 33			
③			
5347u			
C1 6.2%			
C2 1.6%			
C3 4.4%			
C4 8%			
MD 9073'			
INC 89.94°			
AZM 358.59°			
TVD 6226.28'			
6175 50' apt 300			
Mud Wt 9.4/ V/S 36			
③			
5242u			
C1 6.2%			
C2 1.6%			
C3 4.4%			
C4 8%			
MD 9133'			
INC 89.88°			
AZM 359.95°			
TVD 6226.38'			
MD 9198'			
INC 89.94°			
AZM 0.88°			
TVD 6226.46'			

CHK: It gy-off wh & m gy, sft & brit, sb blkly & ply, rthy lstr, mot and lam tex, v calc w/ tr fos, Bent: It blu gn, sft, dism pyr, abndt ly yel chk floor, fast stmg to blng bt yel cut, bt yel UV stn, it brn WH It stn.

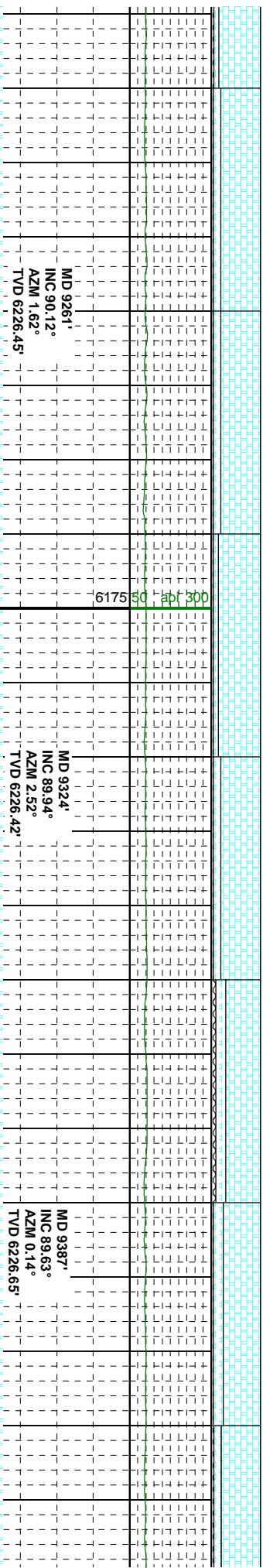
CHK: It gy-off wh & m gy, sft & brit, sb blkly & ply, rthy lstr, mot and lam tex, v calc w/ tr fos, Bent: It blu gn, sft, dism pyr, abndt ly yel chk floor, fast stmg to blng bt yel cut, bt yel UV stn, it brn WH It stn.

CHK: It gy-off wh & m gy, sft & brit, sb blkly & ply, rthy lstr, mot and lam tex, v calc w/ tr fos, Bent: It blu gn, sft, dism pyr, abndt ly yel chk floor, fast stmg to blng bt yel cut, bt yel UV stn, it brn WH It stn.

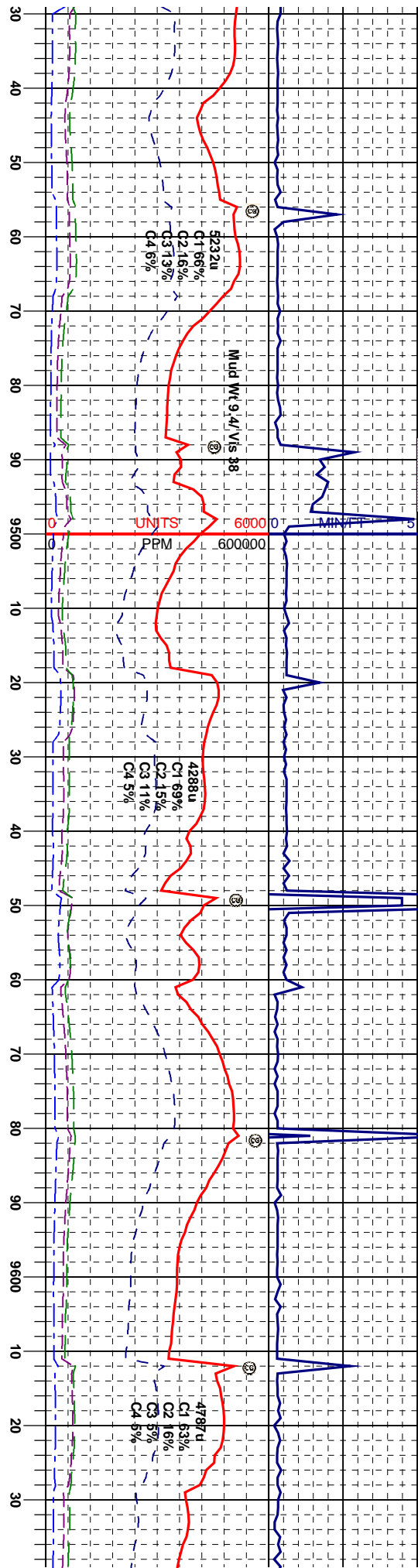
It gy-off wh & m gy, sft & brit, sb blkly & rthy lstr, mot and lam tex, v calc w/ tr fos, Bent: It blu gn, sft, dism pyr, abndt ly yel chk floor, fast stmg to blng bt yel cut, bt yel UV stn, it brn WH It stn.

It gy-off wh & m gy, sft & brit, sb blkly & rthy lstr, mot and lam tex, v calc w/ tr fos, Bent: It blu gn, sft, dism pyr, abndt ly yel chk floor, fast stmg to blng bt yel cut, bt yel UV stn, it brn WH It stn.

It gy-off wh & m gy, sft & brit, sb blkly & rthy lstr, mot and lam tex, v calc w/ tr fos, Bent: It blu gn, sft, dism pyr, abndt ly yel chk floor, fast stmg to blng bt yel cut, bt yel UV stn, it brn WH It stn.



CHK: It gy-off wh & m gy, sft  
ply, rthy lstr, mot and lam te  
Bent: It blu gn, sft, dsm pyr,  
flor, fast stmg to blmg bt yel  
it brn WH It stn.



MD 9451'	INC 90.06°	AZM 1.36°	TVD 6226.83'
MD 9513'	INC 89.75°	AZM 0.14°	TVD 6226.93'
MD 9575'	INC 89.51°	AZM 359.89°	TVD 6227.33'
MD 9638'	INC 89.4°	AZM 1.0°	TVD 622'

ft

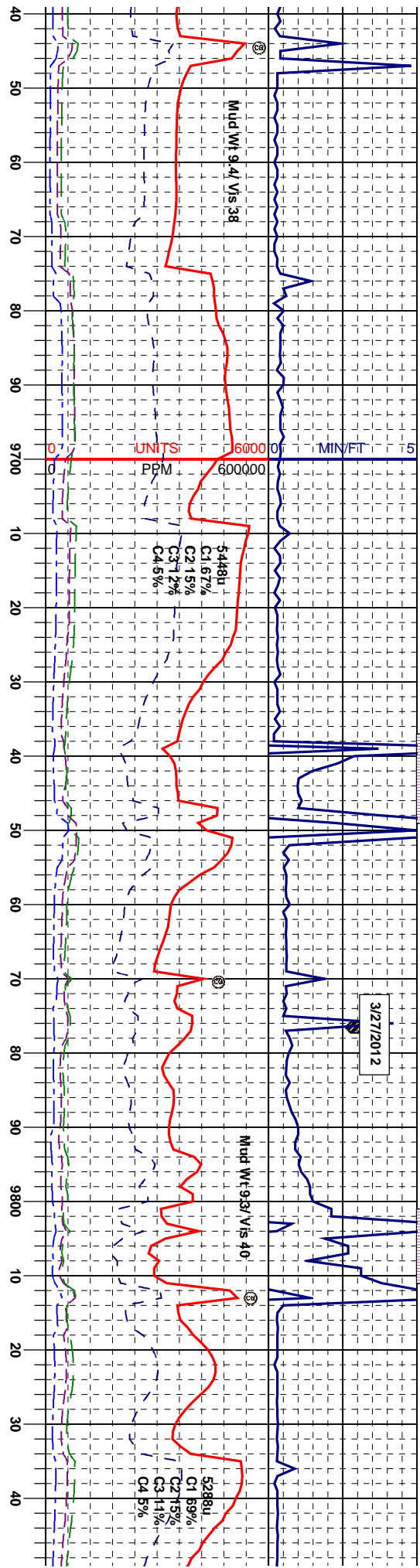
6175 50 apr 300

62/s

CHK: It gy-off wh & m gy, sft & brit, sb biky & ply, rthy lstr, mot and lam tex, v calic w/ tr fos, Bent: It blu gn, sft, dism pyr, abndt ly yel chk flor, fast string to bling bt yel cut, bt yel UV sin, it brn WH It sin.

CHK: It gy-off wh & m gy, sft & brit, sb biky & ply, rthy lstr, mot and lam tex, v calic w/ tr fos, Bent: It blu gn, sft, dism pyr, abndt ly yel chk flor, fast string to bling bt yel cut, bt yel UV sin, it brn WH It sin.

CHK: It gy-off wh w/ m gy streaks, sft, sb biky & ply, rthy lstr, mot and lam te calic w/ tr fos, Bent: It blu gn, sft, dism pyr, abndt ly yel chk flor, fast string to b yel cut, bt yel UV sin, It brn WH It sin.



MD 9702° INC 89.38° AZM 2.21° TVD 6228.56'	MD 9766° INC 89.32° AZM 0.91° TVD 6229.28'	MD 9829° INC 89.63° AZM 0.63° TVD 6229.85'
---	---	---

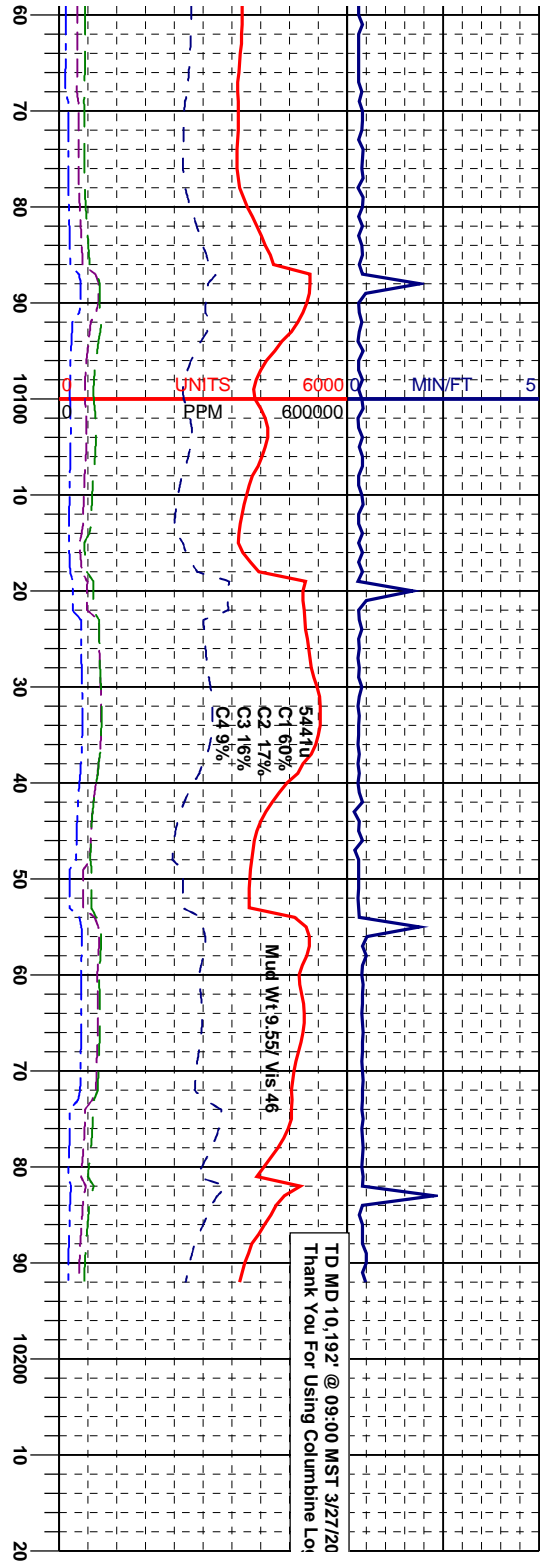
CHK: It gy-off wh w/ m gy streaks, sft & brt, sb blkly & pty, rthy lstr, mot and lam tex, v calc w/ tr fos, ~10% Bent: It blu gn, sft, dism pyr, abndt ly yel chk flor, fast string to bling bt yel cut, bt yel UV sin, It brn WH It sin.	CHK: It gy-off wh w/ m gy streaks, sft & brt, sb blkly & pty, rthy lstr, mot and lam tex, v calc w/ tr fos, ~10% Bent: It blu gn, sft, dism pyr, abndt ly yel chk flor, fast string to bling bt yel cut, bt yel UV sin, It brn WH It sin.	CHK: It gy-off wh w/ m gy streaks, sft & brt, sb blkly & pty, rthy lstr, mot and lam tex, v calc w/ tr fos, ~10% Bent: It blu gn, sft, dism pyr, abndt ly yel chk flor, fast string to bling bt yel cut, bt yel UV sin, It brn WH It sin.
---	---	---

6275	ft	6175	50	api 800
------	----	------	----	---------









60	70	80	90	10100	10	20	30	40	50	60	70	80	90	10200	10	20
ft																
6175																
MD 10114'																
INC 89.75°																
AZM 1.36°																
TVD 6232.3'																
MD 10157'																
INC 89.88°																
AZM 2.24°																
TVD 6232.44'																
SLP of Bit																
MD 10192'																
INC 89.88°																
AZM 2.24°																
TVD 6232.44'																

l-m gy, gybrn, sft-m frm, brt, sb blk, gsy lstr, mot & lam tex, v calc, occ fos, % BENT: It blu gn w/ dism pyr, scat- t yel flor, fast string to blooming bt yel yel UV sin, lt-m brn WH lt sin.

CHK: It-m gy, gybrn, sft-m frm, brt, sb blk, rthy-sb gsy lstr, mot & lam tex, v calc, occ fos, ~ 5-10% BENT: It blu gn w/ dism pyr, scat- about lt yel flor, fast string to blooming bt yel cut, bt yel UV sin, lt-m brn WH lt sin.

6275