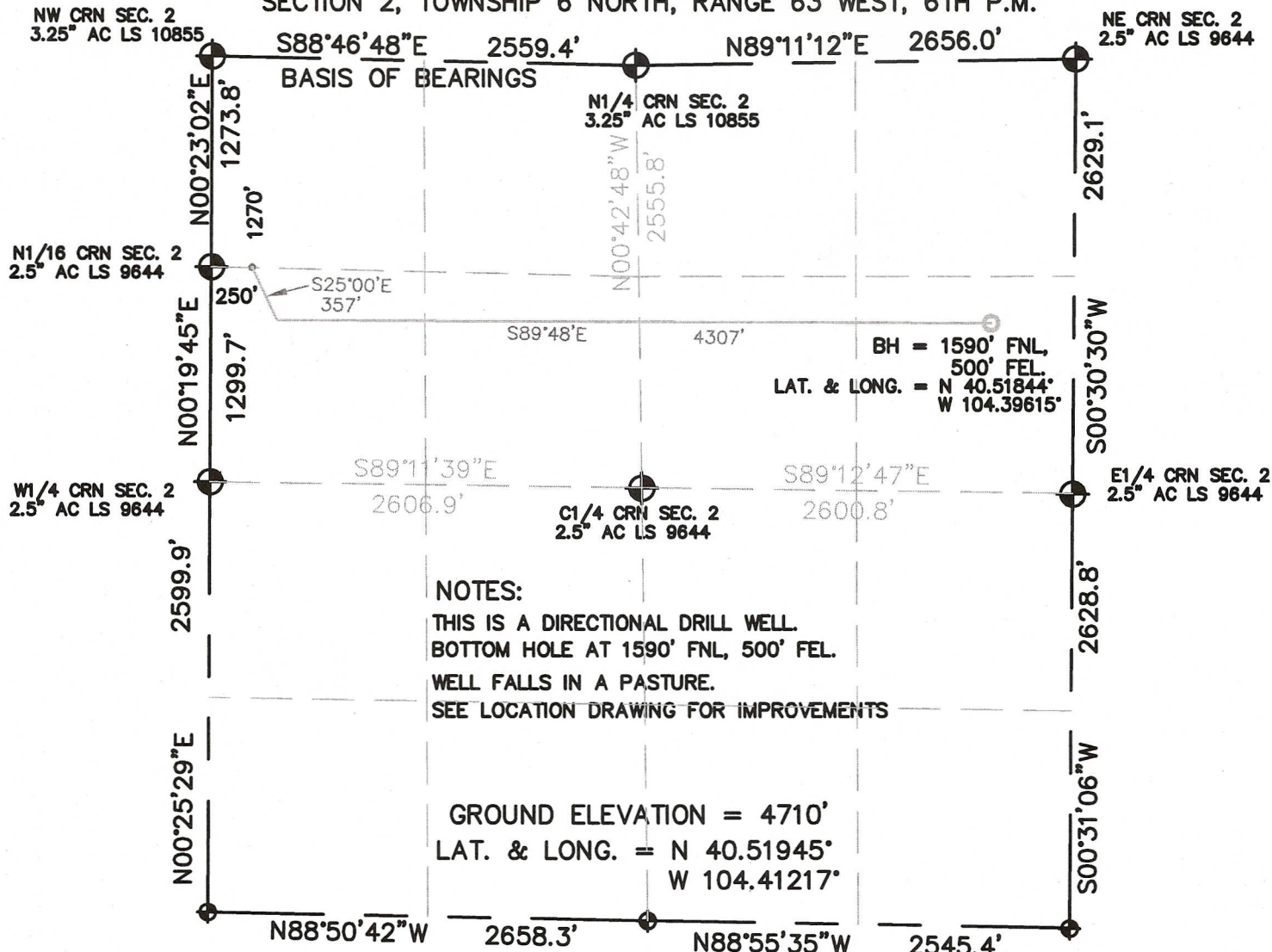


WELL LOCATION CERTIFICATE

SECTION 2, TOWNSHIP 6 NORTH, RANGE 63 WEST, 6TH P.M.



NOTES:

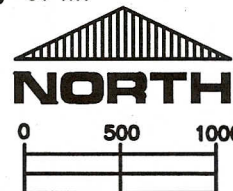
THIS IS A DIRECTIONAL DRILL WELL.
BOTTOM HOLE AT 1590' FNL, 500' FEL.
WELL FALLS IN A PASTURE.
SEE LOCATION DRAWING FOR IMPROVEMENTS

I HEREBY STATE TO PERTOLEUM DEV. CORP. THAT THE SURFACE LOCATION FOR THE WELL BROWN 2F-432 IS LOCATED 1270' FNL & 250' FWL, SEC. 2, T6N, R63W, 6PM.



LEGEND

- = FOUND MONUMENT
- = PROPOSED WELL
- = BOTTOM HOLE



SCALE 1" = 1000'

ELEVATION SOURCE = USGS 7.5' QUAD.MAP CONTOURS
NGVD 1929 DATUM.

THE SURFACE LOCATION LAT. & LONG. ARE DIFFERENTIALLY CORRECTED (NAD '83) USING (DGPS) WITH (PDOP) OF 1.3.

SHOWN DISTANCES ARE FIELD MEASURED - EXTERIOR SECTION LINES ARE DRAWN TO SCALE (BEST APPROX. OR FOUND MONUMENT ●).

THOMAS G. CARLSON, PLS 24657
HORSESHOE SURVEYING, LLC

THIS IS NOT A MONUMENTED BOUNDARY SURVEY, IT IS ONLY A
DRAWING INTENDED TO DEPICT THE WELL LOCATION TO SECTION LINES.

DISTANCES TO WELL SHOWN PERPENDICULAR
TO SECTION LINES.

| | | | | | |
|--------------------------|------------|--|--|--|---------------------|
| PREPARED BY: | | HORSESHOE SURVEYING, LLC PO BOX 150458 LAKEWOOD, CO 80215 (720)872-0196 | | WELL NAME: BROWN 2F-432 | |
| DRAWING DATE: 5-19-12 | | | | LOCATION: WELD COUNTY, CO NW1/4, SEC. 2, T6N, R63W, 6TH P.M. | |
| FIELD DATE: 4-14-12 | BY: TGC | CHKD: | | JOB NO. | SHEET NO. 1 OF 1 |