

---

**OXY GRAND JUNCTION EBUSINESS**

---

**CC 697-08-10A  
GRAND VALLEY  
Garfield County , Colorado**

**Cement Surface Casing**  
20-Apr-2012

**Post Job Summary**

*The Road to Excellence Starts with Safety*

<b>Sold To #:</b> 344034	<b>Ship To #:</b> 344034	<b>Quote #:</b>	<b>Sales Order #:</b> 9431716
<b>Customer:</b> OXY GRAND JUNCTION EBUSINESS		<b>Customer Rep:</b> Vallegas, Alex	
<b>Well Name:</b> CC		<b>Well #:</b> 697-08-10A	<b>API/UWI #:</b> 05-045-20970
<b>Field:</b> GRAND VALLEY	<b>City (SAP):</b> ADDISON	<b>County/Parish:</b> Garfield	<b>State:</b> Colorado
<b>Lat:</b> N 39.544 deg. OR N 39 deg. 32 min. 37.14 secs.		<b>Long:</b> W 108.246 deg. OR W -109 deg. 45 min. 12.852 secs.	
<b>Contractor:</b> OXY		<b>Rig/Platform Name/Num:</b> H&P 353	
<b>Job Purpose:</b> Cement Surface Casing			
<b>Well Type:</b> Development Well		<b>Job Type:</b> Cement Surface Casing	
<b>Sales Person:</b> HIMES, JEFFREY		<b>Srvc Supervisor:</b> MAGERS, MICHAEL	<b>MBU ID Emp #:</b> 339439

**Job Personnel**

HES Emp Name	Exp Hrs	Emp #	HES Emp Name	Exp Hrs	Emp #	HES Emp Name	Exp Hrs	Emp #
DEUSSEN, EDWARD Eric	7	485182	EICKHOFF, ROBERT Edward	7	495311	ENGBERG, KEVIN W	2	454218
MAGERS, MICHAEL Gerard	7	339439	WALPOLE, DARREN Livingston	7	485294			

**Equipment**

HES Unit #	Distance-1 way	HES Unit #	Distance-1 way	HES Unit #	Distance-1 way	HES Unit #	Distance-1 way
10744549	120 mile	10744648C	120 mile	10938678	120 mile	10988964	120 mile
10995027	120 mile	11259886	120 mile	11808845	120 mile	4901	120 mile
6543	120 mile						

**Job Hours**

Date	On Location Hours	Operating Hours	Date	On Location Hours	Operating Hours	Date	On Location Hours	Operating Hours
04/20/2012	7	4						
<b>TOTAL</b>	<i>Total is the sum of each column separately</i>							

**Job**

**Job Times**

Formation Name	Job			Date	Time	Time Zone	
Formation Depth (MD)	Top	Bottom	Called Out	20 - Apr - 2012	23:00	MST	
Form Type	BHST			On Location	20 - Apr - 2012	04:00	MST
Job depth MD	2740. ft	Job Depth TVD	2740. ft	Job Started	20 - Apr - 2012	09:49	MST
Water Depth	Wk Ht Above Floor			Job Completed	20 - Apr - 2012	14:24	MST
Perforation Depth (MD)	From	To	Departed Loc	20 - Apr - 2012	15:30	MST	

**Well Data**

Description	New / Used	Max pressure psig	Size in	ID in	Weight lbm/ft	Thread	Grade	Top MD ft	Bottom MD ft	Top TVD ft	Bottom TVD ft

**Tools and Accessories**

Type	Size	Qty	Make	Depth	Type	Size	Qty	Make	Depth	Type	Size	Qty	Make
Guide Shoe					Packer					Top Plug	9.625	1	HES
Float Shoe					Bridge Plug					Bottom Plug			
Float Collar					Retainer					SSR plug set			
Insert Float										Plug Container	9.625	1	HES
Stage Tool										Centralizers			

**Miscellaneous Materials**

Gelling Agt	Conc	Surfactant	Conc	Acid Type	Qty	Conc %
Treatment Fld	Conc	Inhibitor	Conc	Sand Type	Size	Qty

**Fluid Data**

Stage/Plug #: 1											
Fluid #	Stage Type	Fluid Name			Qty	Qty uom	Mixing Density lbm/gal	Yield ft3/sk	Mix Fluid Gal/sk	Rate bbl/min	Total Mix Fluid Gal/sk

**Stage/Plug #: 1**

Stage/Plug #: 1									
Fluid #	Stage Type	Fluid Name	Qty	Qty uom	Mixing Density lbm/gal	Yield ft <sup>3</sup> /sk	Mix Fluid Gal/sk	Rate bbl/min	Total Mix Fluid Gal/sk
1	Fresh Water Spacer		10.00	bbl	8.33	.0	.0	.0	
2	Gel Water Spacer		20.00	bbl	8.34	.0	.0	.0	
0.25 gal/bbl		LGC-36 UC, BULK (101582749)							
3	Fresh Water Spacer		10.00	bbl	8.33	.0	.0	.0	
4	HalCem Lead Cement	HALCEM (TM) SYSTEM (452986)	1161.0	sacks	12.3	2.15	11.83	.0	11.83
11.83 Gal		FRESH WATER							
5	VariCem Tail Cement	VARICEM (TM) CEMENT (452009)	150.0	sacks	12.8	2.07	10.67	.0	10.67
10.67 Gal		FRESH WATER							
6	Fresh Water Displacement		206.00	bbl	8.34	.0	.0	.0	
Calculated Values		Pressures		Volumes					
Displacement	206	Shut In: Instant		Lost Returns	726	Cement Slurry	530	Pad	
Top Of Cement	SURFACE	5 Min		Cement Returns	5	Actual Displacement	206	Treatment	
Frac Gradient		15 Min		Spacers	40	Load and Breakdown		Total Job	760
Rates									
Circulating	RIG	Mixing	6	Displacement	8	Avg. Job	6		
Cement Left In Pipe	Amount	49 ft	Reason	Shoe Joint					
Frac Ring # 1 @	ID	Frac ring # 2 @	ID	Frac Ring # 3 @	ID	Frac Ring # 4 @	ID		
The Information Stated Herein Is Correct				Customer Representative Signature					

*The Road to Excellence Starts with Safety*

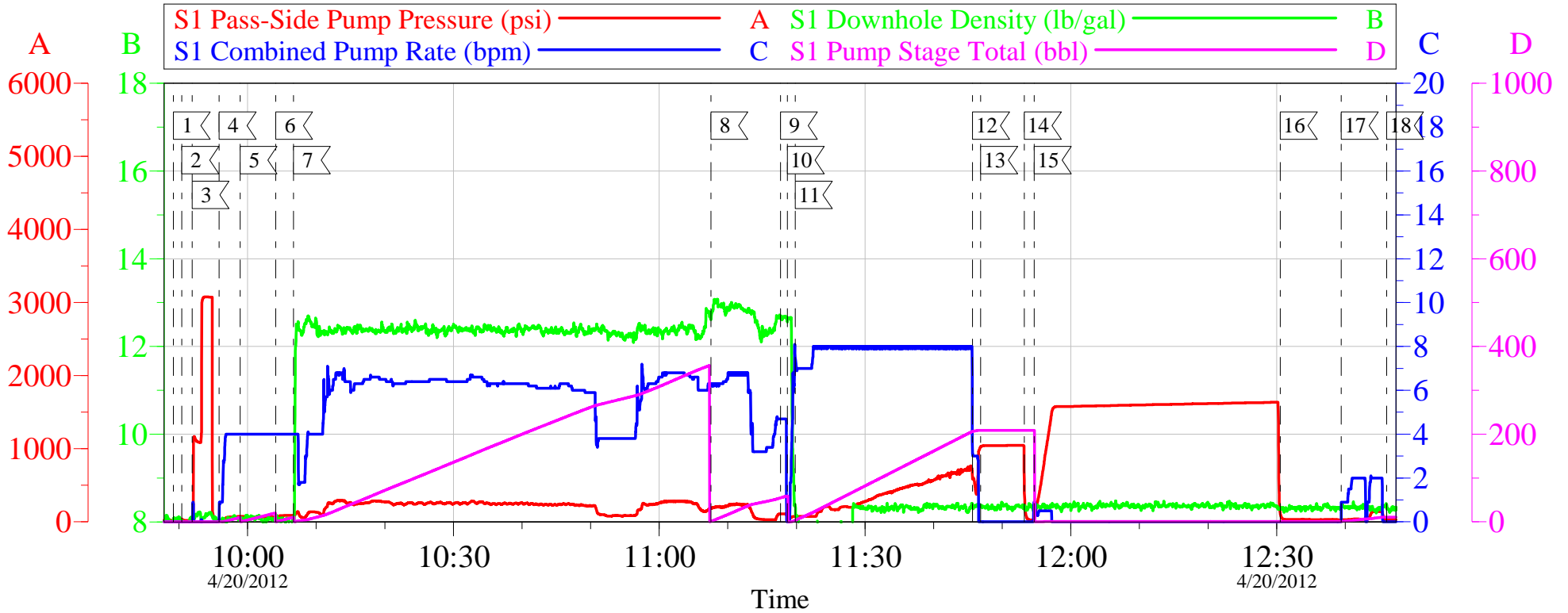
<b>Sold To #:</b> 344034	<b>Ship To #:</b> 344034	<b>Quote #:</b>	<b>Sales Order #:</b> 9431716
<b>Customer:</b> OXY GRAND JUNCTION EBUSINESS		<b>Customer Rep:</b> Vallegas, Alex	
<b>Well Name:</b> CC	<b>Well #:</b> 697-08-10A	<b>API/UWI #:</b> 05-045-20970	
<b>Field:</b> GRAND VALLEY	<b>City (SAP):</b> ADDISON	<b>County/Parish:</b> Garfield	<b>State:</b> Colorado
<b>Legal Description:</b>			
<b>Lat:</b> N 39.544 deg. OR N 39 deg. 32 min. 37.14 secs.		<b>Long:</b> W 108.246 deg. OR W -109 deg. 45 min. 12.852 secs.	
<b>Contractor:</b> OXY		<b>Rig/Platform Name/Num:</b> H&P 353	
<b>Job Purpose:</b> Cement Surface Casing			<b>Ticket Amount:</b>
<b>Well Type:</b> Development Well		<b>Job Type:</b> Cement Surface Casing	
<b>Sales Person:</b> HIMES, JEFFREY		<b>Srvc Supervisor:</b> MAGERS, MICHAEL	<b>MBU ID Emp #:</b> 339439

Activity Description	Date/Time	Cht #	Rate bbl/min	Volume bbl		Pressure psig		Comments
				Stage	Total	Tubing	Casing	
Call Out	04/19/2012 23:00							ALL HES PERSONNEL
Pre-Convoy Safety Meeting	04/20/2012 01:20							ALL HES PERSONNEL
Crew Leave Yard	04/20/2012 01:30							ALL HES PERSONNEL
Arrive At Loc	04/20/2012 04:00							HES ARRIVED ON LOCATION AT 04:00 4 HOURS EARLY TIME STARTS AT 08:00
Assessment Of Location Safety Meeting	04/20/2012 04:10							LOCATION IN GOOD CONDITION
Pre-Rig Up Safety Meeting	04/20/2012 07:45							JSA ON RIGGING UP
Rig-Up Equipment	04/20/2012 08:00							1 PICKUP 1 ELITE 2 SILO 1 BULK TRUCK
Safety Huddle	04/20/2012 09:15							RIG CREW AND HES CREW ALL PRESENT
Start Job	04/20/2012 09:49							TD-2740 TP-2719 SJ-49 MW-9.5 CSG- 9 5/8 36# J-55 OH- 14 3/4"
Other	04/20/2012 09:50		2	2			20.0	FILL LINES
Pressure Test	04/20/2012 09:51		0.5	0.5			3040.0	PSI TEST OK
Pump Spacer 1	04/20/2012 09:55		4	10			72.0	FRESH WATER
Pump Spacer 2	04/20/2012 09:58		4	20			69.0	LGC GEL SPACER/ 2.5 GAL PER 10 BBLs
Pump Spacer 1	04/20/2012 10:04		4	10			66.0	FRESH WATER
Pump Lead Cement	04/20/2012 10:06		6	444			254.0	HALCEM 1161 SKS 12.3 PPG 2.15 FT3/SK 11.83 GAL/SK 7 BOXES TUFF FIBER

Activity Description	Date/Time	Cht #	Rate bbl/min	Volume bbl		Pressure psig		Comments
				Stage	Total	Tubing	Casing	
Pump Tail Cement	04/20/2012 11:07		6	55			240.0	VARICEM 150 SKS 12.8 PPG 2.07 FT3/SK 10.67 GAL/SK
Shutdown	04/20/2012 11:17							
Drop Top Plug	04/20/2012 11:18							PLUG AWAY NO PROBLEMS
Pump Displacement	04/20/2012 11:19		6	196			794.0	PUMP FRESH WATER DISPLACEMENT
Slow Rate	04/20/2012 11:45		2	10			400.0	
Bump Plug	04/20/2012 11:46		2	206			410.0	BUMPED PLUG
Check Floats	04/20/2012 11:53			206			1043. 0	FLOATS HELD/GOT 3/4 BBL BACK
Pressure Test	04/20/2012 11:54		1	2			1575. 0	PRESSURE TEST 9 5/8" CASING TO 1500 PSI FOR 30 MINUTES AT 1575 PSI
Release Casing Pressure	04/20/2012 12:30						1636. 0	RELEASE PRESSURE AT 1636 PSI
Other	04/20/2012 12:39		2	10			141.0	PUMPED 10BBLs SUGAR WATER
End Job	04/20/2012 12:46							726 BBLs OF LOST RETURNS - NO CEMENT TO SURFACE
Comment	04/20/2012 13:00							WAITING TO TOPOUT
Start Job	04/20/2012 13:58							
Other	04/20/2012 13:59		1	1			34.0	FILL LINES
Pump Cement	04/20/2012 14:02		2	31			86.0	PUMP TOP OUT 12.5 PPG 1.97 FT3/SK 10.69 GAL/SK USED 70 LBS OF SUGAR
Clean Lines	04/20/2012 14:21		1.5	2				CLEAN OUT LINE
End Job	04/20/2012 14:24							WAIT 30 MINUTES TO SEE IF CEMENT FALLS BACK /GOT 5 BBLs OF CEMENT TO SURFACE / RELEASED FROM LOCATION
Comment	04/20/2012 15:00							THANKS FOR USING HES AND THE CREW OF MIKE MAGERS

# OXY CC 697-08-10A

9.625 OFFLINE SURFACE

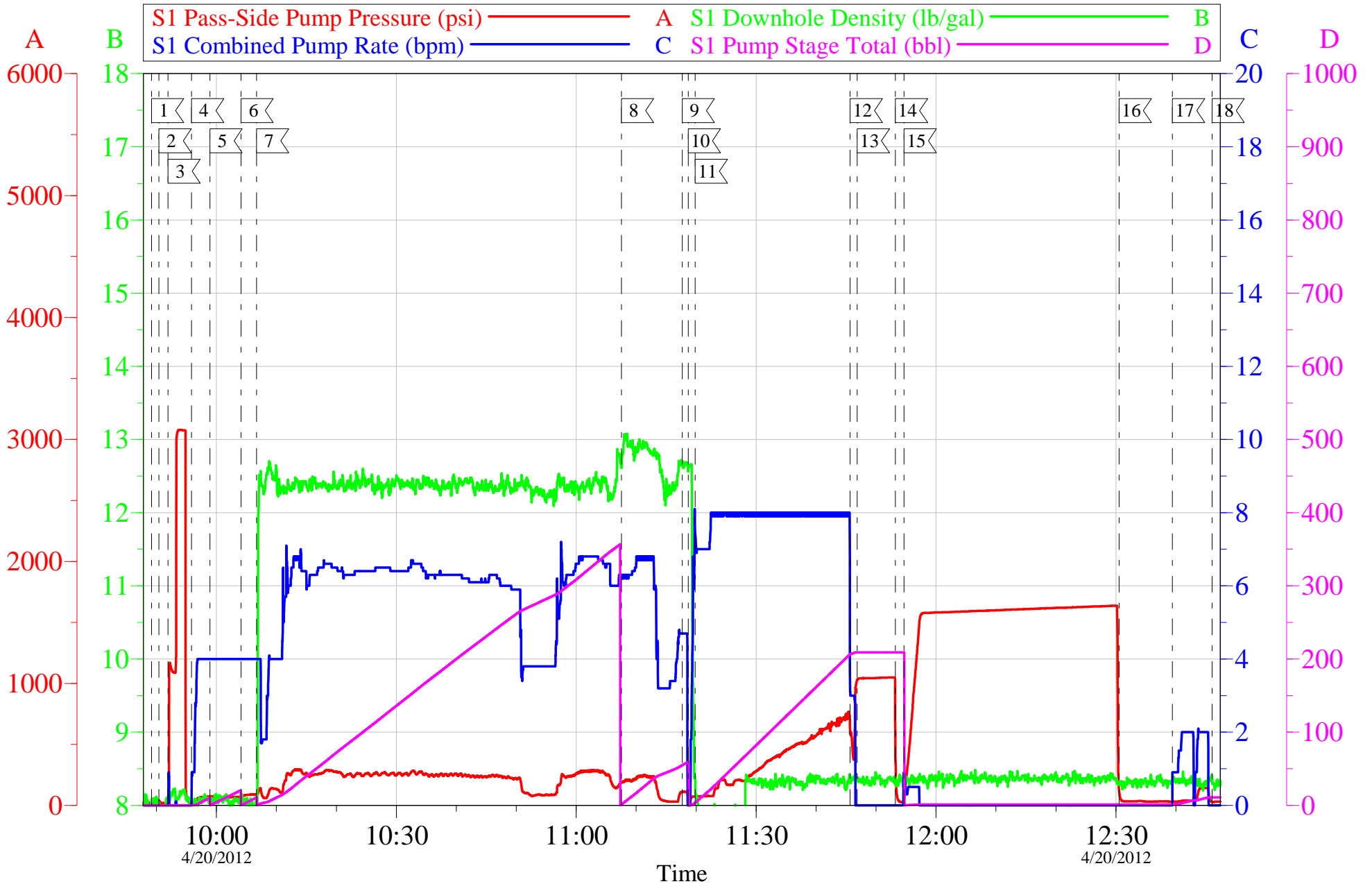


Local Event Log					
1	START JOB	09:49:10	2	FILL LINES	09:50:25
3	PRESSURE TEST	09:51:55	4	PUMP H2O SPACER	09:55:52
5	PUMP GEL SPACER	09:58:56	6	PUMP H2O SPACER	10:04:06
7	PUMP LEAD CEMENT	10:06:42	8	PUMP TAIL CEMENT	11:07:32
9	SHUT DOWN	11:17:40	10	DROP TOP PLUG	11:18:40
11	PUMP FRSH WTR DISPLACEMENT	11:19:50	12	SLOW RATE	11:45:41
13	BUMP PLUG	11:46:51	14	CHECK FLOATS	11:53:13
15	PRESSURE TEST CASING	11:54:40	16	RELEASE PRESSURE	12:30:31
17	PUMP 10 BBLS SUGAR WATER	12:39:24	18	END JOB	12:46:01

Customer:	OXY H&P 353	Job Date:	20-Apr-2012	Sales Order #:	9416014
Well Description:	CC 697-08-10A	Job Type:	SURFACE	ADC Used:	YES
Company Rep:	ALEX VALLEGAS	Cement Supervisor:	MIKE MAGERS	Elite # 6	ROB EICKHOFF

# OXY CC 697-08-10A

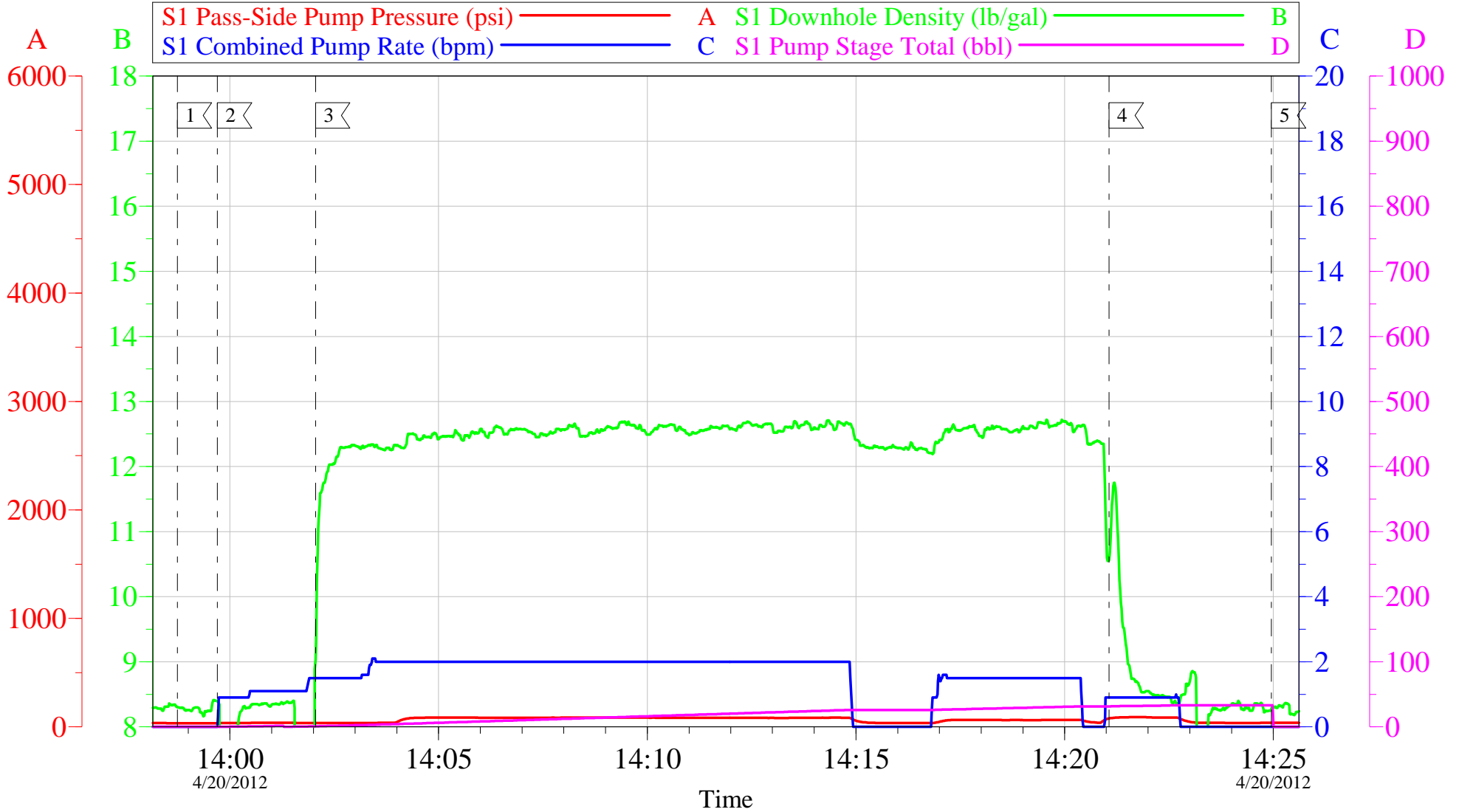
9.625 OFFLINE SURFACE



Customer: OXY H&P 353	Job Date: 20-Apr-2012	Sales Order #: 9416014
Well Description: CC 697-08-10A	Job Type: SURFACE	ADC Used: YES
Company Rep: ALEX VALLEGAS	Cement Supervisor: MIKE MAGERS	Elite # 6 ROB EICKHOFF

# OXY CC 697-08-10A TOPOUT 1

## TOPOUT

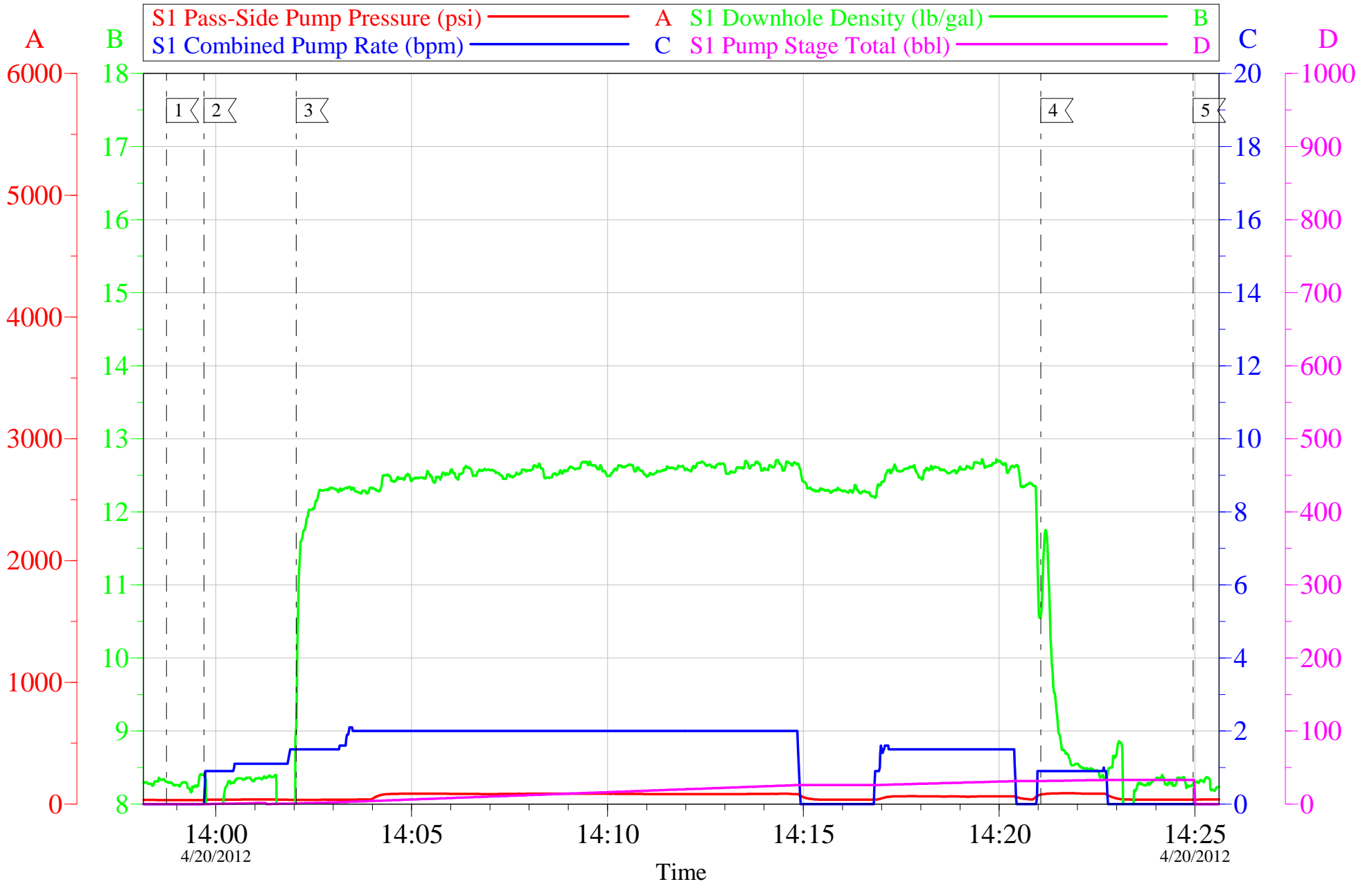


Local Event Log			
1 START JOB	13:58:44	2 FILL LINE	13:59:42
		3 PUMP TOPOUT CEMENT	14:02:03
4 CLEAN LINE	14:21:04	5 END JOB	14:24:57

Customer: OXY / HP 353	Job Date: 20-Apr-2012	Sales Order #: 9431716
Well Description: CC 697-08-10A	Job Type: TOPOUT 1	ADC Used: YES
Company Rep: ALEX VILLEGAS	Cement Supervisor: MIKE MAGERS	Elite #6: ROB EICKHOFF

# OXY CC 697-08-10A TOPOUT 1

## TOPOUT



Customer: OXY / HP 353	Job Date: 20-Apr-2012	Sales Order #: 9431716
Well Description: CC 697-08-10A	Job Type: TOPOUT 1	ADC Used: YES
Company Rep: ALEX VILLEGAS	Cement Supervisor: MIKE MAGERS	Elite #6: ROB EICKHOFF

OptiCem v6.4.10  
20-Apr-12 14:37

<b>Sales Order #:</b> 9431716	<b>Line Item:</b> 10	<b>Survey Conducted Date:</b> 4/20/2012
<b>Customer:</b> OXY GRAND JUNCTION EBUSINESS		<b>Job Type (BOM):</b> CMT SURFACE CASING BOM
<b>Customer Representative:</b> ALEX VILLEGAS		<b>API / UWI: (leave blank if unknown)</b> 05-045-20970
<b>Well Name:</b> CC		<b>Well Number:</b> 697-08-10A
<b>Well Type:</b> Development Well	<b>Well Country:</b> United States of America	
<b>H2S Present:</b>	<b>Well State:</b> Colorado	<b>Well County:</b> Garfield

Dear Customer,

We hope that you were satisfied with the service quality of this job performed by Halliburton. It is the aim of our management and service personnel to deliver equipment and service of a standard unmatched in the service sector of the energy industry.

Please take the time to let us know if our performance met with your satisfaction. Please be as critical as possible to ensure we constantly improve our service. Your comments are of great value to us and are intended for the exclusive use of Halliburton.

### CUSTOMER SATISFACTION SURVEY

CATEGORY	CUSTOMER SATISFACTION RESPONSE	
Survey Conducted Date	The date the survey was conducted	4/20/2012
Survey Interviewer	The survey interviewer is the person who initiated the survey.	MICHAEL MAGERS (HX13672)
Customer Participation	Did the customer participate in this survey? (Y/N)	Yes
Customer Representative	Enter the Customer representative name	ALEX VILLEGAS
HSE	Was our HSE performance satisfactory? Circle Y or N	Yes
Equipment	Were you satisfied with our Equipment? Circle Y or N	Yes
Personnel	Were you satisfied with our people? Circle Y or N	Yes
Customer Comment	Customer's Comment	GREAT JOB THANKS

<b>CUSTOMER SIGNATURE</b>
---------------------------

<b>Sales Order #:</b> 9431716	<b>Line Item:</b> 10	<b>Survey Conducted Date:</b> 4/20/2012
<b>Customer:</b> OXY GRAND JUNCTION EBUSINESS		<b>Job Type (BOM):</b> CMT SURFACE CASING BOM
<b>Customer Representative:</b> ALEX VILLEGAS		<b>API / UWI: (leave blank if unknown)</b> 05-045-20970
<b>Well Name:</b> CC		<b>Well Number:</b> 697-08-10A
<b>Well Type:</b> Development Well	<b>Well Country:</b> United States of America	
<b>H2S Present:</b>	<b>Well State:</b> Colorado	<b>Well County:</b> Garfield

### KEY PERFORMANCE INDICATORS

General	
<b>Survey Conducted Date</b>	4/20/2012
The date the survey was conducted	

Cementing KPI Survey	
<b>Type of Job</b>	0
Select the type of job. (Cementing or Non-Cementing)	
<b>Select the Maximum Deviation range for this Job</b>	Vertical
What is the highest deviation for the job you just completed? This may not be the maximum well deviation.	
<b>Total Operating Time (hours)</b>	6
Total Operating Hours Including Rig-up, Pumping, Rig-down. Enter in decimal format.	
<b>HSE Incident, Accident, Injury</b>	No
HSE Incident, Accident, Injury. This should be recordable incidents only.	
<b>Was the job purpose achieved?</b>	Yes
Was the job delivered correctly as per customer agreed design?	
<b>Operating Hours (Pumping Hours)</b>	4
Total number of hours pumping fluid on this job. Enter in decimal format.	
<b>Customer Non-Productive Rig Time (hrs)</b>	0
Lost time due to Halliburton in the start, execution, or completion of an ordered service or product, or delays in a follow-on service. Enter in decimal format. 0 if none.	
<b>Type of Rig Classification Job Was Performed</b>	Drilling Rig (Portable)
Type Of Rig (classification) Job Was Performed On	
<b>Number Of JSAs Performed</b>	4
Number Of Jsas Performed	
<b>Number of Unplanned Shutdowns</b>	0
Unplanned shutdown is when injection stops for any period of time.	
<b>Was this a Primary Cement Job (Yes / No)</b>	Yes

<b>Sales Order #:</b> 9431716	<b>Line Item:</b> 10	<b>Survey Conducted Date:</b> 4/20/2012
<b>Customer:</b> OXY GRAND JUNCTION EBUSINESS		<b>Job Type (BOM):</b> CMT SURFACE CASING BOM
<b>Customer Representative:</b> ALEX VILLEGAS		<b>API / UWI: (leave blank if unknown)</b> 05-045-20970
<b>Well Name:</b> CC		<b>Well Number:</b> 697-08-10A
<b>Well Type:</b> Development Well	<b>Well Country:</b> United States of America	
<b>H2S Present:</b>	<b>Well State:</b> Colorado	<b>Well County:</b> Garfield

Primary Cement Job= Casing job, Liner job, or Tie-back job.	
<b>Did We Run Wiper Plugs?</b> Did We Run Top And Bottom Casing Wiper Plugs?	Top
<b>Mixing Density of Job Stayed in Designed Density Range (0-100%)</b> Density Range defined as +/- .20 ppg. Calculation: Total BBLs cement mixed at designed density divided by total BBLs of cement multiplied by 100	94
<b>Was Automated Density Control Used?</b> Was Automated Density Control (ADC) Used ?	Yes
<b>Pump Rate (percent) of Job Stayed At Designed Pump Rate</b> Pump Rate range defined as +/- 1bbl/min. Calculation: Total BBLs of fluid pumped at the designed rate divided by Total BBLs of fluid pumped, multiplied by 100	94
<b>Nbr of Remedial Sqz Jobs Rqd - Competition</b> Number Of Remedial Squeeze Jobs Required After Primary Job Performed By Competition	0
<b>Nbr of Remedial Plug Jobs Rqd - HES</b> Number Of Remedial Plug Jobs Needed After Primary Plug Pumped By HES	0
<b>Nbr of Remedial Sqz Jobs Rqd - HES</b> Number Of Remedial Squeeze Jobs Required After Primary Job Performed By HES	0