
OXY GRAND JUNCTION EBUSINESS

**Cascade Creek 697-08-02B
GRAND VALLEY
Garfield County , Colorado**

Cement Surface Casing **22-Apr-2012**

Post Job Summary

The Road to Excellence Starts with Safety

The Road to Excellence Starts With Safety			
Sold To #: 344034	Ship To #: 344034	Quote #:	Sales Order #: 9448780
Customer: OXY GRAND JUNCTION EBUSINESS		Customer Rep: Vallegas, Alex	
Well Name: Cascade Creek	Well #: 697-08-02B	API/UWI #: 05-045-20961	
Field: GRAND VALLEY	City (SAP): ADDISON	County/Parish: Garfield	State: Colorado
Lat: N 39.544 deg. OR N 39 deg. 32 min. 37.212 secs.		Long: W 108.246 deg. OR W -109 deg. 45 min. 12.816 secs.	
Contractor: H&P 353		Rig/Platform Name/Num: H&P 353	
Job Purpose: Cement Surface Casing			
Well Type: Development Well		Job Type: Cement Surface Casing	
Sales Person: HIMES, JEFFREY	Srv Supervisor: MAGERS, MICHAEL	MBU ID Emp #: 339439	

Job Personnel

HES Emp Name	Exp Hrs	Emp #	HES Emp Name	Exp Hrs	Emp #	HES Emp Name	Exp Hrs	Emp #
BLUST, CHARLES Thomas	14	386662	EICKHOFF, ROBERT Edward	14	495311	MAGERS, MICHAEL Gerard	14	339439
WALPOLE, DARREN Livingston	14	485294						

Equipment

HES Unit #	Distance-1 way	HES Unit #	Distance-1 way	HES Unit #	Distance-1 way	HES Unit #	Distance-1 way
10565341	120 mile	10722398	120 mile	10744648C	120 mile	10973571	120 mile
11139330	120 mile	11259886	120 mile	11808845	120 mile	4901	120 mile
6543	120 mile						

Job Hours

Date	On Location Hours	Operating Hours	Date	On Location Hours	Operating Hours	Date	On Location Hours	Operating Hours
04/21/2012	1	0	04/22/2012	13	7			
TOTAL		Total is the sum of each column separately						

Job

Formation Name				Job Times			
Formation Depth (MD)	Top	Bottom		Called Out	Date	Time	Time Zone
Form Type	BHST			On Location	21 - Apr - 2012	19:00	MST
Job depth MD	2744. ft	Job Depth TVD	2744. ft	Job Started	22 - Apr - 2012	02:57	MST
Water Depth		Wk Ht Above Floor	2. ft	Job Completed	22 - Apr - 2012	12:59	MST
Perforation Depth (MD)	From	To		Departed Loc	22 - Apr - 2012	14:00	MST

Well Data

Description	New / Used	Max pressure psig	Size in	ID in	Weight lbm/ft	Thread	Grade	Top MD ft	Bottom MD ft	Top TVD ft	Bottom TVD ft
-------------	------------	-------------------	---------	-------	---------------	--------	-------	-----------	--------------	------------	---------------

Sales/Rental/3rd Party (HES)

Description	Qty	Qty uom	Depth	Supplier
R/A DENSOMETER W/CHART RECORDER,/JOB,ZI	1	JOB		
PORT. DATA ACQUIS. W/OPTICEM RT W/HES	1	EA		
ADC (AUTO DENSITY CTRL) SYS, /JOB,ZI	1	JOB		
PLUG,CMTG,TOP,9 5/8,HWE,8.16 MIN/9.06 MA	1	EA		

Tools and Accessories

Type	Size	Qty	Make	Depth	Type	Size	Qty	Make	Depth	Type	Size	Qty	Make
Guide Shoe					Packer					Top Plug	9.625	1	HES
Float Shoe					Bridge Plug					Bottom Plug			
Float Collar					Retainer					SSR plug set			
Insert Float										Plug Container	9.625	1	HES
Stage Tool										Centralizers			

Miscellaneous Materials

Gelling Agt	Conc	Surfactant	Conc	Acid Type	Qty	Conc	%
Treatment Fld	Conc	Inhibitor	Conc	Sand Type	Size	Qty	

Fluid Data

Stage/Plug #: 1									
Fluid #	Stage Type	Fluid Name	Qty	Qty uom	Mixing Density lbm/gal	Yield ft ³ /sk	Mix Fluid Gal/sk	Rate bbl/min	Total Mix Fluid Gal/sk
1	Fresh Water Spacer		10.00	bbl	8.33	.0	.0	.0	
2	Gel Water Spacer		20.00	bbl	8.34	.0	.0	.0	
0.25 gal/bbl		LGC-36 UC, BULK (101582749)							
3	Fresh Water Spacer		10.00	bbl	8.33	.0	.0	.0	
4	Lead Cement	HALCEM (TM) SYSTEM (452986)	1162.0	sacks	12.3	2.15	11.83		11.83
11.83 Gal		FRESH WATER							
5	Tail Cement	VERSACEM (TM) SYSTEM (452010)	160.0	sacks	12.8	2.07	10.67		10.67
10.67 Gal		FRESH WATER							
6	Fresh Water Displacement		207.00	bbl	8.34	.0	.0	.0	
7	Top Out Cement	HALCEM (TM) SYSTEM (452986)	425.0	sacks	12.5	1.97	10.96		10.96
10.96 Gal		FRESH WATER							
Calculated Values		Pressures		Volumes					
Displacement	206	Shut In: Instant		Lost Returns	761	Cement Slurry	653	Pad	
Top Of Cement	SURFACE	5 Min		Cement Returns	10	Actual Displacement	206	Treatment	
Frac Gradient		15 Min		Spacers	55	Load and Breakdown		Total Job	925
Rates									
Circulating	RIG	Mixing	6	Displacement	8/3	Avg. Job	6		
Cement Left In Pipe	Amount	49 ft	Reason	Shoe Joint					
Frac Ring # 1 @	ID	Frac ring # 2 @	ID	Frac Ring # 3 @	ID	Frac Ring # 4 @	ID		
The Information Stated Herein Is Correct				Customer Representative Signature					

The Road to Excellence Starts with Safety

Sold To #: 344034	Ship To #: 344034	Quote #:	Sales Order #: 9448780
Customer: OXY GRAND JUNCTION EBUSINESS		Customer Rep: Vallegas, Alex	
Well Name: Cascade Creek		Well #: 697-08-02B	API/UWI #: 05-045-20961
Field: GRAND VALLEY	City (SAP): ADDISON	County/Parish: Garfield	State: Colorado
Legal Description:			
Lat: N 39.544 deg. OR N 39 deg. 32 min. 37.212 secs.		Long: W 108.246 deg. OR W -109 deg. 45 min. 12.816 secs.	
Contractor: H&P 353		Rig/Platform Name/Num: H&P 353	
Job Purpose: Cement Surface Casing			Ticket Amount:
Well Type: Development Well		Job Type: Cement Surface Casing	
Sales Person: HIMES, JEFFREY		Srv Supervisor: MAGERS, MICHAEL	MBU ID Emp #: 339439

Activity Description	Date/Time	Cht #	Rate bbl/min	Volume bbl		Pressure psig		Comments
				Stage	Total	Tubing	Casing	
Call Out	04/21/2012 13:30							ALL HES PERSONNEL
Pre-Convoy Safety Meeting	04/21/2012 15:50							ALL HES PERSONNEL
Crew Leave Yard	04/21/2012 16:00							ALL HES PERSONNEL
Arrive At Loc	04/21/2012 19:00							HES ARRIVED ON LOCATION AT 19:00 5 HOURS EARLY / TIME STARTS AT 23:00 / RIG HAD JUST PULLED OUT OF HOLE AND GETTING READY TO RUN CASING/ RIG CIRCULATED FOR 45 MINUTES/DID NOT HAVE RETURNS ESTABLISHED BEFORE STABING PLUG CONTAINER
Assessment Of Location Safety Meeting	04/21/2012 19:10							LOCATION IN GOOD CONDITION/SPOT EQUIPMENT
Pre-Rig Up Safety Meeting	04/21/2012 22:50							JSA ON RIGGING UP
Rig-Up Equipment	04/21/2012 23:00							1 PICKUP 1 ELITE 2 SILO 2 BULK TRUCK
Safety Huddle	04/22/2012 02:15							RIG CREW AND HES CREW ALL PRESENT
Start Job	04/22/2012 02:57							TD-2744 TP-2720 SJ-49 MW-9.5 CSG- 9 5/8 36# J-55 OH- 14 3/4" CONDUCTOR SET AT 90'
Other	04/22/2012 02:58		2	2			48.0	FILL LINES

Activity Description	Date/Time	Cht #	Rate bbl/min	Volume bbl		Pressure psig		Comments
				Stage	Total	Tubing	Casing	
Pressure Test	04/22/2012 02:59		0.5	0.5			3170.0	PSI TEST OK
Pump Spacer 1	04/22/2012 03:05		4	10			85.0	FRESH WATER
Pump Spacer 2	04/22/2012 03:07		4	20			85.0	LGC GEL SPACER/ 2.5 GAL PER 10 BBLS
Pump Spacer 1	04/22/2012 03:12		4	10			99.0	FRESH WATER
Pump Lead Cement	04/22/2012 03:14		6	445			226.0	HALCEM 1162 SKS 12.3 PPG 2.15 FT3/SK 11.83 GAL/SK 7 BOXES TUFF FIBER
Pump Tail Cement	04/22/2012 04:20		6	59			170.0	VARICEM 160 SKS 12.8 PPG 2.07 FT3/SK 10.67 GAL/SK
Shutdown	04/22/2012 04:31							
Drop Top Plug	04/22/2012 04:32							PLUG AWAY NO PROBLEMS
Pump Displacement	04/22/2012 04:33		7	197			573.0	PUMP FRESH WATER DISPLACEMENT
Slow Rate	04/22/2012 04:57		3	10			400.0	
Bump Plug	04/22/2012 05:00		3	206.5			450.0	BUMPED PLUG
Check Floats	04/22/2012 05:05						915.0	FLOATS HELD/GOT 3/4 BBL BACK
Pressure Test	04/22/2012 05:07		1	2			1548.0	PRESSURE TEST 9 5/8" CASING TO 1500 PSI FOR 30 MINUTES
Release Casing Pressure	04/22/2012 05:41			2			1615.0	RELEASE PRESSURE AT 1615 PSI
Other	04/22/2012 05:50		2	10				PUMP 10 BBLS SUGAR WATER/USED
End Job	04/22/2012 05:56							HAD NO RETURNS DURING THE JOB/ 761 BBLS PUMPED
Comment	04/22/2012 06:00							WAIT TO TOP OUT
Start Job	04/22/2012 06:55							RIG UP 1" PIPE
Other	04/22/2012 06:56		1	1			7.0	FILL LINE
Pump Cement	04/22/2012 06:58		2	35			68.0	PUMP TOPOUT 12.5 PPG 1.97 FT3/SK 10.96 GAL/SK
Shutdown	04/22/2012 07:16							PULL 1" PIPE

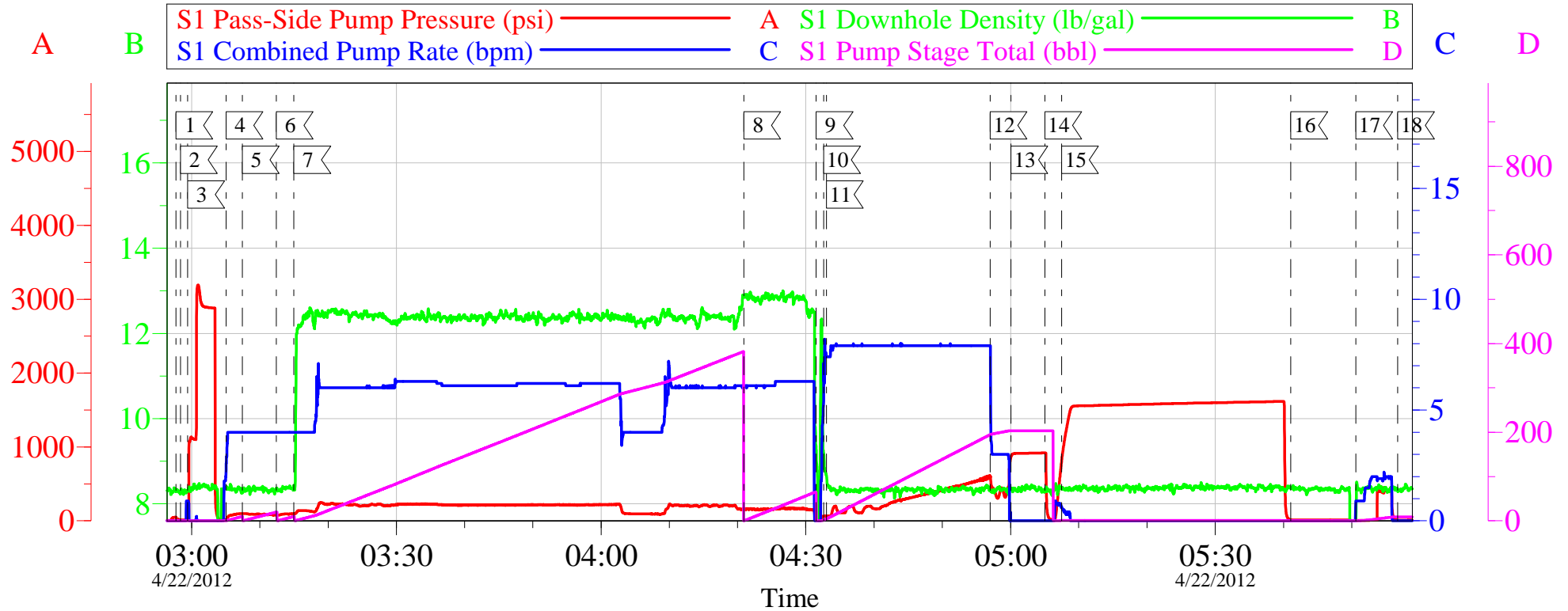
Activity Description	Date/Time	Cht #	Rate bbl/min	Volume bbl		Pressure psig		Comments
				Stage	Total	Tubing	Casing	
Clean Lines	04/22/2012 07:17		2	2				CLEAN LINE
End Job	04/22/2012 07:18							NO CEMENT TO SURFACE
Comment	04/22/2012 07:30							WAIT TO TOP OUT/ 1 HOUR PER COMPANY REP
Start Job	04/22/2012 08:20							
Other	04/22/2012 08:21		1	1			16.0	FILL LINE
Pump Cement	04/22/2012 08:23		2	35			68.0	PUMP TOPOUT 12.5 PPG 1.97 FT3/SK 10.96 GAL/SK
Shutdown	04/22/2012 08:41							PULL 1" PIPE
Clean Lines	04/22/2012 08:42		2	2			54.0	CLEAN LINE
End Job	04/22/2012 08:44							NO CEMENT TO SURFACE
Comment	04/22/2012 08:55							WAIT TO TOP OUT/ 1 HOUR PER COMPANY REP
Start Job	04/22/2012 09:42							
Other	04/22/2012 09:43		1	1			15.0	FILL LINE
Pump Cement	04/22/2012 09:45		2	35			74.0	PUMP TOPOUT 12.5 PPG 1.97 FT3/SK 10.96 GAL/SK
Shutdown	04/22/2012 10:10							PULL 1" PIPE
Clean Lines	04/22/2012 10:12		2	2			50.0	CLEAN LINE
End Job	04/22/2012 10:13							NO CEMENT TO SURFACE
Comment	04/22/2012 10:25							WAIT TO TOPOUT/ 1 HOUR PER COMPANY REP
Start Job	04/22/2012 11:11							
Other	04/22/2012 11:12		1	1			25.0	FILL LINE
Pump Cement	04/22/2012 11:14		2	36			76.0	PUMP TOPOUT 12.5 PPG 1.97 FT3/SK 10.96 GAL/SK
Shutdown	04/22/2012 11:34							PULL OUT 1" PIPE

Cementing Job Log

Activity Description	Date/Time	Cht #	Rate bbl/min	Volume bbl		Pressure psig		Comments
				Stage	Total	Tubing	Casing	
Clean Lines	04/22/2012 11:35		2	2			53.0	CLEAN LINE
End Job	04/22/2012 11:36							GOT CEMENT TO SURFACE 2 BBLS/ PER COMPANY REP WAIT 1 HOURS TO TAG CEMENT LEVEL
Start Job	04/22/2012 12:48							TAGGED HOLE 15-20' DROP
Other	04/22/2012 12:49		1	1			30.0	FILL LINE
Pump Cement	04/22/2012 12:51		2	8			85.0	PUMP TOPOUT 12.5 PPG 1.97 FT3/SK 10.96 GAL/SK
Shutdown	04/22/2012 12:57							PULL OUT 1" PIPE
Clean Lines	04/22/2012 12:58		2	2			51.0	CLEAN LINE
End Job	04/22/2012 12:59							GOT 6 BBLS OF CEMENT TO SURFACE
Comment	04/22/2012 13:15							THANKS FOR USING HES AND THE CREW OF MIKE MAGERS

OXY CC 697-08-02B

9.625 OFFLINE SURFACE



Local Event Log					
1	START JOB	02:57:42	2	FILL LINES	02:58:21
3	PRESSURE TEST	02:59:24	4	PUMP H2O SPACER	03:05:02
5	PUMP GEL SPACER	03:07:25	6	PUMP H2O SPACER	03:12:24
7	PUMP LEAD CEMENT	03:14:59	8	PUMP TAIL CEMENT	04:20:55
9	SHUT DOWN	04:31:31	10	DROP TOP PLUG	04:32:37
11	PUMP FRSH WTR DISPLACEMENT	04:33:01	12	SLOW RATE	04:57:01
13	BUMP PLUG	05:00:03	14	CHECK FLOATS	05:05:02
15	PRESSURE TEST CASING	05:07:30	16	RELEASE PRESSURE	05:41:04
17	PUMP SUGAR WATER	05:50:36	18	END JOB	05:56:44

Customer: OXY H&P 353
Well Description: CC 697-08-02 B
Company Rep: ALEX VILLAGAS

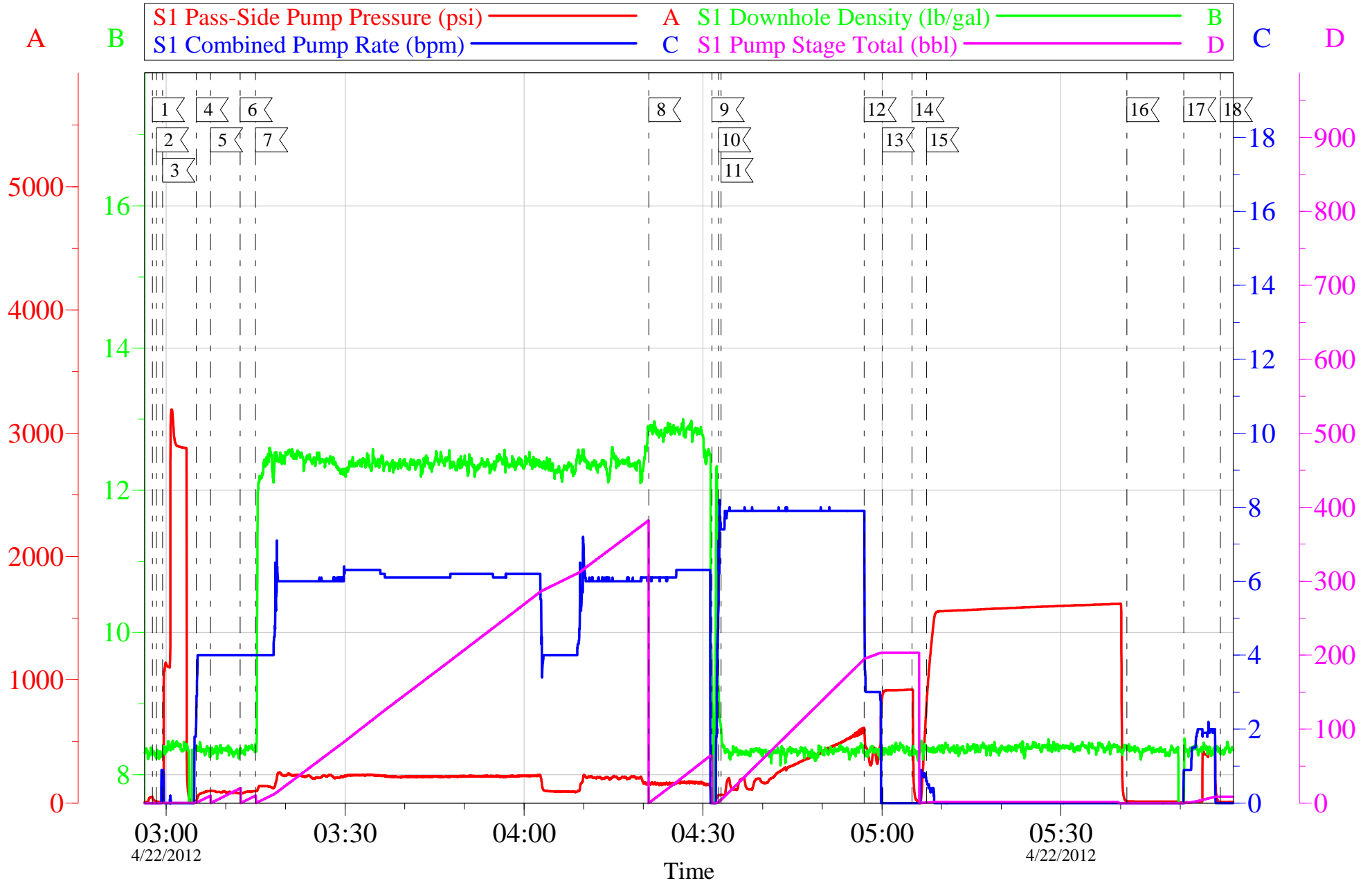
Job Date: 21-Apr-2012
Job Type: SURFACE
Cement Supervisor: MIKE MAGERS

Sales Order #: 9448780
ADC Used: YES
Elite # 6 ROB EICKHOFF

OptiCem v6.4.10
22-Apr-12 06:10

OXY CC 697-08-02B

9.625 OFFLINE SURFACE



Customer: OXY H&P 353
Well Description: CC 697-08-02 B
Company Rep: ALEX VILLAGAS

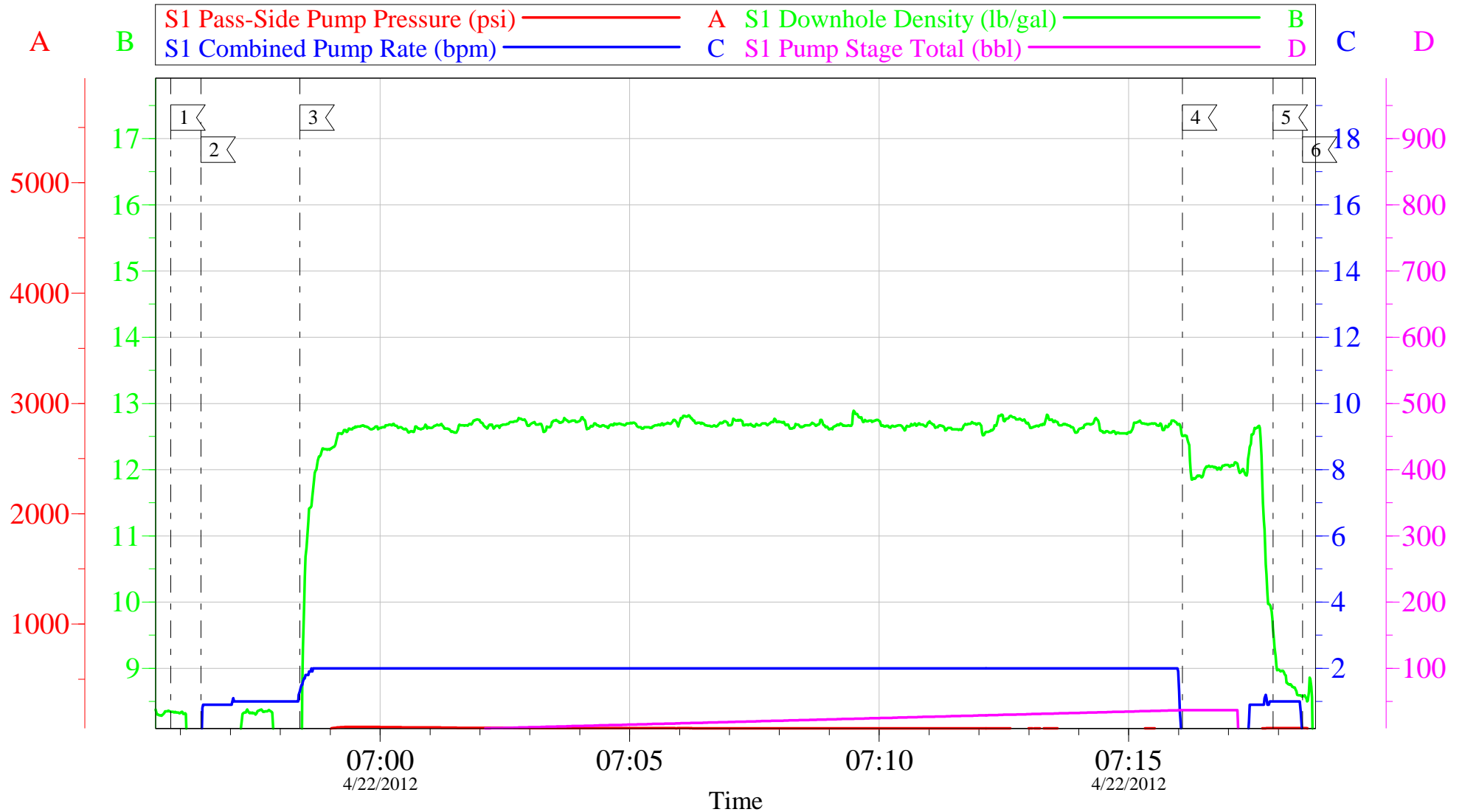
Job Date: 21-Apr-2012
Job Type: SURFACE
Cement Supervisor: MIKE MAGERS

Sales Order #: 9448780
ADC Used: YES
Elite # 6 ROB EICKHOFF

OptiCem v6.4.10
22-Apr-12 06:10

OXY CC 697-08-02B

TOPOUT 1



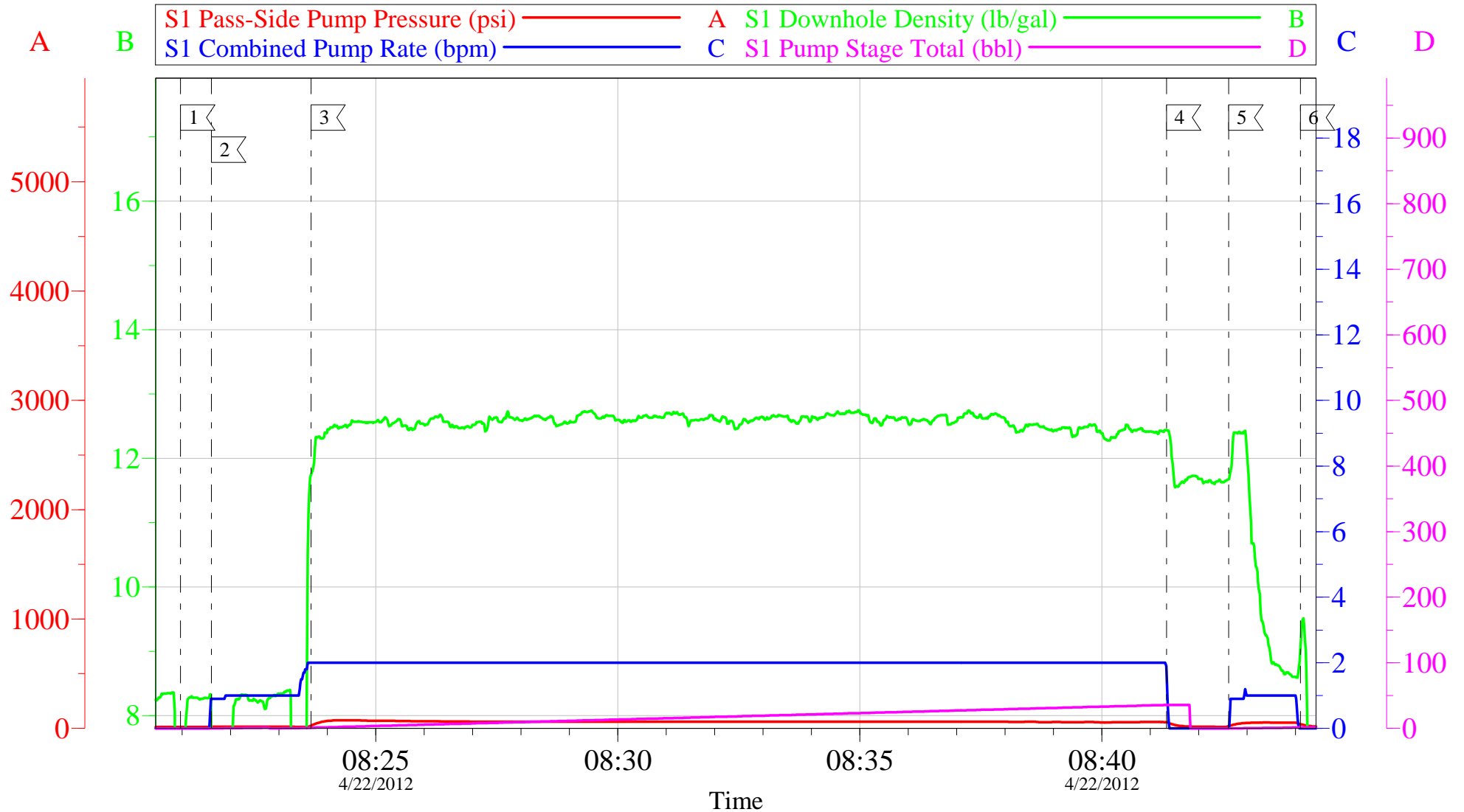
Local Event Log					
1	START JOB	06:55:48	2	FILL LINE	06:56:25
3	PUMP TOP OUT	06:58:24	4	SHUT DOWN	07:16:05
5	CLEAN LINE	07:17:54	6	END JOB	07:18:29

Customer:	OXY H&P 353	Job Date:	22-Apr-2012	Sales Order #:	9448780
Well Description:	CC 697-08-02B	Job Type:	TOPOUT 1	ADC Used:	YES
Company Rep:	ALEX VILLAGAS	Cement Supervisor:	MIKE MAGERS	Elite # 6	ROB EICKHOFF

OptiCem v6.4.10
22-Apr-12 07:28

OXY CC 697-08-02B

TOPOUT 2



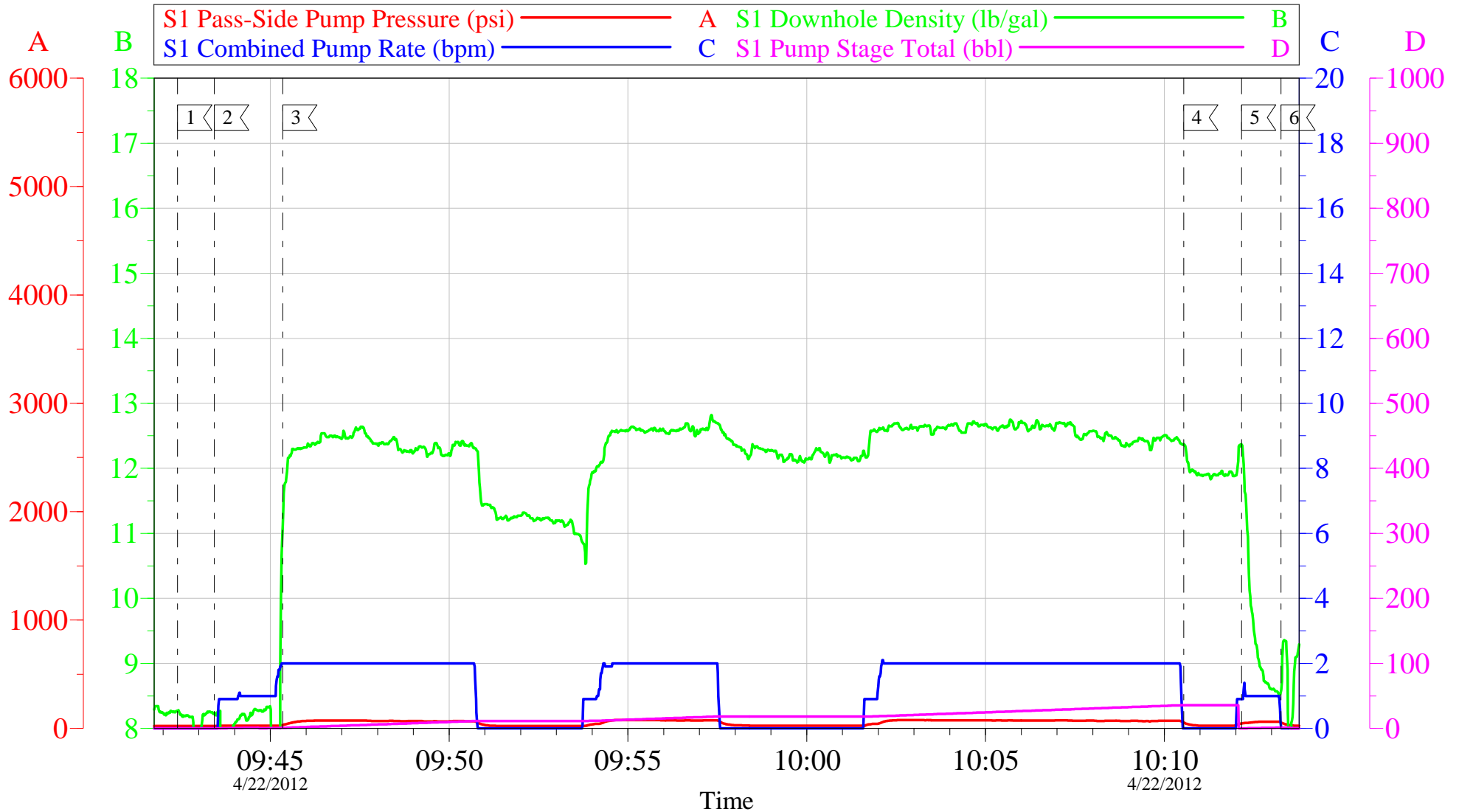
Local Event Log					
1	START JOB	08:20:58	2	FILL LINE	08:21:36
3	PUMP TOPOUT	08:23:40	4	SHUT DOWN	08:41:20
5	CLEAN LINE	08:42:37	6	END JOB	08:44:06

Customer:	OXY H&P 353	Job Date:	22-Apr-2012	Sales Order #:	9448780
Well Description:	CC 697-08-02B	Job Type:	TOPOUT 2	ADC Used:	YES
Company Rep:	ALEX VILLEGAS	Cement Supervisor:	MIKE MAGERS	Elite # 6	ROB EICKHOFF

OptiCem v6.4.10
22-Apr-12 08:51

OXY CC 697-08-02B

TOPOUT 3



Local Event Log

1	START JOB	09:42:25	2	FILL LINE	09:43:26	3	PUMP TOPOUT	09:45:21
4	SHUT DOWN	10:10:32	5	CLEAN LINE	10:12:09	6	END JOB	10:13:15

Customer: OXY H&P 353
Well Description: CC 697-08-02B
Company Rep: ALEX VILLEGAS

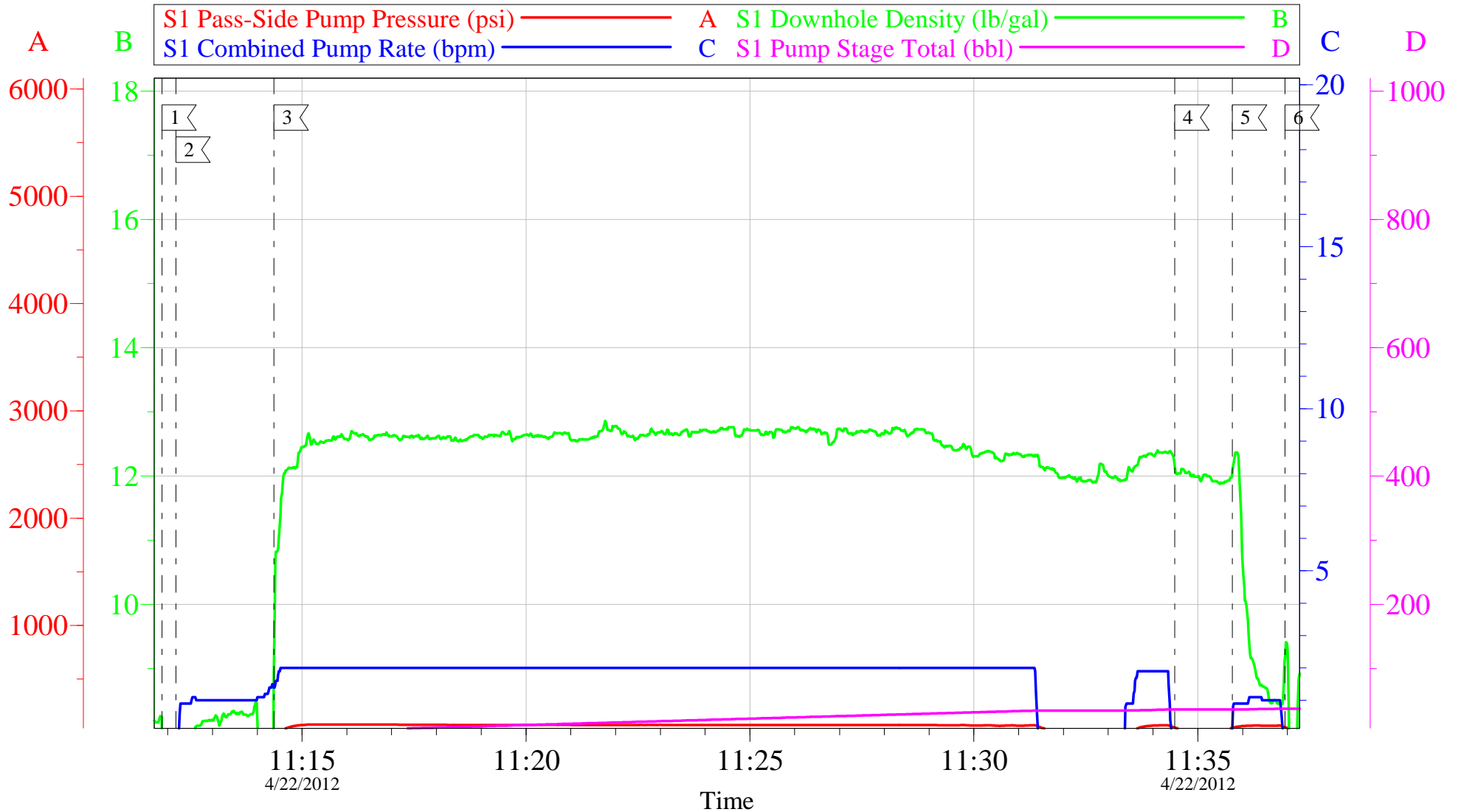
Job Date: 22-Apr-2012
Job Type: TOPOUT 3
Cement Supervisor: MIKE MAGERS

Sales Order #: 9448780
ADC Used: YES
Elite # 6 ROB EICKHOFF

OptiCem v6.4.10
22-Apr-12 10:21

OXY CC 697-08-02B

TOPOUT 4



Local Event Log

1 START JOB	11:11:52	2 FILL LINE	11:12:11	3 PUMP TOPOUT CEMENT	11:14:22
4 SHUT DOWN	11:34:29	5 CLEAN LINE	11:35:46	6 END JOB	11:36:57

Customer: OXY H&P 353
Well Description: CC 697-08-02B
Company Rep: ALEX VILLEGAS

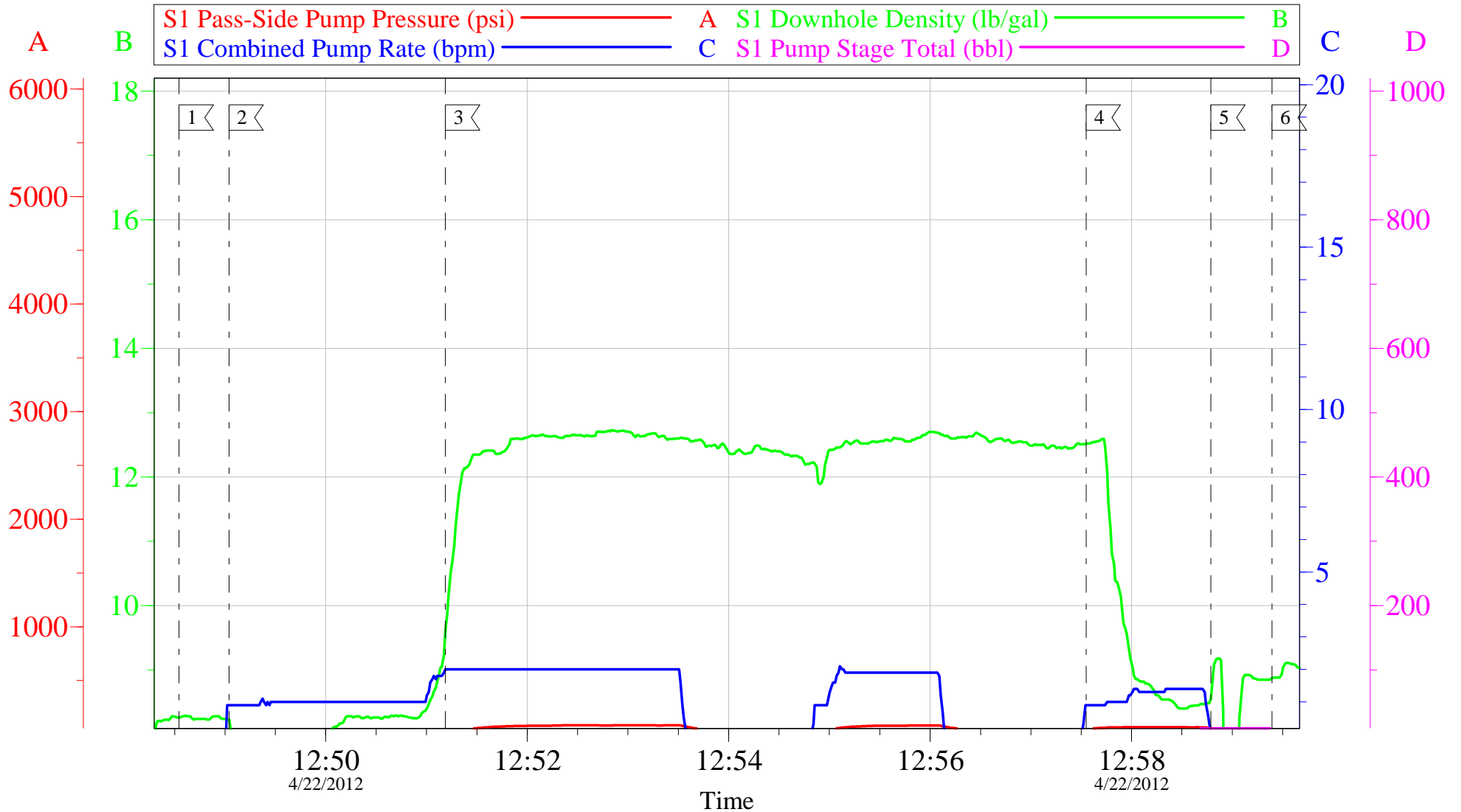
Job Date: 22-Apr-2012
Job Type: TOPOUT 4
Cement Supervisor: MIKE MAGERS

Sales Order #: 9448780
ADC Used: YES
Elite # 6 ROB EICKHOFF

OptiCem v6.4.10
22-Apr-12 11:45

OXY CC 697-08-02B

TOPOUT 5



Local Event Log

1 START JOB	12:48:33	2 FILL LINE	12:49:02	3 PUMP TOP OUT CEMENT	12:51:11
4 SHUT DOWN	12:57:33	5 CLEAN LINE	12:58:47	6 END JOB	12:59:24

Customer: OXY H&P 353
Well Description: CC 697-08-02B
Company Rep: ALEX VILLEGAS

Job Date: 22-Apr-2012
Job Type: TOPOUT 5
Cement Supervisor: MIKE MAGERS

Sales Order #: 9448780
ADC Used: YES
Elite # 6 ROB EICKHOFF

OptiCem v6.4.10
22-Apr-12 13:09

Sales Order #: 9448780	Line Item: 10	Survey Conducted Date: 4/22/2012
Customer: OXY GRAND JUNCTION EBUSINESS		Job Type (BOM): CMT SURFACE CASING BOM
Customer Representative: ALEX VILLEGAS		API / UWI: (leave blank if unknown) 05-045-20961
Well Name: Cascade Creek		Well Number: 697-08-02B
Well Type: Development Well	Well Country: United States of America	
H2S Present: No	Well State: Colorado	Well County: Garfield

Dear Customer,

We hope that you were satisfied with the service quality of this job performed by Halliburton. It is the aim of our management and service personnel to deliver equipment and service of a standard unmatched in the service sector of the energy industry.

Please take the time to let us know if our performance met with your satisfaction. Please be as critical as possible to ensure we constantly improve our service. Your comments are of great value to us and are intended for the exclusive use of Halliburton.

CUSTOMER SATISFACTION SURVEY

CATEGORY	CUSTOMER SATISFACTION RESPONSE	
Survey Conducted Date	The date the survey was conducted	4/22/2012
Survey Interviewer	The survey interviewer is the person who initiated the survey.	MICHAEL MAGERS (HX13672)
Customer Participation	Did the customer participate in this survey? (Y/N)	Yes
Customer Representative	Enter the Customer representative name	ALEX VILLEGAS
HSE	Was our HSE performance satisfactory? Circle Y or N	Yes
Equipment	Were you satisfied with our Equipment? Circle Y or N	Yes
Personnel	Were you satisfied with our people? Circle Y or N	Yes
Customer Comment	Customer's Comment	GREAT JOB THANKS

CUSTOMER SIGNATURE

Sales Order #: 9448780	Line Item: 10	Survey Conducted Date: 4/22/2012
Customer: OXY GRAND JUNCTION EBUSINESS		Job Type (BOM): CMT SURFACE CASING BOM
Customer Representative: ALEX VILLEGAS		API / UWI: (leave blank if unknown) 05-045-20961
Well Name: Cascade Creek		Well Number: 697-08-02B
Well Type: Development Well	Well Country: United States of America	
H2S Present: No	Well State: Colorado	Well County: Garfield

KEY PERFORMANCE INDICATORS

General	
Survey Conducted Date The date the survey was conducted	4/22/2012

Cementing KPI Survey	
Type of Job Select the type of job. (Cementing or Non-Cementing)	0
Select the Maximum Deviation range for this Job What is the highest deviation for the job you just completed? This may not be the maximum well deviation.	Vertical
Total Operating Time (hours) Total Operating Hours Including Rig-up, Pumping, Rig-down. Enter in decimal format.	9
HSE Incident, Accident, Injury HSE Incident, Accident, Injury. This should be recordable incidents only.	No
Was the job purpose achieved? Was the job delivered correctly as per customer agreed design?	Yes
Operating Hours (Pumping Hours) Total number of hours pumping fluid on this job. Enter in decimal format.	7
Customer Non-Productive Rig Time (hrs) Lost time due to Halliburton in the start, execution, or completion of an ordered service or product, or delays in a follow-on service. Enter in decimal format. 0 if none.	0
Type of Rig Classification Job Was Performed Type Of Rig (classification) Job Was Performed On	Drilling Rig (Portable)
Number Of JSAs Performed Number Of Jsas Performed	4
Number of Unplanned Shutdowns Unplanned shutdown is when injection stops for any period of time.	0
Was this a Primary Cement Job (Yes / No)	Yes

Sales Order #: 9448780	Line Item: 10	Survey Conducted Date: 4/22/2012
Customer: OXY GRAND JUNCTION EBUSINESS		Job Type (BOM): CMT SURFACE CASING BOM
Customer Representative: ALEX VILLEGAS		API / UWI: (leave blank if unknown) 05-045-20961
Well Name: Cascade Creek		Well Number: 697-08-02B
Well Type: Development Well	Well Country: United States of America	
H2S Present: No	Well State: Colorado	Well County: Garfield

Primary Cement Job= Casing job, Liner job, or Tie-back job.	
Did We Run Wiper Plugs? Did We Run Top And Bottom Casing Wiper Plugs?	Top
Mixing Density of Job Stayed in Designed Density Range (0-100%) Density Range defined as +/- .20 ppg. Calculation: Total BBLs cement mixed at designed density divided by total BBLs of cement multiplied by 100	94
Was Automated Density Control Used? Was Automated Density Control (ADC) Used ?	Yes
Pump Rate (percent) of Job Stayed At Designed Pump Rate Pump Rate range defined as +/- 1bbl/min. Calculation: Total BBLs of fluid pumped at the designed rate divided by Total BBLs of fluid pumped, multiplied by 100	94
Nbr of Remedial Sqz Jobs Rqd - Competition Number Of Remedial Squeeze Jobs Required After Primary Job Performed By Competition	0
Nbr of Remedial Plug Jobs Rqd - HES Number Of Remedial Plug Jobs Needed After Primary Plug Pumped By HES	0
Nbr of Remedial Sqz Jobs Rqd - HES Number Of Remedial Squeeze Jobs Required After Primary Job Performed By HES	0