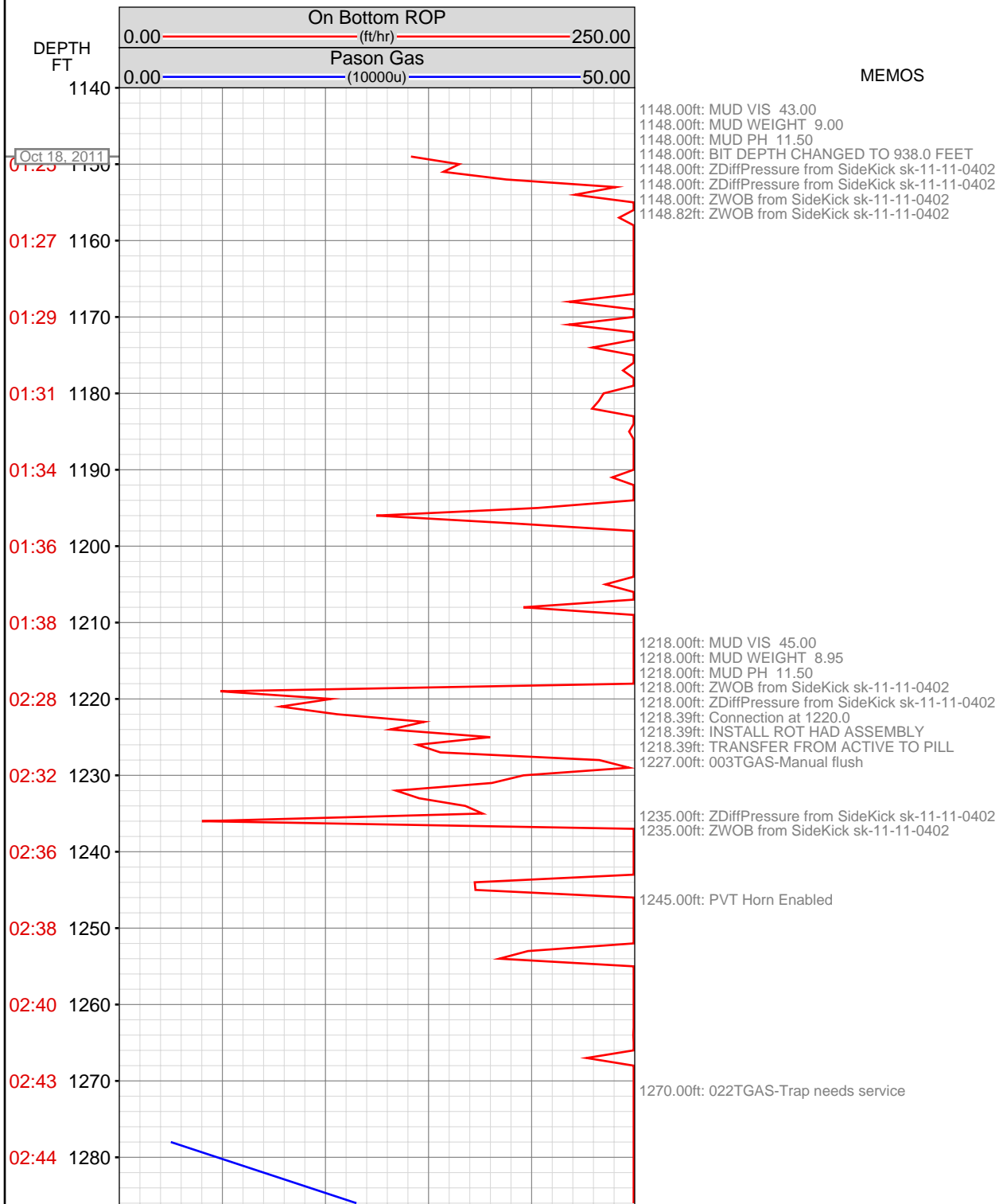
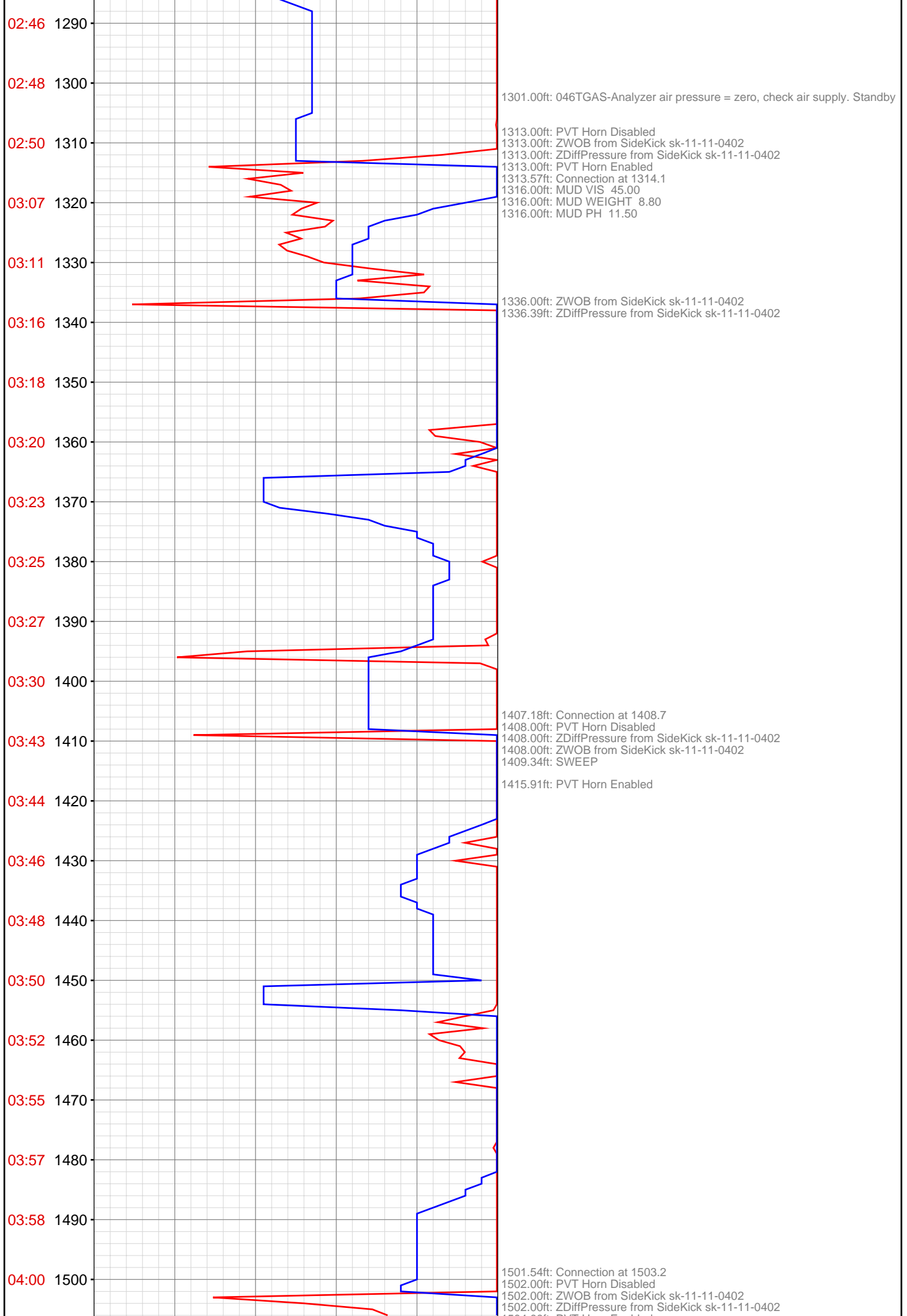
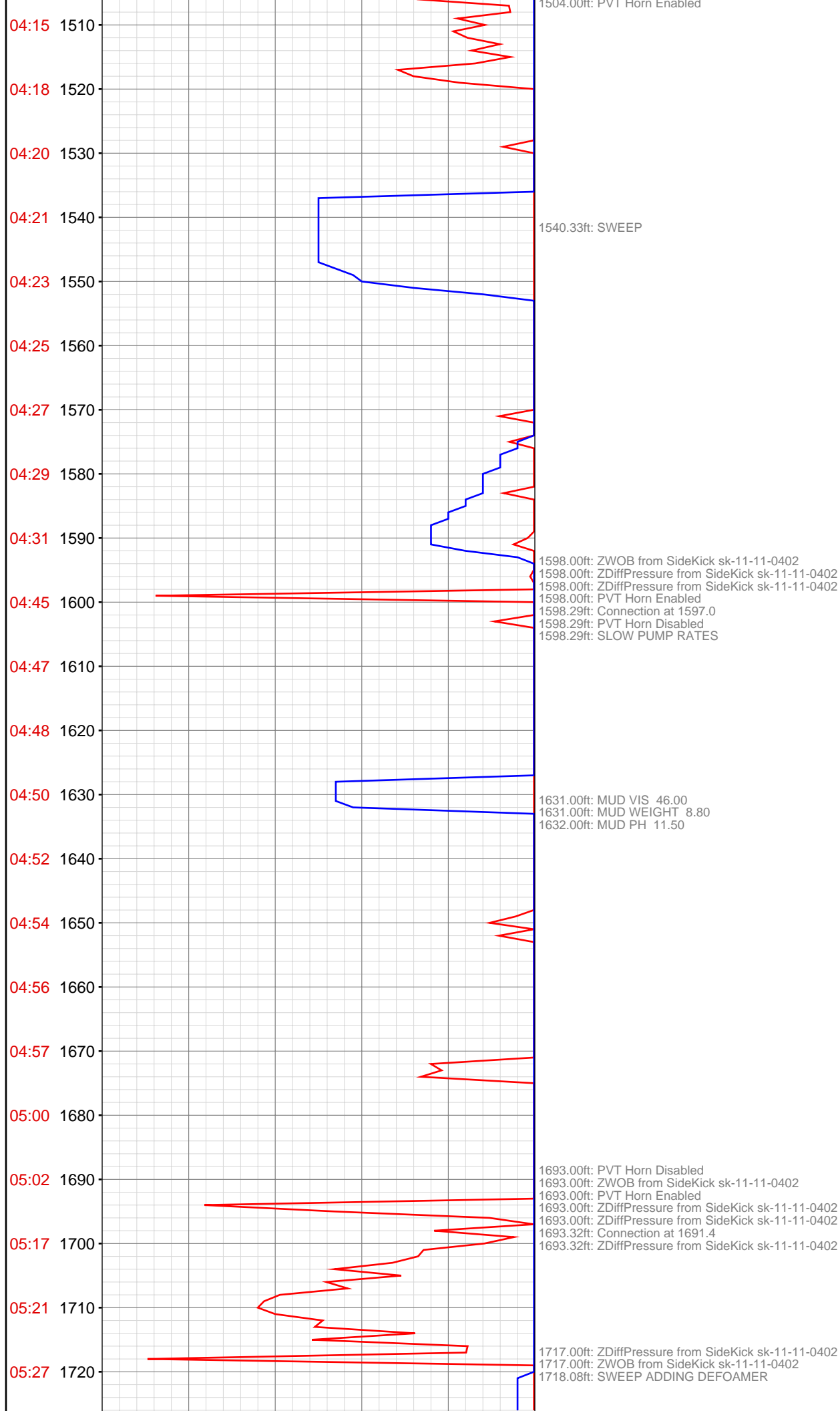


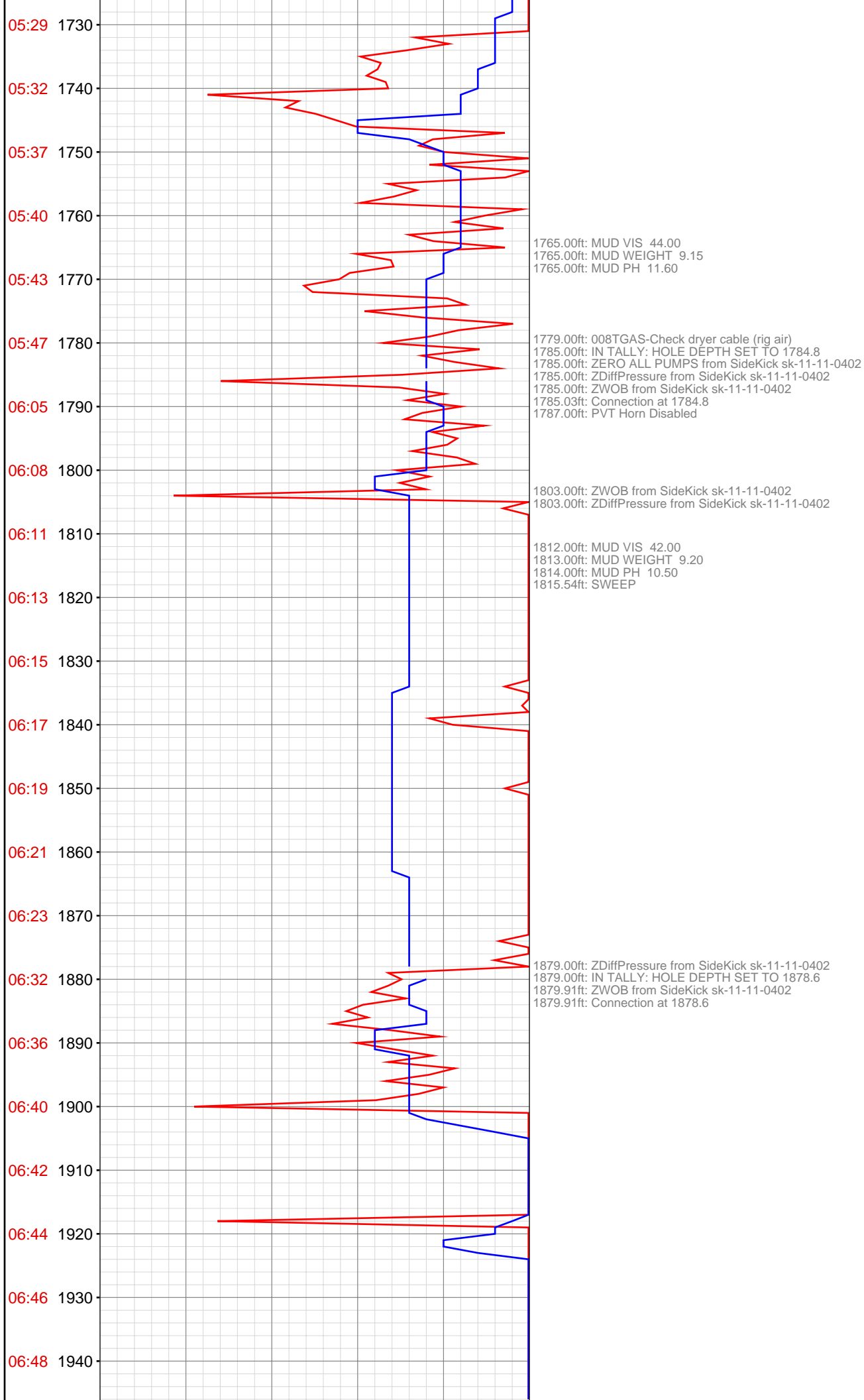
OPERATOR: EnCana Oil & Gas (USA), Inc.
WELL: FEDERAL 25-5B (PE25)
FIELD:
LOCATION: SW1/4 NW1/4, SECTION 25, T 7 S, R 96 W,
COUNTRY: USA
RIG: Pat-UTI 330

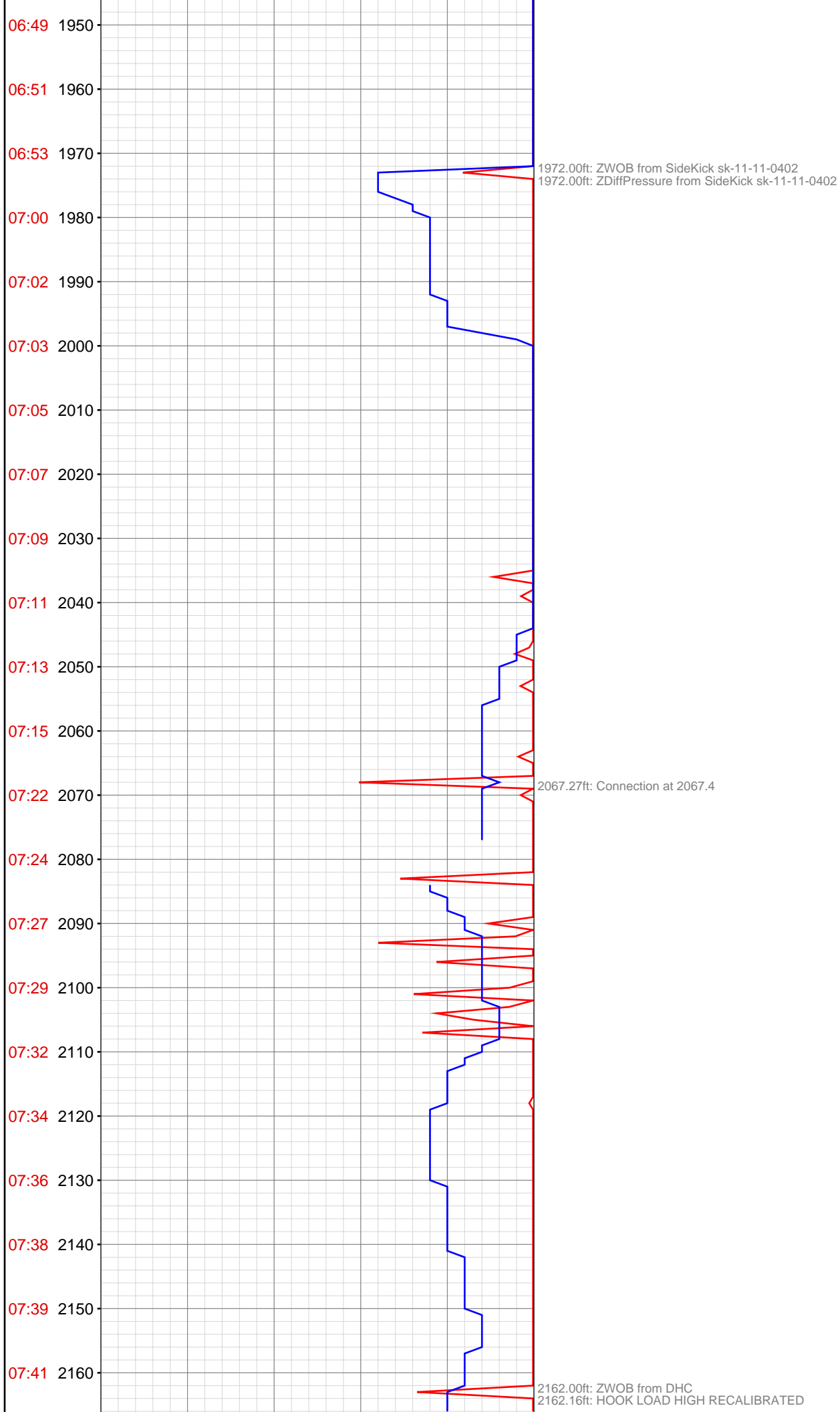
CONTRACTOR: Patterson-UTI Drilling Company
UNIQUE WELL ID: 05-045-20652-00
SPUD DATE: Oct 18, 2011 01:00
RELEASE DATE: Oct 20, 2011 20:00

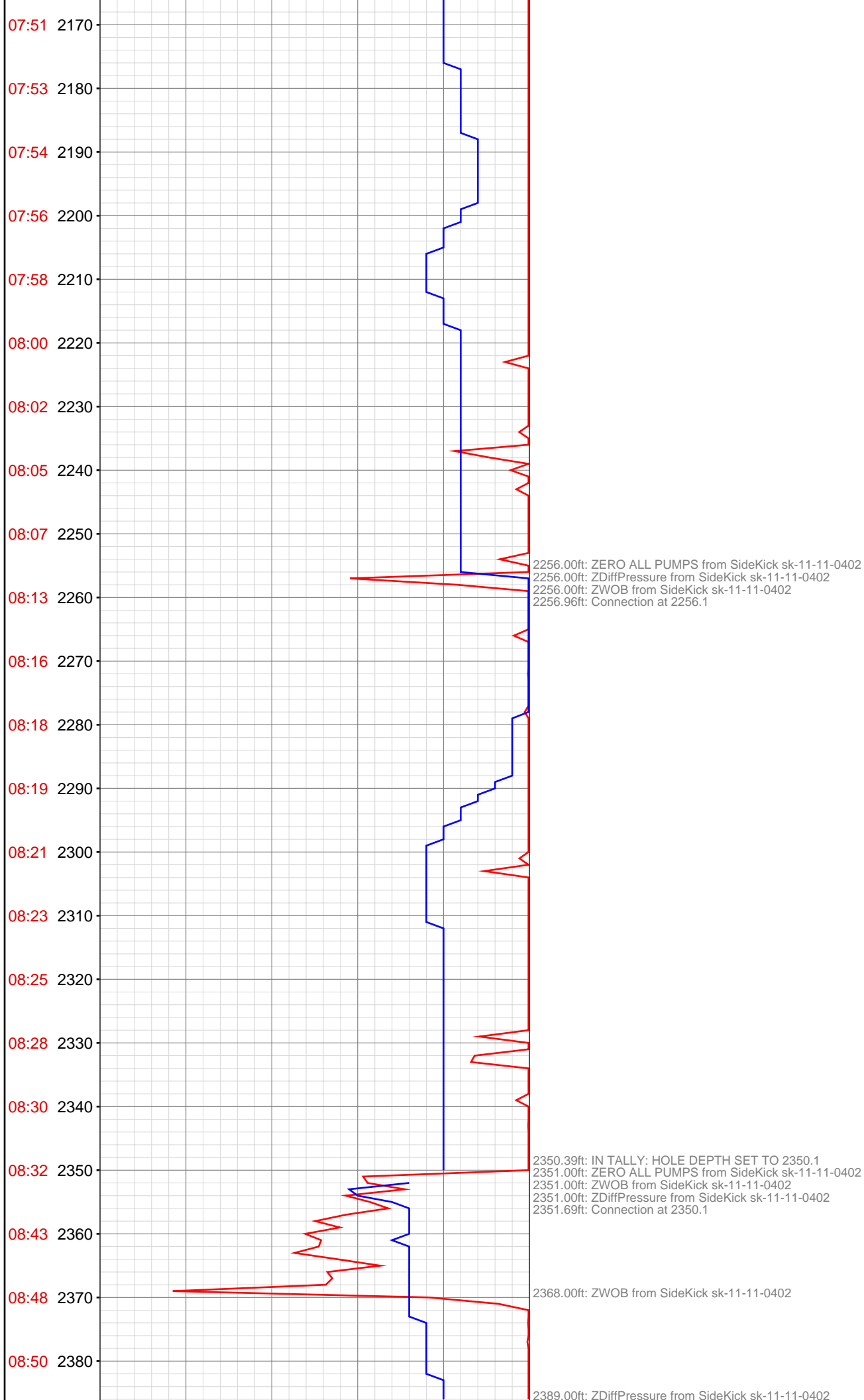


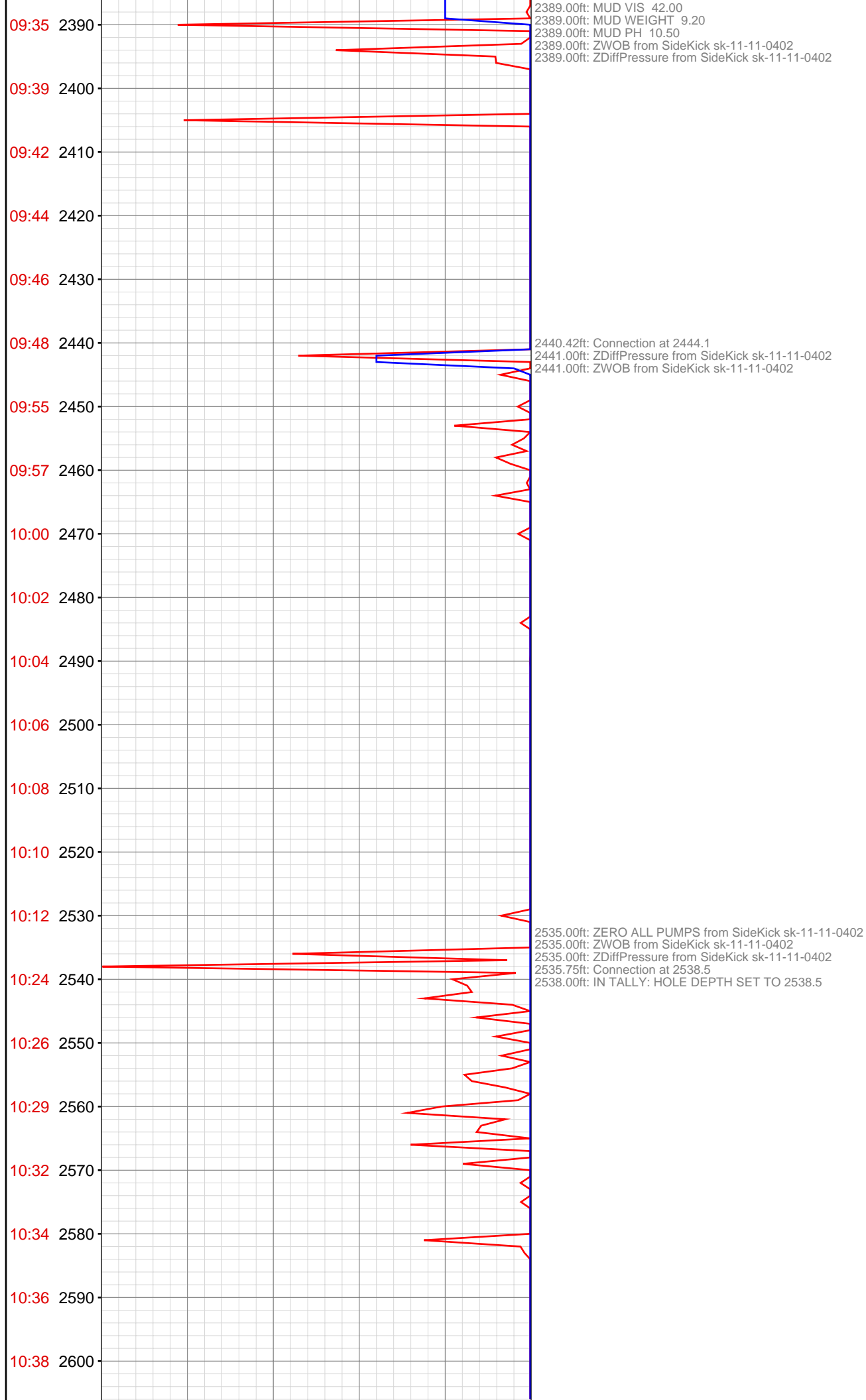


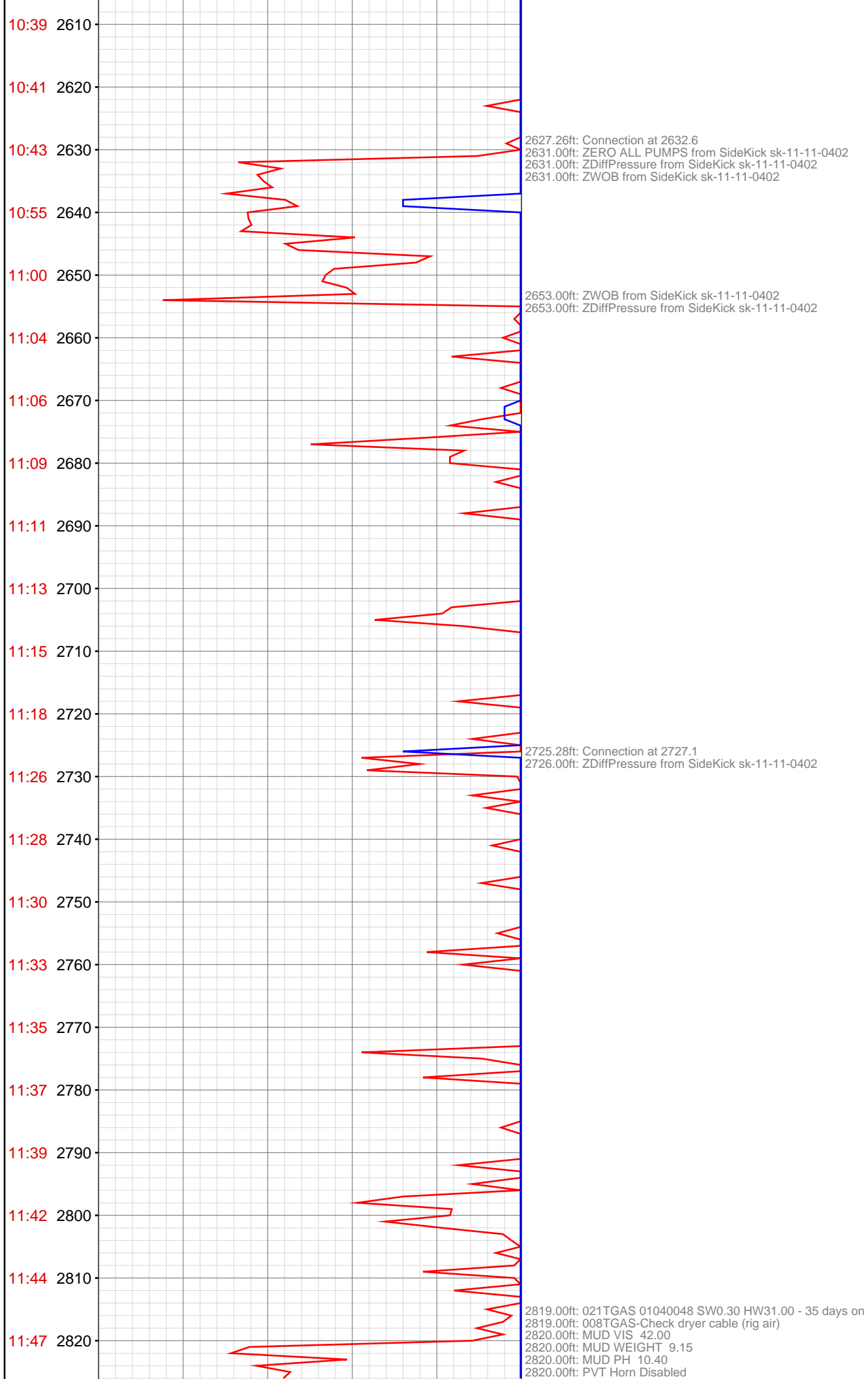


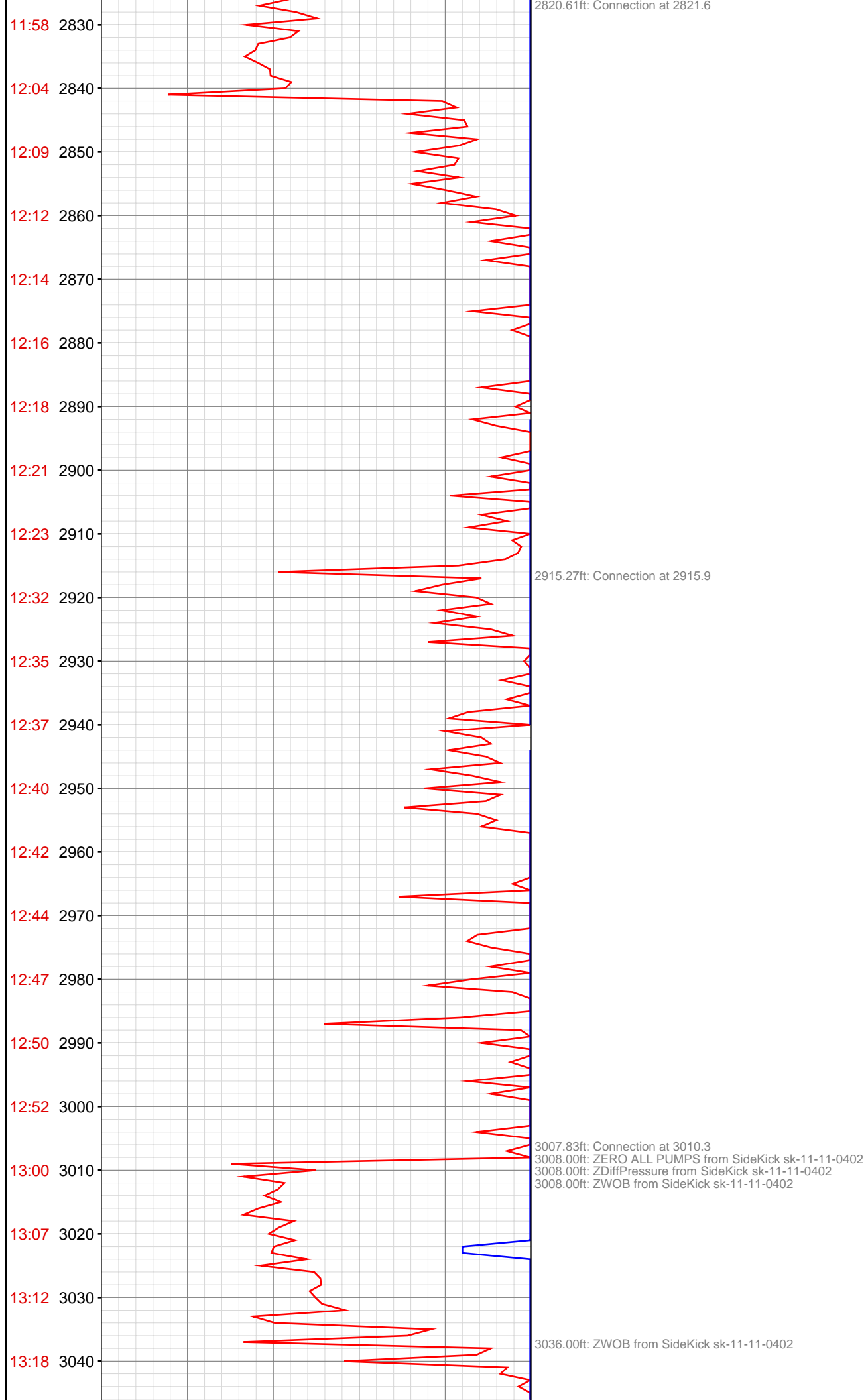


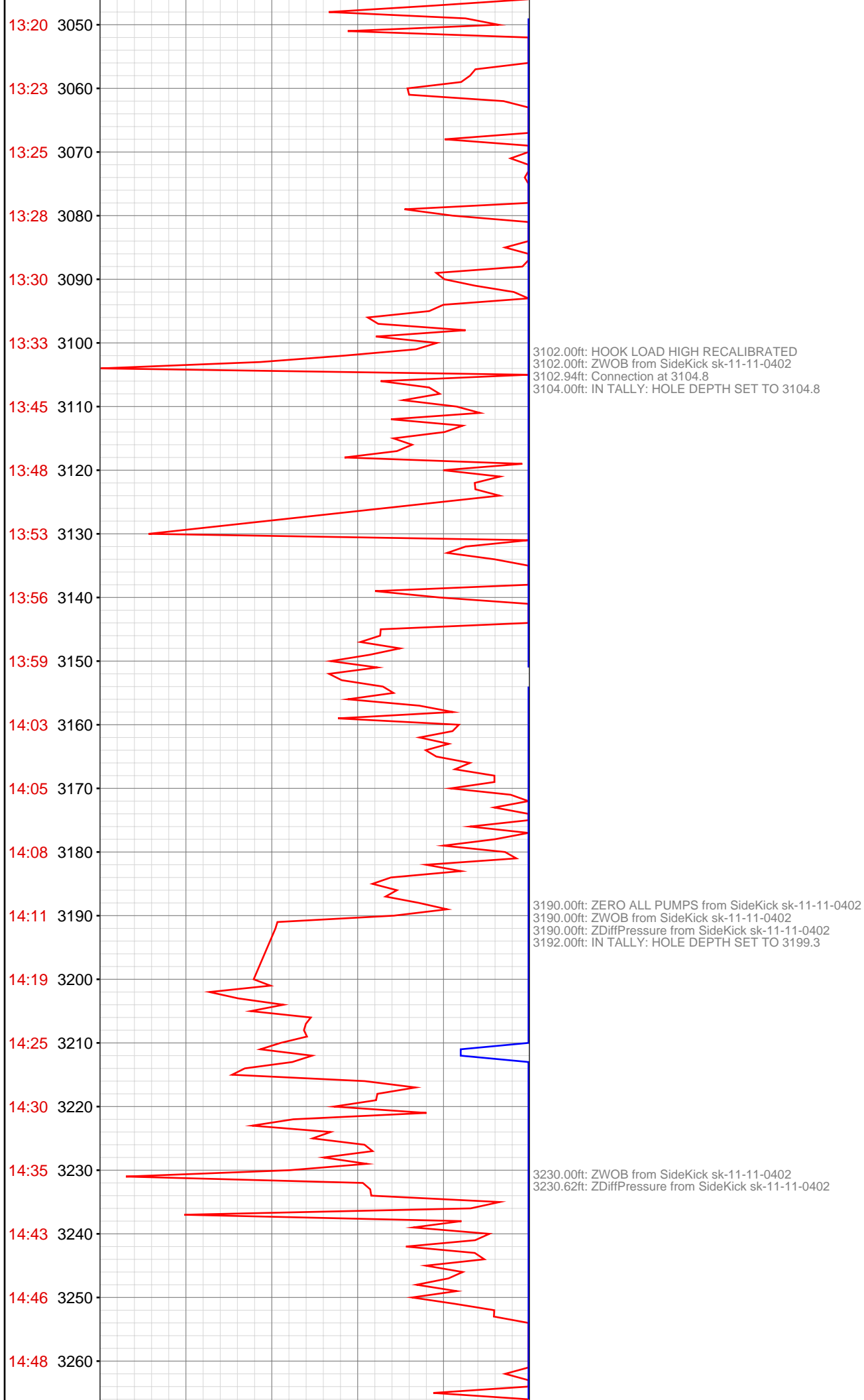


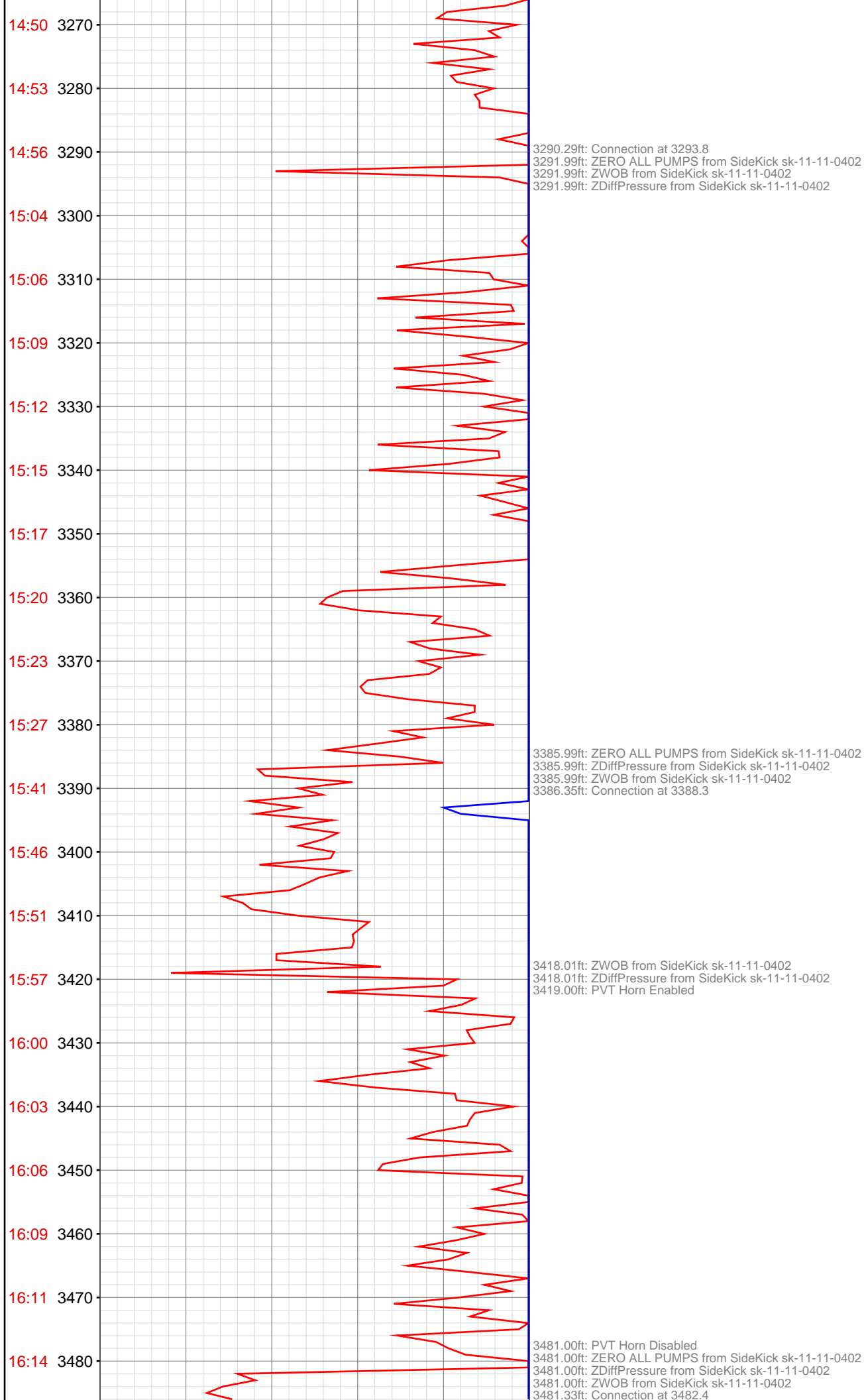


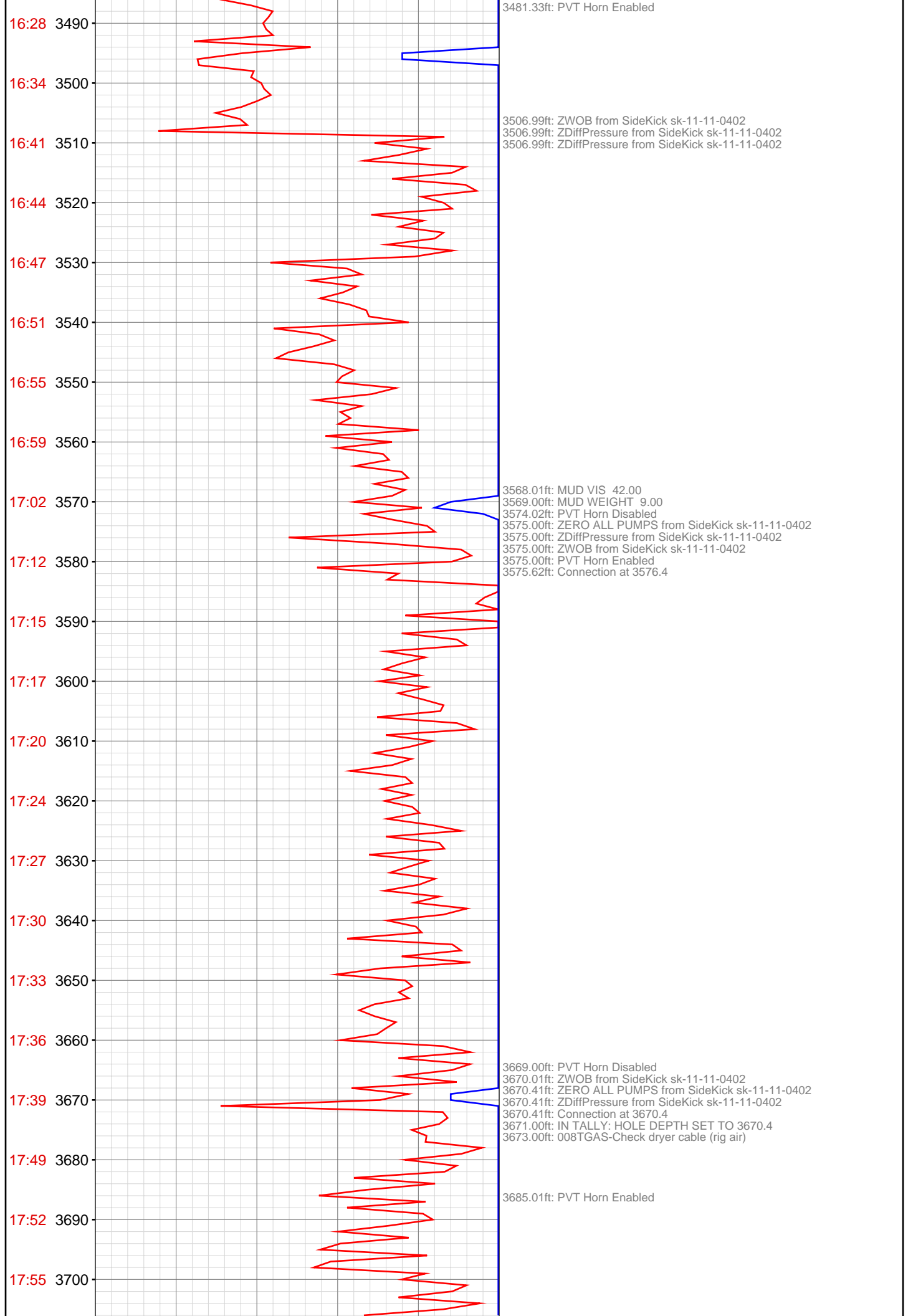


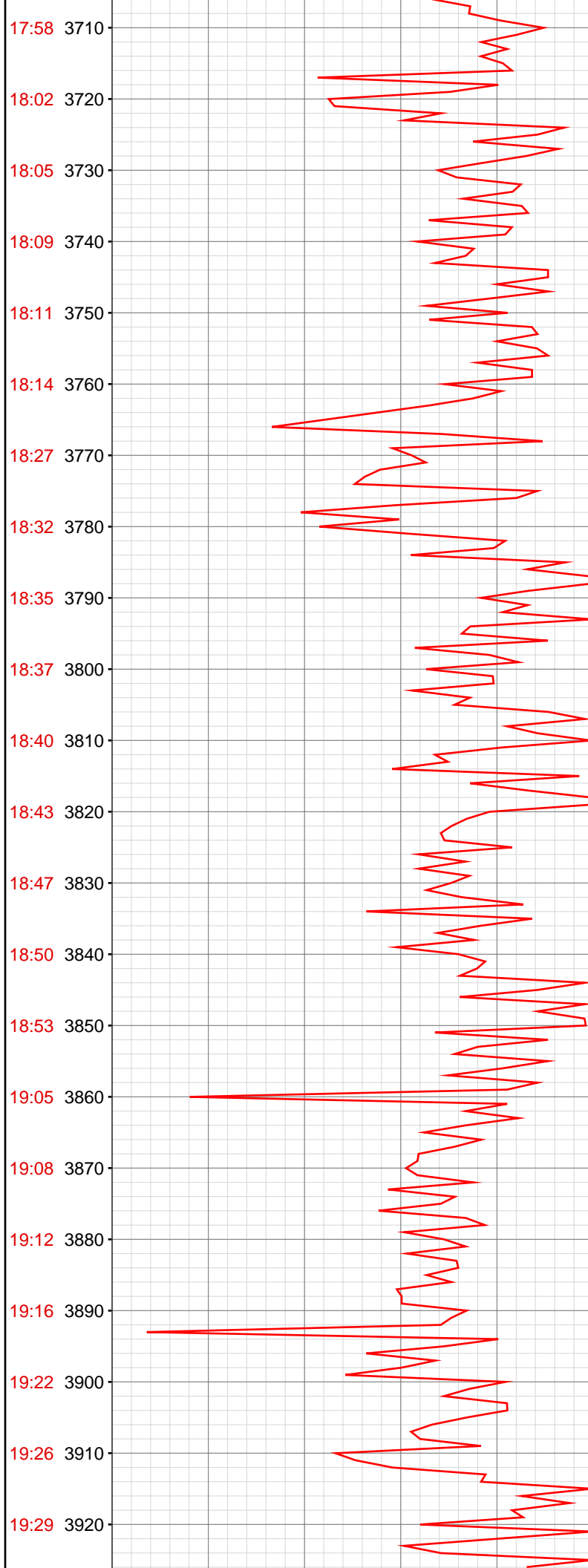










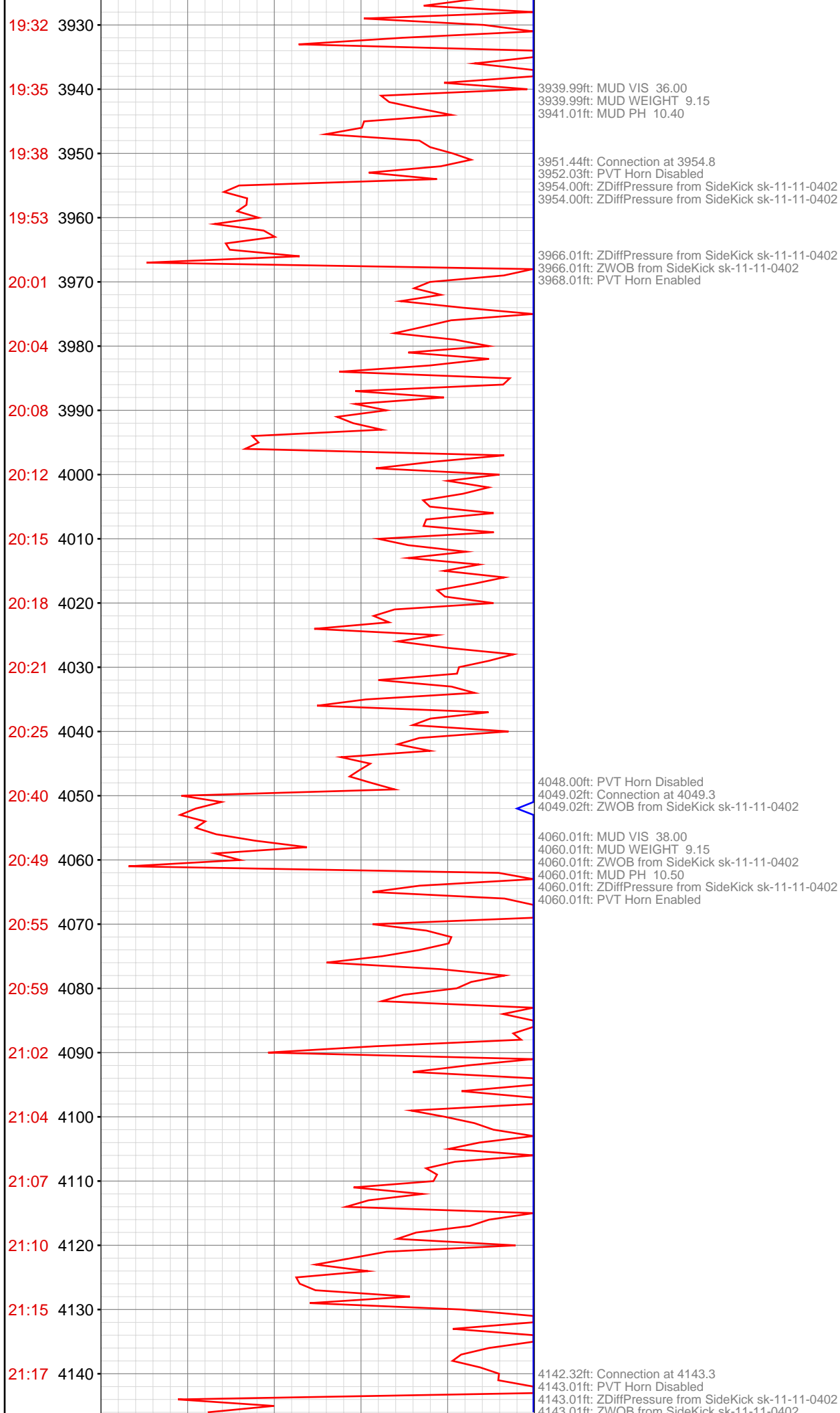


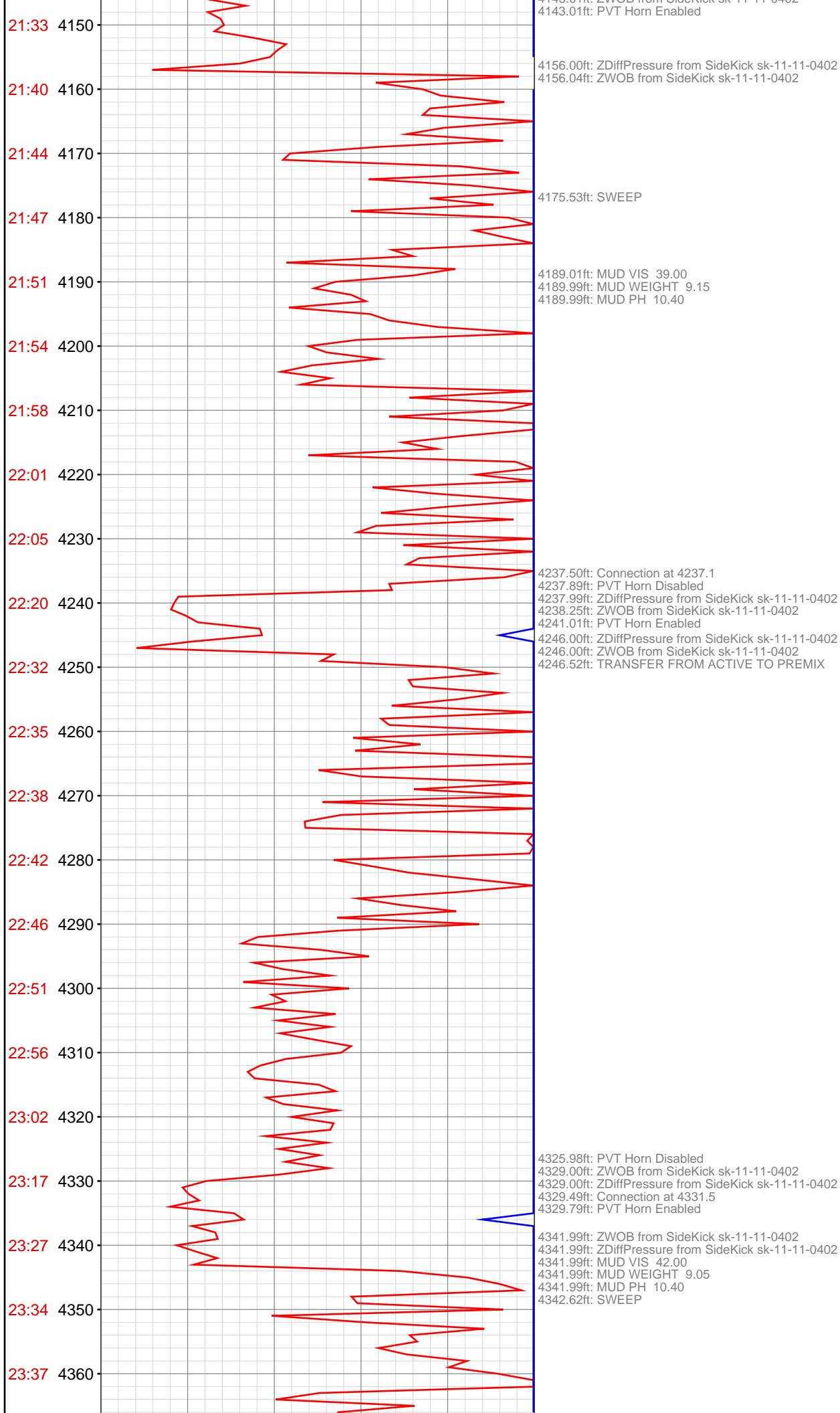
3760.99ft: PVT Horn Disabled
3761.12ft: Connection at 3765.0
3762.99ft: IN TALLY: HOLE DEPTH SET TO 3765.0
3762.99ft: ZWOB from SideKick sk-11-11-0402
3762.99ft: ZDiffPressure from SideKick sk-11-11-0402
3762.99ft: PVT Horn Enabled
3766.24ft: SWEEP

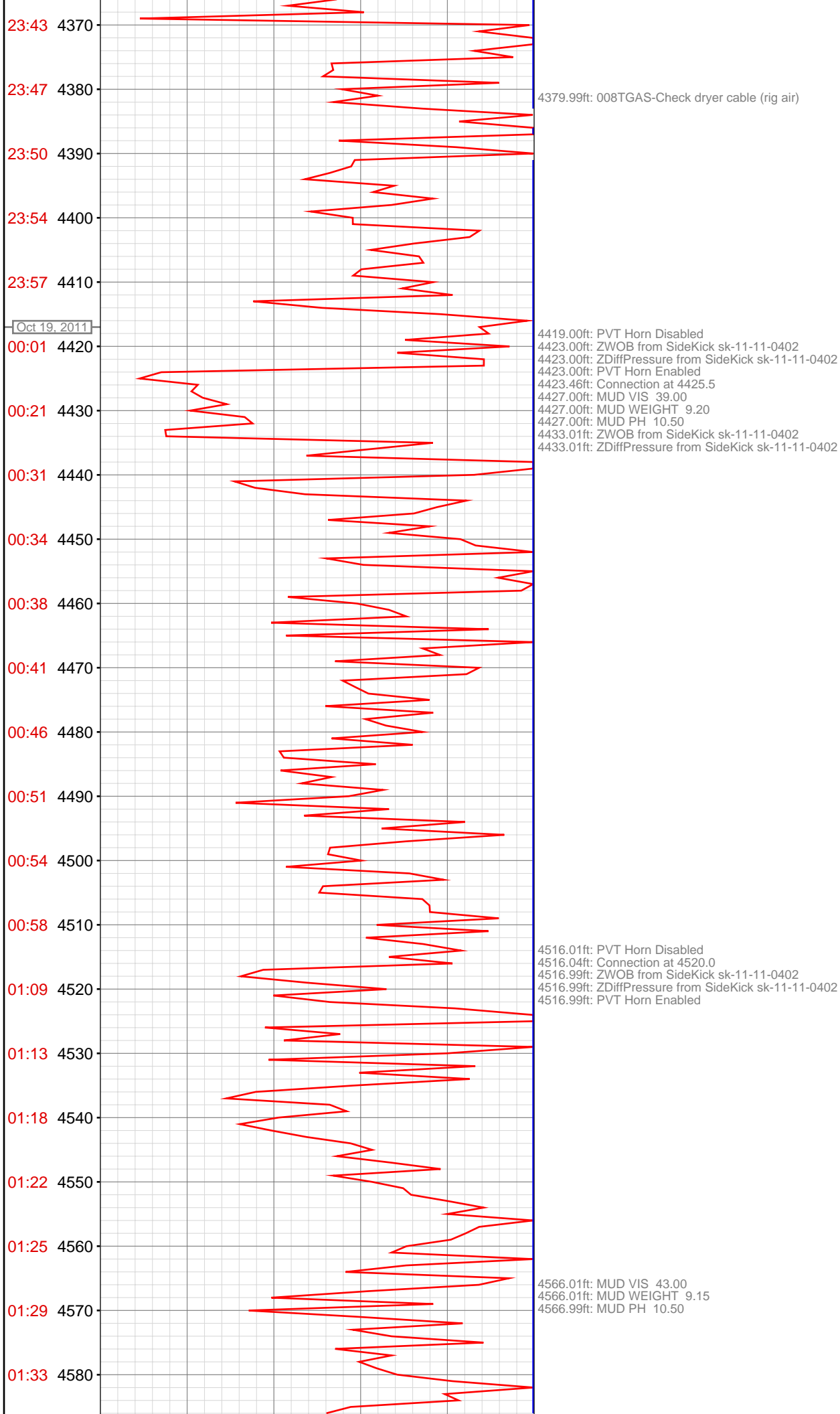
3785.99ft: MUD VIS 35.00
3785.99ft: MUD WEIGHT 9.25
3787.01ft: MUD PH 10.20

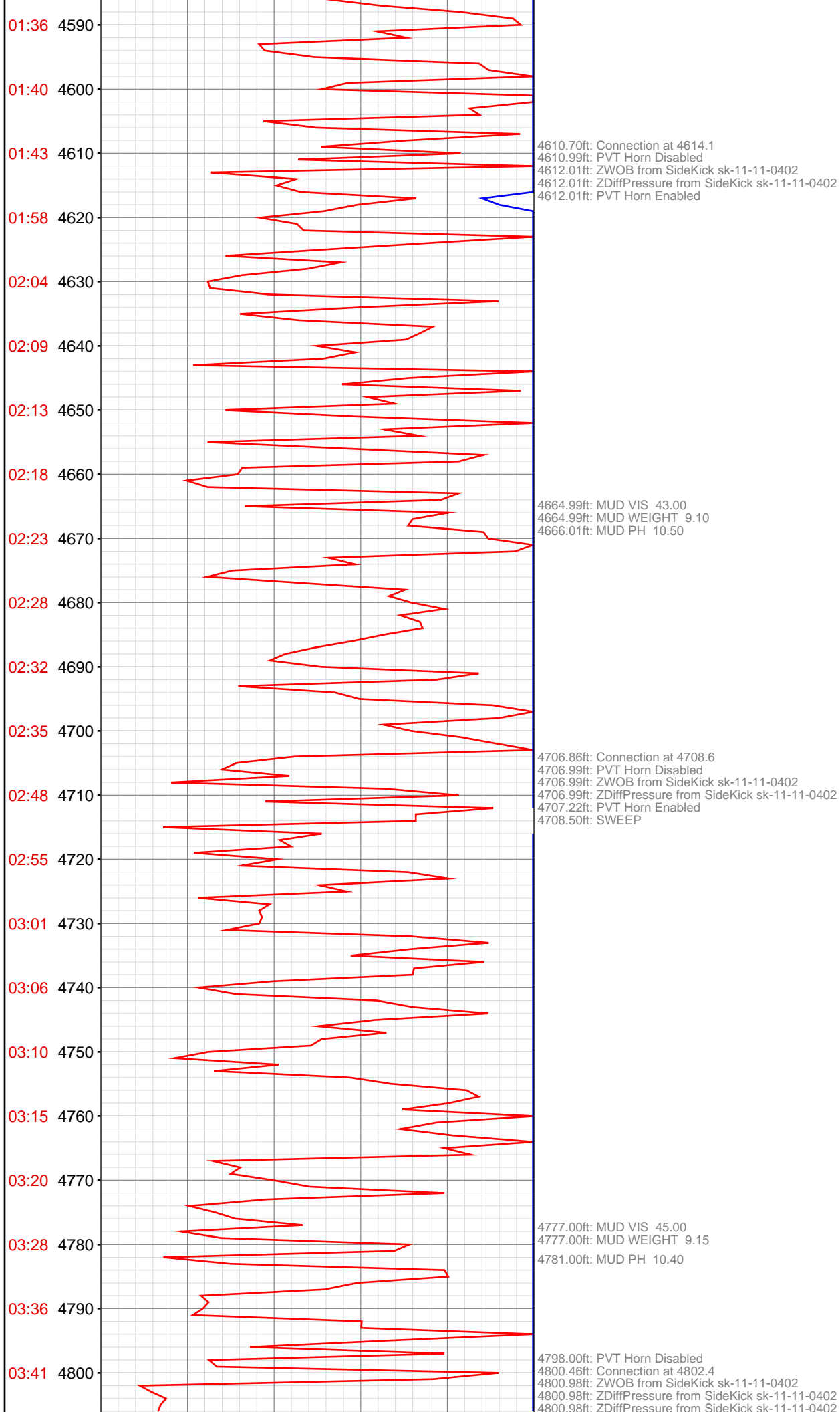
3858.73ft: Connection at 3859.7
3858.99ft: PVT Horn Disabled
3858.99ft: ZWOB from SideKick sk-11-11-0402
3858.99ft: ZDiffPressure from SideKick sk-11-11-0402
3858.99ft: PVT Horn Enabled

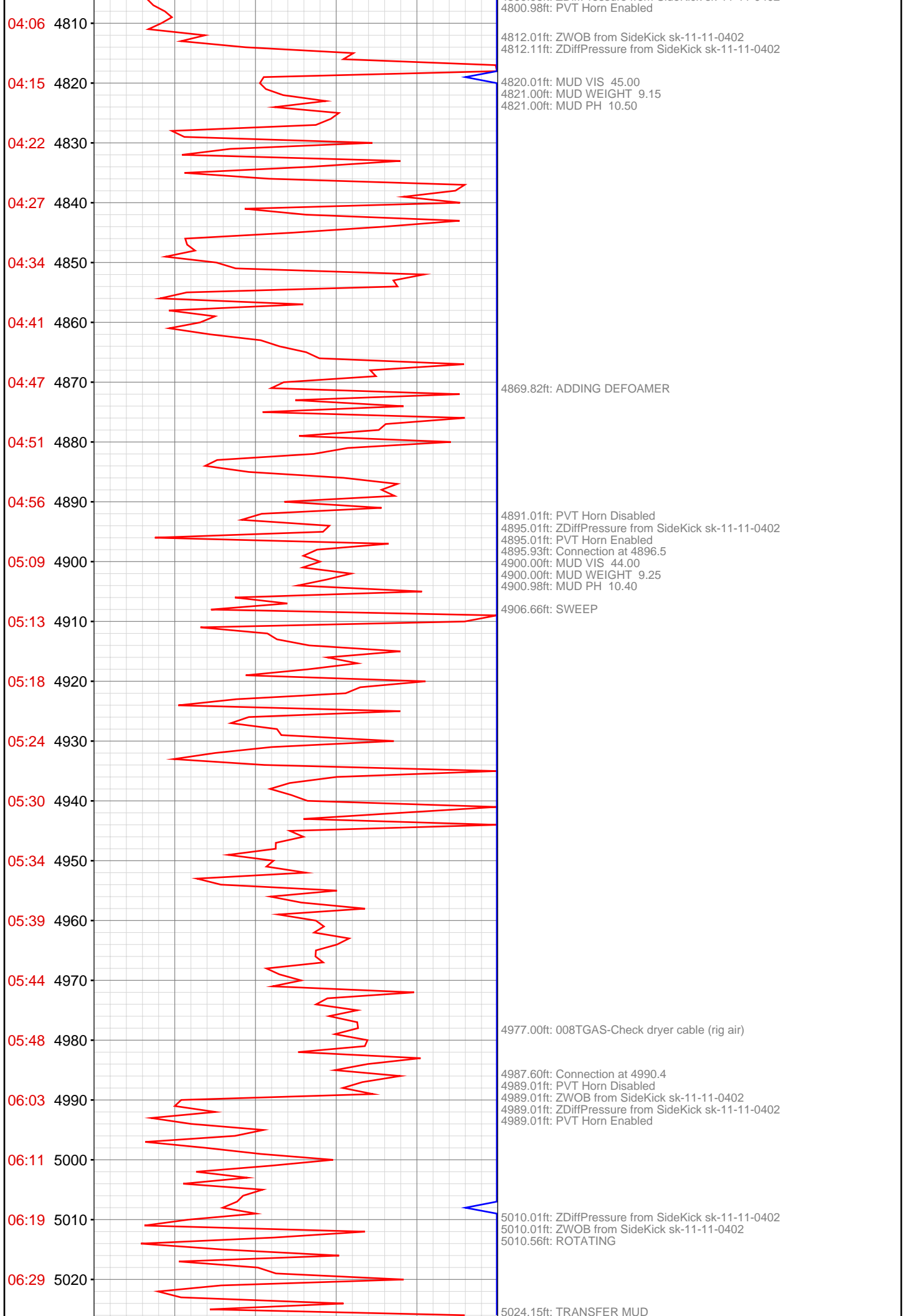
3891.99ft: PVT Horn Disabled
3891.99ft: ZWOB from SideKick sk-11-11-0402
3891.99ft: ZDiffPressure from SideKick sk-11-11-0402
3897.01ft: PVT Horn Enabled

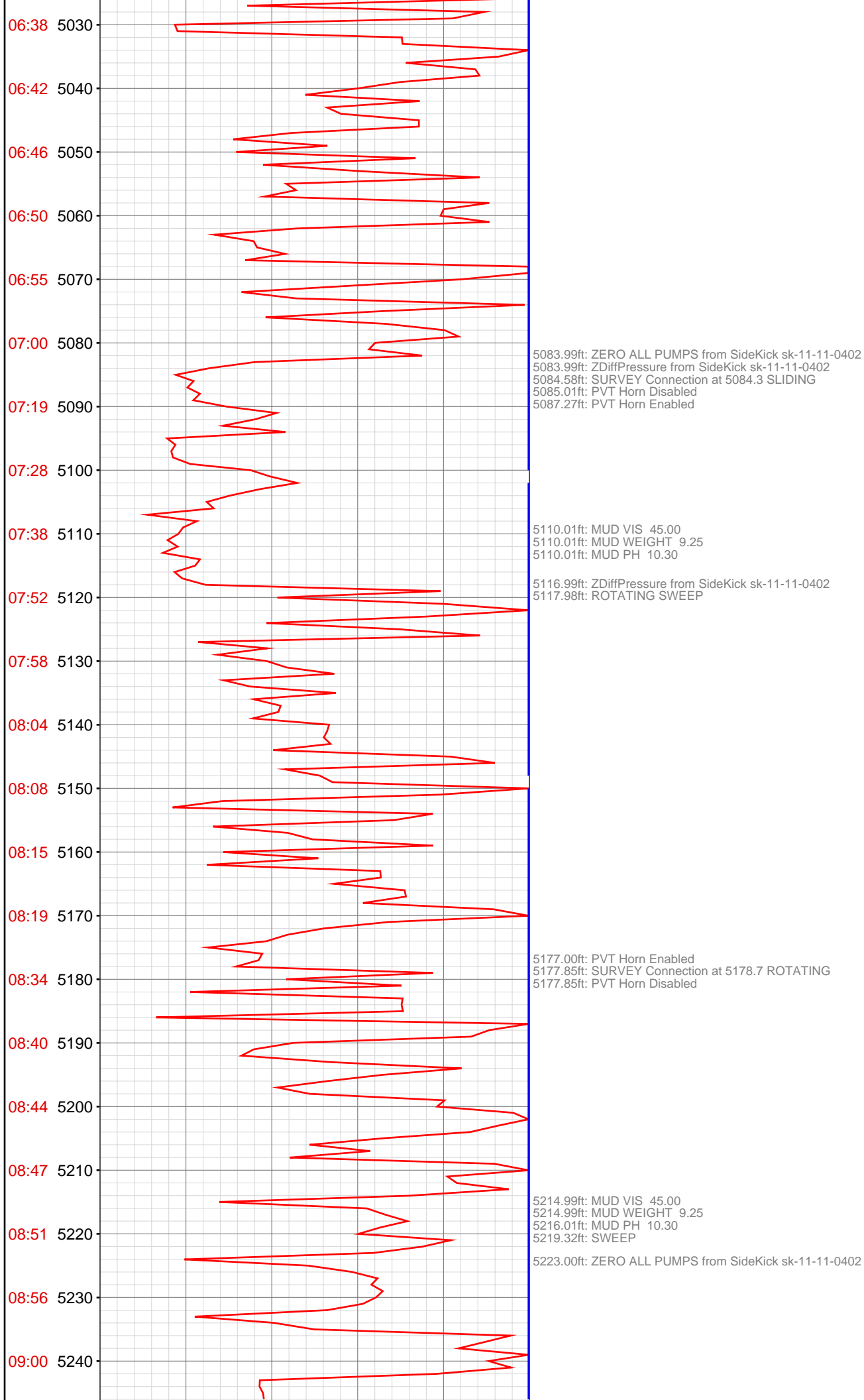


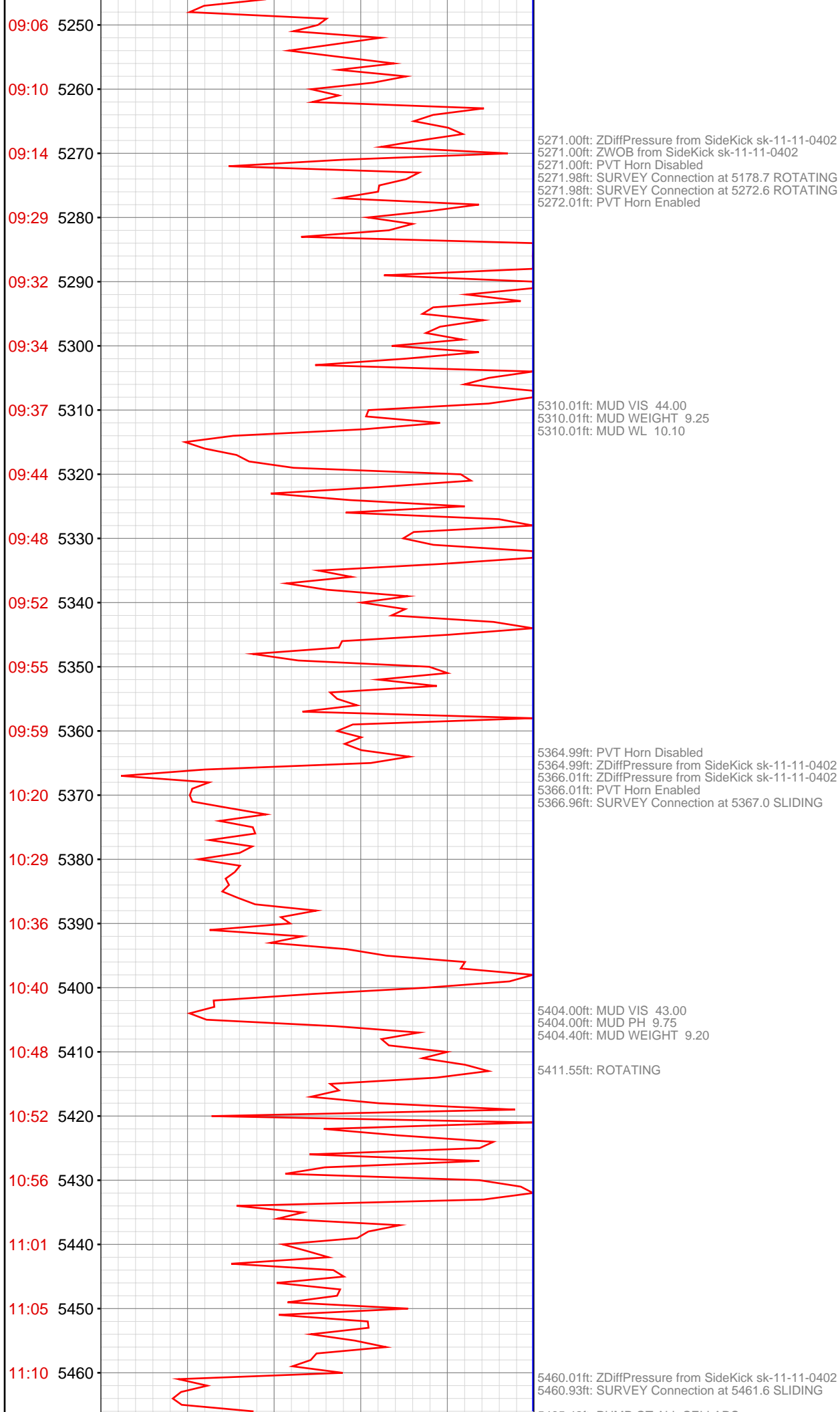












11:27 5470
11:32 5480
11:40 5490
11:47 5500
11:57 5510
12:00 5520
12:05 5530
12:13 5540
12:18 5550
12:32 5560
12:36 5570
12:40 5580
12:55 5590
13:03 5600
13:09 5610
13:18 5620
13:29 5630
13:33 5640
13:45 5650
13:48 5660
13:52 5670
13:57 5680

5499.02ft: 008TGAS-Check dryer cable (rig air)
5499.74ft: 021TGAS 01040048 SW0.30 HW31.00 - 36 days on
5504.00ft: ZDiffPressure from SideKick sk-11-11-0402
5504.20ft: ZWOB from SideKick sk-11-11-0402

5508.99ft: ZERO ALL PUMPS from SideKick sk-11-11-0402

5537.01ft: ZDiffPressure from SideKick sk-11-11-0402

5554.99ft: ZDiffPressure from SideKick sk-11-11-0402

5585.50ft: RIG SERVICE
5585.99ft: PVT Horn Disabled
5585.99ft: ZDiffPressure from SideKick sk-11-11-0402
5585.99ft: ZDiffPressure from SideKick sk-11-11-0402
5585.99ft: PVT Horn Enabled
5586.48ft: CANCEL RIG SURVICE X/O PUMPS

5625.00ft: ZDiffPressure from SideKick sk-11-11-0402

5649.02ft: ZDiffPressure from SideKick sk-11-11-0402
5649.02ft: ZWOB from SideKick sk-11-11-0402
5649.80ft: SURVEY Connection at 5556.0 ROTATING

5658.30ft: COR Connection at 5649.2

5665.16ft: TRANSFER MUD FROM UP RIGHTS TO ACTIVE

5674.02ft: MUD VIS 44.00
5674.02ft: MUD WEIGHT 9.25
5675.00ft: MUD PH 9.55

