
WILLIAMS PRODUCTION RMT INC - EBUS

**GM 441-34
GRAND VALLEY
Garfield County , Colorado**

Cement Surface Casing
23-Apr-2011

Post Job Report

The Road to Excellence Starts with Safety

Sold To #: 300721	Ship To #: 2846033	Quote #:	Sales Order #: 8072048
Customer: WILLIAMS PRODUCTION RMT INC - EBUS		Customer Rep: Towers, Ron	
Well Name: GM	Well #: 441-34	API/UWI #: 05-045-19904	
Field: GRAND VALLEY	City (SAP): PARACHUTE	County/Parish: Garfield	State: Colorado
Lat: N 39.485 deg. OR N 39 deg. 29 min. 5.698 secs.		Long: W 108.093 deg. OR W -109 deg. 54 min. 25.391 secs.	
Contractor: NABORS 574	Rig/Platform Name/Num: NABORS 574		
Job Purpose: Cement Surface Casing			
Well Type: Development Well		Job Type: Cement Surface Casing	
Sales Person: KOHL, KYLE		Srvc Supervisor: YOUNG, JEREMY	MBU ID Emp #: 418013

Job Personnel

HES Emp Name	Exp Hrs	Emp #	HES Emp Name	Exp Hrs	Emp #	HES Emp Name	Exp Hrs	Emp #
CALDWELL, JEFFREY S	5	369111	HARDRICK, RAYMOND Frank	5	391324	SLAUGHTER, JESSE Dean	5	454315
YOUNG, JEREMY R	5	418013						

Equipment

HES Unit #	Distance-1 way	HES Unit #	Distance-1 way	HES Unit #	Distance-1 way	HES Unit #	Distance-1 way
10025041	60 mile	10741119	60 mile	10951245	60 mile	11560046	60 mile
11562538	60 mile						

Job Hours

Date	On Location Hours	Operating Hours	Date	On Location Hours	Operating Hours	Date	On Location Hours	Operating Hours
04/23/2011	5	2.5						
TOTAL	<i>Total is the sum of each column separately</i>							

Job

Job Times

Formation Name	Formation Depth (MD)	Top	Bottom	Called Out	Date	Time	Time Zone
					23 - Apr - 2011	12:40	MST
Form Type			BHST	On Location	23 - Apr - 2011	16:30	MST
Job depth MD	1256. ft		Job Depth TVD	1256. ft	23 - Apr - 2011	18:36	MST
Water Depth			Wk Ht Above Floor	4. ft	23 - Apr - 2011	19:31	MST
Perforation Depth (MD)	<i>From</i>		<i>To</i>		23 - Apr - 2011	21:45	MST

Well Data

Description	New / Used	Max pressure psig	Size in	ID in	Weight lbm/ft	Thread	Grade	Top MD ft	Bottom MD ft	Top TVD ft	Bottom TVD ft
OPEN HOLE				13.5				.	1270.		
SURFACE CASING	Unknown		9.625	9.001	32.3		H-40	.	1256.		

Tools and Accessories

Type	Size	Qty	Make	Depth	Type	Size	Qty	Make	Depth	Type	Size	Qty	Make
Guide Shoe					Packer					Top Plug	9.625	1	HES
Float Shoe					Bridge Plug					Bottom Plug			
Float Collar					Retainer					SSR plug set			
Insert Float										Plug Container	9.625	1	HES
Stage Tool										Centralizers			

Miscellaneous Materials

Gelling Agt	Conc	Surfactant	Conc	Acid Type	Qty	Conc %
Treatment Fld	Conc	Inhibitor	Conc	Sand Type	Size	Qty

Fluid Data

Stage/Plug #: 1									
Fluid #	Stage Type	Fluid Name	Qty	Qty uom	Mixing Density lbm/gal	Yield ft3/sk	Mix Fluid Gal/sk	Rate bbl/min	Total Mix Fluid Gal/sk

Stage/Plug #: 1

Stage/Plug #: 1									
Fluid #	Stage Type	Fluid Name	Qty	Qty uom	Mixing Density lbm/gal	Yield ft ³ /sk	Mix Fluid Gal/sk	Rate bbl/min	Total Mix Fluid Gal/sk
1	Water Spacer	FRESH WATER	20.00	bbl	8.4	.0	.0	6	
2	VersaCem Lead Cement	VERSACEM (TM) SYSTEM (452010)	180.0	sacks	12.3	2.38	13.75	8	13.75
	13.75 Gal	FRESH WATER							
3	VersaCem Tail Cement	VERSACEM (TM) SYSTEM (452010)	160.0	sacks	12.8	2.11	11.75	8	11.75
	11.75 Gal	FRESH WATER							
4	Displacement Fluid	FRESH WATER	95.40	bbl	8.4	.0	.0	10	
Calculated Values		Pressures		Volumes					
Displacement	95.4	Shut In: Instant		Lost Returns	NO	Cement Slurry	136.4	Pad	
Top Of Cement	SURFACE	5 Min		Cement Returns	27	Actual Displacement	95.4	Treatment	
Frac Gradient		15 Min		Spacers	20	Load and Breakdown		Total Job	252
Rates									
Circulating		Mixing	8	Displacement	10	Avg. Job			8
Cement Left In Pipe	Amount	44 ft	Reason	Shoe Joint					
Frac Ring # 1 @	ID	Frac ring # 2 @	ID	Frac Ring # 3 @	ID	Frac Ring # 4 @	ID		
The Information Stated Herein Is Correct				Customer Representative Signature					

The Road to Excellence Starts with Safety

Sold To #: 300721	Ship To #: 2846033	Quote #:	Sales Order #: 8072048
Customer: WILLIAMS PRODUCTION RMT INC - EBUS		Customer Rep: Towers, Ron	
Well Name: GM		Well #: 441-34	API/UWI #: 05-045-19904
Field: GRAND VALLEY	City (SAP): PARACHUTE	County/Parish: Garfield	State: Colorado
Legal Description:			
Lat: N 39.485 deg. OR N 39 deg. 29 min. 5.698 secs.		Long: W 108.093 deg. OR W -109 deg. 54 min. 25.391 secs.	
Contractor: NABORS 574		Rig/Platform Name/Num: NABORS 574	
Job Purpose: Cement Surface Casing			Ticket Amount:
Well Type: Development Well		Job Type: Cement Surface Casing	
Sales Person: KOHL, KYLE		Srvc Supervisor: YOUNG, JEREMY	MBU ID Emp #: 418013

Activity Description	Date/Time	Cht #	Rate bbl/min	Volume bbl		Pressure psig		Comments
				Stage	Total	Tubing	Casing	
Call Out	04/23/2011 12:40							TD 1270 FT, TP 1256 FT, SHOE 44 FT, HOLE 13 1/2 IN, MUD WT 10.4 PPG, CSG 9 5/8 IN 32.3 LB/FT H-40
Pre-Convoy Safety Meeting	04/23/2011 14:50							WITH ALL HES PERSONNEL
Crew Leave Yard	04/23/2011 15:00							
Arrive At Loc	04/23/2011 16:30							RIG WAS RUNNING CASING UPON HES ARRIVAL
Assessment Of Location Safety Meeting	04/23/2011 17:00							WITH ALL HES PERSONNEL
Other	04/23/2011 17:05							SPOT EQUIPMENT
Pre-Rig Up Safety Meeting	04/23/2011 17:25							WITH ALL HES PERSONNEL
Rig-Up Equipment	04/23/2011 17:30							
Pre-Job Safety Meeting	04/23/2011 18:20							WITH ALL PERSONNEL ON LOCATION
Start Job	04/23/2011 18:36							
Other	04/23/2011 18:37		1.5				40.0	FILL LINES
Test Lines	04/23/2011 18:38							TEST LINES TO 3125 PSI. PRESSURE HOLDING
Pump Spacer 1	04/23/2011 18:42		6	20			155.0	FRESH WATER
Pump Lead Cement	04/23/2011 18:50		8	76.3			310.0	180 SKS AT 12.3 PPG, 2.38 FT3/SK, 13.75 GAL/SK
Activity Description	Date/Time	Cht	Rate bbl/min	Volume bbl		Pressure psig		Comments

Sold To # : 300721

Ship To # :2846033

Quote # :

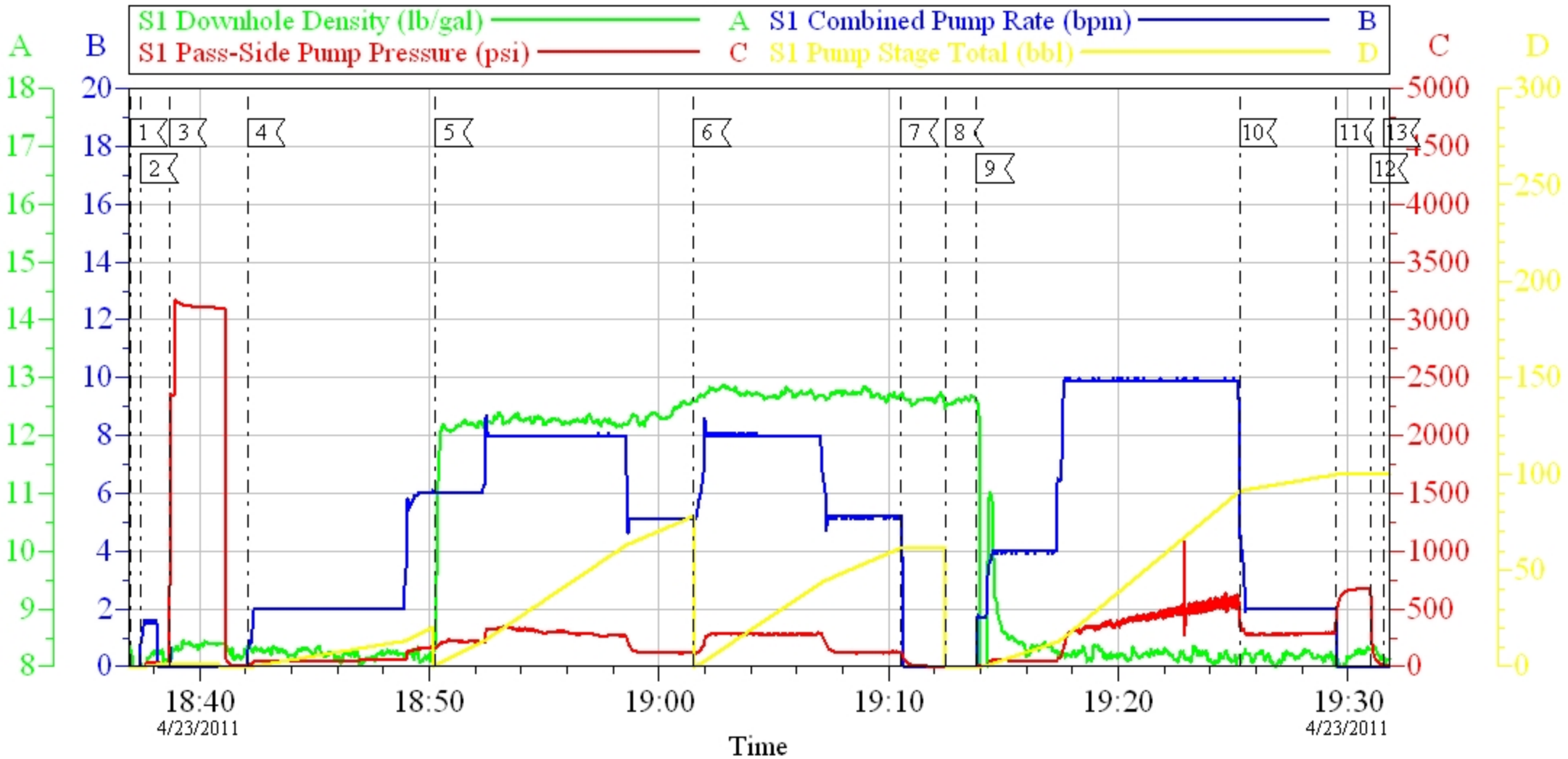
Sales Order # : 8072048

		#		Stage	Total	Tubing	Casing	
Pump Tail Cement	04/23/2011 19:01		8	60.1			280.0	160 SKS AT 12.8 PPG, 2.11/FT3/SK, 11.75 GAL/SK
Shutdown	04/23/2011 19:10							
Drop Top Plug	04/23/2011 19:12							PLUG LAUNCHED
Pump Displacement	04/23/2011 19:13		10	85.4			630.0	FRESH WATER
Slow Rate	04/23/2011 19:25		2	10			293.0	SLOW RATE 10 BBLs PRIOR TO CALCULATED DISPLACEMENT
Bump Plug	04/23/2011 19:29		2		95.4		670.0	PLUG BUMPED
Check Floats	04/23/2011 19:30							FLOATS HOLDING
End Job	04/23/2011 19:31							PIPE WAS STATIC DURING JOB. GOOD CIRCULATION THROUGHOUT JOB. HES RETURNED 27 BBLs OF CEMENT TO SURFACE
Pre-Rig Down Safety Meeting	04/23/2011 19:35							WITH ALL HES PERSONNEL
Rig-Down Equipment	04/23/2011 19:45							
Pre-Convoy Safety Meeting	04/23/2011 21:40							WITH ALL HES PERSONNEL
Crew Leave Location	04/23/2011 21:45							
Comment	04/23/2011 21:46							THANK YOU FOR USING HALLIBURTON CEMENT DEPARTMENT. JEREMY YOUNG AND CREW.

X _____

WILLIAMS

GM 441-34, 9 5/8 SURFACE



1	START JOB	18:36:59	2	FILL LINES	18:37:26	3	TEST LINES	18:38:41
4	PUMP H2O SPACER	18:42:06	5	PUMP LEAD CEMENT	18:50:15	6	PUMP TAIL CEMENT	19:01:30
7	SHUTDOWN	19:10:33	8	DROP TOP PLUG	19:12:30	9	PUMP DISPLACEMENT	19:13:51
10	SLOW RATE	19:25:17	11	BUMP PLUG	19:29:29	12	CHECK FLOATS	19:30:59
13	END JOB	19:31:32						

Customer: WILLIAMS
 Well Description: GM 441-34
 Customer Rep: RON TOWERS

Job Date: 23-Apr-2011
 Job Type: SURFACE
 Service Supervisor: JEREMY YOUNG

Sales Order #: 8072048
 ADC Used: YES
 Pump #/Operator: 5/JESSE SLAUGHTER