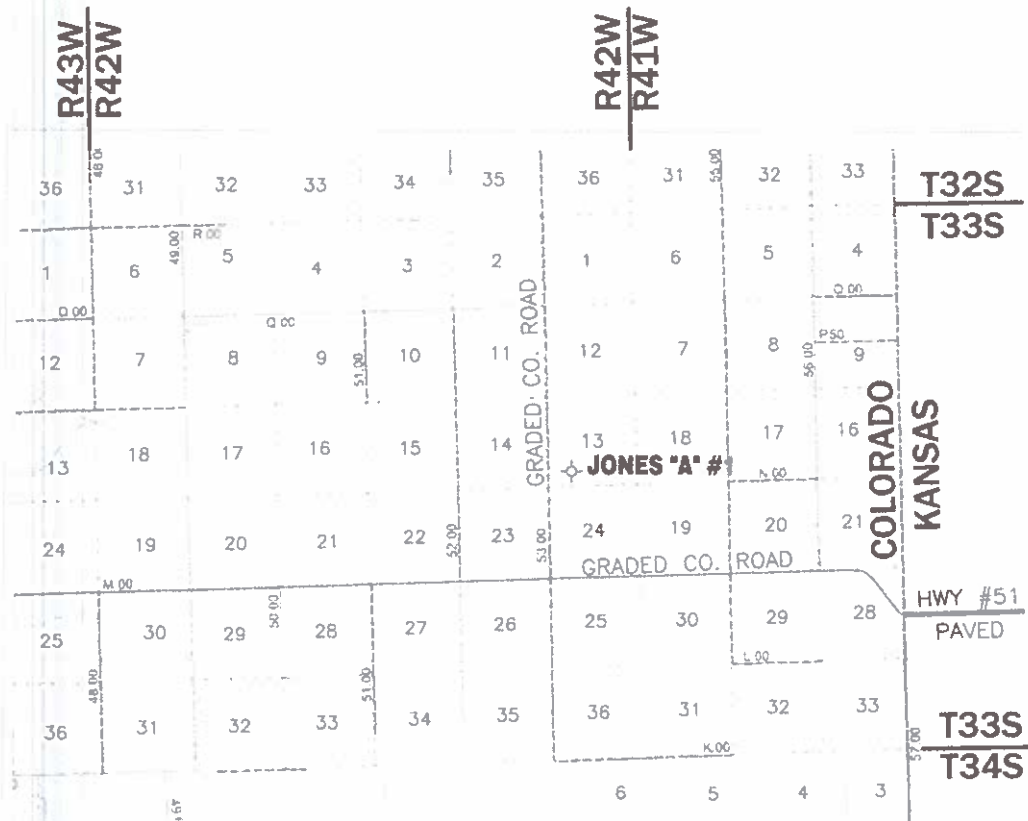


T33S-R42W



BEGINNING AT THE INTERSECTION COLORADO, KANSAS STATE LINE & KANSAS HWY #51.
NORTHWEST ON GRADED COUNTY ROAD "M", 0.5 MILES.
WEST ON GRADED COUNTY ROAD "M", 3.5 MILES.
NORTH ON GRADED COUNTY ROAD #53, 1.1 MILES.
EAST 1415 FEET INTO JONES "A" #1.

NOTE: CONTRACTOR TO CONTACT UTILITY NOTIFICATION OF COLORADO @
 1-800-922-1987 PRIOR TO ANY EXCAVATION OR CONSTRUCTION.



1117 N. HIGHWAY 27
 P.O. DRAWER 330
 ELKHART, KANSAS 67950
 (620)697-2500

**DRIVING DIRECTIONS TO THE WELL LOCATION OF THE
 JONES "A" #1 LOCATED IN THE SE/4, SW/4 SEC. 13,
 T33S-R42W, 6TH P.M., BACA COUNTY, COLORADO**

DRAWN BY: DRF CHECKED BY: TVH APPROVED BY: AUTHORIZED BY: J. PROULX

NO	DATE	REVISIONS	DATE

SCALE: 1/2" = 1 MILE DATE: 3/5/2012

WORK ORDER NO:

HARDER
 AND ASSOCIATES
 Land Surveying

P.O. BOX 518 406 MORTON
 ELKHART, KANSAS 67950
 Phone: (620) 697-2696
 Fax: (620) 697-4175

DRAWING NO OX0212C07