



COMPANY SG INTERESTS I. LTD WELL VOLK 12-89-21 #1 FIELD COAL BASIN EXT CNTY GUNNISON STATE CO									
COMPANY SG INTERESTS I. LTD WELL VOLK 12-89-21 # 1 FIELD COAL BASIN EXT COUNTY GUNNISON STATE COLORADO									
LOCATION: SHL:2438' FWL & 1491'FNL BHL:2441' FWL & 1991'FNL SEC 21 TWP 12S RGE89W									
OTHER SERVICES:									
PERM. DATUM GROUND LEVEL ELEV. 22.00 LOG MEASURED FROM K.B 22 FT. ABOVE PERMANENT DATUM DRILLING MEASURED FROM KELLY BUSHING ELEV.:K.B. 7360.00 D.F. 7359.0 G.L. 7338.00									
DATE	08-JAN-2011								
RUN NO.	ONE								
DEPTH DRILLER	3330'								
DEPTH LOGGER	2750'								
BTM. LOG INTERVAL	2750'								
TOP LOG INTERVAL	2000'								
OPEN HOLE SIZE	7.875"								
TYPE FLUID	WATER								
DENS.	8.3								
MAX. REC. TEMP.	N/A								
EST. CEMENT TOP	SEE LOG								
TIME WELL READY	ROA								
TIME LOGGER ON BTM.	12:30								
EQUIP. NO.	14068								
LOCATION	G. JUNCTION								
RECORDED BY	I. GRANADINO								
WITNESSED BY	ERNEST CASAS								
BOREHOLE RECORD									
RUN NO.	BIT	FROM	TO	SIZE	WGT.	FROM	TO		
CASING RECORD									
	SIZE	WT/FT	GRADE	TYPE JOINT	TOP	BOTTOM			
	SURFACE STRING								
	PROD. STRING								
	PROD. STRING	5.5	17#		SURF	3330?			
	LINER								

All interpretations of log data are opinions based on inferences from electrical or other measurements. We do not guarantee the accuracy or correctness of any interpretation or recommendation and we shall not be liable or responsible for any loss, cost, damages or expenses incurred or sustained by anyone resulting from any interpretation or recommendation made by any of our employees or agents.

REMARKS		Rig: MESA 202		Service Order # 176808	
LOG WAS CORRELATED TO CBL LOG DATED 21-DEC-2010					
LOGGED WITH ZERO PSI					
LOGGED MAIN PASS FROM 2700'-2000'					
NO SIGNIFICANT DIFFERENCE IN AMPLITUDE MEASUREMENT COMPARED TO PREVIOUS LOG.					
Prints: 2					
THANK YOU FOR USING WEATHERFORD WIRELINE SVCS. GRD. JUNCTION, CO. (970)263-8501					
		EQUIPMENT DATA			
Bit Size	9.625	Run No.	Tool Type	Tool No.	Other
Well Status		ONE	CENA	403	
Surface Pressure		ONE	CTBA	322	
Shut In	Flowing	ONE	GRBA	322	
ZERO	ZERO	ONE	CENB	258	
		ONE	SBTA	342	
		ONE	BOTTOM CENT.	222	

DEPTH SCALE: 5":100'

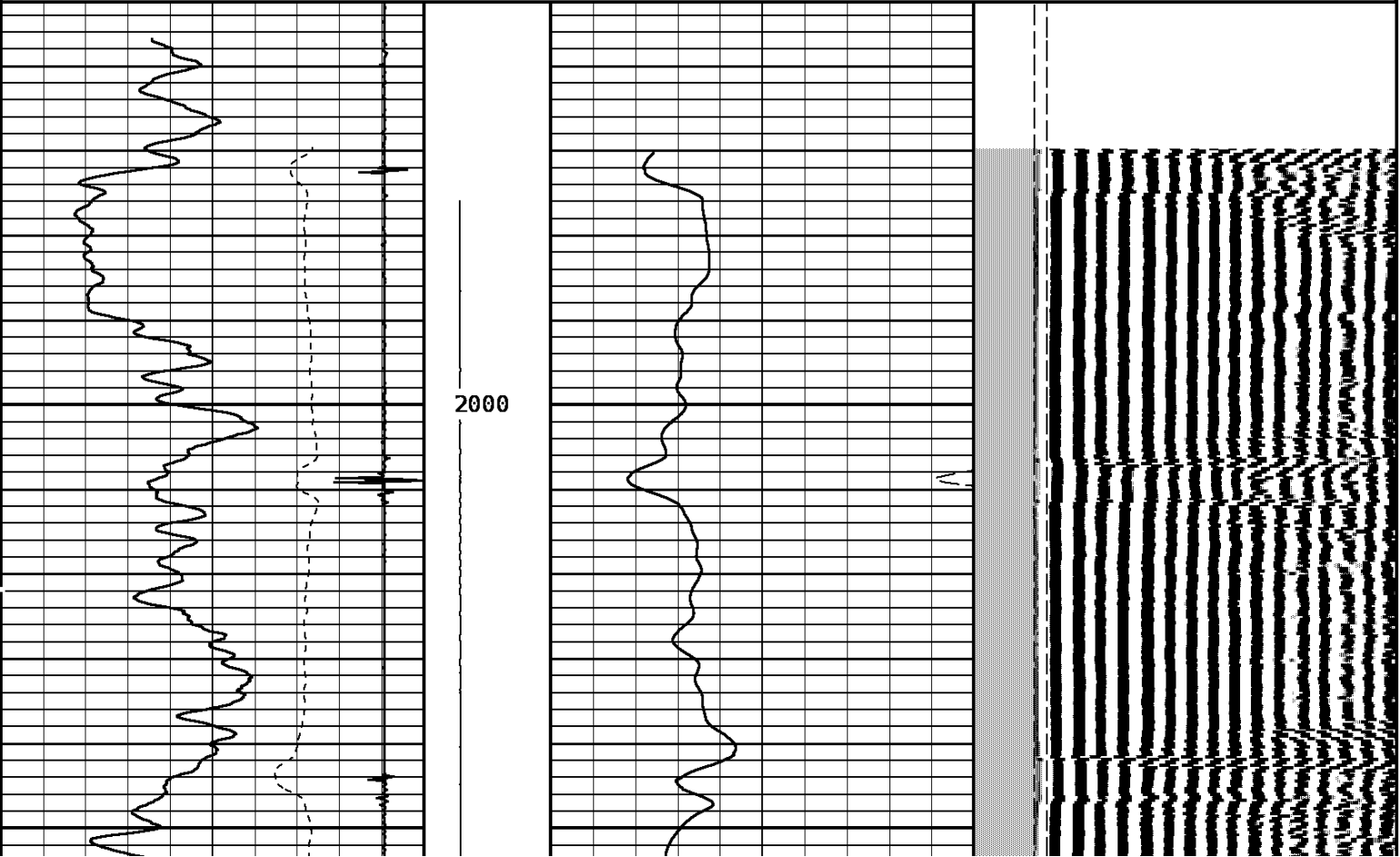
VERSION: 80214133R"

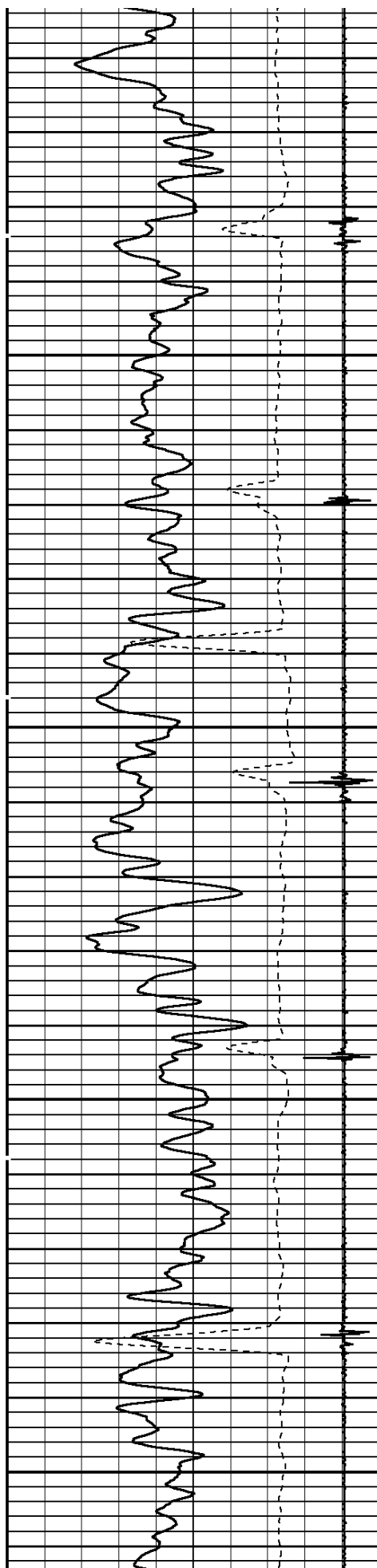
MAIN PASS

176808 CBLMP

FINISH DEPTH: 1952.6 Feet DIRECTION: UP DATE: 01/08/2011 TIME: 13:06 MODE: TRACE PLAYBACK

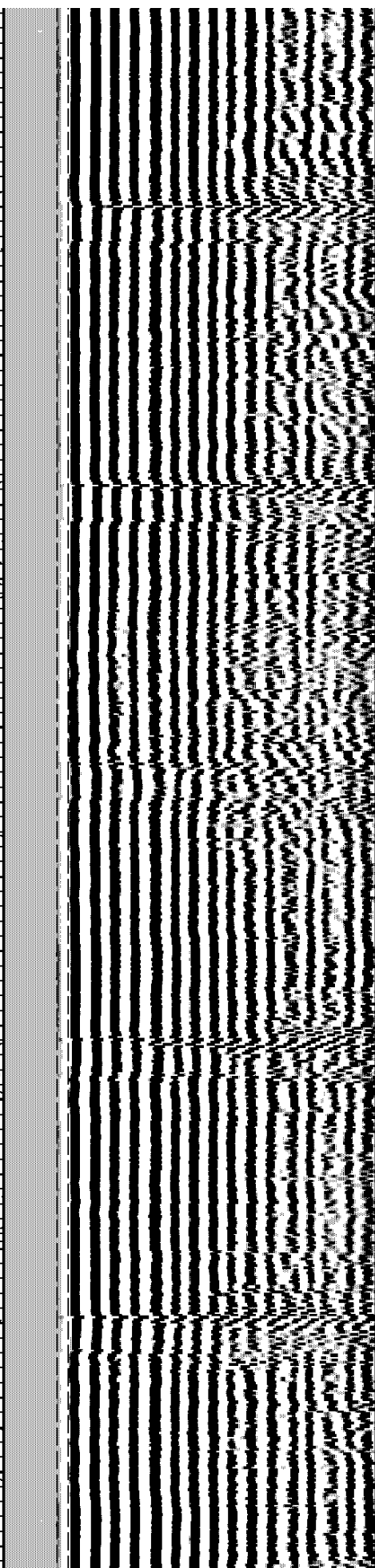
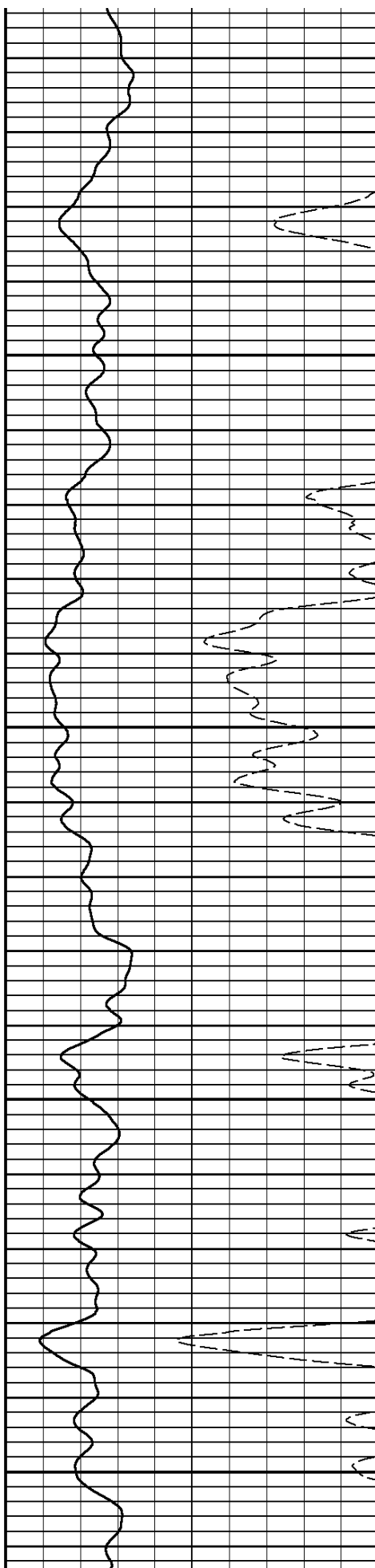
Collar Locator						FREE PIPE GATE		
-1500	Millivolts	155				200	Microseconds	1200
Gamma Ray						FREE PIPE GATE		
0	API	200	0	Millivolts	20	200	Microseconds	1200
TRAVEL TIME 3FT			Tension	AMPLITUDE 3FT		VARIABLE DENSITY 5FT		
315	Microseconds	215	0 1900	0	Millivolts 100	200	Microseconds	1200

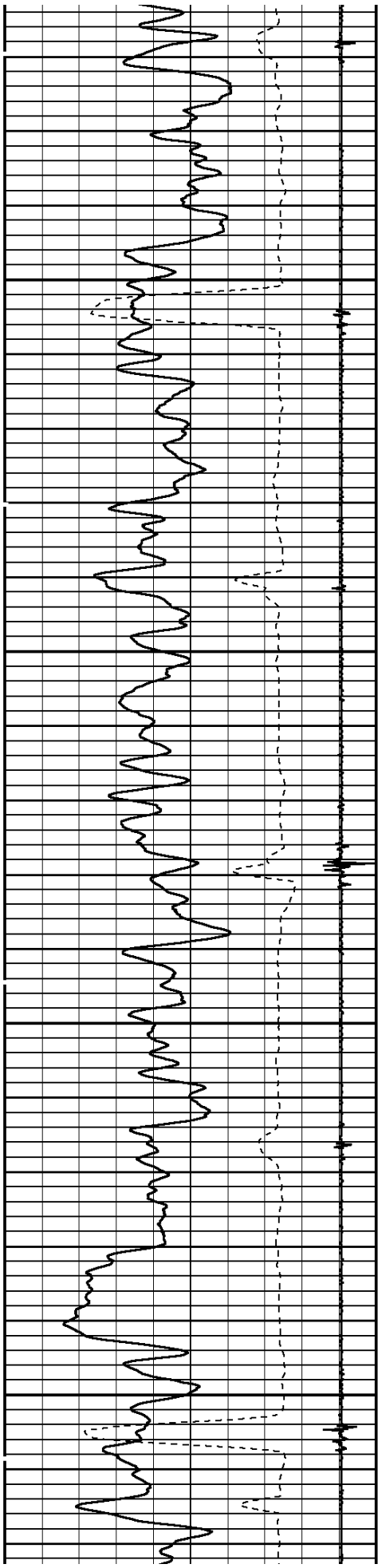




2100

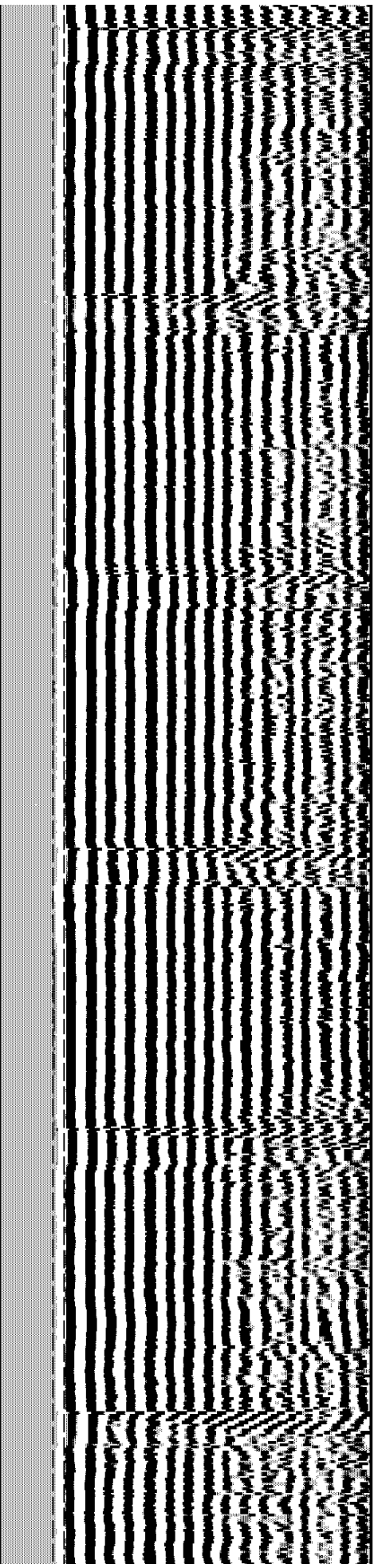
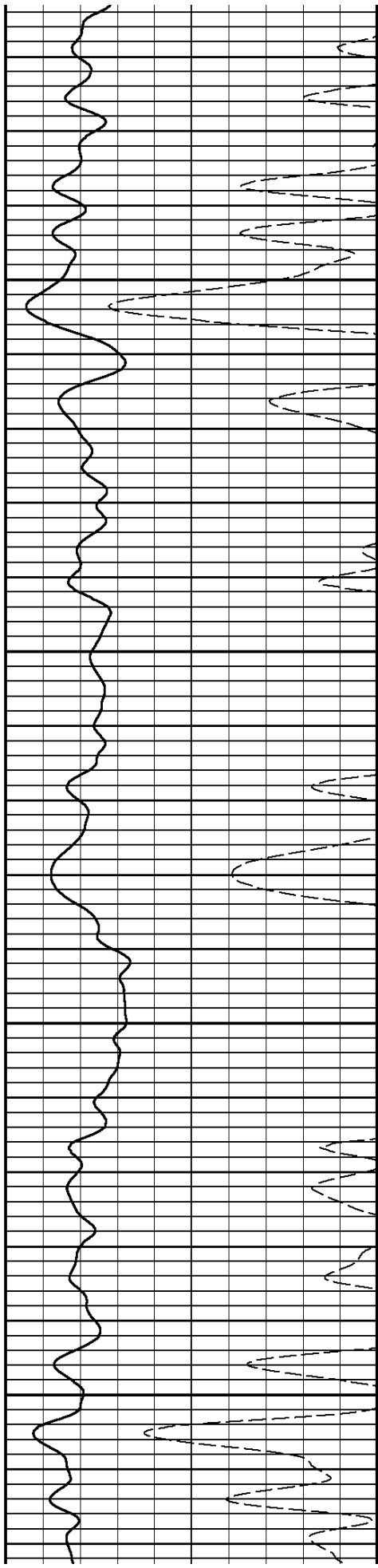
2200

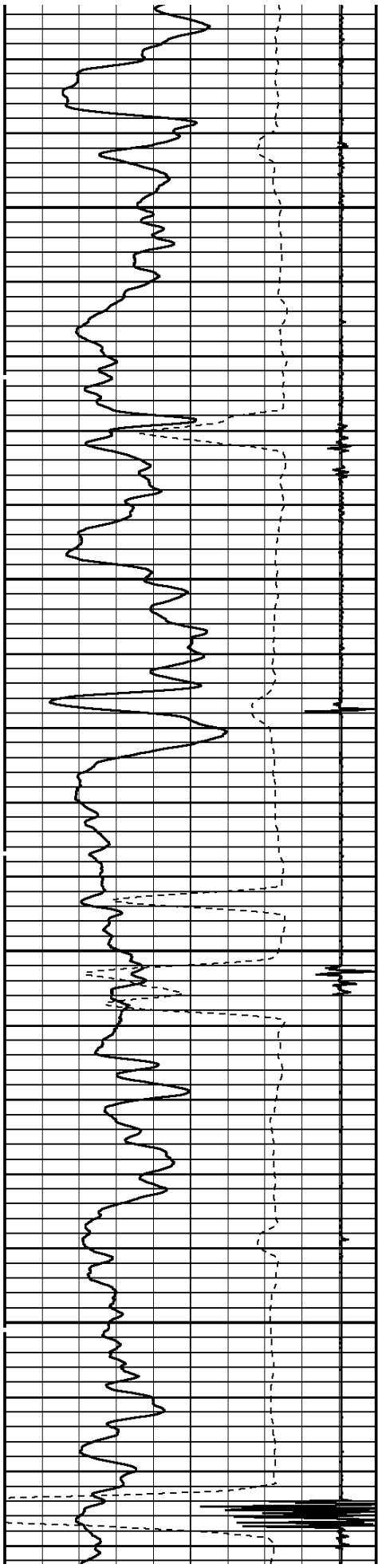




2300

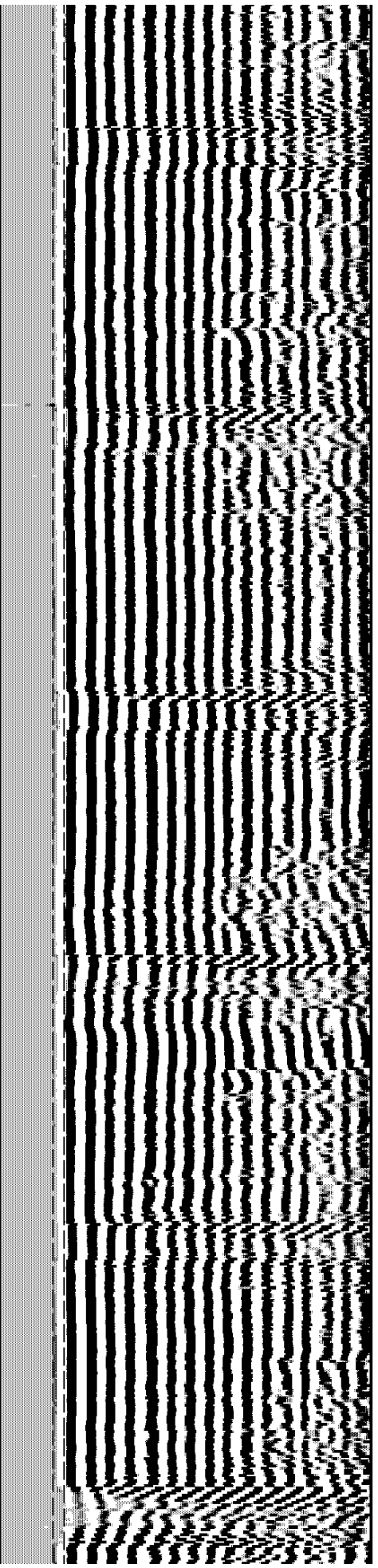
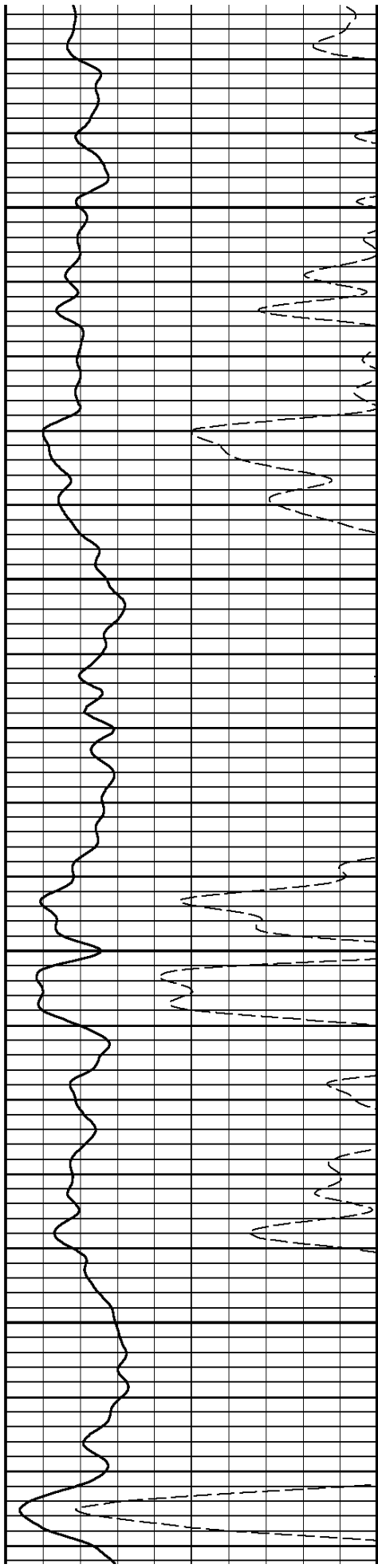
2400

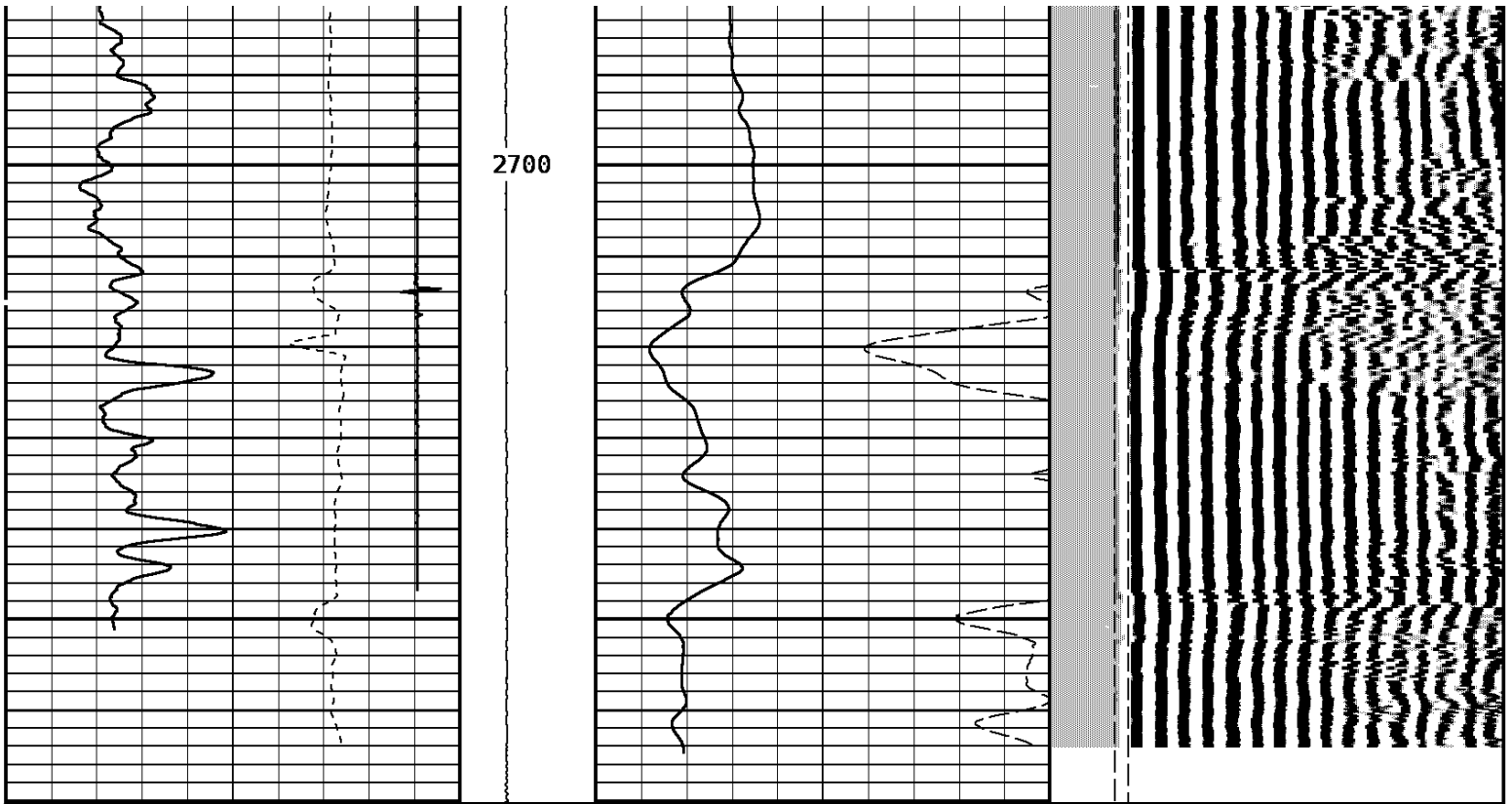




2500

2600





TRAVEL TIME 3FT			Tension		AMPLITUDE 3FT		VARIABLE DENSITY 5FT			
315	Microseconds	215			0	1900	0	200	Microseconds	1200
Gamma Ray					AMPLITUDE 3FT X5		FREE PIPE GATE			
0	API	200			0	Millivolts	20	200	Microseconds	1200
Collar Locator							FREE PIPE GATE			
-1500	Millivolts	155					200	Microseconds	1200	

START DEPTH: 2770.4 DIRECTION: UP DATE: 01/08/2011 TIME: 13:06 MODE: TRACE PLAYBACK

176808 CBLMP

MAIN PASS

DEPTH SCALE: 5":100' VERSION: 80214133R"

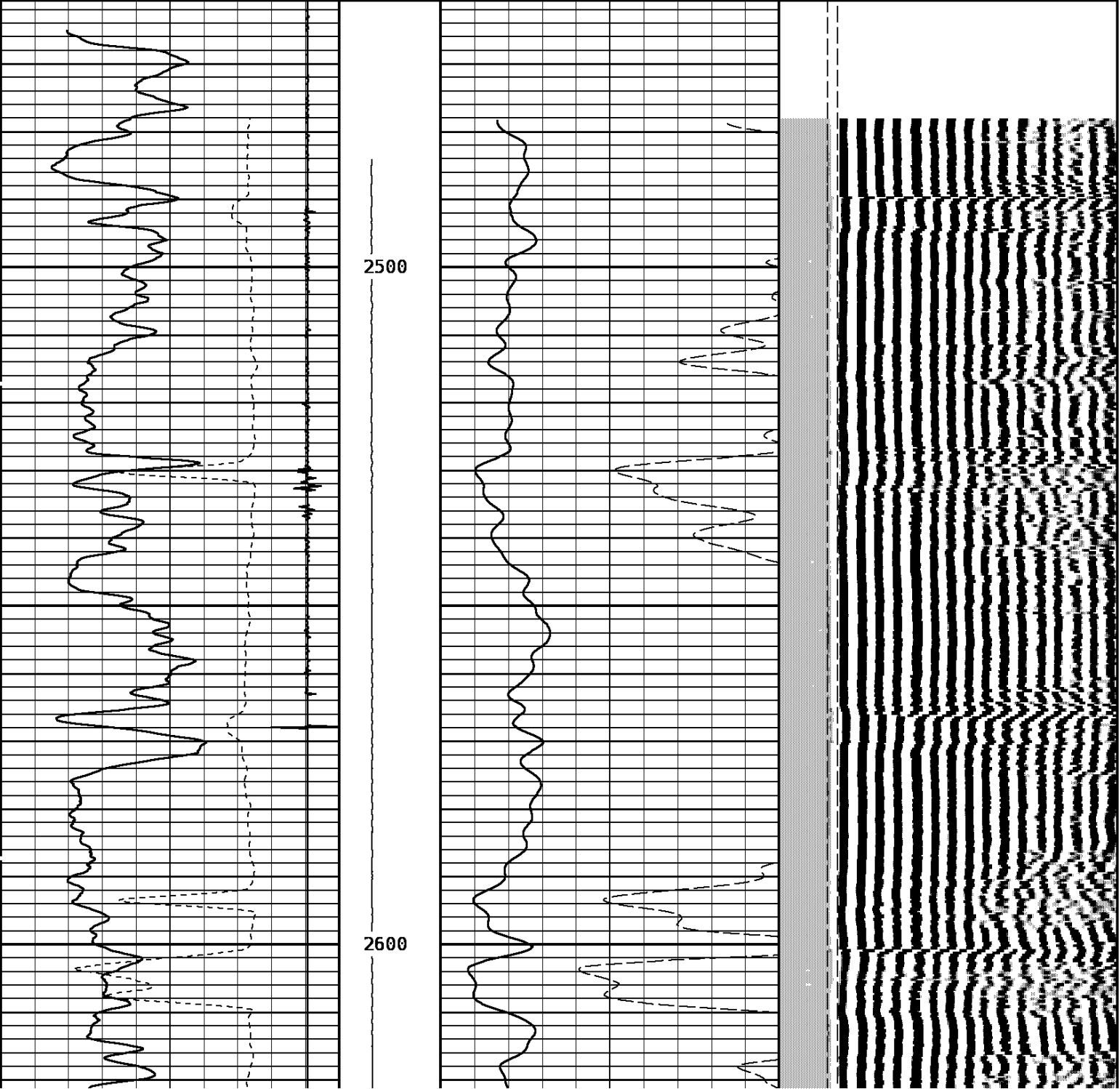
DEPTH SCALE: 5":100' VERSION: 80214133R"

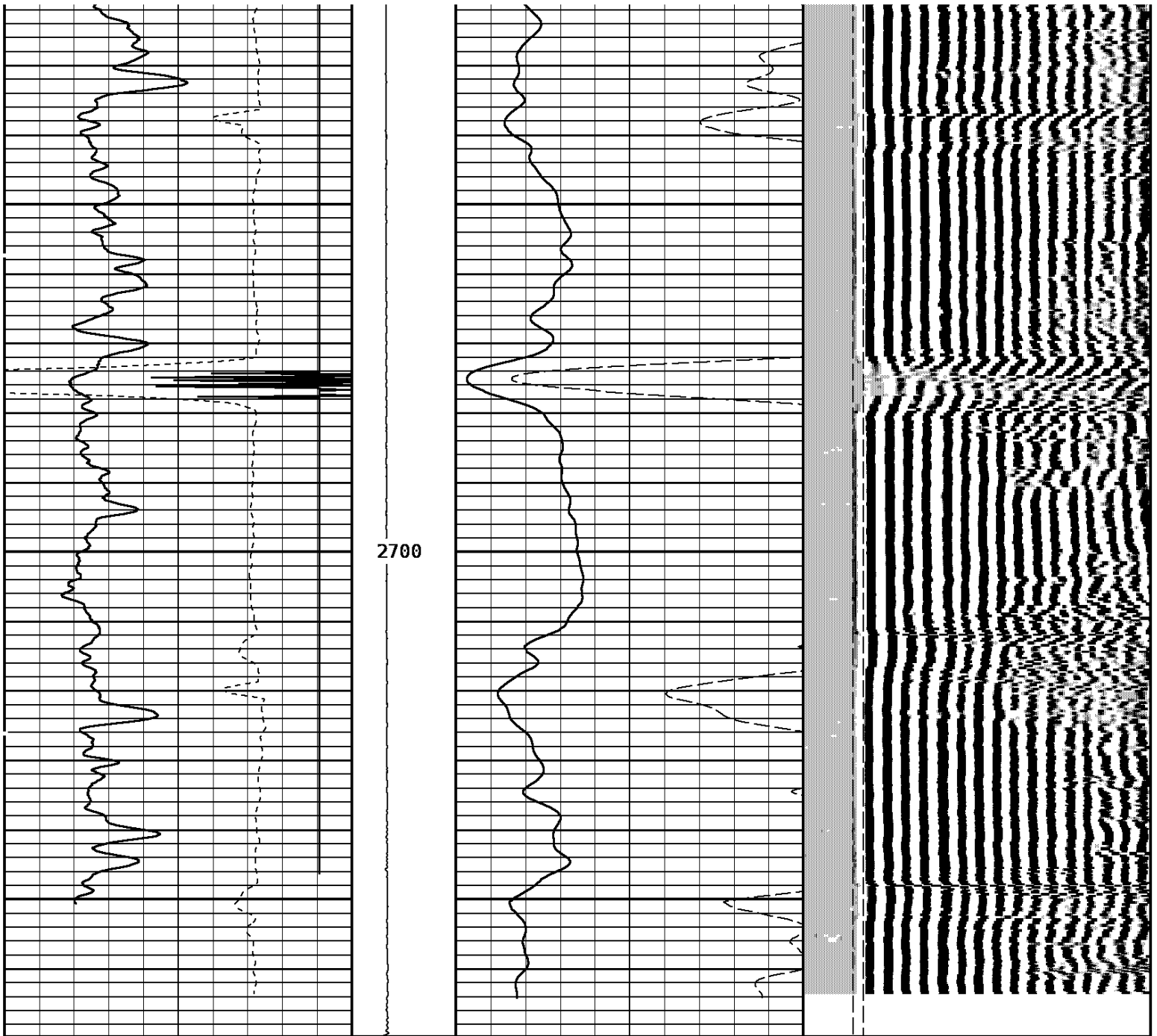
REPEAT PASS

176808 cbrp

FINISH DEPTH: **2486.3** Feet DIRECTION: **UP** DATE: **01/08/2011** TIME: **12:28** MODE: **TRACE PLAYBACK**

Collar Locator					FREE PIPE GATE					
-1500	Millivolts	155			200	Microseconds	1200			
Gamma Ray					FREE PIPE GATE					
0	API	200			0	Millivolts	20	200	Microseconds	1200
TRAVEL TIME 3FT			Tension	AMPLITUDE 3FT		VARIABLE DENSITY 5FT				
315	Microseconds	215	0	1900	0	Millivolts	100	200	Microseconds	1200





TRAVEL TIME 3FT			Tension		AMPLITUDE 3FT		VARIABLE DENSITY 5FT		
315	Microseconds	215			0	100	200	Microseconds	1200
Gamma Ray					AMPLITUDE 3FT X5		FREE PIPE GATE		
0	API	200			0	20	200	Microseconds	1200
Collar Locator							FREE PIPE GATE		
-1500	Millivolts	155					200	Microseconds	1200

START DEPTH: 2771.9 DIRECTION: UP DATE: 01/08/2011 TIME: 12:24 MODE: TRACE PLAYBACK

176808 cbrp

REPEAT PASS

DEPTH SCALE: 5":100'

VERSION: 80214133R"

01/08/11

12:10

702.1 F

Ver 80214133R

Job 176808

Sector Bond Before Calibration

Tool Type

SBT-AA

Serial No

sbtasbt

Sensor
AMP 3FT

Description
ZERO
PLUS

Standard
1.00
72.00

Measured
8.79
877.06

AMP 5FT

ZERO
PLUS

0.00
100.00

8.20
1933.03

1 SECTOR AMP

ZERO
PLUS

5.00
95.00

48.79
1930.15

2 SECTOR AMP

ZERO
PLUS

5.00
95.00

600.65
2217.92

3 SECTOR AMP

ZERO
PLUS

5.00
95.00

95.34
1737.28

4 SECTOR AMP

ZERO
PLUS

5.00
95.00

12.79
1787.80

5 SECTOR AMP

ZERO
PLUS

5.00
95.00

50.52
2042.88

6 SECTOR AMP

ZERO
PLUS

5.00
95.00

35.87
1864.65

7 SECTOR AMP

ZERO
PLUS

5.00
95.00

39.87
1868.09

8 SECTOR AMP

ZERO
PLUS

5.00
95.00

513.79
1581.37

Total Stack Weight 223.0 LBS. in air
Total Stack Length 27.83 FT.

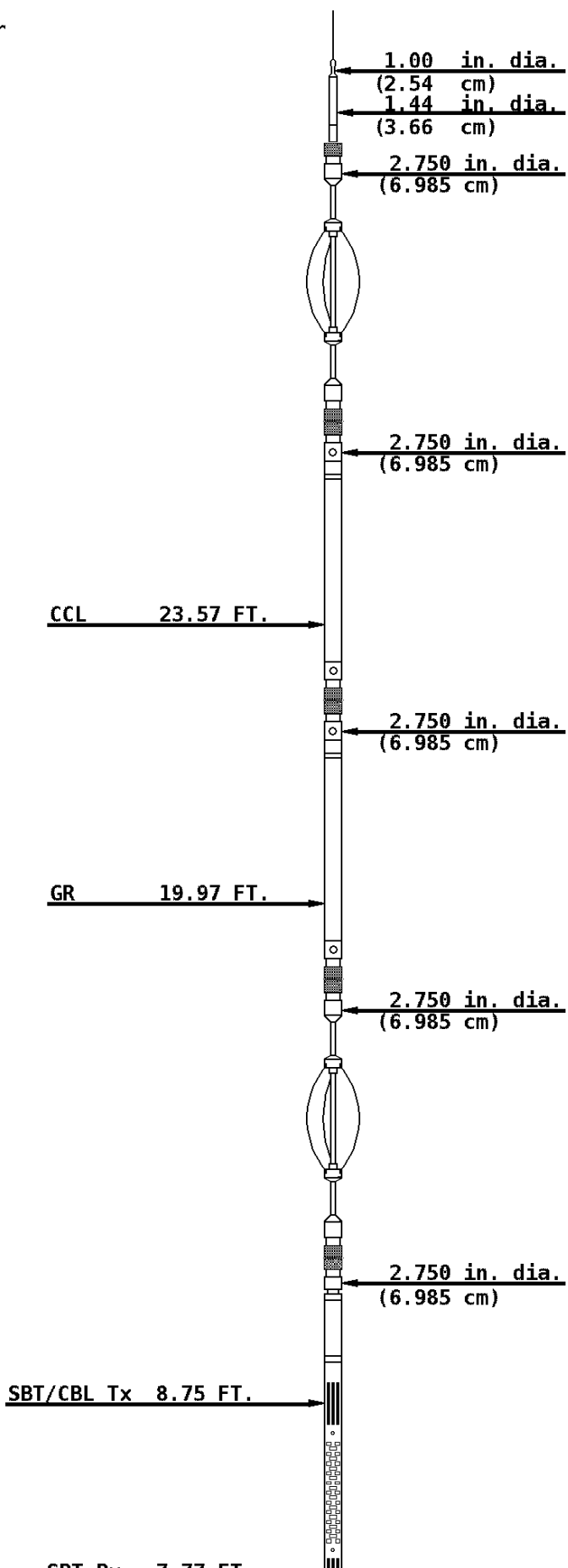
Weight	15 lbs
Length	2.49 FT.
Max. Diameter	2.750 IN.

Weight	39.8 LBS.
Length	3.40 FT.
Max. Diameter	2.75 IN.

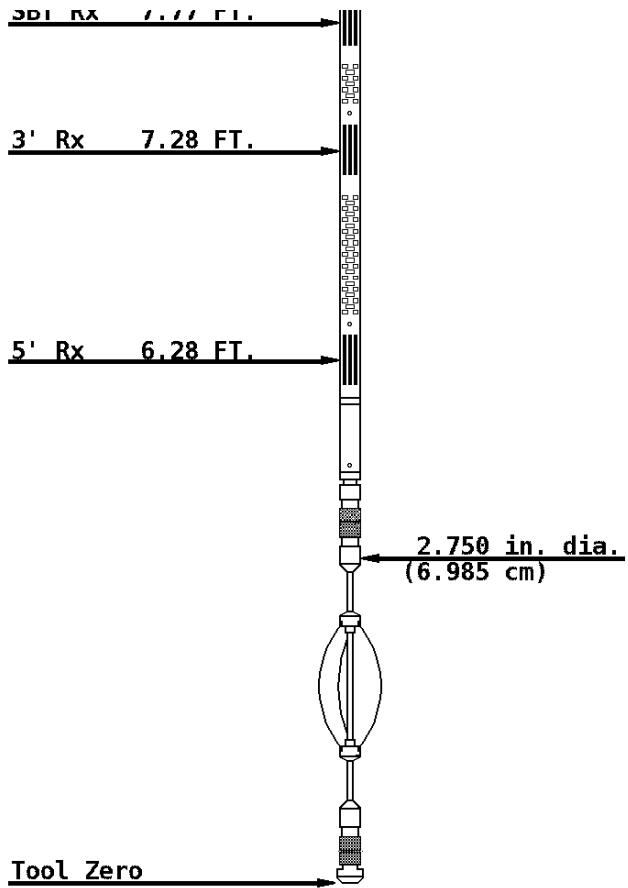
Weight	39.8 LBS.
Length	4.71 FT
Max. Diameter	2.750 IN.

Weight	22 LBS.
Length	3.08 FT.
Max. Diameter	2.750 IN.

Weight	89.2 LBS>
Length	10.32 FT.
Max. Diameter	2.750 IN.



CDT D. 7 77 ET



Slim Hole Centralizer

Weight 15.0 LBS.
Length 2.82 FT.
Max. Diameter 2.750 IN.

COMPANY SG INTERESTS I. LTD

WELL VOLK 12-89-21 # 1

FIELD COAL BASIN EXT

COUNTY GUNNISON STATE COLORADO



Weatherford®