

QUICKSILVER RESOURCES, INC.

CONSTRUCTION LAYOUT FOR

STODDARD CTB

SECTION 30, T6N, R90W, 6th P.M.

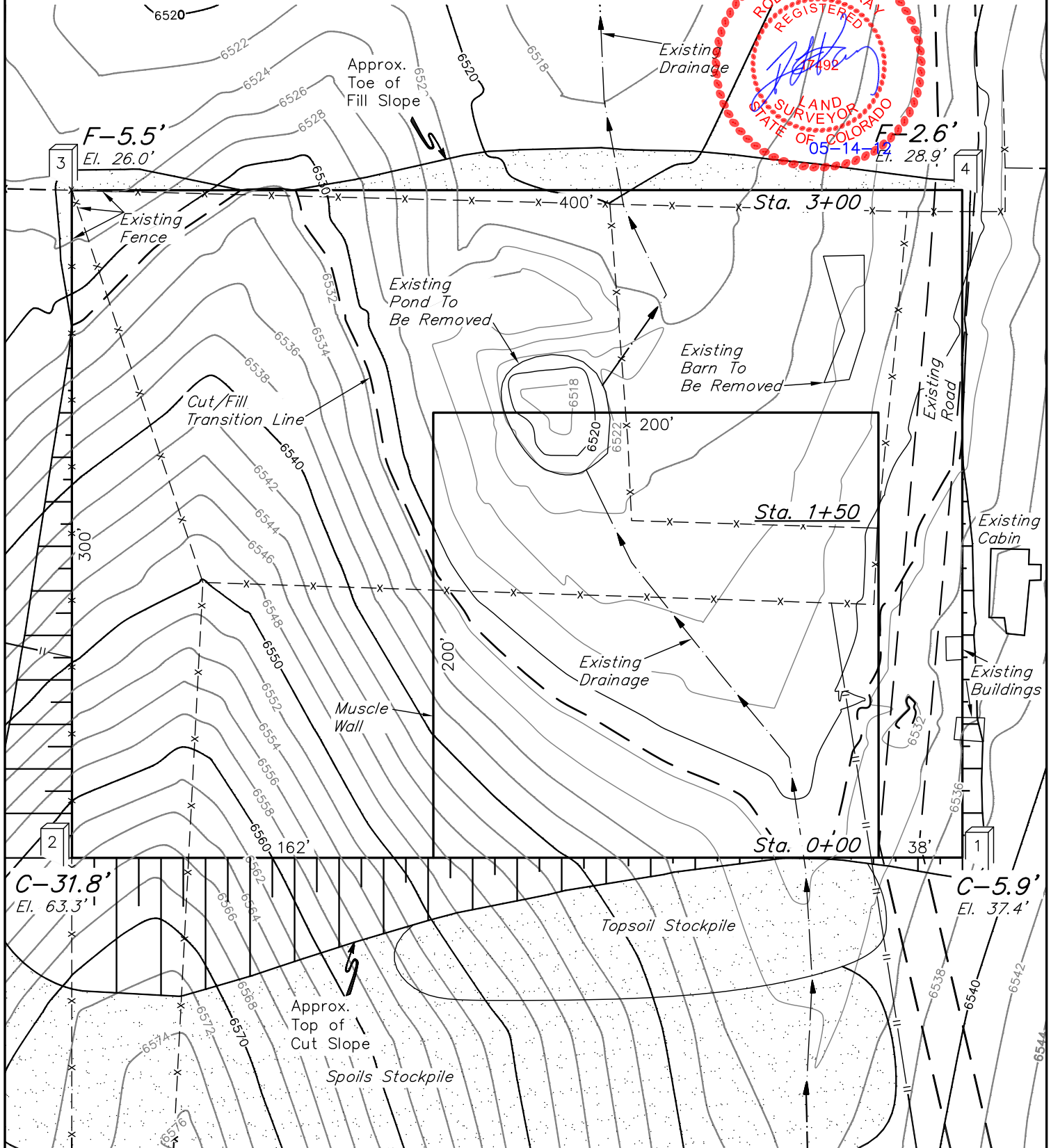
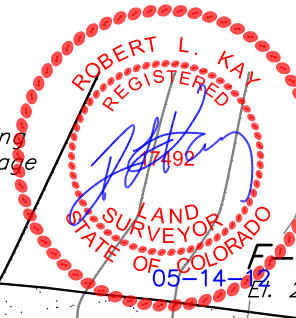
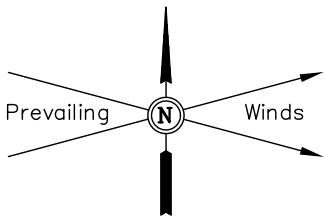
SE 1/4 NW 1/4

FIGURE #1

SCALE: 1" = 60'

DATE: 05-11-12

DRAWN BY: J.J.



FINISHED GRADE ELEV. = 6531.5'

UINTAH ENGINEERING & LAND SURVEYING

85 So. 200 East * Vernal, Utah 84078 * (435) 789-1017

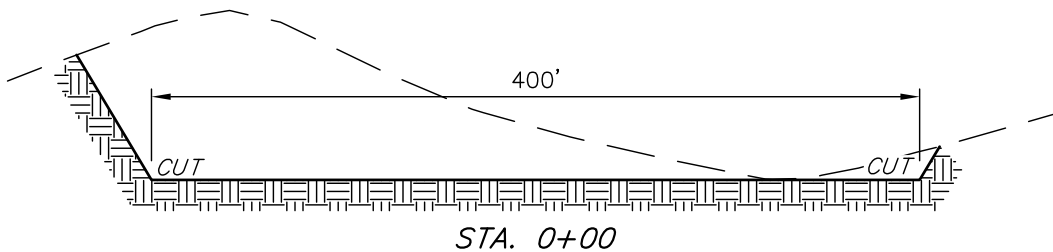
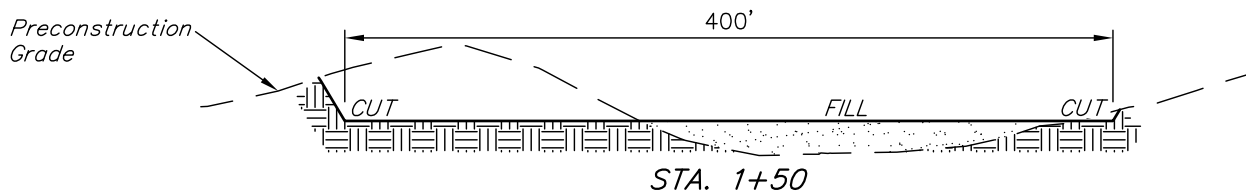
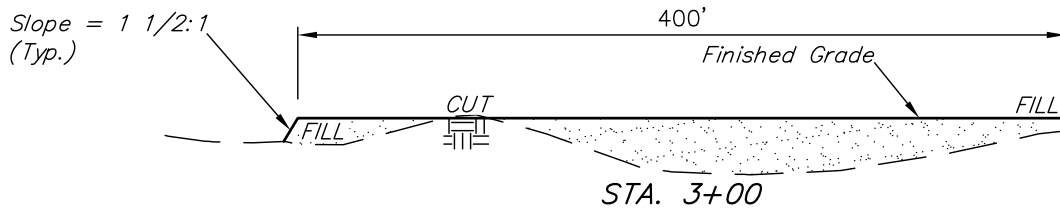
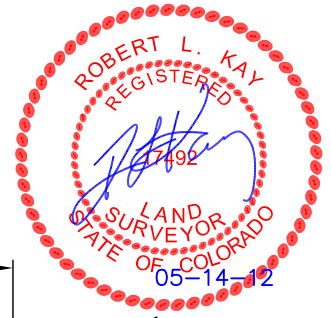
QUICKSILVER RESOURCES, INC.

CONSTRUCTION LAYOUT CROSS SECTIONS FOR STODDARD CTB SECTION 30, T6N, R90W, 6th P.M. SE 1/4 NW 1/4

FIGURE #2

1" = 40'
X-Section
Scale
1" = 100'

DATE: 05-11-12
DRAWN BY: J.J.



APPROXIMATE ACREAGES
WELL SITE DISTURBANCE = ± 4.318 ACRES

* NOTE:
FILL QUANTITY INCLUDES
5% FOR COMPACTION

APPROXIMATE YARDAGES

(6") Topsoil Stripping = 2,670 Cu. Yds.
Remaining Location = 28,670 Cu. Yds.
TOTAL CUT = 31,340 CU. YDS.
FILL = 14,920 CU. YDS.

EXCESS MATERIAL = 16,420 Cu. Yds.
Topsoil = 2,670 Cu. Yds.
EXCESS UNBALANCE = 13,750 Cu. Yds.
(After Interim Rehabilitation)

UINTAH ENGINEERING & LAND SURVEYING
85 So. 200 East * Vernal, Utah 84078 * (435) 789-1017