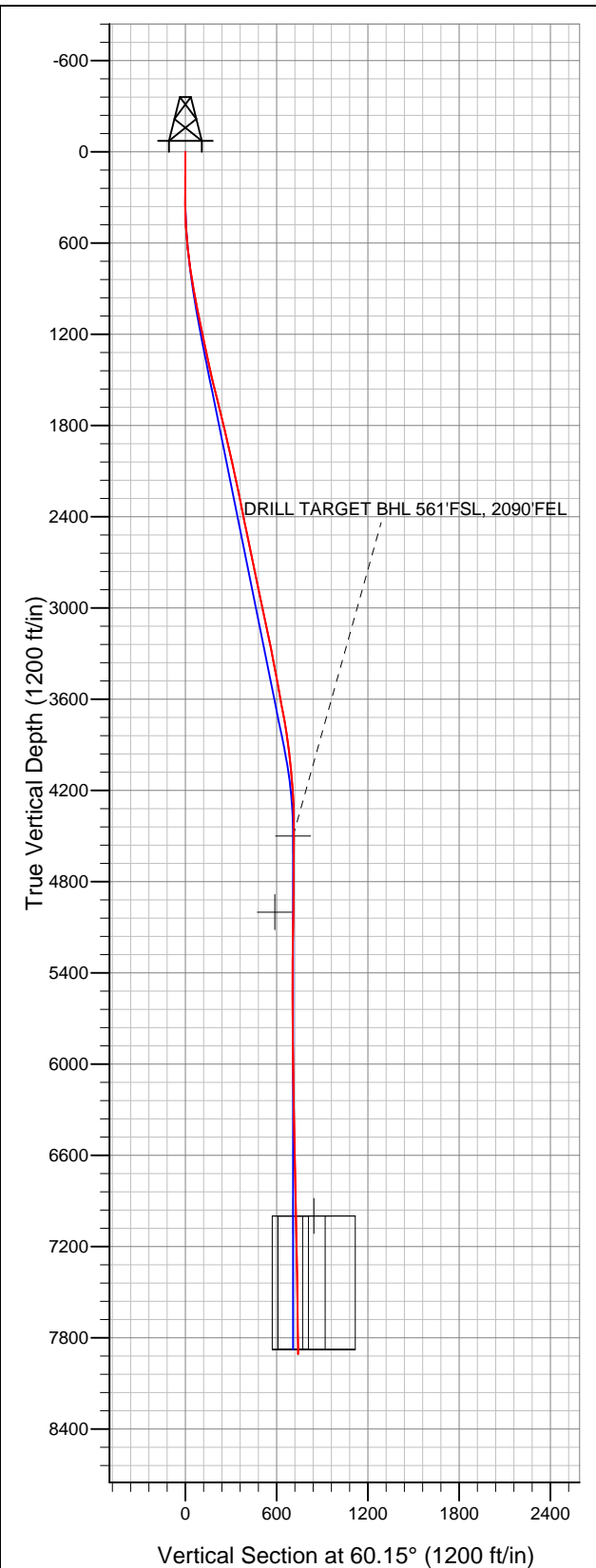


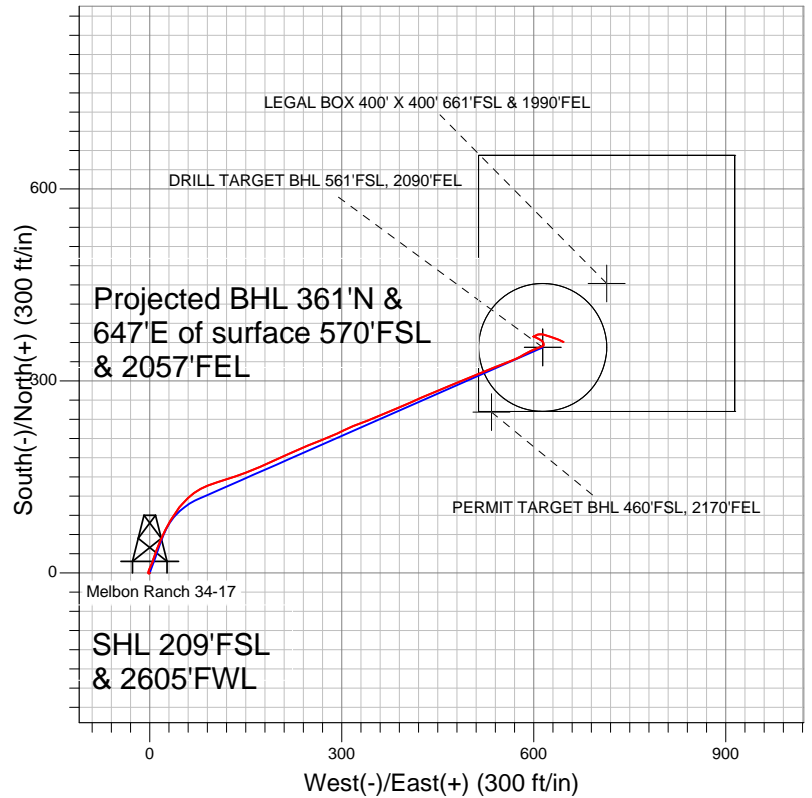
Well Name: Melbon Ranch 34-17

Surface Location: Melbon Ranch 2-8-17 Pad Sec.17-T2N-R65W
North American Datum 1983 US State Plane 1983Colorado Northern Zone
Ground Elevation: 4918.0

+N/-S 0.0	+E/-W 0.0	Northing 1291974.23	Easting 3227016.03	Latitude 40.132010	Longitude -104.688090	Slot
		Original Well Elev	WELL @ 4930.0ft (Original Well Elev)			



EnCana Oil & Gas Weld County CO



LEGEND

- Survey #1
- Melbon Ranch 34-17, Wellbore #1, Plan #1 (3-26-12) R V0
- Wellbore #1

Final Survey Plot

Projected Final Survey -
7982'MD & 7907'TVD @ 741'VS
1.00 deg Inc 111.30 deg AZ

Project: SEC.17-T2N-R65W
Site: Melbon Ranch 2-8-17 Pad Sec.17-T2N-R65W
Well: Melbon Ranch 34-17
Plan: Wellbore #1



EnCana Oil & Gas Weld County CO

SEC.17-T2N-R65W

Melbon Ranch 2-8-17 Pad Sec.17-T2N-R65W

Melbon Ranch 34-17

Wellbore #1

Survey: Survey #1

Standard Survey Report

04 April, 2012

Company:	EnCana Oil & Gas Weld County CO	Local Co-ordinate Reference:	Well Melbon Ranch 34-17
Project:	SEC.17-T2N-R65W	TVD Reference:	WELL @ 4930.0ft (Original Well Elev)
Site:	Melbon Ranch 2-8-17 Pad Sec.17-T2N-R65W	MD Reference:	WELL @ 4930.0ft (Original Well Elev)
Well:	Melbon Ranch 34-17	North Reference:	True
Wellbore:	Wellbore #1	Survey Calculation Method:	Minimum Curvature
Design:	Wellbore #1	Database:	Landmark

Project	SEC.17-T2N-R65W, Weld County, Colorado		
Map System:	US State Plane 1983	System Datum:	Mean Sea Level
Geo Datum:	North American Datum 1983		Using Well Reference Point
Map Zone:	Colorado Northern Zone		Using geodetic scale factor

Site										Melbon Ranch 2-8-17 Pad Sec.17-T2N-R65W																			
Site Position:					Northing:					1,291,973.98 ft					Latitude:					40.132010									
From:					Lat/Long					Easting:					3,226,985.28 ft					Longitude:					-104.688200				
Position Uncertainty:					0.0 ft					Slot Radius:					"					Grid Convergence:					0.52 °				

Well	Melbon Ranch 34-17				
Well Position	+N/-S	0.0 ft	Northing:	1,291,974.23 ft	Latitude: 40.132010
	+E/-W	0.0 ft	Easting:	3,227,016.03 ft	Longitude: -104.688090
Position Uncertainty	0.0 ft	Wellhead Elevation:	ft	Ground Level:	4,918.0 ft

Wellbore	Wellbore #1				
Magnetics	Model Name	Sample Date	Declination (°)	Dip Angle (°)	Field Strength (nT)
	IGRF2010	3/26/2012	8.69	66.82	52,916

Design	Wellbore #1				
Audit Notes:					
Version:	1.0	Phase:	ACTUAL	Tie On Depth:	0.0
Vertical Section:	Depth From (TVD) (ft)	+N/-S (ft)	+E/-W (ft)	Direction (°)	
	4,500.0	0.0	0.0	60.15	

Survey Program		Date	4/4/2012		
From (ft)	To (ft)	Survey (Wellbore)	Tool Name	Description	
90.0	7,982.0	Survey #1 (Wellbore #1)	MWD	MWD - Standard	

Survey									
Measured Depth (ft)	Inclination (°)	Azimuth (°)	Vertical Depth (ft)	+N/-S (ft)	+E/-W (ft)	Vertical Section (ft)	Dogleg Rate (°/100ft)	Build Rate (°/100ft)	Turn Rate (°/100ft)
0.0	0.00	0.00	0.0	0.0	0.0	0.0	0.00	0.00	0.00
90.0	0.80	210.90	90.0	-0.5	-0.3	-0.5	0.89	0.89	0.00
181.0	0.70	282.10	181.0	-1.0	-1.2	-1.5	0.96	-0.11	78.24
272.0	0.70	327.70	272.0	-0.4	-2.0	-2.0	0.60	0.00	50.11
364.0	1.70	14.10	364.0	1.4	-2.0	-1.0	1.43	1.09	50.43
456.0	3.50	20.70	455.9	5.4	-0.7	2.1	1.98	1.96	7.17
548.0	5.30	24.30	547.6	11.9	2.1	7.7	1.98	1.96	3.91
640.0	7.60	18.80	639.0	21.5	5.8	15.7	2.59	2.50	-5.98
733.0	9.50	19.80	731.0	34.5	10.4	26.2	2.05	2.04	1.08
827.0	11.40	24.40	823.4	50.3	16.8	39.6	2.21	2.02	4.89
893.0	12.10	24.50	888.0	62.5	22.4	50.5	1.06	1.06	0.15
986.0	12.10	30.90	979.0	79.8	31.4	67.0	1.44	0.00	6.88
1,080.0	12.70	34.70	1,070.8	96.7	42.4	84.9	1.08	0.64	4.04

Company:	EnCana Oil & Gas Weld County CO	Local Co-ordinate Reference:	Well Melbon Ranch 34-17
Project:	SEC.17-T2N-R65W	TVD Reference:	WELL @ 4930.0ft (Original Well Elev)
Site:	Melbon Ranch 2-8-17 Pad Sec.17-T2N-R65W	MD Reference:	WELL @ 4930.0ft (Original Well Elev)
Well:	Melbon Ranch 34-17	North Reference:	True
Wellbore:	Wellbore #1	Survey Calculation Method:	Minimum Curvature
Design:	Wellbore #1	Database:	Landmark

Survey										
Measured Depth (ft)	Inclination (°)	Azimuth (°)	Vertical Depth (ft)	+N/-S (ft)	+E/-W (ft)	Vertical Section (ft)	Dogleg Rate (°/100ft)	Build Rate (°/100ft)	Turn Rate (°/100ft)	
1,173.0	13.10	44.20	1,161.4	112.7	55.5	104.3	2.32	0.43	10.22	
1,267.0	12.00	55.00	1,253.2	125.9	71.0	124.2	2.75	-1.17	11.49	
1,361.0	11.60	67.20	1,345.2	135.2	87.7	143.4	2.68	-0.43	12.98	
1,454.0	12.60	72.30	1,436.2	141.9	106.0	162.6	1.57	1.08	5.48	
1,548.0	14.40	72.50	1,527.6	148.5	126.9	184.0	1.92	1.91	0.21	
1,642.0	14.00	66.90	1,618.7	156.5	148.5	206.7	1.52	-0.43	-5.96	
1,735.0	14.20	69.70	1,708.9	164.9	169.6	229.1	0.76	0.22	3.01	
1,829.0	13.40	64.50	1,800.2	173.6	190.2	251.4	1.57	-0.85	-5.53	
1,923.0	13.00	65.50	1,891.7	182.6	209.7	272.7	0.49	-0.43	1.06	
2,016.0	12.50	65.80	1,982.4	191.1	228.3	293.2	0.54	-0.54	0.32	
2,110.0	13.00	68.40	2,074.1	199.2	247.5	313.8	0.81	0.53	2.77	
2,204.0	12.00	67.70	2,165.9	206.8	266.3	333.9	1.08	-1.06	-0.74	
2,297.0	12.10	67.90	2,256.8	214.1	284.3	353.2	0.12	0.11	0.22	
2,391.0	11.30	63.00	2,348.9	222.0	301.6	372.1	1.36	-0.85	-5.21	
2,485.0	11.00	68.30	2,441.1	229.5	318.2	390.2	1.14	-0.32	5.64	
2,578.0	12.20	69.30	2,532.2	236.3	335.6	408.7	1.31	1.29	1.08	
2,672.0	11.70	67.90	2,624.1	243.3	353.7	427.9	0.61	-0.53	-1.49	
2,766.0	11.50	66.40	2,716.2	250.7	371.2	446.7	0.38	-0.21	-1.60	
2,859.0	11.60	67.20	2,807.3	258.0	388.3	465.2	0.20	0.11	0.86	
2,953.0	12.80	65.80	2,899.2	266.0	406.5	484.9	1.31	1.28	-1.49	
3,047.0	12.10	66.30	2,991.0	274.2	425.0	505.1	0.75	-0.74	0.53	
3,140.0	12.10	67.50	3,081.9	281.8	442.9	524.4	0.27	0.00	1.29	
3,234.0	11.80	68.00	3,173.9	289.2	460.9	543.7	0.34	-0.32	0.53	
3,328.0	11.00	66.70	3,266.0	296.3	478.1	562.2	0.89	-0.85	-1.38	
3,421.0	11.10	68.60	3,357.3	303.1	494.6	579.8	0.41	0.11	2.04	
3,515.0	10.50	68.00	3,449.7	309.6	510.9	597.3	0.65	-0.64	-0.64	
3,609.0	10.70	65.90	3,542.1	316.4	526.8	614.4	0.46	0.21	-2.23	
3,702.0	10.70	70.30	3,633.4	322.8	542.9	631.5	0.88	0.00	4.73	
3,796.0	10.50	68.30	3,725.8	328.9	559.0	648.6	0.45	-0.21	-2.13	
3,890.0	8.70	63.90	3,818.5	335.2	573.4	664.2	2.07	-1.91	-4.68	
3,983.0	6.90	60.60	3,910.7	341.1	584.6	676.8	1.99	-1.94	-3.55	
4,077.0	5.90	66.10	4,004.1	345.8	593.9	687.2	1.25	-1.06	5.85	
4,171.0	5.80	65.10	4,097.6	349.8	602.6	696.8	0.15	-0.11	-1.06	
4,264.0	4.40	72.30	4,190.2	352.8	610.3	704.9	1.65	-1.51	7.74	
4,358.0	1.50	53.00	4,284.1	354.7	614.7	709.7	3.22	-3.09	-20.53	
4,452.0	1.00	354.50	4,378.1	356.2	615.6	711.2	1.38	-0.53	-62.23	
4,545.0	1.00	356.20	4,471.0	357.8	615.5	711.9	0.03	0.00	1.83	
4,573.9	0.90	353.58	4,499.9	358.3	615.4	712.1	0.36	-0.33	-9.08	
DRILL TARGET BHL 561'FSL, 2090'FEL										
4,639.0	0.70	345.10	4,565.0	359.2	615.3	712.4	0.36	-0.31	-13.02	
4,733.0	0.90	329.70	4,659.0	360.4	614.8	712.6	0.31	0.21	-16.38	
4,826.0	0.90	325.40	4,752.0	361.6	614.0	712.5	0.07	0.00	-4.62	
4,920.0	1.50	306.70	4,846.0	363.0	612.6	712.0	0.75	0.64	-19.89	
5,014.0	1.90	296.30	4,939.9	364.4	610.2	710.6	0.54	0.43	-11.06	
5,074.3	1.70	301.05	5,000.2	365.3	608.5	709.6	0.41	-0.33	7.87	
PERMIT TARGET BHL 460'FSL, 2170'FEL										
5,107.0	1.60	304.10	5,032.9	365.8	607.7	709.2	0.41	-0.31	9.34	
5,201.0	2.00	296.50	5,126.9	367.3	605.2	707.7	0.49	0.43	-8.09	
5,295.0	2.10	295.90	5,220.8	368.8	602.2	705.8	0.11	0.11	-0.64	
5,388.0	0.50	258.70	5,313.8	369.4	600.2	704.5	1.86	-1.72	-40.00	
5,482.0	0.10	240.40	5,407.8	369.3	599.7	704.0	0.43	-0.43	-19.47	
5,575.0	0.10	128.90	5,500.8	369.2	599.7	703.9	0.18	0.00	-119.89	
5,669.0	0.20	66.70	5,594.8	369.2	600.0	704.1	0.19	0.11	-66.17	
5,763.0	0.30	89.30	5,688.8	369.3	600.4	704.5	0.15	0.11	24.04	

Company:	EnCana Oil & Gas Weld County CO	Local Co-ordinate Reference:	Well Melbon Ranch 34-17
Project:	SEC.17-T2N-R65W	TVD Reference:	WELL @ 4930.0ft (Original Well Elev)
Site:	Melbon Ranch 2-8-17 Pad Sec.17-T2N-R65W	MD Reference:	WELL @ 4930.0ft (Original Well Elev)
Well:	Melbon Ranch 34-17	North Reference:	True
Wellbore:	Wellbore #1	Survey Calculation Method:	Minimum Curvature
Design:	Wellbore #1	Database:	Landmark

Survey										
Measured Depth (ft)	Inclination (°)	Azimuth (°)	Vertical Depth (ft)	+N/-S (ft)	+E/-W (ft)	Vertical Section (ft)	Dogleg Rate (°/100ft)	Build Rate (°/100ft)	Turn Rate (°/100ft)	
5,856.0	0.30	106.50	5,781.8	369.2	600.8	704.9	0.10	0.00	18.49	
5,950.0	0.20	30.00	5,875.8	369.3	601.1	705.2	0.34	-0.11	-81.38	
6,044.0	1.10	47.90	5,969.8	370.1	601.9	706.2	0.97	0.96	19.04	
6,137.0	1.30	56.10	6,062.7	371.2	603.4	708.2	0.28	0.22	8.82	
6,231.0	1.20	71.50	6,156.7	372.2	605.3	710.2	0.37	-0.11	16.38	
6,325.0	1.20	77.00	6,250.7	372.7	607.1	712.1	0.12	0.00	5.85	
6,418.0	1.20	85.70	6,343.7	373.0	609.1	713.9	0.20	0.00	9.35	
6,513.0	1.40	91.90	6,438.7	373.0	611.2	715.8	0.26	0.21	6.53	
6,607.0	1.40	97.20	6,532.6	372.8	613.5	717.7	0.14	0.00	5.64	
6,701.0	1.40	107.10	6,626.6	372.4	615.7	719.4	0.26	0.00	10.53	
6,796.0	1.50	108.00	6,721.6	371.6	618.0	721.0	0.11	0.11	0.95	
6,890.0	1.60	106.40	6,815.5	370.9	620.5	722.7	0.12	0.11	-1.70	
6,984.0	1.60	110.30	6,909.5	370.0	623.0	724.5	0.12	0.00	4.15	
7,072.4	1.79	106.04	6,997.8	369.2	625.4	726.2	0.26	0.21	-4.82	
TARGET CIRCLE 561'FSL & 2090'FEL										
7,074.3	1.79	105.96	6,999.7	369.2	625.5	726.3	0.26	0.22	-4.30	
LEGAL BOX 400' X 400' 661'FSL & 1990'FEL										
7,078.0	1.80	105.80	7,003.5	369.2	625.6	726.4	0.26	0.22	-4.27	
7,173.0	1.80	106.90	7,098.4	368.4	628.5	728.4	0.04	0.00	1.16	
7,267.0	1.90	108.80	7,192.4	367.4	631.4	730.5	0.12	0.11	2.02	
7,361.0	2.00	112.40	7,286.3	366.3	634.3	732.5	0.17	0.11	3.83	
7,456.0	1.80	111.00	7,381.3	365.1	637.3	734.5	0.22	-0.21	-1.47	
7,550.0	1.40	115.10	7,475.2	364.1	639.7	736.1	0.44	-0.43	4.36	
7,644.0	1.10	113.00	7,569.2	363.3	641.6	737.3	0.32	-0.32	-2.23	
7,739.0	0.70	119.50	7,664.2	362.6	642.9	738.1	0.43	-0.42	6.84	
7,833.0	1.00	110.90	7,758.2	362.1	644.2	738.9	0.35	0.32	-9.15	
7,937.0	1.00	111.30	7,862.2	361.4	645.9	740.1	0.01	0.00	0.38	
7,982.0	1.00	111.30	7,907.1	361.1	646.6	740.6	0.00	0.00	0.00	

Checked By: _____	Approved By: _____	Date: _____
-------------------	--------------------	-------------