

---

**WPX ENERGY ROCKY MOUNTAIN LLC-EBUS**

---

**PA 13-6  
GRAND VALLEY  
Garfield County , Colorado**

**Recement Service  
03-Mar-2012**

**Post Job Summary**

*The Road to Excellence Starts with Safety*

<b>Sold To #:</b> 300721	<b>Ship To #:</b> 300721	<b>Quote #:</b>	<b>Sales Order #:</b> 9332510
<b>Customer:</b> WPX ENERGY ROCKY MOUNTAIN LLC-EBUS		<b>Customer Rep:</b> Dunnik, Brian	
<b>Well Name:</b> PA		<b>Well #:</b> 13-6	<b>API/UWI #:</b> 05-045-11968
<b>Field:</b> GRAND VALLEY	<b>City (SAP):</b> PARACHUTE	<b>County/Parish:</b> Garfield	<b>State:</b> Colorado
<b>Lat:</b> N 39.464 deg. OR N 39 deg. 27 min. 50.558 secs.		<b>Long:</b> W 108.051 deg. OR W -109 deg. 56 min. 58.07 secs.	
<b>Contractor:</b> WORKOVER		<b>Rig/Platform Name/Num:</b> WORK OVER	
<b>Job Purpose:</b> Recement Service			
<b>Well Type:</b> Development Well		<b>Job Type:</b> Recement Service	
<b>Sales Person:</b> MAYO, MARK		<b>Srvc Supervisor:</b> PONDER, THOMAS	<b>MBU ID Emp #:</b> 427112

**Job Personnel**

HES Emp Name	Exp Hrs	Emp #	HES Emp Name	Exp Hrs	Emp #	HES Emp Name	Exp Hrs	Emp #
BORSZICH, STEPHEN A	5.5	412388	HARDRICK, RAYMOND Frank	5.5	391324	PONDER, THOMAS Lynn	5.5	427112
WADE, LOGAN D	5.5	488896						

**Equipment**

HES Unit #	Distance-1 way	HES Unit #	Distance-1 way	HES Unit #	Distance-1 way	HES Unit #	Distance-1 way
	60 mile	10744648C	60 mile	10867322	60 mile	10998512	60 mile
11259882	60 mile	11360881	60 mile	11808845	60 mile		

**Job Hours**

Date	On Location Hours	Operating Hours	Date	On Location Hours	Operating Hours	Date	On Location Hours	Operating Hours
03/03/2012	5.5	3						

**TOTAL** Total is the sum of each column separately

**Job**

**Job Times**

Formation Name	Formation Depth (MD)	Top	Bottom	Called Out	Date	Time	Time Zone
					03 - Mar - 2012	04:00	MST
<b>Form Type</b>			<b>BHST</b>	<b>On Location</b>	03 - Mar - 2012	08:00	MST
<b>Job depth MD</b>	2369. ft		<b>Job Depth TVD</b>	2369. ft	03 - Mar - 2012	11:07	MST
<b>Water Depth</b>			<b>Wk Ht Above Floor</b>	4. ft	03 - Mar - 2012	12:51	MST
<b>Perforation Depth (MD)</b>	<i>From</i>		<i>To</i>		<b>Departed Loc</b>	03 - Mar - 2012	14:00

**Well Data**

Description	New / Used	Max pressure psig	Size in	ID in	Weight lbm/ft	Thread	Grade	Top MD ft	Bottom MD ft	Top TVD ft	Bottom TVD ft

**Tools and Accessories**

Type	Size	Qty	Make	Depth	Type	Size	Qty	Make	Depth	Type	Size	Qty	Make
Guide Shoe					Packer					Top Plug			
Float Shoe					Bridge Plug					Bottom Plug			
Float Collar					Retainer	4 1/2	1	HES	2369	SSR plug set			
Insert Float										Plug Container			
Stage Tool										Centralizers			

**Miscellaneous Materials**

Gelling Agt	Conc	Surfactant	Conc	Acid Type	Qty	Conc	%
Treatment Fld	Conc	Inhibitor	Conc	Sand Type	Size	Qty	

**Fluid Data**

**Stage/Plug #: 1**

Fluid #	Stage Type	Fluid Name	Qty	Qty uom	Mixing Density lbm/gal	Yield ft <sup>3</sup> /sk	Mix Fluid Gal/sk	Rate bbl/min	Total Mix Fluid Gal/sk

**Stage/Plug #: 1**

Fluid #	Stage Type	Fluid Name	Qty	Qty uom	Mixing Density uom	Yield uom	Mix Fluid uom	Rate uom	Total Mix Fluid uom

Stage/Plug #: 1									
Fluid #	Stage Type	Fluid Name	Qty	Qty uom	Mixing Density lbm/gal	Yield ft <sup>3</sup> /sk	Mix Fluid Gal/sk	Rate bbl/min	Total Mix Fluid Gal/sk
1	Injection Test		10.00	bbl	.	.0	.0	2.0	
2	SqueezeCem Lead	SQUEEZECEM (TM) SYSTEM (452971)	550.0	sacks	15.8	1.15	5.0	2.7	5.0
	5 Gal	FRESH WATER							
3	SqueezeCem Tail	SQUEEZECEM (TM) SYSTEM (452971)	50.0	sacks	17.	.99	3.76	2.7	3.76
	3.76 Gal	FRESH WATER							
4	Displacement		10.00	bbl	.	.0	.0	1.0	
Calculated Values		Pressures		Volumes					
Displacement	9.2	Shut In: Instant		Lost Returns		Cement Slurry	121.4	Pad	
Top Of Cement		5 Min		Cement Returns	0	Actual Displacement	10.3	Treatment	
Frac Gradient		15 Min		Spacers	10	Load and Breakdown		Total Job	141.7
Rates									
Circulating		Mixing	2.7	Displacement	1	Avg. Job			2
Cement Left In Pipe	Amount	0 ft	Reason	Shoe Joint					
Frac Ring # 1 @	ID	Frac ring # 2 @	ID	Frac Ring # 3 @	ID	Frac Ring # 4 @	ID		
The Information Stated Herein Is Correct				Customer Representative Signature					

*The Road to Excellence Starts with Safety*

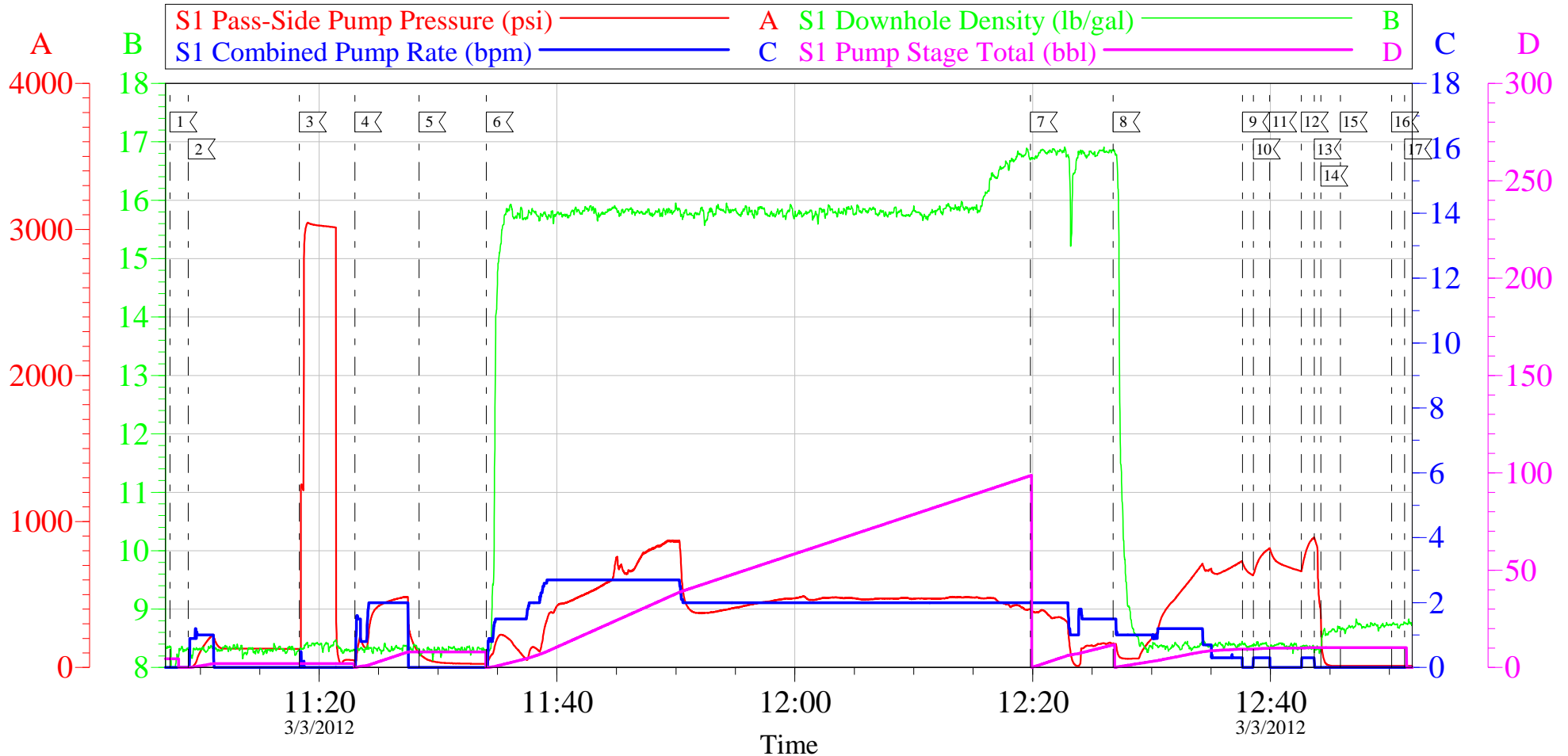
<b>Sold To #:</b> 300721	<b>Ship To #:</b> 300721	<b>Quote #:</b>	<b>Sales Order #:</b> 9332510
<b>Customer:</b> WPX ENERGY ROCKY MOUNTAIN LLC-EBUS		<b>Customer Rep:</b> Dunnik, Brian	
<b>Well Name:</b> PA		<b>Well #:</b> 13-6	<b>API/UWI #:</b> 05-045-11968
<b>Field:</b> GRAND VALLEY	<b>City (SAP):</b> PARACHUTE	<b>County/Parish:</b> Garfield	<b>State:</b> Colorado
<b>Legal Description:</b>			
<b>Lat:</b> N 39.464 deg. OR N 39 deg. 27 min. 50.558 secs.		<b>Long:</b> W 108.051 deg. OR W -109 deg. 56 min. 58.07 secs.	
<b>Contractor:</b> WORKOVER		<b>Rig/Platform Name/Num:</b> WORK OVER	
<b>Job Purpose:</b> Recement Service			<b>Ticket Amount:</b>
<b>Well Type:</b> Development Well		<b>Job Type:</b> Recement Service	
<b>Sales Person:</b> MAYO, MARK		<b>Srvc Supervisor:</b> PONDER, THOMAS	<b>MBU ID Emp #:</b> 427112

Activity Description	Date/Time	Cht #	Rate bbl/min	Volume bbl		Pressure psig		Comments
				Stage	Total	Tubing	Casing	
Call Out	03/03/2012 04:00							ALL HES PRESENT FOR PRE CONVOY SAFETY HUDDLE
Crew Leave Yard	03/03/2012 06:30							
Arrive At Loc	03/03/2012 08:00							RIG WAS JUST STARTING TO RUN TOOL AND TUBING INTO THE WELL WHEN CREW ARRIVED ON LOCATION
Assessment Of Location Safety Meeting	03/03/2012 08:15							TUBING- 2 3/8" 4.7#, CASING- 4 1/2" 14#, WELL FLUID- 8.4 PPG, TOP PERFS @ 2460', BOTTOM PERFS @ 2475', 4 1/2" RETAINER SET @ 2369'
Rig-Up Equipment	03/03/2012 08:30							
Safety Meeting	03/03/2012 10:30							ALL HES PRESENT, RIG CREW PRESENT
Start Job	03/03/2012 11:07							HELD 350 PSI ON THE BACKSIDE
Other	03/03/2012 11:09		1	2		226.0		FILL LINES
Test Lines	03/03/2012 11:18		0.1	0.1		3047.0		PRESSURE TEST GOOD
Injection Test	03/03/2012 11:23		2	10		483.0		GOOD INJECTION RATE
Other	03/03/2012 11:28							MIX FIRST TUB OF CEMENT
Pump Lead Cement	03/03/2012 11:34		2.7	112.6		872.0		550 SKS 15.8 PPG 1.15 FT3/SK 5.0 GAL/SK

Activity Description	Date/Time	Cht #	Rate bbl/min	Volume bbl		Pressure psig		Comments
				Stage	Total	Tubing	Casing	
Pump Tail Cement	03/03/2012 12:19		2.7	8.8		397.0		50 SKS 17.0 PPG 0.99 FT3/SK 3.76 GAL/SK
Pump Displacement	03/03/2012 12:26		1	9.5		739.0		CUSTOMER STARTED SLOWING RATE DOWN TO 0.3 BPM BEFORE HESITATING
Other	03/03/2012 12:37					643.0		AS PER CUSTOMER REQUEST HESITATED
Pump Displacement	03/03/2012 12:38		0.3	10		817.0		AS PER CUSTOMER REQUEST PUMPED MORE DISPLACEMENT
Other	03/03/2012 12:39					663.0		AS PER CUSTOMER REQUES HESITATED
Pump Displacement	03/03/2012 12:42		0.3	10.3		891.0		AS PER CUSTOMER REQUEST PUMPED MORE DISPLACEMENT
Shutdown	03/03/2012 12:43							GOOD RETURNS THROUGH OUT THE JOB
Open Bypass / Sting Out	03/03/2012 12:44							STING OUT OF RETAINER
Reverse Circ Well	03/03/2012 12:45		4	20				RIG REVERSE CIRCULATED 1/2 BBL OF CEMENT OUT OF THE TUBING
Shutdown	03/03/2012 12:50							
End Job	03/03/2012 12:51							THANK YOU FOR CHOOSING HALLIBURTON, THOMAS PONDER AND CREW

# WPX PA 13-6

## RECEMENT SERVICE

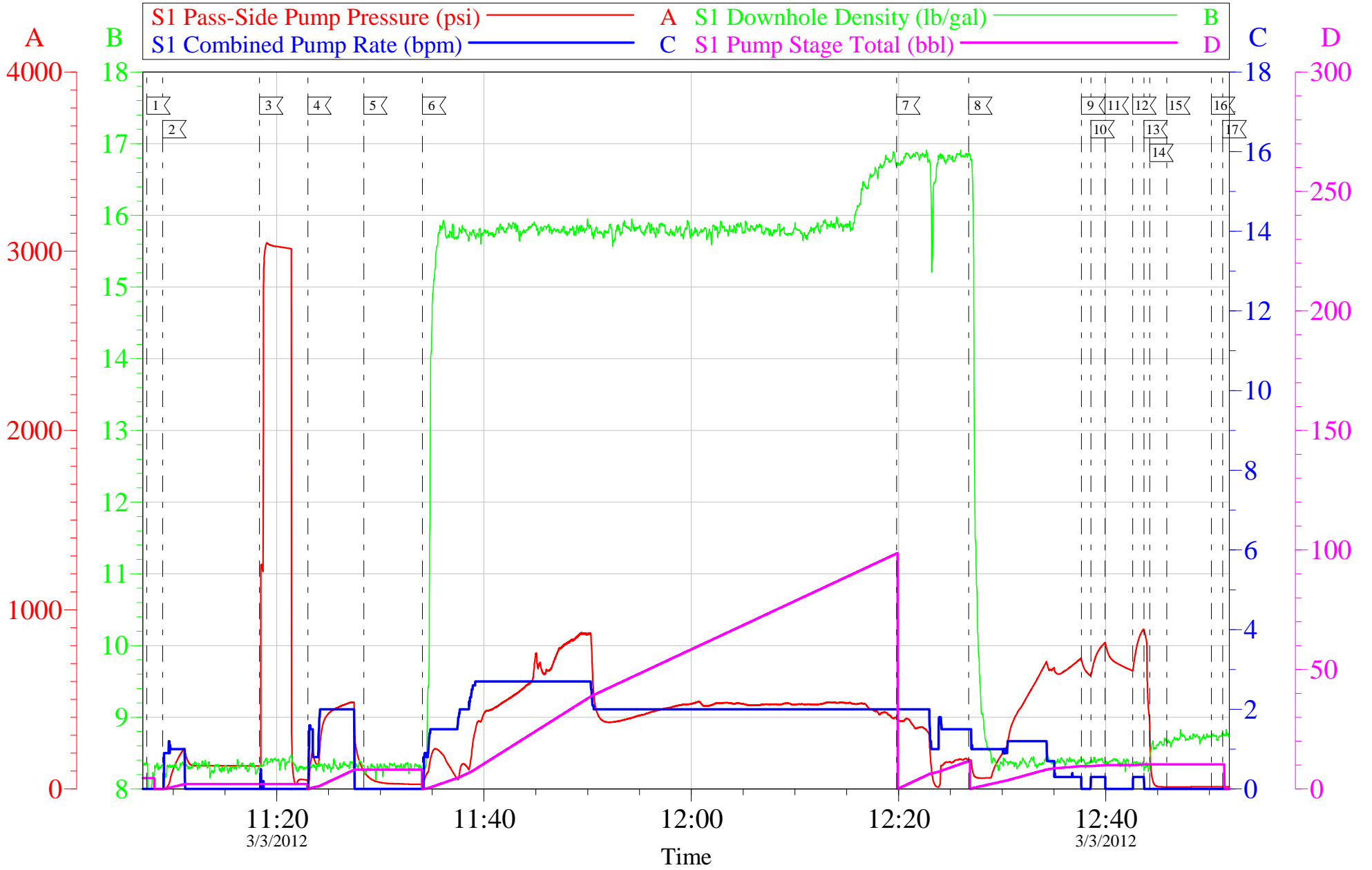


Local Event Log							
Maximum	SPPP		Maximum	SPPP	Maximum	SPPP	
1	START JOB	11:07:27	-1.000	2	FILL LINES	11:09:00	226.0
3	PUMP INJECTION TEST	11:23:00	483.0	4	MIX CEMENT	11:28:24	100.00
5	PUMP TAIL CEMENT	12:19:48	397.0	6	PUMP H2O DISPLACEMENT	12:26:46	729.0
7	PUMP H2O DISPLACEMENT	12:38:34	817.0	8	HESITATE	12:39:56	817.0
9	SHUTDOWN	12:43:41	891.0	10	STING OUT OF RETAINER	12:44:15	344.0
11	SHUTDOWN	12:50:12	12.00	11	END JOB	12:51:17	30.00
12				12			
13				13			
14				14			
15				15			
16				16			
17				17			

Customer: WPX	Job Date: 03-Mar-2012	Sales Order #: 9332510
Well Description: PA 13-6	Job Type: RECEMENT	ADC Used: YES
Company Rep: BRIAN DUNNIK	Cement Supervisor: THOMAS PONDER	Elite #/Operator: ELITE #6 / STEPHEN BORSZICH

# WPX PA 13-6

## RECEMENT SERVICE



Customer: WPX	Job Date: 03-Mar-2012	Sales Order #: 9332510
Well Description: PA 13-6	Job Type: RECEMENT	ADC Used: YES
Company Rep: BRIAN DUNNIK	Cement Supervisor: THOMAS PONDER	Elite #/Operator: ELITE #6 / STEPHEN BORSZICH

<b>Sales Order #:</b> 9332510	<b>Line Item:</b> 10	<b>Survey Conducted Date:</b> 3/3/2012
<b>Customer:</b> WPX ENERGY ROCKY MOUNTAIN LLC-EBUS		<b>Job Type (BOM):</b> CMT RECEMENT BOM
<b>Customer Representative:</b>		<b>API / UWI: (leave blank if unknown)</b> 05-045-11968
<b>Well Name:</b> PA		<b>Well Number:</b> 13-6
<b>Well Type:</b> Development Well	<b>Well Country:</b> United States of America	
<b>H2S Present:</b> No	<b>Well State:</b> Colorado	<b>Well County:</b> Garfield

Dear Customer,

We hope that you were satisfied with the service quality of this job performed by Halliburton. It is the aim of our management and service personnel to deliver equipment and service of a standard unmatched in the service sector of the energy industry.

Please take the time to let us know if our performance met with your satisfaction. Please be as critical as possible to ensure we constantly improve our service. Your comments are of great value to us and are intended for the exclusive use of Halliburton.

### CUSTOMER SATISFACTION SURVEY

CATEGORY	CUSTOMER SATISFACTION RESPONSE	
Survey Conducted Date	The date the survey was conducted	3/3/2012
Survey Interviewer	The survey interviewer is the person who initiated the survey.	THOMAS PONDER (HX41187)
Customer Participation	Did the customer participate in this survey? (Y/N)	No
Customer Representative	Enter the Customer representative name	
HSE	Was our HSE performance satisfactory? Circle Y or N	
Equipment	Were you satisfied with our Equipment? Circle Y or N	
Personnel	Were you satisfied with our people? Circle Y or N	
Customer Comment	Customer's Comment	

<b>CUSTOMER SIGNATURE</b>
---------------------------

<b>Sales Order #:</b> 9332510	<b>Line Item:</b> 10	<b>Survey Conducted Date:</b> 3/3/2012
<b>Customer:</b> WPX ENERGY ROCKY MOUNTAIN LLC-EBUS		<b>Job Type (BOM):</b> CMT RECEMENT BOM
<b>Customer Representative:</b>		<b>API / UWI: (leave blank if unknown)</b> 05-045-11968
<b>Well Name:</b> PA		<b>Well Number:</b> 13-6
<b>Well Type:</b> Development Well	<b>Well Country:</b> United States of America	
<b>H2S Present:</b> No	<b>Well State:</b> Colorado	<b>Well County:</b> Garfield

### KEY PERFORMANCE INDICATORS

General	
<b>Survey Conducted Date</b>	3/3/2012
The date the survey was conducted	

Cementing KPI Survey	
<b>Type of Job</b>	0
Select the type of job. (Cementing or Non-Cementing)	
<b>Select the Maximum Deviation range for this Job</b>	Vertical
What is the highest deviation for the job you just completed? This may not be the maximum well deviation.	
<b>Total Operating Time (hours)</b>	3
Total Operating Hours Including Rig-up, Pumping, Rig-down. Enter in decimal format.	
<b>HSE Incident, Accident, Injury</b>	No
HSE Incident, Accident, Injury. This should be recordable incidents only.	
<b>Was the job purpose achieved?</b>	Yes
Was the job delivered correctly as per customer agreed design?	
<b>Operating Hours (Pumping Hours)</b>	2
Total number of hours pumping fluid on this job. Enter in decimal format.	
<b>Customer Non-Productive Rig Time (hrs)</b>	0
Lost time due to Halliburton in the start, execution, or completion of an ordered service or product, or delays in a follow-on service. Enter in decimal format. 0 if none.	
<b>Type of Rig Classification Job Was Performed</b>	Drilling Rig (Portable)
Type Of Rig (classification) Job Was Performed On	
<b>Number Of JSAs Performed</b>	6
Number Of Jsas Performed	
<b>Number of Unplanned Shutdowns</b>	0
Unplanned shutdown is when injection stops for any period of time.	
<b>Was this a Primary Cement Job (Yes / No)</b>	No

<b>Sales Order #:</b> 9332510	<b>Line Item:</b> 10	<b>Survey Conducted Date:</b> 3/3/2012
<b>Customer:</b> WPX ENERGY ROCKY MOUNTAIN LLC-EBUS		<b>Job Type (BOM):</b> CMT RECEMENT BOM
<b>Customer Representative:</b>		<b>API / UWI: (leave blank if unknown)</b> 05-045-11968
<b>Well Name:</b> PA		<b>Well Number:</b> 13-6
<b>Well Type:</b> Development Well	<b>Well Country:</b> United States of America	
<b>H2S Present:</b> No	<b>Well State:</b> Colorado	<b>Well County:</b> Garfield

Primary Cement Job= Casing job, Liner job, or Tie-back job.	
<b>Was this a Plug or a Squeeze Job?</b> Please select the appropriate choice	No
<b>Was this a Primary or a Remedial Job?</b> Kick off plug, Plug to Abandon, LCM plug or Planned Liner Top Squeeze, Squeeze of existing perforations, Squeeze of casing leak	No
<b>Mixing Density of Job Stayed in Designed Density Range (0-100%)</b> Density Range defined as +/- .20 ppg. Calculation: Total BBLs cement mixed at designed density divided by total BBLs of cement multiplied by 100	99
<b>Was Automated Density Control Used?</b> Was Automated Density Control (ADC) Used ?	Yes
<b>Pump Rate (percent) of Job Stayed At Designed Pump Rate</b> Pump Rate range defined as +/- 1bbl/min. Calculation: Total BBLs of fluid pumped at the designed rate divided by Total BBLs of fluid pumped, multiplied by 100	99
<b>Nbr of Remedial Sqz Jobs Rqd - Competition</b> Number Of Remedial Squeeze Jobs Required After Primary Job Performed By Competition	0
<b>Nbr of Remedial Plug Jobs Rqd - HES</b> Number Of Remedial Plug Jobs Needed After Primary Plug Pumped By HES	0
<b>Nbr of Remedial Sqz Jobs Rqd - HES</b> Number Of Remedial Squeeze Jobs Required After Primary Job Performed By HES	0