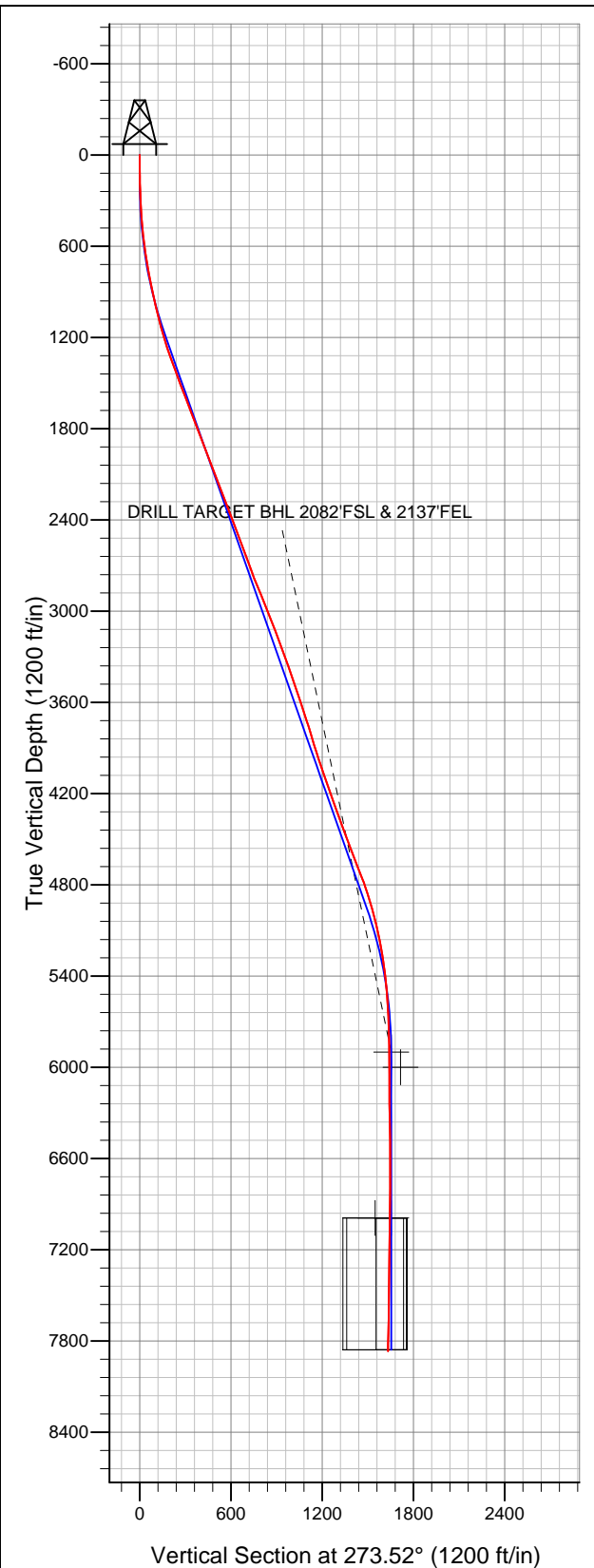


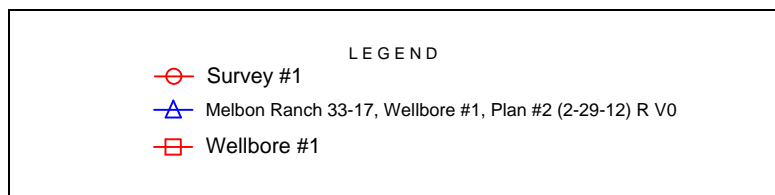
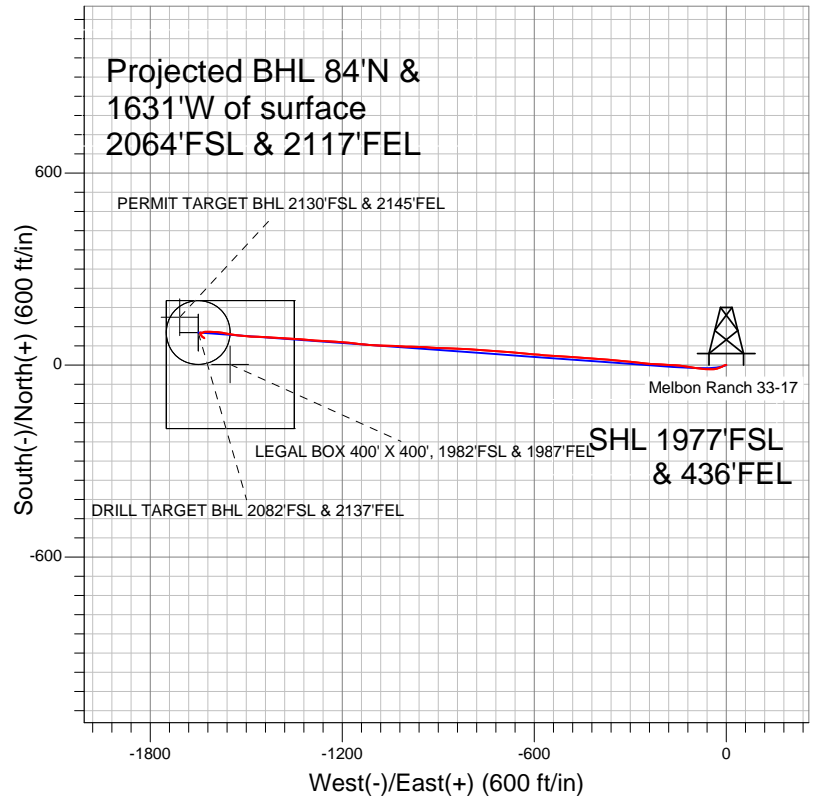
Well Name: Melbon Ranch 33-17

Surface Location: Melbon Ranch 8-4-17 Pad Sec.17-T2N-R65W
North American Datum 1983 US State Plane 1983Colorado Northern Zone
Ground Elevation: 4901.0

+N/-S	+E/-W	Northing	Easting	Latitude	Longitude	Slot
0.0	0.0	1293769.12	3229269.98	40.136880	-104.679970	
		Original Well Elev	WELL @ 4914.0ft (Original Well Elev)			



EnCana Oil & Gas Weld County CO



Final Survey Plot

Projected Final Survey -
8135'MD & 7866'TVD @ 1633°VS
1.10 deg Inc 138.20 deg AZ

Project: SEC.17-T2N-R65W
Site: Melbon Ranch 8-4-17 Pad Sec.17-T2N-R65W
Well: Melbon Ranch 33-17
Plan: Wellbore #1



EnCana Oil & Gas Weld County CO

SEC.17-T2N-R65W

Melbon Ranch 8-4-17 Pad Sec.17-T2N-R65W

Melbon Ranch 33-17

Wellbore #1

Survey: Survey #1

Standard Survey Report

12 March, 2012

Company:	EnCana Oil & Gas Weld County CO	Local Co-ordinate Reference:	Well Melbon Ranch 33-17
Project:	SEC.17-T2N-R65W	TVD Reference:	WELL @ 4914.0ft (Original Well Elev)
Site:	Melbon Ranch 8-4-17 Pad Sec.17-T2N-R65W	MD Reference:	WELL @ 4914.0ft (Original Well Elev)
Well:	Melbon Ranch 33-17	North Reference:	True
Wellbore:	Wellbore #1	Survey Calculation Method:	Minimum Curvature
Design:	Wellbore #1	Database:	Landmark

Project	SEC.17-T2N-R65W, Weld County, Colorado		
Map System:	US State Plane 1983	System Datum:	Mean Sea Level
Geo Datum:	North American Datum 1983		Using Well Reference Point
Map Zone:	Colorado Northern Zone		Using geodetic scale factor

Site	Melbon Ranch 8-4-17 Pad Sec.17-T2N-R65W				
Site Position:		Northing:	1,293,798.52 ft	Latitude:	40.136960
From:	Lat/Long	Easting:	3,229,297.66 ft	Longitude:	-104.679870
Position Uncertainty:	0.0 ft	Slot Radius:	"	Grid Convergence:	0.53 °

Well	Melbon Ranch 33-17					
Well Position	+N/-S	0.0 ft	Northing:	1,293,769.12 ft	Latitude:	40.136880
	+E/-W	0.0 ft	Easting:	3,229,269.98 ft	Longitude:	-104.679970
Position Uncertainty		0.0 ft	Wellhead Elevation:	ft	Ground Level:	4,901.0 ft

Wellbore	Wellbore #1				
Magnetics	Model Name	Sample Date	Declination (°)	Dip Angle (°)	Field Strength (nT)
	IGRF2010	2/29/2012	8.70	66.83	52,927

Design	Wellbore #1				
Audit Notes:					
Version:	1.0	Phase:	ACTUAL	Tie On Depth:	0.0
Vertical Section:	Depth From (TVD) (ft)	+N/-S (ft)	+E/-W (ft)	Direction (°)	
	0.0	0.0	0.0	273.52	

Survey Program	Date	3/12/2012			
From (ft)	To (ft)	Survey (Wellbore)	Tool Name	Description	
94.0	8,135.0	Survey #1 (Wellbore #1)	MWD	MWD - Standard	

Survey										
Measured Depth (ft)	Inclination (°)	Azimuth (°)	Vertical Depth (ft)	+N/-S (ft)	+E/-W (ft)	Vertical Section (ft)	Dogleg Rate (°/100ft)	Build Rate (°/100ft)	Turn Rate (°/100ft)	
0.0	0.00	0.00	0.0	0.0	0.0	0.0	0.00	0.00	0.00	
94.0	0.20	298.10	94.0	0.1	-0.1	0.1	0.21	0.21	0.00	
185.0	1.20	267.20	185.0	0.1	-1.2	1.2	1.14	1.10	-33.96	
277.0	2.50	249.80	276.9	-0.6	-4.1	4.0	1.52	1.41	-18.91	
369.0	3.90	241.50	368.8	-2.8	-8.7	8.5	1.60	1.52	-9.02	
460.0	5.80	244.90	459.5	-6.2	-15.6	15.2	2.11	2.09	3.74	
551.0	7.30	250.30	549.9	-10.1	-25.2	24.5	1.78	1.65	5.93	
643.0	8.30	263.90	641.0	-12.8	-37.3	36.5	2.27	1.09	14.78	
737.0	10.10	271.40	733.8	-13.3	-52.3	51.4	2.30	1.91	7.98	
830.0	11.30	274.50	825.2	-12.4	-69.5	68.6	1.43	1.29	3.33	
891.0	11.80	277.50	885.0	-11.1	-81.7	80.8	1.28	0.82	4.92	
985.0	12.60	277.20	976.8	-8.6	-101.4	100.7	0.85	0.85	-0.32	
1,078.0	14.50	280.70	1,067.3	-5.2	-122.9	122.3	2.22	2.04	3.76	

Company:	EnCana Oil & Gas Weld County CO	Local Co-ordinate Reference:	Well Melbon Ranch 33-17
Project:	SEC.17-T2N-R65W	TVD Reference:	WELL @ 4914.0ft (Original Well Elev)
Site:	Melbon Ranch 8-4-17 Pad Sec.17-T2N-R65W	MD Reference:	WELL @ 4914.0ft (Original Well Elev)
Well:	Melbon Ranch 33-17	North Reference:	True
Wellbore:	Wellbore #1	Survey Calculation Method:	Minimum Curvature
Design:	Wellbore #1	Database:	Landmark

Survey										
Measured Depth (ft)	Inclination (°)	Azimuth (°)	Vertical Depth (ft)	+N/-S (ft)	+E/-W (ft)	Vertical Section (ft)	Dogleg Rate (°/100ft)	Build Rate (°/100ft)	Turn Rate (°/100ft)	
1,172.0	15.80	275.60	1,158.0	-1.7	-147.2	146.8	1.98	1.38	-5.43	
1,266.0	17.50	272.40	1,248.0	0.1	-174.0	173.7	2.05	1.81	-3.40	
1,359.0	19.70	272.80	1,336.2	1.5	-203.7	203.4	2.37	2.37	0.43	
1,453.0	20.40	274.30	1,424.5	3.5	-235.8	235.6	0.92	0.74	1.60	
1,547.0	21.10	276.50	1,512.4	6.6	-269.0	268.9	1.11	0.74	2.34	
1,640.0	21.00	275.60	1,599.2	10.1	-302.2	302.3	0.36	-0.11	-0.97	
1,734.0	21.10	275.80	1,686.9	13.5	-335.8	336.0	0.13	0.11	0.21	
1,828.0	20.90	275.20	1,774.7	16.7	-369.3	369.7	0.31	-0.21	-0.64	
1,921.0	20.60	273.90	1,861.6	19.3	-402.2	402.6	0.59	-0.32	-1.40	
2,015.0	21.40	273.30	1,949.4	21.4	-435.8	436.3	0.88	0.85	-0.64	
2,109.0	21.10	274.10	2,037.0	23.6	-469.8	470.4	0.44	-0.32	0.85	
2,202.0	21.00	274.10	2,123.8	26.0	-503.1	503.8	0.11	-0.11	0.00	
2,296.0	20.70	274.10	2,211.6	28.4	-536.5	537.2	0.32	-0.32	0.00	
2,389.0	20.50	274.20	2,298.7	30.8	-569.1	569.9	0.22	-0.22	0.11	
2,483.0	21.50	275.50	2,386.4	33.6	-602.7	603.6	1.17	1.06	1.38	
2,577.0	21.10	275.20	2,474.0	36.8	-636.7	637.7	0.44	-0.43	-0.32	
2,670.0	20.10	273.50	2,561.1	39.3	-669.3	670.5	1.25	-1.08	-1.83	
2,764.0	20.00	274.90	2,649.4	41.7	-701.4	702.7	0.52	-0.11	1.49	
2,858.0	20.40	274.30	2,737.6	44.3	-733.8	735.1	0.48	0.43	-0.64	
2,951.0	21.60	274.10	2,824.4	46.7	-767.0	768.5	1.29	1.29	-0.22	
3,045.0	22.30	274.00	2,911.6	49.2	-802.1	803.6	0.75	0.74	-0.11	
3,139.0	21.60	271.10	2,998.8	50.8	-837.2	838.7	1.37	-0.74	-3.09	
3,232.0	22.00	272.90	3,085.1	52.0	-871.7	873.2	0.84	0.43	1.94	
3,326.0	21.20	272.40	3,172.5	53.6	-906.2	907.8	0.87	-0.85	-0.53	
3,420.0	19.60	274.10	3,260.6	55.4	-939.0	940.6	1.81	-1.70	1.81	
3,513.0	19.60	272.00	3,348.3	57.1	-970.1	971.8	0.76	0.00	-2.26	
3,607.0	18.70	270.40	3,437.1	57.7	-1,000.9	1,002.6	1.11	-0.96	-1.70	
3,701.0	18.70	274.10	3,526.1	58.9	-1,031.0	1,032.7	1.26	0.00	3.94	
3,794.0	18.10	273.10	3,614.3	60.8	-1,060.3	1,062.1	0.73	-0.65	-1.08	
3,888.0	19.10	268.90	3,703.4	61.3	-1,090.3	1,092.0	1.78	1.06	-4.47	
3,982.0	16.30	277.20	3,793.0	62.6	-1,118.8	1,120.5	4.00	-2.98	8.83	
4,075.0	17.20	275.50	3,882.0	65.6	-1,145.4	1,147.3	1.10	0.97	-1.83	
4,169.0	18.40	277.60	3,971.5	68.9	-1,173.9	1,176.0	1.45	1.28	2.23	
4,263.0	18.70	273.90	4,060.7	71.9	-1,203.7	1,205.8	1.29	0.32	-3.94	
4,356.0	19.80	272.60	4,148.5	73.6	-1,234.3	1,236.5	1.27	1.18	-1.40	
4,450.0	19.00	273.30	4,237.1	75.2	-1,265.5	1,267.7	0.89	-0.85	0.74	
4,544.0	19.40	276.10	4,325.9	77.7	-1,296.3	1,298.6	1.07	0.43	2.98	
4,637.0	21.00	273.00	4,413.2	80.2	-1,328.3	1,330.7	2.07	1.72	-3.33	
4,731.0	20.10	274.10	4,501.2	82.3	-1,361.2	1,363.7	1.04	-0.96	1.17	
4,825.0	21.70	273.20	4,589.0	84.4	-1,394.7	1,397.2	1.74	1.70	-0.96	
4,918.0	21.00	273.40	4,675.6	86.3	-1,428.5	1,431.1	0.76	-0.75	0.22	
5,012.0	20.80	271.80	4,763.4	87.9	-1,462.0	1,464.6	0.64	-0.21	-1.70	
5,106.0	17.90	274.20	4,852.1	89.5	-1,493.1	1,495.7	3.20	-3.09	2.55	
5,199.0	16.10	276.30	4,941.1	91.9	-1,520.1	1,522.9	2.04	-1.94	2.26	
5,293.0	14.10	279.30	5,031.8	95.2	-1,544.4	1,547.3	2.28	-2.13	3.19	
5,387.0	12.10	281.90	5,123.4	99.1	-1,565.3	1,568.5	2.22	-2.13	2.77	
5,480.0	10.20	275.10	5,214.6	101.8	-1,583.1	1,586.3	2.48	-2.04	-7.31	
5,574.0	8.30	274.50	5,307.4	103.1	-1,598.1	1,601.4	2.02	-2.02	-0.64	
5,668.0	6.10	270.80	5,400.6	103.7	-1,609.9	1,613.2	2.39	-2.34	-3.94	
5,761.0	5.30	269.80	5,493.2	103.7	-1,619.1	1,622.4	0.87	-0.86	-1.08	
5,855.0	4.00	269.00	5,586.9	103.7	-1,626.7	1,630.0	1.38	-1.38	-0.85	
5,949.0	2.80	254.80	5,680.7	103.0	-1,632.2	1,635.5	1.55	-1.28	-15.11	
6,042.0	1.20	238.10	5,773.6	101.9	-1,635.3	1,638.4	1.81	-1.72	-17.96	
6,136.0	1.40	213.10	5,867.6	100.4	-1,636.7	1,639.8	0.63	0.21	-26.60	

Company: EnCana Oil & Gas Weld County CO
Project: SEC.17-T2N-R65W
Site: Melbon Ranch 8-4-17 Pad Sec.17-T2N-R65W
Well: Melbon Ranch 33-17
Wellbore: Wellbore #1
Design: Wellbore #1

Local Co-ordinate Reference: Well Melbon Ranch 33-17
TVD Reference: WELL @ 4914.0ft (Original Well Elev)
MD Reference: WELL @ 4914.0ft (Original Well Elev)
North Reference: True
Survey Calculation Method: Minimum Curvature
Database: Landmark

Survey

Measured Depth (ft)	Inclination (°)	Azimuth (°)	Vertical Depth (ft)	+N/-S (ft)	+E/-W (ft)	Vertical Section (ft)	Dogleg Rate (°/100ft)	Build Rate (°/100ft)	Turn Rate (°/100ft)
6,168.5	0.93	214.97	5,900.1	99.9	-1,637.1	1,640.1	1.44	-1.44	5.74
DRILL TARGET BHL 2082'FSL & 2137'FEL									
6,230.0	0.10	274.60	5,961.6	99.5	-1,637.4	1,640.4	1.44	-1.35	96.94
6,268.4	0.09	207.66	6,000.0	99.4	-1,637.5	1,640.5	0.27	-0.04	-174.54
PERMIT TARGET BHL 2130'FSL & 2145'FEL									
6,323.0	0.20	166.70	6,054.6	99.3	-1,637.5	1,640.5	0.27	0.21	-74.95
6,417.0	0.60	308.10	6,148.6	99.5	-1,637.8	1,640.8	0.82	0.43	150.43
6,511.0	1.00	303.50	6,242.6	100.2	-1,638.9	1,642.0	0.43	0.43	-4.89
6,605.0	1.10	290.00	6,336.6	101.0	-1,640.4	1,643.5	0.28	0.11	-14.36
6,700.0	0.90	279.70	6,431.6	101.4	-1,642.0	1,645.1	0.28	-0.21	-10.84
6,794.0	0.50	259.60	6,525.6	101.5	-1,643.1	1,646.3	0.49	-0.43	-21.38
6,888.0	0.60	208.50	6,619.5	101.0	-1,643.8	1,646.9	0.51	0.11	-54.36
6,983.0	1.00	176.00	6,714.5	99.7	-1,644.0	1,647.0	0.62	0.42	-34.21
7,077.0	1.30	163.10	6,808.5	97.9	-1,643.6	1,646.5	0.42	0.32	-13.72
7,171.0	1.50	155.80	6,902.5	95.7	-1,642.8	1,645.6	0.28	0.21	-7.77
7,259.3	1.50	152.14	6,990.7	93.6	-1,641.8	1,644.4	0.11	0.00	-4.15
TARGET CIRCLE 2082'FSL & 2137'FEL									
7,262.8	1.50	151.99	6,994.2	93.6	-1,641.7	1,644.4	0.11	0.00	-4.15
LEGAL BOX 400' X 400', 1982'FSL & 1987'FEL									
7,265.0	1.50	151.90	6,996.5	93.5	-1,641.7	1,644.3	0.11	0.00	-4.15
7,360.0	1.10	143.40	7,091.4	91.7	-1,640.6	1,643.1	0.47	-0.42	-8.95
7,454.0	1.00	142.90	7,185.4	90.3	-1,639.5	1,642.0	0.11	-0.11	-0.53
7,548.0	0.80	145.50	7,279.4	89.1	-1,638.7	1,641.1	0.22	-0.21	2.77
7,643.0	0.70	133.30	7,374.4	88.2	-1,637.9	1,640.2	0.20	-0.11	-12.84
7,737.0	0.80	115.60	7,468.4	87.5	-1,636.9	1,639.2	0.27	0.11	-18.83
7,831.0	0.90	116.00	7,562.4	86.9	-1,635.6	1,637.9	0.11	0.11	0.43
7,926.0	1.10	112.00	7,657.4	86.2	-1,634.1	1,636.3	0.22	0.21	-4.21
8,020.0	1.20	126.30	7,751.3	85.3	-1,632.5	1,634.6	0.32	0.11	15.21
8,090.0	1.10	138.20	7,821.3	84.4	-1,631.4	1,633.5	0.37	-0.14	17.00
8,135.0	1.10	138.20	7,866.3	83.7	-1,630.9	1,632.9	0.00	0.00	0.00

Checked By: _____ Approved By: _____ Date: _____